

Non-Profit Org.
US Postage
PAID
Slate Group



This new concert special features performances across classical, pop, Motown, and country genres. Bringing together renowned solo vocalists, a 25-piece ensemble of The American Pops Orchestra, and a choir from community groups and churches in the Washington, D.C. area, the concert represents the vast fellowship that is united through sacred pieces.

Featured artists include the Godmother of Soul, R&B singer and actress Patti LaBelle; Emmy and Tony Award-winning actress and singer Kristin Chenoweth; Grammy Award-winning singer Sandi Patty; Grammy Award-winning baritone Will Liverman; celebrated artists Tyler Hughes, Haselden Ciaccio, and Stephanie Duckworth (Appalachian Bluegrass Trio); and Founder and Music Director of The American Pops Orchestra, Luke Frazier.

Tue 28th 7pm (3-2)

Program Guide KENW-TV/FM
Eastern New Mexico University
November 2023

Q2:3



**BARBRA STREISAND:
BACK TO BROOKLYN**

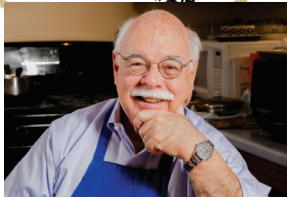
2023
WinterFEST
Nov. 25th-Dec. 3rd



2023

Winter FEST

Nov. 25th-Dec. 3rd



America's Home Cooking: Easy Recipes for Thrifty Cooking

Host Chris Fennimore welcomes guest cooks who present recipes that are easy on the cook and the pocket-book. The cooking segments are: "Legumes - Beans and Greens," "Crock-pot Magic - Onion/Cranberry Brisket," "Hearty Soups - Roasted Butternut Squash Soup," "One Pound of Ground - Shepard's Pie," "Leftovers Live Again - Chicken a la King," and "Classic Casseroles - Baked Macaroni."

Sun 26th 12pm (3-2)

Tue 28th 8pm (3-1)



The Rolling Stones: Rock and Roll Circus

In 1968, the Stones headlined "Rock and Roll Circus," a planned TV special. The Stones performed a six-song set, including performances by The Who, Jethro Tull, Taj Mahal, Marianne Faithfull, Yoko Ono, and The Dirty Mac, a supergroup featuring John Lennon, Eric Clapton, Keith Richards, and Mitch Mitchell of The Jimi Hendrix Experience.

Wed 29th 7pm (3-2)



CYNDI LAUPER Live... At Last

Twenty years after her debut album *She's So Unusual* made her an icon, singer Cyndi Lauper performed an intimate concert at New York's Town Hall. Filmed in 2004, this special features dramatic renditions of her greatest hits including "Girls Just Want To Have Fun," "Money Changes Everything," "Time After Time," and "True Colors."

Wed 29th 8:30pm (3-2)



NEIL DIAMOND: Thank You Australia

Neil Diamond is an American legend. He is one of the finest and most successful songwriters of the last 40 years, a multi-platinum-selling recording artist. This concert from the Sydney Sports Stadium was an event that marked his comeback to the live stage. The vast crowd was typical of this record-breaking tour, which is still one of the most memorable in Australian history, and Neil Diamond delivered the enthralling performance of a true showman.

Sat 25th 8:30pm (3-2)

BARBRA STREISAND: Back to Brooklyn

Barbra Streisand's 2012 *Back To Brooklyn* tour highlighted a return to performing in her home borough for the first time since she was in grade school. Following the first of her Brooklyn shows, which helped inaugurate the brand new Barclays Center, *The New York Times* praised Streisand's "spellbinding voice" and noted: "Like few singers of any age, she has the gift of conveying a primal human longing in a beautiful sound."

Sun 26th 6pm (3-2)

ENGLAND MADE WITH LOVE

England is home to some of the world's most talented and dedicated artisans. **England Made with Love** offers a deep dive into British culture as they teach the next generation of apprentices hands-on skills and the expertise they bring to their unique trades. Whether thatching roofs, practicing watchmaking, making teapots, weaving scarves, or binding books, the passion and skill of each artisan is revealed.

Sun 26th 10:30am (3-2)

Wed 29th 7pm (3-1)



Primetime

Wednesday 1st

6:00	3-2	PBS NewsHour
	3-1	<i>PBS NewsHour</i>
7:00	3-2	Nature "Spy in the Ocean," Pt. 2
	3-1	<i>Grandpa's War Story Goes Viral</i>
8:00	3-2	Nova "Ancient Earth: Humans"
	3-1	<i>Secrets of the Dead</i>
9:00	3-2	Secrets of the Dead
		"Death in Britannia"
	3-1	<i>Nature</i> "Spy in the Ocean," Pt. 2
	3-3	<i>Finding Your Roots</i>
10:00	3-2	Healthy Minds
	3-1	<i>Amanpour and Company</i>
	3-3	<i>Pati's Mexican Table</i>
10:30	3-2	This Old House
	3-3	<i>J Schwanke's Life In Bloom</i>
11:00	3-2	Amanpour and Company
	3-1	<i>PBS NewsHour</i>
	3-3	<i>Travels with Darley</i>
11:30	3-3	<i>Rick Steves' Europe</i>
12:00	3-2	PBS NewsHour
	3-1	<i>Nova</i> "Ancient Earth: Humans"
	3-3	<i>Reconnecting Roots</i>

Thursday 2nd

6:00	3-2	PBS NewsHour
	3-1	<i>PBS NewsHour</i>
7:00	3-2	Frontline "McConnell, the GOP & the Court"
	3-1	<i>Song of the Mountains</i>
8:00	3-2	Song of the Mountains
	3-1	<i>Red and Green Show</i>
8:30	3-1	<i>You Should Know</i>
9:00	3-2	SportsLook with Doc Elder
	3-1	<i>Creative Living</i>
	3-3	<i>Secrets of the Dead</i>
9:30	3-2	Red Green Show "The Mount Rushmore Project"
	3-1	<i>SportsLook with Doc Elder</i>
10:00	3-2	Woodsongs
	3-1	<i>Amanpour and Company</i>
	3-3	<i>Nature</i> "Spy in the Ocean," Pt. 2
11:00	3-2	Amanpour and Company
	3-1	<i>PBS NewsHour</i>
	3-3	<i>Nova</i>
12:00	3-2	PBS NewsHour
	3-1	<i>Chavis Chronicles</i>
	3-3	<i>Closer to the Truth</i>

Friday 3rd

6:00	3-2	PBS NewsHour
	3-1	<i>PBS NewsHour</i>
7:00	3-2	Market to Market
	3-1	<i>Washington Week</i>
7:30	3-2	Consuelo Mack Wealthtrack
	3-1	<i>Firing Line</i>
8:00	3-2	Washington Week
	3-1	<i>Nova</i> "Ancient Earth: Humans"
8:30	3-2	Firing Line
9:00	3-2	Great Performances
		"Message in a Bottle"
	3-1	<i>Frontline</i> "McConnell, the GOP and the Court"
	3-3	<i>This Old House</i>
9:30	3-3	<i>Ask This Old House</i>
10:00	3-3	<i>American Woodshop</i>
	3-1	<i>Amanpour and Company</i>
10:30	3-2	Hotel Portofino , Pt. 3
	3-3	<i>Woodsmith Shop</i>
11:00	3-1	<i>PBS NewsHour</i>
	3-3	<i>Joy of Painting</i>
11:30	3-2	Rick Steves' Europe
	3-3	<i>Painting and Travel</i>
12:00	3-2	PBS Newshour
	3-1	<i>Astrid</i>
	3-3	<i>Start Up</i>

Saturday 4th

6:00	3-2	Report from Santa Fe
	3-1	<i>Antiques Roadshow</i>
6:30	3-2	America's Heartland
7:00	3-2	Lawrence Welk "Island Show"
	3-1	<i>Great Performances</i>
		"Message in a Bottle"
8:00	3-2	Curious Traveler "Tallin"
8:30	3-2	Red Green Show "Badger Project"
	3-1	<i>Cara Romero: Following the Light</i>
9:00	3-2	Austin City Limits "Jorge Drexler"
	3-1	<i>Caverns Sessions</i>
	3-3	<i>Lawrence Welk Show</i>
9:30	3-1	<i>Taco Mafia</i>
10:00	3-2	Nova "Ancient Earth: Humans"
	3-1	<i>Austin City Limits</i> "Jorge Drexler"
	3-3	<i>Classic Gospel</i>
11:00	3-2	Nature "Spy in the Ocean," Pt. 2
	3-1	<i>Nova</i> "Ancient Earth: Humans"
	3-3	<i>Woodsongs</i>
12:00	3-2	Austin City Limits "Jorge Drexler"
	3-1	<i>Nature</i> "Spy in the Ocean," Pt. 2
	3-3	<i>Song of the Mountains</i>

Sunday 5th

5:30	3-2	Great Performances
		"Message in a Bottle"
	3-1	<i>Closer to the truth</i>
6:00	3-1	<i>Hotel Portofino</i>
7:00	3-2	Hotel Portofino "Contortions," Pt. 4
	3-1	<i>Masterpiece</i> "World on Fire"
8:00	3-2	Masterpiece "World on Fire," Pt. 4
	3-1	<i>Masterpiece</i> "Annika"
9:00	3-2	Masterpiece "Annika," Pt. 4
	3-1	<i>Native Art Now</i>
	3-3	<i>Daytripper</i>
9:30	3-3	<i>America's Heartland</i>

10:00	3-2	Secrets of the Dead
		"Death in Britannia"
	3-1	<i>POV</i> "Fire Through Dry Grass"
	3-3	<i>This Old House</i>
10:30	3-3	<i>Ask This Old House</i>
11:00	3-2	Finding Your Roots "Anchormen"
	3-3	<i>Motorweek</i>
11:30	3-1	<i>Rediscovering John Berryman</i>
	3-3	<i>Texas Parks and Wildlife</i>
12:00	3-2	Nova "Ancient Earth: Human"
	3-1	<i>Masterpiece</i> "World on Fire"
	3-3	<i>Nature</i> "Spy in the Ocean"

Monday 6th

6:00	3-2	PBS NewsHour
	3-1	<i>PBS NewsHour</i>
7:00	3-2	Antiques Roadshow
		"Vintage Chattanooga"
	3-1	<i>Into the Night: Darkness and Light</i>
8:00	3-2	Antiques Roadshow
		"Vintage Honolulu"
9:00	3-2	Independent Lens
		"Three Chaplains"
	3-1	<i>Antiques Roadshow</i>
	3-3	<i>Hotel Portofino</i>
10:00	3-2	Today's Wild West
	3-1	<i>Amanpour and Company</i>
	3-3	<i>Masterpiece</i> "World on Fire"
10:30	3-2	Texas Parks and Wildlife
11:00	3-2	Antiques Roadshow0
		"Vintage Chattanooga"
	3-1	<i>PBS NewsHour</i>
	3-3	<i>Masterpiece</i> "Annika"
12:00	3-2	PBS NewsHour
	3-1	<i>Independent Lens</i>
	3-3	<i>Tell Me More with Kelly Corrigan</i>



Brain-Gut Connection with Dr. Emeran Mayer

Join award-winning gastroenterologist and neuroscientist Dr. Emeran Mayer to explore the interconnectivity between the gut and the brain, revealing illuminating strategies for mental and physical well-being. Dr. Mayer explores the hidden conversation within our bodies that impacts our physical *and* mental health: depression, anxiety, stress level, and risk for serious neurodegenerative diseases like Parkinson's, Alzheimer's, and cognitive decline.

Mon 27th 8:30pm (3-2)

Sun 26th 10:30am (3-1)



5 Minute Yoga Fix with Peggy Cappy

After years of teaching and practicing, Peggy Cappy has designed a way of incorporating yoga into our daily routine. Each short period of stretching, strength-building, and specialized breathing contributes to greater flexibility, strength, and mental clarity. Her 10th special is for anyone to take time out for a class or for themselves.

Sun 26th 5pm (3-2)

Tue 28th 7pm (3-1)



INDEPENDENT LENS

Three Chaplains

As Muslim chaplains, upholding the First Amendment is not just part of their job description, it is highly personal. Three chaplains swear an oath to the Constitution, vowing to protect the right of every service member to practice their faith freely. Despite decades of military service, some still view them as the enemy and unfit to serve because of their beliefs. Rather than blend in, they accept the challenges and inherent dangers of being the public face of Islam for the U.S. military.



Mon 6th 9pm (3-2)

Tue 7th 8pm (3-1)

Sun 12th 10pm (3-1)

Tuesday 7th

- 6:00 3-2 **PBS NewsHour**
3-1 *PBS NewsHour*
- 7:00 3-2 **Finding Your Roots**
3-1 *Native America*
- 8:00 3-2 **Native America** "Women Rule," Pt. 3
3-1 *Independent Lens*
- 9:00 3-2 **Cultura Special** "Balloon Festival"
3-1 *Finding Your Roots*
3-3 *Antiques Roadshow*
- 10:00 3-2 **Frontline** "Inside Uvalde Response"
3-1 *Amanpour and Company*
3-3 *History Detectives*
- 11:00 3-2 **Amanpour and Company**
3-1 *PBS NewsHour*
3-3 *Nature* "Spy in the Ocean," Pt. 2
- 12:00 3-2 **PBS NewsHour**
3-1 *Frontline* "Inside Uvalde Response"
3-3 *America's Heartland*

Wednesday 8th

- 6:00 3-2 **PBS NewsHour**
3-1 *PBS NewsHour*
- 7:00 3-2 **Nature** "Spy in the Ocean," Pt. 3
3-1 *Just Like Me: The Vietnam War/The American War*
- 8:00 3-2 **Nova** "Inside China's Tech Boom"
3-1 *Secrets of the Dead*
- 9:00 3-2 **Secrets of the Dead**
"Decoding Hieroglyphics"
3-1 *Nature* "Spy in the Ocean," Pt. 3
3-3 *Finding Your Roots*
- 10:00 3-2 **Healthy Minds** "Psychedelic-Assisted Psychotherapy and Post Trauma"
3-1 *Amanpour and Company*
3-3 *Pati's Mexican Table*
- 10:30 3-2 **This Old House**
3-3 *J. Schwanke's Life in Bloom*
- 11:00 3-2 **Amanpour and Company**
3-1 *PBS NewsHour*
3-3 *Travels with Darley*

- 11:30 3-3 *Rick Steves' Europe*
- 12:00 3-2 **PBS NewsHour**
3-1 *Nova* "Inside China's Tech Boom"
3-3 *Reconnecting Roots*

Thursday 9th

- 6:00 3-2 **PBS NewsHour**
3-1 *PBS NewsHour*
- 7:00 3-2 **Frontline** "Inside Uvalde Response"
3-1 *Song of the Mountains*
- 8:00 3-2 **Song of the Mountains**
3-1 *Red Green Show* "Catfish Project"
- 8:30 3-1 *You Should Know*
- 9:00 3-2 **SportsLook with Doc Elder**
3-1 *Creative Living*
3-3 *Secrets of the Dead*
- 9:30 3-2 **Red Green Show** "Catfish Project"
3-1 *SportsLook with Doc Elder*
- 10:00 3-2 **WoodSongs**
3-1 *Amanpour and Company*
3-3 *Nature* "Spy in the Ocean," Pt. 3
- 11:00 3-2 **Amanpour and Company**
3-1 *PBS NewsHour*
3-3 *Nova*
- 12:00 3-2 **PBS NewsHour**
3-1 *Chavis Chronicles*
3-3 *Closer to Truth*

Friday 10th

- 6:00 3-2 **PBS NewsHour**
3-1 *PBS NewsHour*
- 7:00 3-2 **Market to Market**
3-1 *Washington Week*
- 7:30 3-2 **Consuelo Mack Wealthtrack**
3-1 *Firing Line*
- 8:00 3-2 **Washington Week**
3-1 *Nova* "Inside China's Tech Boom"
- 8:30 3-2 **Firing Line**
- 9:00 3-2 **Salute to Service: A Veterans Day Celebration**
3-1 *Frontline* "Inside Uvalde Response"
3-3 *This Old House*
- 9:30 3-3 *Ask This Old House*
- 10:00 3-2 **Hotel Portofino** "Contortions," Pt. 4
3-1 *Amanpour and Company*
3-3 *American Woodshop*
- 10:30 3-3 *Woodsmith Shop*
- 11:00 3-2 **Canvassing the World** "Bali"
3-1 *PBS NewsHour*
3-3 *Joy of Painting*
- 11:30 3-2 **Rick Steves' Europe**
3-3 *Painting and Travel*
- 12:00 3-2 **PBS NewsHour**
3-1 *Astrid*
3-3 *Start Up*

Saturday 11th

- 6:00 3-2 **Report from Santa Fe**
3-1 *Antiques Roadshow*
- 6:30 3-2 **America's Heartland**
- 7:00 3-2 **Lawrence Welk Show**
"Time Was" (Joann Castle)
3-1 *Salute to Service: A Veterans Day Celebration*
- 8:00 3-2 **Curious Traveler** "Switzerland"
3-1 *Terence Blanchard in Dallas*
- 8:30 3-2 **Red Green Show**
"Conveyor Project"
- 9:00 3-2 **Austin City Limits** "Jason Isbell"
3-1 *Caverns Sessions*
3-3 *Lawrence Welk Show*
- 9:30 3-1 *Taco Mafia*
- 10:00 3-2 **Nova** "Inside China's Tech Boom"
3-1 *Austin City Limits* "Jason Isbell"
3-3 *Classic Gospel*
- 11:00 3-2 **Nature** "Spy in the Ocean," Pt. 3
3-1 *Nova* "Inside China's Tech Boom"
3-3 *WoodSongs*
- 12:00 3-2 **Austin City Limits**
3-1 *Nature* "Spy in the Ocean," Pt. 3
3-3 *Song of the Mountains*



Inside the Warren Commission

This is the story about the Warren Commission, the people who worked tirelessly to find the truth behind the assassination of President John F. Kennedy. Their story involves personalities, politics, and challenges, both from within and without. The Warren Report is perhaps the most controversial document in modern history and remains unread by most Americans.

Sun 12th 2pm (3-2)

Thu 16th 7pm (3-2)

Mon 13th 7pm (3-1)

JFK:

Breaking the News

Sixty years ago this month, on November 22, 1963, the motorcade transporting President John F. Kennedy was met by thousands of citizens and hundreds of members of the press as it slowly made its way through downtown Dallas. Moments later, the president's assassination would forever change the country, the world and the landscape of broadcast journalism.

JFK: Breaking the News offers a close-up look at how reporters responded to the national tragedy. Through the lens of journalists working in Dallas in 1963, viewers learn about the moment-by-moment experiences of those who covered one of the most significant events in U.S. history.

Sun 19th 2pm (3-2)

Mon 20th 8pm (3-2)

Wed 22nd 7pm (3-1)

KENW-TV SCHEDULES 3-1 (HD), 3-2 (HD) AND 3-3 (SD)

KENW-TV considers Channel 3-2 to be its "main" channel and is listed below in bold. Channel 3-2 is carried by most TV cable systems in eastern New Mexico. Schedule 3-1 can be seen on the HD services of some cable companies. 3-3 is our Children's/Encore Channel (SD) and 3-4 is our FNX Channel (First Nations Experience).

KENW-TV's 3-1 schedule (below in bold italics) is carried by DirecTV and Dish Network in most counties of New Mexico. KENW-TV's 3-3 schedule (below in bold italics) can only be seen over the air with an antenna.

The schedule for KENW-TV's 3-4 FNX Channel is available at <https://fnx.org/schedule/>.

Those using antennas can receive all four channels in the following cities: Clovis/Portales; Hobbs/Lovington; Roswell; Artesia; Ft. Sumner; Tucumcari; Carlsbad; Ruidoso; Mescalero.

KENW-TV digital transmitters are located in: Artesia; Carlsbad; Ft. Sumner; Hobbs; Portales/Clovis; Roswell; Tucumcari; Ruidoso; Mescalero

Sunday 12th

- 6:00 3-2 Salute to Service: A Veterans Day Celebration**
3-1 *Hotel Portofino, Pt. 5*
- 7:00 3-2 Hotel Portofino** "Subterfuges," Pt. 5
3-1 *Masterpiece "World on Fire"*
- 8:00 3-2 Masterpiece** "World on Fire," Pt. 5
3-1 *Masterpiece "Annika"*
- 9:00 3-2 Masterpiece** "Annika, Pt. 5
3-1 *Salute to Service: A Veterans Day Celebration*
3-3 *Daytripper*
- 9:30 3-3 America's Heartland**
- 10:00 3-2 Secrets of the Dead**
"Decoding Hieroglyphics"
3-1 *Independent Lens "Three Chaplains"*
3-3 *This Old House*
- 10:30 3-3 Ask This Old House**
- 11:00 3-2 Finding Your Roots**
3-3 *Motorweek*
3-1 *Made in America*
- 11:30 3-3 Texas Parks and Wildlife**
- 12:00 3-2 Nova** "Inside China's Tech Boom"
3-1 *Masterpiece "World on Fire"*
3-3 *Nature "Spy in the Ocean," Pt. 3*

Monday 13th

- 6:00 3-2 PBS News Hour**
3-1 *PBS NewsHour*
- 7:00 3-2 Antiques Roadshow**
3-1 *Inside the Warren Commission*
- 8:00 3-2 Town Called Victoria, Pts. 1 & 2**
3-1 *Bob Dole, Italy and World War II*
3-1 *Antiques Roadshow*
3-3 *Hotel Portofino*
- 10:00 3-2 Today's Wild West**
3-1 *Amanpour and Company*
3-3 *Masterpiece "World on Fire"*
- 10:30 3-2 Texas Parks and Wildlife**
- 11:00 3-2 Antiques Roadshow**
3-1 *PBS NewsHour*
3-3 *Masterpiece "Annika"*
- 12:00 3-2 PBS NewsHour**
3-1 *Town Called Victoria, Pts. 1 & 2*
3-3 *Tell Me More with Kelly Corrigan*

Tuesday 14th

- 6:00 3-2 PBS NewsHour**
3-1 *PBS NewsHour*
- 7:00 3-2 Finding Your Roots**
3-1 *Native America*
- 8:00 3-2 Native America**
"Language is Life"
3-1 *Reciprocity Project*
- 9:00 3-2 Town Called Victoria, Pt. 3**
3-3 *Antiques Roadshow*
3-1 *Finding Your Roots*

- 10:00 3-2 Commitment to Peace**
3-1 *Amanpour and Company*
3-3 *History Detectives*
- 11:00 3-2 Amanpour and Company**
3-1 *PBS NewsHour*
3-3 *Nature "Spy in the Ocean," Pt. 3*
- 12:00 3-2 PBS NewsHour**
3-1 *Town Called Victoria, Pt. 3*
3-3 *America's Heartland*

Wednesday 15th

- 6:00 3-2 PBS NewsHour**
3-1 *PBS NewsHour*
- 7:00 3-2 Nature** "Spy in the Ocean," Pt. 4
3-1 *Town Called Victoria, Pts. 1 & 2*
- 8:00 3-2 Nova** "The Battle to Beat Malaria"
- 9:00 3-2 Secrets of the Dead**
"Hidden in the Amazon"
3-1 *Nature "Spy in the Ocean," Pt. 4*
3-3 *Finding Your Roots*

- 10:00 3-2 Healthy Minds** "Bipolar Disorder"
3-1 *Amanpour and Company*
3-3 *Pati's Mexican Table*
- 10:30 3-2 This Old House**
3-3 *J. Schwanke's Life in Bloom*
- 11:00 3-2 Amanpour and Company**
3-1 *PBS NewsHour*
3-3 *Travels with Darley*
- 11:30 3-3 Rick Steves' Europe**
- 12:00 3-2 PBS NewsHour**
3-1 *Nova "The Battle to Beat Malaria"*
3-3 *Reconnecting Roots*

Thursday 16th

- 6:00 3-2 PBS NewsHour**
3-1 *PBS NewsHour*
- 7:00 3-2 Inside the Warren Commission**
3-1 *Town Called Victoria, Pt. 3*
- 8:00 3-2 Song of the Mountains**
3-1 *Red Green Show*

A Town Called VICTORIA

A Town Called Victoria is a three-part docuseries that chronicles the 2017 arson of a Texas Mosque as a quiet but resilient community reckons with what drove a man to hate. The three episodes are entitled "The Fire," "The Suspect" and "The Trial."

On January 28, 2017, a mosque in the South Texas town of Victoria burned to the ground. After building lives here for more than 30 years, leaders of Victoria's Muslim community watch in horror as their spiritual and communal home is destroyed.

The story of Victoria makes headlines around the world, but when the cameras turn away, Victoria must face its age-old political, racial, and economic divides, and begin the hard work of changing itself for the better. However, all are shocked when Marq Vincent Perez, a local Hispanic man, is arrested for burning the mosque.

Mon 13th 8pm, Pts. 1 & 2 (3-2) Wed 15th 7pm, Pts. 1 & 2 (3-1)
Tue 14th 9pm, Pt. 3 (3-2) Thu 16th 7pm, Pt. 3 (3-1)



3-2 Daytime

KENW-TV, Channel 3-4, Schedule for FNX available at fnx.org/schedule.

WEEKDAYS

- 1:00 am Classic Arts Showcase (4-1/2 hrs.)
- 5:30 am Wai Lana Yoga
- 6:00 am Classical Stretch
- 6:30 am BBC World News
- 7:00 am–11:00 am PBS Kids (M–Th)
- 7:00 am–12:00 noon PBS Kids (Friday only)
- 11:00 am Cook's Country (M)
- America's Test Kitchen (Tu)
- Ultimate Guide to Fly Fishing (W)
- The Key Ingredient (Th)
- 11:30 am Pati's Mexican Table (M)
- Knit and Crochet Now (Tu)
- American Woodshop (W) (ends 8th)
- Garage w/Steve Butler (begins 15th)**
- Ciao Italia (Th) (ends 9th)
- Lidia's Kitchen (begins 16th)
- 12:00 pm Sit and Be Fit (MWF)
- Creative Living (TuTh)
- 12:30 pm J. Schwanke's Life in Bloom (M)
- Fit to Stitch (Tu)
- Fons & Porter's Love of Quilting (W)
- Welcome to My Studio (Th)
- Painting and Travel (F)
- 1:00 pm–4:30 pm PBS Kids
- 4:30 pm Gzero World with Ian Bremmer (M)
- Dooky Chase Kitchen (Tu)
- Jazzy Vegetarian (W)
- Journeys In Japan (Th)
- Welcome to my Farm (F)
- 5:00 pm Washington Week (M)
- Milk Street (Tu)
- News 3 New Mexico (W)
- (except 22nd)
- Start Up
- News 3 New Mexico (except 24th)
- 5:30 pm BBC World News America

SATURDAYS

- 1:00 am Classic Arts Showcase (5 hrs.)
- 6:00 am American Woodshop
- (ends 11th)
- Garage with Steve Butler**
- (begins 18th)**
- 6:30 am Texas Parks & Wildlife
- 7:00 am Cook's Country
- 7:30 am Ciao Italia (ends 11th)
- Lidia's Kitchen (begins 18th)
- 8:00 am America's Test Kitchen
- 8:30 am The Key Ingredient
- 9:00 am Dooky Chase Kitchen
- 9:30 am Motorweek
- 10:00 am Central Texas Gardener
- 10:30 am Garden Smart
- 11:00 am Paint This with Jerry Yarnell
- 11:30 am Joy of Painting
- 12:00 pm Painting and Travel
- 12:30 pm Quilt in a Day
- 1:00 pm Quilting Arts
- 1:30 pm Fons & Porter's Love of Quilting
- 2:00 pm Creative Living
- 2:30 pm Jazzy Vegetarian
- 3:00 pm Knit & Crochet Now
- 3:30 pm This Old House
- 4:00 pm Ask This Old House
- 4:30 pm Welcome to my Studio
- 5:00 pm Sewing with Nancy
- 5:30 pm Fit 2 Stitch



The new season of **Garage with Steve Butler** begins. From a Swedish corner cabinet to a child's paddle boat, Steve emphasizes the fun and creativity of woodworking.

SUNDAYS

- 1:00 am Classic Arts Showcase (5 hrs.)
- 6:00 am Painting and Travel
- 6:30 am Samantha Brown's Places to Love
- 7:00 am Antiques Roadshow
- 8:00 am Classic Gospel
- 9:00 am Joy of Music
- 9:30 am Music & the Spoken Word
- 10:00 am Finding Your Roots (except 26th)
- SuperAgers: Getting Old, Living Young (26th)
- 10:30 am England Made with Love (26th)
- 11:00 am Cultura Special "Balloon Festival" (5th)
- New Mexico in Focus (except 26th)
- 12:00 pm Pati's Mexican Table (except 26th)
- America's Home Cooking: Easy Recipes for Thrift (26th, 2 hrs.)
- 12:30 pm Texas Parks (except 26th)
- 1:00 pm Into the Night (5th, 2 hrs.)
- Desert Speaks (except 5th, 26th)
- 1:30 pm Closer to Truth (except 5th, 26th)
- 2:00 pm Inside Warren Commission (12th)
- JFK: Breaking the News (19th)
- The Mavericks (26th)
- 3:00 pm Medical Frontiers
- 3:30 pm Healthy Minds (ends 5th)
- Medical Stories (begins 12th)
- Classic Gospel
- 4:00 pm You Should Know (except 19th, 26th)
- Great Performances "Making Shakespeare: First Folio" (19th)
- 5 Minute Yoga Fix (26th)
- Great Performances "Message in a Bottle" (5th)
- Rick Steves' Europe (12th only)
- 5:30 pm

- 8:30 3-1 *You Should Know*
- 9:00 3-2 **SportsLook with Doc Elder**
- 3-1 *Creative Living*
- 3-3 *Secrets of the Dead*
- 9:30 3-2 **Red Green Show** "Engagement"
- 3-1 *SportsLook with Doc Elder*
- 10:00 3-2 **Live from the Old Steeple**
- 3-1 *Amanpour and Company*
- 3-3 *Nature "Spy in the Ocean," Pt. 4*
- 11:00 3-2 **Amanpour and Company**
- 3-1 *PBS NewsHour*
- 3-3 *Nova*
- 12:00 3-2 **PBS NewsHour**
- 3-1 *Chavis Chronicles*
- 3-3 *Closer to the Truth*

Friday 17th

- 6:00 3-2 **PBS NewsHour**
- 3-1 *PBS NewsHour*
- 7:00 3-2 **Market to Market**
- 3-1 *Washington Week*
- 7:30 3-2 **Consuelo Mack Wealthtrack**
- 3-1 *Firing Line*
- 8:00 3-2 **Washington Week**
- 3-1 *Nova "The Battle to Beat Malaria"*
- 8:30 3-2 **Firing Line**
- 9:00 3-2 **Great Performance** "Making Shakespeare: The First Folio"
- 3-1 *Stranger at Home: Healing the Psychological Wounds*
- 3-3 *This Old House*

- 9:30 3-3 *Ask This Old House*
- 10:00 3-1 *Amanpour and Company*
- 3-3 *American Woodshop*
- 10:30 3-3 *Woodsmith Shop*
- 11:00 3-2 **Hotel Portofino**, Pt. 5
- 3-1 *PBS NewsHour*
- 3-3 *Joy of Painting*
- 11:30 3-3 *Painting and Travel*
- 12:00 3-2 **PBS NewsHour**
- 3-1 *Astrid*
- 3-3 *Start Up*

Saturday 18th

- 6:00 3-2 **Report from Santa Fe**
- 3-1 *Antiques Roadshow "Vintage Dallas"*
- 6:30 3-2 **America's Heartland**
- 7:00 3-2 **Lawrence Welk Show**
- "Thanksgiving (Norma Zimmer)"
- 3-1 *Great Performances "Making Shakespeare: The First Folio"*
- 8:00 3-2 **Curious Traveler** "Aix-en-Provence"
- 8:30 3-2 **Red Green Show** "Electrical Project"
- 3-3 *Mister Rogers' Neighborhood*
- 9:00 3-2 **Austin City Limits** "Foo Fighters"
- 3-1 *Darin and Brooke Aldridge*
- 3-3 *Lawrence Welk Show*
- 9:30 3-1 *Taco Mafia*

- 10:00 3-2 **Nova** "The Battle to Beat Malaria"
- 3-1 *Austin City Limits*
- 3-3 *Classic Gospel*
- 11:00 3-2 **Nature** "Spy in the Ocean," Pt. 4
- 3-1 *Nova "The Battle to Beat Malaria"*
- 3-3 *Woodsongs*
- 12:00 3-2 **Austin City Limits** "Foo Fighters"
- 3-1 *Nature "Spy in the Ocean," Pt. 4*
- 3-3 *Song of the Mountains*

Sunday 19th

- 5:00 3-2 **Great Performances** "Making Shakespeare: The First Folio"
- 6:00 3-1 *Hotel Portofino*
- 7:00 3-2 **Hotel Portofino**, Pt. 6
- 3-1 *Masterpiece "World on Fire"*
- 8:00 3-2 **Masterpiece** "World on Fire," Pt. 6
- 3-1 *Masterpiece "Annika"*
- 9:00 3-2 **Masterpiece** "Annika," Pt. 6
- 3-1 *Stories I Didn't Know*
- 3-3 *Daytripper*
- 9:30 3-3 *America's Heartland*
- 10:00 3-2 **Secrets of the Dead**
- "Hidden in the Amazon"
- 3-1 *Keeper of the Flame*
- 3-3 *This Old House*
- 10:30 3-3 *Ask This Old House*
- 11:00 3-2 **Finding Your Roots** "Mexican Roots"
- 3-3 *Motorweek*

3-1 Daytime

MONDAYS

1:00 am	Classic Arts Showcase (4 hrs.)
5:00 am	Classical Stretch
5:30 am	Happy Yoga
6:00 am	New Mexico in Focus
7:00 am	World's Greatest Cemeteries II
7:30 am	Travel Detective
8:00 am	Rick Steves' Europe
8:30 am	Jacques Pepin: Heart & Soul
9:00 am	Pati's Mexican Table
9:30 am	Kevin Belton's Cookin' Louisiana
10:00 am	Growing a Greener World
10:30 am	Jazzy Vegetarian
11:00 am	Classical Stretch
11:30 am	Sit and Be Fit
12:00 pm	Hotel Portofino (ends 20th)
	Lucy Worsley's Royal Myths, Pt. 1 (27th)
1:00 pm	Masterpiece "World on Fire" (ends 20th)
	Lucy Worsley's Royal Myths, Pt. 2 (27th)
2:00 pm	Masterpiece "Annika" (ends 20th)
	Lucy Worsley's Royal myths, Pt. 3 (27th)
3:00 pm	Travels with Darley
3:30 pm	Crossing South
4:00 pm	America's Heartland
4:30 pm	Daytripper
5:00 pm	Texas Parks and Wildlife
5:30 pm	BBC World News America

THURSDAYS

1:00 am	Classic Arts Showcase (4 hrs.)
5:00 am	Classical Stretch
5:30 am	Happy Yoga
6:00 am	Story in the Public Square
6:30 am	Canada Files
7:00 am	Texas Parks & Wildlife
7:30 am	Boondock Nation
8:00 am	Antiques Roadshow
9:00 am	Fons & Porters Love of Quilting
9:30 am	Quilting Arts
10:00 am	Fresh Quilting
10:30 am	Fit 2 Stitch
11:00 am	Classical Stretch
11:30 am	Happy Yoga
12:00 pm	Milk Street
12:30 pm	Lucky Chow
1:00 pm	Ciao Italia
1:30 pm	Jacques Pepin: Heart & Soul
2:00 pm	Nature "Spy in the Ocean" TBA (22nd)
	Islands of Wonder "Madagascar" (30th)
3:00 pm	Secrets of the Dead (ends 23rd)
	Kings of the Sky "Andes" (30th)
4:00 pm	Nova
5:00 pm	Healthy Minds
5:30 pm	BBC World News America

TUESDAYS

1:00 am	Classic Arts Showcase (4 hrs.)
5:00 am	Classical Stretch
5:30 am	Happy Yoga
6:00 am	Antiques Roadshow
7:00 am	Samantha Brown's Places to Love
7:30 am	Reconnecting Roots
8:00 am	Closer to Truth
8:30 am	Tell Me More with Kelly Corrigan
9:00 am	School of Greatness
9:30 am	Your Fantastic Mind
10:00 am	Getting Dot Older II
10:30 am	Your Fountain of Youth
11:00 am	Classical Stretch
11:30 am	Happy Yoga
12:00 pm	Christina Cooks
12:30 pm	My Greek Table
1:00 pm	New Scandinavian Cooking
1:30 pm	Taste of History
2:00 pm	History Detectives
3:00 pm	Antiques Roadshow
4:00 pm	Consuelo Mack Wealthtrack
4:30 pm	Start Up
5:00 pm	Firing Line
5:30 pm	BBC World News America



FRIDAYS

1:00 am	Classic Arts Showcase (4 hrs.)
5:00 am	Classical Stretch
5:30 am	Yndi Yoga
6:00 am	America's Heartland
6:30 am	Garden Smart
7:00 am	Song of the Mountains
8:00 am	Songs at the Center
8:30 am	Cavern Sessions
9:00 am	Woodsongs (ends 10th)
	Live from the Old Steeple (begins 17th)
10:00 am	Joy of Painting
10:30 am	Painting and Travel
11:00 am	Classical Stretch
11:30 am	Sit and Be Fit
12:00 pm	This Old House
12:30 pm	Ask This Old House
1:00 pm	Radical Restoration (ends 17th)
	Behind the Wings (begins 24th)
1:30 pm	Sewing with Nancy
2:00 pm	Creative Living
2:30 pm	Weekends with Yankee
3:00 pm	Boondock Nation
3:30 pm	S. Brown's Places to Love
4:00 pm	Good Road
4:30 pm	Gzero World with Ian Bremmer
5:00 pm	News 3 New Mexico (except 24th)
	Two Wars: Road to Integration (24th only)
5:30 pm	BBC World News America

WEDNESDAYS

1:00 am	Classic Arts Showcase (4 hrs.)
5:00 am	Classical Stretch
5:30 am	Happy Yoga
6:00 am	Whitney Reynolds Show
6:30 am	Start Up
7:00 am	Travels with Darley
7:30 am	Renaissance Woman Restored (1st)
	Crossing South (begins 8th)
8:00 am	History Detectives
9:00 am	Key Ingredient with Sheri
9:30 am	J. Schwanke's Life in Bloom
10:00 am	American Woodshop
10:30 am	Woodsmith Shop
11:00 am	Classical Stretch
11:30 am	Sit and Be Fit
12:00 pm	Sara's Weeknight Meals
12:30 pm	Cook's Country
1:00 pm	Dooky Chase Kitchen
1:30 pm	Tim Farmer's Country Kitchen
2:00 pm	Steven Raichlen's Planet BBQ
2:30 pm	Reconnecting Roots
3:00 pm	No Passport Required (ends 22nd)
	Indigenize the Plate (begins 29th)
4:00 pm	Lidia's Kitchen
4:30 pm	America's Test Kitchen
5:00 pm	News 3 New Mexico (except 22nd)
	SuperAgers (22nd only)
5:30 pm	BBC World News America

SATURDAYS

11:00 am	Kevin Belton's New Orleans
11:30 am	Pati's Mexican Table
12:00 pm	This Old House
12:30 pm	This Old House
1:00 pm	Ask This Old House
1:30 pm	Motorweek
2:00 pm	Paint This with Jerry Yarnell
2:30 pm	Chef's Life (ends 4th)
	Key Ingredient (begins 11th)
3:00 pm	America's Test Kitchen
3:00 pm	Cook's Country
4:00 pm	Nature "Spy in the Ocean" (ends 18th)
	TBA (25th)
5:00 pm	PBS News Weekend
5:30 pm	Report from Santa Fe

SUNDAYS

10:30 am	Brain-Gut Connection (26th only)
11:00 am	Washington Week (except 26th)
11:30 am	Energy Switch
12:00 pm	New Mexico in Focus (except 26th)
	Finance for the People (26th only)
1:00 pm	Consuelo Mack Wealthtrack (except 26th)
1:30 pm	Market to Market
2:00 pm	Growing a Greener World
2:30 pm	J. Schwanke Life in Bloom
3:00 pm	Celebrity Antique Roadshow
4:00 pm	Nova
5:00 pm	PBS News Weekend (except 26th)
	Classicalia (26th only)
5:30 pm	Closer to Truth (except 26th)

- 11:30 3-3 *Texas Parks and Wildlife*
3-1 *Bookstour*
12:00 3-2 *Nova* "The Battle to Beat Malaria"
3-1 *Masterpiece* "World on Fire"
3-3 *Nature* "Spy in the Ocean," Pt. 4

Monday 20th

- 6:00 3-2 **PBS NewsHour**
3-1 *PBS NewsHour*
7:00 3-2 **Antiques Roadshow** "Vintage Dallas"
3-1 *To Be of Service*
8:00 3-2 **JFK: Breaking the News**
8:30 3-1 *Two Wars: The Road To Integration*
9:00 3-2 **POV** "Wisdom Gone Wild"
3-1 *Antiques Roadshow*
3-3 *Hotel Portofino*
10:00 3-1 *Amanpour and Company*
3-3 *Masterpiece* "World on Fire"
10:30 3-2 **Texas Parks and Wildlife**
11:00 3-2 **Antiques Roadshow** "
3-1 *PBS NewsHour*
3-3 *Masterpiece* "Annika"
12:00 3-2 **PBS NewsHour**
3-1 *POV* "Wisdom Gone Wild"
3-3 *Tell Me More with Kelly Corrigan*

Tuesday 21st

- 6:00 3-2 **PBS NewsHour**
3-1 *PBS NewsHour*
7:00 3-2 **Groundbreakers**
3-1 *Fighting Indians*
9:00 3-2 **You Should Know**
3-1 *Dear Sirs*
3-3 *Antiques Roadshow*
9:30 3-2 **Frontline** "20 Days in Mariupol"
10:00 3-1 *Amanpour and Company*
3-3 *History Detectives*
11:00 3-2 **Amanpour and Company**
3-1 *PBS NewsHour*
3-3 *Nature*
12:00 3-2 **PBS NewsHour**
3-1 *Frontline* "20 Days in Mariupol"
3-3 *America's Heartland*

Wednesday 22nd

- 6:00 3-2 **PBS NewsHour**
3-1 *PBS NewsHour*
7:00 3-2 **Andes: Kingdoms of the Sky**
3-1 *JFK: Breaking the News*
8:00 3-2 **Nova** "Lee and Liza's Family Tree"
3-1 *Secrets of the Dead*
9:00 3-2 **Secrets of the Dead** "Princes in the Tower"
3-1 *Earth Shot Prize 2023*
3-3 *Groundbreakers*
10:00 3-2 **Healthy Minds** "Living with Bipolar"
3-1 *Amanpour and Company*
10:30 3-2 **This Old House**
11:00 3-2 **Amanpour and Company**
3-1 *PBS NewsHour*
3-3 *Travels with Darley*
11:30 3-3 *Rick Steves' Europe*
12:00 3-2 **PBS NewsHour**
3-1 *Nova* "Lee and Liza's Family Tee"
3-3 *Reconnecting Roots*

Thursday 23rd

- 6:00 3-2 **PBS NewsHour**
3-1 *PBS NewsHour*
7:00 3-2 **Frontline** "20 Days in Mariupol"
3-1 *Groundbreakers*
8:30 3-2 **Songs at the Center**
9:00 3-2 **First Official Thanksgiving**
3-1 *Creative Living*
3-3 *Secrets of the Dead*
9:30 3-2 **Red Green Show** "Folk Art Convention"
3-1 *You Should Know*
10:00 3-2 **Live from the Old Steeple**
3-1 *Amanpour and Company*
3-3 *Golden Eagles: Witnesses to a Changing West*

Our KENW Supporters

Please join us in thanking and supporting these businesses and organizations that help make our programming possible.

Call Rena Garrett at 575 562-2112 for TV or Evelyn Ledbetter for FM to add your support.

In Support of KENW-TV

Anderson Bethany Funeral Home
and Crematory, Roswell
Chaves County Farm and Livestock Bureau,
Dexter and Roswell
CJ's Pill Box, Portales
Clovis Community College Cultural Art
Series
Eastern New Mexico News, Clovis and
Portales
Eastern New Mexico University, Portales
Farmers' Electric Cooperative, Inc. of NM,
Clovis
Featherstone Development Corp., Roswell
Friends of Living Desert, Carlsbad
Havenor Operating Company, Roswell
James Polk Stone Community Bank
Clovis, Eunice, Hagerman, Hobbs,
Portales, Roswell, Carlsbad
Living Desert Zoo & Gardens State Park,
Carlsbad
New Mexico Department of Agriculture
Paul and Elise Schmidt
Plateau, Clovis

Roosevelt County Electric Cooperative
Security State Bank, Farwell, TX
Sew Irresistible Quilt Shop, Farwell, TX
Valley Mower Clinic, Inc., Clovis
Yucca, Portales

In Support of KENW-FM

Atwood, Malone, Turner & Sabin,
Attorneys at Law, Roswell
City of Carlsbad, NM
City of Raton, NM
Featherstone Development Corp., Roswell
First Presbyterian Church, Roswell
Historic Eklund Hotel, Clayton, NM
jf maddox foundation
New Mexico Arts
paper trail..., Las Vegas, NM
Roswell Jazz Festival
Taco Box, Clovis and Portales
Taylor Water Well Service, Carlsbad
United Supermarkets, Market Street,
Albertsons' Market
Western Heritage Museum Lea County,
Cowboy Hall of Fame, Hobbs

Thank You for Your Support!

Saturday 25th

- 11:00 3-2 **Amanpour and Company**
3-1 *PBS NewsHour*
3-3 *Nova*
12:00 3-2 **PBS NewsHour**
3-1 *Chavis Chronicles*
3-3 *Closer to the Truth*

Friday 24th

- 6:00 3-2 **PBS NewsHour**
3-1 *PBS NewsHour*
7:00 3-2 **Market to Market**
3-1 *Washington Week*
7:30 3-2 **Consuelo Mack Wealthtrack**
3-1 *Firing Line*
8:00 3-2 **Washington Week**
3-1 *Nova* "Lee and Liza's Family Tree"
8:30 3-2 **Firing Line**
9:00 3-2 **Great Performances** "Celebrating 50 Years of Broadway's Best"
3-1 *Frontline* "20 Days in Mariupol"
3-3 *This Old House*
9:30 3-3 *Ask This Old House*
10:00 3-3 *American Woodshop*
10:30 3-2 **Hotel Portofino**, Pt. 6
3-1 *Send Me*
3-3 *Woodsmith Shop*
11:00 3-1 *PBS NewsHour*
3-3 *Joy of Painting*
11:30 3-3 *Painting and Travel*
3-2 **Rick Steves' Europe**
12:00 3-2 **PBS NewsHour**
3-1 *Astrid*
3-3 *Start Up*

- 6:00 3-2 **Report from Santa Fe**
3-1 *Story Road*
6:30 3-2 **America's Heartland**
3-1 *Celtic Woman 20th Anniversary*
7:00 3-2 **The Highwaymen – Live**
8:30 3-2 **Neil Diamond: Thank You Australia**
3-1 *Bee Gees: One Night Only*
3-3 *Music & Might*
9:00 3-2 **Nova** "Lee and Liza's Family Tree"
3-1 *ACL Presents: 22nd Annual Americana Honors*
3-3 *Classic Gospel*
11:00 3-2 **Himalaya: Kingdoms of the Sky**
3-1 *Nova* "Lee and Liza's Family Tree"
3-3 *Woodsongs*
12:00 3-2 **ACL Presents: 22nd Annual Americana Honors**
3-1 *Golden Eagles: Witnesses to a Changing West*
3-3 *Song of the Mountains*

Sunday 26th

- 6:00 3-2 **Barbra Streisand: Back to Brooklyn**
6:30 3-1 *Steve & Eydie: Memories of My Mom and Dad*
8:00 3-2 **Celtic Woman 20th Anniversary**
8:30 3-1 *Everly Brothers: Harmonies from Heaven*
9:00 3-3 *Daytripper*
9:30 3-3 *America's Heartland*
10:00 3-2 **Secrets of the Dead** "Princes in the Tower"
3-1 *POV* "Wisdom Gone Wild"
3-3 *This Old House*

Channel 3-2

WEEKDAYS

7:00 am Wild Kratts
7:30 am Curious George
8:00 am Daniel Tiger's Neighborhood
8:30 am Rosie's Rules
9:00 am Sesame Street
9:30 am Work It Out Wombats!
10:00 am Donkey Hodie
10:30 am Pinkalicious & Peterrific
11:00 am Albie's Elevator (F)
11:30 am Mister Rogers (F)

1:00 pm Elinor Wonders Why
1:30 pm Nature Cat
2:00 pm Hero Elementary
2:30 pm Molly of Denali
3:00 pm Alma's Way
3:30 pm Arthur
4:00 pm Odd Squad



Pinkalicious & Peterrific is an animated series that inspires children ages 4–8 to explore the arts and express themselves creatively. The series brings music, dance, theatre and visual arts to life through the adventures of Pinkalicious, her brother Peter, and their many friends.

Channel 3-3

WEEKDAYS

5:00 am Molly of Denali
5:30 am Alma's Way
6:00 am Wild Kratts
6:30 am Curious George
7:00 am Daniel Tiger's Neighborhood
7:30 am Rosie's Rules
8:00 am Sesame Street
8:30 am Work It Out Wombats!
9:00 am Donkey Hodie
9:30 am Pinkalicious & Peterrific
10:00 am Elinor Wonders Why
10:30 am Nature Cat
11:00 am Hero Elementary
11:30 am Xavier Riddle and the Secret Museum
12:00 pm Daniel Tiger's Neighborhood
12:30 pm Rosie's Rules
1:00 pm Sesame Street
1:30 pm Work It Out Wombats!
2:00 pm Donkey Hodie
2:30 pm Pinkalicious & Peterrific
3:00 pm Elinor Wonders Why
3:30 pm Nature Cat
4:00 pm Hero Elementary
4:30 pm Xavier Riddle and the Secret Museum
5:00 pm Sesame Street
5:30 pm Daniel Tiger's Neighborhood
6:00 pm Molly of Denali
6:30 pm Clifford The Big Red Dog
7:00 pm Super Why!
7:30 pm Wordgirl
8:00 pm Arthur
8:30 pm Odd Squad

SATURDAYS

5:00 am Molly of Denali
5:30 am Mister Rogers
6:00 am Wild Kratts
6:30 am Curious George
7:00 am Work It Out Wombats!
7:30 am Daniel Tiger's Neighborhood
8:00 am Sesame Street
8:30 am Rosie's Rules
9:00 am Donkey Hodie
9:30 am Pinkalicious & Peterrific
10:00 am Dinosaur Train
10:30 am Cyberchase
11:00 am Let's Go Luna!
11:30 am Alma's Way
12:00 pm Sesame Street
12:30 pm Daniel Tiger's Neighborhood
1:00 pm Mister Rogers
1:30 pm Arthur
2:00 pm Donkey Hodie
2:30 pm Curious Crew
3:00 pm Molly of Denali
3:30 pm Wild Kratts
4:00 pm Albie's Elevator
4:30 pm Work It Out Wombats!
5:00 pm Sesame Street
5:30 pm Daniel Tiger's Neighborhood
6:00 pm Rosie's Rules
6:30 pm Pinkalicious & Peterrific
7:00 pm Dinosaur Train
7:30 pm Cyberchase
8:00 pm Arthur
8:30 pm Mister Rogers

SUNDAYS

5:00 am Molly of Denali
5:30 am Mister Rogers
6:00 am Wild Kratts
6:30 am Curious George
7:00 am Work It Out Wombats!
7:30 am Daniel Tiger's Neighborhood
8:00 am Sesame Street
8:30 am Rosie's Rules
9:00 am Donkey Hodie
9:30 am Pinkalicious & Peterrific
10:00 am Dinosaur Train
10:30 am Cyberchase
11:00 am Let's Go Luna!
11:30 am Alma's Way
12:00 pm Sesame Street
12:30 pm Daniel Tiger's Neighborhood
1:00 pm Mister Rogers
1:30 pm Arthur
2:00 pm Donkey Hodie
2:30 pm Curious Crew
3:00 pm Molly of Denali
3:30 pm Wild Kratts
4:00 pm Albie's Elevator
4:30 pm Work It Out Wombats!
5:00 pm Sesame Street
5:30 pm Daniel Tiger's Neighborhood
6:00 pm Rosie's Rules
6:30 pm Pinkalicious & Peterrific
7:00 pm Dinosaur Train
7:30 pm Cyberchase
8:00 pm Arthur
8:30 pm Mister Rogers



Channel 3-1

SATURDAYS

5:00 am Mister Rogers
5:30 am Arthur
6:00 am Molly of Denali
6:30 am Alma's Way
7:00 am Wild Kratts
7:30 am Curious George
8:00 am Work It Out Wombats!
8:30 am Daniel Tiger's Neighborhood
9:00 am Sesame Street
9:30 am Rosie's Rules
10:00 am Donkey Hodie
10:30 am Pinkalicious & Peterrific

SUNDAYS

5:00 am Mister Rogers
5:30 am Arthur
6:00 am Molly of Denali
6:30 am Alma's Way
7:00 am Wild Kratts
7:30 am Curious George
8:00 am Work It Out Wombats!
8:30 am Daniel Tiger's Neighborhood
9:00 am Sesame Street
9:30 am Rosie's Rules
10:00 am Donkey Hodie
10:30 am Pinkalicious & Peterrific

KENW-FM Radio Week at-a-Glance

KENW-FM, Portales, NM, 89.5 MHz — KMTN-FM, Maljamar, NM, 98.7 MHz — KENM-FM, Tucumcari, NM, 88.9 MHz —
 KENU-FM, Des Moines, NM, 88.5 MHz — KENG-FM, Ruidoso, NM, 88.5 MHz — KENE-FM, Raton, NM, 88.1 MHz —
 KNMJ-FM, Eunice, NM, 100.9 MHz

Translators: Apache Springs, 90.9 MHz; Clayton, 93.5 MHz; Des Moines, 106.1MHz; Ft.Sumner,91.7MHz;
 Las Vegas, 88.1 MHz; Roswell, 91.1 MHz; Wagon Mound, 92.1 MH

	Sunday	Monday	Tuesday	Wednesday	Thursday	Friday	Saturday	Monday through Friday
5:00	Travel with Rick Steves	Morning Edition	Morning Edition	Morning Edition		Morning Edition	5:00 a.m. People's Pharmacy	Weather: 5:18, 6:18, and 7:18 a.m. Regional News: 5:33, 6:33, and 7:33 a.m.
6:00	Weekend Edition						6:00 a.m. Weekend Edition	5:06 & 7:06 Innovation Now
7:00							8:00 a.m. Planet Money & How I Built This	5:42 & 7:42 Loh Down on Science
8:00	With Heart and Voice	Music	Music	Music	Music	Music	9:00 a.m. Wait, Wait... Don't Tell Me	5:49 & 7:49 Melinda's Garden Moment
9:00	Footlight Parade						10:00 a.m. Bioneers	6:06 Climate Connections
10:00	Radiolab						10:30 a.m. New Letters	6:42 Science Update
11:00	Fresh Air Weekend with Terry Gross						11:00 a.m. Opera	6:49 90 Second Naturalist
12:00	People's Pharmacy (R)						2:30 p.m. Nothing Funny About Money (when length of opera permits)	8:01 Marketplace Report
1:00	This American Life						3:00 p.m. Classical Guitar Alive	8:15 Animal Airwaves (MWF) Kindness Moment (Tu, Th)
2:00	Freakonomics						4:00 p.m. WoodSongs	8:20 Nature Notes (Tu) Travelers in the Night (W) A Southwest Spotlight (F)
3:00	Mountain Stage	3:00 p.m. Report from Santa Fe	Best of Knowledge	51 Percent	With Good Reason	2:30 pm A Way With Words	8:30 Health in a Heartbeat	
3:30		Marketplace	Marketplace	Marketplace	Marketplace	Marketplace	8:45 Insight	
4:00		All Things Considered	All Things Considered	All Things Considered	All Things Considered	All Things Considered	9:00 Weather/News	
4:30		All Things Considered	All Things Considered	All Things Considered	All Things Considered	All Things Considered	9:15 Marketplace Tech Report	
5:00	Thistle & Shamrock						9:30 Disability Awareness	
6:00	All Things Considered	PBS NewsHour	PBS NewsHour	PBS NewsHour	PBS NewsHour	PBS NewsHour	9:45 EarthDate	
7:00	Chamber Music Lincoln Center	Chicago Symphony Orchestra	New York Philharmonic	Milwaukee Symphony Orchestra	Collectors' Corner	Concierto with Frank Dominguez Fiesta!	Swingin' Down the Lane	10:00 Weather/News/Regional News
8:00	Santa Fe Chamber Music						Jazz Night in America	10:15 Engines of Our Ingenuity
9:00	The Romantic Hours	Performance Today	Performance Today	Performance Today	Performance Today	Performance Today	Jazz at 100	10:30 Composers' Datebook
10:00	Performance Today						DreamFarm Radio	10:45 Author's Corner
11:00	Classical Music Out of the Night until 5:00 a.m.	Classical Music Out of the Night until 5:00 a.m.	Classical Music Out of the Night until 5:00 a.m.	Classical Music Out of the Night until 5:00 a.m.	Classical Music Out of the Night until 5:00 a.m.	Classical Music Out of the Night until 5:00 a.m. when People's Pharmacy begins.	Classical Music Out of the Night until 5:00 a.m. when Travel with Rick Steves	11:00 Weather/News
								11:15 Melinda's Garden Moment
								11:30 The Plant Detective
								11:45 Climate Connections
								12:00 Weather/News/Regional News
								12:30 Today in Rock & Roll History
								12:35 Great Arts at Eastern (Th)
								12:45 People's Pharmacy News (M)
								Poetry Now (T)
								Dumb Ideas (W)
								Medical Discoveries News (Th)
								Science and the Sea (F)
								1:00 Weather/News
								1:06 Asian View
								1:15 Sound Beat
								1:30 Loh Down on Science
								1:20 A Southwest Spotlight (W)
								1:45 StarDate
								2:00 Weather/News/Regional News
								2:15 Bird Note
								2:30 The American Storyteller
								2:45 90 Second Naturalist/ Innovation Now
								4:20 Earthdate
								4:50 & 5:50 p.m. Weather
								5:20 The Plant Detective
								6:57 StarDate/Weather
								9:00 Weather/News
								12:00 & 3:00 a.m. Weather/News

The Q2-3 Program Guide (Cue to 3) is published each month by the Broadcast Center, a non-profit public service division of Eastern New Mexico University.

The guide is available to friends contributing \$35 per year or more to the support of public broadcasting. Senior Citizen and Student memberships are available for \$25. All contributions are tax deductible. Donations should be made payable to Friends of KENW-TV or to Friends of KENW-FM. Telephone: (575) 562-2112. Toll-free 1-888-FOR-KENW (367-5369). Fax: (575) 562-2590

Mailing Address:
 KENW-TV/FM
 52 Broadcast Center, ENMU
 1500 South Avenue K
 Portales, NM 88130
 Website: www.kenw.org
 E-Mail: kenwtv@enmu.edu kenwfm@enmu.edu

Eastern New Mexico University is an affirmative action and equal opportunity employer. The University does not discriminate on the basis of race, color, national origin, religion, sex (including pregnancy, gender identity, and sexual orientation), age, disability, genetic information, veteran status, or any other protected status in its programs, activities, or employment. People seeking additional information about the University's non-discrimination policy should contact the Affirmative Action Officer at Station 9.

KENW-TV/FM
 Eastern New Mexico
 University

Opera News

**Saturdays, 11:00 am
on FM Radio**

November 4th
Zorro/Héctor Armienta
Opera Southwest (NM)

November 11th
Der fliegende Hollander/
Wagner
Bayreuth Festival (Germany)

November 18th
Marc' Antonio e Cleopatra/
Hasse
Haymarket Opera (Chicago)

November 25th
Pelléas et Mélisande/
Debussy
LA Opera (Los Angeles)

- 10:30 3-3 *Ask This Old House*
11:00 3-2 *Her Name was Grace Kelly*
3-3 *Motorweek*
11:30 3-1 *Life Begins in Wonder, Let It End in Wonder*
3-3 *Texas Parks and Wildlife*
12:00 3-2 *Nova "Lee and Liza's Family Tree"*
3-1 *Lucy Worsley's Royal Myths*
3-3 *Golden Eagles: Witnesses to a Changing West*

Monday 27th

- 6:00 3-2 *PBS NewsHour*
3-1 *PBS NewsHour*
7:00 3-2 *Finance for the People*
3-1 *Bryan Adam – Live*
8:30 3-2 *Brain-Gut Connection*
3-1 *Ann Wilson & Tripsitter: Live*
9:00 3-3 *Lucy Worsley's Royal Myths*
10:00 3-2 *Today's Wild West*
3-1 *Amanpour and Company*
3-3 *Lucy Worsley's Royal Myths*
10:30 3-2 *Texas Parks and Wildlife*
11:00 3-2 *Antiques Roadshow*
3-1 *PBS NewsHour*
3-3 *Lucy Worsley's Royal Myths*
12:00 3-2 *PBS NewsHour*
3-1 *Secrets of Her Majesty's Secret Service*
3-3 *Tell Me More with Kelly Corrigan*

Tuesday 28th

- 6:00 3-2 *PBS NewsHour*
3-1 *PBS NewsHour*
7:00 3-2 *How Great Thou Art, a Sacred Celebration*
3-1 *5 Minute Yoga Fix*
8:00 3-1 *Americas Home Cooking: Easy Recipes for Thrifty Cooking*
9:00 3-2 *Everly Brothers – Harmonies from Heaven*
3-3 *Antiques Roadshow*

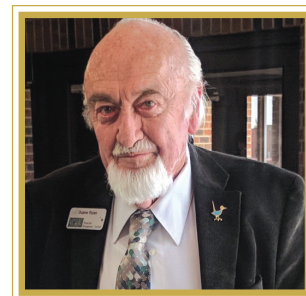
Our KENW Staff

BROADCAST CENTER

Founding Director
Duane W. Ryan
Director of Broadcasting
Porfirio Delgado
Accountant
Crystal Sawyer
Business Associate
Julissa Joyal
Engineering Director
Porfirio Delgado
Engineers
Michael Chandler
Jason Murphy
Lawrence Thompson

KENW-TV STAFF

Programming Director
Sean Moore
Operations Director
Justin Robertson
Programming/
Operations Assistant
Kim Choate
Master Control Operator, TV
David Asplund
Doris Blandford
Wade Martin
Administrative Assistant
Erika Chavez
Development/Promotion
Director
Rena Garrett
Producer/Director, TV
Allan Crawford
Pablito Herrera
Programming Associate
Linda Stefanovic
Editorial Assistant
Wanda Newberry



Duane W. Ryan
Founding Director

KENW-FM STAFF

News Director, FM
Tim Gutierrez
Development Director, FM
Evelyn Ledbetter
Operations Director, FM
Shannon Hearn
Audio Engineer
Mickey Morgan
Administrative Assistant
Suzanne West

ENMU

President/System Chancellor
Dr. James Johnston
Vice President for Academic Affairs
Dr. Jamie Laurenz
Vice President for Academic Support
Mr. Justin Liles (Interim)
Chief Financial Officer
Mr. Tony Major
Vice President for Student Affairs
Dr. Jeffrey Long

- 10:00 3-1 *Amanpour and Company*
3-3 *History Detectives*
10:30 3-2 *Life Begins in Wonder, Let it End in Wonder*
11:00 3-2 *Amanpour and Company*
3-1 *PBS NewsHour*
3-3 *Himalaya: Kingdoms of the Sky*
12:00 3-2 *PBS NewsHour*
3-1 *Lucy Worsley's Royal Myths*
3-3 *America's Heartland*

Wednesday 29th

- 6:00 3-2 *PBS NewsHour*
3-1 *PBS NewsHour*
7:00 3-2 *Rolling Stones Rock and Roll Circus*
3-1 *England Made with Love*
8:30 3-2 *Cyndi Lauper Live...at Last*
3-1 *Gregorian: Pure Chants in concert*
9:00 3-3 *Lucy Worsley's Royal Myths*
10:00 3-2 *Healthy Minds "Mental Health"*
3-1 *Amanpour and Company*
3-3 *Lucy Worsley's Royal Myths*
10:30 3-2 *This Old House*

- 11:00 3-2 *Amanpour and Company*
3-3 *Lucy Worsley's Royal Myths*
3-1 *PBS NewsHour*
12:00 3-2 *PBS NewsHour*
3-1 *Nova "Great Mammoth Mystery"*
3-3 *Good Road*

Thursday 30th

- 6:00 3-2 *PBS NewsHour*
3-1 *PBS NewsHour*
7:00 3-2 *Ann Wilson & Tripsitter: Live*
3-1 *Arrival From Sweden: The Music of ABBA*
8:30 3-2 *Bryan Adams – Live*
3-1 *Yacht Rock Revue: 70s & 80s Music*
3-3 *Andes: Kingdoms of the Sky*
9:00 3-2 *Live from the Old Steeple*
3-1 *SportsLook*
3-3 *Madagascar: Islands of Wonder*
10:30 3-1 *Appalachia Heart*
11:00 3-2 *Amanpour and Company*
3-1 *PBS NewsHour*
12:00 3-2 *PBS NewsHour*
3-1 *Chavis Chronicles*
3-3 *Closer to the Truth*

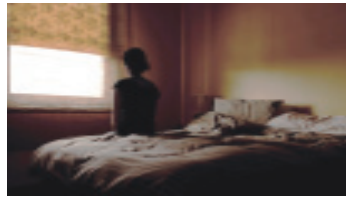
Into the Night: Darkness and Light

Into the Night: Darkness and Light explores the ways we think about death and about our own deaths in particular.

How do we live with death inevitably in our sight? Do we go gently or raging against the night, with equanimity or with anger, with clenched fists or, more commonly, with denial? Or do we see death as something to be fought, or even conquered—a challenge pursued by some of today's brightest minds?

Finally, what are the stories we tell ourselves as we go into the night—or into the light? Do our narratives about religion, science, art, the natural world, or the power of love sustain us or do they fall away at the end?

Into the Night presents the stories of nine fascinating men and women from



various walks of life who are grappling with these questions: young and old, believers and unbelievers, dying and healthy. From a Native American physician to two American Buddhist monks, each has been shocked into mortality—and has been forever changed, their dramatic life experiences revealing as much about life as about death.

However varied their backgrounds, these men and women are united by their uncommon eloquence and intelligence.

Sun 5th 1pm (3-2)

Mon 6th 7pm (3-1)



Death in Britannia

The discovery of a skeleton, dating to the Roman occupation of Britain, provokes further study after scientists see an iron nail driven through its heel bone. Could the remains belong to someone the Romans crucified?

Despite hundreds, if not thousands, of people being crucified in the Roman Empire, only one other crucified ever been found in the world. Who was this person? What was his life in Roman Britain like? And what could they have done to receive so harsh a punishment?

Wed 1st 9pm (3-2)

Sun 5th 10pm (3-2)

Wed 1st 8pm (3-1)

Thu 2nd 3pm (3-1)

Great Performances

Making Shakespeare: The First Folio

Celebrate the 400th anniversary of Shakespeare's First Folio, which saved 18 plays from being lost. The First Folio is the first collected edition of William Shakespeare's plays, collated and published in 1623, seven years after his death.

About half of Shakespeare's plays had never previously appeared in print, including *As You Like It*, *Twelfth Night*, *Measure for Measure*, *Julius Caesar*, *Macbeth*, *The Tempest*, and many more. It is this fact that makes the First Folio so important; without it, these plays might have been lost forever.

Shakespeare wrote around 37 plays, 36 of which are contained in the First Folio. The text was collated by two of Shakespeare's fellow actors and friends, John Heminge and Henry Condell, who edited it and supervised the printing. Its title is *Mr. William Shakespeare's Comedies, Histories & Tragedies*. It was Heminge and Condell who grouped his plays into those categories—comedies, histories, and tragedies—for the first time.

The title page of the First Folio includes an original portrait of Shakespeare, engraved by the artist Martin Droeshout. The Droeshout engraving is one of very few portraits of Shakespeare that are considered authentic; it was approved by those who worked on the First Folio and had known Shakespeare.

It is estimated that around 750 First Folios were printed, of which 233 are currently known to survive worldwide. The British Library owns five.

Fri 17th 9pm (3-2)

Sun 19th 5pm (3-2)

Sat 18th 7pm (3-1)



Message in a Bottle

Great Performances presents "Message in a Bottle," featuring the hits of 17-time Grammy-winning artist Sting with choreography by three-time Olivier Award nominee Kate Prince. The production from London's Sadler's Wells Theatre tells the story of a family forced to leave their homeland and embark on a perilous journey to freedom.

With musical arrangements by Alex Lacamoire (Broadway's "Hamilton") and a mix of dance styles, the production relays a quest for humanity and hope.

Recorded in August 2022, the show features Sting's chart-topping hits including "Every Breath You Take," "Roxanne," "Walking On The Moon" and more.

Fri 3rd 9pm (3-2)

Sun 5th 5:30pm (3-2)

Sat 4th 7pm (3-1)

