

Q2•3

Program Guide KENW-TV/FM
Eastern New Mexico University
August 2022

Call of the Ancient Mariner



When to watch from *A to Z* Channel 3-2 – August 2022

Amanpour and Company – Tuesdays–Thursdays, 11:00 p.m.
America's Heartland – Saturdays, 6:30 p.m. (except 13th, 20th)
America's Test Kitchen – Saturdays, 8:00 a.m.; Tuesdays, 11:00 a.m.
Antiques Roadshow –
 Mondays, 7:00 p.m. (except 15th)/11:00 p.m.; Sundays, 7:00 a.m.
Ask This Old House – Saturdays, 4:00 p.m.
Austin City Limits –
 Saturdays, 9:00 p.m. (except 13th, 20th); 12:00 midnight
BBC World News – Weekdays, 6:30 a.m.
BBC World News America – Weekdays, 5:30 p.m.
Body Electric – Weekdays, 5:30 a.m.
Christopher Kimball's Milk Street – Saturdays, 8:30 a.m.;
 Tuesdays, 5:00 p.m.
Classic Arts Showcase – Sundays–Saturdays, 1:00 a.m.–5:00 a.m.
Classic Gospel – Sundays, 8:00 a.m./4:00 p.m.
Classical Stretch – Weekdays, 6:00 a.m.
Closer to Truth – Sundays, 1:30 p.m. (except 14th, 21st)
Consuelo Mack WealthTrack – Fridays, 7:30 p.m.
Cook's Country – Saturdays, 7:00 a.m.; Mondays, 11:00 a.m.
Creative Living – Tuesdays/Thursdays, 12:00 noon;
 Saturdays, 2:00 p.m.; Tuesdays, 9:30 p.m. (except 16th, 30th)
Firing Line – Fridays, 8:30 p.m. (except 19th)
Fons & Porter's Love of Quilting – Saturdays, 1:30 p.m.;
 Wednesdays, 12:30 p.m.
Frontline – Tuesdays, 10:00 p.m.; Thursdays, 7:00 p.m.
 "Ukraine: Life Under Russia's Attack" – 2nd, 4th
 "Afghanistan Undercover" – 9th, 11th
 "Supreme Revenge: Battle for the Court" – 23rd, 25th
Garden Smart – Saturdays, 10:30 a.m.
Gzero World – Mondays, 4:30 p.m.
It's Sew Easy – Saturdays, 5:30 p.m.; Tuesdays, 12:30 p.m.
Jazzy Vegetarian – Saturdays, 2:30 p.m.;
 Wednesdays, 4:30 p.m.
Journeys in Japan – Thursdays, 4:30 p.m.
Joy of Music – Sundays, 9:00 a.m.
Joy of Painting – Saturdays, 11:30 a.m.
Kevin Belton's New Orleans – Tuesdays, 4:30 p.m.
Knit & Crochet Now – Tuesdays, 11:30 a.m.; Saturdays, 3:00 p.m.
Lawrence Welk – Saturdays, 7:00 p.m. (except 13th, 20th)
Make It Artsy – Mondays, 12:30 p.m.
Market to Market – Fridays, 7:00 p.m.
Masterpiece –
 "Grantchester," Season 7 (6 Pts.) –
 Sundays, 8:00 p.m. (ends 14th);
 Fridays, 10:00 p.m. (ends 19th)
 "Guilt," Season 2 (4 Pts.) –
 Sundays, 28th & Sept. 4th, 8:00 p.m./9:00 p.m.
 (2 episodes back-to-back each week)
Motorweek – Saturdays, 9:30 a.m.
Music & the Spoken Word – Sundays, 9:30 a.m.
Nature – Wednesdays, 7:00 p.m.; Saturdays, 11:00 p.m.
 "Dogs in the Land of Lions" – 10th (W), 13th (Sa)
 "The Bat Man of Mexico" – 24th (W), 27th (Sa)
 "Cuba's Wild Revolution" – 31st (W)
New Mexico In Focus – Sundays, 11:00 a.m. (except 14th, 21st)
Nova – Wednesdays, 8:00 p.m.; Saturdays, 10:00 p.m.
 "Universe Revealed: Black Holes" – 3rd (W), 6th (Sa)
 "Universe Revealed: Big Bang" – 10th (W), 13th (Sa)
 "Eagle Power" – 20th (Sa) only
 "Operation Lighthouse Rescue" – 24th (W), 27th (Sa)
 "A to Z The First Alphabet" – 31st (W)
Painting and Travel – Sundays, 6:00 a.m.
Painting with Wilson Bickford – Fridays, 12:30 p.m.;
 Saturdays, 12:00 noon
Paint This with Jerry Yarnell – Saturdays, 11:00 a.m.
Pati's Mexican Table – Mondays, 11:30 a.m.;
 Sundays, 12:00 noon (except 14th, 21st)
PBS NewsHour – Weekdays, 6:00 p.m./12:00 midnight

A to Z listings for 3-1 are on pages 18 & 19

Quilt in a Day – Saturdays, 12:30 p.m.
Quilting Arts – Saturdays, 1:00 p.m.
Red Green Show – Thursdays, 9:30 p.m. (except 18th);
 Saturdays, 8:30 p.m. (except 13th, 20th)
Report from Santa Fe – Saturdays, 6:00 p.m.
Second Opinion – Sundays, 6:30 a.m./3:30 p.m.;
 Wednesdays, 10:00 p.m.
Sewing with Nancy – Saturdays, 5:00 p.m.
Sit and Be Fit – Mondays/Wednesdays/Fridays, 12:00 noon
Song of the Mountains – Thursdays, 8:00 p.m. (except 18th)
Star Gazers – Wednesdays, 10:57 p.m.;
 Saturdays, 10:57 a.m./9:57 p.m.
 Sundays 2:57 p.m./10:57 p.m.; Mondays 10:57 p.m.
This Old House – Saturdays, 3:30 p.m.; Wednesdays, 10:30 p.m.
Ultimate Guide to Fly Fishing – Wednesdays, 11:00 a.m.
Wai Lana Yoga – Weekdays, 5:00 a.m.
Washington Week – Fridays, 8:00 p.m.; Mondays, 5:00 p.m.
Welcome to My Studio – Thursdays, 12:30 p.m.;
 Saturdays, 4:30 p.m.
You Should Know – Sundays, 5:00 p.m.;
 Tuesdays, 9:00 p.m. (except 16th, 30th)

Special Programs

60s Pop, Rock & Soul (2 Hrs.) – Sunday, 14th, 6:00 p.m.
Aging Backwards 3 – Sunday, 14th, 11:00 a.m.
All Creatures Great and Small: The Next Chapter –
 Friday, 19th, 8:30 p.m.; Sunday, 21st, 7:00 p.m.
American Experience –
 "The Murder of Emmett Till" – Tuesday, 23rd, 8:00 p.m.
 "Fatal Flood" – Wednesday, 24th, 9:00 p.m.
 "Surviving the Dust Bowl" – Wednesday, 31st, 9:00 p.m.
America Outdoors (6 Pts.) – Tuesdays, 8:00 p.m. (ends 9th)
America's Forests (6 Pts.) – Sundays, 1:00 p.m. (ends 7th)
Ancient Remedies with Dr. Josh Axe – Sunday, 14th, 1:30 p.m.
Beauty on the Wing: Life Story of the Monarch Butterfly –
 Sunday, 7th, 7:00 p.m.
Becoming Trauma Responsive – Sunday, 28th, 2:00 p.m.;
 Tuesday, 30th, 10:00 p.m.
Béla Fleck: My Bluegrass Heart – Monday, 15th, 8:30 p.m.
Boleyns: A Scandalous Family (3 Pts.) –
 Sundays, 7:00 p.m./10:00 p.m. (begins 28th)
Broadchurch 1 (8 Pts.) – Sundays, 6:00 p.m. (ends 7th)
Broadchurch 2 (8 Pts.) – Sundays, 6:00 p.m. (begins 28th)
Call of the Ancient Mariner – Sunday, 7th, 2:00 p.m.;
 Tuesday, 16th, 10:00 p.m.
Chris Botti & The Dallas Symphony – Tuesday, 16th, 7:00 p.m.
COBRA: Cyberwar (8 Pts.) – Sundays, 9:00 p.m. (ends 14th);
 Fridays, 11:00 p.m. (11:30 p.m. on 12th, ends 19th)
Coldplay: Live in São Paulo (2 Hrs.) – Saturday, 20th, 8:00 p.m.
Doo Wop, Pop and Soul Generations (2-1/2 Hrs.) –
 Saturday, 13th, 6:30 p.m.; Sunday, 21st, 11:00 a.m.
Epic Trails (7 Pts.) –
 Mondays, 10:00 p.m. (except 22nd, 29th)
Expedition with Steve Backshall II (6 Pts.) –
 Wednesdays, 9:00 p.m. (ends 10th)
Family Plot: Gardening in the Mid-South –
 Saturdays, 10:00 a.m.
Farmer and the Foodie – Saturdays, 7:30 a.m.
Finding Your Roots – Tuesdays, 7:00 p.m. (except 16th);
 Sundays, 10:00 a.m./11:00 p.m.
Frankie Valli & The Four Seasons: A Life on Stage –
 Sunday, 21st, 8:30 p.m.
Freedom Songs: The Music of the Civil Rights Movement –
 Sunday, 21st, 5:30 p.m.
Goes Wrong Show (12 Pts.) – Thursday, 9:00 p.m. (except 18th)
Great American Recipe (8 Pts.) – Fridays, 9:00 p.m. (ends 12th)
Great Performances "Vienna Philharmonic Summer Night Concert 2022" – Friday, 26th, 9:00 p.m.



Q2.3 Program Guide

THE MAGAZINE FOR THE FRIENDS OF PUBLIC BROADCASTING – AUGUST 2022

Q2-3 Program Guide is published each month by the Broadcast Center, a non-profit public service division of Eastern New Mexico University.

Q2-3 Program Guide (Cue to 3) is available to friends contributing \$35 per year or more to the support of public broadcasting. Senior Citizen and Student memberships are available for \$25. All contributions are tax deductible. Donations should be made payable to Friends of **KENW-TV** or to Friends of **KENW-FM** or **KMTH-FM**.

KENW-TV digital transmitters are located in: Artesia; Carlsbad; Ft. Sumner; Hobbs; Portales; Clovis; Roswell; Tucumcari; Ruidoso; Mescalero

KENW-FM, 89.5 MHz, Portales; **KMTH-FM**, 98.7 MHz, Maljamar; **KENM-FM**, 88.9 MHz, Tucumcari; NM; **KENU-FM**, 88.5 MHz, Des Moines, NM; **KENG-FM**, 88.5 MHz; Ruidoso, NM; **KENE-FM**, 88.1 MHz, Raton, and FM translators in:
Apache Springs - 90.9 MHz Las Vegas - 88.1 MHz
Clayton - 93.5 MHz Roswell - 91.1 MHz
Des Moines - 106.1 MHz Wagon Mound - 92.1 MHz
Ft. Sumner - 91.7 MHz

Telephone: Cannon A.F.B., Clovis, Portales, and Roosevelt County, call (575) 562-2112. Others, toll-free 1-888-FOR-KENW (367-5369).

Fax: (575) 562-2590

Mailing Address:

KENW-TV/FM
52 Broadcast Center, ENMU
1500 South Avenue K
Portales, NM 88130

Web site: www.kenw.org

E-Mail: kenwtv@enmu.edu
kenwfm@enmu.edu

Q2.3 Program Guide Staff

Editor: **Linda Stefanovic**
Editorial Assistant: **Vickie Brisco**
Program Log Descriptions: **Evelyn Ledbetter**

**We always welcome your comments and/or suggestions:
Toll-free 1-888-FOR-KENW (367-5369)**

KENW-FM STAFF

Development Director, FM
Desirée Markham
Operations Director, FM
Shannon Hearn
Audio Engineer
Mickey Morgan
Administrative Assistant
Suzanne West

ENMU BOARD OF REGENTS

President
Mr. Lance Pyle
Vice President
Mr. Phillip Bustos
Secretary / Treasurer
Ms. Chandler Head
Member
Ms. Trish Ruiz
Member
Dr. Dan Patterson

EASTERN NEW MEXICO UNIV.

President/System Chancellor
Dr. Patrice Caldwell
Vice President for Academic Affairs
Dr. Jamie Laurenz
Vice President for Academic Support
Mr. Clark Elswick
Interim Chief Financial Officer
Mr. Tony Major
Vice President for Student Affairs
Dr. Jeffrey Long

KENW-TV STAFF

Director of Programming
Sean Moore
Director of Operations
Justin Robertson
*Programming/
Operations Assistant*
Kim Choate
Master Control Operator, TV
David Asplund
Myrah Taylor
Administrative Assistants
Vickie Brisco
Evelyn Ledbetter

*Development/Promotion
Director*
Rena Garrett
Producer/Directors, TV
Allan Crawford
James Wygal
*Producer/Director, TV
Production/Community
Services Associate*
Don Criss
Programming Associate
Linda Stefanovic

BROADCAST CENTER STUDENT STAFF EMPLOYEES

Scott Hause
Ayeisha Martinez

BROADCAST CENTER STAFF

Director of Broadcasting
Duane W. Ryan
Accountant
Carla Benavidez
Business Associate
Laura Thompson
Director of Engineering
Porfirio Delgado
Engineers
Michael Chandler
Jason Murphy
Lawrence Thompson



Eastern New Mexico University is an affirmative action and equal opportunity employer. The University does not discriminate on the basis of race, color, national origin, sex, or handicap in its programs, activities, or employment. Persons seeking additional information about the University's nondiscrimination policy should contact the Vice President of Planning & Analysis, ENMU, Station #2, Portales, NM 88130.

Green Planet (5 Pts.) – Wednesdays, 7:00 p.m. (ends 3rd);
Saturdays, 11:00 p.m. (ends 6th)

Home Diagnosis (13 Pts.) – Saturdays, 6:30 a.m. (ends 27th);
Wednesdays, 11:30 a.m.

Innovations in Medicine – Wednesdays, 5:00 p.m.

In the Footsteps of ... (4 Pts.) – Mondays, 8:00 p.m. (ends 1st)

James Taylor: One Man Band – Saturday, 20th, 6:30 p.m.

John Williams: The Berlin Concert – Wednesday, 17th, 8:30 p.m.

Kitchen Queens: New Orleans – Thursdays, 11:30 a.m.

Last of the Breed – Monday, 15th, 7:00 p.m.

Life on the Line (5 Pts.) – Thursdays, 5:00 p.m. (ends 18th)

Medical Stories (5 Pts.) – Sundays, 3:00 p.m. (begins 7th);
Thursdays, 5:00 p.m. (begins 25th)

Nitty Gritty Dirt Band – Thursday, 18th, 7:00 p.m.

On Broadway – Tuesday, 16th, 8:30 p.m.; Sunday, 21st, 1:30 p.m.

Patrizio Buanne: Celebration! – Wednesday, 17th, 7:00 p.m.

Playas: The land of Little Lakes – Sunday, 28th, 1:00 p.m.

POV –

“**He’s My Brother**” – Monday, 1st, 9:00 p.m.

“**President**” (Zimbabwe, 2 Hrs.) – Monday, 8th, 8:00 p.m.

“**Through the Night**” – Monday, 22nd, 9:00 p.m.

“**Faya Dayi**” (2 Hrs.) – Monday, 29th, 9:00 p.m.

Rick Steves’ European Travel Tips – Sunday, 14th, 12:00 noon

Rise of the Bolsonaros (2 Hrs.) – Tuesday, 30th, 8:00 p.m.

Roadfood (13 Pts.) – Fridays, 5:00 p.m.

Roy Orbison Forever – Thursday, 18th, 8:30 p.m.

Sara’s Weeknight Meals (10 Pts.) – Saturdays, 9:00 a.m.

Steven Raichlen’s Project Fire IV – Saturdays, 6:00 a.m.;

Thursdays, 11:00 a.m.

Texas Parks and Wildlife – Sundays, 12:30 p.m. (except 14th, 21st);
Mondays, 10:30 p.m.

Water of Life – Friday, 26th, 10:30 p.m.

Wild Travels (6 Pts.) – Sundays, 5:30 p.m. (except 21st)

Wild Weather – Saturday, 20th, 11:00 p.m.

Woodsongs – Thursdays, 10:00 p.m.

World’s Greatest Cruises (10 Pts.) – Fridays, 4:30 p.m. (ends 26th);
Saturdays, 8:00 p.m. (except 13th, 20th)

Write Around the World with Richard E. Grant (3 Pts.) –

Sundays, 10:00 p.m. (begins 7th); Mondays, 8:00 p.m. (begins 22nd);

Yellowstone Symphony – Saturday, 13th, 9:00 p.m.

RISE OF THE BOLSONAROS

The Amazon is on fire. The lungs of our planet are being suffocated and its indigenous people annihilated. The world is watching, powerless, as our last great rainforest is felled and its rich resources plundered. If we continue like this for the next decade, the Amazon's entire ecosystem will collapse. The clock has always been ticking with the Amazon, but someone has just pressed fast forward.

Why would a country wantonly speed itself and the world towards an environmental apocalypse? The answer is simple: because one family have made them believe it is the right thing for Brazil to do.....meet the Bolsonaros.



The Bolsonaros are the world's newest political dynasty and for many in and outside of Brazil they are extremely dangerous. The two-hour **Rise of the Bolsonaros** unpicks their meteoric rise to power and the scandals that accompanied it.

Jair Bolsonaro was elected the 38th president of Brazil on October 28, 2018.

Rise of the Bolsonaros will be broadcast on 3-2 Tuesday, the 30th at 8:00 p.m. It will air on 3-1 Friday, September 2nd at 9:00 p.m.

The Boleyns: A Scandalous Family

When Anne Boleyn, the charismatic daughter of an English courtier, caught the eye of Tudor King Henry VIII in the mid-1520s, few could have foreseen just how far she would rise—and, eventually, fall.

Crowned queen in 1533, Anne succeeded in ousting her predecessor, Catherine of Aragon, from the throne, but just three years later, she was dead.

The Boleyns: A Scandalous Family, a three-part series, charts the rise and fall of the Boleyns, told for the first time from their unique perspective using original 16th century sources. It is a thrilling story of love, sex, obsession and betrayal played out against the backdrop of the Tudor court rife with gossip, rivalries and intrigue.



This is an intimate look at a family who did what no other Tudor family had done before them—changed the fate of a nation for the promise of a crown.

The Boleyns: A Scandalous Family airs on 3-2 Sundays at 7:00 p.m./10:00 p.m. beginning the 28th. It airs on 3-1 Sundays at 6:00 p.m. beginning the 28th and Mondays at 12:00 noon beginning the 29th.

MASTERPIECE™

GUILT, Season 2

Season 1 of “Guilt,” a dark comic drama on **Masterpiece**, was a huge hit with viewers and critics alike when it aired in 2019. The four-part series followed Max McCall (Mark Bonnar) and his brother Jake (Jamie Sives) in the wake of a life-changing moment: after accidentally running down and killing an old man on their way home from a wedding, they decided to cover up their crime.



Unfortunately, for the brothers, there were witnesses. The show's twist ending saw Max carted off to jail (not for the crime, but the cover-up).

As season 2 of “Guilt” begins, two gunshots ring out in an Edinburgh cellar. Across town, disgraced lawyer Max McCall is released from prison. Those two events gradually come together as we watch Max try to rebuild his life in the midst of shocking new developments.

“Guilt 2” on **Masterpiece** airs on 3-2 Sundays, the 28th and September 4th at 8:00 p.m./9:00 p.m. On 3-1 it airs Sundays, the 28th and September 4th at 7:00 p.m./8:00 p.m. and repeats Mondays at 1:00 p.m./2:00 p.m. (two episodes air back-to-back each day).

Write Around the World

with **Richard E. Grant**



In part two of **WRITE AROUND THE WORLD**, Richard E. Grant visits the Cévennes mountains in southern France, the inspiration for Robert Louis Stevenson's *Travels With a Donkey in the Cévennes*.

In the three-part series, **Write Around the World with Richard E. Grant**, the actor (*Downton Abbey*), travels in the footsteps of notable authors whose work has been inspired by the culture, cities and landscapes of southern France, southern Italy and southern Spain. Grant not only learns about the lives of these great authors, but also experiences many of the places immortalized in the literary classics they created.

In part one, Grant journeys to southern Italy, visiting Naples, Pompeii, Positano and Matera. Key passages include works by Charles Dickens (*Pictures From Italy*), Elena Ferrante (*My Brilliant Friend*), Elizabeth Gilbert (*Eat, Pray, Love*), Patricia Highsmith (*The Talented Mr. Ripley*) and Carlo Levi (*Christ Stopped at Eboli*).

Then, Grant journeys to southern France, visiting the Cévennes mountains, Marseille, and

Juan-les-Pins on the French Riviera. He references key passages from books by Alexandre Dumas (*The Count of Monte Cristo*), F. Scott Fitzgerald (*Tender is the Night*), Patrick Süskind (*Perfume: The Story of a Murderer*), and others.

Finally, Grant travels to Andalusia, visiting Granada, the Alpujarras, the Taja Gorge, Almuñécar and Marbella in southern Spain, where he explores works by one of Spain's most celebrated figures, the poet and playwright Federico García Lorca, as well as Ernest Hemingway (*Death in the Afternoon*) and (*For Whom the Bell Tolls*).

Write Around the World with Richard E. Grant airs on 3-2 Sundays at 10:00 p.m. beginning the 7th and Mondays at 8:00 p.m. beginning the 22nd. It can be seen on 3-1 Sundays at 10:00 p.m. beginning the 21st and Tuesdays at 8:00 p.m. beginning the 23rd.

Fall Festival - August 13th-21st

Doo Wop, Pop and Soul Generations

The premiere of **Doo Wop, Pop and Soul Generations** celebrates the legacies of the great artists and songs of the late 1950s and early 60s following the birth of rock and roll and the explosion of rhythm and blues on the radio. This musical special introduces many original groups as well as the next generation of younger singers and groups who carry on the tradition by channeling the doo wop, pop and soul sounds of the past.

"The 50s and 60s oldies genre, in particular, is in danger of leaving us for good unless a new generation is found to bring the music forward," said TJ Lubinsky, executive producer.

The 2-1/2 hour special features performances of "Unchained Melody," "Put Your Head on My Shoulder," "Sugar Pie, Honey Bunch," "Dream Lover," "Baby You Really Got a Hold on Me," and many other oldies but goodies.

Doo Wop, Pop and Soul Generations can be seen on 3-2 Saturday, the 13th at 6:30 p.m. and Sunday, the 21st at 11:00 a.m. Enjoy it on 3-1 Sunday, the 14th at 11:00 a.m. and Saturday, the 20th at 6:00 p.m.



Coldplay: Live in São Paulo

Filmed over two nights at Allianz Parque in São Paulo, Brazil, the stadium-filling, Grammy Award-winning, platinum-selling Coldplay are captured live during their A Head Full of Dreams tour. Featuring a one-of-a-kind laser show and awe-striking pyrotechnics, the tour saw the band perform to over five million fans across five continents.

Performances include "A Head Full of Dreams," "Adventure of a Lifetime," "Hymn for the Weekend," "Up & Up" and "Everglow," as well as earlier hits.

Coldplay: Live in São Paulo can be seen on 3-2 Saturday, the 20th at 8:00 p.m. It airs on 3-1 Tuesday, the 16th at 7:00 p.m.



On Broadway

On Broadway shows how Broadway came back from the brink, thanks to innovative work, new attention to inclusion and the sometimes uneasy balance between art and commerce.

Interviews with legends of the stage and screen—including Hugh Jackman (above), Helen Mirren (above), Christine Baranski, August Wilson, James Corden, Alec Baldwin, John Lithgow, and Viola Davis—take viewers behind the scenes of Broadway's most groundbreaking and beloved shows, from *A Chorus Line* to *Hamilton*.

Archival clips of iconic performances by Lin-Manuel Miranda, Patti LuPone, Bernadette Peters, James Earl Jones and Mandy Patinkin punctuate this hurly-burly ride through the main street of American show business.

On Broadway airs on 3-2 Tuesday, the 16th at 8:30 p.m. and Sunday, the 21st at 1:30 p.m. Watch it on 3-1 Wednesday, the 17th at 7:00 p.m.

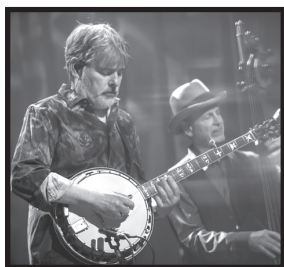
Béla Fleck: My Bluegrass Heart

Join Béla Fleck and an all-star lineup of the most acclaimed artists in bluegrass at their soldout show at the Ryman Auditorium. Performing from his Grammy-winning album, "My Bluegrass Heart," this show is a "can't miss" moment in bluegrass and offers a one-time chance to see all the artists from the album together on one stage.

Over the last four decades, Béla Fleck has boldly gone where no banjo player has gone before, earning 15 Grammy Awards in nine different genres, including Country, Pop, Jazz, Instrumental, Classical and World Music. But

his roots are in bluegrass, and that's where he returns with his first bluegrass project in 24 years.

Béla Fleck: My Bluegrass Heart airs on 3-2 Monday, the 15th at 8:30 p.m. Watch it on 3-1 Thursday, the 18th at 7:00 p.m.



Frankie Valli & The Four Seasons

In the 1960s and early 1970s, Frankie Valli and The Four Seasons recorded hit after hit and sold over 100 million albums featuring unforgettable tunes like "Walk Like a Man," "Big Girls Don't Cry," "Rag Doll," "Can't Take My Eyes Off You" and "Grease." The 2005 musical *Jersey Boys*, detailing those remarkable years, ran on Broadway for 12 years and won four Tony Awards.

This year is the 60th anniversary of the group's first #1 hit, "Sherry," and Frankie Valli and The Four Seasons are still touring throughout the U.S. and abroad to packed houses of thrilled fans from multiple generations. This solid

gold PBS special was taped in April 2022. **Frankie Valli & The Four Seasons: A Life on Stage** airs on 3-2 Sunday the 21st at 8:30 p.m. Enjoy it on 3-1 Saturday, the 20th at 8:30 p.m.



James Taylor: One Man Band

Nearly 40 years after the release of his first single, beloved singer-songwriter James Taylor continues to captivate legions of fans with his characteristic, folk-inspired sound. **James Taylor: One Man Band** features such classic favorites as "Carolina in My Mind," "You've Got a Friend," "Shower the People," and "Fire and Rain," recorded at the magnificently restored Colonial Theatre in the heart of the Berkshires.

The concert performance is interspersed with personal anecdotes, touching and witty reflections, and never-before-seen home movies and photographs from Taylor's personal archives.

James Taylor: One Man Band will be broadcast on 3-2 Saturday, the 20th at 6:30 p.m. It can be seen on 3-1 Saturday, the 13th at 8:30 p.m. and Sunday, the 21st at 5:30 p.m.



—KENW-TV SCHEDULES 3-1 (HD), 3-2 (HD) AND 3-3 (SD)—

KENW-TV considers Channel 3-2 to be its “main” channel and is listed below in bold. Channel 3-2 broadcasts in High Definition (HD) and can be seen by those using cable in eastern NM or by one of our translators listed on page 3. Schedule 3-1 is also a High Definition (HD) Channel and can be seen on the HD services of some cable companies, please see page 19. 3-3 is our Children’s/Encore Standard Definition Channel (SD) and 3-4 is our FNX Channel (First Nations Experience).

Those using antennas can receive all four channels in the following cities: Clovis/Portales; Hobbs/Lovington; Roswell; Artesia; Fort Sumner; Tucumcari; Carlsbad; Ruidoso; Mescalero.

KENW-TV’s 3-1 schedule (below in italics) is carried by DirecTV and Dish Network in most counties of New Mexico.

KENW-TV’s 3-3 schedule (below in italics) can only be seen over the air with an antenna.

The schedule for KENW-TV’s 3-4 FNX Channel is available at <https://fnx.org/schedule/>.

Monday 1st

7:00 3-2	Antiques Roadshow “Hotel Del Coronado,” Pt. 1
<i>3-1</i>	<i>Slavery by Another Name</i>
8:00 3-2	In the Footsteps of... “Thomas Hardy”
<i>8:30 3-1</i>	<i>Kindred Spirits: Artists Hilda Brown and Lilian Burwell</i>
9:00 3-2	POV “He’s My Brother”
<i>3-1</i>	<i>Antiques Roadshow</i>
<i>3-3</i>	<i>In Their Own Words</i>
10:00 3-2	Epic Trails “Backpacking Quebec,” Pt. 1
<i>3-1</i>	<i>Amanpour and Company</i>
<i>3-3</i>	<i>Masterpiece</i> “Grantchester,” Pt. 4
10:30 3-2	Texas Parks and Wildlife
11:00 3-2	Antiques Roadshow “Hotel Del Coronado,” Pt. 1
<i>3-1</i>	<i>PBS NewsHour</i>
<i>3-3</i>	<i>COBRA</i>
12:00 3-2	PBS NewsHour
<i>3-1</i>	<i>POV</i> “He’s My Brother”
<i>3-3</i>	<i>Craft in America</i>

Tuesday 2nd

7:00 3-2	Finding Your Roots “Italian Roots”
<i>3-1</i>	<i>Legacy List</i>
8:00 3-2	America Outdoors “Tidewater: Homecoming”
<i>3-1</i>	<i>POV</i> “He’s My Brother”
9:00 3-2	You Should Know
<i>3-1</i>	<i>Finding Your Roots</i>
<i>3-3</i>	<i>Antiques Roadshow</i>
9:30 3-2	Creative Living
10:00 3-2	Frontline “Ukraine: Life Under Russia’s Attack”
<i>3-1</i>	<i>Amanpour and Company</i>
<i>3-3</i>	<i>History Detectives</i>
11:00 3-2	Amanpour and Company
<i>3-1</i>	<i>PBS NewsHour</i>
<i>3-3</i>	<i>Green Planet</i>
12:00 3-2	PBS NewsHour
<i>3-1</i>	<i>Frontline</i> “Ukraine: Life Under Russia’s Attack”
<i>3-3</i>	<i>America’s Heartland</i>

Wednesday 3rd

7:00 3-2	Green Planet “Human Worlds”
<i>3-1</i>	<i>America Outdoors</i>
8:00 3-2	Nova “Nova Universe Revealed: Black Holes”
<i>3-1</i>	<i>Call of the Ancient Mariner</i>
9:00 3-2	Expedition “Socorro: Expedition Shark Island”
<i>3-1</i>	<i>Green Planet</i>
<i>3-3</i>	<i>America Outdoors</i>
10:00 3-2	Second Opinion “Alzheimer’s: A Public Health Crisis”
<i>3-1</i>	<i>Amanpour and Company</i>
<i>3-3</i>	<i>To Dine For</i>

10:30 3-2	This Old House “Saratoga Springs”
<i>3-3</i>	<i>Crossing South</i>
11:00 3-2	Amanpour and Company
<i>3-1</i>	<i>PBS NewsHour</i>
<i>3-3</i>	<i>Travels with Darley</i>
11:30 3-3	Rick Steves’ Europe
12:00 3-2	PBS NewsHour
<i>3-1</i>	<i>Nova</i> “Nova Universe Revealed: Black Holes”
<i>3-3</i>	<i>In the Americas</i>

Thursday 4th

7:00 3-2	Frontline “Ukraine: Life Under Russia’s Attack”
<i>3-1</i>	<i>Song of the Mountains</i>
8:00 3-2	Song of the Mountains “Blue Highway”
<i>3-1</i>	<i>Red Green Show</i>
<i>8:30 3-1</i>	<i>You Should Know</i>
9:00 3-2	Goes Wrong Show “Harper’s Locket”
<i>3-1</i>	<i>Creative Living</i>
<i>3-3</i>	<i>Expedition</i>
9:30 3-2	Red Green Show “Mr. Clean”
<i>3-1</i>	<i>World’s Greatest Cemeteries</i>
10:00 3-2	Woodsongs “Linda Gail Lewis”
<i>3-1</i>	<i>Amanpour and Company</i>
<i>3-3</i>	<i>Green Planet</i>
11:00 3-2	Amanpour and Company
<i>3-1</i>	<i>PBS NewsHour</i>
<i>3-3</i>	<i>Nova</i>
12:00 3-2	PBS NewsHour
<i>3-1</i>	<i>Slavery by Another Name</i>
<i>3-3</i>	<i>Medical Stories</i>

Friday 5th

7:00 3-2	Market to Market
<i>3-1</i>	<i>Washington Week</i>
7:30 3-2	Consuelo Mack Wealthtrack
<i>3-1</i>	<i>Firing Line with Margaret Hoover</i>
8:00 3-2	Washington Week
<i>3-1</i>	<i>Nova</i> “Nova Universe Revealed: Black Holes”
8:30 3-2	Firing Line
9:00 3-2	Great American Recipe “Family”
<i>3-1</i>	<i>Frontline</i> “Ukraine: Life Under Russia’s Attack”
<i>3-3</i>	<i>This Old House</i>
<i>9:30 3-3</i>	<i>Ask This Old House</i>
10:00 3-2	Masterpiece “Grantchester,” Pt. 4
<i>3-1</i>	<i>Amanpour and Company</i>
<i>3-3</i>	<i>American Woodshop</i>
<i>10:30 3-3</i>	<i>Woodsmith Shop</i>
11:00 3-2	COBRA , Pt. 4
<i>3-1</i>	<i>PBS NewsHour</i>
<i>3-3</i>	<i>Joy of Painting</i>
<i>11:30 3-3</i>	<i>Make It Artsy</i>
12:00 3-2	PBS NewsHour
<i>3-1</i>	<i>Hunter</i>
<i>3-3</i>	<i>Start Up</i>

Call of the Ancient Mariner

Call of the Ancient Mariner takes viewers on a fascinating exploration of sea turtles and human culture. Thousands of cultures have been captivated by this iconic creature making the turtle their totem, their deity, their inspiration for wisdom, fertility and longevity. As a result, man’s first writing was done on the back of a turtle shell, the first known coin has a sea turtle on it. The Maya based their sophisticated astronomical system on the boney plates of a turtle shell. The program documents these spellbinding historical connections and what they mean for us today and how they inform our current conservation efforts.

Sea turtles are the world’s only living dinosaur that have graced our planet for over 150 million years. Although they’ve survived ice ages and mass extinctions, their biggest test—surviving mankind—is still to be determined.

Call of the Ancient Mariner airs on 3-2 Sunday, the 7th at 2:00 p.m. and Tuesday, the 16th at 10:00 p.m. Watch it on 3-1 Wednesday, the 3rd at 8:00 p.m.

Saturday 6th

6:00 3-2	Steven Raichlen’s Project Fire
6:30 3-2	Home Diagnosis “Healing Your Homechem: Solutions”
7:00 3-2	Cook’s Country “Aloha State Favorites”
7:30 3-2	Farmer and the Foodie “New Roots”
8:00 3-2	America’s Test Kitchen “Pupusas and Yucca”
8:30 3-2	Christopher Kimball’s Milk Street “Not Your Mother’s Cake”
9:00 3-2	Sara’s Weeknight Meals “Meaty Salads”
9:30 3-2	Motorweek
10:00 3-2	Family Plot “Gardening in Miami”
10:30 3-2	Garden Smart
11:00 3-2	Paint This with Jerry Yarnell “Desert Miracle,” Pt. 1
<i>3-1</i>	<i>Kevin Belton’s Cookin’ Louisiana</i>
11:30 3-2	Joy of Painting “Twin Falls”
<i>3-1</i>	<i>Pati’s Mexican Table</i>
12:00 3-2	Painting with Wilson Bickford “Snow Glow,” Pt. 1
<i>3-1</i>	<i>This Old House</i>

- 12:30 3-2 Quilt in a Day**
"Americana Star Block"
3-1 *This Old House*
- 1:00 3-2 Quilting Arts**
"Childhood Inspiration"
3-1 *Ask This Old House*
- 1:30 3-2 Fons & Porter's Love of Quilting** "Feather Love"
3-1 *Motorweek*
- 2:00 3-2 Creative Living**
3-1 *Ask This Old House*
- 2:30 3-2 Jazzy Vegetarian** "Summer Afternoon Tea"
3-1 *Steve Raichlen's Project Fire*
- 3:00 3-2 Knit and Crochet Now**
"Mosaic Afghans"
3-1 *America's Test Kitchen*
- 3:30 3-2 This Old House**
"Saratoga Springs"
3-1 *Cook's Country*
- 4:00 3-2 Ask This Old House**
3-1 *Green Planet*
- 4:30 3-2 Welcome to My Studio**
"Mums and Fruit," Pt. 3
- 5:00 3-2 Sewing with Nancy** "Quilt with an Embroidery Machine"
3-1 *PBS NewsHour Weekend*
- 5:30 3-2 It's Sew Easy** "Paper Power"
3-1 *Report from Santa Fe*
- 6:00 3-2 Report from Santa Fe**
3-1 *Antiques Roadshow*
- 6:30 3-2 America's Heartland**
- 7:00 3-2 Lawrence Welk Show**
"Famous Resorts"
3-1 *Great American Recipe*
- 8:00 3-2 World's Greatest Cruises**
"Scandinavia and Scotland"
3-1 *One Voice: The Songs We Share*
- 8:30 3-2 Red Green Show**
"Mr. Possum Lake"
3-1 *Antiques Roadshow Recut*
- 9:00 3-2 Austin City Limits**
"Ray Wylie Hubbard"
3-1 *Goes Wrong Show*
3-3 *Lawrence Welk Show*
- 9:30 3-1 *Sound on Tap*
- 10:00 3-2 Nova** "Nova Universe Revealed: Black Holes"
3-1 *Austin City Limits*
3-3 *Classic Gospel*
- 11:00 3-2 Green Planet** "Human Worlds"
3-1 *Nova "Nova Universe Revealed: Black Holes"*
3-3 *Woodsongs*
- 12:00 3-2 Austin City Limits**
"Ray Wylie Hubbard"
3-1 *Green Planet*
3-3 *Song of the Mountains*

Sunday 7th

- 6:00 3-2 Painting & Travel**
"The Steam Tractor"
- 6:30 3-2 Second Opinion** "Anxiety"
- 7:00 3-2 Antiques Roadshow**
- 8:00 3-2 Classic Gospel**
- 9:00 3-2 Joy of Music**
- 9:30 3-2 Music and the Spoken Word**
- 10:00 3-2 Finding Your Roots**
- 11:00 3-2 New Mexico in Focus**
3-1 *Washington Week*
- 11:30 3-1 *Healthy Minds*
- 12:00 3-2 Pati's Mexican Table** "El Chepe, Railway to the Past"
3-1 *New Mexico in Focus*
- 12:30 3-2 Texas Parks and Wildlife**
- 1:00 3-2 America's Forests** "California"
3-1 *Consuelo Mack Wealthtrack*



Broadchurch Season 2 Premiers

The second season of **Broadchurch**, also an 8-part series, is about digging: digging into the past, and, quite literally, digging up a body. The body? Danny Latimer's for a new autopsy. But metaphorical bodies are also being unearthed as the British mystery returns. When season 1 came to a close, it seemed certain that Joe Miller was the culprit, but now he has pleaded not guilty, reducing the town of Broadchurch to shambles again.

"Knowing the truth and getting justice isn't the same thing," Queen's Counsel Barrister Jocelyn Knight (Charlotte Rampling) tells the Latimers (shown above). And in this second season, Chris Chibnall apparently plans to rip away what truth we thought we learned in season 1.

Broadchurch 2 can be seen on 3-2 Sundays at 6:00 p.m. beginning the 28th (season 1 ends the 7th). On 3-1, season 2 airs Sundays at 11:00 p.m. beginning the 28th (season 1 ends the 7th).

- 1:30 3-2 Closer to Truth** "Toward a Science of Consciousness"
3-1 *Market to Market*
- 2:00 3-2 Call of the Ancient Mariner**
3-1 *P. Allen Smith's Garden Home*
- 2:30 3-1 *J. Schwanke's Life in Bloom*
- 3:00 3-2 Medical Stories**
3-1 *Great American Recipe*
- 3:30 3-2 Second Opinion** "Racial Disparities in Health"
- 4:00 3-2 Classic Gospel**
"David Phelps: Hymnal"
3-1 *Nova "Nova Universe Revealed: Black Holes"*
- 5:00 3-2 You Should Know**
3-1 *PBS News Weekend*
- 5:30 3-2 Wild Travels**
3-1 *By the River*
- 6:00 3-2 Broadchurch, Pt. 8**
3-1 *In Their Own Words*
- 7:00 3-2 Beauty on the Wing: Life Story of the Monarch Butterfly**
3-1 *Masterpiece "Grantchester," Pt. 5*
- 8:00 3-2 Masterpiece** "Grantchester," Pt. 5
3-1 *COBRA*
- 9:00 3-2 COBRA, Pt. 5**
3-1 *Professor T*
3-3 *Daytripper*
- 9:30 3-3 *America's Heartland*

- 10:00 3-2 Write Around the World**
"Southern France," Pt. 1
3-1 *Real Rail Adventures: Swiss International Hubs*
3-3 *This Old House*
- 10:30 3-3 *Ask This Old House*
- 11:00 3-2 Finding Your Roots**
"Italian Roots"
3-1 *Broadchurch, Pt. 8*
3-3 *Motorweek*
- 11:30 3-3 *Texas Parks and Wildlife*
- 12:00 3-2 Nova** "Nova Universe Revealed: Black Holes"
3-1 *Masterpiece "Grantchester," Pt. 5*
3-3 *Green Planet*

Monday 8th

- 7:00 3-2 Antiques Roadshow**
"Hotel Del Coronado," Pt. 3
3-1 *Leisureama*
- 8:00 3-2 POV** "President"
3-1 *Alabama Black Belt Blues*
- 9:00 3-1 *Antiques Roadshow*
3-3 *In Their Own Words*
- 10:00 3-2 Epic Trails** "Backpacking Quebec," Pt. 2
3-1 *Amanpour and Company*
3-3 *Masterpiece "Grantchester," Pt. 5*
- 10:30 3-2 Texas Parks and Wildlife**
- 11:00 3-2 Antiques Roadshow**
"Hotel Del Coronado," Pt. 2
3-1 *PBS NewsHour*
3-3 *COBRA*
- 12:00 3-2 PBS NewsHour**
3-1 *POV "President"*
3-3 *Craft in America*

Tuesday 9th

- 7:00 3-2 Finding Your Roots**
"The Eye of the Beholder"
3-1 *Legacy List*
- 8:00 3-2 America Outdoors** "Minnesota: A Better World"
3-1 *Belle Vie*
- 9:00 3-2 You Should Know**
3-1 *Finding Your Roots*
3-3 *Antiques Roadshow*
- 9:30 3-2 Creative Living**
- 10:00 3-2 Frontline**
"Afghanistan Undercover"
3-1 *Amanpour and Company*
3-3 *History Detectives*
- 11:00 3-2 Amanpour and Company**
3-1 *PBS NewsHour*
3-3 *Green Planet*
- 12:00 3-2 PBS NewsHour**
3-1 *Frontline*
"Afghanistan Undercover"
3-3 *America's Heartland*

Wednesday 10th

- 7:00 3-2 Nature** "Dogs in the Land of Lions"
3-1 *America Outdoors*
- 8:00 3-2 Nova** "Nova Universe Revealed: Big Bang"
3-1 *Hog Haven*
- 9:00 3-2 Expedition** "Expedition Unseen"
3-1 *Nature "Dogs in the Land of Lions"*
3-3 *America Outdoors*
- 10:00 3-2 Second Opinion**
"Millennial Health II"
3-1 *Amanpour and Company*
3-3 *To Dine For*
- 10:30 3-2 This Old House** "Saratoga Springs: Pantry Problems"
3-3 *Crossing South*

- 11:00 3-2 **Amanpour and Company**
 3-1 *PBS NewsHour*
 3-3 *Travels with Darley*
 11:30 3-3 *Rick Steves' Europe*
 12:00 3-2 **PBS NewsHour**
 3-1 *Nova "Nova Universe Revealed: Big Bang"*
 3-3 *In the Americas*

Thursday 11th

- 7:00 3-2 **Frontline**
 "Afghanistan Undercover"
 3-1 *Song of the Mountains*
 8:00 3-2 **Song of the Mountains**
 "Joe Hott/Grain Thief"
 3-1 *Red Green Show "No Tell Boatel"*
 8:30 3-1 *You Should Know*
 9:00 3-2 **Goes Wrong Show**
 "The Spirit of Christmas"
 3-1 *Creative Living*
 3-3 *Expedition*
 9:30 3-2 **Red Green Show "No Tell Boatel"**
 3-1 *World's Greatest Cemeteries*
 10:00 3-2 **Woodsongs "Jimmie Vaughan"**
 3-1 *Amanpour and Company*
 3-3 *Nature*
 11:00 3-2 **Amanpour and Company**
 3-1 *PBS NewsHour*
 3-3 *Nova*
 12:00 3-2 **PBS NewsHour**
 3-1 *Alabama Black Belt Blues*
 3-3 *Medical Stories*

Friday 12th

- 7:00 3-2 **Market to Market**
 3-1 *Washington Week*
 7:30 3-2 **Consuelo Mack Wealthtrack**
 3-1 *Firing Line with Margaret Hoover*
 8:00 3-2 **Washington Week**
 3-1 *Nova "Nova Universe Revealed: Big Bang"*
 8:30 3-2 **Firing Line**
 9:00 3-2 **Great American Recipe**
 "The Finale"
 3-1 *Frontline*
 "Afghanistan Undercover"
 3-3 *This Old House*
 9:30 3-3 *Ask This Old House*
 10:00 3-1 *Amanpour and Company*
 3-3 *American Woodshop*
 10:30 3-2 **Masterpiece "Grantchester," Pt. 5**
 3-3 *Woodsmith Shop*
 11:00 3-1 *PBS NewsHour*
 3-3 *Joy of Painting*
 11:30 3-2 **COBRA, Pt. 5**
 3-3 *Make It Artsy*
 12:00 3-1 *Seaside Hotel*
 3-3 *Start Up*

Saturday 13th

- 6:00 3-2 **Steven Raichlen's Project Fire**
 "Barbeque Health Food"
 6:30 3-2 **Home Diagnosis**
 "Universe's Battery"
 7:00 3-2 **Cook's Country**
 "Chicken and Cornbread"
 7:30 3-2 **Farmer and the Foodie**
 "Urban Farming/YCAP"
 8:00 3-2 **America's Test Kitchen**
 "Unexpected Salads"
 8:30 3-2 **Christopher Kimball's Milk Street "Milk Street Menu"**
 9:00 3-2 **Sara's Weeknight Meals**
 "Key West Eats"
 9:30 3-2 **Motorweek**

- 10:00 3-2 **Family Plot: Gardening in the Mid-South "Plant Roses, Disease Resistant"**
 10:30 3-2 **Garden Smart**
 11:00 3-2 **Paint This with Jerry Yarnell**
 "Desert Miracle," Pt. 2
 3-1 *Kevin Belton's Cookin' Louisiana*
 11:30 3-2 **Joy of Painting**
 "Fisherman's Paradise"
 3-1 *Pati's Mexican Table*
 12:00 3-2 **Painting with Wilson Bickford**
 "Snow Glow," Pt. 2
 3-1 *This Old House*
 12:30 3-2 **Quilt in a Day**
 "Dora's Delight Block"
 3-1 *This Old House*
 1:00 3-2 **Quilting Arts "Embellish"**
 3-1 *Ask This Old House*
 1:30 3-2 **Fons & Porter's Love of Quilting "Feather Love II"**
 3-1 *Motorweek*
 2:00 3-2 **Creative Living**
 3-1 *Ask This Old House*
 2:30 3-2 **Jazzy Vegetarian "Gluten-Free Breakfast Menu"**
 3-1 *Steve Raichlen Project Fire*
 3:00 3-2 **Knit and Crochet Now**
 "Top-Down Beanies"
 3-1 *America's Test Kitchen*
 3:30 3-2 **This Old House "Saratoga Springs: A Legacy Restore"**
 3-1 *Cook's Country*
 4:00 3-2 **Ask This Old House**
 3-1 *Nature "Dogs in the Land of Lions"*
 5:00 3-2 **Sewing with Nancy "Quilt with an Embroidery Machine"**
 3-1 *PBS NewsHour Weekend*
 5:30 3-2 **It's Sew Easy "Change is Good"**
 3-1 *Report from Santa Fe*
 6:00 3-2 **Report from Santa Fe**
 3-1 *Antiques Roadshow*
 6:30 3-2 **Doo Wop, Pop and Soul Generations**
 3-1 *Attachments of Life*
 7:00 3-1 *Great American Recipe*
 8:30 3-1 *James Taylor: One Man Band*
 9:00 3-2 **Yellowstone Symphony**
 3-3 *Lawrence Welk Show*
 10:00 3-2 **Nova "Nova Universe Revealed: Big Bang"**
 3-1 *Austin City Limits*
 3-3 *Classic Gospel*
 11:00 3-2 **Nature "Dogs in the Land of Lions"**
 3-1 *Nova "Nova Universe Revealed: Big Bang"*
 3-3 *Woodsongs*
 12:00 3-2 **Austin City Limits "Terry Allen"**
 3-1 *Nature "Dogs in the Land of Lions"*
 3-3 *Song of the Mountains*

Sunday 14th

- 6:00 3-2 **Painting & Travel**
 "The Button Factory"
 6:30 3-2 **Second Opinion**
 "Heart Disease in Women"
 7:00 3-2 **Antiques Roadshow**
 8:00 3-2 **Classic Gospel**
 "Singing Contractors"
 9:00 3-2 **Joy of Music**
 "Music on the Danube"
 9:30 3-2 **Music and the Spoken Word**
 10:00 3-2 **Finding Your Roots**
 "The Eye of the Beholder"
 11:00 3-2 **Aging Backwards 3**
 3-1 *Doo Wop, Pop and Soul Generations*

Fall Festival **Yellowstone Symphony**

From the ethereal wonders at Mammoth Hot Springs to the grandeur of Tower Fall to its extraordinary wildlife, **Yellowstone Symphony** takes viewers on a spectacular visual journey through America's first national park. Set to classical music from some of the world's best composers, the park's magnificent scenery and wildlife are showcased as they change through the seasons. The stunning cinematography offers viewers a tourist-free look at the plentiful wildlife—elk, moose, grizzly bears, wolves and bison.



This lyrical film, without narration, blends imagery with the music of Vivaldi, Schubert, Beethoven, Mozart, Brahms, Debussy, Tchaikovsky and others.

Yellowstone Symphony airs on 3-2 Saturday, the 13th at 9:00 p.m. Enjoy it on 3-1 Tuesday, the 16th at 9:00 p.m.

- 12:00 3-2 **Rick Steves' European Travel Tips and Tricks**
 1:30 3-2 **Ancient Remedies**
 3-1 *Market to Market*
 2:00 3-1 *Easy Yoga for Arthritis*
 3:00 3-2 **Medical Stories**
 "Hopeful Persistence"
 3-1 *Great American Recipe*
 3:30 3-2 **Second Opinion "Alzheimer's: A Public Health Crisis"**
 4:00 3-2 **Classic Gospel**
 "Amazing Grace"
 3-1 *Nova "Nova Universe Revealed: Big Bang"*
 5:00 3-2 **You Should Know**
 3-1 *PBS NewsHour Weekend*
 5:30 3-2 **Wild Travels**
 3-1 *All Creatures Great and Small: The Next Chapter*
 6:00 3-2 **60s Pop, Rock & Soul**
 7:00 3-1 *Masterpiece "Grantchester," Pt. 6*
 8:00 3-2 **Masterpiece "Grantchester," Pt. 6**
 3-1 *John Williams: The Berlin Concert*
 9:00 3-2 **COBRA, Pt. 6**
 3-3 *Daytripper*
 9:30 3-1 *COBRA*
 3-3 *America's Heartland*
 10:00 3-2 **Write Around the World**
 "Southern Italy," Pt. 2
 3-3 *This Old House*
 10:30 3-1 *Schille*
 3-3 *Ask This Old House*
 11:00 3-2 **Finding Your Roots**
 "The Eye of the Beholder"
 3-1 *Rick Steves Best of the Alps*
 3-3 *Motorweek*

11:30 3-3 *Texas Parks and Wildlife*
 12:00 3-2 **Nova** "Universe Revealed:
 Big Bang"
 3-1 *Masterpiece "Grantchester," Pt. 6*
 3-3 *Nature*

Monday 15th

7:00 3-2 **Last of the Breed**
 3-1 *Roy Orbison Forever*
 8:30 3-2 **Béla Fleck: My Bluegrass Heart**
 3-1 *Nitty Gritty Dirt Band: 50 Years
 and Circlin' Back*
 9:00 3-3 *In Their Own Words*
 10:00 3-2 **Epic Trails** "Backpacking in
 Quebec," Pt. 3
 3-1 *Amanpour and Company*
 3-3 *Masterpiece "Grantchester," Pt. 6*
 10:30 3-2 **Texas Parks and Wildlife**
 11:00 3-2 **Antiques Roadshow**
"Hotel Del Coronado, Pt. 3
 3-1 *PBS NewsHour*
 3-3 *COBRA*
 12:00 3-2 **PBS NewsHour**
 3-1 *POV "Portraits and Dreams"*
 3-3 *Craft in America*

Tuesday 16th

7:00 3-2 **Chris Botti & The Dallas
 Symphony**
 3-1 *Coldplay: Live in São Paulo*
 8:30 3-2 **On Broadway**
 9:00 3-1 *Yellowstone Symphony*
 3-3 *Antiques Roadshow*
 10:00 3-2 **Call of the Ancient Mariner**
 3-1 *Amanpour and Company*
 3-3 *History Detectives*
 11:00 3-2 **Amanpour and Company**
 3-1 *PBS NewsHour*
 3-3 *Nature*
 12:00 3-2 **PBS NewsHour**
 3-1 *When Disaster Strikes*
 3-3 *America's Heartland*

Fall Festival



Rick Steves' European Travel Tips and Tricks

In **Rick Steves' European Travel Tips and Tricks**, Rick shares the essential skills for smart European travel: itinerary planning, venturing off the beaten path, packing light, and avoiding crowds (and thieves). He also offers tips on transportation, finding hotels and restaurants, and much more. Throughout the special, Rick imparts valuable lessons from a lifetime of travel so others can learn from his experience and travel smarter.

Rick Steves' European Travel Tips and Tricks can be seen on 3-2 Sunday, the 14th at 12:00 noon. Watch it on 3-1 Sunday, the 21st at 11:00 a.m.

Fall Festival

Chris Botti & The Dallas Symphony Orchestra

Jazz trumpeter and multiple Grammy Award-winner Chris Botti joins the Dallas Symphony Orchestra for an evening of jazz, pop and well-loved standards. Botti and the DSO deliver a set of music guaranteed to delight audiences.

Master trumpeter Botti has amassed a spectacular variety of honors, including multiple Gold and Platinum albums, to become the nation's largest-selling instrumental artist. His mesmerizing performances have cemented his place as one of the most brilliant and inspiring forces on the contemporary music scene.

Chris Botti & The Dallas Symphony Orchestra airs on 3-2 Tuesday, the 16th at 7:00 p.m. On 3-1 it airs Sunday, the 21st at 7:00 p.m.



Wednesday 17th

7:00 3-2 **Patrizio Buanne: Celebration!**
 3-1 *On Broadway*
 8:30 3-2 **John Williams:
 The Berlin Concert**
 3-1 *Freedom Songs: The Music of the
 Civil Rights Movement*
 9:00 3-3 *When Disaster Strikes*
 10:00 3-2 **Second Opinion**
"Conquering Obesity"
 3-1 *Amanpour and Company*
 3-3 *To Dine For*
 10:30 3-2 **This Old House** "Saratoga
 Springs: A Legacy Restore"
 3-3 *Crossing South*
 11:00 3-2 **Amanpour and Company**
 3-1 *PBS NewsHour*
 3-3 *Travels with Darley*
 11:30 3-3 *Rick Steves' Europe*
 12:00 3-2 **PBS NewsHour**
 3-1 *Nova "Eagle Power"*
 3-3 *In the Americas*

Thursday 18th

7:00 3-2 **Nitty Gritty Dirt Band: 50 Years
 and Circlin' Back**
 3-1 *Béla Fleck: My Bluegrass Heart*
 8:30 3-2 **Roy Orbison Forever**
 3-1 *Last of the Breed*
 9:00 3-3 *Hawaii: Islands of Wonder*
 10:00 3-2 **Woodsongs**
"The Quebe Sisters"
 3-1 *You Should Know*
 3-3 *Wild Weather*
 10:30 3-1 *Playas: The Land of Little Lakes*
 11:00 3-2 **Amanpour and Company**
 3-1 *PBS NewsHour*
 3-3 *Nova*
 12:00 3-2 **PBS NewsHour**
 3-1 *Women and the Vote*
 3-3 *Medical Stories*

Friday 19th

7:00 3-2 **Market to Market**
 3-1 *60s Pop, Rock & Soul*
 7:30 3-2 **Consuelo Mack Wealthtrack**
 8:00 3-2 **Washington Week**
 8:30 3-2 **All Creatures Great and Small**
 9:00 3-1 *Easy Yoga for Arthritis*
 3-3 *This Old House*
 9:30 3-3 *Ask This Old House*

10:00 3-2 **Masterpiece** "Grantchester," Pt. 6
 3-1 *Amanpour and Company*
 3-3 *American Woodshop*
 10:30 3-3 *Woodsmith Shop*
 11:00 3-2 **COBRA, Pt. 6**
 3-1 *PBS NewsHour*
 3-3 *Joy of Painting*
 11:30 3-3 *Make It Artsy*
 12:00 3-2 **PBS NewsHour**
 3-1 *Seaside Hotel*
 3-3 *Start Up*

Saturday 20th

6:00 3-2 **Steve Raichlen's Project Fire**
"Planet Steak"
 6:30 3-2 **Home Diagnosis**
"Proof: Testing the House"
 7:00 3-2 **Cook's Country**
"The Perfect Cake"
 7:30 3-2 **Farmer and the Foodie**
"Black Soil KY"
 8:00 3-2 **America's Test Kitchen**
"Elegant French Desserts"
 8:30 3-2 **Christopher Kimball's Milk
 Street** "Milk Street Holidays"
 9:00 3-2 **Sara's Weeknight Meals**
"Americas Favorite Sandwiches"
 9:30 3-2 **Motorweek**
 10:00 3-2 **Family Plot**
"Straw Bale Gardening"
 10:30 3-2 **Garden Smart** "Gardening in a
 Tropical Paradise"
 11:00 3-2 **Paint This with Jerry Yarnell**
"Desert Miracle," Pt. 3
 3-1 *Kevin Belton's Cookin' Louisiana*
 11:30 3-2 **Joy of Painting** "Two Seasons"
 3-1 *Pati's Mexican Table*
 12:00 3-2 **Painting with Wilson Bickford**
"Misty Morning Haze"
 3-1 *This Old House*
 12:30 3-2 **Quilt in a Day** "North Star Block"
 3-1 *This Old House*
 1:00 3-2 **Quilting Arts** "Piecing"
 3-1 *Ask This Old House*
 1:30 3-2 **Fons & Porter's Love of
 Quilting** "Remembered"
 3-1 *Motorweek*
 2:00 3-2 **Creative Living**
 3-1 *Ask This Old House*
 2:30 3-2 **Jazzy Vegetarian** "Sukiyaki
 Supper"
 3-1 *Steven Raichlen's Project Fire*

KENW-TV'S DAYTIME SCHEDULES

Kids' Programming, How-to's and Family Viewing

KENW-TV, Channel 3-4, Schedule for FNX available at fnx.org/schedule.

Channel 3-2

Monday through Friday

5:00 am	Wai Lana Yoga
5:30 am	Body Electric
6:00 am	Classical Stretch
6:30 am	BBC World News
7:00 am	Molly of Denali
7:30 am	Wild Kratts
8:00 am	Arthur
8:30 am	Hero Elementary
9:00 am	Donkie Hodie
9:30 am	Elinor Wonders Why
10:00 am	Curious George
10:30 am	Daniel Tiger's Neighborhood
11:00 am	Cook's Country (M)
	America's Test Kitchen (Tu)
	Ultimate Guide to Fly Fishing (W)
	American Woodshop (Th)
	SciGirls (F)
11:30 am	Pati's Mexican Table (M)
	Knit and Crochet Now (Tu)
	Woodsmith Shop (W)
	Sara's Weeknight Meals (Th)
	Mister Rogers (F)
12:00 pm	Sit and Be Fit (MWF)
	Creative Living (TuTh)
12:30 pm	Beads, Baubles and Jewels (M)
	It's Sew Easy (Tu)
	Fons & Porter's Love of Quilting (W)
	Welcome to My Studio (Th)
	Painting with Wilson Bickford (F)
1:00 pm	Sesame Street
1:30 pm	Pinkalicious & Peterrific
2:00 pm	Clifford the Big Red Dog
2:30 pm	Let's Go Luna!
3:00 pm	Alma's Way
3:30 pm	Xavier Riddle and the Secret Museum
4:00 pm	Odd Squad
4:30 pm	Gzero World with Ian Bremmer (M)
	Kevin Belton's Cookin' Louisiana (Tu)
	Jazzy Vegetarian (W)
	Journeys In Japan (Th)
	Canvassing The World (F)
5:00 pm	Washington Week (M)
	Around The Farm Table (Tu)
	News 3 New Mexico (W)
	Outside: Beyond The Lens (Th)
	News 3 New Mexico (F)
5:30 pm	BBC World News America
6:00 pm	PBS NewsHour

Channel 3-3

Monday through Friday

5:00 am	Molly of Denali
5:30 am	Xavier Riddle and the Secret Museum
6:00 am	Hero Elementary
6:30 am	Alma's Way
7:00 am	Curious George
7:30 am	Daniel Tiger's Neighborhood
8:00 am	Donkie Hodie
8:30 am	Elinor Wonders Why
9:00 am	Sesame Street
9:30 am	Pinkalicious & Peterrific
10:00 am	Dinosaur Train
10:30 am	Clifford the Big Red Dog
11:00 am	Sesame Street
11:30 am	Donkie Hodie
12:00 pm	Daniel Tiger's Neighborhood
12:30 pm	Let's Go Luna!
1:00 pm	Nature Cat
1:30 pm	Wild Kratts
2:00 pm	Alma's Way
2:30 pm	Xavier Riddle and the Secret Museum
3:00 pm	Odd Squad
3:30 pm	Arthur
4:00 pm	Molly of Denali
4:30 pm	Ready, Jet, Go!
5:00 pm	Sesame Street
5:30 pm	Pinkalicious & Peterrific
6:00 pm	Nature Cat
6:30 pm	Wild Kratts
7:00 pm	Molly of Denali
7:30 pm	Xavier Riddle and the Secret Museum
8:00 pm	Odd Squad
8:30 pm	Arthur

Saturday

5:00 am	Molly of Denali
5:30 am	Mister Rogers
6:00 am	Hero Elementary
6:30 am	Alma's Way
7:00 am	Curious George
7:30 am	Daniel Tiger's Neighborhood
8:00 am	Donkie Hodie
8:30 am	Elinor Wonders Why
9:00 am	Sesame Street
9:30 am	Pinkalicious & Peterrific
10:00 am	Dinosaur Train
10:30 am	Cyberchase
11:00 am	Mister Rogers
11:30 am	Hero Elementary
12:00 pm	Sesame Street
12:30 pm	Daniel Tiger's Neighborhood
1:00 pm	Pinkalicious & Peterrific
1:30 pm	Donkie Hodie
2:00 pm	Alma's Way
2:30 pm	Curious Crew
3:00 pm	Molly of Denali
3:30 pm	Wild Kratts
4:00 pm	SciGirls
4:30 pm	Arthur
5:00 pm	Hero Elementary
5:30 pm	Cyberchase
6:00 pm	Elinor Wonders Why
6:30 pm	Daniel Tiger's Neighborhood
7:00 pm	Wild Kratts
7:30 pm	SciGirls
8:00 pm	Arthur
8:30 pm	Mister Rogers

Sunday

5:00 am	Molly of Denali
5:30 am	Mister Rogers
6:00 am	Hero Elementary
6:30 am	Alma's Way
7:00 am	Curious George
7:30 am	Daniel Tiger's Neighborhood
8:00 am	Donkie Hodie
8:30 am	Elinor Wonders Why
9:00 am	Sesame Street
9:30 am	Pinkalicious & Peterrific
10:00 am	Dinosaur Train
10:30 am	Cyberchase
11:00 am	Mister Rogers
11:30 am	Hero Elementary
12:00 pm	Sesame Street
12:30 pm	Daniel Tiger's Neighborhood
1:00 pm	Pinkalicious & Peterrific
1:30 pm	Donkie Hodie
2:00 pm	Alma's Way
2:30 pm	Curious Crew
3:00 pm	Molly of Denali
3:30 pm	Wild Kratts
4:00 pm	SciGirls
4:30 pm	Arthur
5:00 pm	Hero Elementary
5:30 pm	Cyberchase
6:00 pm	Elinor Wonders Why
6:30 pm	Daniel Tiger's Neighborhood
7:00 pm	Wild Kratts
7:30 pm	SciGirls
8:00 pm	Arthur
8:30 pm	Mister Rogers

Channel 3-1

Saturday

5:00 am	Mister Rogers
5:30 am	Arthur
6:00 am	Molly of Denali
6:30 am	Wild Kratts
7:00 am	Hero Elementary
7:30 am	Alma's Way
8:00 am	Curious George
8:30 am	Daniel Tiger's Neighborhood
9:00 am	Donkie Hodie
9:30 am	Elinor Wonders Why
10:00 am	Sesame Street
10:30 am	Pinkalicious & Peterrific

Sunday

5:00 am	Mister Rogers
5:30 am	Arthur
6:00 am	Molly of Denali
6:30 am	Wild Kratts
7:00 am	Hero Elementary
7:30 am	Alma's Way
8:00 am	Curious George
8:30 am	Daniel Tiger's Neighborhood
9:00 am	Donkie Hodie
9:30 am	Elinor Wonders Why
10:00 am	Sesame Street
10:30 am	Pinkalicious & Peterrific



KENW-TV'S 3-1 WEEKDAY SCHEDULES

How-to's and Family Viewing

Mondays

- 5:00 3-1 Classical Stretch
- 5:30 3-1 Wai Lana Yoga
- 6:00 3-1 New Mexico in Focus
- 7:00 3-1 In the Americas
- 7:30 3-1 Curious Traveler
- 8:00 3-1 Rick Steves' Europe
- 8:30 3-1 Jacques Pepin: Heart & Soul
- 9:00 3-1 Pati's Mexican Table
- 9:30 3-1 Kevin Belton's New Orleans
- 10:00 3-1 P. Allen Smith's Garden Home
- 10:30 3-1 Jazzy Vegetarian
- 11:00 3-1 Classical Stretch
- 11:30 3-1 Sit and Be Fit
- 12:00 3-1 In Their Own Words
- Queen Elizabeth's Secret Agents (Pt. 1, 22nd)
- Boleyns: A Scandalous Family (3 Pts., begins 29th)
- 1:00 3-1 Masterpiece "Grantchester" (ends 15th)
- Queen Elizabeth's Secret Agents (Pt. 2, 22nd)
- Masterpiece "Guilt 2" (begins 29th)
- 2:00 3-1 COBRA: Cyberwar (ends 15th)
- Queen Elizabeth's Secret Agents (Pt. 3, 22nd)
- Masterpiece "Guilt 2," Pt. 2
- 3:00 3-1 Travels with Darley
- 3:30 3-1 Beyond Your Backyard
- 4:00 3-1 America's Heartland
- 4:30 3-1 Daytripper
- 5:00 3-1 Texas Parks and Wildlife
- 5:30 3-1 BBC World News America
- 6:00 3-1 PBS NewsHour

Thursdays

- 5:00 3-1 Classical Stretch
- 5:30 3-1 Wai Lana Yoga
- 6:00 3-1 Story in the Public Square
- 6:30 3-1 Canada Files
- 7:00 3-1 Texas Parks & Wildlife
- 7:30 3-1 Ultimate Guide to Fly Fishing
- 8:00 3-1 Antiques Roadshow
- 9:00 3-1 Fons & Porter's Love of Quilting
- 9:30 3-1 Quilting Arts
- 10:00 3-1 Knit and Crochet Now
- 10:30 3-1 Fit 2 Stitch
- 11:00 3-1 Classical Stretch
- 11:30 3-1 Happy Yoga
- 12:00 3-1 Milk Street
- 12:30 3-1 Simply Ming (ends 11th)
- Yan Can Cook (begins 18th)
- 1:00 3-1 Taste of Malaysia
- 1:30 3-1 Jacques Pepin: Heart & Soul
- 2:00 3-1 Green Planet (ends 4th)
- Nature (11th)
- Wild Weather (18th)
- Nature (25th)
- 3:00 3-1 Roadtrip Nation
- 4:00 3-1 Nova
- 5:00 3-1 Medical Stories
- 5:30 3-1 BBC World News America
- 6:00 3-1 PBS NewsHour

Tuesdays

- 5:00 3-1 Classical Stretch
- 5:30 3-1 Wai Lana Yoga
- 6:00 3-1 Antiques Roadshow
- 7:00 3-1 Samantha Brown's Places to Love
- 7:30 3-1 Crossing South
- 8:00 3-1 Wild Nevada
- 8:30 3-1 Getting Dot Older
- 9:00 3-1 Growing Bolder
- 9:30 3-1 Medical Stories
- 10:00 3-1 Healthy Minds (ends 23rd)
- Doctor Q & A (begins 30th)
- 10:30 3-1 Fishing Behind the Lines
- 11:00 3-1 Classical Stretch
- 11:30 3-1 Wai Lana Yoga
- 12:00 3-1 Christina Cools
- 12:30 3-1 Ellie's Real Good Food
- 1:00 3-1 Craft in America
- 2:00 3-1 History Detectives
- 3:00 3-1 Antiques Roadshow
- 4:00 3-1 Consuelo Mack Wealthtrack
- 4:30 3-1 Tell Me More
- 5:00 3-1 Firing Line
- 5:30 3-1 BBC World News America
- 6:00 3-1 PBS NewsHour



Fridays

- 5:00 3-1 Classical Stretch
- 5:30 3-1 Yndi Yoga
- 6:00 3-1 America's Heartland
- 6:30 3-1 Gardenfit
- 7:00 3-1 Song of the Mountains
- 8:00 3-1 Songs at the Center
- 8:30 3-1 Lost River Sessions
- 9:00 3-1 Classical Tahoe (ends 12th)
- Woodsongs (begins 19th)
- 10:00 3-1 Joy of Painting
- 10:30 3-1 Painting with Paulson (ends 5th)
- Painting and Travel (begins 12th)
- 11:00 3-1 Classical Stretch
- 11:30 3-1 Sit and Be Fit
- 12:00 3-1 This Old House
- 12:30 3-1 Ask This Old House
- 1:00 3-1 Make It Artsy
- 1:30 3-1 Pocket Sketching
- 2:00 3-1 Creative Living
- 2:30 3-1 Weekends with Yankee
- 3:00 3-1 Outside: Beyond the Lens (ends 12th)
- Great Scenic Railway Journeys (begins 19th)
- 3:30 3-1 Samantha Brown Places to Love
- 4:00 3-1 Roadtrip Nation
- 4:30 3-1 Gzero World with Ian Bremmer
- 5:00 3-1 History with David Rubenstein
- 5:30 3-1 BBC World News America
- 6:00 3-1 PBS NewsHour

Wednesdays

- 5:00 3-1 Classical Stretch
- 5:30 3-1 Wai Lana Yoga
- 6:00 3-1 History with David Rubenstein
- 6:30 3-1 Tell Me More
- 7:00 3-1 World's Greatest Cruises (ends 24th)
- Travels with Darley (begins 31st)
- 7:30 3-1 Outside: Beyond the Lens (ends 10th)
- Great Scenic Railway Journeys (begins 17th)
- 8:00 3-1 History Detectives
- 9:00 3-1 George Hirsch Lifestyle
- 9:30 3-1 J. Schwanke's Life in Bloom
- 10:00 3-1 American Woodshop
- 10:30 3-1 Woodsmith Shop
- 11:00 3-1 Classical Stretch
- 11:30 3-1 Sit and Be Fit
- 12:00 3-1 Steven Raichlen's Project Fire
- 12:30 3-1 Cook's Country
- 1:00 3-1 Chef's Life
- 1:30 3-1 Farmer and the Foodie (ends 3rd)
- Tim Farmer's Country Kitchen (begins 10th)
- 2:00 3-1 To Dine For with Kate Sullivan
- 2:30 3-1 Crossing South
- 3:00 3-1 Finding Your Roots
- 4:00 3-1 Lidia's Kitchen
- 4:30 3-1 America's Test Kitchen
- 5:00 3-1 Story in the Public Square
- 5:30 3-1 BBC World News America
- 6:00 3-1 PBS NewsHour

Playas:

The Land of Little Lakes

This half-hour documentary is about playa lakes and their vital role as a recharge feature of the Ogallala aquifer. An examination of these treasured wetlands reveals the diverse community leading the efforts in restoration and conservation.

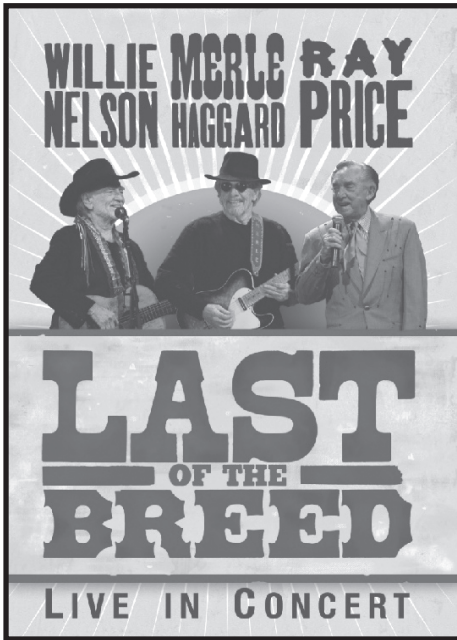
Interviews with top researchers from Texas Tech, Oklahoma State and Kansas State consider the ephemeral nature of the playas, the critical habitat they provide for wildlife and the ecosystem services they provide.

Landowners and leading experts in Texas, Oklahoma, New Mexico, Colorado, Kansas and Nebraska share the successes of government funded restoration programs and a continued legacy of land stewardship.

Playas: The Land of Little Lakes airs on 3-2 Sunday, the 28th at 1:00 p.m. It airs on 3-1 Thursday, the 18th at 10:30 p.m.



Fall Festival



Celebrate the greatest hits of Willie Nelson, Merle Haggard and Ray Price in this 2007 concert. With the richest voices this side of the Rio Grande, the three legends give rousing performances on a treasure trove of honky-tonk and Texas swing tunes, including "Okie From Muskogee," "Pancho and Lefty," "For the Good Times," "Night Life," "Crazy," "Mama Tried," "Always on My Mind," "On the Road Again" and many others.

Last of the Breed airs on 3-2 Monday, the 15th at 7:00 p.m. Watch it on 3-1 Thursday, the 18th at 8:30 p.m.

- 3:00 3-2 **Knit and Crochet Now**
"Pet Couch Covers"
3-1 *America's Test Kitchen*
- 3:30 3-2 **This Old House**
"Saratoga Springs"
3-1 *Cook's Country*
- 4:00 3-2 **Ask This Old House**
3-1 *Wild Weather*
- 4:30 3-2 **Welcome to My Studio**
"Cadmium Orange"
- 5:00 3-2 **Sewing with Nancy**
"30 Minute Doll Clothes"
3-1 *PBS NewsHour Weekend*
- 5:30 3-2 **It's Sew Easy** "Playful Pants"
3-1 *Report from Santa Fe*
- 6:00 3-2 **Report from Santa Fe**
3-1 *Doo Wop, Pop and Soul Generations*
- 6:30 3-2 **James Taylor: One Man Band**
- 8:00 3-2 **Coldplay: Live in São Paulo**
- 8:30 3-1 *Frankie Valli & the Four Seasons: A Life on the Stage*
- 9:00 3-3 *Lawrence Welk Show*
- 10:00 3-2 **Nova "Eagle Power"**
3-1 *Austin City Limits*
3-3 *Classic Gospel*
- 11:00 3-2 **Wild Weather**
3-1 *Nova "Eagle Power"*
3-3 *Woodsongs*

- 12:00 3-2 **Austin City Limits**
"Stevie Ray Vaughan"
3-1 *Wild Weather*
3-3 *Song of the Mountains*

Sunday 21st

- 6:00 3-2 **Painting & Travel** "Devil's Tower"
- 6:30 3-2 **Second Opinion**
"Parkinson's Disease"
- 7:00 3-2 **Antiques Roadshow**
"Hotel Del Coronado," Pt. 3
- 8:00 3-2 **Classic Gospel** "David Phelps"
- 9:00 3-2 **Joy of Music** "Marble Collegiate Church NYC"
- 9:30 3-2 **Music and the Spoken Word**
- 10:00 3-2 **Finding Your Roots**
"Off the Farm"
- 11:00 3-2 **Doo Wop, Pop and Soul Generations**
3-1 *Rick Steves' European Travel Tips and Tricks*
- 12:30 3-1 *Aging Backwards 3*
- 1:30 3-2 **On Broadway**
3-1 *Market to Market*
- 2:00 3-1 *Ancient Remedies*
- 3:00 3-2 **Medical Stories** "Under Control"
- 3:30 3-2 **Second Opinion with Joan Lunden** "Millennial Health II"
3-1 *Pack Horse Librarians of Appalachia*
- 4:00 3-2 **Classic Gospel** "Joey and Rory"
3-1 *Nova "Eagle Power"*
- 5:00 3-2 **You Should Know**
3-1 *PBS NewsHour Weekend*
- 5:30 3-2 **Freedom Songs: The Music of the Civil Rights Movement**
3-1 *James Taylor: One Man Band*
- 7:00 3-2 **All Creatures Great and Small: The Next Chapter**
3-1 *Chris Botti & The Dallas Symphony*
- 8:30 3-2 **Frankie Valli & The Four Seasons: A Life on Stage**
3-1 *Patrizio Buanne: Celebration!*
- 9:00 3-3 *Daytripper*
- 9:30 3-3 *America's Heartland*
- 10:00 3-2 **Write Around the World**
"Southern Spain," Pt. 3
3-1 *Write Around the World "Southern Italy," Pt. 1*
3-3 *This Old House*
- 10:30 3-3 *Ask This Old House*

- 11:00 3-2 **Finding Your Roots**
"Off the Farm"
3-1 *Rick Steves Rome*
3-3 *Motorweek*
- 11:30 3-3 *Texas Parks and Wildlife*
- 12:00 3-2 **Nova "Eagle Power"**
3-1 *Queen Elizabeth's Secret Agents, Pt. 1*
3-3 *Wild Weather*

Monday 22nd

- 7:00 3-2 **Antiques Roadshow**
"Philbrook Museum," Pt. 3
3-1 *Family Pictures USA*
- 8:00 3-2 **Write Around the World**
"Southern Italy," Pt. 1
3-1 *Walter Anderson: The Extraordinary Art and Life of the Islander*
- 9:00 3-2 **POV "Through the Night"**
3-1 *Antiques Roadshow*
3-3 *Queen Elizabeth's Secret Agents, Pt. 1*
- 10:00 3-1 *Amanpour and Company*
3-3 *Queen Elizabeth's Secret Agents, Pt. 2*
- 10:30 3-2 **Texas Parks and Wildlife**
- 11:00 3-2 **Antiques Roadshow**
"Philbrook Museum" Pt. 1
3-1 *PBS NewsHour*
3-3 *Queen Elizabeth's Secret Agents, Pt. 3*
- 12:00 3-2 **PBS NewsHour**
3-1 *POV "Through the Night"*
3-3 *Craft in America*

Tuesday 23rd

- 7:00 3-2 **Finding Your Roots**
"Fashion's Roots"
3-1 *Women and the Vote*
- 8:00 3-2 **American Experience**
"The Murder of Emmett Till"
3-1 *Write Around the World "Southern Italy," Pt. 1*
- 9:00 3-2 **You Should Know**
3-1 *Finding Your Roots*
3-3 *Antiques Roadshow*
- 9:30 3-2 **Creative Living**
- 10:00 3-2 **Frontline** "Supreme Revenge: Battle for the Court"
3-1 *Amanpour and Company*
3-3 *History Detectives*

The Murder of Emmett Till

AMERICAN EXPERIENCE

"The Murder of Emmett Till" takes viewers back 65 years to August 1955, when a 14-year-old African American boy whistled at a white woman in a grocery store in Money, Mississippi. Emmett Till, a teen from Chicago, didn't understand that he had broken the unwritten laws of the Jim Crow South until three days later, when on August 28 two white men dragged him from his bed in the dead of night, beat him brutally and then shot him in the head. Although his killers were arrested and charged with murder, they were both acquitted quickly by an all-white, all-male jury.

Shortly afterward, the defendants sold their story, including a detailed account of how they murdered Till, to a journalist. The murder and the trial horrified the nation and the world and helped mobilize the Civil Rights movement. Three months after his body was pulled from the Tallahatchie River, the Montgomery bus boycott began. The film uncovered new eyewitnesses to the crime and helped prompt the U.S. Department of Justice to reopen the case.

"The Murder of Emmett Till" on **American Experience** can be seen on 3-2 Tuesday, the 23rd at 8:00 p.m. It airs on 3-1 Wednesday, the 24th at 7:00 p.m.

Fall Festival



Patrizio Buanne: Celebration!

Celebration! is Patrizio Buanne at his best: 15 years of hits, laughter and Dolce Vita from the enigmatic Neapolitan singer and entertainer, all captured in a fantastic feel-good concert filmed in South Africa in 2019.

The concert includes many of his greatest hits, including "Il Mondo," "Bella Bella Signorina," "Mambo Italiano," "You're My World" and Patrizio originals such as "Forever Begins Tonight," "Only Your Love Takes Me Home" and "Solo Tu My Baby."

Patrizio Buanne: Celebration! will be broadcast on 3-2 Wednesday, the 17th at 7:00 p.m. It airs on 3-1 Sunday, the 21st at 8:30 p.m.

- 8:00 3-2 **Amanpour and Company**
- 3-1 *PBS NewsHour*
- 3-3 *Wild Weather*
- 12:00 3-2 **PBS NewsHour**
- 3-1 **Frontline** "Supreme Revenge: Battle for the Court"
- 3-3 *Craft in America*

Wednesday 24th

- 7:00 3-2 **Nature** "The Bat Man of Mexico"
- 3-1 *America Experience*
- "The Murder of Emmett Till"
- 8:00 3-2 **Nova** "Operation Lighthouse Rescue"
- 3-1 *American Experience*
- "Fatal Flood"
- 9:00 3-2 **American Experience**
- "Fatal Flood"
- 3-1 *Nature* "The Bat Man of Mexico"
- 3-3 *America Experience*
- 10:00 3-2 **Second Opinion** "Caregiving: The Sandwich Generation"
- 3-1 *Amanpour and Company*
- 3-3 *To Dine For*
- 10:30 3-2 **This Old House**
- "Saratoga Springs"
- 3-3 *Crossing South*
- 11:00 3-2 **Amanpour and Company**
- 3-1 *PBS NewsHour*
- 3-3 *Travels with Darley*
- 11:30 3-3 *Rick Steves' Europe*

- 12:00 3-2 **PBS NewsHour**
- 3-1 *Nova* "Operation Lighthouse Rescue"
- 3-3 *In the Americas*

Thursday 25th

- 7:00 3-2 **Frontline** "Supreme Revenge: Battle for the Court"
- 3-1 *Song of the Mountains*
- 8:00 3-2 **Song of the Mountains**
- "Jeff Little Trio"
- 3-1 *Red Green Show* "Cell Hell"
- 8:30 3-1 *You Should Know*
- 9:00 3-2 **Goes Wrong Show**
- "Christmas Special"
- 3-1 *Creative Living*
- 3-3 *Roadtrip Nation*
- 9:30 3-2 **Red Green Show** "Cell Hell"
- 3-1 *World's Greatest Cemeteries*
- 10:00 3-2 **Woodsongs** "Woodsongs Kids Celebration"
- 3-1 *Amanpour and Company*
- 3-3 *Nature*
- 11:00 3-2 **Amanpour and Company**
- 3-1 *PBS NewsHour*
- 3-3 *Nova*
- 12:00 3-2 **PBS NewsHour**
- 3-1 *Family Pictures USA, Pt. 1*
- 3-3 *Medical Stories*

Friday 26th

- 7:00 3-2 **Market to Market**
- 3-1 *Washington Week*
- 7:30 3-2 **Consuelo Mack Wealthtrack**
- 3-1 *Firing Line with Margaret Hoover*
- 8:00 3-2 **Washington Week**
- 3-1 *Nova* "Operation Lighthouse Rescue"
- 8:30 3-2 **Firing Line**
- 9:00 3-2 **Great Performances** "Vienna Philharmonic Summer Night"
- 3-1 *Frontline* "Supreme Revenge: Battle for the Court"
- 3-3 *This Old House*
- 9:30 3-3 *Ask This Old House*
- 10:00 3-1 *Amanpour and Company*
- 3-3 *American Woodshop*
- 10:30 3-2 **Water of Life**
- 3-3 *Woodsmith Shop*
- 11:00 3-1 *PBS NewsHour*
- 3-3 *Joy of Painting*
- 11:30 3-3 *Make It Artsy*
- 12:00 3-2 **PBS NewsHour**
- 3-1 *Seaside Hotel*
- 3-3 *Start Up*

Saturday 27th

- 6:00 3-2 **Steve Raichlen's Project Fire**
- "Best Ribs Ever"
- 6:30 3-2 **Home Diagnosis** "Rochester, NY to Flip or Flee"
- 7:00 3-2 **Cook's Country**
- 7:30 3-2 **Farmer and the Foodie**
- "Jeptha Creed Distillery"
- 8:00 3-2 **America's Test Kitchen** "Grilled Cheese and Tomato Soup"
- 8:30 3-2 **Christopher Kimball's Milk Street** "Crazy Noodles"
- 9:00 3-2 **Sara's Weeknight Meals**
- "Chicks Rule"
- 9:30 3-2 **Motorweek**
- 10:00 3-2 **Family Plot: Gardening in the Mid-South** "Planting a Butterfly Garden"
- 10:30 3-2 **Garden Smart** "Visiting Unique Gardens"

- 11:00 3-2 **Paint This with Jerry Yarnell**
- "Desert Miracle"
- 3-1 *Kevin Belton's Cookin' Louisiana*
- 11:30 3-2 **Joy of Painting**
- "Mountain Ridge Lake"
- 3-1 *Pati's Mexican Table*
- 12:00 3-2 **Painting with Wilson Bickford**
- "Ocean Afternoon," Pt. 1
- 3-1 *This Old House*
- 12:30 3-2 **Quilt in a Day** "Harvest Star Wallhanging"
- 3-1 *This Old House*
- 1:00 3-2 **Quilting Arts** "Paint and Dye"
- 3-1 *Ask This Old House*
- 1:30 3-2 **Fons & Porter's Love of Quilting** "Scoops by the Seaside"
- 3-1 *Motorweek*
- 2:00 3-2 **Creative Living**
- 3-1 *Ask This Old House*
- 2:30 3-2 **Jazzy Vegetarian** "Weeknight Burger Meal"
- 3-1 *Steven Raichlen's Project Fire*
- 3:00 3-2 **Knit and Crochet Now**
- "Triangular Shawls"
- 3-1 *America's Test Kitchen*
- 3:30 3-2 **This Old House**
- "Saratoga Springs"
- 3-1 *Cook's Country*
- 4:00 3-2 **Ask This Old House**
- "Crown Molding"
- 3-1 *Nature* "The Bat Man of Mexico"

The Water of Life

The Story of the Single Malt Revolution

Shot in six countries, on three continents, over three years, **The Water of Life** tells the story of the creative revolution that saved Scotland's once-flagging whisky industry and turned it into the global titan it is today.

It features a half-dozen distillers and distilleries, but focuses much of its time on the resurrection of the tiny Bruichladdich Distillery on the remote Scottish island of Islay. Led by Mark Reynier and whisky legend Jim McEwan, the distillery went from being a mothballed memory to a world-beating innovator in a matter of years, helping to save the struggling economy of the island often called Whisky Island.

The Water of Life will be broadcast on 3-2 Friday, the 26th at 10:30 p.m.

- 4:30 3-2 **Welcome to My Studio**
- "Cadmium Red Light"
- 5:00 3-2 **Sewing with Nancy**
- "30 Minute Doll Clothes"
- 3-1 *PBS NewsHour Weekend*
- 5:30 3-2 **It's Sew Easy** "Stitch It Up"
- 3-1 *Report from Santa Fe*
- 6:00 3-2 **Report from Santa Fe**
- 3-1 *Antiques Roadshow*
- 6:30 3-2 **America's Heartland**
- 7:00 3-2 **Lawrence Welk Show**
- "Small Town, U.S.A."
- 3-1 *Great Performances* "Vienna Philharmonic Summer Night"
- 8:00 3-2 **World's Greatest Cruises**
- "Alaska Goldrush"

Fall Festival



John Williams: The Berlin Concert

In 2021, Hollywood legend John Williams made his conducting debut with the renowned Berliner Philharmoniker. Filmed live at the Berlin Philharmonie, **John Williams: The Berlin Concert** captures this magical performance of his music.

After opening with the "Olympic Fanfare and Theme," Williams and the Berlin players perform some of his best-known film scores. From the futuristic sounds of "Close Encounters" to the instantly evocative opening notes of "Hedwig's Theme" from the Harry Potter movies to musical excerpts from "Jurassic Park," "Superman," and the "Indiana Jones" and "Star Wars" series, there's something for everyone.

John Williams: The Berlin Concert airs on 3-2 Wednesday, the 17th at 8:30 p.m. Watch it on 3-1 Sunday, the 14th at 8:00 p.m.

- 8:30 3-2 **Red Green Show**
"Red and Breakfast"
3-1 *Toying with Still Life: The Art of Jonathan Queen*
- 9:00 3-2 **Austin City Limits**
"Best of John Prine"
3-1 *Goes Wrong Show*
3-3 *Lawrence Welk Show*
- 9:30 3-1 *Sound on Tap*
- 10:00 3-2 **Nova** "Operation Lighthouse Rescue"
3-1 *Austin City Limits*
3-3 *Classic Gospel*
- 11:00 3-2 **Nature** "Bat Man of Mexico"
3-1 *Nova* "Operation Lighthouse Rescue"
3-3 *Woodsongs*
- 12:00 3-2 **Austin City Limits**
"Best of John Prine"
3-1 *Nature* "The Bat Man of Mexico"
3-3 *Song of the Mountains*

Sunday 28th

- 6:00 3-2 **Painting & Travel**
"The Sheep Wagon"
- 6:30 3-2 **Second Opinion**
"The Cancer Spouse"
- 7:00 3-2 **Antiques Roadshow**
"Philbrook Museum," Pt. 1

- 8:00 3-2 **Classic Gospel** "Steven Curtis Chapman"
- 9:00 3-2 **Joy of Music** "Life and Music of Charles Marie"
- 9:30 3-2 **Music and the Spoken Word**
- 10:00 3-2 **Finding Your Roots**
"Fashion Roots"
- 11:00 3-2 **New Mexico in Focus**
3-1 *Washington Week*
- 11:30 3-1 *Healthy Minds*
- 12:00 3-2 **Pati's Mexican Table**
3-1 *New Mexico in Focus*
- 12:30 3-2 **Texas Parks and Wildlife**
- 1:00 3-2 **Playas: The Land of Little Lakes**
3-1 *Consuelo Mack Wealthtrack*
- 1:30 3-2 **Closer to Truth** "Big Questions in Free Will I"
3-1 *Market to Market*
- 2:00 3-2 **Becoming Trauma Responsive**
3-1 *P. Allen Smith's Garden Home*
- 2:30 3-1 *J. Schwanke's Life in Bloom*
- 3:00 3-2 **Medical Stories** "Disabling Pain"
3-1 *Walter Anderson: The Extraordinary Art and Life of the Islander*
- 3:30 3-2 **Second Opinion with Joan Lunden** "Conquering Obesity"
- 4:00 3-2 **Classic Gospel** "Bill Gaither's Country Gospel"
3-1 *Nova* "Operation Lighthouse Rescue"
- 5:00 3-2 **You Should Know**
3-1 *PBS NewsHour Weekend*
- 5:30 3-2 **Wild Travels**
3-1 *By the River*
- 6:00 3-2 **Broadchurch 2**, Pt. 1
3-1 *Boleyns: A Scandalous Family*, Pt. 1
- 7:00 3-2 **Boleyns: A Scandalous Family**
"Ambition," Pt. 1
3-1 *Masterpiece* "Guilt 2," Pt. 1
- 8:00 3-2 **Masterpiece** "Guilt 2," Pt. 1
3-1 *Masterpiece* "Guilt 2," Pt. 2
- 9:00 3-2 **Masterpiece** "Guilt 2," Pt. 2
3-1 *Dream of Italy: Travel, Transform, and Thrive*
3-3 *Daytripper*
- 9:30 3-3 *America's Heartland*
- 10:00 3-2 **Boleyns: A Scandalous Family**
"Ambition," Pt. 1
3-1 *Write Around the World*, "Southern France," Pt. 2
3-3 *This Old House*
- 10:30 3-3 *Ask This Old House*
- 11:00 3-2 **Finding Your Roots**
"Fashion's Roots"
3-1 *Broadchurch 2*, Pt. 1
3-3 *Motorweek*
- 11:30 3-3 *Texas Parks and Wildlife*
- 12:00 3-2 **Nova** "Operation Lighthouse Rescue"
3-1 *Masterpiece* "Guilt 2," Pt. 1
3-3 *Nature*

Monday 29th

- 7:00 3-2 **Antiques Roadshow** "Churchill Downs Racetrack," Pt. 2
3-1 *Family Pictures USA*
- 8:00 3-2 **Write Around the World**
"Southern France," Pt. 2
3-1 *Man Who Destroyed Oscar Wilde*
- 9:00 3-2 **POV** "Faya Dayi"
3-1 *Antiques Roadshow*
3-3 *Boleyns: A Scandalous Family*
- 10:00 3-1 *Amanpour and Company*
3-3 *Masterpiece* "Guilt," Pt. 1

- 11:00 3-2 **Antiques Roadshow**
"Philbrook Museum," Pt. 2
3-1 *PBS NewsHour*
3-3 *Masterpiece* "Guilt," Pt. 2
- 12:00 3-2 **PBS NewsHour**
3-1 *POV* "Faya Day I"
3-3 *Craft in America*

Tuesday 30th

- 7:00 3-2 **Finding Your Roots**
"Criminal Kind"
3-1 *Becoming Trauma Responsive*
- 8:00 3-2 **Rise of the Bolsonaros**
3-1 *Write Around the World*, "Southern France," Pt. 2
- 9:00 3-1 *Finding Your Roots*
3-3 *Antiques Roadshow*
- 10:00 3-2 **Becoming Trauma Responsive**
3-1 *Amanpour and Company*
3-3 *History Detectives*
- 11:00 3-2 **Amanpour and Company**
3-1 *PBS NewsHour*
3-3 *Nature*
- 12:00 3-2 **PBS NewsHour**
3-1 *Rise of the Bolsonaros*
3-3 *America's Heartland*

Wednesday 31st

- 7:00 3-2 **Nature** "Cuba's Wild Revolution"
3-1 *Pullman: America's Hotel on Wheels*
- 8:00 3-2 **Nova** "A to Z: The First Alphabet"
3-1 *Surviving the Dust Bowl*
- 9:00 3-2 **AmericanExperience**
"Surviving the Dust Bowl"
3-1 *Nature* "Cuba's Wild Revolution"
3-3 *American Experience* "Surviving the Dust Bowl"
- 10:00 3-2 **Second Opinion** "Anxiety"
3-1 *Amanpour and Company*
3-3 *To Dine For*
- 10:30 3-2 **This Old House**
"Saratoga Springs"
3-3 *Crossing South*
- 11:00 3-2 **Amanpour and Company**
3-1 *PBS NewsHour*
3-3 *Travels with Darley*
- 11:30 3-3 *Rick Steves' Europe*
- 12:00 3-2 **PBS NewsHour**
3-1 *Nova*
3-3 *In the Americas*

FAYA DAYI



"Faya Dayi," a two-hour POV episode, reports on a hypnotic immersion in the world of Harar, Ethiopia. It is here, where khat, a euphoria-inducing plant, holds sway over the rituals and rhythms of everyday life.

"Faya Dayi" captures moments in the lives of everyone from the harvesters of the crop to people lost in its narcotic haze to a desperate but determined younger generation searching for an escape from political strife.

Official selection 2021 Sundance Film Festival. Shortlisted, 94th Academy Awards.

"Faya Dayi" on **POV** will be broadcast on 3-2 Monday, the 29th at 9:00 p.m. On 3-1, it airs Sunday, September 4th at 8:00 p.m.

**This space
could be yours!**

Underwriting
opportunities,
please call toll-free
(888) 367-5369. Ask for
Rena for TV, Desirée for FM

BUSINESS FRIENDS

**We gratefully acknowledge these businesses and organizations
that help make our programming possible.**

el Zocalo
Cooperative Art Gallery
Las Vegas, NM
In Support of FM Programming
Primetime Programming, TV

Raton
New Mexico
Raton, NM
Morning Edition, FM
All Things Considered, FM

HERITAGE MUSEUM
LEA COUNTY COWBOY
HALL OF FAME
Hobbs, NM
All Things Considered, FM

**Featherstone
Development
Corporation**
Roswell, NM
Nature,
BBC World News America,
Star Gazers

CJ's PILL BOX
Pharmacy... At your Service
Portales, NM
Fitness Minute,
Classical Guitar Alive, FM
Mt. Stage, FM

VALLEY MOWER CLINIC, INC.
Clovis, NM
Family Plot:
Gardening in the Mid-South

**New Mexico
GAS COMPANY®**
AN EMERA COMPANY
In support of
FM and TV programming

**Atwood, Malone,
Turner & Sabin**
Attorneys at Law
Roswell, NM
Evening Symphony, FM
All Things Considered, FM
FM Programming

CALIBERS
SHOP LEARN PLAY
Clovis, NM
New Letters, FM

TECO BOX
Clovis and Portales, NM
Wait, Wait...Don't Tell Me,
FM

**Living Desert Zoo
& Gardens**
State Park
Made possible by
the New Mexico
Lodgers Tax
Carlsbad, NM
Nova
America's Heartland

Paul and Elise Schmidt
PBS NewsHour
Washington Week

YUCCA
(575) 226-2255
yuccatelecom.com
201 W. 3rd Street, Portales, NM 88130
Portales, NM
Nova

First Presbyterian Church
Roswell, NM
With Heart and Voice, FM

Clovis Community College
Cultural Arts Series
Clovis and Portales, NM
Wait, Wait...Don't Tell Me,
FM

The NEWS
Clovis and Portales, NM
Austin City Limits

BLUE LOTUS
DAY SPA & YOGA STUDIO
Ruidoso, NM
In support of
FM programming

Taylor Water Well Service
Water Well Drilling
Pump Sales & Service
Carlsbad, NM
This American Life, FM
Wait, Wait...Don't Tell Me,
Radiolab, FM

City of CARLSBAD
Carlsbad, NM
In support of
FM programming

paper trail....
Las Vegas, NM
Insight, FM
Weekend Programming, FM

Roswell Jazz Festival
Roswell, NM
Piano Jazz, FM
Jazz Programming, FM

SECURITY STATE BANK
Farwell, TX
Antiques Roadshow

jfmaddox
foundation
In support of
FM programming

nma
new mexico arts
public support for the arts
Concierto, FM
Fiesta, FM

FEC
Farmers' Electric Cooperative,
Inc. of New Mexico
Clovis, NM
Ask This Old House

NMDA
New Mexico Department of Agriculture
Las Cruces, NM
America's Heartland

**HIGH COUNTRY
AGENCY, INC.**
INSURANCE
Ruidoso, NM
Morning Edition, FM

**Roosevelt County Electric
Cooperative**
Antiques Roadshow

**Living Desert Zoo &
Gardens State Park**
Open Every Day Except Christmas
Carlsbad, NM
Austin City Limits,
Nature, PBS NewsHour

CJ's PILL BOX
Pharmacy... At your Service
Portales, NM
Antiques Roadshow,
Health related programs,
Report from Santa Fe,
Sportslook

PLATEAU
Clovis, NM
Evening News/Public Affairs
BBC World News
News 3 New Mexico

**James Polk Stone
Community Bank**
Clovis, Eunice, Hagerman,
Hobbs, Portales, Roswell,
Carlsbad
Austin City Limits

ANDERSON, BETHANY
Roswell, NM
Classic Gospel
FUNERAL HOME
AND CREMATORY

**EASTERN
NEW MEXICO
UNIVERSITY**
Portales, NM
Sesame Street

**Featherstone
Development
Corporation**
Roswell, NM
Morning Edition, FM
Jazz Programming, FM

PORTALES
Gateway to a Good Life
Portales, NM
In support of
FM programming

State Farm™
David Bonner
Portales, NM
Planet Money/
How I Built This, FM

CITY OF LAS VEGAS, NM
In support of
FM programming

**United
supermarkets**
Market
STREET
Albertsons
Market
In support of
FM programming

**CHAVES COUNTY FARM
AND LIVESTOCK BUREAU**
Dexter and Roswell, NM
America's Heartland

HOCO Havenor Operating Company
Roswell, NM
American Experience,
America's Heartland,
Masterpiece,
Nova, PBS NewsHour,
Report from Santa Fe

KENW-FM LOG

KENW-FM, Portales, NM, 89.5 MHz — KMTN-FM, Maljamar, NM, 98.7 MHz — KENM-FM, Tucumcari, NM, 88.9 MHz —
 KENU-FM, Des Moines, NM, 88.5 MHz — KENG-FM, Ruidoso, NM, 88.5 MHz — KENE-FM, Raton, NM, 88.1 MHz
 Translators: Apache Springs, 90.9 MHz; Clayton, 93.5 MHz; Des Moines, 106.1 MHz; Ft. Sumner, 91.7 MHz;
 Las Vegas, 88.1 MHz; Roswell, 91.1 MHz; Wagon Mound, 92.1 MHz.

Sundays

8:00 a.m. WITH HEART AND VOICE
 Aug 7 I Believe
 Aug 14 August Birthdays
 Aug 21 Music for Evening
 Aug 28 The Princeton Singers
9:00 a.m. FOOTLIGHT PARADE
 Aug 7 September Songs
 Aug 14 1951 on Stage and Screen
 Aug 21 Seven Annie Oakleys Hit a Bullseye
 Aug 28 Rodgers without Heart or Hammerstein
10:00 a.m. RADIO LAB
11:00 a.m. FRESH AIR WEEKEND
12:00 p.m. PEOPLE'S PHARMACY
1:00 p.m. THIS AMERICAN LIFE
2:00 p.m. FREAKONOMICS
3:00 p.m. MOUNTAIN STAGE
 Aug 7 Asleep at the Wheel; Tim O'Brien & Jan Fabricius; Ruthie Foster; Leyla McCalla; Carsie Blanton
 Aug 14 The SteelDrivers; Pokey LaFarge; Stephanie Lambring; Seth Glier; Yasmin Williams
 Aug 21 North Mississippi Allstars; Cedric Burnside; Corey Harris; Kate Vargas; Jonah Tolchin
 Aug 28 Joe Lavano Street Band; Tuck & Patti; Holly Cole; Sean Ardoin & Zydekool; Johnny Figo
5:00 p.m. THISTLE & SHAMROCK
6:00 p.m. ALL THINGS CONSIDERED
7:00 p.m. CALIFORNIA SYMPHONY
 Aug 7 BEETHOVEN: Coriolan Overture
 VISCONTI: *Tangle Eye*
 BRUCKNER: Symphony No. 6
 Aug 14 BEETHOVEN: The Creatures of Prometheus Overture; Symphony No. 5
 FRANK: *La Centinela y la Paloma* (*The Keeper and the Dove*)
 MAHLER: *Lieder* (*Songs*)
 Aug 21 BERNSTEIN: Overture to *Candide*; Symphonic Dances from *West Side Story*
 BEETHOVEN: Piano Concerto No. 3
 FRANK: Three Latin-American Dances for Orchestra
 Aug 28 BALCH: *Artifacts*, Violin Concerto
 BRUCKNER: Symphony No. 7
9:00 p.m. THE ROMANTIC HOUR
 Aug 7 French Poetry
 Aug 14 A program of American Poetry. Mona is joined by violinist Joshua Bell
 Aug 21 Mona Brings us Poetry of Borges
 Aug 28 Poetry of Ogden Nash
10:00 p.m. WEEKEND PERFORMANCE TODAY
11:00 p.m. MUSIC OUT OF THE NIGHT AND INTO THE MORNING until 5:00 a.m. when **Morning Edition** begins.

Mondays

7:00 p.m. CHICAGO SYMPHONY ORCHESTRA
 Aug 1 ADAMS: *The Chairman Dances* (Foxtrot for Orchestra)
 STRAVINSKY: Violin Concerto in D
 DVOŘÁK: Symphony No. 8 in G
 BRAHMS: Concerto for Violin and Cello in a
 Aug 8 NIELSEN: Helios Overture
 LINDBERG: *Serenades*
 LALO: *Symphonie espagnole* for Violin and Orchestra
 BRAHMS: Symphony No. 4 in e
 Sibelius: *Finlandia*, Op. 26, No. 7
 Aug 15 MOZART: Piano Concerto No. 23 in A
 BRAHMS: Symphony No. 2 in D
 STRAVINSKY: *Rite of Spring*
 Aug 22 DEBUSSY: Symphonic Fragments from *The Martyrdom of Saint Sebastian*
 RAVEL: *Mother Goose Suite*
 LIGETI: Violin Concerto
 DEBUSSY: *La mer*
 RAVEL: *Valses nobles et sentimentales*
 Aug 29 BARBER: Symphony No. 1
 RACHMANINOV: Piano Concerto No. 2 in c
 ELGAR: Variations on an Original Theme (Enigma)
 BERNSTEIN: Prologue, *Tonight, Rumble, and Somewhere* from *West Side Story*
9:00 p.m. PERFORMANCE TODAY
11:00 p.m. MUSIC OUT OF THE NIGHT AND INTO THE MORNING until 5:00 a.m. when **Morning Edition** begins.

Tuesdays

7:00 p.m. NEW YORK PHILHARMONIC
 Aug 2 BARBER: Essay for Orchestra No. 1
 CORIGLIANO: *One Sweet Morning*, for Mezzo-Soprano and Orchestra
 DVOŘÁK: Symphony No. 7
 Aug 9 STRAUSS: *Also sprach Zarathustra*; *Tod und Verklärung*
 HAYDN: Mass in B flat, Hob. XXII:14
 Aug 16 DUKAS: La Péri (fanfare et poème danse)
 BEETHOVEN: Piano Concerto No. 1
 ROUSSEL: Symphony No. 3 in g
 RAVEL: Mother Goose (Ma Mère l'oye)
 Aug 23 PROKOFIEV: Symphony No. 1, "Classical"
 MENDELSSOHN: Violin Concerto
 BEETHOVEN: Mass in D, "Missa solemnis"

Aug 30 VIVALDI: Concerto for Piccolo, Strings, and Cembalo in C, RV. 444
 HINDEMITH: Symphony, "Mathis der Maler"
 MOZART: Concerto for Bassoon and Orchestra in B flat
 PAINE: Symphony No. 2 in A, "In Spring"
9:00 p.m. PERFORMANCE TODAY
11:00 p.m. MUSIC OUT OF THE NIGHT AND INTO THE MORNING until 5:00 a.m. when **Morning Edition** begins.

Wednesdays

7:00 p.m. LOS ANGELES PHILHARMONIC
 Aug 3 NGWENYAMA: *Primal Message*
 ADOLPHE: *Woven Loom, Silver Spindle*
 BEETHOVEN: Symphony No. 7
 Aug 10 ELLINGTON: *Night Creature*; *New World A-Comin'*; *Black, Brown & Beige*; *The River Suite*
 Aug 17 OGONEK: *Cloudline*
 BEETHOVEN: Piano Concerto No. 3
 MENDELSSOHN: Symphony No. 4, "Italian"
 Aug 24 BARTÓK: *Music for Strings, Percussion, and Celesta*
 BJARNASON: *Feast*
 SIBELIUS: Symphony No. 7
 Aug 31 THORVALDSDOTTIR: *Metacosmos*
 PROKOFIEV: Piano Concerto No. 1
 SHOSTAKOVICH: Symphony No. 10
9:00 p.m. PERFORMANCE TODAY
11:00 p.m. MUSIC OUT OF THE NIGHT AND INTO THE MORNING until 5:00 a.m. when **Morning Edition** begins.

Thursdays

7:00 p.m. COLLECTORS' CORNER with HENRY FOGEL
 Aug 4 Simon Barere, Live at Carnegie Hall
 Aug 11 George Szell and the Cleveland Orchestra: The Forgotten Recordings
 Aug 18 Bruno Walter and the NBC Symphony in 1940
 Aug 25 The Art of Ginette Neveu
9:00 p.m. PERFORMANCE TODAY
11:00 p.m. MUSIC OUT OF THE NIGHT AND INTO THE MORNING until 5:00 a.m. when **Morning Edition** begins.

Fridays

7:00 p.m. CONCIERTO
8:00 p.m. FIESTA! With ELBIO BARILARI
 Aug 5 Transatlantic Music
 Aug 12 Two-Hundred Years of Solitude
 Aug 19 Danzón! The Music of Arturo Márquez
 Aug 26 The Prietos: Father and Son in Classical MusicCharpent
9:00 p.m. PERFORMANCE TODAY
11:00 p.m. MUSIC OUT OF THE NIGHT AND INTO THE MORNING until 5:00 a.m. when **People's Pharmacy** begins.

11:00 a.m. WFMT Radio Network Opera
 Aug 6 CHARPENTIER: Les Plaisirs de Versailles & Les Arts Florissants
 LALANDE: Les Fontaines de Versailles and Le Concert d'Esculape
 Aug 13 HANDEL: Almira
 Aug 20 MUSSORGSKY: Boris Godunov
 Aug 27 PUCCINI: Manon Lescaut
3:00 p.m. CLASSICAL GUITAR ALIVE
4:00 p.m. MICHAEL JOHNATHAN'S WOOD SONGS OLD TIME RADIO HOUR
 Aug 6 The Po' Ramblin' Boys and Wolfpen Branch
 Aug 13 Scott Cook & Crys Matthews
 Aug 20 The Mastersons/Whitmore Sisters and Tammy Rogers & Thomm Jutz
 Aug 27 Taylor Rae and Jordan Tice
5:00 p.m. E-TOWN
 Every eTown show is taped in front of a live audience and

features performances by many of today's top musical artists.
6:00 p.m. ALL THINGS CONSIDERED
7:00 p.m. SWINGIN' DOWN THE LANE
 Aug 6 Original Cast
 Aug 13 Best Songs of the Century
 Aug 20 This Is Glenn Miller 1
 Aug 27 This Is Glenn Miller 2
8:00 p.m. JAZZ NIGHT
9:00 p.m. JAZZ AT 100
 Aug 6 The Avant-Garde
 Aug 13 The Hard Bop / Avant-Garde Synergy of Andrew Hill
 Aug 20 Joe Henderson
 Aug 27 Miles Davis and the Second Great Quintet
10:00 p.m. DREAMFARM RADIO
11:00 p.m. MUSIC OUT OF THE NIGHT AND INTO THE MORNING until 6:00 a.m. when **Weekend Edition** begins.

Saturdays

8:00 a.m. PLANET MONEY AND HOW I BUILT THIS
9:00 a.m. WAIT WAIT DON'T TELL ME
10:00 a.m. THE BIONEERS: Revolution from the Heart of Nature
10:30 a.m. NEW LETTERS ON THE AIR

FM Radio Week-at-a-Glance

	Sunday	Monday	Tuesday	Wednesday	Thursday	Friday	Saturday	Monday through Friday
5:00	Travel with Rick Steves	Morning Edition	Morning Edition	Morning Edition		Morning Edition	5:00 a.m. People's Pharmacy	Weather: 5:18, 6:18, and 7:18 a.m. Regional News: 5:33, 6:33, and 7:33 a.m.
6:00	Weekend Edition						6:00 a.m. Weekend Edition	
7:00							8:00 a.m. Planet Money & How I Built This	
8:00	With Heart and Voice	Music News & Features	Music News & Features	Music News & Features	Music News & Features	Music News & Features	9:00 a.m. Wait, Wait... Don't Tell Me	8:01 Marketplace Report
9:00	Footlight Parade						10:00 a.m. Bioneers	8:15 Animal Airwaves (MWF) Kindness Moment (Tu, Th)
10:00	Radiolab						10:30 a.m. New Letters	8:20 Nature Notes (Tu) Travelers in the Night (W)
11:00	Fresh Air Weekend with Terry Gross						11:00 a.m. Opera	8:30 Health in a Heartbeat Insight
12:00	People's Pharmacy (R)						2:30 p.m. Nothing Funny About Money (when length of opera permits)	8:45 Weather/News
1:00	This American Life						3:00 p.m. Classical Guitar Alive	9:00 Marketplace Tech Report 9:15 A Southwest Spotlight (F) 9:30 Disability Awareness 9:45 Fitness Minute/EarthDate
2:00	Freakonomics	3:00 p.m. Report from Santa Fe	Best of Knowledge	51 Percent	With Good Reason	2:30 p.m. Says You! 1 Hour Version	4:00 p.m. WoodSongs	10:00 Weather/News/Regional News 10:15 Engines of Our Ingenuity 10:30 Composers' Datebook 10:45 Author's Corner 11:00 Weather/News 11:15 Melinda's Garden Moment 11:30 The Plant Detective 11:45 Climate Connections
3:00	Mountain Stage	Marketplace					5:00 p.m. E-Town	12:00 Weather/News/Regional News 12:30 Moment in Time 12:35 Great Arts at Eastern (Th) 12:45 People's Pharmacy News (M) Poetry Now (T) A Touch on Nature (W) Medical Discoveries News (Th) Science and the Sea (F)
3:30		All Things Considered						1:00 Weather/News 1:06 Asian View 1:15 Sound Beat 1:30 Loh Down on Science 1:45 StarDate 2:00 Weather/News/Regional News 2:15 Bird Note 2:20 A Southwest Spotlight (W) 2:30 American Storyteller 2:45 90 Second Naturalist / Innovation Now 4:20 Earthdate 4:50 & 5:50 p.m. Weather 5:20 The Plant Detective 6:57 StarDate/Weather 9:00 Weather/News 12:00/3:00 a.m. Weather/News
4:00			All Things Considered	All Things Considered	All Things Considered	All Things Considered		
4:30	Thistle & Shamrock							
5:00	All Things Considered	PBS NewsHour	PBS NewsHour	PBS NewsHour	PBS NewsHour	PBS NewsHour	All Things Considered	
6:00								
7:00	California Symphony	Chicago Symphony Orchestra	New York Philharmonic	Los Angeles Philharmonic	Collectors' Corner	Concierto with Frank Dominguez Fiesta! with Elbio Barilari	Swingin' Down the Lane Jazz Night in America	
8:00								
9:00	The Romantic Hours	Performance Today	Performance Today	Performance Today	Performance Today	Performance Today	Jazz at 100	
10:00	Performance Today						DreamFarm Radio	
11:00	Classical Music Out of the Night until 5:00 a.m.	Classical Music Out of the Night until 5:00 a.m.	Classical Music Out of the Night until 5:00 a.m.	Classical Music Out of the Night until 5:00 a.m.	Classical Music Out of the Night until 5:00 a.m.	Classical Music Out of the Night until 5:00 a.m. when People's Pharmacy begins.	Classical Music Out of the Night until 5:00 a.m. when Travel with Rick Steves	

When to watch from *A to Z*

Channel 3-1 – August 2022

Amanpour and Company – Mondays-Fridays, 10:00 p.m. (except 18th)

American Woodshop – Wednesdays, 10:00 a.m.

America's Heartland – Mondays, 4:00 p.m.; Fridays, 6:00 a.m.

America's Test Kitchen – Saturdays, 3:00 p.m.; Wednesdays, 4:30 p.m.

Antiques Roadshow – Mondays, 9:00 p.m. (except 15th); Tuesdays, 6:00 a.m./3:00 p.m.; Thursdays, 8:00 a.m.; Saturdays, 6:00 p.m. (except 13th; 20th)

Ask This Old House – Fridays, 12:30 p.m.; Saturdays, 1:00 p.m.; Saturdays, 2:00 p.m.

Austin City Limits – Saturdays, 10:00 p.m.

BBC World News America – Mondays-Fridays, 5:30 p.m.

Beyond Your Backyard – Mondays, 3:30 p.m.

By The River – Sundays, 5:30 p.m. (except 14th; 21st)

Canada Files – Thursdays, 6:30 a.m.

Chef's Life – Wednesdays, 1:00 p.m.

Christina Cooks: Back to Cutting Board – Tuesdays, 12:00 noon

Christopher Kimball's Milk Street TV – Thursdays, 12:00 noon

Classical Stretch – Mondays-Fridays, 5:00 a.m./11:00 a.m.

Consuelo Mack Wealthtrack – Sundays, 1:00 p.m. (except 14th, 21st); Tuesdays, 4:00 p.m.

Cook's Country – Saturdays, 3:30 p.m.; Wednesdays, 12:30 p.m.

Creative Living – Thursdays, 9:00 p.m. (except 18th); Fridays, 2:00 p.m.

Crossing South – Wednesdays, 2:30 p.m.; Tuesdays, 7:30 a.m.

Curious Traveler – Mondays, 7:30 a.m.

Daytripper – Mondays, 4:30 p.m.

Ellie's Real Good Food – Tuesdays, 12:30 p.m.

Finding Your Roots – Tuesdays, 9:00 p.m. (except 16th); Wednesdays, 3:00 p.m. (except 17th)

Firing Line – Fridays, 7:30 p.m. (except 19th); Tuesdays, 5:00 p.m.

Fishing Behind the Lines – Tuesdays, 10:30 a.m.

Fit 2 Stitch – Thursdays, 10:30 a.m.

Fons & Porter's Love of Quilting – Thursdays, 9:00 a.m.

Frontline –
 "Ukraine: Life Under Russia's Attack" – Friday, 5th, 9:00 p.m.
 "Afghanistan Undercover" – Friday, 12th, 9:00 p.m.
 "Supreme Revenge: Battle for the Court" – Friday, 26th, 9:00 p.m.

GardenFit – Fridays, 6:30 a.m.

George Hirsch Lifestyle – Wednesdays, 9:00 a.m.

Getting Dot Older – Tuesdays, 8:30 a.m.

Growing Bolder – Tuesdays, 9:00 a.m.

Gzero World with Ian Bremmer – Fridays, 4:30 p.m.

Happy Yoga with Sarah Starr – Thursdays, 11:30 a.m.

Healthy Minds – Tuesdays, 10:00 a.m. (ends 23rd)

History Detectives – Tuesdays, 2:00 p.m.; Wednesdays, 8:00 a.m.

History with David Rubenstein – Fridays, 5:00 p.m.; Wednesdays, 6:00 a.m.

In The Americas with David Yetman – Mondays, 7:00 a.m.

J Schwanke's Life in Bloom – Sundays, 2:30 p.m. (except 14th, 21st); Wednesdays, 9:30 a.m.

Jacques Pepin: Heart & Soul – Mondays, 8:30 a.m.; Thursdays, 1:30 p.m.

Jazzy Vegetarian – Mondays, 10:30 a.m.

Joy of Painting – Fridays, 10:00 a.m.

Kevin Belton's Cookin' Louisiana – Saturdays, 11:00 a.m.; Mondays, 9:30 a.m.

Knit and Crochet Now – Thursdays, 10:00 a.m.

Legacy List with Matt Paxton – Tuesdays, 7:00 p.m. (ends 9th)

Lidia's Kitchen – Wednesdays, 4:00 p.m.

Lost River Sessions – Fridays, 8:30 a.m.

Make It Artsy – Fridays, 1:00 p.m.

Market to Market – Sundays, 1:30 p.m.

Masterpiece –
 "Grantchester," Season 7 – Sundays, 7:00 p.m. (ends 14th); Mondays, 1:00 p.m. (ends 15th)
 "Guilt," Season 2 (4 Pts.) –
 Sundays, 28th and September 4th, 7:00 p.m./8:00 p.m. (Pts. 1 & 2);
 Mondays, 29th and September 5th, 1:00 p.m./2:00 p.m. (Pts. 1 & 2);
 Sundays, September 11th & 18th, 7:00 p.m./8:00 p.m. (Pts. 3 & 4);
 Mondays, September 12th & 19th, 1:00 p.m./2:00 p.m. (Pts. 3 & 4)

Medical Stories – Tuesdays, 9:30 a.m.; Thursdays, 5:00 p.m.

Motorweek – Saturdays, 1:30 p.m.

Nature – Wednesdays, 9:00 p.m.; Thursdays, 2:00 p.m.; Saturdays, 4:00 p.m.

"Dogs in the Land of Lions" – 10th (W); 11th (Th); 13th (Sa)

"The Bat Man of Mexico" – 24th (W); 25th (Th); 27th (Sa)

"Cuba's Wild Revolution" – 31st (W)

New Mexico in Focus – Sundays, 12:00 noon (except 14th; 21st); Mondays, 6:00 a.m.

Nova – Thursdays, 4:00 p.m.; Fridays, 8:00 p.m.; Saturdays, 11:00 p.m.; Sundays, 4:00 p.m.

"Universe Revealed: Black Holes" – 4th (Th); 5th (F); 6th (Sa); 7th (Su)

Universe Revealed: Big Bang – 11th (Th); 12th (F); 13th (Sa); 14th (Su)

"Eagle Power" – 18th (Th); 20th (Sa); 21st (Su)

"Operation Lighthouse Rescue" – 25th (Th); 26th (F); 27th (Sa); 28th (Su)

Outside: Beyond the Lens – Wednesdays, 7:30 a.m. (ends 10th); Fridays, 3:00 p.m. (ends 12th)

P. Allen Smith's Garden Home – Sundays, 2:00 p.m. (except 14th, 21st); Mondays, 10:00 a.m.

Painting and Travel – Fridays, 10:30 a.m. (begins 12th)

Painting with Paulson – Fridays, 10:30 a.m. (ends 5th)

Pati's Mexican Table – Saturdays, 11:30 a.m.; Mondays, 9:00 a.m.

PBS News Weekend – Saturdays and Sundays, 5:00 p.m.

PBS Newshour – Mondays – Fridays, 6:00 p.m./11:00 p.m.

Pocket Sketching – Fridays, 1:30 p.m.

Quilting Arts – Thursdays, 9:30 a.m.

Red Green Show – Thursdays, 8:00 p.m. (except 18th)

Report from Santa Fe – Saturdays, 5:30 p.m.

Rick Steves' Europe – Mondays, 8:00 a.m.

Samantha Brown's Places to Love – Fridays, 3:30 p.m.; Tuesdays, 7:00 a.m.

Simply Ming – Thursdays, 12:30 p.m. (ends 11th)

Sit and Be Fit – Mondays/Wednesdays/Fridays, 11:30 a.m.

Song of the Mountains – Thursdays, 7:00 p.m. (except 18th); Fridays, 7:00 a.m.

Songs at the Center – Fridays, 8:00 a.m.

Sound On Tap – Saturdays, 9:30 p.m. (except 13th; 20th)

Steven Raichlen's Project Fire – Saturdays, 2:30 p.m.; Wednesdays, 12:00 noon

Story in the Public Square – Thursdays, 6:00 a.m.; Wednesdays, 5:00 p.m.

Taste of Malaysia with Martin Yan – Thursdays, 1:00 p.m.

Texas Parks & Wildlife – Mondays, 5:00 p.m.; Thursdays, 7:00 a.m.

This Old House – Saturdays, 12:00 noon /12:30 p.m.; Fridays, 12:00 noon

Tim Farmer's Country Kitchen – Wednesdays, 9:30 a.m.

To Dine For with Kate Sullivan – Wednesdays, 2:00 p.m.

Travels with Darley – Mondays, 3:00 p.m.; Wednesdays, 7:00 a.m. (begins 31st)

Ultimate Guide to Fly Fishing – Thursdays, 7:30 a.m.

Wai Lana Yoga – Mondays–Thursdays, 5:30 a.m.; Tuesdays, 11:30 a.m.

Washington Week – Fridays, 7:00 p.m. (except 19th); Sundays, 11:00 a.m. (except 14th; 21st)

Weekends with Yankee – Fridays, 2:30 p.m.

Woodsmith Shop – Wednesdays, 10:30 a.m.

Woodsongs – Fridays, 9:00 a.m. (begins 19th)

Yan Can Cook: Spice Kingdom – Thursdays, 12:30 p.m. (begins 18th)

Yndi Yoga – Fridays, 5:30 a.m.

You Should Know – Thursdays, 8:30 p.m. (10:00 p.m. on 18th)

Channel 3-1 Specials

60s Pop, Rock & Soul – Friday, 19th, 7:00 p.m.
Aging Backwards 3 – Sunday, 21st, 12:30 p.m.
Alabama Black Belt Blues – Monday, 8th, 8:00 p.m.
All Creatures Great and Small: The Next Chapter – Sunday, 14th, 5:30 p.m.
America Outdoors – Wednesdays, 7:00 p.m. (ends 10th)
American Experience –
 "The Murder of Emmett Till" – Wednesday, 24th, 7:00 p.m.
 "Fatal Flood" – Wednesday, 24th, 8:00 p.m.
 "Surviving the Dust Bowl" – Wednesday, 31st, 8:00 p.m.
Ancient Remedies with Dr. Josh Axe – Sunday, 21st, 2:00 p.m.
Antiques Roadshow Recut – Saturday, 6th, 8:30 p.m.; Saturday, 13th, 6:00 p.m.
Attachments of Life – Saturday, 13th, 6:30 p.m.
Becoming Trauma Responsive – Tuesday, 30th, 7:00 p.m.
Béla Fleck: My Bluegrass Heart – Thursday, 18th, 7:00 p.m.
Belle Vie – Tuesday, 9th, 8:00 p.m.; Wednesday, 17th, 3:00 p.m.
Boleyns: A Scandalous Family (3 Pts.) – Sundays, 6:00 p.m. (begins 28th); Mondays, 12:00 noon (begins 29th)
Broadchurch 1 – Sundays, 11:00 p.m. (ends 7th)
Broadchurch 2 – Sundays, 11:00 p.m. (begins 28th)
Call of the Ancient Mariner – Wednesday, 3rd, 8:00 p.m.
Chris Botti & The Dallas Symphony Orchestra – Sunday, 21st, 7:00 p.m.
Classical Tahoe – Fridays, 9:00 a.m. (ends 12th)
COBRA – Sunday, 7th, 8:00 p.m.; Sunday, 14th, 9:30 p.m. (end); Mondays, 2:00 p.m. (ends 15th)
Coldplay: Live in São Paulo – Tuesday, 16th, 7:00 p.m.
Craft in America – Tuesdays, 1:00 p.m.
Doctor Q & A – Tuesdays, 10:00 a.m. (begins 30th)
Doo Wop, Pop and Soul Generations – Sunday, 14th, 11:00 a.m.; Saturday, 20th, 6:00 p.m.
Dream of Italy: Travel, Transform and Thrive – Sunday, 28th, 9:00 p.m.
Easy Yoga for Arthritis – Sunday, 14th, 2:00 p.m.; Friday, 19th, 9:00 p.m.
Expedition with Steve Backshall – Thursdays, 3:00 p.m. (ends 11th)
Family Pictures USA (3 Pts.) – Mondays, 7:00 p.m. (begins 22nd)
Frankie Valli & The Four Seasons: A Life on Stage – Saturday, 20th, 8:30 p.m.
Freedom Songs: The Music of the Civil Rights Movement – Wednesday, 17th, 8:30 p.m.
Goes Wrong Show – Saturdays, 9:00 p.m. (except 13th; 20th)
Great American Recipe – Saturdays, 7:00 p.m. (ends 13th); Sundays, 3:00 p.m. (ends 14th)
Great Performances "Vienna Philharmonic Summer Night Concert 2022" – Saturday, 27th, 7:00 p.m.
Great Scenic Railway Journeys – Wednesdays, 7:30 a.m. (begins 17th); Fridays, 3:00 p.m. (begins 19th)

Green Planet – Wednesday, 3rd, 9:00 p.m.; Thursday, 4th, 2:00 p.m.; Saturday, 6th, 4:00 p.m.
Hawaii: Islands of Wonder – Thursday, 18th, 3:00 p.m.
Hog Haven – Wednesday, 10th, 8:00 p.m.
In Their Own Words –
 "Queen Elizabeth II" – Monday, 1st, 12:00 noon
 "Princess Diana" – Sunday, 7th, 6:00 p.m.; Monday, 8th, 12:00 noon
 "Jim Henson" – Monday, 15th, 12:00 noon
James Taylor: One Man Band – Saturday, 13th, 8:30 p.m.; Sunday, 21st, 5:30 p.m.
John Williams: The Berlin Concert – Sunday, 14th, 8:00 p.m.
Kindred Spirits: Artists Hilda Wilkinson Brown and Lilian Thomas Burwell – Monday, 1st, 8:30 p.m.
Last of the Breed – Thursday, 18th, 8:30 p.m.
Leisurama – Monday, 8th, 7:00 p.m.
Man Who Destroyed Oscar Wilde – Monday, 29th, 8:00 p.m.
Nitty Gritty Dirt Band: 50 Years and Circlin' Back – Monday, 15th, 8:30 p.m.
On Broadway – Wednesday, 17th, 7:00 p.m.
One Voice: The Songs We Share – Saturday, 6th, 8:00 p.m.
Pack Horse Librarians of Appalachia – Sunday, 21st, 3:30 p.m.
Patrizio Buanne: Celebration! – Sunday, 21st, 8:30 p.m.
Playas: The Land of Little Lakes – Thursday, 18th, 10:30 p.m.
POV "He's My Brother" – Tuesday, 2nd, 8:00 p.m.
Professor T (UK) – Sunday, 7th, 9:00 p.m.
Pullman: America's Hotel on Wheels – Wednesday, 31st, 7:00 p.m.
Queen Elizabeth's Secret Agents (3 Pts.) – Monday, 22nd, 12:00 noon/1:00 p.m./2:00 p.m.
Real Rail Adventures: Swiss International Hubs – Sunday, 7th, 10:00 p.m.
Rick Steves Best of the Alps – Sunday, 14th, 11:00 p.m.
Rick Steves' European Travel Tips – Sunday, 21st, 11:00 a.m.
Rick Steves Rome – Sunday, 21st, 11:00 p.m.
Roadtrip Nation – Fridays, 4:00 p.m.
Roadtrip Nation: Being Free – Thursday, 25th, 3:00 p.m.
Roy Orbison Forever – Monday, 15th, 7:00 p.m.
Schille – Sunday, 14th, 10:30 p.m.
Slavery by Another Name – Monday, 1st, 7:00 p.m.
Tell Me More – Tuesdays, 4:30 p.m.; Wednesdays, 6:30 a.m.
Toying with Still Life: The Art of Jonathan Queen – Saturday, 27th, 8:30 p.m.
Walter Anderson: Extraordinary Life and Art of The Islander – Monday, 22nd, 8:00 p.m.; Sunday, 28th, 3:00 p.m.
Wild Nevada – Tuesdays, 8:00 a.m.
Wild Weather – Thursday, 18th, 2:00 p.m.; Saturday, 20th, 4:00 p.m.
Women and the Vote – Tuesday, 23rd, 7:00 p.m.
World's Greatest Cemeteries – Thursdays, 9:30 p.m. (except 18th)
World's Greatest Cruises – Wednesdays, 7:00 a.m. (ends 24th)
Write Around The World with Richard E. Grant (3 Pts.) – Sundays, 10:00 p.m. (begins 21st); Tuesdays, 8:00 p.m. (begins 23rd)
Yellowstone Symphony – Tuesday, 16th, 9:00 p.m.

KENW-TV on Cable Companies and Streaming

KENW-TV's main channel, 3-2, is available on the following streaming sources: kenw.org, pbs.org.
 Download the PBS Video App for free, wherever you watch. See the listings at <https://www.pbs.org/pbs-video-app/>.

KENW-TV's 3-1 (High Definition, HD) and 3-2 program channels can be seen on the following cable companies:

Alpine, TX: Channel 12 and Channel 712 (HD), TDS
 Dexter: Channel 3 and Channel 470 (HD), Sparklight
 Ft. Stockton, TX: Channel 6 and Channel 706 (HD), TDS

Hobbs: Channel 3 and Channel 703 (HD), TDS
 Portales: Channel 3, and Channel 510 (HD), Comcast Cable
 Roswell: Channel 3, and Channel 470 (HD), Sparklight

KENW-TV's 3-2 channels can be seen on the following cable companies:

Artesia: Channel 3, PVT
 Carlsbad: Channel 3, TDS
 Clovis: Channel 3, Optimum
 Dexter: Channel 3, PVT
 Eddy County South: Channel 3, TDS
 Eunice: Channel 3, TDS

Farwell: Channel 3, Optimum
 Ft. Sumner: Channel 3, Reach Broadband
 Hagerman: Channel 3, PVT
 Jal: Channel 3, TDS
 Lea County: Channel 3, TDS
 Loving: Channel 3, TDS

Lovington: Channel 3, TDS
 Melrose: Channel 9, Reach Broadband
 Muleshoe, TX: Channel 5, Reach Broadband
 Texico: Channel 3, Optimum
 Tucumcari: Channel 11, Comcast

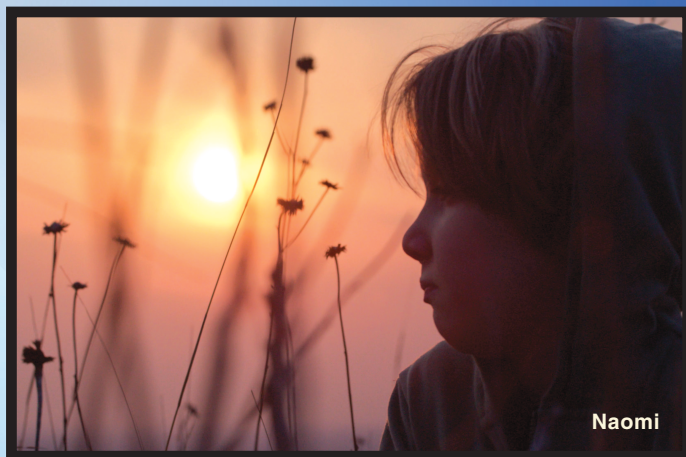


Non-Profit Org.
US Postage
PAID
Slate Group

Becoming Trauma Responsive

Research has indicated that the cognitive skills needed for resiliency are learned. This film highlights the work of trauma experts and educators to help teachers, counselors, and caregivers become trauma-informed and equipped to help students.

Throughout the course of the COVID-19 pandemic, schools across the country reported increases in depression and general anxiety in both students and educators. The pressure strained schools' abilities to meet the social and emotional needs of students. For students affected by trauma and dependent on school services, the elevated stress and uncertainty intensified already difficult situations.



BECOMING TRAUMA RESPONSIVE details the changes two schools and a preschool made to meet the social and emotional needs of their students and staff. Their techniques were substantiated by trauma experts who've spent decades in counseling, therapy and neuroscience.

Sunday, the 28th at 2:00 p.m. (3-2)
Tuesday, the 30th at 10:00 p.m. (3-2)
Tuesday, the 30th at 7:00 p.m. (3-1)