

OCTOBER 2025

# AIRWAVES

THE MONTHLY MEMBERS' MAGAZINE FOR KRWG RADIO & TELEVISION



## RICK STEVES' EUROPE

NM STATE **KRWG**  
PUBLIC MEDIA



## ON THE COVER

### Rick Steves' Europe (Season 13)

Stow away with Rick Steves as he travels to some of his favorite European destinations in RICK STEVES' EUROPE Season 13. This season features 11 half-hour episodes showcasing Europe's remarkable art and architecture, stunning scenery, and rich heritage. The adventure begins in Iceland, where Rick visits the Golden Circle and Ring Road in Reykjavík. Then, he's off to Poland to see the highlights of Kraków, Warsaw, and Gdańsk. In Istanbul, he enjoys Turkish Delights and learns about the sultans of Constantinople. Additional episodes highlight Paris, London, and Italy as well as an unforgettably tasty gourmet barge cruise in Burgundy.

**SATURDAYS AT 7:30PM  
BEGINNING OCTOBER 4**

**NM STATE** **KRWG**  
PUBLIC MEDIA



KRWG.ORG

## UNIVERSITY BROADCASTING

### ADDRESS

MSC TV22 NMSU  
P.O. Box 30001  
Las Cruces, NM 88003-8001

### E-MAIL ADDRESSES

feedback@nmsu.edu  
passport@nmsu.edu

### PHONE NUMBERS

Main: 575.646.2222

### UNDERWRITING

Edmundo Resendez 575.646.4918  
Donna Dollar 575.646.5047

### MEMBERSHIP CONTACTS

Liz Liano 575.646.5794

## Subscribe to our Friday

## NewsWrap!

Join our weekly newsletter to get  
local news, community events and  
updates straight to your inbox!



SCAN  
THIS  
CODE



KRWG.ORG | 90.7 FM

**NM STATE** **KRWG**  
PUBLIC MEDIA



## STREAM LIVE TV NOW

# CONTENTS

## THIS MONTH ON KRWG TV

October Highlights . . . . . 4

## THIS MONTH ON KRWG FM RADIO

Program Guide . . . . . 5

## KRWG TV

Weekday and Weekend Schedule . . . . . 6

Prime Time Schedule . . . . . 7

## RECIPE OF THE MONTH

Risotto with Mushrooms  
(Risotto con Funghi). . . . . 16

## THE COMPANIES WE KEEP

KRWG TV & FM Underwriters . . . . . 20

## NEW PROGRAM FEATURES

Coming to KRWG this month . . . . . 23

## MISSION STATEMENT

*The KRWG Public Media Patron Board  
advocates and supports the goals of  
KRWG as ambassadors and volunteers.*

The KRWG staff would like to take this opportunity to thank the following KRWG Patron Board members for their commitment and dedication to our local public broadcasting service.

- Christopher Brown
- Rama Devasthali
- Cassie McClure
- John P. Munoz
- Orlando Padilla
- Nadia Sikes
- Mona Trempe

## KRWG MANAGEMENT STAFF

### ADRIAN VELARDE

General Manager, University Broadcasting

### NANCY HOLGUIN

Director of Fiscal Administration  
& Station Operations

### KC COUNTS

Content Director

### EDMUNDO RESENDEZ

Director of Development

### ANTHONY PORRAS

Chief Broadcasting Technician

### NORMA VECHOT

Programming Manager, KRWG TV

## WHERE TO LISTEN KRWG-FM

90.7 Las Cruces/El Paso  
89.5 Alamogordo  
93.5 Deming  
91.3 Silver City  
91.9 Truth or Consequences  
91.9 Lordsburg

## WHERE TO WATCH KRWG-TV

- 22 Las Cruces/El Paso, Alamogordo
- 22.2 World
- 22.3 24/7 PBS Kids
- 21 & 22 Lordsburg
- 22 & 28 Silver City
- 28 Hatch
- 13 Hillsboro
- 24 Deming
- 29 Deming
- 28 Caballo
- 40 Truth or Consequences
- Cable Channel 2 Las Cruces
- Cable Channel 3 Silver City,  
Alamogordo, Ruidoso
- Cable Channel 4 El Paso (Digital Tier Only)
- Cable Channel 11 Truth or Consequences
- Cable Channel 12 Deming
- Cable Channel 2 Lordsburg

## STREAMING SERVICES:



DIRECTVstream



## THIS MONTH ON KRWG TV



### VELVET (SEASON 2)

When Alberto returns from his honeymoon with Cristina, he is shocked to find that his brother-in-law, Enrique, now is now in control of Velvet. From WALTER PRESENTS, in Spanish with English subtitles.

- THURSDAYS AT 8PM BEGINNING OCTOBER 9

### MAIGRET ON MASTERPIECE

Meet Chief Inspector Maigret as he solves Paris's most complex crimes using unorthodox methods and a fierce sense of justice. To prevail, he must outwit the city's most ruthless criminals while confronting his own troubled past.

- SUNDAYS AT 8PM, OCTOBER 5 - NOVEMBER 9



### THE GOLD ON MASTERPIECE

What began as a routine armed robbery turned into one of the biggest heists in British history. Inspired by true events, this gripping drama uncovers the 1983 Brink's-Mat robbery in London and the decades-long ripple effects that followed.

- SUNDAYS AT 8PM, OCTOBER 5 - NOVEMBER 9





# THIS MONTH ON KRWG FM RADIO



Find more information at  
[WWW.KRWG.ORG/SCHEDULE](http://WWW.KRWG.ORG/SCHEDULE)

	MONDAY – FRIDAY	SATURDAY	SUNDAY
5AM	Morning Edition 5AM-9AM	Classical Music 5AM-6AM	Classical Music 5AM-6AM
6AM		Travel w/Rick Steves 6AM-7AM	Fresh Air Weekend 6AM-7AM
7AM		Commonwealth Club 7AM-8AM	This American Life 7AM-8AM
8AM		Weekend Edition 8AM-10AM	Weekend Edition 8AM-10AM
9AM	Performance Today 9AM-11AM		
10AM		Fresh Air 11AM-12PM	This Old House 11AM-12PM
12PM	Here & Now 12PM-2PM	TED Radio Hour 12PM-1PM	Hidden Brain 11AM-12PM
1PM		American Routes 1PM-3PM	It's Been A Minute/Wild Card 1PM-1:30PM & 1:30PM-2PM
2PM	Intermezzo 2PM-4PM		
3PM	All Things Considered 4PM-7PM	This American Life 3PM-4PM	Wait Wait... Don't Tell Me! 3PM-4PM
4PM		All Things Considered 4PM-5PM	All Things Considered 4PM-5PM
5PM	Fiesta! w/Emily Guerra 7PM-9PM	KRWG News This Week 5PM-6PM	Latino USA 5PM-6PM
6PM		Mountain Stage 6PM-8PM	American Routes 6PM-8PM
7PM	Blues Bytes 8PM-10PM		
8PM		KRWG Jazz 9PM-12AM	Hearts of Space 9PM-10PM
9PM	World Cafe 10PM-12AM		
10PM		Classical Music 12AM-5AM	Classical Music 12AM-6AM
11PM	Classical Music 12AM-5AM		
12AM		Classical Music 12AM-5AM	Classical Music 12AM-6AM
1AM	Classical Music 12AM-5AM		
Health in a Heartbeat   KRWG Community Calendar			
M-F @ 12:04PM & 7:04PM   M-F @ 8:33AM, 10:00AM & 6:19PM			

89.5 FM Alamogordo | 90.7 FM Las Cruces-El Paso | 91.3 FM Silver City | 91.9 FM Truth or Consequences | 91.9 FM Lordsburg | 93.5 FM Deming



# WEEKDAYS

## MONDAYS - FRIDAY

<b>6:00am</b>	Classical Stretch: By Essentrics		Colleen Kelly;
<b>6:30</b>	Yoga in Practice		<b>Thursdays:</b> Trails To Oishii Tokyo;
<b>7:00</b>	Wild Kratts		<b>Fridays:</b> Steven Raichlen's Project
<b>7:30</b>	Weather Hunters		Fire ends 10/10, Kitchen Curious
<b>8:00</b>	Lyla in the Loop		with Vivian Howard begins 10/17
<b>8:30</b>	Carl The Collector	<b>2:30</b>	<b>Mondays:</b> Sara's Weeknight Meals;
<b>9:00</b>	Daniel Tiger's Neighborhood		<b>Tuesdays:</b> Fons & Porter Love of
<b>9:30</b>	Rosie's Rules		Quilting;
<b>10:00</b>	Sesame Street		<b>Wednesdays:</b> The Daytripper;
<b>10:30</b>	Work It Out Wombats!		<b>Thursdays:</b> Baking with Julia;
<b>11:00</b>	Donkey Hodie		<b>Fridays:</b> Pati's Mexican Table
<b>11:30</b>	Pinkalicious & Peterrific	<b>3:00</b>	Alma's Way
<b>12:00pm</b>	Elinor Wonders Why	<b>3:30</b>	Xavier Riddle and the Secret
<b>12:30</b>	Alma's Way		Museum
<b>1:00</b>	Democracy Now!	<b>4:00</b>	Odd Squad
<b>2:00</b>	<b>Mondays:</b> Homemade Live!;	<b>4:30</b>	Arthur
	<b>Tuesdays:</b> Rick Steves' Europe;	<b>5:00</b>	BBC News America
	<b>Wednesdays:</b> Family Travel with	<b>5:30</b>	PBS NewsHour

# WEEKENDS

## SATURDAYS + SUNDAYS

<b>6:00am</b>	Classical Stretch: By Essentrics	<b>6:00am</b>	Classical Stretch: By Essentrics
<b>6:30</b>	Happy Yoga with Sarah Starr	<b>6:30</b>	Wai Lana Yoga
<b>7:00</b>	Mister Rogers' Neighborhood	<b>7:00</b>	DIY Science Time
<b>7:30</b>	Reading League's Reading Buddies	<b>7:30</b>	Cyberchase
<b>8:00</b>	Best of the Joy of Painting	<b>8:00</b>	Report From Santa Fe
<b>8:30</b>	Woodsmith Shop	<b>8:30</b>	To The Contrary with Bonnie Erbé
<b>9:00</b>	American Woodshop	<b>9:00</b>	Washington Week with The Atlantic
<b>9:30</b>	Joseph Rosendo's Steppin' Out	[repeat]	
<b>10:00</b>	In The Americas with David Yetman	<b>9:30</b>	Firing Line with Margaret Hoover
<b>10:30</b>	Daytripper	[repeat]	
<b>11:00</b>	Texas Parks and Wildlife	<b>10:00</b>	Overheard with Evan Smith
<b>11:30</b>	MotorWeek	<b>10:30</b>	Consuelo Mack WealthTrack
<b>12:00pm</b>	Family Plot: Gardening in the Mid-	<b>11:00</b>	KRWG Special Programming
	South	<b>12:00pm</b>	New Mexico In Focus
<b>12:30</b>	Central Texas Gardener	<b>1:00</b>	Native Report
<b>1:00</b>	This Old House	<b>1:30</b>	Continuing the Conversation
<b>1:30</b>	Ask This Old House	<b>2:00</b>	Live From LBJ Library with Mark
<b>2:00</b>	J Schwanke's Life In Bloom	Updegrove	
<b>2:30</b>	Garden Smart	<b>2:30</b>	Finding Your Roots (1hr)
<b>3:00</b>	Cook's Country	<b>3:30</b>	10/5-10/12 Voces American Historia:
<b>3:30</b>	Pati's Mexican Table		The Untold History of Latinos (1hr);
<b>4:00</b>	America's Test Kitchen		10/19-10/26 American Buffalo (2hrs)
<b>4:30</b>	Christopher Kimball's Milk Street		10/12 VOCES (1hr)
	Television		Lucy Worsley Investigates (1hr)
<b>5:00</b>	KRWG Special Programming		
<b>6:00</b>	Outside: Beyond the Lens ends 10/11;	<b>4:30</b>	
	Fork & Hammer begins 10/18	<b>5:30</b>	



## PRIME TIME KRWG TV

The following listings are accurate and complete as of the 15th. Some schedule changes may occur after printing. For updates and more program information, please visit our website at [tv.krwg.org](http://tv.krwg.org)

### WEDNESDAY 1

6:30PM	<b>News 22</b>
7:00	<b>Big Cats 24/7. New Beginnings.</b> The team gets a surprise as a group of young females from the Xudum Pride heads north.
8:00	<b>NOVA. Human: Neanderthal Encounters</b>
9:00	<b>Sacred Planet with Gulnaz Khan.</b> Reclaiming Peru's Glaciers.
10:00	<b>BBC News</b>
10:30	<b>Amanpour &amp; Company</b>
11:30	<b>School of Greatness with Lewis Howes</b>

### THURSDAY 2

6:30PM	<b>News 22</b>
7:00	<b>KRWG Special Programming</b>
8:00	<b>The Marlow Murder Club on Masterpiece. Season 2, Episode 6.</b> Can Judith and Becks catch the killer and save Suzie before it's too late?
9:00	<b>Professor T. The Warrior Gene.</b> Love is in the air, but Jasper has a case to solve when death strikes within the university.

10:00	<b>BBC News</b>
10:30	<b>Amanpour &amp; Company</b>
11:30	<b>History with David Rubenstein. Jeffrey Rosen</b>

### FRIDAY 3

6:30PM	<b>BBC News The Context</b>
7:00	<b>Washington Week with the Atlantic</b>
7:30	<b>Firing Line with Margaret Hoover</b>
8:00	<b>Great Performances. The Magic of Grace Bumbry</b>
9:00	<b>American Masters. Julia Alvarez: A Life Reimagined.</b> Discover the life and work of Julia Alvarez, one of America's most celebrated Latina writers.
11:00	<b>Amanpour &amp; Company</b>

### SATURDAY 4

6:30PM	<b>PBS News Weekend</b>
7:00	<b>Samantha Brown's Places to Love. Montreal, Canada.</b> Samantha takes an evening walking tour of Old Montreal and celebrates the city's history.



## PRIME TIME KRWG TV

7:30	<b>Rick Steves' Europe. <i>Iceland's Reykjavik and the Golden Circle</i></b>
8:00	<b>Epic Train Journeys from Above. <i>The Glacier Express</i>.</b> Explore a feat of engineering as the Glacier Express takes you through the Swiss Alps.
9:00	<b>Austin City Limits. <i>Finneas</i></b>
10:00	<b>Bands of Enchantment. <i>Oliver Wood</i></b>
10:30	<b>The Caverns Sessions</b>
11:00	<b>Recorded Live at Analog</b>

### SUNDAY 5

6:30PM	<b>PBS News Weekend</b>
7:00	<b>Brian and Maggie. <i>Episode 1</i></b>
8:00	<b>Maigret on Masterpiece. <i>Maigret and the Lazy Burglar, Pt 1</i></b>
9:00	<b>The Gold on Masterpiece. <i>To Be King</i></b>
10:00	<b>Annika on Masterpiece. <i>Episode 1</i>.</b> Annika assembles a team to solve murders in the waters around Glasgow and begin their first case.
11:00	<b>Annika on Masterpiece. <i>Episode 2</i>.</b> Annika's teenage daughter, Morgan, gets mixed up with suspects in a revenge slaying.

### MONDAY 6

6:30PM	<b>BBC News The Context</b>
7:00	<b>Antiques Roadshow. <i>Vintage Raleigh 2025 Hour 2</i></b>
8:00	<b>Antiques Roadshow. <i>Vintage Orlando Hour 2</i>.</b> Outstanding items include a Fern Isabel Coppedge oil and a Tiffany Studios mosaic glass inkwell.
9:00	<b>Independent Lens. <i>Cracking The Code: Phil Sharp and the Biotech Revolution</i>.</b> Phil Sharp reveals how his RNA discovery is transforming biology.
10:30	<b>BBC News</b>
11:00	<b>Amanpour &amp; Company</b>

### TUESDAY 7

6:30PM	<b>News 22</b>
7:00	<b>Finding Your Roots. <i>Family Recipes</i>.</b> Henry Louis Gates, Jr. explores the ancestry of notable chefs Jose Andres & Sean Sherman.
8:00	<b>Finding Your Roots. <i>Anchormen</i>.</b> Henry Louis Gates introduces trail-blazing journalists Jim Acosta and Van Jones to their ancestors.
9:00	<b>Frontline</b>
10:00	<b>BBC News</b>
10:30	<b>Amanpour &amp; Company</b>





## PRIME TIME KRWG TV

11:30	<b>Overheard with Evan Smith. <i>Ari Berman</i>.</b> Journalist Ari Berman discusses voter suppression and antidemocratic efforts in America.
-------	---

9:00	<b>Velvet. <i>The Night of the Pins</i>.</b> Alberto is back from his honeymoon in Rome and excited to return to the store.
10:30	<b>BBC News</b>
11:00	<b>Amanpour &amp; Company</b>

### WEDNESDAY 8

6:30PM	<b>News 22</b>
7:00	<b>Big Cats 24/7. <i>Succession</i>.</b> Mathata steps up to feed the pride, and Serami becomes a mother.
8:00	<b>NOVA. <i>Human: Into The Americas</i>.</b> Follow ancient humans' journey into an icy and perilous new land.
9:00	<b>Secrets of the Dead. <i>The Rise &amp; Fall of the Colosseum</i></b>
10:00	<b>BBC News</b>
10:30	<b>Amanpour &amp; Company</b>
11:30	<b>School of Greatness with Lewis Howes</b>

### FRIDAY 10

6:30PM	<b>BBC News The Context</b>
7:00	<b>Washington Week with the Atlantic</b>
7:30	<b>Firing Line with Margaret Hoover</b>
8:00	<b>King of Them All: The Story of King Records.</b> Discover how King Records played a central role in shaping American popular music.
9:00	<b>American Masters. <i>Little Richard: The King and Queen of Rock and Roll</i>.</b> Energy and outrageous defiance. Discover the role Little Richard played in shaping rock music.
11:00	<b>Amanpour &amp; Company</b>

### THURSDAY 9

6:30PM	<b>News 22</b>
7:00	<b>KRWG Special Programming</b>
8:00	<b>Patience. <i>Paper Mountain Girl, Part 1</i>.</b> Detective Bea Metcalf is intrigued when Patience connects a suicide to other cases.

### SATURDAY 11

6:30PM	<b>PBS News Weekend</b>
7:00	<b>Samantha Brown's Places to Love. <i>Oregon RV Trip</i>.</b> An RV road trip throughout the state of Oregon takes Samantha to Hood River and Fossil to Bend.
7:30	<b>Rick Steves' Europe. <i>Iceland's Ring Road</i></b>



## PRIME TIME KRWG TV

8:00	<b>Epic Train Journeys from Above. <i>Canada's Wilderness Railroad</i>.</b> Cross the province of Manitoba with the Winnipeg to Churchill train.
9:00	<b>Austin City Limits. <i>The Marias</i></b>
10:00	<b>Bands of Enchantment. <i>Red Light Cameras</i></b>
10:30	<b>The Caverns Sessions</b>
11:00	<b>Recorded Live at Analog</b>

7:00	<b>Antiques Roadshow. <i>Vintage Phoenix 2025 Hour 1</i></b>
8:00	<b>Antiques Roadshow. <i>Vintage Spokane Hour 1</i>.</b> Fantastic finds include a 1905 Spokane bird's-eye view lithograph and Abraham Lincoln letters.
9:00	<b>POV. <i>A Mother Apart</i></b>
10:30	<b>BBC News</b>
11:00	<b>Amanpour &amp; Company</b>

SUNDAY 12	
6:30PM	<b>PBS News Weekend</b>
7:00	<b>Brian and Maggie. <i>Episode 2</i></b>
8:00	<b>Maigret on Masterpiece. <i>Maigret and the Lazy Burglar, Pt 2</i></b>
9:00	<b>The Gold on Masterpiece. <i>There's Something Going On In Kent</i></b>
10:00	<b>Annika on Masterpiece. <i>Episode 3</i>.</b> Annika sees one of playwright Ibsen's plots play out in a homicide.
11:00	<b>Annika on Masterpiece. <i>Episode 4</i>.</b> An author who has ruined lives has her own ruined-permanently. Blair finds a friend for Morgan.

MONDAY 13	
6:30PM	<b>BBC News The Context</b>

TUESDAY 14	
6:30PM	<b>News 22</b>
7:00	<b>Finding Your Roots. <i>The Butterfly Effect</i>.</b> Henry Louis Gates, Jr. traces the family trees of actors Debra Messing & Melanie Lynskey.
8:00	<b>American Masters. <i>Marlee Matlin: Not Alone Anymore</i></b>
10:00	<b>BBC News</b>
10:30	<b>Amanpour &amp; Company</b>
11:30	<b>Overheard with Evan Smith. <i>Kirk Goldsberry</i>.</b> Kirk Goldsberry, author of <i>Hoops Atlas</i> , discusses the booming field of basketball analytics.

WEDNESDAY 15	
6:30PM	<b>News 22</b>
7:00	<b>Nature. <i>Dracula's Hidden Kingdom</i>.</b> Discover the region of Romania, Transylvania, and learn some of the mythology surrounding it.



## PRIME TIME KRWG TV

8:00	<b>NOVA. <i>Human: Building Empires.</i></b> Explore how the rise of agriculture and writing leads to an explosion in the human population.
9:00	<b>Secrets of the Dead. <i>Cleopatra's Last Temple.</i></b> An unprecedented discovery could reveal new information about Cleopatra's reign.
10:00	<b>BBC News</b>
10:30	<b>Amanpour &amp; Company</b>
11:30	<b>School of Greatness with Lewis Howes</b>

7:00	<b>Washington Week with the Atlantic</b>
7:30	<b>Firing Line with Margaret Hoover</b>
8:00	<b>Art21: Art in the Twenty-First Century. <i>Between Worlds.</i></b> Discover how art can foster unity amid a world that often feels divided.
9:00	<b>Art &amp; Science Collide</b>
10:00	<b>BBC News</b>
10:30	<b>Amanpour &amp; Company</b>
11:30	<b>Washington Week with the Atlantic</b>

### THURSDAY 16

6:30PM	<b>News 22</b>
7:00	<b>KRWG Special Programming</b>
8:00	<b>Patience. <i>Paper Mountain Girl, Part 2.</i></b> Bea learns more about Patience's difficult past and together they uncover a trail.
9:00	<b>Velvet. <i>Taking Flight.</i></b> When Pedro tells a big lie, he might push Rita into Adolfo's arms.
10:30	<b>BBC News</b>
11:00	<b>Amanpour &amp; Company</b>

### FRIDAY 17

6:30PM	<b>BBC News The Context</b>
--------	-----------------------------

### SATURDAY 18

6:30PM	<b>PBS News Weekend</b>
7:00	<b>Samantha Brown's Places to Love. <i>Hong Kong, China.</i></b> Samantha visits Yuen Po Street Bird Garden and the Kung Wo Beancurd Factory in Hong Kong.
7:30	<b>Rick Steves' Europe. <i>Krakow: Poland's Historic Capital</i></b>
8:00	<b>Epic Train Journeys from Above. <i>Copper Canyon Railway.</i></b> Explore the luxurious El Chepe train and the 100 years it took to build it.
9:00	<b>Austin City Limits. <i>11th Annual Hall of Fame Honors My Morning Jacket</i></b>
10:00	<b>Bands of Enchantment. <i>Rare Americans</i></b>



## PRIME TIME KRWG TV

10:30	<b>The Caverns Sessions</b>
11:00	<b>Recorded Live at Analog</b>

9:00	<b>Independent Lens. <i>Ratified.</i></b> Trace the legal, political, and deeply personal fight to enshrine gender equality in the U.S.
10:30	<b>BBC News</b>
11:00	<b>Amanpour &amp; Company</b>

### SUNDAY 19

6:30PM	<b>PBS News Weekend</b>
7:00	<b>Miss Austen on Masterpiece. <i>Episode 1.</i></b> Why is Cassandra Austen determined to find the letters her sister Jane wrote to her friend Eliza?
8:00	<b>Maigret on Masterpiece. <i>Maigret's Failure, Pt 1</i></b>
9:00	<b>The Gold on Masterpiece. <i>The Consequences Are Minen</i></b>
10:00	<b>Annika on Masterpiece. <i>Episode 5.</i></b> Annika arrives at a murder scene on a party boat. From there, things only get more chaotic.
11:00	<b>Annika on Masterpiece. <i>Episode 6.</i></b> Michael's brother is the prime suspect in his ex's murder. A secret about Michael comes out.

### TUESDAY 21

6:30PM	<b>News 22</b>
7:00	<b>Finding Your Roots. <i>Moving On Up.</i></b> Henry Louis Gates, Jr. dives into the long-lost roots of Sheryl Lee Ralph.
8:00	<b>Breaking The Deadlock</b>
9:00	<b>Frontline</b>
10:00	<b>BBC News</b>
10:30	<b>Amanpour &amp; Company</b>
11:30	<b>Overheard with Evan Smith. <i>Noah Hawley.</i></b> Writer and director Noah Hawley discusses his vast array of projects across film, TV, and books.

### MONDAY 20

6:30PM	<b>BBC News The Context</b>
7:00	<b>Antiques Roadshow. <i>Vintage Phoenix 2025 Hour 2</i></b>
8:00	<b>Antiques Roadshow. <i>Vintage Spokane Hour 2.</i></b> Fantastic finds include a Jon Stefansson landscape oil and a Lonny Frey pro baseball collection.

### WEDNESDAY 22

6:30PM	<b>News 22</b>
7:00	<b>Nature. <i>Walrus: Life On Thin Ice.</i></b> Explore the walrus' evolutionary past and their ability to thrive through the ages.





## PRIME TIME KRWG TV

8:00	<b>NOVA. <i>Ancient Desert Death Trap</i></b>
9:00	<b>Secrets of the Dead. <i>Cracking The Queen's Code</i></b>
10:00	<b>BBC News</b>
10:30	<b>Amanpour &amp; Company</b>
11:20	<b>School of Greatness with Lewis Howes</b>

9:00	<b>Great Performances</b>
11:00	<b>BBC News</b>
11:30	<b>Amanpour &amp; Company</b>

## SATURDAY 25

THURSDAY 23	
6:30PM	<b>News 22</b>
7:00	<b>KRWG Special Programming</b>
8:00	<b>Patience. <i>The Missing Link</i>.</b> A body in a museum exhibit leads the team into the shadowy world of fossil smuggling.
9:00	<b>Velvet. <i>Glory Days</i>.</b> The girls give Ana a makeover for her new role as a designer.
10:30	<b>BBC News</b>
11:00	<b>Amanpour &amp; Company</b>

6:30PM	<b>PBS News Weekend</b>
7:00	<b>Samantha Brown's Places to Love. <i>Greater Palm Springs, CA</i>.</b> Samantha visits the Living Desert Zoo and Gardens, golfs and gets a tutorial in stunt driving.
7:30	<b>Rick Steves' Europe. <i>Poland's Warsaw and Gdansk</i></b>
8:00	<b>Epic Train Journeys from Above. <i>Darjeeling Himalayan Railway</i>.</b> Travel through precarious terrains and five climate zones on the Darjeeling Himalayan Railway.
9:00	<b>Austin City Limits. <i>Charley Crockett/Waxahatchee</i>.</b> ACL showcases Grammy-nominated roots sensations Charley Crockett and Waxahatchee in a radiant hour.
10:00	<b>KRWG Music Spotlight</b>
10:30	<b>The Caverns Sessions</b>
11:00	<b>Recorded Live at Analog</b>

## FRIDAY 24

6:30PM	<b>BBC News The Context</b>
7:00	<b>Washington Week with the Atlantic</b>
7:30	<b>Firing Line with Margaret Hoover</b>
8:00	<b>Being Texan: A Texas Monthly Special</b>



## PRIME TIME KRWG TV

### SUNDAY 26

6:30PM	<b>PBS News Weekend</b>
7:00	<b>Miss Austen on Masterpiece. Episode 2.</b> As Cassandra falls ill, her mind is flooded with memories of difficult times.
8:00	<b>Maigret on Masterpiece. Maigret's Failure, Pt 2</b>
9:00	<b>The Gold on Masterpiece. Vengeance Is Easy, Justice Is Hard</b>
10:00	<b>Annika on Masterpiece.</b> Annika and the team are sent to Edinburgh to investigate the death of a recently released prisoner.
11:00	<b>Annika on Masterpiece.</b> After the recent death of a prisoner, Anika and her team are sent to Edinburgh to investigate.

### MONDAY 27

6:30PM	<b>BBC News The Context</b>
7:00	<b>Antiques Roadshow. Kooky &amp; Spooky.</b> Celebrate Halloween with chilling finds such as a nightmarish Leonora Carrington painting.
8:00	<b>American Experience. Kissinger: Part One</b>
9:00	<b>The American Revolution: An Inside Look.</b> Step behind the scenes of Ken Burns's new film to see how The American Revolution came to life.
10:00	<b>BBC News</b>

10:30	<b>Amanpour &amp; Company</b>
11:30	<b>Firing Line with Margaret Hoover</b>

### TUESDAY 28

6:30PM	<b>News 22</b>
7:00	<b>Finding Your Roots. Finding My Roots.</b> Laurence Fishburne and Henry Louis Gates, JR use detective work to track a family mystery.
8:00	<b>American Experience. Kissinger: Part Two</b>
9:30	<b>The American Revolution: An Inside Look.</b> Step behind the scenes of Ken Burns's new film to see how The American Revolution came to life.
10:00	<b>BBC News</b>
10:30	<b>Amanpour &amp; Company</b>
11:30	<b>Overheard with Evan Smith. Douglas Emhoff.</b> The second gentleman of the United States joins Evan to talk about the 2024 presidential election.

### WEDNESDAY 29

6:30PM	<b>News 22</b>
7:00	<b>Nature. Willow: Diary of a Mountain Lion</b>



## PRIME TIME KRWG TV

8:00	<b>NOVA. <i>Superfloods</i>.</b> Explore superfloods. See why these floods are on the rise around the world.
9:00	<b>Secrets of the Dead. <i>Chasing The Plague</i></b>
10:00	<b>BBC News</b>
10:30	<b>Amanpour &amp; Company</b>
11:30	<b>School of Greatness with Lewis Howes</b>

11:00	<b>Amanpour &amp; Company</b>
-------	-------------------------------

### FRIDAY 31

6:30PM	<b>BBC News The Context</b>
7:00	<b>Washington Week with the Atlantic</b>
7:30	<b>Firing Line with Margaret Hoover</b>
8:00	<b>The State of BBQ: A Teaxs Monthly Special</b>
9:00	<b>Dia De Los Muertos</b>
10:00	<b>BBC News</b>
10:30	<b>Amanpour &amp; Company</b>
11:30	<b>Washington Week with the Atlantic</b>

### THURSDAY 30

6:30PM	<b>News 22</b>
7:00	<b>KRWG Special Programming</b>
8:00	<b>Patience. <i>The Locked Room</i>.</b> A body in a museum exhibit leads the team into the shadowy world of fossil smuggling.
9:00	<b>Velvet. <i>Sewing and Singing</i>.</b> Alberto finds it hard to accept that Ana is in a relationship with Carlos.
10:30	<b>BBC News</b>

**DRAMA  
THAT  
RULES**

PBS + Passport



**PBS**

STREAM NOW



## RECIPE OF THE MONTH

Recipe Courtesy of **Lidia Celebrates America**. Tune in on **KRWG TV** to learn to create the finest desserts and goodies in your own home.

### RISOTTO WITH MUSHROOMS - (RISOTTO CON FUNGHI)

#### INGREDIENTS

- 7 cups chicken stock
- ¼ cup extra virgin olive oil
- 1 ½ cups thinly sliced shallots (about 4 large shallots)
- 1 ½ cups thinly sliced leeks, white and green parts (about 2 medium leeks)
- 2 cups Arborio or other short grain rice
- 1 cup dry white wine
- 1 teaspoon kosher salt, plus more for seasoning
- 2 pounds mixed mushrooms (white, cremini, shiitake, oyster, chanterelle, etc.) thickly sliced
- ¼ cup chopped fresh Italian parsley
- ½ cup grated Grana Padano
- 4 tablespoons butter, cut in bits

#### INSTRUCTIONS

1. **In a medium saucepan, heat** the stock to a simmer.
2. **In a large straight sided skillet over medium heat, add** the olive oil.
3. **When the oil is hot, add** the leeks and shallots.
4. **Cook** and stir, adjusting the heat so they don't color, until the leeks have wilted, about 5 minutes.
5. **Add** the rice and stir to coat in the oil.
6. **Toast** the rice in the oil, stirring, until the edges of the kernels become translucent, about 2 minutes.
7. **Add** the wine, bring to a simmer and cook until the wine is absorbed, about 3 minutes.
8. **Season** with the salt and add enough hot stock to just cover the rice, about 1 ½ cups.
9. **Simmer** gently, stirring, until almost all of the liquid is absorbed.
10. **After the first addition of stock is absorbed, add** the mushrooms and stir to incorporate.
11. **Continue adding** ladlefuls of stock periodically until the rice is creamy but al dente, about 18 minutes from the time you added the wine. [You may not use all of the stock.]
12. **Stir** in the parsley.
13. **Remove** the skillet from the heat and whisk in the grated cheese.
14. **Drop** in the butter and mix well until the rice is creamy and smooth.
15. **Season** with salt if necessary.
16. **Serve** immediately.







Auto | Mortgage Loans | and More  
*Serving our community since 1936*



Join us today at [evolvefcu.org](http://evolvefcu.org)

*/ Simple. Easy. Fast.*

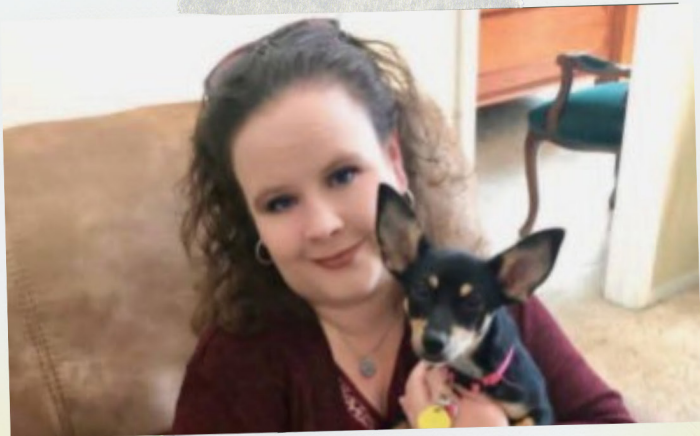


Federally Insured by NCUA



evolve FCU NMLS # 250889





Meet Donna Dollar (& Abby Maye)

## **BUSINESS OUTREACH COORDINATOR**

### **Where did you work before you came to KRWG Public Media?**

Before coming to KRWG Public Media I worked at 101 Gold for almost 20 years.

### **What attracted you to join the KRWG family?**

There are many things that attracted me to KRWG Public Media, as a listener of KRWG I enjoy the fact that we get accurate news and entertainment to enjoy throughout the day, and I am a huge fan of PBS Passport.

### **What have you enjoyed so far during your time at KRWG?**

I have found since I started here that everyone is more than willing to lend a helping hand and a listening ear which is really amazing. It makes the day go by faster and puts a smile on my face. So glad to be here!

### **What are some of your hobbies?**

Outside of KRWG, hobbies that I love to do usually vary on my mood LOL. Most times I enjoy cooking, walking my sweet pup Abby Maye and doing fun activities with my loved ones. I also love to garden and share all of the goodies that pop up from my garden with my loved ones. It's a great way to relax.

Thank you for making  
KRWG Radio's

# Fall Celebration



**on-air Membership Drive a success!**

A special thanks to the following restaurants for feeding our volunteers and staff:

- El Vagon Tacos
- Café de Mesilla
- Smoky Sensations
- La Nueva Casita Café
- The Game (one)
- Andale's Dog House
- Indulgence Bakery & Café
- Lorenzo's Italian Restaurant
- One Stop Convenience Store
- Grilled Cheese Shop
- Roasted Rooster
- Nessa's Café
- Saenz Gorditas
- Valley Pizza
- Lucy's Café

## Thank You!

**KRWG.ORG**



**CALL US NOW**  
OR CALL US LATER

**575.288.1792**  
[organmountainsolar.com](http://organmountainsolar.com)

- SOLAR SYSTEM DESIGN & INSTALLATIONS
- BACKUP BATTERIES & GENERATORS
- SOLAR SYSTEM SERVICE & REPAIR



SCAN ME

**WE HAVE SOME OF THE BEST VIEWS IN TOWN**

# THE COMPANIES WE KEEP

Please join us in thanking & supporting these underwriters for their contributions to KRWG.

## LAS CRUCES, NM

**Amador Health Center** [575] 527-5482

**Baquera Jewelers** [575] 652 - 4084

**Dermatology of Las Cruces** [575] 521-7117

**Evolve Federal Credit Union**  
evolvefcu.org

**Las Cruces Bulletin** [575] 524-8061

**Las Cruces Chamber Ballet**  
lascruceschamberballet.org

**Las Cruces City Museums** [575] 541-2159

**Las Cruces Green Chamber** [575] 323-1575

**Las Cruces Utilities** [575] 528-3511

**Lorenzo's Italian Restaurant** [575] 521-3505

**Malooly's Flooring Company** [575] 523-0633

**Mesilla Valley Concert Band** [575] 680-8126

**Mountain Music** [575] 523-0603

**NM Department of Agriculture** [575] 646-3007

**Nusenda Credit Union** [800] 347-2838

**Organ Mountain Solar & Electric**  
[575] 642-8647

**Pic Quik** [575] 522-0727

**Picture Frame Outlet & Gallery** [575] 526-4048

**Quality of Life** [575] 541-2156

**Rio Grande Theater** [575] 541-2290

**Sonoma Acupuncture Integrative Health** [575] 618-6900

**Spectrum Technologies** [575] 522-6776

**The Cat's Meow** [575] 993-8840

**Toucan Market** [575] 521-3003

**Wagner Financial Services, LLC.** [575] 556-8514

**Weaving for Justice** [575] 621-5999

**Wild Birds Unlimited Nature Shop**  
[575] 523-5489

## LA UNION, NM

**La Vina Winery** [575] 882-7632

**Sierra Vista Growers** [575] 589-2933



## MESILLA, NM

**Adventure Travel and Cruise Center** [575] 521-1400

**Double Eagle Restaurant** [575] 523-6700

**Mesilla Valley Film Society** [575] 524-8287

## SAN RAFAEL, CA

**Hearts of Space** [415] 499-9901

## SILVER CITY, NM

**Gila Conservation Coalition** [917] 279-4686

**Silver City Art Association** [937] 897-1084

**Silver City Mainstreet** [575] 534-1700

**Western New Mexico University** [575] 538-6179

## SUNLAND PARK, NM

**Ardivino's Desert Crossing** [575] 589-0653

# THANK YOU

*You too* can become a KRWG Underwriter  
by contacting **Donna Dollar** at  
**[575] 646-5047**



*"Organ Mountain Solar & Electric proudly supports KRWG for their unwavering dedication to community engagement, quality education, and local support. Underwriting KRWG's programming is an honor, reflecting our shared commitment to a bright and sunny future for all."*

**Corey Asbill | Owner/Operator | Head of Sales**  
**Organ Mountain Solar & Electric**

# THANK YOU

## ORO VISTA PIONEERS

KRWG is honored to acknowledge the following Oro Vista Pioneers who have graciously donated \$1,000 or more annually to KRWG FM & TV. If you would like information about contributing at this level, please call **Edmundo Resendez** at **(575) 646-4918**. If we inadvertently left your name off the list, or if you would like information on how to become an Oro Vista Pioneer, please call **(575) 646-4918**.

Cynthia Buttram | Alamogordo, NM  
Joel and Diana Hamilton | Alamogordo, NM  
Kathleen Schoening | Alamogordo, NM  
Marcia J. Skaar | Alamogordo, NM  
Mary Sittel | Alamogordo, NM  
Nancy L. Gregory | Alamogordo, NM  
Richard and Bette Colvin | Alamogordo, NM  
Wayne Martin | Alamogordo, NM  
Margaret Connealy | Albuquerque, NM  
Wayne Martin | Alamogordo, NM  
Nusenda Credit Union | Albuquerque, NM  
Janet Conrad | Cambridge, MA  
Michael and Elise Sautter | Cape Coral, FL  
David C. Baker | Cloudcroft, NM  
Vantia Pendergrass Leyva | Deming, NM  
Jeanette Maxwell | Edgewood, NM  
Donald Furth and  
Antoinette C. Tropiak-Furth | El Paso, TX  
Mary C. Spalding | El Paso, TX  
Mike Batkin | El Paso, TX  
Roberto Prieto | El Paso, TX  
Peg Crim and Ron Hannan | La Luz, NM  
William Kent Halla | La Mesa, NM  
Aletta T. Wilson | Mesilla Park, NM  
Ellen Rodgers | Mesilla Park, NM  
James J. Landye | Mesilla Park, NM  
Paul Feil | Mesilla Park, NM  
Grace L. Williams | Mimbres, NM  
Lisa De Leon | Organ, NM  
The Robert and Pauline Zimmerman  
Foundation | Overland Park, KS  
Albert R. Bammann | Portal, AZ  
Robert W. Garrett and Mary E. Hotvedt | Pinos  
Altos, NM  
Bret Lapointe | Rio Rancho, NM  
The Benevity Community Impact  
Fund | Safety Harbor, FL  
Jan Archer | San Antonio, TX  
Krystyna Swirydzuk and  
Steven Henry | Santa Fe, NM  
Arthur Thorn | Silver City, NM  
David B Burr | Silver City, NM  
David Rose | Silver City, NM  
David Thomsen | Silver City, NM  
Gary Berg | Silver City, NM  
John and Barbel Irons | Silver City, NM  
Kenneth Keppeler | Silver City, NM  
Margaret M. Sweeti | Silver City, NM  
Ralph S. and Nancy D. Gordon | Silver City, NM  
Susan and David Berry | Silver City, NM  
Tom and Robin Hines | Silver City, NM  
Tom Rolf | Silver City, NM  
Zoey Cronin | Silver City, NM  
John and Kathie Gilbert | Silver City, NM  
Joey Perry | T Or C, NM

Ward Beers | Tularosa, NM  
Kenny Langone | Tucson, AZ  
Sherry K. Mills | Vado, NM

### LAS CRUCES, NM

Al and Nancy Pickett  
Amudhu Gopalan  
Anne Graham and Richard Lee Markman  
Andrew and Kelli Embury  
Arlene Dohr  
Barbara Heavens and John H. Cole  
Beverly Nelson and Kim Allen  
Beverly A. Denney  
Billie Anne Edgington  
Bruce Barker  
Carla and David Thompson  
Carol and James Kaufman  
Carol Sue Smallwood  
Charlene Nickels  
Charles W. Welch  
Charlotte Greenfield  
C.R. and Joy M. Calvert  
Cyndy and Mike Topliff  
Community Foundation of Southern New  
Mexico  
David and Judith Jardine  
Deana Elliott  
Del and Donna Hansen  
Diana Davidson and Paul Deason  
Dinah Lea Jentgen  
Donald and Diane Hurd  
Donald and Patricia Leslie  
Dr. Jill Schroeder  
Douglas and Marcia Driggers  
Don and Betty Lindsey  
Dorothy Taylor  
Dr. Mona Trempe and Mr. Jan Hertzsch  
Dr. Shelley Armitage  
Erwin Albrecht  
Frances F. Williams  
Gordon Butler and Martha Ludeman  
Harry and Diane Bass  
In Memory of Pete Steen  
Janet E. Flores  
Jean and Ken Kawata  
Jennifer Kleitz  
Jennifer L. Taylor  
Jenny Lockwood  
Jessica Cunningham  
Joan T. Gettelfinger  
John Knopp  
John and Barbara Chamberlin  
John C. and Patti Wiles Jr.  
John Henry Carter and Lesley M. McGuire  
John L. Reid

Jon and Laura Haas  
Joseph L. and Eileen K. Vanwie  
Karen Nyenhuis  
Kathrin J. Theisen  
Kay Brilliant  
Leslie Glater  
Margaret Berrier  
Mark and Christine Sanders  
Mark Wayne and Karla Adams  
Martin Small  
Melody Pompa  
Michael and Barbara Mandel  
Michael and Debra Mihalco  
Michael and Diane Lilley  
Monica Torres  
Mr. and Mrs. Hal Wetter  
Neil and Beverly Townsend  
Orlando Padilla  
Paula Casillas  
Paul and Judith Bosland  
Peggy T. Swoveland  
Peter Harben and Margaret McIvory  
Peter and Suzanne Kane  
Peter and Jean Ossorio  
R. Jeffrey Bowers  
Rebecca and Adrian Velarde  
Robert E. and Katherine M. Arneson  
Robert Beyer  
Robert Macklin  
Robert O. and Paula F. Johnson  
Robert (Tito) and Laura Meyer  
Ross and Mary Anne Staffeldt  
Ruth Ingegerd Phillips  
Sandra Carter  
Samantha Cicero  
Sanjay Lahiri and Sharbani Das Gupta  
Shirley Cruise  
Sertoma Club of Las Cruces  
Sidney F. Webb and Rafaelita Chavez  
Susan L. Eidson  
Suzanne and Peter Kane  
Terry Frank  
Thomas C. McConnell  
Thomas A. and Anna R. Price  
Timothy Miller  
Tom and Sandra Hurley  
Tyson Stolte  
William and Corine Breedlove  
William and Lisa Sarette  
William Robinson and Susan Nurrenbern  
Wolfgang and Barbara Schlauch  
Ron Tipton Fund  
Yvonne M. Flores

## YOU TOO CAN BE AN ORO VISTA PIONEER

To learn more, please call  
**Edmundo Resendez** at  
**(575) 646-4918**



# AN UPDATE ABOUT AIRWAVES:

---

As you know, Congress recently rescinded federal funding that was allocated for public media. Many stations are feeling the impacts of this - including KRWG Public Media.

To ensure a sustainable future for KRWG Public Media, we've made the very difficult decision to discontinue the print copy of Airwaves after our December 2025 issue.

However, Airwaves and all the information you've always relied on will still be available as a digital edition every month from our website. We realize this is a big change, but we are searching for efficiencies that will allow us to preserve our core services to the region.

If you have any questions, contact Edmundo Resendez. Our sincerest thanks for your continued support and understanding.

**MRMUNDO@NMSU.EDU**



Support us!  
**DONATE  
YOUR  
VEHICLE**

Call to learn more:  
**866-863-5794**



**Easy Process | Free Pick-up | Tax-deductible\***  
\*Consult your tax advisor



Listen on **KRWG-FM**  
**Saturdays @ 8-10pm**

**KRWG Public Media**  
NMSU MSC TV22  
P.O. Box 30001  
Las Cruces, NM 88003-3001

NONPROFIT ORG  
US POSTAGE  
**PAID**  
DENVER, CO  
PERMIT NO. 5377



with  
**Bill Mitchell**

**Blues Bytes Radio** features the best in contemporary Blues from around the world and the occasional look back at the classics. This show also brings attention to the excellent music created by many of the younger Blues Artists on the scene today.