

Truckee River Rock to McCarran Reach Project Recreation Concepts

Working Group Meeting – July 30, 2025

Truckee River Flood Management Authority

In Collaboration with

J-U-B Engineers & Wood Rodgers



Welcome and Introductions

Speakers:

- **George Robison, PhD, PE -** Truckee River Flood Management Authority, Executive Director & Project Manager
- **Shane K. Dyer, PE, WRS -** J-U-B Engineers, Principal In Charge & Project Manager
- **David Hewitt, RLA -** Wood Rodgers, Landscape Architect
- **Eric Hasty, AICP -** Wood Rodgers, Planner

Meeting Purpose:

An educational seminar to inform the public about the progress of the Rock to McCarran Reach Project regarding recreation and amenities.



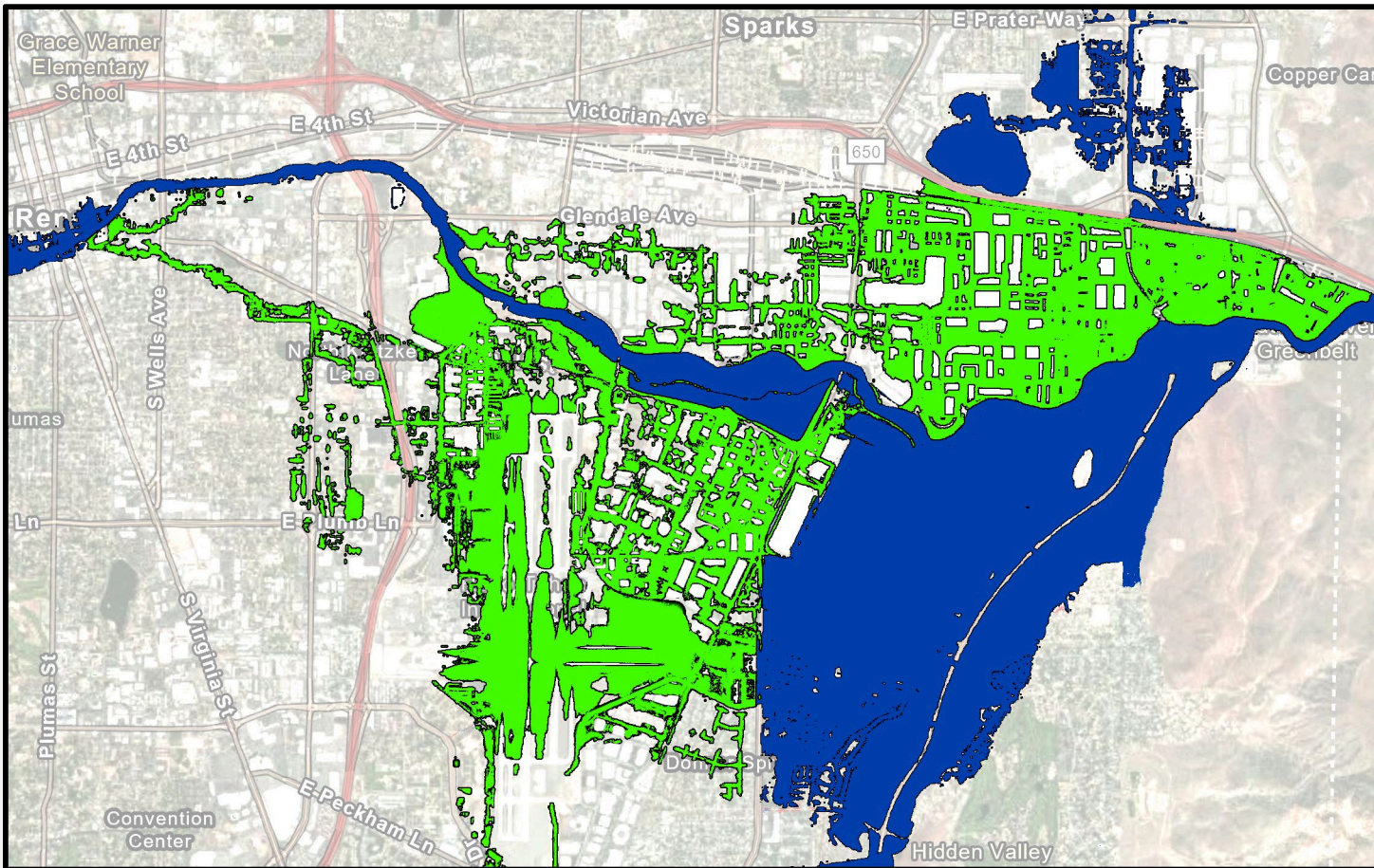
Agenda

- Introduction and Project Need
(George Robison)
- Existing Conditions/Recreation Criteria
(Eric Hasty)
- Conceptual Designs
(David Hewitt)
- Summary and Next Steps
(Team)
- Questions, Input, and Feedback



Introduction & Project Need

MEADOWS FLOOD PROJECT EFFECT



■ AREA KEPT DRY DUE TO PROJECT ■ FLOODED AREA

- What is the Rock to McCarran Reach Project?
- Why is it needed in our community?
- What are the goals and objectives of this project?
 - Multi-beneficial flood control project that includes these three components:
 - Flood Management
 - Ecosystem Restoration
 - Recreation (Future Design)



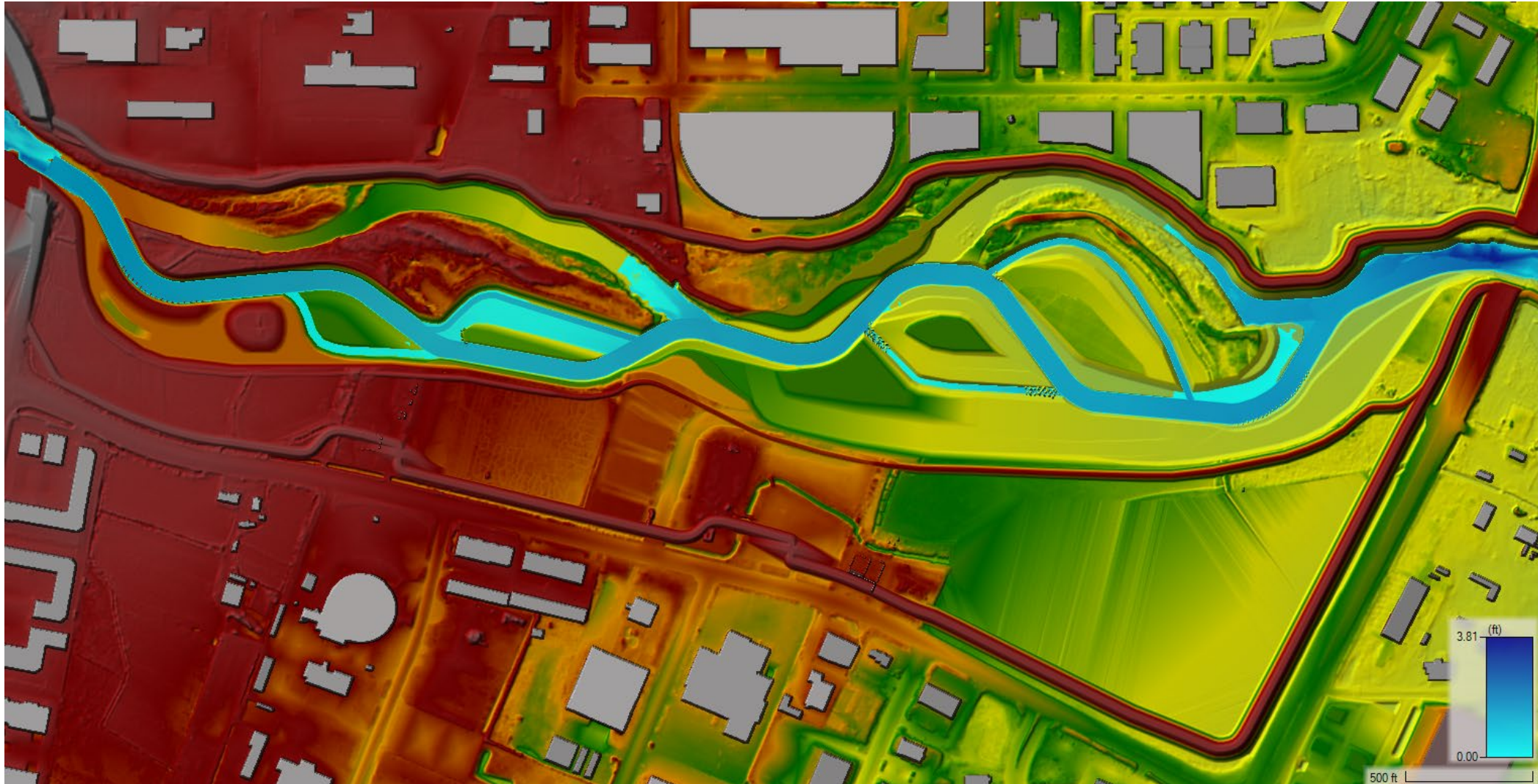
Background

- Alternatives analysis was performed in 2024
 - 8 alternatives studied for overall configuration.
 - The preferred alternative was selected with proposed modifications.
 - TRFMA Board directed the team to proceed to 30% design.
- 5/28/2025 Working Group Meeting
 - The modified preferred alternative was presented to the public.
 - The presentation focused on the flood and environmental aspects of the project.
 - Comments were received.
- Enhanced Recreational Opportunities
 - Separately, two concepts for recreation were being developed.
 - This meeting will present the two conceptual designs and request comments on those designs from those in attendance.



Modified Preferred Alternative

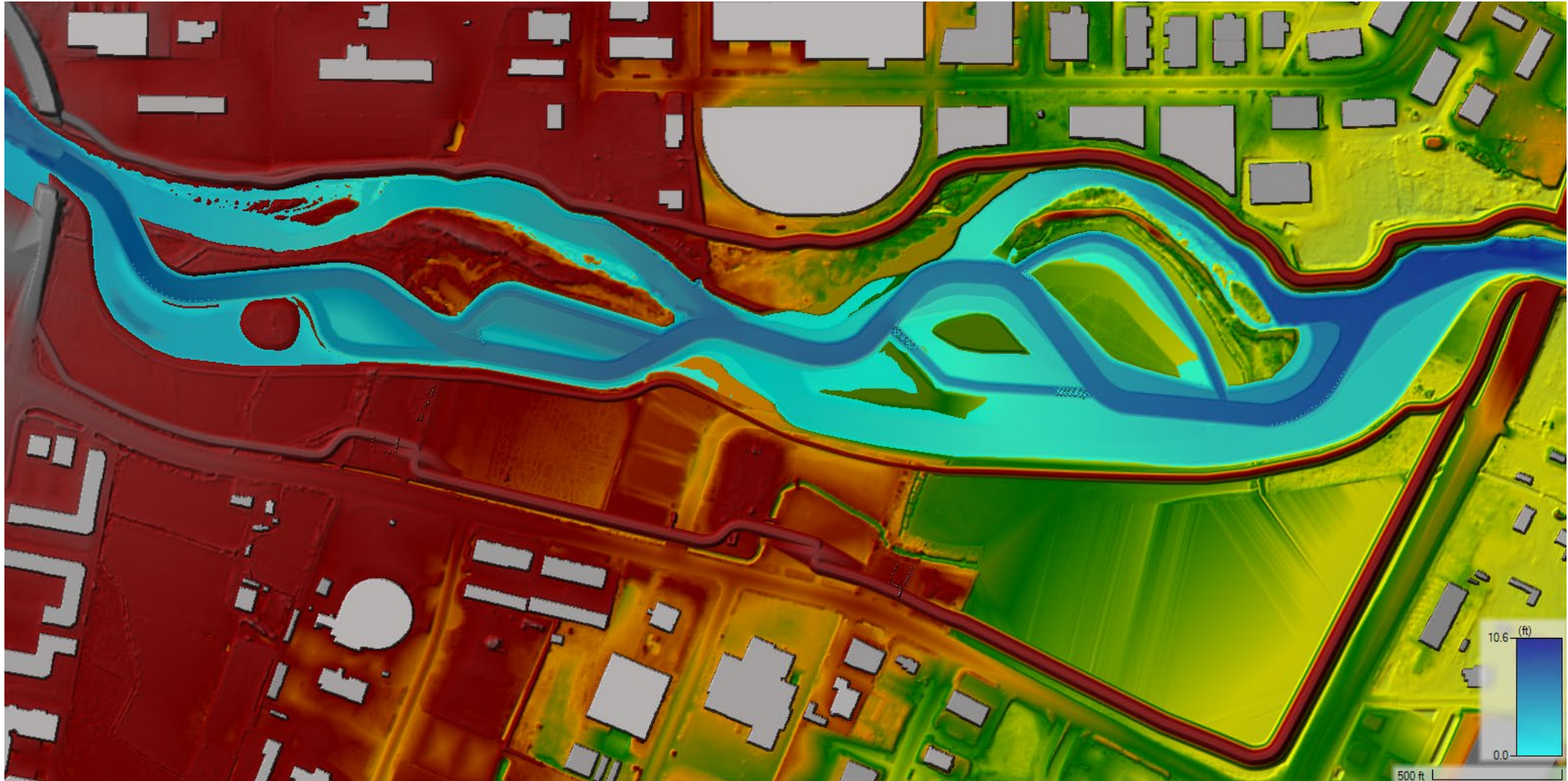
Average Low Flow: 350 cfs





Modified Preferred Alternative

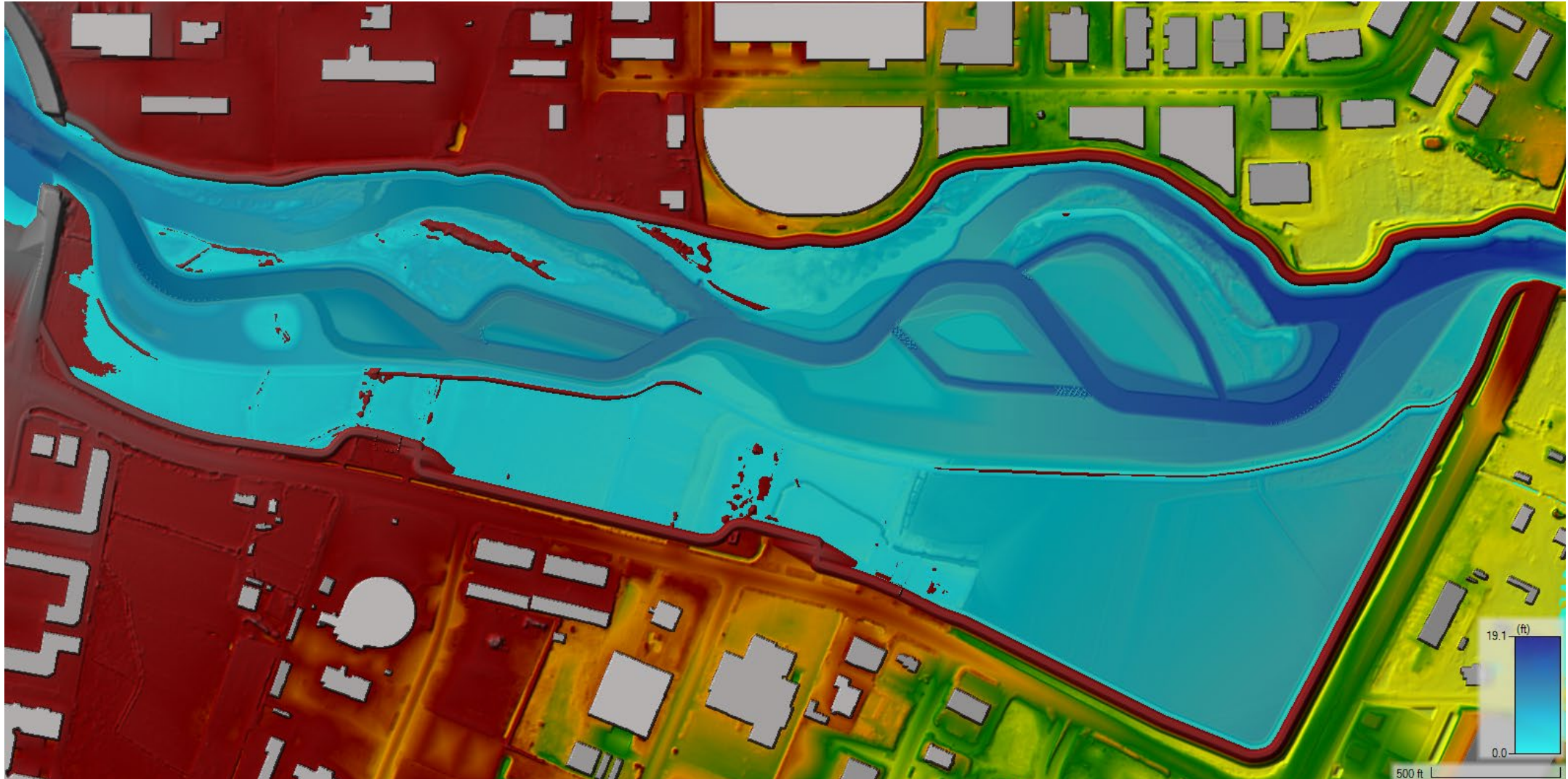
5-year event: 5,949 cfs





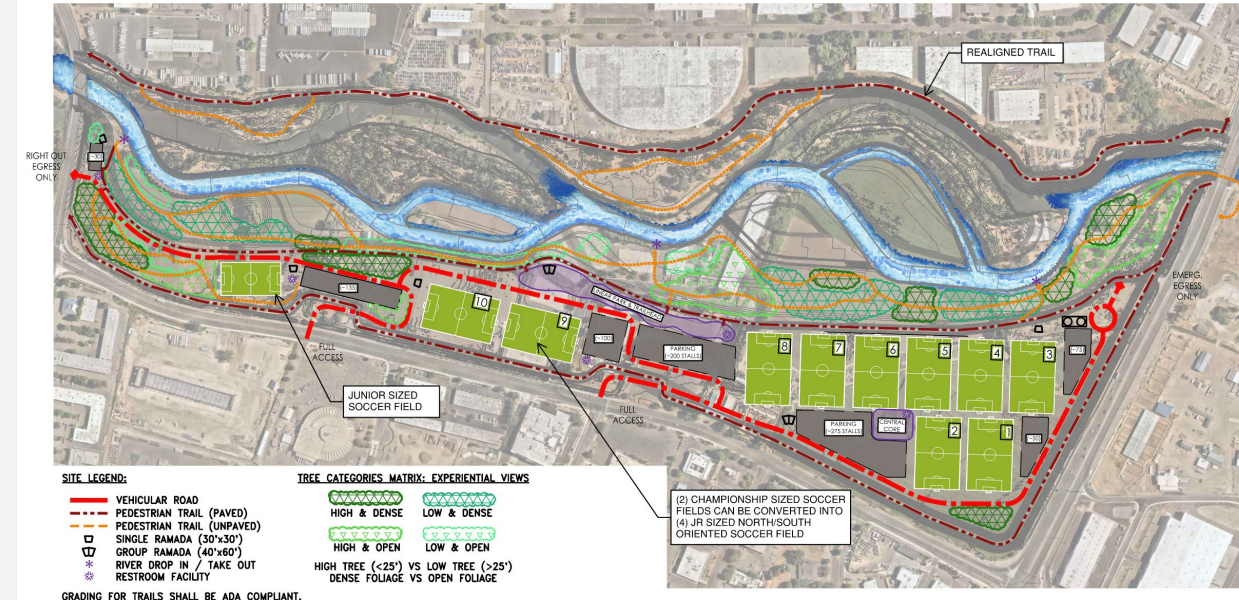
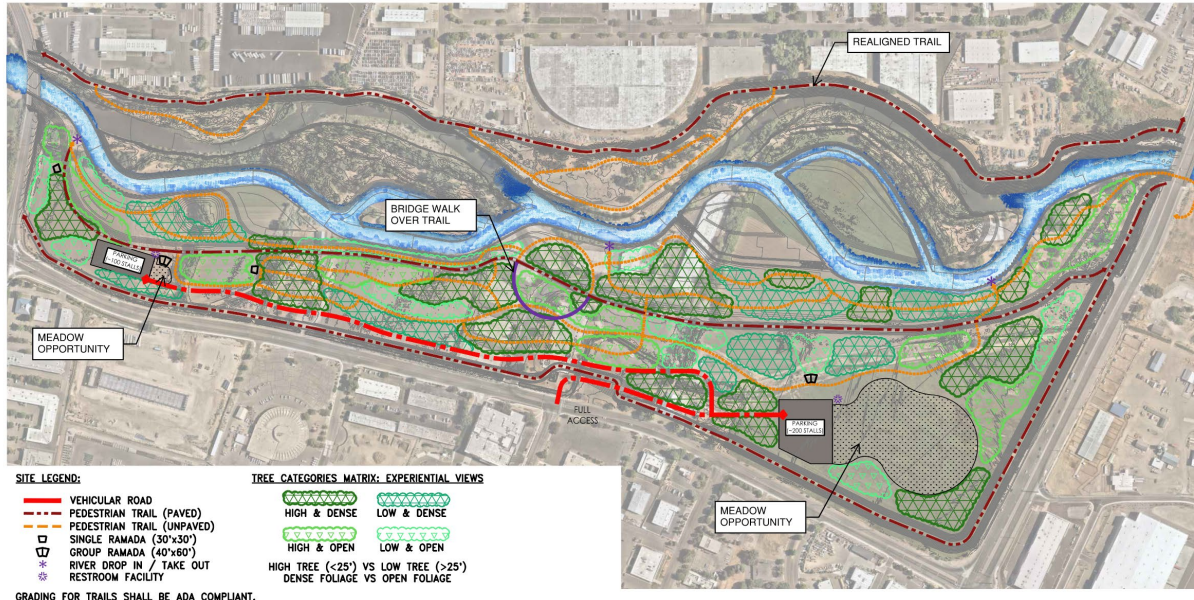
Modified Preferred Alternative

100-year event: 20,734 cfs



Recreation Discussion Overview

- Existing Conditions
- Criteria
- Recreation Concept 1 – Nature Park
- Recreation Concept 2 – Nature Park and Recreation Complex



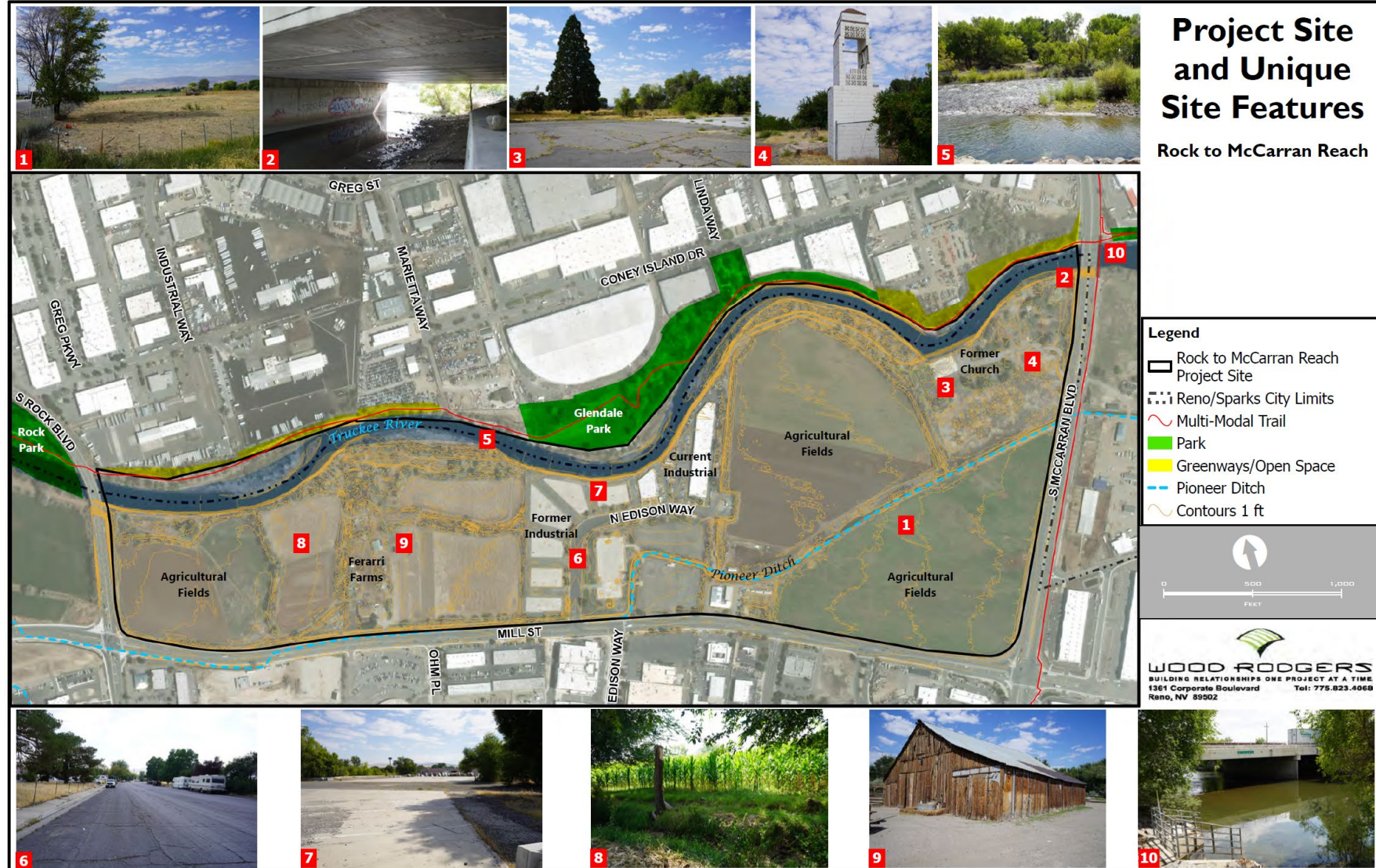
Existing Conditions

NOTABLE OFFSITE FEATURES

- Rock Park (west)
- Glendale Park (north)
- Tahoe-Pyramid Trail (north side of Truckee River)
- Pedestrian Path & Bridge (east side of McCarran Blvd)

NOTABLE ONSITE FEATURES

- Truckee River (5)
- McCarran Blvd Bridge/ Brazilian Bat Colony (2, 10)
- Ferrari Farms (8/9)
- Former Catholic Church/ Bristlecone Treatment Center (3, 4)





Existing Conditions

OTHER RIVER PARK SIZE:

- Oxbow Park: ~25 Ac
- Idlewild Park: ~50 Ac
- Dorostkar Park: ~31 Ac
- Mayberry Park: ~30 Ac
- Rock Park: ~12 Ac
- Wingfield/Bicentennial: ~9 Ac

TOTAL= ~157 Ac

PROJECT SIZE: ~168 Acres



Rancho San Rafael R. Park = ~142 Ac



Project Site and Unique Site Features

Rock to McCarran Reach



Legend

- Rock to McCarran Reach Project Site
- Reno/Sparks City Limits
- Multi-Modal Trail
- Park
- Greenways/Open Space
- Pioneer Ditch
- Contours 1 ft



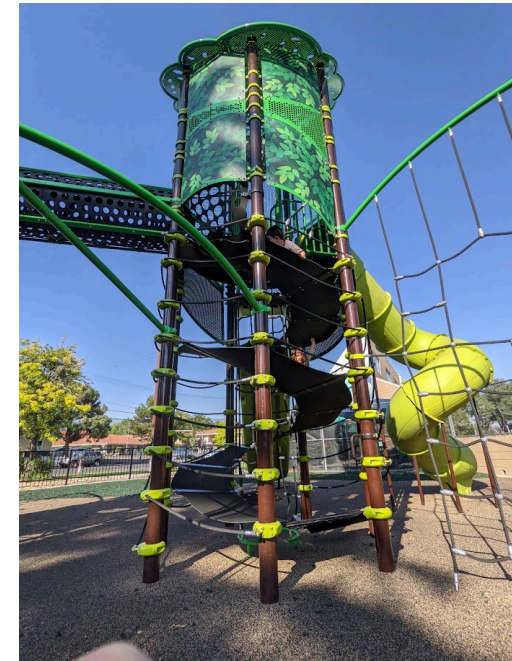
WOOD RODGERS
BUILDING RELATIONSHIPS ONE PROJECT AT A TIME
1361 Corporate Boulevard
Reno, NV 89502
Tel: 775.823.4068



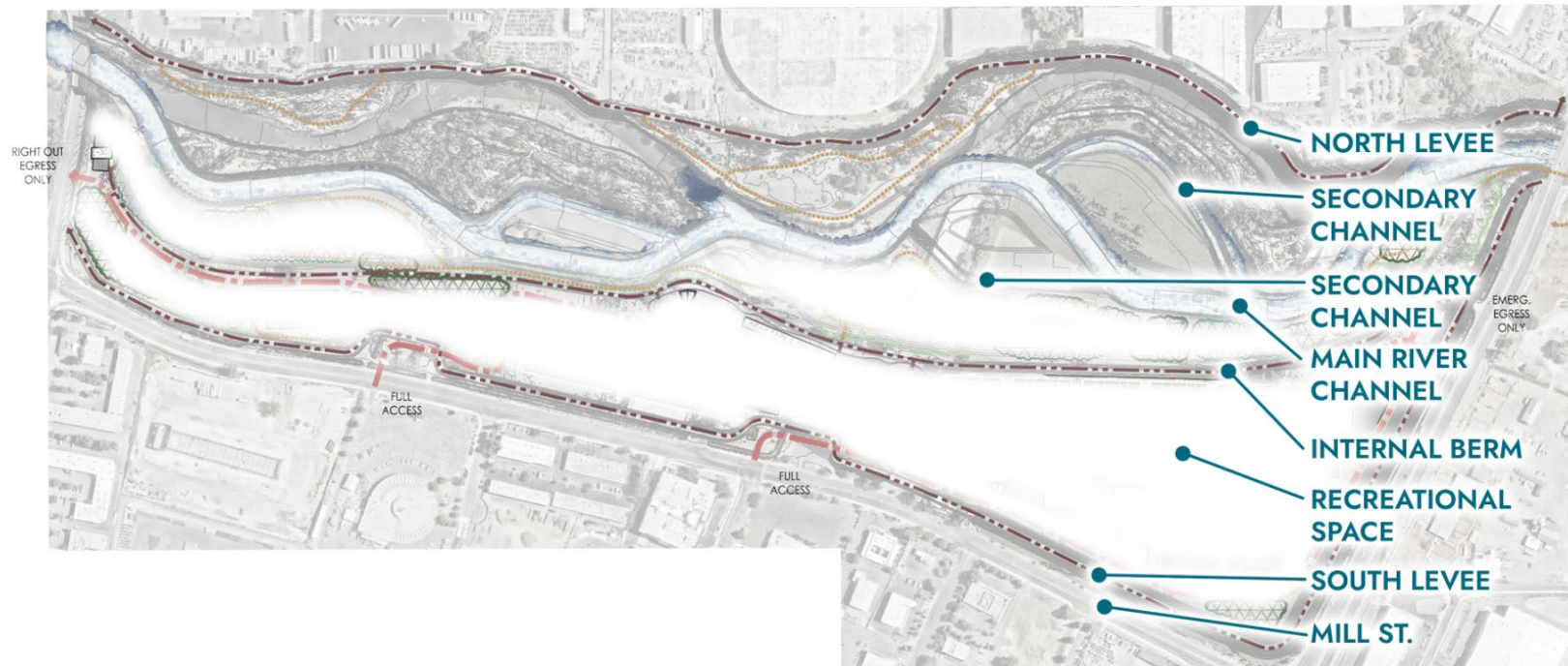
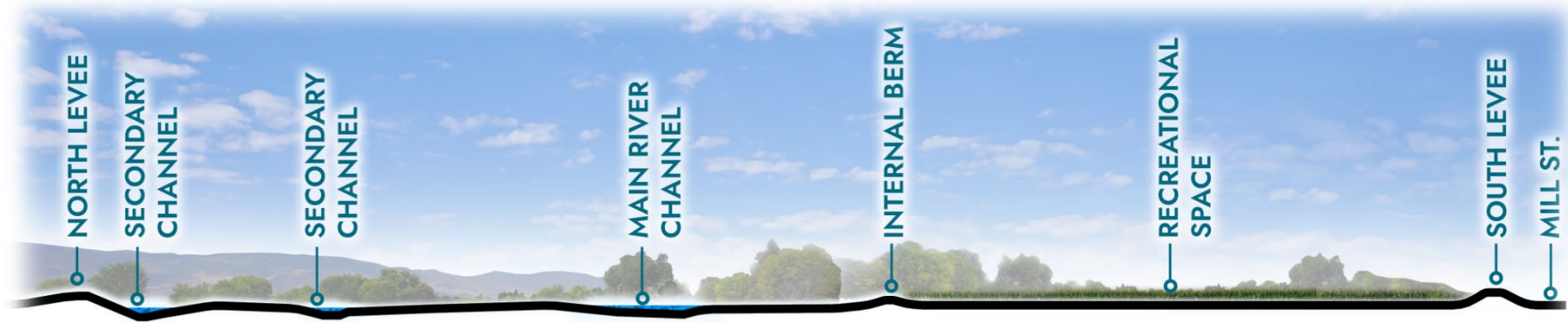
Criteria: Recreation Elements Need to Be Flexible and Flood Resistant

Non-Compatible Amenities:

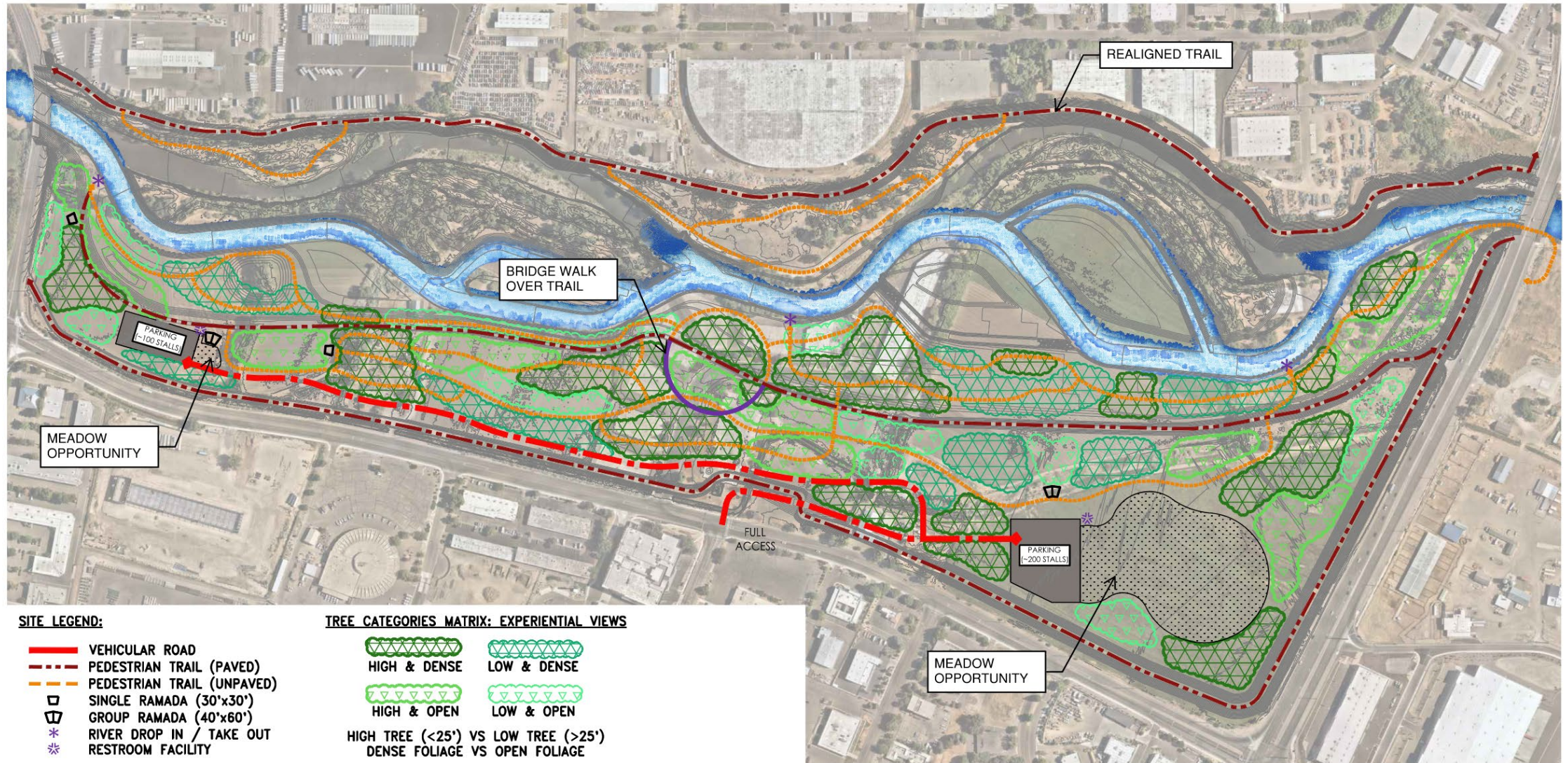
- X Large Playground Structures
- X Hard Sports Courts (Pickleball, Basketball, Etc.)
- X Sand Courts (Volleyball)
- X Skate Parks
- X Permanent Outdoor Amphitheater/Stage
- X Community Centers
- Others?



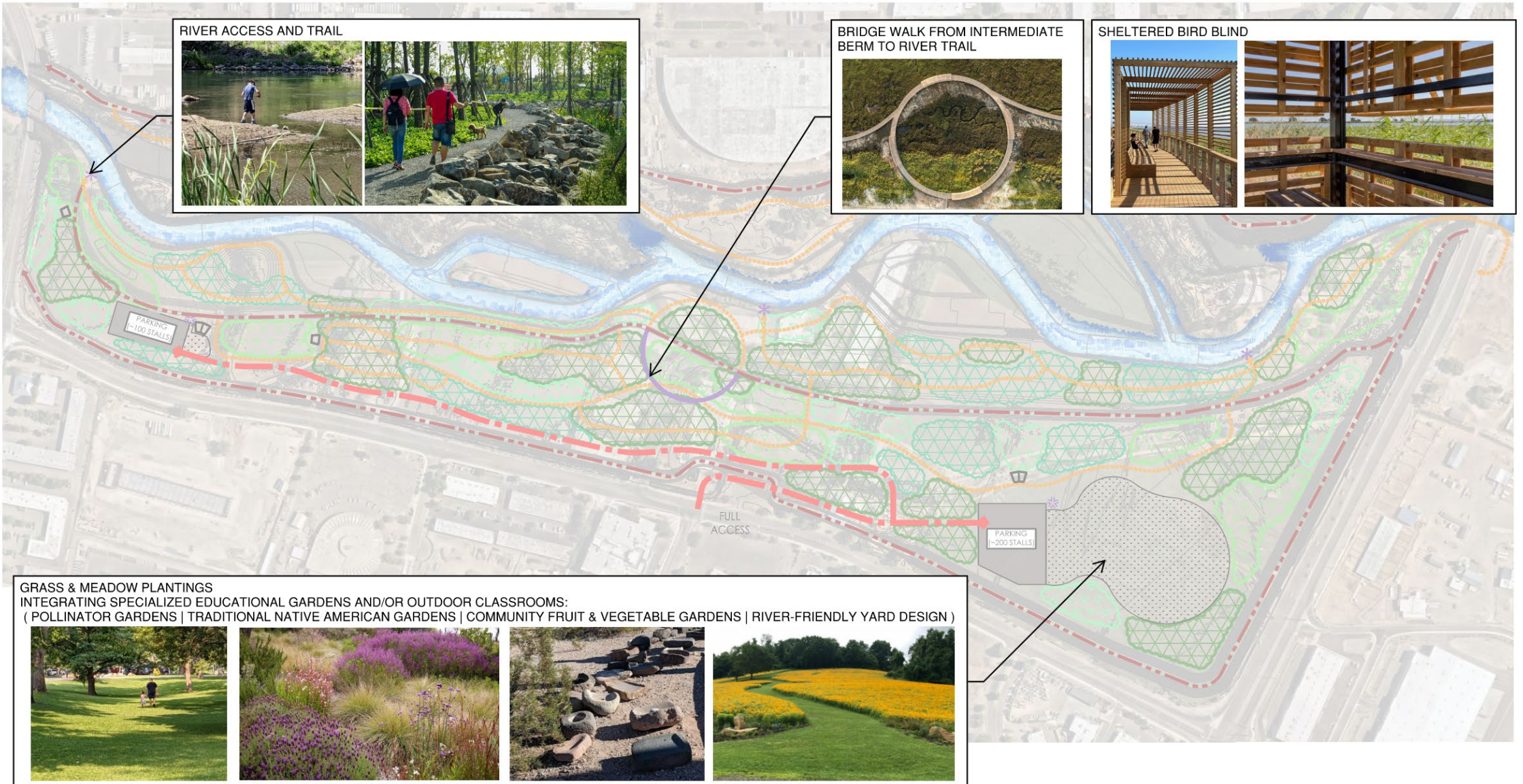
Cross Section



Concept 1: Nature Park



Concept 1: Nature Park



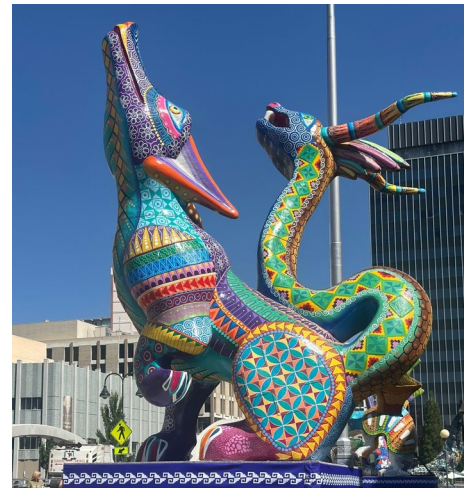


Concept 1: Nature Park

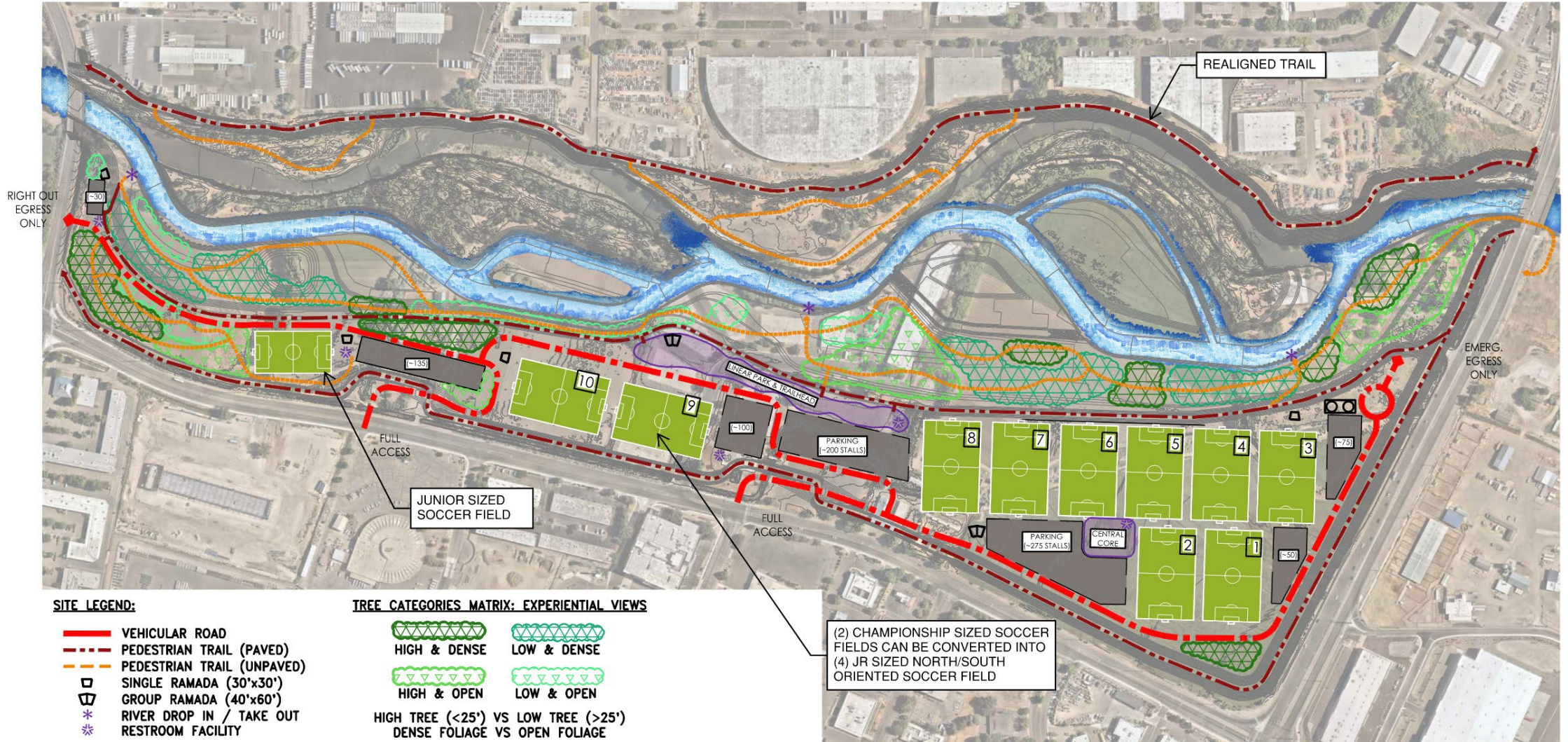


Potential Amenities:

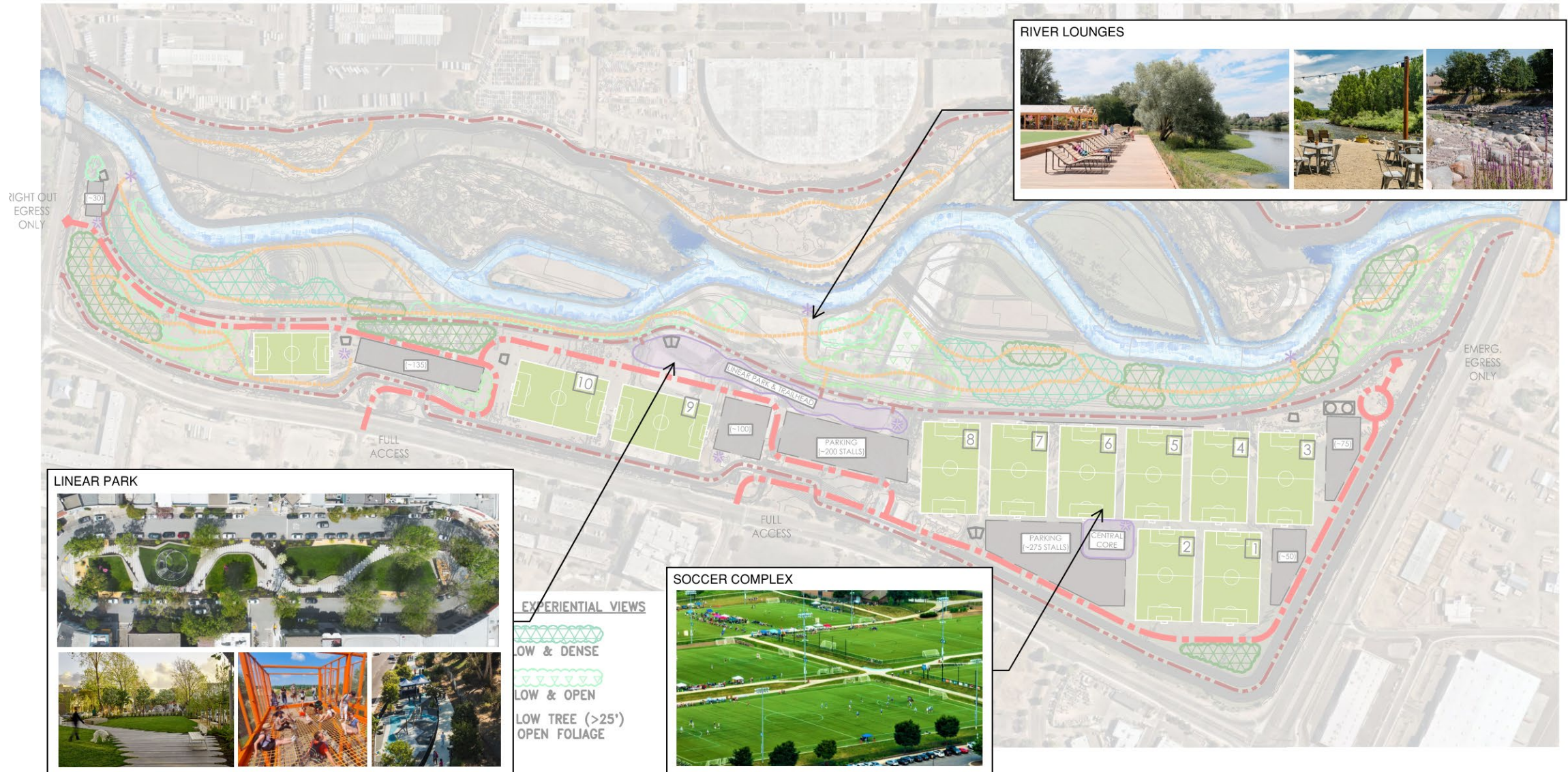
- Nature/Walking Trails
- Natural Meadows
- Arboretums
- Pollinator Gardens
- River Access
- Art Installations
- Picnic Facilities
- Others?



Concept 2: Nature Park & Recreation Complex



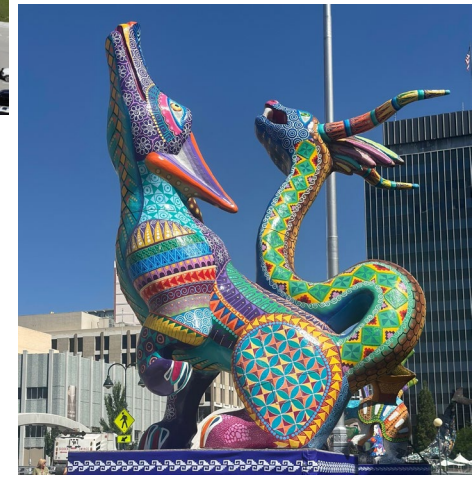
Concept 2: Nature Park & Recreation Complex



Concept 2: Nature Park & Recreation Complex

Potential Amenities:

- Fields (Soccer, Lacross, etc.)
- Natural Playgrounds/Structures
- Food Truck Court/Concession Stands
- Dog Parks
- Grass Outdoor Amphitheater
- Walking Trails
- River Access
- Art Installations
- Picnic Facilities
- Others?





Public Input and Feedback

Open Discussion and Questions

Option to also email TRFMA:
trfma@washoecounty.gov

We Want To
Hear From You!