



MISSOURI

SUMMARY

- Missouri is in the red zone for cases, indicating more than 100 new cases per 100,000 population last week, with the 4th highest rate in the country. Missouri is in the yellow zone for test positivity, indicating a rate between 5% and 10%, with the 7th highest rate in the country.
- Missouri has seen stability in new cases and stability in test positivity over the last week.
- The following three counties had the highest number of new cases over the last 3 weeks: 1. St. Louis County, 2. Jackson County, and 3. Greene County. These counties represent 34.0% of new cases in Missouri.
- 63% of all counties in Missouri have moderate or high levels of community transmission (yellow or red zone), with 37% having high levels of community transmission (red zone).
- During the week of Aug 31 - Sep 6, 11% of nursing homes had at least one new resident COVID-19 case, 22% had at least one new staff COVID-19 case, and 5% had at least one new resident COVID-19 death.
- Missouri had 146 new cases per 100,000 population in the last week, compared to a national average of 74 per 100,000.
- Current staff deployed from the federal government as assets to support the state response are: 65 to support operations activities from FEMA; 7 to support operations activities from ASPR; 2 to support epidemiology activities from CDC; 2 to support operations activities from CDC; and 1 to support operations activities from VA.
- Between Sep 5 - Sep 11, on average, 88 patients with confirmed COVID-19 and 224 patients with suspected COVID-19 were reported as newly admitted each day to hospitals in Missouri. An average of greater than 95% of hospitals reported either new confirmed or new suspected COVID patients each day during this period.

RECOMMENDATIONS

- Establish statewide mask mandate. COVID-19 is being brought into nursing homes through community transmission. Review and improve infection control practices at nursing homes to stop the introduction of COVID-19. Arkansas is a great example in the Heartland where statewide transmission has decreased through mask usage.
- In areas with ongoing high levels of transmission (red and yellow zones), use standard metrics to determine school learning options and capacity limits for bars and indoor dining.
- Develop a plan for increased surveillance of silent community spread by using the Abbott BinaxNOW or antigen tests. Establish weekly surveillance among critical populations to monitor degree of community spread among K-12 teachers; staff working at nursing homes, assisted living, and other congregate living settings; prison staff; and first responders as tests become available.
- In university settings, use wastewater surveillance across campus to identify areas with high viral load for targeted testing. Work with student leaders, including Greek organizations, to establish effective testing strategies to find cases early, prevent spread, and keep students on campus.
- Specific, detailed guidance on community mitigation measures can be found on the [CDC website](#).

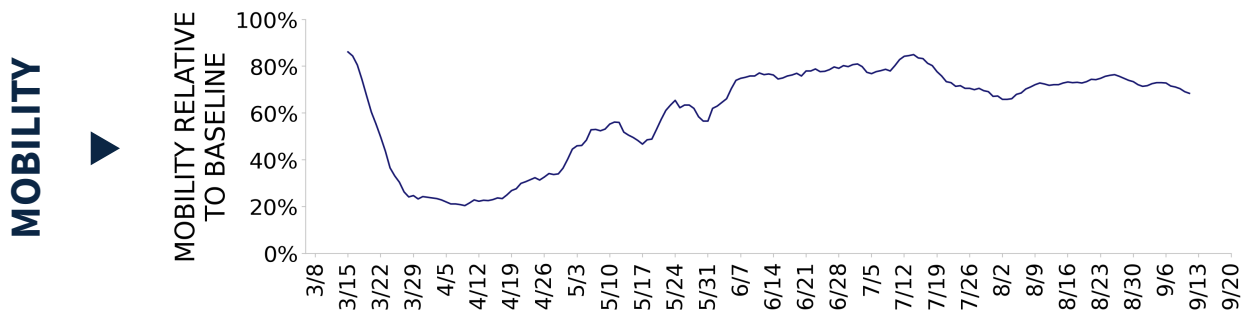




MISSOURI

STATE REPORT | 09.13.2020

	STATE, LAST WEEK	STATE, % CHANGE FROM PREVIOUS WEEK	FEMA/HHS REGION, LAST WEEK	UNITED STATES, LAST WEEK
NEW COVID-19 CASES (RATE PER 100,000)	8,940 (146)	-3.0%	19,048 (135)	243,676 (74)
VIRAL (RT-PCR) LAB TEST POSITIVITY RATE	9.6%	-0.2%*	8.7%	4.8%
TOTAL VIRAL (RT-PCR) LAB TESTS (TESTS PER 100,000)	49,731** (810)	-7.1%**	177,928** (1,258)	4,966,365** (1,513)
COVID-19 DEATHS (RATE PER 100,000)	140 (2)	+44.3%	267 (2)	5,180 (2)
SNFs WITH ≥1 NEW RESIDENT COVID-19 CASE (≥1 NEW STAFF CASE)	11% (22%)	+1%* (+6%*)	8% (19%)	9% (18%)
SNFs WITH ≥1 NEW RESIDENT COVID-19 DEATH	5%	-1%*	3%	4%



* Indicates absolute change in percentage points.

** Due to delayed reporting, this figure may underestimate total diagnostic tests and week-on-week changes in diagnostic tests.

DATA SOURCES – Additional data details available under METHODS**Note:** Some dates may have incomplete data due to delays in reporting. Data may be backfilled over time, resulting in week-to-week changes.**Cases and Deaths:** State values are calculated by aggregating county-level data from USAFacts; therefore, the values may not match those reported directly by the state. Data is through 9/11/2020; last week is 9/5 - 9/11, previous week is 8/29 - 9/4.**Testing:** CELR (COVID-19 Electronic Lab Reporting) state health department-reported data through 9/9/2020. Last week is 9/3 - 9/9, previous week is 8/27 - 9/2.
Mobility: Descartes Labs. This data depicts the median distance moved across a collection of mobile devices to estimate the level of human mobility within a county. The 100% represents the baseline mobility level prior to the pandemic; lower percent mobility indicates less population movement. Data is anonymized and provided at the county level. Data through 9/11/2020.**SNFs:** Skilled nursing facilities. National Healthcare Safety Network. Data are reported separately for cases among residents and staff. Last week is 8/31-9/6, previous week is 8/24-8/30.



MISSOURI

STATE REPORT | 09.13.2020

COVID-19 COUNTY AND METRO ALERTS*

Top 12 shown in table (full lists below)

LOCALITIES IN RED ZONE

LOCALITIES IN YELLOW ZONE

**METRO
AREA
(CBSA)
LAST WEEK**

13

Springfield
Columbia
Jefferson City
St. Joseph
Hannibal
Maryville
Warrensburg
Sikeston
West Plains
Kennett
Rolla
Poplar Bluff

11

St. Louis
Kansas City
Joplin
Farmington
Cape Girardeau
Branson
Sedalia
Lebanon
Kirksville
Moberly
Fort Madison-Keokuk

**COUNTY
LAST WEEK**

43

Greene
Boone
St. Charles
Jefferson
Cole
Franklin
Christian
Nodaway
Buchanan
Livingston
Marion
Johnson

30

St. Louis
Jackson
Jasper
St. Francois
Cape Girardeau
Clay
Cass
Taney
Lincoln
Pettis
New Madrid
Cooper

All Red CBSAs: Springfield, Columbia, Jefferson City, St. Joseph, Hannibal, Maryville, Warrensburg, Sikeston, West Plains, Kennett, Rolla, Poplar Bluff, Marshall

All Red Counties: Greene, Boone, St. Charles, Jefferson, Cole, Franklin, Christian, Nodaway, Buchanan, Livingston, Marion, Johnson, Callaway, Camden, Perry, Scott, Newton, Howell, Madison, Dunklin, Phelps, Webster, Miller, Bollinger, Pemiscot, Polk, Washington, Texas, Saline, Gasconade, Lafayette, Grundy, Clinton, Ozark, Mississippi, Wright, Wayne, Ripley, Moniteau, Oregon, Daviess, Dent, Harrison

All Yellow Counties: St. Louis, Jackson, Jasper, St. Francois, Cape Girardeau, Clay, Cass, Taney, Lincoln, Pettis, New Madrid, Cooper, Platte, Lawrence, Laclede, Butler, Crawford, Warren, Stoddard, Adair, Randolph, Andrew, Ste. Genevieve, Vernon, Pike, Henry, DeKalb, McDonald, Osage, Ray

* Localities with fewer than 10 cases last week have been excluded from these alerts.

Red Zone: Those core-based statistical areas (CBSAs) and counties that during the last week reported both new cases above 100 per 100,000 population, and lab test positivity result above 10%.

Yellow Zone: Those CBSAs and counties that during the last week reported both new cases between 10-100 per 100,000 population, and a lab test positivity result between 5-10%, or one of those two conditions and one condition qualifying as being in the "Red Zone."

Note: Lists of red and yellow localities are sorted by the number of new cases in the last 3 weeks, from highest to lowest. Some dates may have incomplete data due to delays in reporting. Data may be backfilled over time, resulting in week-to-week changes.

DATA SOURCES – Additional data details available under METHODS

Cases and Deaths: State values are calculated by aggregating county-level data from USAFacts; therefore, the values may not match those reported directly by the state. Data is through 9/11/2020; last week is 9/5 - 9/11, three weeks is 8/22 - 9/11.

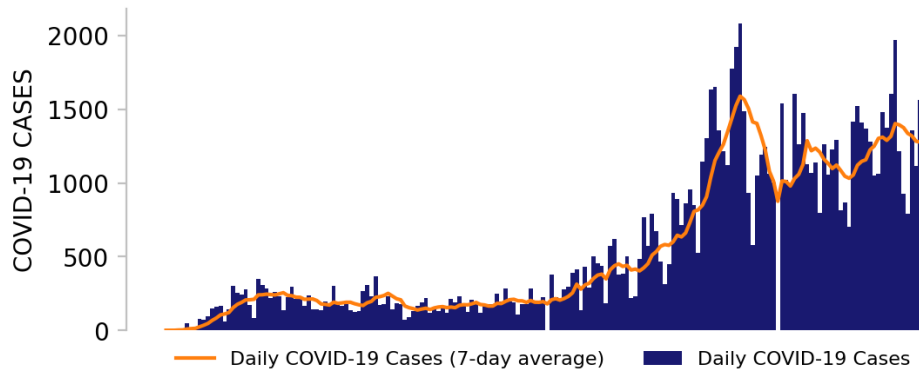
Testing: HHS Protect laboratory data (provided directly to Federal Government from public health labs, hospital labs, and commercial labs) through 9/9/2020. Last week is 9/3 - 9/9.



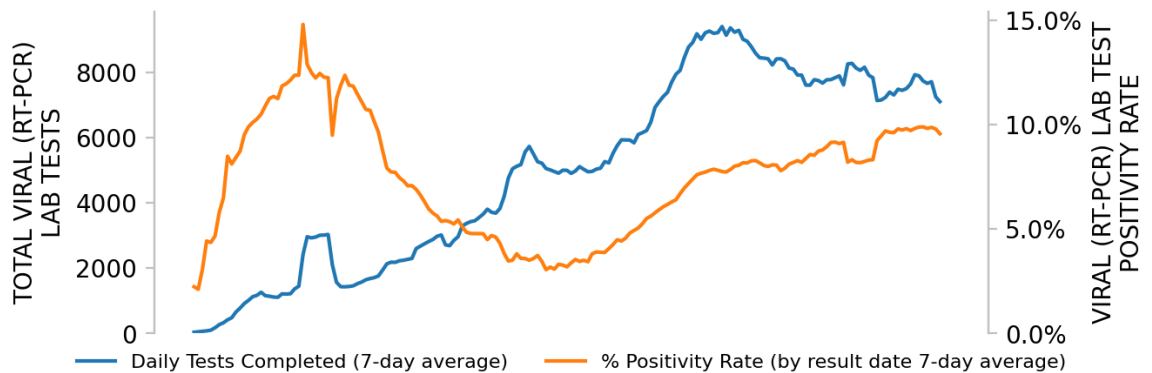
MISSOURI

STATE REPORT | 09.13.2020

NEW CASES

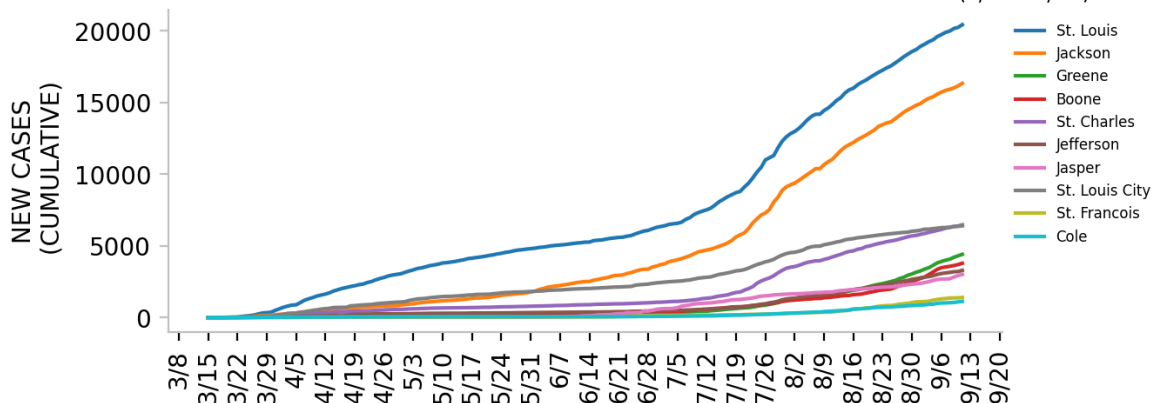


TESTING



Top counties based on greatest number of new cases in last three weeks (8/22 - 9/11)

TOP COUNTIES



DATA SOURCES – Additional data details available under METHODS

Note: Some dates may have incomplete data due to delays in reporting. Data may be backfilled over time, resulting in week-to-week changes.

Cases: State values are calculated by aggregating county-level data from USAFacts; therefore, the values may not match those reported directly by the state. Data is through 9/11/2020.

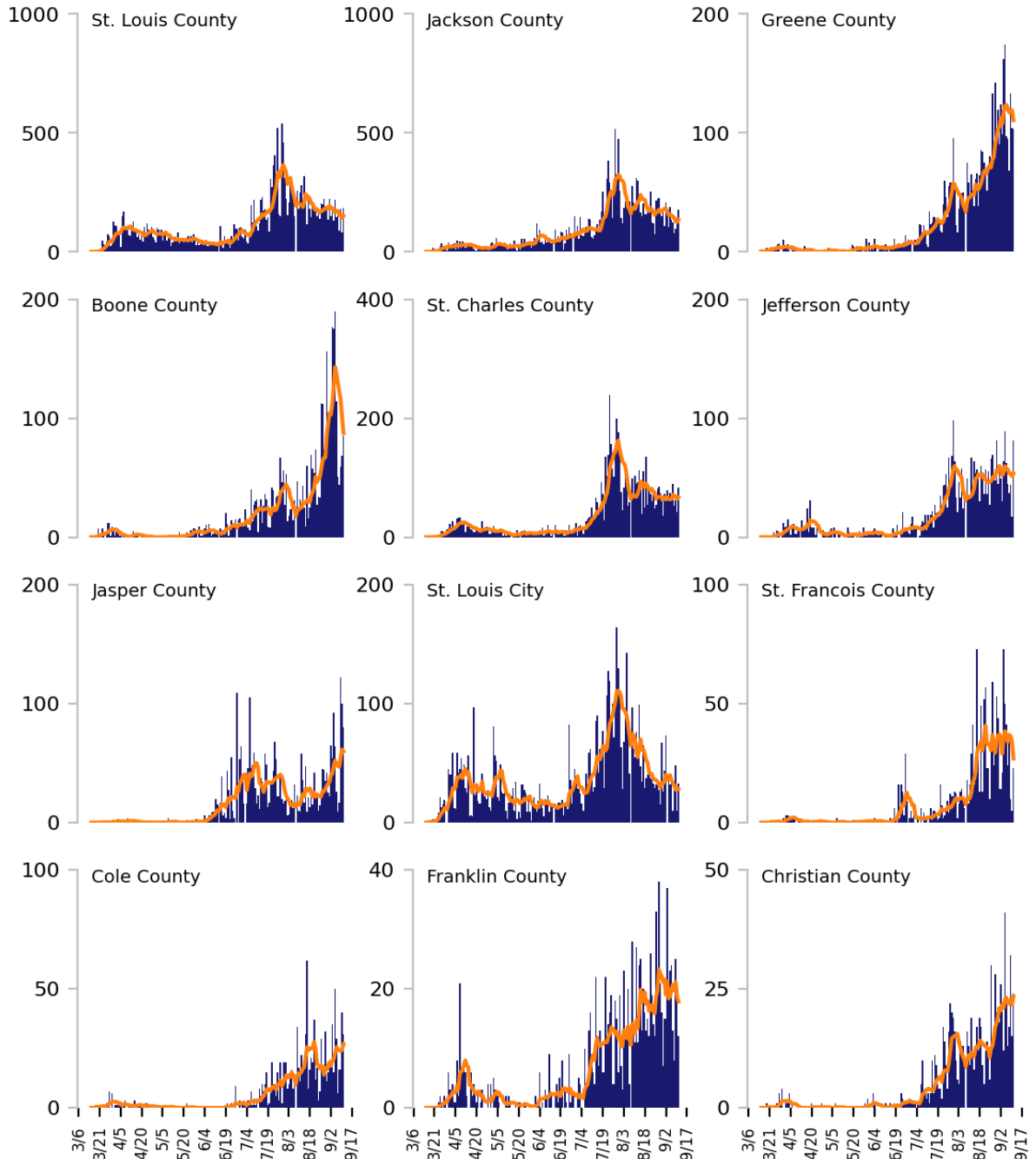
Testing: HHS Protect laboratory data (provided directly to Federal Government from public health labs, hospital labs, and commercial labs) through 9/9/2020.



Top 12 counties based on number of new cases in the last 3 weeks

— Daily COVID-19 Cases (7-day average) ■ Daily COVID-19 Cases

TOTAL DAILY CASES



DATA SOURCES – Additional data details available under METHODS

Cases: State values are calculated by aggregating county-level data from USAFacts; therefore, the values may not match those reported directly by the state. Data is through 9/11/2020. Last 3 weeks is 8/22 - 9/11.

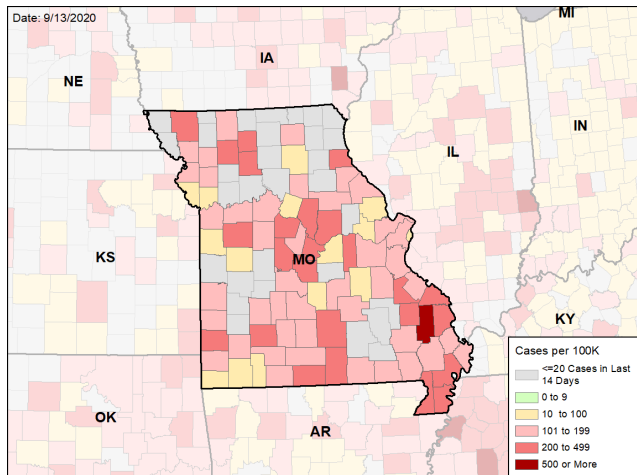


MISSOURI

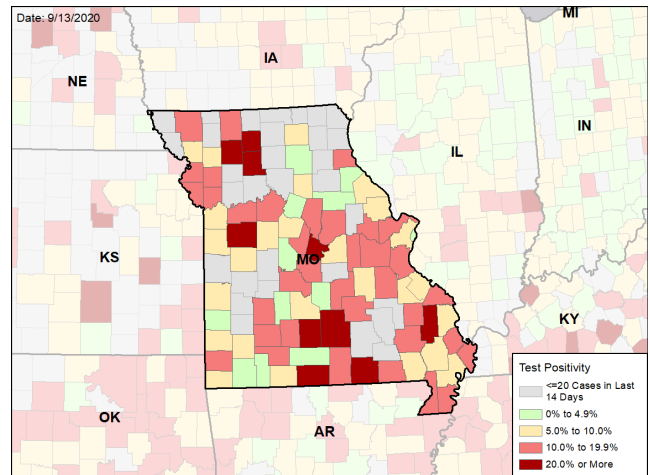
STATE REPORT | 09.13.2020

CASE RATES AND VIRAL LAB TEST POSITIVITY DURING THE LAST WEEK

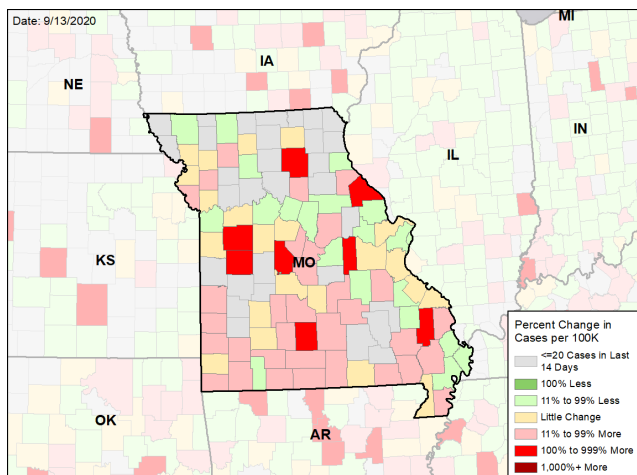
NEW CASES PER 100,000 DURING THE LAST WEEK



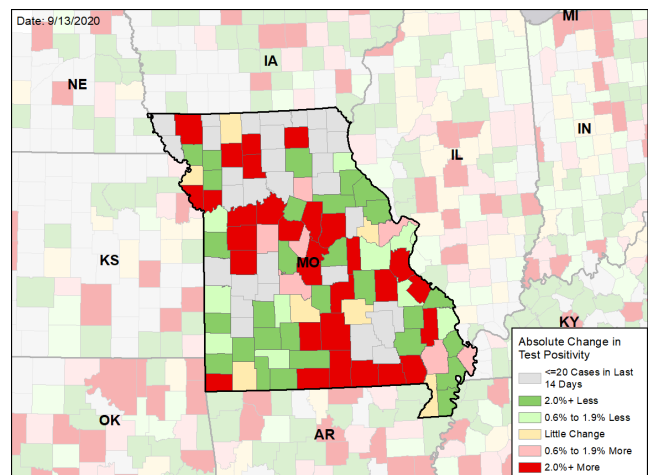
VIRAL (RT-PCR) LABORATORY TEST POSITIVITY DURING THE LAST WEEK



WEEKLY CHANGE IN NEW CASES PER 100K



WEEKLY CHANGE IN VIRAL (RT-PCR) LABORATORY TEST POSITIVITY



DATA SOURCES – Additional data details available under METHODS

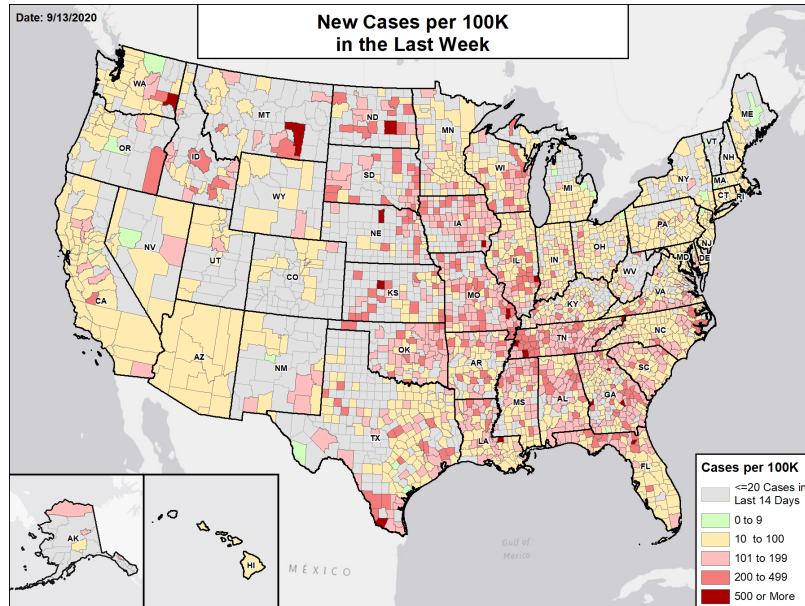
Note: Some dates may have incomplete data due to delays in reporting. Data may be backfilled over time, resulting in week-to-week changes.
Cases: State values are calculated by aggregating county-level data from USAFacts; therefore, the values may not match those reported directly by the state. Data is through 9/11/2020. Last week is 9/5 - 9/11, previous week is 8/29 - 9/4.

Testing: HHS Protect laboratory data (provided directly to Federal Government from public health labs, hospital labs, and commercial labs) through 9/9/2020. Last week is 9/3 - 9/9, previous week is 8/27 - 9/2.

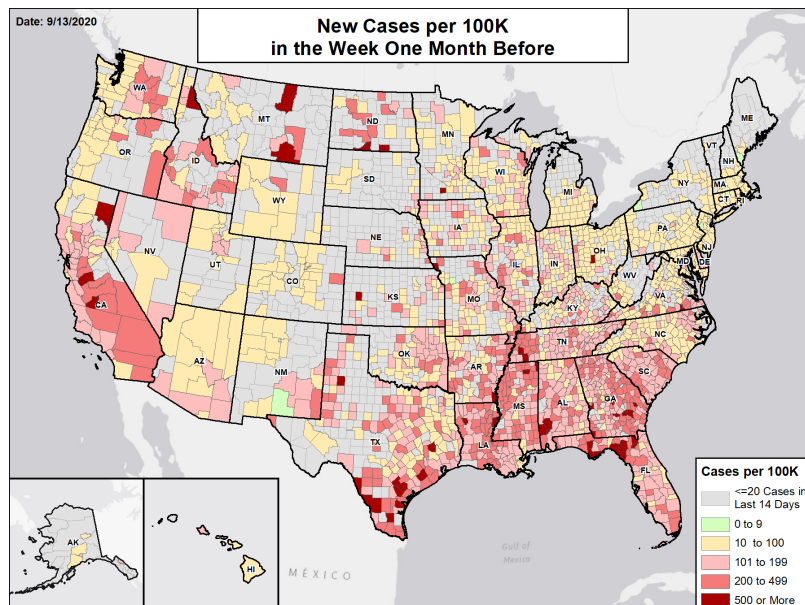


National Picture

NEW CASES PER 100,000 LAST WEEK



NEW CASES PER 100,000 IN THE WEEK ONE MONTH BEFORE



DATA SOURCES

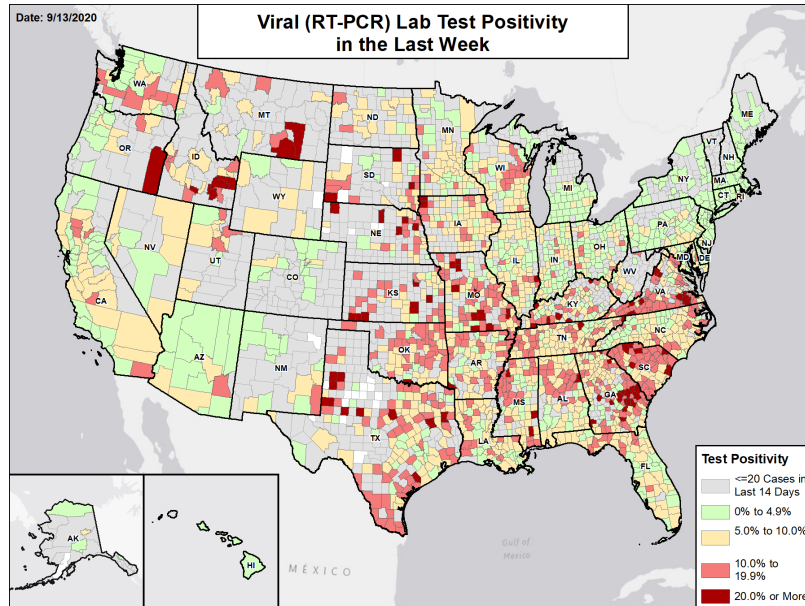
Note: Some dates may have incomplete data due to delays in reporting. Data may be backfilled over time, resulting in week-to-week changes.

Cases: County-level data from USAFacts through 9/11/2020. Last week is 9/5 - 9/11; the week one month before is 8/8 - 8/14.

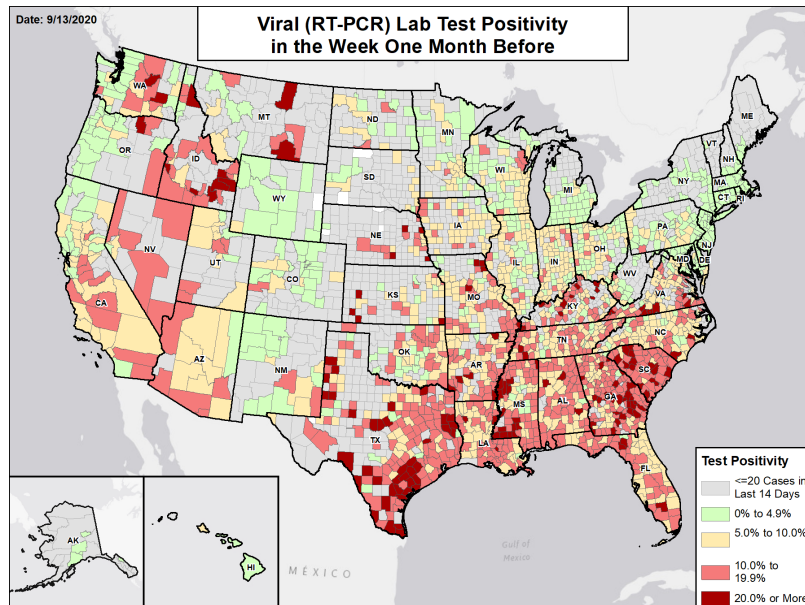


National Picture

VIRAL (RT-PCR) LAB TEST POSITIVITY LAST WEEK



VIRAL (RT-PCR) LAB TEST POSITIVITY IN THE WEEK ONE MONTH BEFORE



DATA SOURCES

Note: Some dates may have incomplete data due to delays in reporting. Data may be backfilled over time, resulting in week-to-week changes.

Testing: Combination of CELR (COVID-19 Electronic Lab Reporting) state health department-reported data and HHS Protect laboratory data (provided directly to Federal Government from public health labs, hospital labs, and commercial labs) through 9/9/2020. Last week is 9/3 - 9/9; the week one month before is 8/6 - 8/12.



METHODS

STATE REPORT | 09.13.2020

COLOR THRESHOLDS: Results for each indicator should be taken in context of the findings for related indicators (e.g., changes in case incidence and testing volume)

Metric	Green	Yellow	Red
New cases per 100,000 population per week	<10	10-100	>100
Percent change in new cases per 100,000 population	<-10%	-10% - 10%	>10%
Diagnostic test result positivity rate	<5%	5%-10%	>10%
Change in test positivity	<-0.5%	-0.5%-0.5%	>0.5%
Total diagnostic tests resulted per 100,000 population per week	>1000	500-1000	<500
Percent change in tests per 100,000 population	>10%	-10% - 10%	<-10%
COVID-19 deaths per 100,000 population per week	<1	1-2	>2
Percent change in deaths per 100,000 population	<-10%	-10% - 10%	>10%
Skilled Nursing Facilities with at least one resident COVID-19 case, death	<1%	1%-5%	>5%
Change in SNFs with at least one resident COVID-19 case, death	<-1%	-1%-1%	>1%

DATA NOTES

- Some dates may have incomplete data due to delays in reporting. Data may be backfilled over time, resulting in week-to-week changes. It is critical that states provide as up-to-date data as possible.
- Cases and deaths:** County-level data from USAFacts as of 21:00 EDT on 09/13/2020. State values are calculated by aggregating county-level data from USAFacts; therefore, values may not match those reported directly by the state. Data are reviewed on a daily basis against internal and verified external sources and, if needed, adjusted. Last week data are from 9/5 to 9/11; previous week data are from 8/29 to 9/4; the week one month before data are from 8/8 to 8/14.
- Testing:** The data presented represent viral COVID-19 laboratory diagnostic and screening test (reverse transcription polymerase chain reaction, RT-PCR) results—not individual people—and exclude antibody and antigen tests. CELR (COVID-19 Electronic Lab Reporting) state health department-reported data are used to describe county-level viral COVID-19 laboratory test (RT-PCR) result totals when information is available on patients' county of residence or healthcare providers' practice location. HHS Protect laboratory data (provided directly to Federal Government from public health labs, hospital labs, and commercial labs) are used otherwise. Some states did not report on certain days, which may affect the total number of tests resulted and positivity rate values. Because the data are deidentified, total viral (RT-PCR) laboratory tests are the number of tests performed, not the number of individuals tested. Viral (RT-PCR) laboratory test positivity rate is the number of positive tests divided by the number of tests performed and resulted. Resulted tests are assigned to a timeframe based on this hierarchy of test-related dates: 1. test date; 2. result date; 3. specimen received date; 4. specimen collection date. Resulted tests are assigned to a county based on a hierarchy of test-related locations: 1. patient residency; 2. provider facility location; 3. ordering facility location; 4. performing organization location. States may calculate test positivity other using other methods. Last week data are from 9/3 to 9/9; previous week data are from 8/27 to 9/2; the week one month before data are from 8/6 to 8/12. HHS Protect data is recent as of 12:00 EDT on 09/13/2020. Testing data are inclusive of everything received and processed by the CELR system as of 19:00 EDT on 09/12/2020.
- Mobility:** Descartes Labs. These data depict the median distance moved across a collection of mobile devices to estimate the level of human mobility within a locality. The 100% represents the baseline mobility level prior to the pandemic; lower percent mobility indicates less population movement. Data is anonymized and provided at the locality level. Data is recent as of 12:00 EDT on 09/13/2020 and is through 9/11/2020.
- Hospitalizations:** Unified hospitalization dataset in HHS Protect. This figure may differ from state data due to differences in hospital lists and reporting between federal and state systems. These data exclude psychiatric, rehabilitation, and religious non-medical hospitals. In addition, hospitals explicitly identified by states/regions as those from which we should not expect reports were excluded from the percent reporting figure. The data presented represents raw data provided; we are working diligently with state liaisons to improve reporting consistency. Data is recent as of 20:00 EDT on 09/13/2020.
- Skilled Nursing Facilities:** National Healthcare Safety Network (NHSN). Data report resident and staff cases independently. Quality checks are performed on data submitted to the NHSN. Data that fail these quality checks or appear inconsistent with surveillance protocols may be excluded from analyses. Data presented in this report are more recent than data publicly posted by CMS. Last week is 8/31-9/6, previous week is 8/24-8/30.