

# ANNUAL REPORT

# 2022

ONWARD, OUTWARD & UPWARD






# 2022 ANNUAL REPORT

## TABLE OF CONTENTS

3	REFLECTIONS
4	NEWS & TALK
6	MUSIC & ENTERTAINMENT
7	THE RETURN OF IN-PERSON EVENTS
8	FINANCIALS
8	WHERE TO LISTEN
9	PROGRAMMING SCHEDULE
10	STATION MEMBERS
13	UNDERWRITERS & FOUNDATIONS
15	HPR LEADERSHIP & TEAM

### CONTACT US

HAWAIIPUBLICRADIO.ORG  
MEMBERS@HAWAIIPUBLICRADIO.ORG  
808-955-8821

 HAWAIIPUBLICRADIO  
 @WEAREHPR  
 @WEAREHPR



Hawai'i Public Radio  
Annual Report 2022  
March 2023  
Volume 18

Published Annually by:

Hawai'i Public Radio  
738 Kāheka Street  
Honolulu, Hawai'i 96814-3726



## HPR President Recognized with National Leadership Award

The Board of Directors and staff at HPR join public media colleagues across the country in saluting our President & General Manager José A. Fajardo on being recognized with the Public Radio Regional Organizations Award.

The PRRO Award honors leaders in public media who have made significant contributions to the field.

Fajardo's experience in public media spans more than 35 years, and he has been HPR's President and General Manager since 2016. He is also an advocate and ambassador for ALS (Amyotrophic Lateral Sclerosis) since his diagnosis two years ago.

# Reflections

## Uplifting the voices and stories of our community

Aloha HPR supporter,

We are humbled and deeply grateful to you for the important role you play in assuring HPR's news and information services, discussions on statewide issues, locally curated music and so much more, serve as destinations and trusted vital resources for the benefit of our statewide community.

### Uplifting voices, staying connected and telling our community's stories

HPR continues to invest resources in broadening and deepening its local news services, both broadcast and digital. We are making strategic additions to our news staff; continuing the development of subject-specific reporting; and boosting the availability of local news content on our website and via *Island Insider* and *On the Lege*, our latest e-newsletters.

Our work with content partnerships, including StoryCorps' Military Voices Initiative and the University of Hawai'i Center for Oral History, along with several HPR podcasts in the works, will allow HPR to include and share an even wider range of community voices and stories.

Participating in and hosting in-person community events, including an evening with *The Splendid Table*'s Francis Lam at Hawaii Theater; the Hawaii Geek Meet at Ala Moana Beach Park; live Hawaiian music in the Atherton Studio; and trivia night with HPR's Generation Listen, a volunteer-led initiative to bring together younger listeners, is lifting our spirits and reminding us all of the value of staying connected.

### Assuring the stability and viability of the enterprise

Thanks to steadfast and generous community support, HPR concluded its fiscal year on budget for operating revenues and expenses. The station remains debt free. This year the station boosted starting salaries for new full-time hires and updated the station's leave policy.

The HPR Endowment Fund is funded by thoughtful donors who have made a bequest or beneficiary designation in HPR's name in their will, trust or retirement account. The principal and earnings are invested and reserved for long-term use. Following months of discussion and research with its financial advisor, the station has chosen ESG as its Endowment Fund investment strategy. ESG, also referred to as sustainable investing or socially responsible investing, is a system for measuring the sustainability of a company in three categories: environmental, social and governance, alongside financial factors.

### Innovation Fund Launched

In July, real estate investor and philanthropist, Jay H. Shidler, bestowed a \$1 million unrestricted gift to HPR. The donation will establish a new innovation fund to support community building initiatives, audience development, new original content and other key projects that align with the station's strategic plan. We are grateful to Mr. Shidler for his vision and generosity, and for giving HPR the creative space and resources to dream big.

HPR draws its strength from the community we serve—you make everything we do possible. We extend our deepest and sincerest mahalo for allowing us to serve you, now and into the future.

With gratitude,



**Francis S. Oda**  
Chair, HPR Board of Directors



**José A. Fajardo**  
HPR President & General Manager

## Looking Ahead

- Innovation projects funded by Jay H. Shidler's \$1 mil Innovation Fund
- Launch of two local news podcasts
- Concerts at HPR's Atherton Studio
- Community events across the islands



# News & Talk

HPR expands the breadth and depth of its local storytelling

Public radio's strength is its ability to deliver thoughtful and in-depth storytelling through an intimate medium. From evergreen topics to unfolding events, HPR always finds new ways to reach our community through the power of the human voice.

When a national study reported that Hawai'i's residents ranked first for insufficient sleep, our weekday talk program *The Conversation* designated a "Sleep Week" in August and featured voices from students, swing-shift workers, medical professionals and insomniacs, and even explored what sleep looks like for animals.

And when Maunaloa erupted in November, *The Conversation* again gathered and presented perspectives from a wide range of viewpoints, including Hawaiian cultural practitioners, volcanologists, Hawai'i Island residents and government officials.

Leading up to the November election, our HPR news team developed an online voter guide, with input from a listener survey.

With a focus on culture and the arts, HPR put the spotlight on Native Hawaiian cultural practices, including hula ki'i (puppetry) and weaving; as well as the vast collection of rare Korean art and literature at the Center for Korean Studies, which celebrated its 50th anniversary. And with the re-emergence of in-person events after the pandemic's peak, HPR went out into the community to feature cultural events, such as the Aloha Festivals and the 'Ōhi'a Love Fest, both held across multiple islands.

HPR expanded the reach of several local stories to a national audience through a collaboration with NPR's digital team: the November eruption of Maunaloa and the 130th anniversary of the Hawaiian Kingdom overthrow ('Onipa'a). For each story, HPR presented long-form coverage

*"I appreciate the open and honest coverage of all the local, national and international news, and the coverage of real people with real issues. Mahalo and Imua!"*

**- Michael Kahikina, Nānākuli**

Photo Credit: USGS



Photo Credit: Department of Labor - Women's Bureau / U.S. National Archives and Records Administration



Through our news and talk programs, HPR presents a wide range of voices from the present-day, such as those affected by the November eruption of Maunaloa, left; and the past, such as Hawai'i laborers, through our collaboration with the Center for Oral History.

with distinct and varied perspectives: cultural practitioners, scientists, students, activists, historians and residents. In a memo to HPR, Emily Affin Johnson of NPR writes: “Your newsroom is such a star in this network, and the beautiful public service you provide is inspiring. Please know that your incredible, powerful service is seen.”

### Voices from the Past Illuminate the Present

HPR and the University of Hawai‘i Center for Oral History re-launched its on-air and online presentation of voices from Hawai‘i’s past as a weekly feature; previously this was a quarterly feature. These ongoing segments air locally during *Morning Edition*, *All Things Considered* and *The Conversation*. Each month, the stories center around a different theme, remind us of our past, and provide context on present-day issues and dialogues. Themes in this season are as follows:

- September 2022: Labor movements in Hawai‘i, in honor of Labor Day
- October 2022: Protecting and revitalizing Kaho‘olawe, in commemoration of the 32-year anniversary of the end of U.S. military bombing practices on the island
- November 2022: Hawai‘i’s political landscape, in honor of Election Day
- December 2022: Japanese American incarceration during World War II, in commemoration of the 81st anniversary of the Pearl Harbor attack
- January 2023: Native Hawaiian voices, in honor of the 118th anniversary of ‘Onipa’a
- February 2023: African Americans in Hawai‘i, in honor of Black History Month
- March 2023: Stories from the 1918 flu epidemic with comparisons to the COVID pandemic

- April 2023: Voices from the aftermath of the 1947 Hilo tsunami, in commemoration of the 76th anniversary
- May 2023: Stories from hurricane aftermaths to mark the start of hurricane season

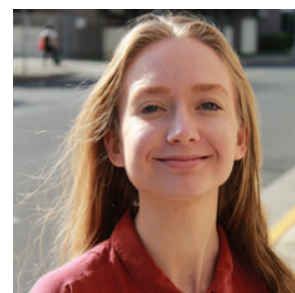
### Newsroom Growth Indicates Demand for Stories

Thanks to strong community support and demand for news and information, the HPR newsroom welcomed the following team members:

- Sabrina Bodon, previously the editor of *The Garden Island* newspaper on Kaua‘i, is our newest general assignment reporter, with a focus on local government and legislative coverage.
- Stephanie Han joins the team as a Producer for HPR’s weekday talk program, *The Conversation*.
- Krista Rados is our second Digital News Producer, responsible for keeping our website updated, and extending local stories into the social media sphere.

HPR’s news team also saw the following changes:

- Jason Ubay was promoted from News Editor to Managing News Editor.
- In line with HPR’s commitment to providing Hawai‘i with energy and climate change coverage, former *The Conversation* producer Savannah Harriman-Pote became HPR’s first Energy and Climate Change Reporter.



Top to bottom:  
Sabrina Bodon, General Assignment Reporter  
Stephanie Han, Producer, *The Conversation*  
Krista Rados, Digital News Producer  
Jason Ubay, Managing News Editor  
Savannah Harriman-Pote, Energy and Climate Change Reporter

## Digital News Projects Launching in 2023

HPR was one of six community media organizations chosen to participate in the PRX Journalism Podcast Accelerator. The accelerator is an intensive podcast development and training program for journalists across the U.S. who reside and serve communities supported by the John S. and James L. Knight Foundation. As a participant in the accelerator, HPR is developing a six-part podcast that dives deep into a local community issue. This podcast is scheduled to launch in Summer 2023.

A weekly news podcast is also set to debut in Spring 2023.

In January 2023, coinciding with the opening of the Hawai‘i State Legislature, the HPR digital news team launched the *On the Lege* weekly e-newsletter. It contains updates on bills, legislative deadlines and interviews with lawmakers.

# Music & Entertainment

New on-air hosts bring fresh perspectives to our music lineup

*“Classical music and the people who deliver it via HPR help focus my attention on what’s important to me. Great music sustains me, lifts my spirits and has made me a better listener.”*

– Jane Takahashi, Kea’au

Through our music and entertainment programming, HPR shares our airwaves with diverse voices from our statewide community.

Sharene Keli’ipunilei Lum Taba is now the sole host of *Classical Pacific*. One of the program’s new features is “Takeover Tuesdays,” during which Sharene shares the mic with student and community musicians to talk about their perspectives on classical music. “It’s really fun to have different voices on the show,” Taba writes.

Dave Lawrence’s conversations with touring musicians, previously known as *Off the Road* during the pandemic, is now called *Road Stories*, as musicians return to their touring schedules. Herb Alpert, Henry Rollins and Ozzy Osbourne are among the globally recognized musicians that are featured on *Road Stories*.

HPR welcomes several new voices to our music programming lineup. Our newest classical music host on HPR-2, Olivia Waring, comes to HPR from the WGBH family of stations in Boston, and was previously an intern at NPR. Waring told HPR: “I’m delighted to join the HPR team, and I look forward to sharing my love of classical music and guinea pig trivia with listeners in Hawai’i.”

HPR also welcomes Leimomi Bong as the Tuesday night host of the contemporary music program, *Bridging the Gap*. She previously co-founded a local community radio platform, and has hosted programs on KTUH and Hawaiian Airlines. Bong writes: “I truly believe public radio is an incredible tool for building resilient communities across the digital divide.”



Olivia Waring (main photo) and Leimomi Bong (inset) are HPR’s newest on-air music hosts.



# The Return of In-Person Events

As Hawai‘i emerges from the pandemic’s peak, HPR reconnects with our island community, face to face



Photo Credit: Marco Garcia

## A ‘Splendid’ Evening with Local Foodies

More than 600 guests attended a taping at Hawaii Theatre in Honolulu of the nationally distributed program *The Splendid Table*, co-presented by HPR and the Culinary Institute of the Pacific at Kapi‘olani Community College. During the program, host Francis Lam guided conversations with local chefs, restaurateurs, and others in the industry about Hawai‘i’s food culture and cuisine, and the distinct food-related challenges

that our islands face. The conversations from this event were featured nationally on the Feb. 4, 2023 episode of *The Splendid Table*.

Pictured above, from left to right: Kevin Yim, Zippy’s VP of Marketing and Communications; Christopher Kanemura, Fujiya Hawaii co-owner; Emma Bello, Sweet Land Farm owner/farmer; Kris Tanahara, Hawaiian Airlines Corporate Communications Managing Director; Ed Kenney, Mud Hen Water chef/co-owner; José A. Fajardo, HPR President & General Manager; Francis Lam, *The Splendid Table* host; Jayna Omaye, HPR Culture and the Arts Reporter; Sheldon Simeon, Tin Roof Maui chef/co-owner; Robynne Maili, Fête Hawai‘i chef/co-owner and James Beard awardee.



‘Uhe‘uhene

## Live Music Returns to HPR’s Atherton Studio

After a three-year hiatus, live music has returned to HPR’s Atherton Performing Arts Studio. Audience members for the Mele Hawai‘i Performance Series were treated to intimate performances from Hawaiian music artists ‘Uhe‘uhene (pictured), Ei Nei and Pōmaika‘i. The final performance of the season, from Galliard String Quartet with Raiatea Helm, featured compositions by Queen Lili‘uokalani. All four performances were either sold out or nearly sold out, and for many attendees, served as an introduction to HPR.



Ana Alicia Rosado and Robert Rosado

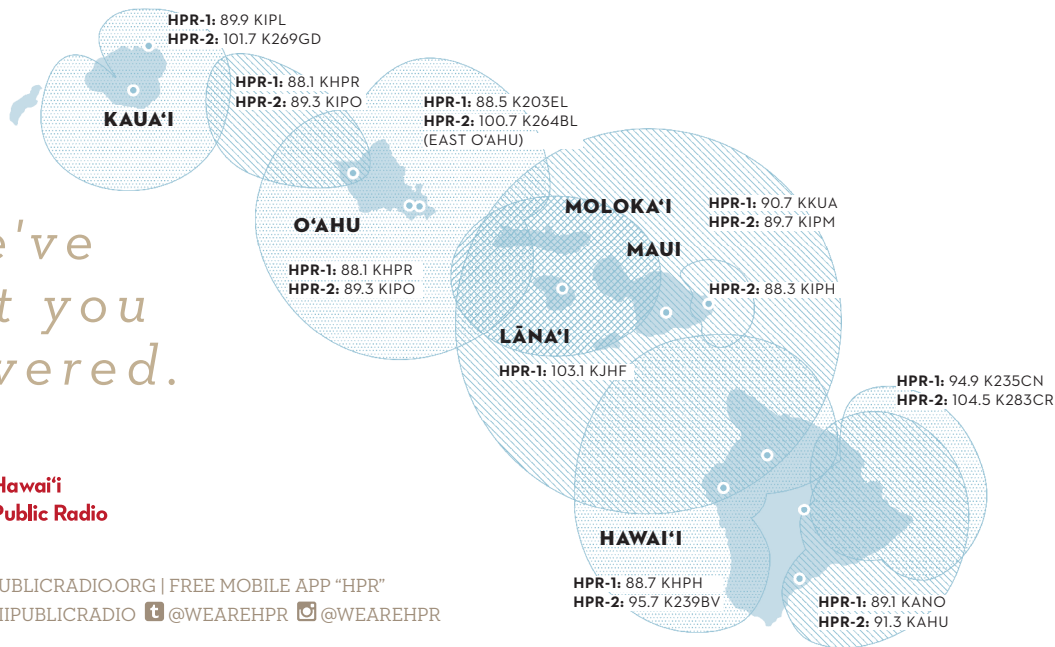
## Holding Space for Military Families

StoryCorps visited Honolulu and Hilo over the summer to gather audio stories from servicemembers, veterans and their families for its national Military Voices Initiative. In October, HPR hosted an intimate listening event and talk-story session, where powerful stories of triumph and trauma emerged, and where guests held space and supported each other. The recordings will live in perpetuity at the Library of Congress, and selected segments will be broadcast locally and nationally in 2023.

We've  
got you  
covered.



HAWAIIPUBLICRADIO.ORG | FREE MOBILE APP "HPR"  
 f HAWAIIPUBLICRADIO @WEAREHPR @WEAREHPR



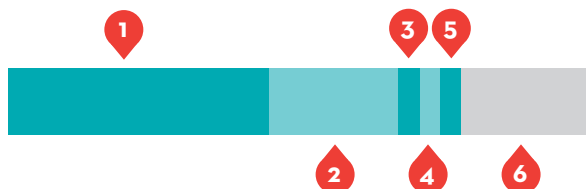
# By The Numbers

With a balanced budget, a balance sheet free of debt, and a clean financial audit, HPR works diligently to invest our community's contributions wisely, thoughtfully and responsibly. As further proof of HPR's fiscal responsibility, HPR has received the top rating, four stars, from the nation's leading nonprofit evaluator, Charity Navigator, for 11 consecutive years.

## HPR'S FISCAL YEAR 2021/2022

- |   |  |
|---|--|
| <ol style="list-style-type: none"> <li><b>1 Membership</b><br/>70%   \$4,105,157</li> <li><b>2 Underwriting</b><br/>32.5%   \$1,918,872</li> <li><b>3 Foundation &amp; Designated Endowment Gifts</b><br/>7%   \$424,661</li> <li><b>4 CPB Grant</b><br/>6%   \$370,459</li> <li><b>5 Other Revenue</b><br/>5.5%   \$316,777</li> <li><b>6 Net Loss on Investments</b><br/>-21%   -\$1,213,911</li> </ol> | <ol style="list-style-type: none"> <li><b>1 Programming</b><br/>48%   \$2,916,678</li> <li><b>2 Support Services</b><br/>29%   \$1,749,835</li> <li><b>3 Contract Services (engineering, IT, legal, call center, auditor)</b><br/>6%   \$392,323</li> <li><b>4 Utilities, Telcom, Postage, Printing</b><br/>8%   \$475,012</li> <li><b>5 Leases/Rent</b><br/>5%   \$283,188</li> <li><b>6 Repair &amp; Maintenance</b><br/>3%   \$202,114</li> <li><b>7 Insurance</b><br/>1%   \$85,201</li> </ol> |
|---|--|

**REVENUE: \$5,922,015**



**EXPENSES: \$6,104,351**







## NEWS, TALK, ENTERTAINMENT, MUSIC VARIETY

HAWAII ISLAND: KANO 89.1, KHPH 88.7, KKUA 90.7, K235CN 94.9; KAUAI: KHPR 88.1, KIPL & KIPL-FM 89.9; LANAI, MAUI, MOLOKAI: KKUA 90.7; OAHU: KHPR 88.1

	Sunday	Monday	Tuesday	Wednesday	Thursday	Friday	Saturday
Midnight	Blues from the Basement with Jon Alan			Echoes			New Sounds
1 AM							
2 AM							
3 AM	BBC News			BBC News			BBC News
4 AM							
5 AM							
6 AM	Weekend Edition with Jackie Young			Morning Edition with Derrick Malama			Weekend Edition with Jackie Young
7 AM							
8 AM							
9 AM	The New Yorker Radio Hour			Here and Now			The Splendid Table
10 AM	Inspired						Radiolab
11 AM	New Dimensions			The Conversation with Catherine Cruz			Wait, Wait...Don't Tell Me!
Noon	Travel with Rick Steves			All Things Considered with Dave Lawrence			It's Been a Minute
1 PM	Fresh Air Weekend		The World (1 PM) / The Daily (1:30 PM)			Science Friday with Ira Flatow	This American Life
2 PM	Kanikapila Sunday with Keali'i Loma		On Point with Meghna Chakrabarti				The Moth Radio Hour
3 PM				Fresh Air with Terry Gross			TED Radio Hour
4 PM	Mauka to Makai w/ Roger Bong						Selected Shorts
5 PM	All Things Considered			All Things Considered with Dave Lawrence			All Things Considered
6 PM	Hawai'i Kula'iwi with Paige Okamura			Marketplace with Kai Ryssdal			
6:30 PM		Body Show w/ Dr. Kathy Kozak	Counterspin	Bytemarks Café w/ Burt Lum	Living on Earth	All Songs Considered	American Routes with Nick Spitzer
7 PM	Brazilian Experience	On the Media	Freakonomics	Reveal with Al Letson	Hidden Brain	Left, Right & Center	
8 PM	The Real Deal with Seth Markow			Evening Jazz with Charles Husson			The Real Deal with Seth Markow
9 PM							
10 PM	B-Sides and Beyond with Jon Alan			Bridging the Gap with Nick Yee, Leimomi Bong, Roger County, Aisha Kadamatsu, Marc Ito			Blues from the Basement with Jon Alan
11 PM							

Programs subject to change.



## YOUR HOME FOR CLASSICAL MUSIC

HAWAII ISLAND: KIPH 88.3, KIPM 89.7, KAHU 91.3, K239BV 95.7, K283CR 104.5; KAUAI: KIPO 89.3, K269GD 101.7; MAUI: KIPH 88.3, KIPM 89.7; LANAI, MOLOKAI: KIPM 89.7; OAHU: KIPO 89.3

	Sunday	Monday	Tuesday	Wednesday	Thursday	Friday	Saturday
Midnight							
1 AM							
2 AM							Classical 24
3 AM							
4 AM			Classical 24				
5 AM							Howard's Day Off with Howard Dicus
6 AM							Classical Guitar
7 AM							Chamber Music Society of Lincoln Center
8 AM	With Heart and Voice						The Score
9 AM							From the Top
10 AM	Sunday Brunch with Gene Schiller		Morning Café / Morning Concert with Gene Schiller				Classical 24
11 AM							
Noon							
1 PM	Sunday Baroque with Suzanne Bona			Performance Today with Fred Child			
2 PM				Exploring Music with Bill McGlaughlin			Opera
3 PM							
4 PM	Classical 24			Classical Pacific with Sharene Keli'ipuni Lei Lum Taba			
5 PM							Classical 24
6 PM	Howard's Day Off with Howard Dicus			Evening Concert with Craig DeSilva and Olivia Waring			The Early Muse w/ Ian Capps
7 PM							
8 PM		Pittsburgh Symphony	Collector's Corner	Chicago Symphony	NY Philharmonic	Seasonal Concerts	SymphonyCast
9 PM	Classical 24						Millennium of Music
10 PM				Classical 24			Harmonia
11 PM							Classical 24

Programs subject to change.

# Station Members

HPR is rooted, created and renewed on a daily basis by the 14,492 individuals, families, local businesses, and foundations, who come together to assure independent, non-commercial news, entertainment and music thrives here in the Islands through their active and generous financial contributions. HPR gratefully acknowledges its Cornerstone Society supporters for your leadership and deep commitment to furthering the station's mission and work.

*Contributions received January 1, 2022 to February 1, 2023.*

## Cornerstone Society

### FOUNDER'S CIRCLE

#### \$1,000,000

Innovation Fund  
Jay H. Shidler

#### \$100,000

Elias Family Philanthropic Fund

#### \$50,000 - 99,999

Bendon Family Foundation Inc.

#### \$30,000 - 49,999

Friend of HPR  
Dr. Thomas & Mi Kosasa

#### \$20,000 - 29,999

Cooke Foundation  
Rhoady Lee & Alan Gartenhaus  
John R. Halligan Charitable Fund  
Island Insurance Foundation  
Kosasa Foundation  
LGA Family Foundation  
Pikake Foundation

#### \$15,000 - 19,999

First Insurance Company of Hawai'i

#### \$10,000 - 14,999

Friend of HPR (2)  
Darlene Abt  
Carol & Clive Davies  
John & Jeanette Finney  
Chuck & Zana Mitsui  
Nuestro Futuro Foundation  
The Poha Fund  
Sidney Stern Memorial Trust  
Ralph E. Vaughn  
G. N. Wilcox Trust

#### \$5,000 - 9,999

Anderson-Beck Fund  
Marcus Bass  
Evalyn M. Bauer Foundation  
Madeline & Douglas Callahan  
Francis Capelli  
Ms. Evelyn F. Cox  
Mr. R. Dougal Crowe  
Dods Foundation  
Peter Durst & Ellen Seale  
Sumner & Angela Erdman  
First Hawaiian Bank Foundation  
Mrs. Sandra P. Fricke  
Stephen & Gloria Gainsley  
Mr. & Mrs. Charles Hall  
George & Evelyn Hao  
Harrison Family Fund

Hawaiian Electric Co.  
Howard Higa  
Ifuku Family Foundation Fund  
Marianne Steffik Irish Fund  
Ms. Kim Coco Iwamoto  
Lynne Johnson & Randolph Moore  
Paul J. Kosasa  
Kubota Foundation  
Jodi A. Lam & Timothy Takaezu  
Mr. Steven Loui  
George Mason Fund  
Barbara McLellan  
Mr. & Mrs. Peter Merriman  
Meshewa Farm Foundation  
Francis & Caroline Oda  
Padosi Foundation  
Perigon Wealth Management  
Debra Pfaltzgraff & Robert Creps  
Judith Pyle & Wayne Pitluck Donor Fund  
Lemoine & Foster Radford  
Mr. Charles B. Salmon, Jr.  
Dr. David Shaw & Dr. Tom Kane  
Frank G. Stanton  
Nakila & Marti Steele Family Fund  
Paul Sturm & Flora Ling  
The Weissman Family Foundation  
Barbara White

#### \$3,000 - 4,999

Friend of HPR  
Mr. Bob Acree & Mrs. Joyce  
Muktarian  
Bob & Kelly Armstrong  
Bank of Hawaii Charitable Foundation  
Ms. Pat Barron  
Tim Bostock & Melanie Holt  
Diana M. Buckley & Bob A. Fazzi  
Michael & Leslie Carroll  
Darrell & Siobhan Cavens  
Les & Zora Charles  
Cathy Ching & Peter Grossman  
Rick & Terry Clifton  
Paul D. Cool & Betty J. Wood  
David & Sarah DeLuca  
John Dorsey  
Peter Drewliner  
Claire S. Durham Charitable Fund  
John Henry Felix  
Marcie & Kevin Herring  
Jessie Hill  
Dr. Tyrie L. Jenkins  
Jeannette Johnson & Ian Capps  
Bryan Kapeckas  
Kathryn S. Matayoshi  
Colbert & Gail Matsumoto

Mike May  
Capt. & Mrs. Jim McCoy  
Bruce McEwan & Lillian Cunningham  
Mr. & Mrs. Howard T. Merl  
Marcus & Cheryl Merner  
Matt & Corrie Miller  
Cindy & Dickie Moon  
James & Lauren Moriarty  
Paul T. Murakami  
Konrad Ng  
Gary & Barbara North  
Pam Omidyar  
Mr. Peter L. Rosegg  
Michelle Renee Slentz  
Mr. & Mrs. Christopher C. Smith  
Mr. Warren Stone & Mrs. Karen Dyas  
Swayne Family Fund  
Dr. Robert Tanaka & Dr. April Leong  
Wesley Teraoka  
Tropical Music  
Joseph Uno & Aloma Wang  
Leonora & Joseph Wee Fund  
Mr. Paul Weidig  
Mr. & Mrs. Gaylord Wilcox  
Mr. Lin Wong  
Mr. Louis Peter Xigogianis  
Ms. Valerie Yee



*“HPR provides a fundamental platform to help solve the most pressing issues and challenges our civilization faces today.”*

**- Taichi Yasuhara, Kāhala**

**\$1,000 - 2,999**

- Friend of HPR (16)  
 Nancy & Thomas Alejo  
 Aaron Alter  
 Dr. Stacy R. Ammerman  
 Ron & Sherry Amundson  
 Sig Anderman  
 Sandra S. Anderson  
 Mr. & Mrs. John Andrews  
 Aqua Gems LLC  
 Arcadia Foundation  
 The Arn and Merry Family Friends Fund  
 Around The Clock Business Rentals  
 JAA & Associates  
 Laura Assum-Dahleen & Rodney Dahleen  
 Lynn Babington & Randy Carpenter  
 Mr. Andy K. Baker  
 Jeremy & Michelle Baldwin  
 Ann Barclay Rovner & Bruce Rovner  
 Jack & Celia Barouh  
 Simon Barr  
 Jennifer Barrett Fajardo  
 Ladd & Frances Baumann  
 Mr. & Mrs. Jack E. Belson  
 Gardner & Patricia Bemis Fund  
 Benton Management Inc  
 Jennifer Benz  
 Elizabeth & Mark Berman  
 Oren Bernstein  
 Gary Beuschel  
 Alice & William Bierer  
 Dorothy Billingsley & Robert Stephens  
 Mr. Charles Birkeland  
 Lyle & Ann Bjork  
 Debra & Ernie Blachowiak  
 Mr. Richard Blum  
 Ms. Jennifer L. Bohlin  
 Marlene Booth & Avi Soifer  
 Dale & William Bordner  
 Alan P. Brache  
 Mary Ann Brady  
 Dr. & Mrs. Alan Britten  
 Linda Brogan  
 Michael Brown  
 John Seely Brown & Susan E. Haviland  
 Ralph Brydges  
 Heatherly Bucher  
 Ms. Nancy J. Budd  
 Mr. & Mrs. Robert B. Bunn  
 Andrew & Mikiko Bunn  
 Erik Burian & Brenda Jensen  
 Mr. & Mrs. Edmund Burke  
 Graham & Erika Burns  
 Susan Burriss  
 Donna Buscemi  
 Ms. Georgine Busch  
 Business Insurance Services Inc.  
 Stephen & Julie Buto  
 Roberta W. Cable  
 Bennett Cale  
 Dr. & Mrs. John P. Callan  
 George W. Campbell  
 Francesca Carey  
 Ms. Marilyn Carlsmith  
 Carroll Capital Management  
 Marilyn Rose Carter & Glenn Wong  
 Robert & Teresa Cartwright  
 Rick Casey & Kelen Geller  
 Dr. John Casken  
 Ms. Charlene Casserley  
 Olivia & James Castro  
 Mr. & Mrs. Richard Chadwick  
 Steve & Susan Chamberlin  
 The Dai So & Eleanor Leong Chang Fund  
 Glenn Kum Lun Chang  
 Ruth L. Chang  
 Mr. Clifford B. Chang  
 Ronald & Ellen Chapman  
 Karen Char  
 Hui-i Chen  
 Dr. Won-Yee Cheng-Leever  
 Dr. Julia A. Cherry  
 Mary & Doug Chesney  
 Amy Ching  
 Emeline Y. Ching  
 Chauncey & Teddie Ching  
 Hung Wo & Elizabeth Ching Foundation  
 Ms. Adele Deming Chong  
 Newton & Roberta Chu Fund  
 Chun Kerr LLP  
 Ms. Sun Min Chun-Dayondon  
 Steven Chung  
 Robert & Edwina Clarke  
 The Coconut Traveler  
 Dr. & Mrs. Marc Coel  
 Marilyn & Schuyler Cole Charitable Account  
 Drs. Tarquin Collis & Katie Kingsley  
 Bill Comstock  
 Amy & Bob Condon  
 John R. Condrey  
 Mrs. Janet R. Cooke  
 Patricia & Chris Cooper  
 Miriam & Brian Cox  
 The Hon. Virginia L. Crandall  
 The Creative City Fund  
 Richard & Myrna Cundy  
 Cunningham Cabinets  
 Dr. Shirley J. Daniel  
 Ms. Alison Danz  
 James Dator & Rosemary McShane  
 Mattson Davis  
 Geraldine DeBenedetti  
 Stefanie Delmont  
 Dr. & Mrs. Peter Denman  
 Ramona Deveney  
 Christopher & Masako Dix  
 Charlotte & Graham Dixon  
 Christopher Dods  
 Dolphin Bay Hotel  
 Jim Doran  
 Bill Dorman & Noriko Namiki  
 Steve Dorman  
 Mr. & Mrs. Nick Dreher  
 Dick & Mairy Droese Fund  
 Dr. Marilyn F. Dunlap  
 John Dutoit  
 Janet Dwyer  
 Ms. Carolyn A. Eaton  
 Walter Eccles  
 Kaeti Ecker  
 Dr. Roger Ede & Donna Ede  
 Dr. Dirk Elting & Julie Elting  
 Engaging the Senses Foundation  
 Ms. Suzanne B. Engel  
 Mark England & Marjorie Zensen  
 Ruth Erickson  
 Dr. Lawrence Eron & Dr. Donna Cheng  
 Ms. Roxanna Faith  
 Denise & David Falls  
 Cissy Farm & Donna Kalama  
 Mary Fastenau & John Flanagan  
 Rebecca & John Faunce  
 Ms. Kathy C. Fay  
 Rosemary Fazio & David Randell  
 David Fell  
 John & Kim Fenton  
 Mr. Scott Ferguson & Ms. Joyce Miller  
 Ms. Diane S.C. Ferreira  
 Mr. Binkley Fidge  
 Jane & Paul Field  
 Dr. Judith FitzGerald  
 Kam K. Flower  
 Bruce & Doris Forbes  
 Lynne Forbes  
 Ms. Tanja Foulds  
 Carol Fox & Jay Henderson  
 Beverley Fraser  
 L. Richard & Susie Fried  
 Mr. & Mrs. Gerard Fryer  
 Fujino Family Limited Partnership III  
 Deborah Fulton  
 Don & Carlene Furukawa  
 Jan Futa  
 Joshua Garcia  
 Mr. & Mrs. Jon Gelman  
 Mary Jean Giannelli  
 Mark Glick & Hitomi Shimada  
 Ms. Karen Gmunder  
 Jodi Goh  
 Stan & Carol Golembeski  
 Rose Marie Gooding  
 Thomas M. Gottlieb & Carol A. Kirsh  
 Mr. Robert B. Graham  
 Dr. Mark T. Grattan  
 Aaron Green  
 Nancy Grekin  
 Rhonda Griswold  
 Mr. Alysso Grummt  
 Kenneth & Katharine Hafner  
 Chris Haig  
 Mr. N. Robert Hale  
 Mr. Michael Haloski  
 Patricia Halpern  
 Judyth K. Hanna  
 Pete & Joan Hansen  
 Ms. Martha L. Hanson  
 Mrs. Margaret Y. Harada  
 Willard Haraguchi  
 Ms. Mary J. Harbold  
 Ms. Gayle Y. Harimoto  
 Christine & Ross Hartley  
 Dr. & Mrs. William A. Hartman  
 Eric & Lynn Hashizume  
 Ms. Connie Hastert  
 Peggy & Richard Hastings  
 Ms. Barbara Hastings  
 Hawaii Psychology Collective  
 Hawaiian Lenses  
 Junie Hayashi & Regan Yamamoto  
 Ms. Geraldine Hayes  
 Daniel & Lindsey Heathcock  
 Theresa Heinze  
 Katherine S. Heinzen-Jim & Kevin Jim  
 Donald Helfgott  
 Mr. Rick A. Heltzel  
 Mr. Mel Hertz  
 Frances Hisashima  
 Ellen Hocker  
 Dawn Hofmann  
 James P. Hogan  
 John Holliday, Jr. Fund  
 Jim & Karen Howell  
 Ms. Yvonne W. Hsieh  
 Mrs. Margaret Hu & Mr. Saul Rollason  
 Mr. & Mrs. Gilman K. M. Hu  
 Dr. & Mrs. Thanh V. Huynh  
 Elodie Imonen  
 Philippa Imrie  
 Susan Ing & Kent Visser  
 The Interbeing Universal Fund  
 Bonnie Irwin  
 Jim Ishikawa  
 Glenn Ishioka  
 Ms. Janell Israel  
 Gary A. James  
 Ms. Kathy Jaycox  
 Iris R. Jessup  
 JK Family Foundation  
 Dr. Donald K. Johnson  
 Chuck & Skipper Jones  
 Robert W. Jones  
 Debra Kaawalaule-Townsend  
 Walter Kam  
 Charles Karmella  
 Daniel & Jane Katayama  
 Mr. & Mrs. Alvin Z. Katekaru  
 Jim Kauahikaua & Jeri Gertz  
 Michael & Gail Kawaharada  
 Richard M. Kaya  
 Ke'ena Mauliola Nele Paia LLC  
 Rupert Kealoha  
 Cathleen Keene  
 Capt. David A. Keliukuli  
 Carol & Edmund Kellett  
 Richard Kelley  
 Kelly Spicers Inc  
 Margot Kenly  
 Dr. Katrena Kennedy & Randy Kennedy  
 Daniel Kern-Blau  
 Ms. Nancy S. Kickert  
 Mr. Phillip T. Kikukawa  
 Nancy Kilday Golly  
 Mr. & Mrs. Robert Kildow  
 Alexander Kim  
 Juli M. Kimura Walters  
 Kirk-Landry Charitable Fund  
 Ms. Nan Kitagawa  
 Kara Kitazaki-Chun  
 Dr. Michael Kliks & Dolores Brockman  
 Wiley W. Knight  
 Mr. John Knorek  
 Arne Knudsen  
 Mr. & Mrs. Chester Koga  
 Kathleen Kokron  
 Janean Kong  
 Walter & Marcia Kortschak  
 Isaac Kosasa  
 Dr. Drew Kovach  
 Steven Kramer  
 KSK Foundation  
 Kit Kurtz  
 Ms. Julia C. Kwan  
 Lucy Lamkin  
 Ms. Evelyn B. Lance  
 Robert D. Lanser, Jr.  
 Dr. Edward S. Lanson  
 David W. Larson & Janis Turner  
 Mr. & Mrs. Walter J. Laskey  
 Mr. David Lassner  
 Sheree & Mike Latif  
 Nem Lau  
 Sylvia Law  
 Mr. Jack Law  
 Mr. Van Lee  
 David & Valerie Lee  
 Dr. & Mrs. Ernest K. Lee  
 Mathew Lee, Jr. & Jacqueline Rush Lee  
 Doug Lee  
 Carol M. Lee  
 Joyce Lee-Ibarra  
 Mike Leidemann  
 Albert Lemons  
 Joseph Leonardo  
 Mr. William R. Liggett  
 Mr. Ian Lind & Mrs. Meda Chesney-Lind  
 Marilyn Link  
 Mr. & Mrs. Robert A. Lipman  
 Elliot H. Loden  
 Paul Loizeaux  
 Jeffrey & Jamie Long  
 Mr. David M. Louie  
 Linda Love  
 Ms. Brenda R. Lowrey  
 Rhona Lubomirski  
 Donna Lum  
 Carol K. Lum  
 Steven Lum  
 Michael Lundrigan  
 Doug Lung & Laurie Kallis  
 Mrs. Mette W. Lyons  
 Anatole & Emiko Lyovin  
 Steve Macedo  
 Mimi N. MacNaughton  
 Katherine MacNeil & Gregory Niemetz  
 Helen MacNeil & Patrick McFadden  
 Mrs. Mary Anne Magnier  
 Mr. Aaron D. Mahi  
 Nancy Makowski  
 Mr. Derrick Malama  
 Mrs. Annie Malama  
 Keith Mallini  
 Richard & Judie Malmgren  
 Dr. Jacqueline R. Maly & Mr. Ted Maly  
 Suzanne & Steve Mankoff  
 Dolores Furtado Martin Foundation  
 Elsie Maruno  
 Robin Matsukawa  
 Shoshana & Regan Matsumura Fund  
 Mr. & Mrs. Ernest Matsumura  
 Heather & John Maughan  
 Paul Maxwell  
 Cindy McCaffrey  
 Ms. Kendra McDonough  
 Ms. Catherine McElwee & Mr. Joe Smith  
 Dr. & Mrs. Michael J. Meagher





*“HPR is like a well-informed, compassionate and funny family member who you want to listen to every day.”* - Kevin Gibson, Pacific Heights

Jennifer Meehan  
Drs. John & Marion Melish  
Mr. & Mrs. Robert K. Merce  
Edwin L. Merideth, III  
Ms. Deborah Merritt  
Mark Meuser & Deborah Lerner  
Geoffrey Michaelson &  
Lehua Li-Michaelson Fund  
Dr. Charles F. Miller  
Laurie Miller  
Thao Miller  
Mr. & Mrs. Paul Misura  
Mr. W. Mitchell  
Mr. Roy Miyamoto  
Ms. Jean Miyashiro  
The Mohn Family Foundation  
Derek J. Monell & Joann Sarubbi  
James & Betty Monk  
O.L. Moore Foundation  
Mr. & Mrs. William L. Moore  
Joe & Teresa Moore  
Jennifer Moran  
Robert Morawe  
Paul & Barbara Morgan  
Mrs. Sally Morgan  
Marcia Morse  
Paul Mospens  
Movie Museum  
Audrey Mueh  
The Rev. Heather Mueller  
Mr. & Mrs. Mark Murakami  
Mr. Tom T. Muraoka  
Abigail Murray  
J.N. & Linda Musto  
Linda R. Myers  
Leslie Nakagawa  
Ms. Cynthia C. Nakasato  
Ms. Joan Y. Namkoong  
Kimberli Napiewocki & Kim Sheree  
Dr. George Nardin  
Caroline & Charles Neal  
Ernie & Cathy Nearman  
Deborah Nehmad  
Ms. Billie Nelson  
Steven Nesseler  
Deane Neubauer & Keiko Sakuma-  
Neubauer  
Ng-Warren Trust  
Mr. John L. Noland  
Sherry Nolte  
Mr. & Mrs. Andrew T. Nomura  
Not Today, Maybe Tomorrow Fund  
Mr. & Mrs. Rolando Oasay  
Doug & Peggy Obenauf

Francis T. O'Brien  
Alexandra & Ronan O'Gorman  
Dr. & Mrs. Jonathan Okabe  
Mr. Brian Okamura  
Ms. Joyce Okano  
Curtis & Lynne Okazaki  
Dr. Carlos A. Omphroy  
William Orr  
Orthopedic Care Hawaii  
Christopher & Tina Oscar  
Alan & JoAnn Oshima  
John Otte  
Edmund Oyama  
Cynthia & Robert Pacheco  
Pac-Tech Communications  
James & Marilyn Pappas  
Arthur & Patricia Park  
Iris Park  
Amy Parsons  
Ms. Teresa Parsons  
Patagonia.com  
Ms. Catherine H. Payne  
David Pence & Athline Clark  
Pennybacker Creative LLC  
Peony Fund  
Mr. & Mrs. Matthew H. Perry  
Ms. Ann M. Peters  
Louis & Flori Petri Foundation  
Regina Pfeiffer  
Tim Pfingsten  
Jeanette Phillips  
Randy Pinal  
Planning Solutions Inc.  
Polyorchid Systems  
Patricia Posadas  
Mr. J. William Potter, Jr.  
Lily & Jerry Prentiss  
Jessica Pulliam  
Dr. Lee Putnam  
Ms. April Putnam  
Diane Radcliffe  
Shandhini Raidoo  
Mr. & Mrs. Randy Rarick  
Martin Rathbun  
Greg Ravizza & Kathleen Ruttenberg  
Enid Rayner  
Noriko Reed  
Mr. & Mrs. James Reinhardt  
Marilyn A. Requena  
Dr. & Mrs. Steven Rhee  
Mr. Kenneth S. Robbins  
Michael Roberts & Michelle McGregor  
Patricia Robinson  
Mr. & Mrs. Chris Rose

Patrick & Stephanie Ross  
Ms. Linda Ross & Mr. David Reid  
Leonard Rossoff & Eileen Hilton  
Mr. Scott Rowland  
Johanette Rowley  
Tim & Mariko Roytman  
Michele Rundgren  
Cary A. Rupert  
Jessica Ruud  
Mr. Leroy Sajulga  
The Salem Family  
Claire Sanders  
Suzanne M. Sato  
Maureen Schaeffer & Alan Price  
Mrs. Barbara Schatz  
Diane Scheurell  
Karen & Paul Schlather  
George Schmelzer & Judith Inazu  
Dr. & Mrs. Niklas Schneider  
Marcus Schoen  
Ms. Jane E. Schoonmaker  
Ms. Marsha Schweitzer  
Corina Scoggins  
Ms. Sheryl B. Seaman  
James & Diane Seatis  
Joan & Jerry Shapiro  
Susan & Glenn Shea  
Jane E. Sherwood & Robert Masuda  
Margaret S. Shiba  
Mr. Daniel T. Shiu  
Lenora Shiu  
Gil Silberman & Norie Takano  
Jon Simmons  
Catherine B. Simpson  
Dr. Arleene Skillman  
Michael Sklarz  
Ms. Ann R. Sloat  
Kalani Sloat  
Hannah Slovin  
Clifford W. Smith  
Sarah Smith  
Mrs. Sharon Smockhoffmann  
Mr. & Mrs. Roy Sonomura  
Thomas & Michele Sorensen  
Source It  
Mrs. Kathleen M. Spalding  
Mrs. Susan B. Spangler  
Peter B. Sparks & Clytie P. Mead  
Bruce & Genevieve Spear  
Anthony J. Spinetta  
Cdr. Timothy J. Spowls, USN (Ret)  
Gregory P. St. Pierre  
Katie Stack & Pavel Mavac  
Ms. Betsy Staller

Judy & David Starbuck  
Stein Family Fund  
Mr. & Mrs. Alan Stockton  
Mr. Donald I. Stoddard  
Michael & Cynthia Stollar  
Stephanie Stoll-Dalton  
Sandra & C. Earl Stoner  
Robert & Caroline Stoner  
Dennis Streveler  
Stephanie A. Strickland  
Gerald Sumida  
Veronica Suozzi & Gregory Auberry  
Dawn Suyenaga & Jeff Dinsmore  
Donald A. Swanson  
Ms. Sharene Taba & Mr. Dean Taba  
Tad Tadani  
Linda Chu Takayama  
Patti Takayama  
Patricia Takemoto & Robert Morse  
Dr. & Mrs. Curtis Takemoto-Gentile  
Sandra & Howard Takishita  
Talk Kaimuki  
Nolan & Lori Tamayori  
Alexandra Tan  
Tamotsu & Esther Tanaka  
Michael Tarring  
Linda & Leighton Taylor  
Elaine S. Taylor  
Dr. Craig Thomas & Ms. Susan Scott  
Kyle Thompson  
Michael F. Thompson  
Ronald E. & Ivy L. Timpe Fund  
Mr. Michael Titterton  
Ms. Laurie Tochiki  
Ms. Dana Tokioka  
Thomas Tollefsen  
Dr. & Mrs. Christopher M. Tortora  
Fay Toyama  
Elizabeth & Joel Truesdell  
Jill Tucker  
TWANDA Foundation  
Peter Uehara  
In memory of Joyce & Frank Vahovich  
Margo Vassar & Marcel Cabel  
Mrs. Frances Vaughan  
Dawn Vincent  
Susan & Miles Wagner  
Melinda Walker  
Jack Wallace  
Jeff & Claudia Wallace  
Judi S. Walsh  
Drs. John & Anthea Wang  
Dr. Robert Waterford  
Jhamandas Watumull Fund

Mrs. Barbara W. Weaver  
Mrs. Tekla Weber  
Mr. Eldon L. Wegner  
Mr. & Mrs. Edward J. Weldon, Jr.  
Nancy Weller  
Robin Werner  
Jamie & Cassie Westnedge  
Anne Wheelock  
Perry & Joan White  
Kelly & Kevin White  
Karen & Frank White  
Alice Widmann  
Mr. Gary L. Wild  
Ann Marie & Jack C. Wilder  
Charitable Fund  
Timothy Wilhelm  
Ms. Christine Wilson  
Amanda Winchester  
Jana & Howard Wolff  
Keith Wolter  
Ms. Lisa C. Wong & Mr. Warren Wong  
Dr. Nathan A. K. Wong  
JoAnn & Frederick Wong  
Allen & Sally Wooddell  
Chris Woodward  
Lesley & Robert Woodward  
Dr. Barbara E. Workman  
Ms. Sharon Worthington  
Margot & John Wray  
Gregory Wrenn & Robert Pyburn  
Fund  
Mr. & Mrs. George M. Wyman  
Dr. & Mrs. Craig A. Yamamoto  
Sally & Carl Yanagawa  
Helen Yap  
Mr. Carl Yee & Ms. Mary Beth Wong  
Ms. Nola Yee  
Yim Investment  
Ms. Ann K. Yoklavich  
Beryl You & Irwin Jiang  
Dr. Lockwood S. J. Young  
Timothy S. Young  
Ms. Sharon Young  
Ahmad & Penelope Yu  
Chow Yu & Scott Whiting  
Frank & Marian Zajac  
John Zak  
Ms. Ana Maria Zander  
Janet Zeiger  
Sharon Ziegler & Charles Chong  
Stanley & Janet Zisk

## Legacy Society

Members of the HPR Legacy Society are helping to preserve locally-focused independent journalism, exceptional music, and culture and arts content for future generations by designating Hawai'i Public Radio as a beneficiary in their will, trust, life insurance or retirement plan. Our thanks to these individuals and families who have thoughtfully included HPR in their future planning.

Friend of HPR (22)  
Neil Abercrombie & Nancie Caraway  
Estate of Dorothy R. Abthai  
The Arn and Merry Family Friends Fund  
Estate of Wini Au  
Estate of Mrs. Harriet D. Baldwin  
Estate of Mrs. Ruth S. Ballard  
Estate of Ms. Nancy M. Bannick  
Carl & Marilyn Bernhardt  
Dr. Roger Brault & Dr. Felice Brault  
Donna Buscemi  
Dr. Joan E. Canfield & William Kramer  
Celia & Lloyd Canty  
Mr. Scott Carter  
Bruce & Lisa Cary  
Mollie W.M. Chang & Paul Schwind  
Rick & Terry Clifton  
Margaret Almada Collins  
Ms. Lee G. Cone & Mr. Michael Cone  
William & Carol Coops Charitable Fund  
Mr. R. Dougal Crowe  
Richard & Myrna Cundy  
Michael W. Dabney

Carol & Clive Davies  
Ms. Carolyn Davis  
Estate of Mrs. Millie M. Dillard  
Karen Earnshaw & Cary Everts  
John Henry Felix  
Mr. Scott Ferguson & Ms. Joyce Miller  
Estate of Shirley N. Ferreira  
Estate of Alice Folkart  
Mr. Steve Frank  
Suzanne Frayser  
Daniel & Deb Freund  
Mrs. Sandra P. Fricke  
Jeffrey & Dominique Gere  
Arien B. Grabbe  
Estate of Mrs. Luvia T. Gregg  
Estate of Liselotte S. Grieshaber  
Estate of Mrs. Freddie Harby  
Mr. Stephen C. Haus  
Joseph R. Himmel Trust  
Alan Howard & Janet P. Rensel  
Estate of Gail Hudson  
Estates of Richard & Margaret Inskeep  
Estate of Glenn S. Ito

Estate of Henry K. Iwasa  
Milinda Jaffe  
Mark & Carol Johnson  
Elizabeth Johnson  
Moo Kana'io  
Daniel & Jane Katayama  
Carol Kellett  
Lei Kihoi  
John & Carolyn Kimball  
Juli M. Kimura Walters  
Estate of Eugene C. Kincaid and Mitsugi Murakami  
Janis Turner  
Estate of Barry LeFevre  
Mike Leidemann  
Estate of John Venizelos Levas  
Estate of Mrs. Lois Luehring  
Mr. Franklin T. Luke  
Mr. & Mrs. Jeffrey A. Malison  
Estate of Katherine B. Marcelius  
Marcelius Charitable Trust  
Estate of Jean Kadooka Mardfin  
Ms. Deborah Masterson  
Christine Medeiros  
Mr. Richard S. Morris

Mrs. Gloria Munson  
Estate of Keiji Murakami  
Estate of Judith R. Neale  
Estate of Richard Nersesian  
Estate of Dr. Norma Nichols  
Marilyn Nicholson  
William & Jan Olson  
Estate of Ms. Anita Ouversen  
Estate of David Paul Palin  
Mary Paterson  
Ms. Ann M. Peters  
Mr. J. William Potter, Jr.  
Marilyn A. Requena  
Mr. Samuel E. Rhoads  
Estate of Sara Marie Riley  
Raymond & Lana Riss  
Maxine Robson Endowment Fund  
Ms. Kathy Rose  
Shawn Rose & Taj Carbrey  
Estate of Gordon Thomas Salter  
Estate of Patricia Sands  
Estate of Robert D. Sebring  
Estate of Mrs. Mary M. Shaw  
Mrs. Sharon Smockhoffmann  
Anthony J. Spinetta

Estate of Ms. Barbara J. Steffee  
Nathan Sult & Beth Tarter  
Estate of Dr. Lynn N. Tabata  
Ms. Elizabeth A. Tajima  
Eileen Tamura & Dave Raney  
Estate of Mr. Robert B. Thomas  
Rodrik S. Thompson  
Estate of Ms. Norrie Thompson  
Mrs. Alice K. Tucker  
Joseph Uno & Aloma Wang  
Estate of Rozemaryn Van Der Horst  
Ms. Carla Van Vliet  
Estate of Ms. Angeline A. Walther  
Estate of Karen S. Watanabe  
Estate of JoAnn G. Waugh  
Estate of Walter Victor Weber, Jr.  
Monique & Gary Weisman  
Mr. Drake C. Wells  
Perry & Joan White  
Mr. George Willoughby  
Mr. & Mrs. Stephen Wilson  
Mr. Louis Peter Xigogianis  
Mr. Carl Yee & Ms. Mary Beth Wong  
Estate of Joseph Rothstein  
Myrna Zezza  
Stanley & Janet Zisk

## Program Underwriters & Foundations

HPR is truly locally funded and managed, a critical function of our independence. Our program underwriters help the station meet its programming costs, while affiliating their names with a valuable community service.

AES  
AES Foundation  
Ala Moana Hotel by Mantra  
Aloha Air Cargo  
Aloha Hospitality Professionals  
Aloha International Piano Festival  
Aloha United Way  
AlohaCare  
American Renaissance Academy  
American Savings Bank  
Anchor Systems Hawaii  
Arne & Ruth Werchick Charitable Fund  
Ballet Hawaii  
BAMP Project & The Republik  
Bank of Hawaii  
Bavarian Motor Experts  
Beach Tree Restaurant, Four Seasons Resort Hualalai  
BIA-Hawaii  
Bill Fernandez

Bishop Museum  
Blue Note Hawaii  
Board of Water Supply  
Broadway in Hawaii  
Busch Consulting  
C. S. Wo & Sons, Ltd.  
The Cades Foundation  
Caswell Orthodontics, Dr. Kimi Caswell  
CCIM (Certified Commercial Investment Member) Hawai'i Chapter  
Chamber Music Hawaii  
Chaminade University  
Choir of the Lutheran Church  
The Cole Academy  
Cosco Air Conditioning & Refrigeration  
The Creative City  
Damon Key Leong Kupchak Hastert

David Sedaris  
Davis Levin Livingston  
DAWSON  
Dean & Deluca Hawaii  
Diamond Head Theatre  
Dom De Luca's Restaurant  
Dowling Company  
Downtown Art Center  
DTRIC Insurance Company  
85°C Bakery Café  
Early Music Hawaii  
EcoClean Hawaii  
Environmental Science International  
Evergreen by Debra, LLC  
Family Mediation Hawai'i  
The Family of Joseph Rothstein  
FarmLovers Farmers' Markets  
Hale'iwa Farmers' Market  
Kaka'ako Farmers' Market  
Kailua Town Farmers' Market

Pearlridge Farmers' Market  
Ferraro Choi  
First Hawaiian Bank  
First Insurance Company of Hawaii  
Foodscapes Hawaii  
FoodStart by Chef Jeremy  
Four Seasons Resort Hualalai  
Furniture Plus Design  
GEN Korean BBQ House  
Gourmet Events Hawai'i  
Green Building Hawai'i  
GUILD Consulting  
Haleakala Ranch  
Halekulani  
Hanahau'oli School  
Handcrafted Restaurants  
The Beach House, Poipu, Kaua'i  
Moku Kitchen, SALT at Kaka'ako  
Monkeypod Kitchen, Kā'anapali, Maui

Monkeypod Kitchen, Ko Olina, O'ahu  
Monkeypod Kitchen, Wailea, Maui  
Hastings & Pleadwell, A  
Communication Company  
Hawaii's Association of Independent Schools  
Hawai'i Book & Music Festival  
Hawai'i Community Foundation  
Hawai'i Contemporary  
Hawaii Dermatology & Plastic Surgery Centers  
Hawaii Forest & Trail  
Hawaii International Film Festival  
Hawai'i Island Community Health Center  
Hawai'i Life  
Hawai'i Meals on Wheels  
Hawaii Opera Theatre  
Hawaii Pacific Dental Group, Dr. Rohinton "Ron" Patel, DMD  
Hawai'i Pacific Health

Hawai'i Pacific University  
Hawai'i Performing Arts Festival  
Hawaii State Federal Credit Union  
Hawai'i Symphony Orchestra  
Hawaii Theatre Center  
Hawaii Tokai International College  
Hawai'i 'Ulu Cooperative

Hawaiian Airlines  
Hawaiian Native Corporation  
HEMIC  
Highway Inn Hawaiian Food  
HMSA  
Homeworks Construction  
Honolulu Chamber Music Series  
Honolulu Financial Partners, Jeff  
White CFP

Honolulu Habitat for Humanity  
Honolulu Museum of Art  
Honolulu Spa & Wellness  
Honolulu Waldorf School  
Honua Ola Bioenergy  
Hotel Magic  
Huakailani School for Girls

The 'Iao Theater  
IREM (Institute of Real Estate  
Management) Hawai'i Chapter

Japanese Cultural Center of Kona  
Jeff Gere  
Jenkins Eye Care, Dr. Tyrie Jenkins &  
Dr. Jeffrey Peterson  
Johnson Ohana Foundation  
Justin & Janice Shon Foundation

The Kahala Hotel & Resort  
Kāhi Mōhala  
Kahilu Theatre  
Kaiser Permanente  
Kamuela Philharmonic Orchestra  
Keith and Polly Steiner Family  
Foundation  
Kelley O'Neil's  
The Kingston Trio

Kitchen Door Napa Wai Kai  
Kona Stories  
Kumu Kahua Theatre  
Ken & Patty Kupchak, for The Friends  
of Hakalau Forest National Wildlife  
Refuge

La Pietra - Hawai'i School for Girls  
Lahaina Restoration Foundation  
Le Jardin Academy  
Legacy of Life Hawai'i  
Living Breath LLC  
Locations  
Lutheran Church of Honolulu

M by Jeremy Shigekane  
MagicSpace Entertainment  
Magnolia Boutique & Gallery  
Mālama Ola Health Services  
Manoa Valley Theatre  
MASON  
Matson, Inc.  
Maui Academy of Performing Arts  
Maui Arts & Cultural Center  
Maui Chamber Orchestra  
Maui Classical Music Festival  
Maui Ocean Center  
Maui OnStage at The 'Iao Theater  
Maui Pops Orchestra  
Merriman's Restaurants  
Merriman's Fish House, Kaua'i  
Merriman's Gourmet Pizza &  
Burgers, Kauai  
Merriman's Kapalua, Maui  
Merriman's Waimea, Big Island  
Merriman's Ward Village, Honolulu  
Mid-Pacific  
Mobi  
Montessori Community School  
Dr. Peter Mouginiis-Mark, SOEST-  
UH Mānoa

Na Mea Hawai'i  
Nalu Builds

Nareit Hawaii  
National Kidney Foundation of  
Hawai'i  
Native Books Hawai'i  
Nico's Restaurants  
Nico's Kailua  
Nico's Pier 38  
Upstairs at Pier 38  
Nohea Gallery

O'ahu Choral Society  
Obama Hawaiian Africana Museum  
Oceanit  
The Office of Hawaiian Affairs  
Dr. Carlos Omphroy  
Osher Lifelong Learning Institute at  
the University of Hawai'i at Mānoa  
Outdoor Living  
Outrigger Hospitality Group

Pacific American Lumber  
Pacific Financial Navigators  
Pacific Whale Foundation  
Pacxa  
Paiko  
Par Hawaii  
Parents and Children Together  
Parker School  
PCATT, Pacific Center for Advanced  
Technology Training  
Piano Planet  
Pineapple Tweed  
Pua Hana  
Pueo Gallery  
Punahou School

The Queen's Health System

Resource Suites  
RevaComm  
The Rice Partnership  
Richard the Math Tutor  
Ron Artis II  
Royal Hawaiian Center

Ruby Tuesday Hawaii

S2BN  
St. Andrew's Schools  
Dr. Mike & Sharon Scott, for The  
Friends of Hakalau Forest National  
Wildlife Refuge  
SEEQS: the School for Examining  
Essential Questions of Sustainability  
Sierra Club of Hawai'i  
Skog Rasmussen LLC  
State of Hawai'i, Department of  
Health, Executive Office of Aging,  
Hawai'i SHIP  
State of Hawai'i, Department  
of Industrial Relations, Hawaii  
Occupational Safety & Health  
(HIOSH)  
State of Hawai'i, Hawai'i State  
Foundation on Culture & the Arts  
Still & Moving Center  
Sutter Health Kāhi Mōhala

T. Oki Trading  
T S Restaurants  
Kaua'i: Duke's & Keoki's  
Maui: Duke's, Hula Grill,  
Kimo's & Leilani's  
O'ahu: Duke's & Hula Grill  
ThinkTech Hawaii  
Tony Lim CPA  
Tori Richard

UHA Health Insurance  
'ULU Ocean Grill & Sushi Lounge,  
Four Seasons Resort Hualalai  
Ulupono Initiative  
University of Hawai'i at Mānoa  
Kennedy Theatre  
Osher Lifelong Learning Institute  
Outreach College  
The Shidler College of Business  
William S. Richardson School of Law  
University of Hawai'i Foundation

University of Hawai'i Sea Grant  
College Program

Vivia

Waiakea  
Waikoloa Beach Resort  
Waimea Valley, Hi'ipaka LLC  
WDI International  
West Hawaii Dance Theatre &  
Academy  
Wishard Enterprises LLC  
Wishard Gallery

Zippy's Restaurants

## HPR LOCAL TALK SHOW FUND

Anchor Systems Hawaii  
Bavarian Motor Experts  
Chaminade University  
Hastings and Pleadwell  
Honolulu Waldorf School  
Locations  
Na Mea Hawai'i  
Native Books Hawai'i  
PCATT, Pacific Center for Advanced  
Technology Training  
Ulupono Initiative

## AN EVENING WITH THE SPLENDID TABLE'S FRANCIS LAM

FarmLovers Markets  
Culinary Institute of the Pacific

## ATHERTON STUDIO CONCERTS: MELE HAWAII PERFORMANCE SERIES

FarmLovers Markets

## HAWAII SYMPHONY ORCHESTRA BROADCASTS

Furniture Plus Design

# Foundations, Trusts & Charitable Funds

Friend of HPR  
The Arn & Merry Family Friends  
Fund  
Atherton Family Foundation  
Bank of Hawai'i Charitable  
Foundation  
Evalyn M. Bauer Foundation  
Gardner & Patricia Bemis Fund  
Bendon Family Foundation  
The Cades Foundation  
Hung Wo & Elizabeth Ching  
Foundation  
Marilyn & Schuyler Cole Charitable  
Account  
Cooke Foundation  
William & Carol Coops Charitable  
Fund  
Davis Levin Livingston Charitable  
Foundation

Dods Foundation  
Peter G. Drewliner Foundation  
Dick & Mairy Droese Fund  
Claire S. Durham Charitable Fund  
Elias Family Philanthropic Fund  
Engaging the Senses Foundation  
First Hawaiian Bank Foundation  
Foodland Give Aloha  
John R. Halligan Charitable Fund  
Harrison Family Fund  
John Holliday, Jr. Fund  
Hawai'i Community Foundation  
Hawai'i State Foundation on Culture  
& the Arts  
Ifuku Family Foundation  
The Interbeing Universal Fund  
Marianne Stellick Irish Fund  
Island Insurance Foundation  
JK Foundation

Kim Coco Fund for Justice of the  
Iwamoto Family Foundation  
Johnson Ohana Foundation  
Karrels Foundation  
John & Kalowena Komeiji  
Family Fund  
Kosasa Foundation  
KSK Foundation  
Kubota Foundation  
Lahaina Restoration Foundation  
LGA Family Foundation  
Marcelius Charitable Trust  
Mareli Foundation  
Dolores Furtado Martin Foundation  
George Mason Fund  
Matson Foundation  
Regan & Shoshana Matsumura Fund  
May Charitable Fund  
McInerney Foundation

Meshewa Farm Foundation  
Geoffrey Michaelson &  
Lehua li-Michaelson Fund  
O.L. Moore Foundation  
Ng-Warren Trust  
Not Today, Maybe Tomorrow Fund  
Nuestro Futuro Foundation  
Patagonia.com  
Padosi Foundation  
Pacific Whale Foundation  
Louis & Flori Petri Foundation  
Pikake Foundation  
Judith D. Pyle & Wayne M. Pitluck  
Donor Fund  
The Poha Fund  
Gregory Wrenn & Robert Pyburn  
Fund  
R.E.A.P. Foundation  
Justin & Janice Shon Foundation

Jonathan Starr Foundation Inc.  
Nakila & Marti Steele Family Fund  
Stein Family Fund  
Keith & Polly Steiner Family  
Foundation  
Sidney Stern Memorial Trust  
Swayne Family Fund  
Ronald E. & Ivy L. Timpe Fund  
TWANDA Foundation  
Jhamandas Watumull Fund  
Leonora & Joseph Wee Fund  
The Weissman Family Foundation  
Arne & Ruth Werchick Charitable  
Fund  
Western Union Foundation  
G. N. Wilcox Trust  
Ann Marie & Jack C. Wilder  
Charitable Fund



# HPR Leadership & Team

## HPR Board of Directors 2023

<b>CHAIR</b> Francis S. Oda	<b>SECRETARY</b> Konrad Ng	<b>MEMBERS</b> Alan Britten, M.D. Nancy J. Budd (Kaua'i) Jim Burke Jr. Dave DeLuca Mary Fastenau Marcie Uehara Herring	Bryan Kapeckas Cheryl Lupenui (Hawai'i Island) T. Michael May Peter Merriman (Maui) Matt Miller Chuck Mitsui Kenneth S. Robbins	Anne Swayne Dana Tokioka Joe Uno Dr. Bill Wiecking (Hawai'i Island)
<b>VICE CHAIR</b> Kathryn (Kathy) Matayoshi	<b>TREASURER</b> Linda Lee K. (Cissy) Farm			<b>EX-OFFICIO</b> José A. Fajardo, HPR President Kelsie Aguilera, CAB Chair

## Community Advisory Board

<b>CAB CHAIR</b> Kelsie Aguilera, Honolulu, O'ahu	<b>MEMBERS</b> Kevin Chang, Kāne'ohe, O'ahu Cathy Ching, Honolulu, O'ahu Andy Collins, Honoka'a, Hawai'i Island Faith Elarionoff, Hilo, Hawai'i Island James Faumuina, Kapolei, O'ahu Padraic Gallagher, Lihue, Kaua'i	Pat Griffin, Lihue, Kaua'i Kamaka Mahi Gunderson, Pāhoa, Hawai'i Island Lee Imada, Wailuku, Maui Edward Joseph, Kapolei, O'ahu Valerie Koenig, Honolulu, O'ahu Eric Korpi, Kaunakakai, Moloka'i	Pamela Haulani Medeiros, Kailua, O'ahu George Mavrothalassitis, Honolulu, O'ahu Katie Mecklenburg, Wailuku, Maui Angelina Mercado, Honolulu, O'ahu Richard Morris, Honolulu, O'ahu	Nakanaela Nathaniel, Volcano, Hawai'i Island Melissa Will, Kahului, Maui Benjamin Willkie, Kailua, O'ahu
--	--	---	--	---

## Generation Listen

<b>CO-CHAIRS</b> Sylvia Flores Randy Wong	<b>MEMBERS</b> Kelsie Aguilera Alena Auyoung Hailey Berkey	Christopher Edwards Padraic Gallagher Katherine Hernandez Kara Hisatake	David Kamida Leah Lee Katherine Lynch Nainoa Mau	Matt Miller Paige Okamura Asiana Ponciano Daniel Simonich
---	---	--	---	--

## HPR Staff, Hosts & Contributors

<b>SENIOR MANAGEMENT</b> José A. Fajardo, President & General Manager Ray Cruz, Manager of Operations Bill Dorman, Vice President & News Director Cat Gelman, Vice President, Corporate Relations Liberty Peralta, Director of Marketing & Communications Bernadette K.J. Shimono, Vice President, Finance & Controller Nick Yee, Program Director Valerie Yee, Vice President & Assistant General Manager	<b>UNDERWRITING</b> Chikako Epure, Corporate Relations Accounting Assistant Donna Lum, Corporate Relations Administrator Liane Sunn, Corporate Relations Senior Consultant	LOHE Bioacoustics Lab, University of Hawai'i - Hilo Ku'uwehi Hiraishi, General Assignment Reporter Dr. Kathleen Kozak, Host, <i>The Body Show</i> Dave Lawrence, Local Host, <i>All Things Considered; Road Stories; Stargazer</i> Burt Lum, Host, <i>Bytemarks Café</i> Derrick Malama, Local Host, <i>Morning Edition</i> Sophia McCullough, Digital News Producer A. Kam Napier, Editor-in-Chief, Pacific Business News Christopher Phillips, Host, <i>Stargazer</i> Krista Rados, Digital News Producer Russell Subiono, Executive Producer, <i>The Conversation</i> Lillian Tsang, Senior Producer, <i>The Conversation</i> Jason Ubay, Managing News Editor Jackie Young, Local Host, <i>Weekend Edition</i>	<b>MUSIC HOSTS</b> Jon Alan, <i>Blues from the Basement; B-Sides and Beyond</i> Judy Anderson, Classical Music Host Leimomi Bong, <i>Bridging the Gap</i> Roger Bong, <i>Mauka to Makai</i> Ian Capps, <i>The Early Muse</i> Roger County, <i>Bridging the Gap</i> Craig DeSilva, <i>Evening Concert</i> Howard Dicus, <i>Howard's Day Off</i> Charles Husson, <i>Evening Jazz</i> Marc Ito, <i>Bridging the Gap</i> Aisha Kadamatsu, <i>Bridging the Gap</i> Louise Keali'iloma Lanzilotti, <i>Kanikapila Sunday</i> Mike Machado, Local Host, <i>Morning Edition (Fridays)</i> Seth Markow, <i>The Real Deal</i> Paige Okamura, <i>Hawai'i Kulaiwi</i> Gene Schiller, <i>Morning Café/Morning Concert; Sunday Brunch</i> Sharene Lum Taba, <i>Classical Pacific</i> Sandy Tsukiyama, <i>Brazilian Experience</i>	Olivia Waring, <i>Evening Concert</i> Nick Yee, <i>Bridging the Gap</i> John Kalani Zak, <i>Classical Music Host</i>
<b>MEMBERSHIP SERVICES AND DEVELOPMENT</b> Gene Evans, Major Gifts Manager Kyla Herrmann, On-Air Campaign & Community Events Producer Lani Lee, Membership Coordinator Barb Thacker, Membership Coordinator Courtney Thomas, Membership Manager	<b>NEWS/TALK</b> Sabrina Bodon, General Assignment Reporter Catherine Cluett Pactol, Editor-in- Chief, The Molokai Dispatch Catherine Cruz, Host, <i>The Conversation</i> Bill Dorman, Host, <i>Asia Minute</i> Zoe Dym, News Producer Stephanie Han, Producer, <i>The Conversation</i> Casey Harlow, General Assignment Reporter Savannah Harriman-Pote, General Assignment Reporter Patrick Hart, Host, <i>Manu Minute</i> ,			<b>ADMINISTRATION AND OPERATIONS</b> Sabiniana Baliba, Accounting Clerk Ananddev Banerjee, Multimedia Producer David Chong, Board Operator Sylvia Flores, Marketing Digital Content Producer Thomas Hamasaki, Board Operator Kevin Hashiro, Board Operator Charles Husson, Director of Facilities Mike Machado, Board Operator Bob Morgenweck, Board Operator Leon Naldo, Board Operator Maggie Ryan, Administrative Assistant/Front Desk Krystal Spear, Board Operator Bonnie Trustin, Front Desk/Reception Mia Yoshimoto, Administrative Assistant



738 Kāheka St. Suite 101  
Honolulu, HI 96814-3726

NONPROFIT  
ORGANIZATION  
U.S. POSTAGE  
**PAID**  
HONOLULU, HI  
PERMIT NO. 1459

# Keeping You Connected

No matter where you are or what you're doing, there's a way to stay tuned to HPR.



## WEBSITE

Go to [hawaiipublicradio.org](http://hawaiipublicradio.org)  
and look for the player module  
near the top of the page.



## SMART SPEAKERS

HPR-1: say  
"play Hawai'i Public Radio."  
HPR-2: say "play KIPO."



## CABLE TV

On Spectrum channels  
864 and 865



## APP

HPR's mobile app streams HPR-1  
and HPR-2, and integrates with  
Apple CarPlay and Android Auto.



## PODCASTS

*The Conversation, Body Show,  
Bytemarks Café, Manu Minute,  
Road Stories*



## RADIO

And of course, you can tune  
in the old fashioned way.