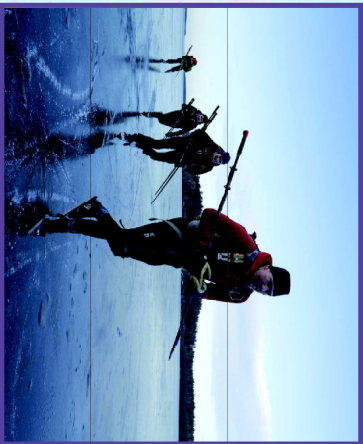


# Q2.3

Program Guide KENW-TV/FM  
Eastern New Mexico University  
May 2023



Just three weeks after they're born, baby grey seals (*Halichoerus grypus*) are abandoned by their mothers on a remote rocky island in Sweden.



In Sweden, a group of skaters search for black ice: freshly formed ice only just thick enough to hold a skater's weight that is perfectly



The Northern Lights, also known as the Aurora Borealis, light up the winter skies in Northern Iceland.

## *Wild Scandinavia*

This breathtaking natural history series immerses the audience in three iconic Scandinavian landscapes: the hauntingly beautiful coast, the magical seasonal forests and the volcanic and arctic extremes.

Wed 7pm begins 10th (3-2)  
Sat 11pm begins 13th (3-2)

Wed 9pm begins 10th (3-1)  
Thu 2pm begins 11th (3-1)  
Sat 4pm begins 13th (3-1)



Sun 7th at 2pm (3-2)  
Tue 9th at 8pm (3-2)

Fri 19th at 9pm (3-1)

ANAHITA tells the story of an Afghan refugee who evacuated Kabul in the summer of 2021 with her five children. The film details her harrowing escape from Afghanistan: getting to the airport, climbing over barbed wire fencing, nearly being shot by the Taliban, and trying to keep her children safe.

Anahita was a police officer in Kabul who fled after being tipped-off that the Taliban was looking for her. The film follows Anahita and her children as they settle into a new home in Minneapolis with the help of a sponsor, and cope with the challenges of living in a new country without familiar support systems or knowledge of the language.

# IN MEMORIAM

**Duane W. Ryan**

**May 23, 1932–April 6, 2023**

Duane W. Ryan was released from his earthly body in the early morning hours of April 6, 2023 at his home in Portales, New Mexico. He lived 90 strong and vibrant years until pancreatic cancer overcame him in the last few months. He faced his impending death with grace, humor, dignity and especially gratitude for his beautiful life.

Here was a man who constantly thought of others, putting their needs before his own. Actively serving others was the theme of his life; his family, friends, colleagues, students, his church community and the community at large were recipients of his unbounded kindness.

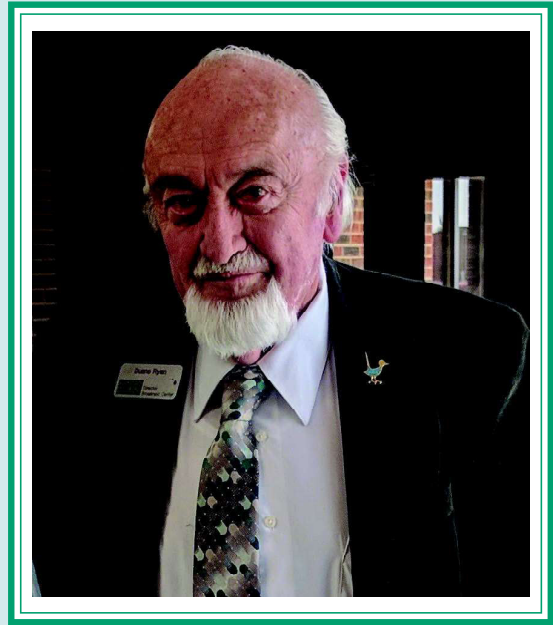
Duane was the eldest child of Donald and Evelyn Ryan. He was born in Hermosa Beach and raised in Hawthorne, California (where he first developed his love of tacos). He traveled each summer to Heber, Utah where he stayed with his grandparents and uncles and learned to work on the family farm. His parents sent their “little man” on his first trip at the tender age of six when he traveled from Los Angeles to Heber, solo on the train.

He attended El Camino Junior College in Torrance, California, where he was elected student body president. He later transferred to Brigham Young University in Provo Utah, earning both a BA and Master’s Degree in Speech and Dramatic Arts.

Duane served in the Air Force for two years, stationed in Alaska. He worked in intelligence learning the Russian language as part of his post.

During his college days in California, Duane owned and worked at a franchise called Foster’s Freeze. One afternoon while selling ice cream he was introduced to a stunning red-headed woman, Martha Ann Christensen. They married on April 3, 1959 in the Salt Lake City, Utah temple of the Church of Jesus Christ of Latter-Day Saints. Both were key figures in the theater department at BYU, performing in many plays together. After graduation, the newlyweds moved to Ephraim, Utah–( it wasn’t easy to find a good taco there in the 1960’s). Duane taught at Snow College in the Theater and Communications department and Martha used her superb sewing skills building costumes for the productions. Four of their five children were born while living there in Sanpete County.

ENMU beckoned in 1967 and Duane moved his brood to the high plains of Eastern New Mexico, (unlimited supply of the best tacos)! He began as an assistant professor in theater and speech, directing many plays and teaching courses in speech and communications. Duane soon combined his technological savvy and his love of the arts to create KENW- FM, Public Radio on the ENMU campus, collaborating with a core group of talented and dedicated co-workers. Many of these “old timers” have been with the organization ever since and have been life-long friends. Duane and Martha’s fifth child was born in 1973, one year before the debut of KENW-TV, Channel 3, part of the newly minted Public Broadcasting System.



There are scores of professional journalists and broadcasters who launched their careers at KENW. “Mr. Ryan worked tirelessly and passionately to bring public media into the homes of those folks {local viewers} because he knew that high quality news and educational television inspired and elevated others, it mattered. He did a little of everything around the station, was the first to show up and the last to leave, and led by example in everything he did,” writes former student Paul Hunton, now President and General Manager of WUNC, Public Broadcasting in North Carolina.

Although he avoided the spotlight at all costs, he received many accolades and honors. In 2015 Duane was inducted into the New Mexico Broadcasters’ Hall of Fame. He was more famous among family and friends for his ability to eat a plate of the hottest jalapeños without a tear in his eye.

KENW has been his life’s work. A few days before he died, he joined the regular Monday staff meeting by telephone and worked remotely on his laptop.

Duane is survived by his wife of 64 years, Martha Ryan, his children Tamara Ryan Polich (Steve Polich), Michael Ryan, (Rebecca Ryan), Marla Ryan Chrisman, (Brad Chrisman), John Ryan, (Shan Ryan), David Ryan (Donna Daymon Ryan), KENW-TV/FM (his favorite child), eighteen grandchildren, eleven great-grandchildren, sister Connie Ryan Chapman, and dear co-workers who have become like family. He is predeceased by his brother Calvin Ryan, and great-grandson Declan Emmet Carroll.

A family graveside service will be held in the Heber City Cemetery, Heber, Utah.

A public memorial service will take place on his 91st birthday, Tuesday, May 23, 2023 in the ENMU Campus Union Ballroom at 2:30 pm.

In lieu of flowers, the family suggests that contributions be made to KENW Broadcast Center, 1500 S. Avenue K, Station 52, Portales, NM 88130.

by Tamara Ryan



# Primetime on KENW-TV

## Monday 1st

6:00	3-2	<b>PBS NewsHour</b>
	3-1	<i>PBS NewsHour</i>
7:00	3-2	<b>Antiques Roadshow</b>
	3-1	<i>Spiritual Audacity</i>
8:00	3-2	<b>Antiques Roadshow</b> "Orlando"
	3-1	<i>Independent Lens</i> "Matter of Mind: My ALS"
9:00	3-2	<b>Independent Lens</b> "Matter of Mind: My ALS"
	3-1	<i>Antiques Roadshow</i>
	3-3	<i>Call the Midwife</i>
10:00	3-2	<b>World's Greatest Cemeteries</b>
		"Woodlawn Cemetery, Bronx, NY"
	3-1	<i>Amanpour and Company</i>
	3-3	<i>Masterpiece</i> "Tom Jones"
10:30	3-2	<b>Texas Parks and Wildlife</b>
11:00	3-2	<b>Antiques Roadshow</b>
	3-1	<i>PBS NewsHour</i>
	3-3	<i>Marie Antoinette</i>
12:00	3-2	<b>PBS NewsHour</b>
	3-1	<i>Independent Lens</i> "Matter of Mind"
	3-3	<i>Chef's Life</i>

## Tuesday 2nd

6:00	3-2	<b>PBS NewsHour</b>
	3-1	<i>PBS NewsHour</i>
7:00	3-2	<b>Finding Your Roots</b> "Against All Odds"
	3-1	<i>Grandpa's War Story Goes Viral</i>
8:00	3-2	<b>My Grandparents' War</b> "Emeli Sande"
	3-1	<i>My Grandparents' War</i>
9:00	3-2	<b>You Should Know</b>
	3-1	<i>Finding Your Roots</i>
	3-3	<i>Antiques Roadshow</i>
9:30	3-2	<b>Creative Living</b>
10:00	3-2	<b>New Leash on Life: K9S for Warriors Story</b>
	3-1	<i>Amanpour and Company</i>
	3-3	<i>History Detectives</i>
11:00	3-2	<b>Amanpour and Company</b>
	3-1	<i>PBS NewsHour</i>
	3-3	<i>Nature</i>
12:00	3-2	<b>PBS NewsHour</b>
	3-1	<i>Rising Against Asian Hate</i>
	3-3	<i>America's Heartland</i>

## Wednesday 3rd

6:00	3-2	<b>PBS NewsHour</b>
	3-1	<i>PBS NewsHour</i>
7:00	3-2	<b>Nature</b> "Attenborough's Wonder of Song"
	3-1	<i>Unsettled History: America, China and the Doolittle Tokyo Raid</i>
8:00	3-2	<b>Nova</b> "Saving the Right Whale"
	3-1	<i>Iconic America: Our Symbols and Signs</i>
9:00	3-2	<b>Iconic America: Our Symbols and Signs</b> "The Hollywood Sign"
	3-1	<i>Nature</i> "Attenborough's Wonder of Song"
	3-3	<i>Finding Your Roots</i>
10:00	3-2	<b>Medical Frontiers</b> "Vitamin C: The Key to Health"
	3-1	<i>Amanpour and Company</i>
	3-3	<i>To Dine For</i>
10:30	3-2	<b>This Old House</b> "Ipswich: Rebuilding Centuries"
	3-3	<i>Curious Traveler</i>
11:00	3-2	<b>Amanpour and Company</b>
	3-1	<i>PBS NewsHour</i>
	3-3	<i>Travels with Darley</i>
11:30	3-3	<i>Rick Steves' Europe</i>
12:00	3-2	<b>PBS NewsHour</b>
	3-1	<i>Nova</i> "Saving the Right Whale"
	3-3	<i>People of the North</i>

## Thursday 4th

6:00	3-2	<b>PBS NewsHour</b>
	3-1	<i>PBS NewsHour</i>
7:00	3-2	<b>Passage to Sweden</b>
	3-1	<i>Making Waves: The Art of Cinematic Sound</i>
8:00	3-2	<b>Song of the Mountains</b> "Carson Peters & Iron Mountain"
8:30	3-1	<i>You Should Know</i>

9:00	3-2	<b>SportsLook</b>
	3-1	<i>Creative Living</i>
	3-3	<i>This American Land</i>
9:30	3-2	<b>Red Green Show</b> "High School Reunion"
	3-1	<i>SportsLook</i>
	3-3	<i>Outside: Beyond the Lens</i>
10:00	3-2	<b>Songs at the Center</b>
	3-1	<i>Amanpour and Company</i>
	3-3	<i>Nature</i>
10:30	3-2	<b>Bands of Enchantment</b>
		"Flor de Toloache"
11:00	3-2	<b>Amanpour and Company</b>
	3-1	<i>PBS NewsHour</i>
	3-3	<i>Nova</i>
12:00	3-2	<b>PBS NewsHour</b>
	3-1	<i>Chavis Chronicles</i>
	3-3	<i>Healthy Minds</i>

## Friday 5th

6:00	3-2	<b>PBS NewsHour</b>
	3-1	<i>PBS NewsHour</i>
7:00	3-2	<b>Market to Market</b>
	3-1	<i>Washington Week</i>
7:30	3-2	<b>Consuelo Mack Wealthtrack</b>
	3-1	<i>Firing Line with Margaret Hoover</i>
8:00	3-2	<b>Washington Week</b>
	3-1	<i>Nova</i> "Saving the Right Whale"
8:30	3-2	<b>Firing Line with Margaret Hoover</b>
9:00	3-2	<b>Articulate Hour</b> "Partial Recall," Pt. 1
	3-1	<i>Rising Against Asian Hate</i>
	3-3	<i>This Old House</i>
9:30	3-3	<i>Ask This Old House</i>
10:00	3-2	<b>Articulate Hour</b> "Together/Alone," Pt. 2
	3-1	<i>Amanpour and Company</i>
	3-3	<i>American Woodshop</i>
10:30	3-3	<i>Woodsmith Shop</i>
11:00	3-2	<b>Iconic America: Our Symbols and Signs</b> "Fenway Park"
	3-1	<i>PBS NewsHour</i>
	3-3	<i>Joy of Painting</i>
11:30	3-3	<i>Garage with Steve Butler</i>
12:00	3-2	<b>PBS NewsHour</b>
	3-1	<i>Seaside Hotel</i>
	3-3	<i>Start Up</i>

## Saturday 6th

6:00	3-2	<b>Report from Santa Fe</b>
	3-1	<i>Antiques Roadshow</i>
6:30	3-2	<b>America's Heartland</b>
7:00	3-2	<b>Lawrence Welk Show</b> "Spring"
	3-1	<i>Articulate Hour, Pt. 1</i>
8:00	3-2	<b>People of the North</b> "Cod from Lofoten"
	3-1	<i>Articulate Hour, Pt. 2</i>
8:30	3-2	<b>Red Green Show</b> "The Poker Game"
9:00	3-2	<b>Austin City Limits</b> "The Mavericks: En Espanol"
	3-1	<i>Caverns Sessions</i>
	3-3	<i>Lawrence Welk Show</i>
9:30	3-1	<i>Bands of Enchantment</i>
10:00	3-2	<b>Nova</b> "Saving the Right Whale"
	3-1	<i>Austin City Limits</i> "The Mavericks: En Espanol"
	3-3	<i>Classic Gospel</i>
11:00	3-2	<b>Nature</b> "Attenborough's Wonder of Song"
	3-1	<i>Nova</i> "Saving the Right Whale"
	3-3	<i>Woodsongs</i>
12:00	3-2	<b>Austin City Limits</b> "The Mavericks: En Espanol"
	3-1	<i>Nature</i> "Attenborough's Wonder of Song"
	3-3	<i>Song of the Mountains</i>

## Sunday 7th

6:00	3-1	<i>Call the Midwife</i>
7:00	3-2	<b>Call the Midwife</b> , Pt. 8
	3-1	<i>Masterpiece</i> "Tom Jones"
8:00	3-2	<b>Masterpiece</b> "Tom Jones," Pt. 2
	3-1	<i>Marie Antoinette</i>
9:00	3-2	<b>Marie Antoinette</b> "Queen of Hearts"
	3-1	<i>Passage to Sweden</i>
	3-3	<i>Daytripper</i>
9:30	3-3	<i>America's Heartland</i>

10:00	3-2	<b>Love, Inevitably</b> , Pt. 10
	3-1	<i>Culture Quest: Ukraine</i>
	3-3	<i>This Old House</i>
10:30	3-3	<i>Ask This Old House</i>
11:00	3-2	<b>My Grandparents' War</b> "Emeli Sande"
	3-1	<i>Reel South</i>
	3-3	<i>Motorweek</i>
11:30	3-3	<i>Texas Parks and Wildlife</i>
12:00	3-2	<b>Nova</b> "Saving the Right Whale"
	3-1	<i>Masterpiece</i> "Tom Jones"
	3-3	<i>Nature</i>

## Monday 8th

6:00	3-2	<b>PBS NewsHour</b>
	3-1	<i>PBS NewsHour</i>
7:00	3-2	<b>Antiques Roadshow</b>
		"Shelburne Museum," Pt. 3
	3-1	<i>New Leash on Life: K9S for Warriors</i>
8:00	3-2	<b>Antiques Roadshow</b> "Orlando," Pt. 3
	3-1	<i>Boblo Boats: A Detroit Ferry Tale</i>
9:00	3-2	<b>Independent Lens</b> "Sam Now"
	3-1	<i>Antiques Roadshow</i>
	3-3	<i>Call the Midwife</i> , Pt. 8
10:00	3-1	<i>Amanpour and Company</i>
	3-3	<i>Masterpiece</i> "Tom Jones"

## INDEPENDENT LENS

### Matter of Mind: My ALS

"Matter of Mind: My ALS" on **Independent Lens** follows three people living with amyotrophic lateral sclerosis (ALS), or Lou Gehrig's disease, and explores the different paths they choose as they live with this progressively debilitating illness. The average survival time is 2-5 years from diagnosis.

**Mon 1st at 9pm (3-2)**  
**Mon 1st at 8pm (3-1)**

## Sam Now

What happens when a boy and his brother go in search of his missing mother?

"Sam Now" on **Independent Lens** follows Sam Harkness from age 11 to 36 as his once average, middle class Seattle family is heartbroken and unsure of what to do after his mother suddenly leaves them.

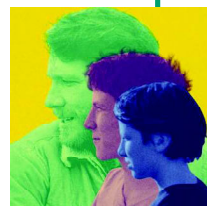
The film explores inter-generational trauma.

**Mon 8th at 9pm (3-2)**

## Silent Beauty

For 24 years, Jasmin Mara López suffered in silence as she endured sexual abuse by her grandfather, a Baptist minister. Her poignant film "Silent Beauty" on **Independent Lens** addresses our society's default to silence while it explores the complicated journey for López and her family as they reckon with their trauma, fight for justice against their abuser, and find beauty in the healing process.

**Mon 15th at 9pm (3-2)**



# KENW-TV SCHEDULES 3-1 (HD), 3-2 (HD) AND 3-3 (SD)

KENW-TV considers Channel 3-2 to be its "main" channel and is listed below in bold. Channel 3-2 is carried by most TV cable systems in eastern New Mexico. Schedule 3-1 can be seen on the HD services of some cable companies. 3-3 is our Children's/Encore Channel (SD) and 3-4 is our FNX Channel (First Nations Experience).

KENW-TV's 3-1 schedule (below in italics) is carried by DirecTV and Dish Network in most counties of New Mexico.

KENW-TV's 3-3 schedule (below in italics) can only be seen over the air with an antenna.

The schedule for KENW-TV's 3-4 FNX Channel is available at <https://fnx.org/schedule/>.

Those using antennas can receive all four channels in the following cities: Clovis/Portales; Hobbs/Lovington; Roswell; Artesia; Ft. Sumner; Tucumcari; Carlsbad; Ruidoso; Mescalero.

KENW-TV digital transmitters are located in: Artesia; Carlsbad; Ft. Sumner; Hobbs; Portales/Clovis; Roswell; Tucumcari; Ruidoso; Mescalero

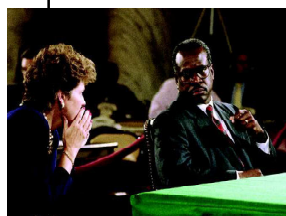
## FRONTLINE

### Secrets, Politics and the Supreme Court

Frontline examines the power and influence of Clarence and Ginni Thomas on the

Supreme Court and American politics. The investigation looks at the controversial rise of one of Washington's most powerful couples,

and their role in reshaping the country's politics



**Tue 9th at 10pm (3-2)**  
**Thu 11th at 7pm (3-2)**  
**Fri 12th at 9pm (3-1)**

10:30 3-2 **Texas Parks and Wildlife**

11:00 3-2 **Antiques Roadshow**

3-1 *PBS NewsHour*

3-3 *Marie Antoinette, Pt. 8*

12:00 3-2 **PBS NewsHour**

3-1 *Independent Lens "Sam Now"*

3-3 *Chef's Life*

### Tuesday 9th

6:00 3-2 **PBS NewsHour**

3-1 *PBS NewsHour*

7:00 3-2 **Finding Your Roots**

*"The Shirts on Their Backs"*

3-1 *Unconditional: Healing Hidden Wounds*

8:00 3-2 **Anahita – A Mother's Journey**

8:30 3-1 *Little But Fierce*

9:00 3-2 **You Should Know**

3-1 *Finding Your Roots*

3-3 *Antiques Roadshow*

9:30 3-2 **Creative Living**

10:00 3-2 **Frontline "Secrets, Politics and the Supreme Court"**

3-1 *Amanpour and Company*

3-3 *History Detectives*

11:00 3-2 **Amanpour and Company**

3-1 *PBS NewsHour*

3-3 *Nature*

12:00 3-2 **PBS NewsHour**

3-1 *Frontline "Secrets, Politics and the Supreme Court"*

3-3 *America's Heartland*

### Wednesday 10th

6:00 3-2 **PBS NewsHour**

3-1 *PBS NewsHour*

7:00 3-2 **Wild Scandinavia "Life on the Edge"**

3-1 *Armed with Language*

8:00 3-2 **Nova "Hidden Volcano Abyss"**

3-1 *Iconic America: Our Symbols and Signs*

9:00 3-2 **Iconic America: Our Symbols and Signs "The Gadsden Flag"**

3-1 *Wild Scandinavia, Pt. 1*

3-3 *Finding Your Roots*

10:00 3-2 **Medical Frontiers "Virtual Reality's Potential"**

3-1 *Amanpour and Company*

3-3 *To Dine For*

10:30 3-2 **This Old House "Ipswich: Exposing Problems"**

3-3 *People of the North*

11:00 3-2 **Amanpour and Company**

3-1 *PBS NewsHour*

3-3 *Travels with Darley*

11:30 3-3 *Rick Steves' Europe*

12:00 3-2 **PBS NewsHour**

3-1 *Nova "Hidden Volcano Abyss"*

3-3 *People of the North*

### Thursday 11th

6:00 3-2 **PBS NewsHour**

3-1 *PBS NewsHour*

7:00 3-2 **Frontline "Secrets, Politics and the Supreme Court"**

3-1 *My Music with Rhiannon Giddens*

7:30 3-1 *Trolley Park: Midway Memories*

8:00 3-2 **Song of the Mountains "Broken Angels"**

3-1 *Red Green Show*

8:30 3-1 *You Should Know*

9:00 3-2 **Epic Trails "Banff & Lake Louise"**

3-1 *Creative Living*

3-3 *This American Land*

9:30 3-2 **Red Green Show "Harold's Wheels"**

3-1 *Epic Trails*

3-3 *Outside: Beyond the Lens*

10:00 3-2 **Songs at the Center "Molly Tuttle"**

3-1 *Amanpour and Company*

3-3 *Wild Scandinavia, Pt. 1*

10:30 3-2 **My Music with Rhiannon Giddens "Old Friends," Pt. 1**

11:00 3-2 **Amanpour and Company**

3-1 *PBS NewsHour*

3-3 *Nova*

12:00 3-2 **PBS NewsHour**

3-1 *Chavis Chronicles*

3-3 *Healthy Minds*

### Friday 12th

6:00 3-2 **PBS NewsHour**

3-1 *PBS NewsHour*

7:00 3-2 **Market to Market**

3-1 *Washington Week*

7:30 3-2 **Consuelo Mack Wealthtrack**

3-1 *Firing Line*

8:00 3-2 **Washington Week**

3-1 *Nova "Hidden Volcano Abyss"*

8:30 3-2 **Firing Line**

9:00 3-2 **Great Performances "Celebrating 50 Years of Broadway's Best"**

3-1 *Frontline "Secrets, Politics and the Supreme Court"*

3-3 *This Old House*

9:30 3-3 *Ask This Old House*

10:00 3-1 *Amanpour and Company*

3-3 *American Woodshop*

3-3 *Woodsmith Shop*

10:30 3-2 **Schille** (a largely forgotten yet world-renowned artist at the turn of the 20th century—Alice Schille, watercolorist)

11:00 3-2 **Iconic America: Our Symbols and Signs "The Hollywood Sign"**

3-1 *PBS NewsHour*

3-3 *Joy of Painting*

11:30 3-3 *Garage with Steve Butler*

12:00 3-2 **PBS NewsHour**

3-1 *Seaside Hotel*

3-3 *Start Up*

## UNCONDITIONAL: Healing Hidden Wounds

### Unconditional: Healing Hidden Wounds

is a revealing film about the arc of mental health that challenges 50 million families each year. From Executive Producers Maria Shriver and Montel Williams, three families set off on a seven-year journey of self-discovery, taking on the most emotional topics of our day—physical and mental health.

Kate, a mental health expert, now faces her biggest challenge—preparing herself, her husband, and her 5-year-old son for her terminal cancer diagnosis. She is practicing what she preached so well in her trainings.

Stephen, who spent his career caring for senior citizens as a social worker and pastor, now battles his eighth year of Alzheimers. And like Kate, boldly has to practice what he preached. His wife and children are by his side facing their own struggles to do the right thing.

Luke is a US war veteran whose memories of Afghanistan linger in his day-to-day life. Luke's young sons try to understand why their hero sometimes loses his temper while his wife Amy shares the struggles each of them face.

**Sun 7th at 5:30pm (3-2)**

**Mon 22nd at 8pm (3-2)**

**Tue 9th at 7pm (3-1)**



## Saturday 13th

6:00	3-2	Report from Santa Fe
	3-1	Antiques Roadshow
6:30	3-2	America's Heartland
7:00	3-2	Lawrence Welk Show "Mother's Day"
	3-1	Great Performances "Celebrating 50 Years of Broadway's Best"
8:00	3-2	People of the North
		"The Beautiful West"
8:30	3-2	Red Green Show "The Drill"
	3-1	One Voice: The Songs We Share
9:00	3-2	Austin City Limits "Rufus Wainwright"
	3-1	Caverns Sessions
	3-3	Lawrence Welk Show
9:30	3-1	Bands of Enchantment
10:00	3-2	Nova "Hidden Volcano Abyss"
	3-1	Austin City Limits
	3-3	Classic Gospel
11:00	3-2	Wild Scandinavia "Life on the Edge," Pt. 1
	3-1	Nova "Hidden Volcano Abyss"
	3-3	Woodsongs
12:00	3-2	Austin City Limits "Rufus Wainwright"
	3-1	Wild Scandinavia, Pt. 1
	3-3	Song of the Mountains

## Sunday 14th

6:00	3-2	Pack Horse Librarians of Appalachia
	3-1	Lucy Worley's Royal Myths & Secrets "Elizabeth I: The Warrior Queen"
6:30	3-2	Great Performances "Celebrating 50 Years of Broadway's Best"
7:00	3-1	Masterpiece "Tom Jones"
8:00	3-2	Masterpiece "Tom Jones, Pt. 2"
	3-1	Lucy Worley's Royal Myths & Secrets "Marie Antoinette"
9:00	3-2	Lucy Worsley's Royal Myths and Secrets "Marie Antoinette: The Doomed Queen"
	3-1	Great Performances at the Met "Fedora"
	3-3	Daytripper
9:30	3-3	America's Heartland
10:00	3-2	Art21: Art in the Twenty-First Century "Everyday Icons"
	3-3	This Old House
10:30	3-3	Ask This Old House
11:00	3-2	Finding Your Roots "Criminal Kind"
	3-1	Reel South
	3-3	Motorweek
11:30	3-3	Texas Parks and Wildlife
12:00	3-2	Nova "Hidden Volcano Abyss"
	3-1	Masterpiece "Tom Jones"
	3-3	Wild Scandinavia, Pt. 1

## Monday 15th

6:00	3-2	PBS NewsHour
	3-1	PBS NewsHour
7:00	3-2	Antiques Roadshow "Junk in the Trunk"
	3-1	When We Were Shuttle
8:00	3-2	Antiques Roadshow "Spokane"
9:00	3-2	Independent Lens "Silent Beauty"
	3-1	Antiques Roadshow
	3-3	Lucy Worley's Royal Myths & Secrets "Elizabeth I: The Warrior Queen"
10:00	3-1	Amanpour and Company
	3-3	Masterpiece "Tom Jones"
10:30	3-2	Texas Parks and Wildlife
11:00	3-2	Antiques Roadshow "Junk in the Trunk,"
	3-1	PBS NewsHour
	3-3	Lucy Worsley's Royal Myths & Secrets
12:00	3-2	PBS NewsHour
	3-1	Independent Lens "Silent Beauty"
	3-3	Chef's Life

## Tuesday 16th

6:00	3-2	PBS NewsHour
	3-1	PBS NewsHour
7:00	3-2	Finding Your Roots "Things We Don't Discuss"
	3-1	American Masters
8:00	3-2	American Masters "Nam June Paik: Moon is the Oldest"
	3-1	Finding Your Roots
9:00	3-3	Antiques Roadshow

# 3-2 WEEKEND SCHEDULE

## How-to's and Family Viewing

### Saturdays

6:00 am	American Woodshop
6:30 am	Epic Trails
7:00 am	Cook's Country
7:30 am	Life of Loi (ends 6th)
	Ciao Italia (begins 13th)
8:00 am	America's Test Kitchen
8:30 am	Lidia's Kitchen
9:00 am	Sara's Weeknight Meals (ends 6th)
	Ellie's Real Food (begins 13th)
9:30 am	Motorweek
10:00 am	Family Plot
10:30 am	Garden Smart
11:00 am	Paint This with Jerry Yarnell
11:30 am	Joy of Painting
12:00 pm	Painting & Travel
12:30 pm	Quilt in a Day
1:00 pm	Quilting Arts
1:30 pm	Fons & Porter's Love of Quilting
2:00 pm	Creative Living
2:30 pm	Jazzy Vegetarian
3:00 pm	Knit & Crochet Now
3:30 pm	This Old House
4:00 pm	Ask This Old House
4:30 pm	Welcome to my Studio
5:00 pm	Sewing with Nancy
5:30 pm	Fit 2 Stitch
6:00 pm	Report from Santa Fe
6:30 pm	America's Heartland

### Sundays

6:00 am	Painting & Travel
6:30 am	Samantha Brown's Places to Love
7:00 am	Antiques Roadshow
8:00 am	Classic Gospel
9:00 am	Joy of Music
9:30 am	Music & the Spoken Word
10:00 am	My Grandfathers' War (ends 7th)
	Finding Your Roots (begins 14th)
11:00 am	New Mexico in Focus
12:00 pm	Pati's Mexican Table
12:30 pm	Texas Parks & Wildlife
1:00 pm	Epic Trails
1:30 pm	Closer to Truth
2:00 pm	Anahita—A Mother's Journey (7th)
	Great Performances at the Met "Fedora" (14th)
	Iconic America (begins 21st)
3:00 pm	Innovations in Medicine (except 14th)
3:30 pm	Medical Stories
4:00 pm	Classic Gospel
5:00 pm	You Should Know
5:30 pm	Unconditional: Healing Hidden Wounds (7th)
	Travel Detective (begins 14th)
6:00 pm	Pack Horse Librarians of the Appalachia (14th)
	Medici: The Art of Power (21st)
	Tuskegee Airmen: Return to Ramitelli (28th)
6:30 pm	Great Performances "Celebrating 50 Years of Broadway's Best" (14th)
	Making Waves: The Art of Cinematic Sound (21st)



10:00	3-2	Legends of the Sky: The Liberty Plane
	3-1	Amanpour and Company
	3-3	History Detectives
11:00	3-2	Amanpour and Company
	3-1	PBS NewsHour
	3-3	Wild Scandinavia, Pt. 1
12:00	3-2	PBS NewsHour
	3-1	Anahita - A Mother's Journey
	3-3	America's Heartland

11:30	3-3	Rick Steves' Europe
12:00	3-2	PBS NewsHour
	3-1	Nova "Your Brain: Perception Deception"
	3-3	People of the North

## Wednesday 17th

6:00	3-2	PBS NewsHour
	3-1	PBS NewsHour
7:00	3-2	Wild Scandinavia, Pt. 2
	3-1	Norman Mineta and His Legacy
8:00	3-2	Nova "Your Brain: Perception Deception"
8:00	3-1	Iconic America: Our Symbols and Signs
9:00	3-2	Iconic America: Our Symbols and Signs "The Cowboy"
	3-1	Wild Scandinavia, Pt. 2
	3-3	Finding Your Roots
10:00	3-2	Medical Frontiers "Transforming Ophthalmology"
	3-1	Amanpour and Company
	3-3	To Dine For
10:30	3-2	This Old House "IPSwich: First Things First"
	3-3	People of the North
11:00	3-2	Amanpour and Company
	3-1	PBS NewsHour
	3-3	Travels with Darley

## YOUR BRAIN: PERCEPTION DECEPTION

NOVA



Are you in control of your brain, or is your brain controlling you? Join neuroscientist Heather Berlin on a quest to understand how your brain shapes your reality, and why you can't always trust what you perceive. Dive into the latest research on the subconscious to see what's really driving the decisions you make, and learn the surprising tricks and shortcuts the brain takes to help us survive.

# KENW-TV'S DAYTIME SCHEDULES

## Kids' Programming, How-to's and Family Viewing

KENW-TV, Channel 3-4, Schedule for FNX available at [fnx.org/schedule](http://fnx.org/schedule).

### Channel 3-2

#### Monday through Friday

5:30 am	Wai Lana Yoga
6:00 am	Classical Stretch
6:30 am	BBC World News
7:00 am	Wild Kratts
7:30 am	Curious George
8:00 am	Daniel Tiger's Neighborhood
8:30 am	Rosie's Rules
9:00 am	Sesame Street
9:30 am	Work It Out Wombats!
10:00 am	Donkey Hodie
10:30 am	Pinkalicious & Peterrific
11:00 am	Cook's Country (M)
	America's Test Kitchen (Tu)
	Fishing Behind The Lines (W)
	Lidia's Kitchen (Th)
	SciGirls (F)
11:30 am	Pati's Mexican Table (M)
	Knit and Crochet Now (Tu)
	American Woodshop (W)
	Ciao Italia (Th)
	Mister Rogers (F)
12:00 pm	Sit and Be Fit (MWF)
	Creative Living (TuTh)
12:30 pm	J. Schwanke's Life in Bloom (M)
	It's Sew Easy (Tu)
	Fons & Porter's Love of Quilting (W)
	Welcome to My Studio (Th)
	Painting and Travel (F)
1:00 pm	Elinor Wonders Why
1:30 pm	Nature Cat
2:00 pm	Hero Elementary
2:30 pm	Molly of Denali
3:00 pm	Alma's Way
3:30 pm	Arthur
4:00 pm	Odd Squad
4:30 pm	Gzero World with Ian Bremmer (M)
	Moveable Feast (Tu)
	Jazzy Vegetarian (W)
	Journeys In Japan (Th)
	Wild Rivers with Tillie (F) (ends 19)
	Epic Trails (F) (begins 26th)
5:00 pm	Washington Week (M)
	Christopher Kimball's Milk Street (Tu)
	Start Up (W)
	Medical Frontiers (Th) (ends 18th)
	Healthy Minds (Th) (begins 25th)
	Travel Detective (F)
5:30 pm	BBC World News America

#### Monday through Friday

5:00 am	Molly of Denali
5:30 am	Alma's Way
6:00 am	Wild Kratts
6:30 am	Curious George
7:00 am	Daniel Tiger's Neighborhood
7:30 am	Rosie's Rules
8:00 am	Sesame Street
8:30 am	Work It Out Wombats!
9:00 am	Donkey Hodie
9:30 am	Pinkalicious & Peterrific
10:00 am	Elinor Wonders Why
10:30 am	Nature Cat
11:00 am	Hero Elementary
11:30 am	Xavier Riddle and the Secret Museum
12:00 pm	Daniel Tiger's Neighborhood
12:30 pm	Rosie's Rules
1:00 pm	Sesame Street
1:30 pm	Work It Out Wombats!
2:00 pm	Donkey Hodie
2:30 pm	Pinkalicious & Peterrific
3:00 pm	Elinor Wonders Why
3:30 pm	Nature Cat
4:00 pm	Hero Elementary
4:30 pm	Xavier Riddle and the Secret Museum
5:00 pm	Sesame Street
5:30 pm	Daniel Tiger's Neighborhood
6:00 pm	Molly of Denali
6:30 pm	Clifford The Big Red Dog
7:00 pm	Super Why!
7:30 pm	Wordgirl
8:00 pm	Arthur
8:30 pm	Odd Squad



Nature Cat

### Channel 3-3

#### Saturday

5:00 am	Molly of Denali
5:30 am	Mister Rogers
6:00 am	Wild Kratts
6:30 am	Curious George
7:00 am	Work It Out Wombats!
7:30 am	Daniel Tiger's Neighborhood
8:00 am	Sesame Street
8:30 am	Rosie's Rules
9:00 am	Donkey Hodie
9:30 am	Pinkalicious & Peterrific
10:00 am	Dinosaur Train
10:30 am	Cyberchase
11:00 am	Let's Go Luna!
11:30 am	Alma's Way
12:00 pm	Sesame Street
12:30 pm	Daniel Tiger's Neighborhood
1:00 pm	Mister Rogers
1:30 pm	Arthur
2:00 pm	Donkey Hodie
2:30 pm	Curious Crew
3:00 pm	Molly of Denali
3:30 pm	Wild Kratts
4:00 pm	SciGirls
4:30 pm	Work It Out Wombats!
5:00 pm	Sesame Street
5:30 pm	Daniel Tiger's Neighborhood
6:00 pm	Rosie's Rules
6:30 pm	Pinkalicious & Peterrific
7:00 pm	Dinosaur Train
7:30 pm	Cyberchase
8:00 pm	Arthur
8:30 pm	Mister Rogers

#### Sunday

5:00 am	Molly of Denali
5:30 am	Mister Rogers
6:00 am	Wild Kratts
6:30 am	Curious George
7:00 am	Work It Out Wombats!
7:30 am	Daniel Tiger's Neighborhood
8:00 am	Sesame Street
8:30 am	Rosie's Rules
9:00 am	Donkey Hodie
9:30 am	Pinkalicious & Peterrific
10:00 am	Dinosaur Train
10:30 am	Cyberchase
11:00 am	Let's Go Luna!
11:30 am	Alma's Way
12:00 pm	Sesame Street
12:30 pm	Daniel Tiger's Neighborhood
1:00 pm	Mister Rogers
1:30 pm	Arthur
2:00 pm	Donkey Hodie
2:30 pm	Curious Crew
3:00 pm	Molly of Denali
3:30 pm	Wild Kratts
4:00 pm	SciGirls
4:30 pm	Work It Out Wombats!
5:00 pm	Sesame Street
5:30 pm	Daniel Tiger's Neighborhood
6:00 pm	Rosie's Rules
6:30 pm	Pinkalicious & Peterrific
7:00 pm	Dinosaur Train
7:30 pm	Cyberchase
8:00 pm	Arthur
8:30 pm	Mister Rogers

### Channel 3-1

#### Saturday

5:00 am	Mister Rogers
5:30 am	Arthur
6:00 am	Molly of Denali
6:30 am	Alma's Way
7:00 am	Wild Kratts
7:30 am	Curious George
8:00 am	Work It Out Wombats!
8:30 am	Daniel Tiger's Neighborhood
9:00 am	Sesame Street
9:30 am	Rosie's Rules
10:00 am	Donkey Hodie
10:30 am	Pinkalicious & Peterrific

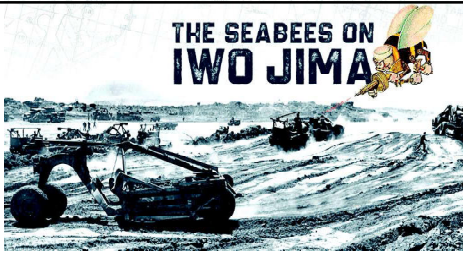
#### Sunday

5:00 am	Mister Rogers
5:30 am	Arthur
6:00 am	Molly of Denali
6:30 am	Alma's Way
7:00 am	Wild Kratts
7:30 am	Curious George
8:00 am	Work It Out Wombats!
8:30 am	Daniel Tiger's Neighborhood
9:00 am	Sesame Street
9:30 am	Rosie's Rules
10:00 am	Donkey Hodie
10:30 am	Pinkalicious & Peterrific



# Primetime on KENW-TV

**Tuesday 23rd**



**The Seabees on Iwo Jima** tells the story of the United States Naval Construction Battalions of World War II. The "Seabees," some of whom were in their 60s, were recruited from the construction trades to join special battalions that built the airfields and bases needed to stage a successful war effort. Best known for their work building runways out of jungles on the coral islands in the Pacific, these construction battalions helped the United States take the war to Japan's doorstep in 1945. Their most critical and violent fight was on Iwo Jima, where they went ashore in the first wave with the Marines.

**Thu 18th at 7pm (3-2)**  
**Sun 28th at 8:30pm (3-2)**  
**Wed 24th at 7pm (3-1)**

## Thursday 18th

- |       |     |  |
|-------|-----|--|
| 6:00  | 3-2 | <b>PBS NewsHour</b>  |
|       | 3-1 | <i>PBS NewsHour</i>  |
| 7:00  | 3-2 | <b>Seabees on Iwo Jima</b>                                     |
|       | 3-1 | <i>My Music with Rhiannon Giddens, Pt. 2</i>                   |
| 7:30  | 3-2 | <i>WoodSongs Kids, Pt. 1</i>                                   |
| 8:00  | 3-2 | <b>Song of the Mountains</b> "Carolina Blue"                   |
|       | 3-1 | <i>Red Green Show</i>  |
| 8:30  | 3-1 | <i>You Should Know</i>   |
| 9:00  | 3-2 | <b>Epic Trails</b> "Australia's Northern Territory"            |
|       | 3-1 | <i>Creative Living</i>   |
|       | 3-3 | <i>This American Land</i>                                      |
| 9:30  | 3-2 | <b>Red Green Show</b> "The Beef Project"                       |
|       | 3-1 | <i>Epic Trails</i>   |
|       | 3-3 | <i>Outside: Beyond the Lens</i>                                |
| 10:00 | 3-2 | <b>WoodSongs Kids</b> , Pt. 1                                  |
|       | 3-1 | <i>Amanpour and Company</i>                                    |
|       | 3-3 | <i>Wild Scandinavia, Pt. 2</i>                                 |
| 10:30 | 3-2 | <b>My Music with Rhiannon Giddens</b> "Allison Russell," Pt. 2 |
| 11:00 | 3-2 | <b>Amanpour and Company</b>                                    |
|       | 3-1 | <i>PBS NewsHour</i>  |
|       | 3-3 | <i>Nova</i>  |
| 12:00 | 3-2 | <b>PBS NewsHour</b>  |
|       | 3-1 | <i>Chavis Chronicles</i>                                       |
|       | 3-3 | <i>Healthy Minds</i>   |

## Friday 19th

- |       |     |  |
|-------|-----|--|
| 6:00  | 3-2 | <b>PBS NewsHour</b>                            |
|       | 3-1 | <i>PBS NewsHour</i>                            |
| 7:00  | 3-2 | <b>Market to Market</b>                        |
|       | 3-1 | <i>Washington Week</i>                         |
| 7:30  | 3-2 | <b>Consuelo Mack Wealthtrack</b>               |
|       | 3-1 | <i>Firing Line</i>                             |
| 8:00  | 3-2 | <b>Washington Week</b>                         |
|       | 3-1 | <i>Nova "Your Brain: Perception Deception"</i> |
| 8:30  | 3-2 | <b>Firing Line</b>                             |
| 9:00  | 3-2 | <b>Great Performances</b> "Richard III"        |
|       | 3-1 | <i>Anahita - A Mother's Journey</i>            |
|       | 3-3 | <i>This Old House</i>                          |
| 9:30  | 3-3 | <i>Ask This Old House</i>                      |
| 10:00 | 3-1 | <i>Amanpour and Company</i>                    |
|       | 3-3 | <i>American Woodshop</i>                       |
| 10:30 | 3-3 | <i>Woodsmith Shop</i>                          |

- |       |     |   |
|-------|-----|---|
| 11:00 | 3-1 | <i>PBS NewsHour</i>   |
|       | 3-3 | <i>Joy of Painting</i>  |
| 11:30 | 3-2 | <b>Iconic America: Our Symbols and Signs</b> "The Gadsden Flag" |
|       | 3-3 | <i>Garage with Steve Butler</i>                                 |
| 12:00 | 3-1 | <i>Seaside Hotel</i>  |
|       | 3-3 | <i>Start Up</i>   |

## Saturday 20th

- |       |     |  |
|-------|-----|--|
| 6:00  | 3-2 | <b>Report from Santa Fe</b>                              |
|       | 3-1 | <i>Antiques Roadshow</i>                                 |
| 6:30  | 3-2 | <b>America's Heartland</b>                               |
| 7:00  | 3-2 | <b>Lawrence Welk Show</b> "Salute to the Armed Forces"   |
|       | 3-1 | <i>Great Performances "Richard III"</i>                  |
| 8:00  | 3-2 | <b>People of the North</b> "Fishing Community of Soroya" |
| 8:30  | 3-2 | <b>Red Green Show</b> "Maxi Golf"                        |
| 9:00  | 3-2 | <b>Austin City Limits</b> "Texas Icons"                  |
|       | 3-3 | <i>Lawrence Welk Show</i>                                |
| 9:30  | 3-1 | <i>Bands of Enchantment</i>                              |
| 10:00 | 3-2 | <b>Nova</b> "Your Brain: Perception Deception"           |
|       | 3-1 | <i>Austin City Limits</i>                                |
|       | 3-3 | <i>Classic Gospel</i>                                    |
| 11:00 | 3-2 | <b>Wild Scandinavia</b> "Heartland," Pt. 2               |
|       | 3-1 | <i>Nova "Your Brain: Perception Deception"</i>           |
|       | 3-3 | <i>WoodSongs</i>   |
| 12:00 | 3-2 | <b>Austin City Limits</b> "Texas Icons"                  |
|       | 3-1 | <i>Wild Scandinavia, Pt. 2</i>                           |
|       | 3-3 | <i>Song of the Mountains</i>                             |

## Sunday 21st

- |       |     |   |
|-------|-----|---|
| 6:00  | 3-2 | <b>Medici: The Art of Power</b>   |
|       | 3-1 | <i>Lucy Worsley's Royal Myths &amp; Secrets</i>   |
| 6:30  | 3-2 | <b>Making Waves: The Art of Cinematic Sound</b>   |
| 7:00  | 3-1 | <i>Masterpiece "Tom Jones"</i>  |
| 8:00  | 3-2 | <b>Masterpiece "Tom Jones," Pt. 3</b>   |
|       | 3-1 | <i>Making Waves: The Art of Cinematic Sound</i>   |
| 9:00  | 3-2 | <b>Sherlock Holmes and the Hound of the Baskervilles: A Theater of the Mind Radio Drama</b> |
|       | 3-3 | <i>Daytripper</i>   |
| 9:30  | 3-1 | <i>Medici: The Art of Power</i>   |
|       | 3-3 | <i>America's Heartland</i>  |
| 10:00 | 3-1 | <i>Mona Lisa is Missing</i>   |
|       | 3-3 | <i>This Old House</i>   |
| 10:30 | 3-2 | <b>Georgia O'Keeffe: A Woman on Paper</b>   |
|       | 3-3 | <i>Ask This Old House</i>   |
| 11:00 | 3-2 | <b>Finding Your Roots</b> "Things We Don't Discuss"   |
|       | 3-1 | <i>Reel South</i>   |
|       | 3-3 | <i>Motorweek</i>  |
| 11:30 | 3-3 | <i>Texas Parks and Wildlife</i>   |
| 12:00 | 3-2 | <b>Nova</b> "Your Brain: Perception Deception"  |
|       | 3-1 | <i>Masterpiece "Tom Jones"</i>  |
|       | 3-3 | <i>Wild Scandinavia, Pt. 2</i>  |

## Monday 22nd

- |       |     |  |
|-------|-----|--|
| 6:00  | 3-2 | <b>PBS NewsHour</b>  |
|       | 3-1 | <i>PBS NewsHour</i>  |
| 7:00  | 3-2 | <b>Antiques Roadshow</b> "Spokane," Pt. 2                      |
|       | 3-1 | <i>American Masters "Waterman - Duke: Ambassador of Aloha"</i> |
| 8:00  | 3-2 | <b>Unconditional: Healing Hidden Wounds</b>                    |
| 8:30  | 3-1 | <i>POV Shorts</i>  |
| 9:00  | 3-1 | <i>Antiques Roadshow</i>                                       |
|       | 3-3 | <i>Lucy Worsley's Royal Myths &amp; Secrets</i>                |
| 9:30  | 3-2 | <b>Fanny: The Right to Rock</b>                                |
| 10:00 | 3-1 | <i>Amanpour and Company</i>                                    |
|       | 3-3 | <i>Masterpiece "Tom Jones"</i>                                 |
| 11:00 | 3-2 | <b>Antiques Roadshow</b> "Spokane"                             |
|       | 3-1 | <i>PBS NewsHour</i>  |
|       | 3-3 | <i>Making Waves: The Art of Cinematic Sound</i>                |
| 12:00 | 3-2 | <b>PBS NewsHour</b>  |
|       | 3-1 | <i>Fanny: The Right to Rock</i>                                |

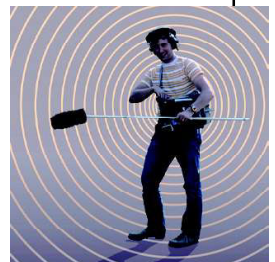
- |       |     |   |
|-------|-----|---|
| 6:00  | 3-2 | <b>PBS NewsHour</b>                                   |
|       | 3-1 | <i>PBS NewsHour</i>                                   |
| 7:00  | 3-2 | <b>Finding Your Roots</b> "Fighters"                  |
|       | 3-1 | <i>American Experience</i>                            |
| 8:00  | 3-2 | <b>American Experience</b> "Goin' Back to T-Town"     |
|       | 3-1 | <i>Leveling Lincoln</i>                               |
| 9:00  | 3-2 | <b>You Should Know</b>                                |
|       | 3-1 | <i>Finding Your Roots</i>                             |
|       | 3-3 | <i>Antiques Roadshow</i>                              |
| 9:30  | 3-2 | <b>Creative Living</b>                                |
| 10:00 | 3-2 | <b>Frontline</b> "Once Upon a Time in Iraq: Fallujah" |
|       | 3-1 | <i>Amanpour and Company</i>                           |
|       | 3-3 | <i>History Detectives</i>                             |
| 11:00 | 3-2 | <b>Amanpour and Company</b>                           |
|       | 3-1 | <i>PBS NewsHour</i>                                   |
|       | 3-3 | <i>Wild Scandinavia, Pt. 2</i>                        |
| 12:00 | 3-2 | <b>PBS NewsHour</b>                                   |
|       | 3-1 | <i>Frontline "Once Upon a Time in Iraq: Fallujah"</i> |
|       | 3-3 | <i>America's Heartland</i>                            |

## Wednesday 24th

- |       |     |  |
|-------|-----|--|
| 6:00  | 3-2 | <b>PBS NewsHour</b>                                    |
|       | 3-1 | <i>PBS NewsHour</i>                                    |
| 7:00  | 3-2 | <b>Wild Scandinavia</b> "Fire and Ice," Pt. 3          |
|       | 3-1 | <i>Seabees on Iwo Jima</i>                             |
| 8:00  | 3-2 | <b>Nova</b> "Your Brain: Who's in Control?"            |
|       | 3-1 | <i>Secrets of the Dead</i>                             |
| 9:00  | 3-2 | <b>Secrets of the Dead</b> "Hindenburg's Fatal Flaws"  |
|       | 3-1 | <i>Wild Scandinavia, Pt. 3</i>                         |
|       | 3-3 | <i>Finding Your Roots</i>                              |
| 10:00 | 3-2 | <b>Medical Frontiers</b> "Nursing Technology for Care" |
|       | 3-1 | <i>Amanpour and Company</i>                            |
|       | 3-3 | <i>To Dine For</i>                                     |
| 10:30 | 3-2 | <b>This Old House</b> "Ipswich: Factory Build"         |
|       | 3-3 | <i>People of the North</i>                             |
| 11:00 | 3-2 | <b>Amanpour and Company</b>                            |
|       | 3-1 | <i>PBS NewsHour</i>                                    |
|       | 3-3 | <i>Travels with Darley</i>                             |
| 11:30 | 3-3 | <i>Rick Steves' Europe</i>                             |
| 12:00 | 3-2 | <b>PBS NewsHour</b>                                    |
|       | 3-1 | <i>Nova "Your Brain: Who's in Control?"</i>            |
|       | 3-3 | <i>People of the North</i>                             |

## Making Waves: The Art of Cinematic Sound

This 90-minute film reveals the hidden power of sound in cinema and the unsung heroes who create it. It features entertaining and educational insights from legendary directors including George Lucas, Steven Spielberg, Robert Redford, David Lynch, Barbra Streisand, John



Lasseter, and Sofia Coppola, amongst many, whose award-winning work with their sound collaborators have created immersive and multi-sensory audience experiences. The film captures the history, impact, and creative process of this overlooked artform.

**Sun 21st at 6:30 pm (3-2)**  
**Thu 4th at 7pm (3-1)**  
**Sun 21st at 8pm (3-1)**

# 3-1 DAYTIME SCHEDULES

## Saturdays

11:00 a Kevin Belton's New Orleans  
 11:30 a Pati's Mexican Table  
 12:00 pm This Old House  
 12:30 pm This Old House  
 1:00 pm This Old House  
 1:30 pm Motorweek  
 2:00 pm Paint This with Jerry Yarnell  
 2:30 pm Chef's Life  
 3:00 pm America's Test Kitchen  
 3:00 pm Cook's Country  
 4:00 pm Nature (6th only)  
 Wild Scandinavia (begins 13th)  
 5:00 pm PBS News Weekend  
 5:30 pm Report from Santa Fe

## Sundays

11:00 am Washington Week  
 11:30 am Energy Switch  
 12:00 pm New Mexico in Focus  
 1:00 pm Consuelo Mack Wealthtrack  
 1:30 pm Market to Market  
 2:00 pm Growing a Greener World  
 2:30 pm J. Schwanke Life in Bloom  
 3:00 pm Celebrity Antique Roadshow  
 4:00 pm Nova  
 5:00 pm PBS News Weekend  
 5:30 pm Closer to Truth

## Mondays

5:00 am Classical Stretch  
 5:30 am Happy Yoga  
 6:00 am New Mexico in Focus  
 7:00 am Travelscope  
 7:30 am People of the North  
 8:00 am Rick Steves' Europe  
 8:30 am Jacques Pepin: Heart & Soul  
 9:00 am Pati's Mexican Table  
 9:30 am Kevin Belton's Cookin' Louisiana  
 10:00 am Growing a Greener World  
 10:30 am Jazzy Vegetarian  
 11:00 am Classical Stretch  
 11:30 am Sit and Be Fit  
 12:00 pm Masterpiece "Call the Midwife"  
 (ends 8th)  
 Lucy Worsley's Royal Myths &  
 Secrets (begins 15th)  
 National Memorial Day Concert  
 (29th)  
 1:00 pm Masterpiece "Tom Jones"  
 (ends 22nd)  
 1:30 pm Homecoming: Sgt. Hamilton's Long  
 Journey (29th)  
 2:00 pm Marie Antoinette (ends 8th)  
 Lucy Worsley's Royal Myths &  
 Secrets (15th)  
 Mona Lisa is Missing (22nd)  
 Elvis and the USS Arizona (29th)  
 3:00 pm Travels with Darley  
 3:30 pm People of the North  
 4:00 pm America's Heartland  
 4:30 pm Daytripper  
 5:00 pm Texas Parks and Wildlife  
 5:30 pm BBC World News America

## Tuesdays

5:00 am Classical Stretch  
 5:30 am Happy Yoga  
 6:00 am Antiques Roadshow  
 7:00 am Samantha Brown's Places to Love  
 7:30 am Reconnecting Roots  
 8:00 am Legacy List  
 9:00 am School of Greatness  
 9:30 am Healthy Minds (begins 2nd)  
 10:00 am Innovations in Medicine  
 10:30 am Fit n Delicious  
 11:00 am Classical Stretch  
 11:30 am Happy Yoga  
 12:00 pm Christina Cooks  
 12:30 pm My Greek Table  
 1:00 pm Life of Loi Mediterranean  
 1:30 pm Taste of History  
 2:00 pm History Detectives  
 3:00 pm Antiques Roadshow  
 4:00 pm Consuelo Mack Wealthtrack  
 4:30 pm Start Up  
 5:00 pm Firing Line  
 5:30 pm BBC World News America  
 6:00 pm PBS NewsHour



## Wednesdays

5:00 3-1 Classical Stretch  
 5:30 3-1 Happy Yoga  
 6:00 3-1 History with David Rubenstein  
 6:30 3-1 Start Up  
 7:00 3-1 Travels with Darley  
 7:30 3-1 Seeing Canada  
 8:00 3-1 History Detectives  
 9:00 3-1 Farmer and the Foodie  
 9:30 3-1 J. Schwanke's Life in Bloom  
 10:00 3-1 American Woodshop  
 10:30 3-1 Woodsmith Shop  
 11:00 3-1 Classical Stretch  
 11:30 3-1 Sit and Be Fit  
 12:00 3-1 Sara's Weeknight Meals  
 12:30 3-1 Cook's Country  
 1:00 3-1 Chef's Life  
 1:30 3-1 Tim Farmer's Country Kitchen  
 2:00 3-1 To Dine For with Kate Sullivan  
 2:30 3-1 Reconnecting Roots  
 3:00 3-1 Saving Species Together (3rd)  
 Sharing Butte Creek (10th)  
 Roadtrip Nation (begins 17th)  
 3:30 3-1 America's Forests (3rd, 10th only)  
 4:00 3-1 Lidia's Kitchen  
 4:30 3-1 America's Test Kitchen  
 5:00 3-1 News 3 New Mexico (ends 3rd)  
 By the River (begins 10th)  
 5:30 3-1 BBC World News America

## Thursdays

5:00 3-1 Classical Stretch  
 5:30 3-1 Happy Yoga  
 6:00 3-1 Story in the Public Square  
 6:30 3-1 Canada Files  
 7:00 3-1 Texas Parks & Wildlife  
 7:30 3-1 Fishing Behind the Lines  
 8:00 3-1 Antiques Roadshow  
 9:00 3-1 Fons & Porter's Love of Quilting  
 9:30 3-1 Quilting Arts  
 10:00 3-1 Knit and Crochet Now  
 10:30 3-1 Fit 2 Stitch  
 11:00 3-1 Classical Stretch  
 11:30 3-1 Happy Yoga  
 12:00 3-1 Milk Street  
 12:30 3-1 Lucky Chow  
 1:00 3-1 Ciao Italia  
 1:30 3-1 Jacques Pepin: Heart & Soul  
 2:00 3-1 Nature (4th only)  
 Wild Scandinavia (begins 11th)  
 3:00 3-1 This American Land  
 3:30 3-1 Outside: Beyond the Lens  
 4:00 3-1 Nova  
 5:00 3-1 Healthy Minds  
 5:30 3-1 BBC World News America

## Fridays

5:00 3-1 Classical Stretch  
 5:30 3-1 Yndi Yoga  
 6:00 3-1 America's Heartland  
 6:30 3-1 Garden Smart  
 7:00 3-1 Song of the Mountains  
 8:00 3-1 Songs at the Center  
 8:30 3-1 Cavern Sessions  
 9:00 3-1 Woodsongs  
 10:00 3-1 Joy of Painting  
 10:30 3-1 Painting and Travel  
 11:00 3-1 Classical Stretch  
 11:30 3-1 Sit and Be Fit  
 12:00 3-1 This Old House  
 12:30 3-1 Ask This Old House  
 1:00 3-1 Garage with Steve Butler  
 1:30 3-1 Sewing with Nancy  
 2:00 3-1 Creative Living  
 2:30 3-1 Weekends with Yankee  
 3:00 3-1 Seeing Canada  
 3:30 3-1 Samantha Brown's Places to Love  
 4:00 3-1 Good Road  
 4:30 3-1 Gzero World with Ian Bremmer  
 5:00 3-1 News 3 New Mexico (ends 5th)  
 History with David Rubenstein  
 5:30 3-1 BBC World News America



# National Memorial Day Concert 2023

A more than three decades long tradition unlike anything else on television, America's national night of remembrance brings us together as one family of Americans to honor the service and sacrifice of our men and women in uniform, military families and all those who have given their lives for our country.

**Sun 28th at 7pm & 9:30pm (3-2)**

**Sun 28th at 6pm (3-1)**

**Mon 29th at 12pm (3-1)**



America's national night of remembrance brings us together as one family of Americans to honor the service and sacrifice of our men and women in uniform, military families and all those who have given their lives for our country.

## Thursday 25th

- |       |     |   |
|-------|-----|---|
| 6:00  | 3-2 | <b>PBS NewsHour</b>                                   |
|       | 3-1 | <i>PBS NewsHour</i>                                   |
| 7:00  | 3-2 | <b>Frontline</b> "Once Upon a Time in Iraq: Fallujah" |
|       | 3-1 | <i>My Music with Rhiannon Giddens, Pt. 3</i>          |
| 7:30  | 3-1 | <i>Woodsongs Kids, Pt. 2</i>                          |
| 8:00  | 3-2 | <b>Song of the Mountains</b>                          |
|       |     | "Lightnin' Charlie"                                   |
|       | 3-1 | <i>Red Green Show</i>                                 |
| 8:30  | 3-1 | <i>You Should Know</i>                                |
| 9:00  | 3-2 | <b>Epic Trails</b> "Peru"                             |
|       | 3-1 | <i>Creative Living</i>                                |
|       | 3-3 | <i>This American Land</i>                             |
| 9:30  | 3-2 | <b>Red Green Show</b> "The Owl Project"               |
|       | 3-1 | <i>Epic Trails</i>                                    |
|       | 3-3 | <i>Outside: Beyond the Lens</i>                       |
| 10:00 | 3-2 | <b>Woodsongs Kids</b> "The Spencer Boys, Pt. 2"       |
|       | 3-1 | <i>Amanpour and Company</i>                           |
|       | 3-3 | <i>Wild Scandinavia</i>                               |
| 10:30 | 3-2 | <b>My Music with Rhiannon Giddens</b>                 |
|       |     | "Rissi Palmer," Pt. 3                                 |
| 11:00 | 3-2 | <b>Amanpour and Company</b>                           |
|       | 3-1 | <i>PBS NewsHour</i>                                   |
|       | 3-3 | <i>Nova</i>   |
| 12:00 | 3-2 | <b>PBS NewsHour</b>                                   |
|       | 3-1 | <i>Chavis Chronicles</i>                              |
|       | 3-3 | <i>Healthy Minds</i>                                  |

## Friday 26th

- |       |     |   |
|-------|-----|---|
| 6:00  | 3-2 | <b>PBS NewsHour</b>                                   |
|       | 3-1 | <i>PBS NewsHour</i>                                   |
| 7:00  | 3-2 | <b>Market to Market</b>                               |
|       | 3-1 | <i>Washington Week</i>                                |
| 7:30  | 3-2 | <b>Consuelo Mack Wealthtrack</b>                      |
|       | 3-1 | <i>Firing Line</i>                                    |
| 8:00  | 3-2 | <b>Washington Week</b>                                |
|       | 3-1 | <i>Nova</i> "Your Brain: Who's in Control?"           |
| 8:30  | 3-2 | <b>Firing Line</b>                                    |
| 9:00  | 3-2 | <b>Great Performances</b> "Anything Goes"             |
|       | 3-1 | <i>Frontline</i> "Once Upon a Time in Iraq: Fallujah" |
|       | 3-3 | <i>This Old House</i>                                 |
| 9:30  | 3-3 | <i>Ask This Old House</i>                             |
| 10:00 | 3-1 | <i>Amanpour and Company</i>                           |
|       | 3-3 | <i>American Woodshop</i>                              |
| 10:30 | 3-3 | <i>Woodsmith Shop</i>                                 |
| 11:00 | 3-1 | <i>PBS NewsHour</i>                                   |
|       | 3-3 | <i>Joy of Painting</i>                                |
| 11:30 | 3-2 | <b>POV Shorts</b> "Happiness Is"                      |
|       | 3-3 | <i>Garage with Steve Butler</i>                       |
| 12:00 | 3-2 | <b>PBS NewsHour</b>                                   |
|       | 3-1 | <i>Seaside Hotel</i>                                  |
|       | 3-3 | <i>Start Up</i>                                       |

## Saturday 27th

- |      |     |   |
|------|-----|---|
| 6:00 | 3-2 | <b>Report from Santa Fe</b>               |
|      | 3-1 | <i>Antiques Roadshow</i>                  |
| 6:30 | 3-2 | <b>America's Heartland</b>                |
| 7:00 | 3-2 | <b>Lawrence Welk Show</b>                 |
|      |     | "Hometown Band"                           |
|      | 3-1 | <i>Great Performances</i> "Anything Goes" |

- |       |     |   |
|-------|-----|---|
| 8:00  | 3-2 | <b>People of the North</b> "Western Fjord Valley" |
| 8:30  | 3-2 | <b>Red Green Show</b> "Bernice's Birthday"        |
| 9:00  | 3-2 | <b>Austin City Limits</b> "Brittany Howard"       |
|       | 3-3 | <i>Lawrence Welk Show</i>                         |
| 9:30  | 3-1 | <i>Bands of Enchantment</i>                       |
| 10:00 | 3-2 | <b>Nova</b> "Your Brain: Who's in Control?"       |
|       | 3-1 | <i>Austin City Limits</i>                         |
|       | 3-3 | <i>Classic Gospel</i>                             |
| 11:00 | 3-2 | <b>Wild Scandinavia</b> "Fire and Ice"            |
|       | 3-1 | <i>Nova</i> "Your Brain: Who's in Control?"       |
|       | 3-3 | <i>Woodsongs</i>                                  |
| 12:00 | 3-2 | <b>Austin City Limits</b> "Brittany Howard"       |
|       | 3-1 | <i>Wild Scandinavia, Pt. 3</i>                    |
|       | 3-3 | <i>Song of the Mountains</i>                      |

## Sunday 28th

- |       |     |   |
|-------|-----|---|
| 6:00  | 3-2 | <b>Tuskegee Airmen: Return to Ramitelli</b>     |
|       | 3-1 | <i>National Memorial Day Concert</i>            |
| 7:00  | 3-2 | <b>National Memorial Day Concert 2023</b>       |
| 7:30  | 3-1 | <i>Homecoming: Sgt. Hamilton's Long Journey</i> |
|       | 3-1 | <i>Elvis and the USS Arizona</i>                |
| 8:00  | 3-2 | <b>Seabees on Iwo Jima</b>                      |
| 9:00  | 3-1 | <i>Fanny: The Right to Rock</i>                 |
|       | 3-3 | <i>Daytripper</i>                               |
| 9:30  | 3-2 | <b>National Memorial Day Concert 2023</b>       |
|       | 3-3 | <i>America's Heartland</i>                      |
| 10:00 | 3-3 | <i>This Old House</i>                           |
| 10:30 | 3-1 | <i>Called to Walls</i>                          |
|       | 3-3 | <i>Ask This Old House</i>                       |
| 11:00 | 3-2 | <b>Finding Your Roots</b> "Fighters"            |
|       | 3-3 | <i>Motorweek</i>                                |
| 11:30 | 3-3 | <i>Texas Parks and Wildlife</i>                 |
| 12:00 | 3-2 | <b>Nova</b> "Your Brain: Who's in Control?"     |
|       | 3-1 | <i>National Memorial Day Concert 2023</i>       |
|       | 3-3 | <i>Wild Scandinavia, Pt. 3</i>                  |

## Monday 29th

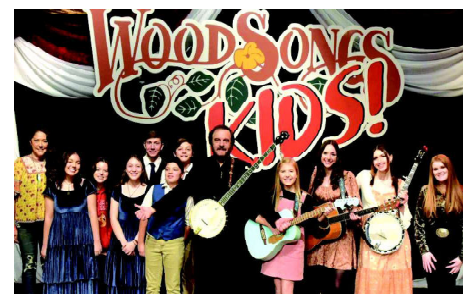
- |       |     |   |
|-------|-----|---|
| 6:00  | 3-2 | <b>PBS NewsHour</b>                             |
|       | 3-1 | <i>PBS NewsHour</i>                             |
| 7:00  | 3-2 | <b>Antiques Roadshow</b> "Little Rock"          |
|       | 3-1 | <i>Tuskegee Airmen: Return to Ramitelli</i>     |
| 8:00  | 3-2 | <b>Antiques Roadshow</b> "Little Rock"          |
|       | 3-1 | <i>Misty Experiment</i>                         |
| 9:00  | 3-2 | <b>Independent Lens</b> "The Donut King"        |
|       | 3-1 | <i>Antiques Roadshow</i>                        |
|       | 3-3 | <i>National Memorial Day Concert</i>            |
| 10:00 | 3-1 | <i>Amanpour and Company</i>                     |
| 10:30 | 3-2 | <b>Texas Parks and Wildlife</b>                 |
|       | 3-3 | <i>Homecoming: Sgt. Hamilton's Long Journey</i> |
| 11:00 | 3-2 | <b>Antiques Roadshow</b> "Little Rock"          |
|       | 3-1 | <i>PBS NewsHour</i>                             |
|       | 3-3 | <i>Elvis and USS Arizona</i>                    |
| 12:00 | 3-2 | <b>PBS NewsHour</b>                             |
|       | 3-1 | <i>Independent Lens</i> "The Donut King"        |
|       | 3-3 | <i>Chef's Life</i>                              |

## Tuesday 30th

- |       |     |  |
|-------|-----|--|
| 6:00  | 3-2 | <b>PBS NewsHour</b>                                      |
|       | 3-1 | <i>PBS NewsHour</i>                                      |
| 7:00  | 3-2 | <b>Finding Your Roots</b> "Songs of the Past"            |
|       | 3-1 | <i>Lidia Celebrates America</i>                          |
| 8:00  | 3-2 | <b>Lidia Celebrates America</b> "Flavors That Define Us" |
|       | 3-1 | <i>Taste Awards</i>                                      |
| 9:00  | 3-2 | <b>You Should Know</b>                                   |
|       | 3-1 | <i>Finding Your Roots</i>                                |
|       | 3-3 | <i>Antiques Roadshow</i>                                 |
| 9:30  | 3-2 | <b>Creative Living</b>                                   |
| 10:00 | 3-2 | <b>Frontline</b> "America's Dangerous Trucks"            |
|       | 3-1 | <i>Amanpour and Company</i>                              |
|       | 3-3 | <i>History Detectives</i>                                |
| 11:00 | 3-2 | <b>Amanpour and Company</b>                              |
|       | 3-1 | <i>PBS NewsHour</i>                                      |
|       | 3-3 | <i>Wild Scandinavia, Pt. 3</i>                           |
| 12:00 | 3-2 | <b>PBS NewsHour</b>                                      |
|       | 3-1 | <i>Frontline</i> "America's Dangerous Trucks"            |
|       | 3-3 | <i>America's Heartland</i>                               |

## Wednesday 31st

- |       |     |  |
|-------|-----|--|
| 6:00  | 3-2 | <b>PBS NewsHour</b>  |
|       | 3-1 | <i>PBS NewsHour</i>  |
| 7:00  | 3-2 | <b>Nature</b> "Pandas: Born to Be Wild"                    |
|       | 3-1 | <i>Legends of the Sky: The Liberty Plane</i>               |
| 8:00  | 3-2 | <b>Nova</b> "Why Ships Crash"                              |
|       | 3-1 | <i>Secrets of the Dead</i>                                 |
| 9:00  | 3-2 | <b>Secrets of the Dead</b>                                 |
|       |     | "Abandoning the Titanic"                                   |
|       | 3-1 | <i>Nature</i> "Pandas: Born to Be Wild"                    |
|       | 3-3 | <i>Finding Your Roots</i>                                  |
| 10:00 | 3-2 | <b>Medical Frontiers</b> "How the Muscles Prevent Disease" |
|       | 3-1 | <i>Amanpour and Company</i>                                |
|       | 3-3 | <i>To Dine For</i>   |
| 10:30 | 3-2 | <b>This Old House</b> "Ipswich: New Life"                  |
|       | 3-3 | <i>People of the North</i>                                 |
| 11:00 | 3-2 | <b>Amanpour and Company</b>                                |
|       | 3-1 | <i>PBS NewsHour</i>  |
|       | 3-3 | <i>Travels with Darley</i>                                 |
| 11:30 | 3-3 | <i>Rick Steves' Europe</i>                                 |
| 12:00 | 3-2 | <b>PBS NewsHour</b>  |
|       | 3-1 | <i>Nova</i> "Why Ships Crash"                              |
|       | 3-3 | <i>People of the North</i>                                 |



## Woodsongs Kids

This new series before a live audience celebrates the music of America's "front porch" as performed by amazing kids from across the country. Think "Mr. Rogers meets the Grand Ole Opry," complete with lesson plans for teachers and home schools to use.

**Thu 10pm begins 18th (3-2)**  
**Thu 7:30pm begins 18th (3-1)**

## My Music with Rhiannon Giddens

The singer, instrumentalist and two-time Grammy winner hosts this new 7-part series that features the songs, stories and experiences of artists who have influenced her own love of traditional music. Her music draws from many traditions including blues, jazz, folk, hip hop, African, Celtic, classical, and jug band. She is the first woman and person of color to win a major prize for banjo.



**Thu 10:30pm begins 11th (3-2)**  
**Thu 7pm begins 11th (3-1)**

# KENW-FM Radio Week at-a-Glance

**KENW-FM, Portales, NM, 89.5 MHz — KMTH-FM, Maljamar, NM, 98.7 MHz — KENM-FM, Tucumcari, NM, 88.9 MHz — KENU-FM, Des Moines, NM, 88.5 MHz — KENG-FM, Ruidoso, NM, 88.5 MHz — KENE-FM, Raton, NM, 88.1 MHz**

**Translators:** Apache Springs, 90.9 MHz; Clayton, 93.5 MHz; Des Moines, 106.1 MHz; Ft. Sumner, 91.7 MHz; Las Vegas, 88.1 MHz; Roswell, 91.1 MHz; Wagon Mound, 92.1 MHz.

	Sunday	Monday	Tuesday	Wednesday	Thursday	Friday	Saturday	Monday through Friday
5:00	Travel with Rick Steves	Morning Edition	Morning Edition	Morning Edition		Morning Edition	5:00 a.m. People's Pharmacy	<b>Weather:</b> 5:18, 6:18, and 7:18 a.m. <b>Regional News:</b> 5:33, 6:33, and 7:33 a.m. 5:06 & 7:06 Innovation Now 5:42 & 7:42 Loh Down on Science 5:49 & 7:49 Melinda's Garden Moment 6:06 Climate Connections 6:42 Science Update 6:49 90 Second Naturalist 8:01 Marketplace Report 8:15 Animal Airwaves (MWF) Kindness Moment (Tu, Th) 8:20 Nature Notes (Tu) Travelers in the Night (W) A Southwest Spotlight (F) 8:30 Health in a Heartbeat 8:45 Insight 9:00 Weather/News 9:15 Marketplace Tech Report 9:30 Disability Awareness 9:45 EarthDate 10:00 Weather/News/Regional News 10:15 Engines of Our Ingenuity 10:30 Composers' Datebook 10:45 Author's Corner 11:00 Weather/News 11:15 Melinda's Garden Moment 11:30 The Plant Detective 11:45 Climate Connections 12:00 Weather/News/Regional News 12:30 Today in Rock & Roll History 12:35 Great Arts at Eastern (Th) 12:45 People's Pharmacy News (M) Poetry Now (T) A Touch on Nature (W) Medical Discoveries News (Th) Science and the Sea (F) 1:00 Weather/News 1:06 Asian View 1:15 Sound Beat 1:30 Loh Down on Science 1:20 A Southwest Spotlight (W) 1:45 StarDate 2:00 Weather/News/Regional News 2:15 Bird Note 2:30 The American Storyteller 2:45 90 Second Naturalist/ Innovation Now 4:20 Earthdate 4:50 & 5:50 p.m. Weather 5:20 The Plant Detective 6:57 StarDate/Weather 9:00 Weather/News 12:00 & 3:00 a.m. Weather/News
6:00	Weekend Edition						6:00 a.m. Weekend Edition	
7:00							8:00 a.m. Planet Money & How I Built This	
8:00	With Heart and Voice	Music News & Features	Music News & Features	Music News & Features	Music News & Features	Music News & Features	9:00 a.m. Wait, Wait... Don't Tell Me	
9:00	Footlight Parade						10:00 a.m. Bioneers	
10:00	Radiolab						10:30 a.m. New Letters	
11:00	Fresh Air Weekend with Terry Gross						11:00 a.m. Opera	
12:00	People's Pharmacy (R)						2:30 p.m. Nothing Funny About Money	
1:00	This American Life						(when length of opera permits)	
2:00	Freakonomics						3:00 p.m. Classical Guitar Alive	
3:00	Mountain Stage	3:00 p.m. Report from Santa Fe	Best of Knowledge	51 Percent	With Good Reason	2:30 pm A Way With Words	4:00 p.m. WoodSongs	
3:30		Marketplace	Marketplace	Marketplace	Marketplace	Marketplace	5:00 p.m. E-Town	
4:00		All Things Considered	All Things Considered	All Things Considered	All Things Considered	All Things Considered		
4:30	Thistle & Shamrock							
5:00								
6:00	All Things Considered	PBS NewsHour	PBS NewsHour	PBS NewsHour	PBS NewsHour	PBS NewsHour	All Things Considered	
7:00	Pittsburgh Symphony Orchestra	Chicago Symphony Orchestra	New York Philharmonic	European Union Orchestra	Collectors' Corner	Concierto with Frank Dominguez Fiesta!	Swingin' Down the Lane	
8:00							Jazz Night in America	
9:00	The Romantic Hours	Performance Today	Performance Today	Performance Today	Performance Today	Performance Today	Jazz at 100	
10:00	Performance Today						DreamFarm Radio	
11:00	Classical Music Out of the Night until 5:00 a.m.	Classical Music Out of the Night until 5:00 a.m.	Classical Music Out of the Night until 5:00 a.m.	Classical Music Out of the Night until 5:00 a.m.	Classical Music Out of the Night until 5:00 a.m.	Classical Music Out of the Night until 5:00 a.m. when People's Pharmacy begins.	Classical Music Out of the Night until 5:00 a.m. when Travel with Rick Steves	

The Q2-3 Program Guide (Cue to 3) is published each month by the Broadcast Center, a non-profit public service division of Eastern New Mexico University.

The guide is available to friends contributing \$35 per year or more to the support of public broadcasting. Senior Citizen and Student memberships are available for \$25. All contributions are tax deductible. Donations should be made payable to Friends of KENW-TV or to Friends of KENW-FM. Telephone: (575) 562-2112. Toll-free 1-888-FOR-KENW (367-5369). Fax: (575) 562-2590

**Mailing Address:**

**KENW-TV/FM**

**52 Broadcast Center, ENMU**

**1500 South Avenue K**

**Portales, NM 88130**

**Website: www.kenw.org**

**E-Mail: kenwtv@enmu.edu kenwfm@enmu.edu**

Eastern New Mexico University is an affirmative action and equal opportunity employer. The University does not discriminate on the basis of race, color, national origin, religion, sex (including pregnancy, gender identity, and sexual orientation), age, disability, genetic information, veteran status, or any other protected status in its programs, activities, or employment. People seeking additional information about the University's non-discrimination policy should contact the Affirmative Action Officer at Station 9.



**KENW-TV/FM**  
**Eastern New Mexico University**



## Our KENW Supporters

Please join us in thanking and supporting these businesses and organizations that help make our programming possible. Call Rena Garrett at 575 562-2112 to add your support.

### In Support of KENW-TV

Anderson Bethany Funeral Home  
and Crematory, Roswell  
Chaves County Farm and Livestock Bureau,  
Dexter and Roswell  
CJ's Pill Box, Portales  
Clovis Community College Cultural Art Series  
Eastern New Mexico News, Clovis and Portales  
Eastern New Mexico University, Portales  
el Zocalo Cooperative Art Gallery  
Farmers' Electric Cooperative, Inc. of NM,  
Clovis  
Featherstone Development Corp., Roswell  
Havenor Operating Company, Roswell  
James Polk Stone Community Bank  
Clovis, Eunice, Hagerman, Hobbs, Portales,  
Roswell, Carlsbad  
Living Desert Zoo & Gardens State Park,  
Carlsbad  
New Mexico Department of Agriculture  
New Mexico Gas Company  
Paul and Elise Schmidt  
Plateau, Clovis  
Roosevelt County Electric Cooperative  
Security State Bank, Farwell, TX  
Sew Irresistible Quilt Shop, Farwell, TX  
Valley Mower Clinic, Inc., Clovis  
Yucca, Portales

### In Support of KENW-FM

Atwood, Malone, Turner & Sabin,  
Attorneys at Law, Roswell  
Blue Lotus Day Spa & Yoga Studio, Ruidoso  
Calibers, Clovis  
City of Carlsbad  
City of Las Vegas, NM  
City of Portales  
el Zocalo Cooperative Art Gallery,  
Las Vegas, NM  
First Presbyterian Church, Roswell  
High Country Agency, Inc. Insurance,  
Ruidoso  
jf maddox foundation  
New Mexico Arts  
New Mexico Gas Company  
paper trail..., Las Vegas, NM  
Raton, New Mexico  
Roswell Jazz Festival  
State Farm, David Bonner, Portales  
Taco Box, Clovis and Portales  
Taylor Water Well Service, Carlsbad  
United Supermarkets, Market Street,  
Albertsons' Market  
Western Heritage Museum Lea County,  
Cowboy Hall of Fame, Hobbs

**Thank You!**

**American  
MASTERS**

### Nam June Paik: Moon is the Oldest TV

**American Masters** premieres "Nam June Paik: Moon is the Oldest TV." This documentary tells the story of a pillar of the American avant-garde in the 20th century, widely regarded as "The George Washing-



ton of Video Art," who coined the phrase "Electronic Superhighway," and is arguably the most famous Korean artist in modern history. It charts Paik's artistic

evolution, from his formative education in Munich, through his rise in the New York art scene, and his Nostradamus-like visions of a future in which "everybody will have his own TV channel."

**Tue 16th at 8pm (3-2)  
Tues 16th at 7pm (3-1)**



### When We Were Shuttle

**When We Were Shuttle** is a two-hour documentary that explores what NASA's space shuttle program meant to six exceptional men and women who worked behind the scenes to make it fly. Through their recollections and personal archives, the film examines some of the program's highs and its darkest hours. It also offers a unique, grassroots look at how the shuttle impacted life in the Sunshine state, from the thriving aerospace and tourism industry it sustained to the decision to retire the shuttle when the program ended in 2011.

**Mon 15th at 7pm (3-1)**

## Our KENW Staff

### BROADCAST CENTER STAFF

*Director of Broadcasting*  
**Duane W. Ryan**  
*Business Associate*  
**Laura Thompson**  
*Engineering Director/Interim Director*  
**Porfirio Delgado**  
*Engineers*  
**Michael Chandler**  
**Jason Murphy**  
**Lawrence Thompson**

### KENW-TV STAFF

*Programming Director*  
**Sean Moore**  
*Operations Director*  
**Justin Robertson**  
*Programming/  
Operations Assistant*  
**Kim Choate**  
*Master Control Operator, TV*  
**David Asplund**  
**Doris Blandford**  
*Administrative Assistants*  
**Vickie Brisco**  
**Evelyn Ledbetter**  
*Development/Promotion  
Director*  
**Rena Garrett**  
*Producer/Director, TV*  
**Allan Crawford**  
*Programming Associate*  
**Linda Stefanovic**

### KENW-FM STAFF

*News Director, FM*  
**Tim Gutierrez**  
*Operations Director, FM*  
**Shannon Hearn**  
*Audio Engineer*  
**Mickey Morgan**  
*Administrative Assistant*  
**Suzanne West**

### EASTERN NEW MEXICO UNIVERSITY

*President/System Chancellor*  
**Dr. James Johnston**  
*Vice President for Academic Affairs*  
**Dr. Jamie Laurenz**  
*Vice President for Academic Support*  
**Mr. Justin Liles (Interim)**  
*Chief Financial Officer*  
**Mr. Tony Major**  
*Vice President for Student Affairs*  
**Dr. Jeffrey Long**

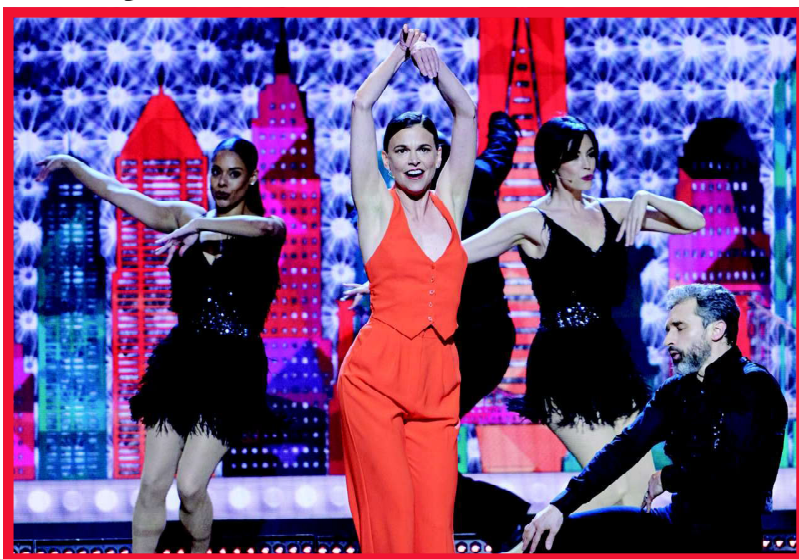
# Great Performances



## At the Met Fedora

Back at the Met for the first time in 25 years, Umberto Giordano's drama stars soprano Sonya Yoncheva in the title role, a 19th-century Russian princess who falls in love with her fiancé's murderer, Count Loris, sung by star tenor Piotr Beczala. The production features a set that unfolds revealing the opera's three settings: a St. Petersburg palace, a fashionable Parisian salon and a villa in the Swiss Alps.

Sun 14th at 2pm (3-2)  
Sunday 14th at 9pm (3-1)



## Celebrating 50 Years of Broadway's Best

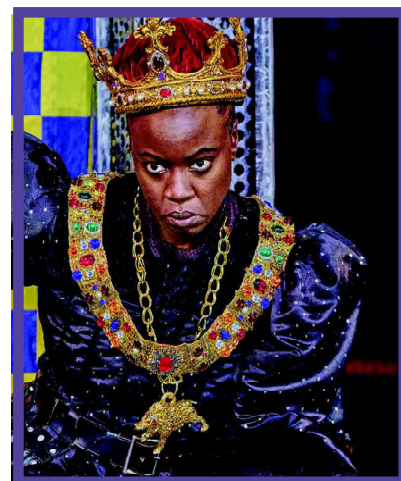
Great Performances presents a show-stopping performance of milestone Broadway shows and songs from 1973 to 2023 hosted by two-time Tony Award winner Sutton Foster (shown). The gala event features a cast of veteran Broadway stars—André De Shields, Chita Rivera, Vanessa Williams and more—as well as a new generation of up and coming talent.

Fri 12th at 9pm (3-2)  
Sun 14th at 6:30pm (3-2)

Sat 13th at 7pm (3-1)

## Richard III

Great Performances raises the curtain on The Public Theater's Free Shakespeare in the Park production of "Richard III." Danai Gurira ("Black Panther: Wakanda Forever") stars in the title role of this Shakespearean tragedy. Richard is determined to be king, using his brilliant words and dark charm to conceal his dismantling of government and justice as he manipulates, kidnaps, or kills all who stand in his way.



Fri 19th at 9pm (3-2)  
Sat 20th at 7pm (3-1)