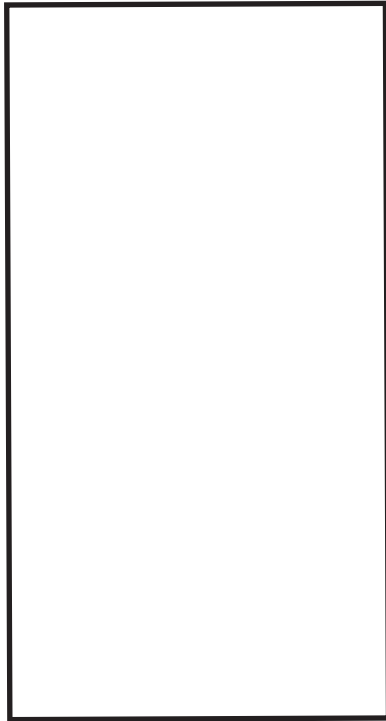


Non-Profit Org.  
US Postage  
**PAID**  
Slate Group

**kenw**  
PBS **MP**  
Eastern New Mexico  
University  
1500 S. Avenue K  
Portales, NM 88130



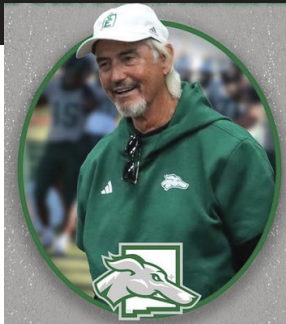
## YOU SHOULD KNOW

This month, You Should Know (YSK), offers an in-depth and personal conversation with Art Briles, head football coach at Eastern New Mexico University Football. Known nationally for his decades-long career in coaching, Briles opens up about the defining moments that shaped his life, from his early years and influences and what ultimately led him to Eastern New Mexico University.

In this candid interview, Coach Briles shares how his personal journey has formed his approach to leadership, mentorship, and building a football program grounded in character and accountability. Viewers gain insight not only into the man behind the whistle and his coaching philosophy but also his vision for the future of ENMU football.

**Sun 1st 5pm (3-2)**

**Thu 5th 5pm (3-1)**



**TV**

KENW-TV/FM  
Scan QR code to donate!  
Thank You for Your Support!



**FM**

Program Guide KENW-TV/FM  
Eastern New Mexico University  
March 2026

# Q2·3



# Primetime

## Sunday 1st

- 6:00 3-2 **Florence: The Art of Magnificence**  
3-1 *Rick Steves Art of the Modern Age*
- 6:30 3-2 **Gregorian:**  
**Pure Chants Live in Prague**
- 7:00 3-1 *Masterpiece "All Creatures Great and Small: Seasons of the Dales"*
- 8:00 3-2 **Great Performances "Andrea Bocelli- The 30<sup>th</sup> Celebration"**
- 8:30 3-1 *Il Volo in the Valley of the Temples*
- 9:00 3-3 *Antiques Roadshow*
- 10:00 3-2 **Last Days of Jesus Pt. 1**  
3-1 *Rick Steves' Europe "Egypt's Cairo"*  
3-3 *This Old House*
- 10:30 3-1 *Bands of Enchantment "Violet Rising + Crime Lab"*  
3-3 *Ask This Old House*
- 11:00 3-2 **Finding Your Roots "Spike Lee/Kristin Chenoweth"**  
3-1 *Puzzle Lady Pt. 2*  
3-3 *Motorweek*
- 11:30 3-3 *Texas Parks and Wildlife*
- 12:00 3-2 **Nova "Stone Age Temple Mystery"**  
3-1 *Hotel Portofino "First Impressions" Pt. 1*  
3-3 *America's Heartland*

## Monday 2nd

- 6:00 3-2 **PBS News Hour**  
3-1 *PBS News Hour*
- 7:00 3-2 **Great Irish Songbook**  
3-1 *Julia Child: Best Bites*
- 8:30 3-2 **Daniel O'Donnell from Castlebar, Ireland**  
3-1 *Quilting Women of Gee's Bend*  
3-3 *Baking with Julia*
- 9:00 3-3 *This Old House*
- 9:30 3-3 *This Old House*
- 10:00 3-2 **School of Greatness "Toxic Relationships & Healthy Connections"**  
3-1 *Amanpour and Company*  
3-3 *Hotel Portofino Pt. 1*
- 10:30 3-2 **Texas Parks and Wildlife**
- 11:00 3-2 **Antiques Roadshow "LSU Rural Life Museum"**  
3-1 *PBS News Hour*  
3-3 *Hotel Portofino Pt. 2*
- 12:00 3-2 **PBS News Hour**  
3-1 *Craft in America "Quilts" Pt. 1*  
3-3 *Hotel Portofino Pt. 3*
- 6:00 3-2 **PBS News Hour**  
3-1 *PBS News Hour*

## Tuesday 3rd

- 7:00 3-2 **Fleetwood Mac: The Dance**  
3-1 *Memory Makeover with Daniel Amen, MD*
- 8:30 3-2 **Brothers – Celebrating the Allman Brothers Band**  
3-1 *American Pop Flashback! Great Hits of the '60s & '70s*
- 9:00 3-3 *Baking with Julia*
- 9:30 3-3 *This Old House*
- 10:00 3-2 **Eudora**  
3-1 *Amanpour and Company*  
3-3 *Antiques Roadshow*
- 11:00 3-2 **Amanpour and Company**  
3-1 *PBS News Hour*  
3-3 *Antiques Roadshow*
- 12:00 3-2 **PBS News Hour**  
3-1 *Great Performances "Samara Joy at Royal Albert Hall"*  
3-3 *La Frontera with Pati Jinich*

## Wednesday 4th

- 6:00 3-2 **PBS News Hour**  
3-1 *PBS News Hour*
- 7:00 3-2 **Kris Kristofferson: Life & Songs**  
3-1 *Barbra Streisand: Timeless – Live in Concert*

# FESTIVAL 2026

February 28-March 15



## Barbra Streisand: Timeless – Live in Concert

Celebrate Barbra Streisand in her spectacular "Timeless" concerts, staged like a Broadway musical reflecting on her legendary career. Streisand performs iconic hits and duets with singing sensation Lauren Frost. The show also includes a stunning video montage of her unforgettable duets with Judy Garland, Frank Sinatra, and others.

- Sun 1st 1pm (3-2)**  
**Sun 8th 7pm (3-2)**  
**Wed 4th 7pm (3-1)**

## Gregorian: Pure Chants Live in Prague

Blending breathtaking vocals with soul-stirring arrangements, this stunning Gregorian choir concert delivers an emotional and immersive musical journey. The group performs traditional chants alongside "pure" acoustic versions of fan favorites, including *Ode to Joy*, Coldplay's *Fix You*, The Beatles' *In My Life*, Simon & Garfunkel's *The Sound of Silence*, and Enigma's *Sadness Pt. 1*.

- Sun 1st 6:30 pm (3-2)**  
**Sun 15th 8:30pm (3-1)**

## The Great Irish Songbook

Celebrate the rich tradition of Irish song and its lasting influence on American music in this 90-minute special. Performed in iconic venues such as the London Palladium and Dublin's National Concert Hall, the show blends beloved Irish classics with songs inspired by Irish heritage. Sligo-based band Dervish joins a stellar lineup of artists, bringing the joy, spirit, and enduring power of this timeless musical legacy to life.

- Mon 2nd 7pm (3-2)**  
**Sat 14th 8:30pm (3-2)**  
**Sun 15th 7pm (3-1)**

## Julia Child's Best Bites

She was quirky. Irresistibly whimsical and wholeheartedly devoted to the art of French cuisine. Julia Child changed palates and food preparation habits in 200 informative and entertaining episodes of *The French Chef*. She singlehandedly paved the way for today's culinary experts—those who saute and puree on hundreds of cooking shows around the world. In *Julia Child's Best Bites*, celebrities and Julia devotees share personal insights as they screen and delight in Julia's most-beloved episodes. Join Martha Stewart, Jacques Pepin, Rick Bayless, Jose Andres, and other special guests to celebrate the first lady of cooking.

- Mon 2nd 7pm (3-1)**  
**Sun 15th 3:30pm (3-1)**

## American Pop Flashback! Great Hits of the '60s & '70s

This feel-good musical celebration brings the biggest hits of the '60s and '70s to life with a dazzling lineup of music legends. Enjoy contemporary concert performances from icons such as Glen Campbell, The Osmond Brothers, Lesley Gore, Bill Medley, Crystal Gayle, Paul Revere and the Raiders, Tony Orlando, and more.

- Fri 6th 9pm (3-2)**  
**Tue 10th 7pm (3-2)**  
**Tue 3rd 8:30pm (3-1)**

## Pavarotti 90:

## The Man Who Moved the World

This two-hour tribute concert, filmed in September 2025 at Italy's Arena di Verona, celebrates what would have been the acclaimed tenor's 90th birthday. Featuring world-renowned opera and pop artists including Andrea Bocelli, José Carreras, trio Il Volo, and cellist HAUSER, the performance showcases the two diverse musical sides of Pavarotti.

- Sun 8th 1pm (3-2)**  
**Sun 15th 8pm (3-2)**  
**Fri 6th 7pm (3-1)**



- 8:30 3-2 **Country's Legendary Duets**
- 9:00 3-1 *Air Supply: 50th Anniversary Concert*
- 3-3 *Baking with Julia*
- 9:30 3-3 *This Old House*
- 10:00 3-2 **Medical Frontiers**
- 3-3 *American Vision: The Santa Fe Opera*
- 10:30 3-2 **This Old House**
- 3-1 *Amanpour and Company*
- 11:00 3-2 **Amanpour and Company**
- 3-3 *King of Them All: The Story of King Records*
- 11:30 3-1 *PBS News Hour*
- 12:00 3-2 **PBS News Hour**
- 3-3 *Native America Pt. 1*

**Thursday 5th**

- 6:00 3-2 **PBS News Hour**
- 3-1 *PBS News Hour*
- 7:00 3-2 **Air Supply: 50th Anniversary Concert**
- 3-1 *Country Classics*
- 8:30 3-2 **Chicago & Friends: Live At 55**
- 3-1 *Country's Legendary Duets*
- 9:00 3-3 *Baking with Julia*
- 9:30 3-3 *This Old House*
- 10:00 3-2 **Woodsongs**
- 3-1 *Sportslook*
- 3-3 *Nature*

- 10:30 3-1 *Amanpour and Company*
- 11:00 3-2 **Amanpour and Company**
- 3-3 *Ireland's Wild Coast Pt. 1*
- 11:30 3-1 *PBS News Hour*
- 12:00 3-2 **PBS News Hour**
- 3-3 *Ireland's Wild Coast Pt. 2*

**Friday 6th**

- 6:00 3-2 **PBS News Hour**
- 3-1 *PBS News Hour*
- 7:00 3-2 **Market to Market**
- 3-1 *Pavarotti 90: The Man Who Moved the World*
- 7:30 3-2 **Consuelo Mack Wealthtrack**
- 8:00 3-2 **Washington Week**
- 8:30 3-2 **Firing Line**
- 9:00 3-2 **American Pop Flashback! Great Hits of the '60s & '70s**
- 3-1 *Luther Vandross: Live*
- 3-3 *Baking with Julia*
- 9:30 3-3 *This Old House*
- 10:00 3-3 *Volunteer Woodworker*
- 10:30 3-2 **In Search of Edgar Allan Poe Pt. 1**
- 3-1 *Amanpour and Company*
- 3-3 *Woodsmith Shop*
- 11:00 3-3 *Joy of Painting*
- 11:30 3-1 *PBS News Hour*
- 3-3 *Painting and Travel*

- 12:00 3-2 **PBS News Hour**
- 3-3 *Joy of Painting with Nicholas Hankins*

**Saturday 7th**

- 6:00 3-2 **Report from Santa Fe**
- 3-1 *Antiques Roadshow "LSU Rural Life Museum"*
- 6:30 3-2 **America's Heartland**
- 7:00 3-2 **Daniel O'Donnell from Castlebar, Ireland**
- 3-1 *Barry Manilow: Live by Request*
- 3-2 **Country Classics**
- 3-1 *Pointer Sisters: So Excited!*
- 9:00 3-3 *From the Cowboy's Boot Heel: The Musical Journey of Rob McNurlin*
- 10:00 3-2 **Nova "Easter Island Origins"**
- 3-1 *Austin City Limits "Jorge Drexler"*
- 3-3 *Classic Gospel*
- 11:00 3-2 **Nature "Parenthood: The Greatest Adventure"**
- 3-1 *Why Dinosaurs?*
- 3-3 *Woodsongs*
- 12:00 3-2 **Austin City Limits "Jorge Drexler"**
- 3-1 *Nature "Parenthood: The Greatest Adventure"*
- 3-3 *Song of the Mountains*

## Simon & Garfunkel: The Concert in Central Park

Join legendary duo Simon & Garfunkel and the more than 500,000 fans who turned out for their unforgettable 1981 benefit concert in Central Park. Relive a once-in-a-lifetime performance featuring their greatest hits, from "Mrs. Robinson" to "The Sound of Silence."

**Mon 9th 7pm (3-2)**

**Wed 11th 8:30pm (3-1)**

## Memory Makeover with Daniel Amen MD

Psychiatrist and Amen Clinics founder Dr. Daniel Amen shows viewers how to protect and improve their memory, revealing the most common—and surprising—causes of memory loss. Learn seven foods and supplements research shows can boost memory and sharpen your mind every day.

**Mon 9th 8:30pm (3-2)**

**Tue 3rd 7pm (3-1)**

## Tony Bennett: Viva Duets

This concert brings Tony Bennett together with a celebrated lineup of performers, including Marc Anthony, Gloria Estefan, Franco De Vita, and Vicente Fernandez. Together they perform timeless classics such as "For Once in My Life," "Return to Me," "Who Can I Turn To?" and more.

**Sun 8th 9pm (3-2)**

**Fri 13th 7pm (3-1)**

## Heal Your Gut, Sharpen Your Mind

Discover how brain fog, memory loss, anxiety, weight gain, and even neurodegeneration can stem from a compromised gut. Dr. Steven Gundry shares practical steps to repair your microbiome, reduce inflammation, and reclaim sharper thinking, calmer moods, easier weight control, and lasting vitality.

**Wed 11th 8:30pm (3-2)**

**Sun 8th 3pm (3-2)**

**Tues 10th 7pm (3-1)**



## Deconstructing the Beatles Pt. 1 More Deconstructing the Beatles Pt. 2

Join acclaimed Beatle-ologist Scott Freiman for an educational journey through The Beatles' milestone albums and the stories behind them. Part 1 explores The Beatles' *Come to America*, *Rubber Soul*, and *Strawberry Fields*, while Part 2 dives into *A Hard Day's Night*, *Penny Lane*, and the evolution of George Harrison's songs.

**Thu 12th 7pm & 8:30pm (3-2)**

**Sat 14th 7pm & 8:30pm (3-1)**



## The Forsytes: An Inside Look

Take a behind-the-scenes look at the upcoming **Masterpiece** series "The Forsytes," based on John Galsworthy's acclaimed novels. This preview explores how the story of a wealthy Victorian family comes to life on screen, from the actors' performances to the sumptuous sets and intricate costumes.

**Sun 15th 7pm (3-2)**

**Sun 8th 7pm (3-1)**

## HAUSER — Classic Gala Concert at the Royal Albert Hall

Experience two hours of breathtaking music with global cello sensation HAUSER in this unforgettable gala concert. His masterful performances bring classical masterpieces to life, blending passion, virtuosity, and emotion. From soaring melodies to intimate, delicate passages, HAUSER's artistry captivates and transports audiences.

**Sun 15th 3pm (3-2)**



**Sunday 8th**

- 6:00 3-2 **Ancient Roads from Christ to Constantine "Birth of a Faith"**  
3-1 *Margaret: The Rebel Princess Pt. 1*
- 7:00 3-2 **Barbra Streisand: Timeless – Live in Concert**  
3-1 *Forsytes: An Inside Look*  
3-1 *Riverdance*
- 8:00 3-2 **Tony Bennett: Viva Duets**  
3-3 *Antiques Roadshow*  
3-3 *This Old House*
- 9:00 3-2 **Last Days of Jesus Pt. 2**  
3-1 *Rick Steves's Europe*  
"Egypt's Nile, Alexandria, and Luxor"
- 10:30 3-1 *Bands of Enchantment "Annie Dirusso"*  
3-3 *Ask This Old House*
- 11:00 3-2 **Finding Your Roots**  
"Sharon Stone/Chrissy Teigen"  
3-1 *Puzzle Lady Pt. 3*  
3-3 *Motorweek*
- 11:30 3-3 *Texas Parks and Wildlife*
- 12:00 3-2 **Nova "Easter Island Origins"**  
3-1 *Hotel Portofino "Uncoverings" Pt. 3*  
3-3 *America's Heartland*

**Monday 9th**

- 6:00 3-2 **PBS News Hour**  
3-1 *PBS News Hour*
- 7:00 3-2 **Simon & Garfunkel: The Concert in Central Park**  
3-1 *Daniel O'Donnell from Castlebar, Ireland*
- 8:30 3-2 **Memory Makeover with Daniel Amen, MD**  
3-1 *Johnny Cash: We Walk the Line*
- 9:00 3-3 *Baking with Julia*
- 9:30 3-3 *This Old House*
- 10:00 3-2 **School of Greatness**  
"Top Hacks for Shredding Fat & Gaining Muscle"  
3-1 *Amanpour and Company*  
3-3 *Hotel Portofino Pt. 4*
- 10:30 3-2 **Texas Parks and Wildlife**
- 11:00 3-2 **Antiques Roadshow**  
"North Carolina Museum of Art"  
3-1 *PBS News Hour*  
3-3 *Hotel Portofino Pt. 5*
- 12:00 3-2 **PBS News Hour**  
3-1 *Craft in America "Democracy"*  
3-3 *Hotel Portofino Pt. 6*

**Tuesday 10th**

- 6:00 3-2 **PBS News Hour**  
3-1 *PBS News Hour*
- 7:00 3-2 **American Pop Flashback! Great Hits of the '60s & '70s**  
3-1 *Heal Your Gut, Sharpen Your Mind with Stephen Gundry, MD*
- 8:30 3-2 **Air Supply: 50th Anniversary Concert**  
3-1 *Roy Orbison Forever*  
3-3 *Baking with Julia*
- 9:00 3-3 *This Old House*
- 9:30 3-3 *This Old House*
- 10:00 3-2 **Einstein and Hawking: Masters of Our Universe Pt. 1**  
3-1 *Amanpour and Company*  
3-3 *Antiques Roadshow*
- 11:00 3-2 **Amanpour and Company**  
3-1 *PBS News Hour*  
3-3 *Antiques Roadshow*
- 12:00 3-2 **PBS News Hour**  
3-1 *10 Monuments That Changed America*  
3-3 *La Frontera with Pati Jinich*

**Wednesday 11th**

- 6:00 3-2 **PBS News Hour**  
3-1 *PBS News Hour*
- 7:00 3-2 **Il Volo in the Valley of the Temples**  
3-1 *Fleetwood Mac: The Dance*
- 8:30 3-2 **Heal Your Gut, Sharpen Your Mind with Stephen Gundry, MD**  
3-1 *Simon & Garfunkel: The Concert in Central Park*
- 9:00 3-3 *Baking with Julia*
- 9:30 3-3 *This Old House*
- 10:00 3-2 **Medical Frontiers**  
3-1 *Amanpour and Company*  
3-3 *10 Monuments That Changed America*
- 10:30 3-2 **This Old House**
- 11:00 3-2 **Amanpour and Company**  
3-1 *PBS News Hour*  
3-3 *10 Modern Marvels That Changed America*
- 12:00 3-2 **PBS News Hour**  
3-1 *The Letter: A Message for Our Earth*  
3-3 *Native America Pt. 2*

**Thursday 12th**

- 6:00 3-2 **PBS News Hour**  
3-1 *PBS News Hour*
- 7:00 3-2 **Deconstructing the Beatles, Pt. 1**  
3-1 *Country's Legendary Duets*
- 8:30 3-2 **More Deconstructing the Beatle, Pt. 2**  
3-1 *Kris Kristofferson: Life & Songs*  
3-3 *Baking with Julia*
- 9:00 3-3 *This Old House*
- 9:30 3-3 *This Old House*
- 10:00 3-2 **Woodsongs**  
3-1 *Amanpour and Company*  
3-3 *Animal Babies: First Year on Earth Pt. 1*
- 11:00 3-2 **Amanpour and Company**  
3-1 *PBS News Hour*  
3-3 *Animal Babies: First Year on Earth Pt. 2*
- 12:00 3-2 **PBS News Hour**  
3-1 *Laura Flanders & Friends*  
3-3 *Animal Babies: First Year on Earth Pt. 3*

**Friday 13th**

- 6:00 3-2 **PBS News Hour**  
3-1 *PBS News Hour*
- 7:00 3-2 **Market to Market**  
3-1 *Tony Bennett: Viva Duets*
- 7:30 3-2 **Consuelo Mack Wealthtrack**
- 8:00 3-2 **Washington Week**  
3-1 *Great Performances "Andrea Bocelli- The 30th Celebration"*
- 8:30 3-2 **Firing Line**
- 9:00 3-2 **Roy Orbison Forever**  
3-3 *Baking with Julia*
- 9:30 3-3 *This Old House*
- 10:00 3-1 *Amanpour and Company*  
3-3 *Volunteer Woodworker*
- 10:30 3-2 **In Search of Edgar Allan Poe Pt. 2**  
3-3 *Woodsmith Shop*
- 11:00 3-1 *PBS News Hour*  
3-3 *Joy of Painting*
- 11:30 3-3 *Painting and Travel*
- 12:00 3-2 **PBS News Hour**  
3-1 *Balancing Act with John Katko*  
3-3 *Joy of Painting with Nicholas Hankins*



**Eudora**

This intimate documentary explores the life and legacy of Mississippi writer Eudora Welty, whose Pulitzer Prize-winning novel *The Optimist's Daughter* and unforgettable stories such as *A Worn Path* helped define American literature. Set against the backdrop of Jackson, Mississippi, the film reveals her humor, daring, and deep insight into human nature.

- Tue 3rd 10pm (3-2)**
- Sun 29th 2pm (3-2)**
- Mon 16th 7pm (3-1)**

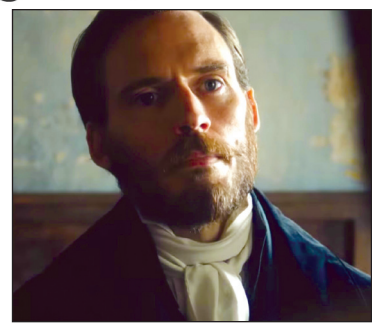
**MASTERPIECE**



**THE FORSYTES**

Desire, ambition, and betrayal simmer at the heart of this sumptuous costume drama. The six-part series chronicles the lives, loves, trials, and triumphs of a wealthy Victorian-era stockbroking family, whose generations struggle between tradition, duty, and personal happiness. Inspired by John Galsworthy's celebrated novels, "The Forsytes" portrays events that precede his books.

- Sun 8pm begins 22nd (3-2)**
- Wed 11am begins 25th (3-2)**
- Sun 7pm begins 22nd (3-1)**
- Mon 1pm begins 23rd (3-1)**



**THE COUNT OF MONTE CRISTO**

This lush six-part adaptation of Alexandre Dumas' classic stars Sam Claflin as Edmond Dantès, a nineteen-year-old sailor falsely accused of treason and imprisoned on a grim island fortress. After years of captivity, he escapes and discovers treasure, becoming one of the richest men in the world. With Jeremy Irons in a supporting role, the Count sets out on a daring quest for revenge against those who betrayed him.

- Sun 9pm begins 22nd (3-2)**
- Thu 11am begins 26th (3-2)**
- Sun 8pm begins 22nd (3-1)**
- Mon 2pm begins 23rd (3-1)**

# KENW-TV SCHEDULES 3-1 (HD), 3-2 (HD) AND 3-3 (SD)

KENW-TV considers Channel 3-2 to be its "main" channel and is listed below in bold. Channel 3-2 is carried by most TV cable systems in eastern New Mexico, along with the streaming platforms - Hulu + Live TV, LocalNow, the PBS app and YouTube TV.

Schedule 3-1 can be seen on the HD services of some cable companies. 3-1 is also carried by DirecTV and Dish Networks in most New Mexico counties. 3-3 is our Children's/Encore Channel (SD) and can only be seen over the air with an antenna.

3-4 is our FNX Channel (First Nations Experience) and is available at <https://fnx.org/schedule/>.

Those using antennas can receive all four channels in the following cities: Clovis/Portales; Hobbs/Lovington; Roswell; Artesia; Ft. Sumner; Tucumcari; Carlsbad; Ruidoso; Mescalero. KENW-TV digital transmitters are located in Artesia; Carlsbad; Ft. Sumner; Hobbs; Portales/Clovis; Roswell; Tucumcari; Ruidoso; and Mescalero.

## Saturday 14th

- 6:00 3-2 **Report from Santa Fe**  
3-1 *Antiques Roadshow*  
"North Carolina Museum of Art"
- 6:30 3-2 **America's Heartland**
- 7:00 3-2 **Barry Manilow: Live by Request**  
3-1 *Deconstructing the Beatles Pt. 1*
- 8:30 3-2 **Great Irish Songbook**  
3-1 *More Deconstructing the Beatles Pt. 2*  
3-3 *Humbler - Danny Gatton*
- 9:00 3-3 *Humbler - Danny Gatton*
- 10:00 3-2 **Nova "A.I. Revolution"**  
3-1 *Austin City Limits "Alanis Morissette"*  
3-3 *Classic Gospel*
- 11:00 3-2 **Nature "American Ocelot"**  
3-1 *10 Modern Marvels*  
*That Changed America*  
3-3 *Woodsongs*
- 12:00 3-2 **Austin City Limits**  
"Alanis Morissette"  
3-1 *Guardians of Yellowstone:*  
*The Yellowstone Cougar Project*  
3-3 *Song of the Mountains*

## Sunday 15th

- 6:00 3-2 **Ancient Roads from Christ to Constantine "Great Missionary"**  
3-1 *Margaret: The Rebel Princess Pt. 2*
- 7:00 3-2 **Forsytes: An Inside Look**  
3-1 *Great Irish Songbook*
- 8:00 3-2 **Pavarotti 90:**  
**The Man Who Moved the World**  
8:30 3-1 *Gregorian:*  
*Pure Chants Live in Prague*
- 9:00 3-3 *Antiques Roadshow*
- 10:00 3-2 **Homesteading**  
3-1 *Rick Steves' Europe*  
*"Ethiopia: A Development Story"*  
3-3 *This Old House*
- 10:30 3-1 *Bands of Enchantment "Sgt. Splendor"*  
3-3 *Ask This Old House*
- 11:00 3-2 **Finding Your Roots "Laurence Fishburne/Henry Louis Gates Jr."**  
3-1 *Puzzle Lady Pt. 4*  
3-3 *Motorweek*
- 11:30 3-3 *Texas Parks and Wildlife*

- 12:00 3-2 **Nova "A.I. Revolution"**  
3-1 *Lucy Worsley's Royal Palace Secrets*  
3-3 *America's Heartland*

## Monday 16th

- 6:00 3-2 **PBS News Hour**  
3-1 *PBS News Hour*
- 7:00 3-2 **Antiques Roadshow**  
"Women's Work"  
3-1 *Eudora*
- 8:00 3-2 **Antiques Roadshow**  
"Stan Hywet Hall & Gardens"  
3-1 *Homesteading*
- 9:00 3-2 **Cost of Caring**  
3-1 *Antiques Roadshow "Women's Work"*  
3-3 *Baking with Julia*
- 9:30 3-3 *This Old House*
- 10:00 3-2 **School of Greatness "Manifest Success with Daily Affirmations"**  
3-1 *Amanpour and Company*  
3-3 *Lucy Worsley's Royal Palace Secret*
- 10:30 3-2 **Texas Parks and Wildlife**
- 11:00 3-2 **Antiques Roadshow**  
"Women's Work"  
3-1 *PBS News Hour*  
3-3 *My Grandparents' War Pt. 2*
- 12:00 3-2 **PBS News Hour**  
3-1 *American Masters "Marlee Matlin: Not Alone Anymore"*  
3-3 *My Grandparents' War Pt. 3*

## Tuesday 17th

- 6:00 3-2 **PBS News Hour**  
3-1 *PBS News Hour*
- 7:00 3-2 **Finding Your Roots**  
"Alanis Morissette/Ciara"  
3-1 *American Masters "Marlee Matlin: Not Alone Anymore"*
- 8:00 3-2 **American Masters "Bella! This Woman's Place is in the House"**
- 9:00 3-1 *Finding Your Roots*  
*"Alanis Morissette/Ciara"*  
3-3 *Baking with Julia*
- 9:30 3-3 *This Old House*

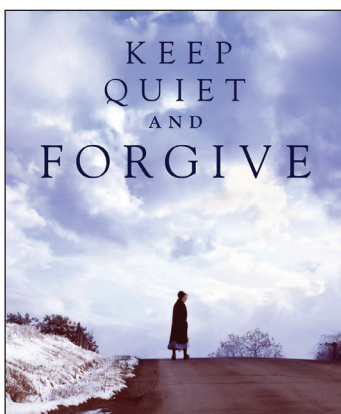
- 10:00 3-2 **Einstein and Hawking: Masters of Our Universe Pt. 2**  
3-1 *Amanpour and Company*  
3-3 *Antiques Roadshow*
- 11:00 3-2 **Amanpour and Company**  
3-1 *PBS News Hour*  
3-3 *Antiques Roadshow*
- 12:00 3-2 **PBS News Hour**  
3-1 *American Masters "Moynihan"*  
3-3 *La Frontera with Pati Jinich*

## Wednesday 18th

- 6:00 3-2 **PBS News Hour**  
3-1 *PBS News Hour*
- 7:00 3-2 **Nature "Portugal: Wild Land on the Edge"**  
3-1 *American Masters "Bella! This Woman's Place is in the House"*
- 8:00 3-2 **Nova "Pompeii's Secret Underworld"**
- 9:00 3-2 **Secrets of the Dead "Sunken Basilica"**  
3-1 *Nature "Portugal: Wild Land on the Edge"*  
3-3 *Baking with Julia*
- 9:30 3-3 *This Old House*
- 10:00 3-2 **Medical Frontiers**  
3-1 *Amanpour and Company*  
3-3 *Finding Your Roots*
- 10:30 3-2 **This Old House**
- 11:00 3-2 **Amanpour and Company**  
3-1 *PBS News Hour*  
3-3 *9 Lives of Barbara Dane*
- 12:00 3-2 **PBS News Hour**  
3-1 *Nova "Why Ships Crash"*  
3-3 *Native America Pt. 3*

## Thursday 19th

- 6:00 3-2 **PBS News Hour**  
3-1 *PBS News Hour*
- 7:00 3-2 **Homesteading**  
3-1 *My Music with Rhiannon Giddens*  
*"Wu Man" Pt. 1*
- 7:30 3-1 *Tradfest "A Haon" Pt. 1*
- 8:00 3-2 **Song of the Mountains "Laid Back Country Picker/Bob Sinclair"**  
3-1 *Red Green Show*  
*"Let Me Count the Ways"*
- 8:30 3-1 *You Should Know*
- 9:00 3-2 **Sportslook**  
3-1 *Superagers: Getting Old, Living Young*  
3-3 *Baking with Julia*
- 9:30 3-2 **Red Green Show "Stool Pigeons"**  
3-1 *Sportslook*  
3-3 *This Old House*
- 10:00 3-2 **Woodsongs**  
3-1 *Amanpour and Company*  
3-3 *Nature*
- 11:00 3-2 **Amanpour and Company**  
3-1 *PBS News Hour*  
3-3 *Nova*
- 12:00 3-2 **PBS News Hour**  
3-1 *Laura Flanders & Friends*  
3-3 *Secrets of the Dead*



Three decades after her assault, Lizzie confronts her Amish community's silence around sexual abuse and ignites a movement for justice and healing. "Keep Quiet and Forgive" follows Lizzie and fellow Amish and Mennonite survivors as they navigate trauma, faith, and family ties while challenging the long-held "forgive and forget" mindset.

**Mon 23rd 9pm (3-2)**  
**Fri 27th 9pm (3-1)**

# 3-2 Daytime

KENW-TV, Channel 3-4, Schedule for FNX available at [fnx.org/schedule](http://fnx.org/schedule).

## WEEKDAYS

- 1:00 am Classic Arts Showcase (4-1/2 hrs.)
- 5:30 am Wai Lana Yoga
- 6:00 am Classical Stretch
- 6:30 am BBC World News
- 7:00 am–11:00 am PBS Kids (M–Th, See page 9)
- 7:00 am–12:00 noon PBS Kids (Friday only)
- 11:00 am Cook's Country (M)
  - America's Test Kitchen (Tu)
  - Welcome to My Farm (W) (ends 18th)
  - Masterpiece "Forsytes" (W) (begins 25th)
  - Masterpiece "Count of Monte Cristo" (Th) (begins 26th)
- 11:30 am Pati's Mexican Table (M)
  - Fit 2 Stitch (Tu)
  - School of Greatness (W) (ends 18th)
  - Christina Cooks (Th) (ends 19th)
- 12:00 pm Sit and Be Fit (MWF)
  - Creative Living (TuTh)
- 12:30 pm J. Schwanke's Life in Bloom (M)
  - Fit 2 Stitch (Tu)
  - Fons & Porter's Love of Quilting (W)
  - Welcome to My Studio (Th)
  - Painting and Travel (F)
- 1:00 pm–4:30 pm PBS Kids (See page 9)
- 4:30 pm Gzero World (M)
  - Relish (Tu) (ends 17th)
  - Farmer and the Foodie (Tu) (begins 24th)
  - Jazzy Vegetarian (W)
  - Journeys In Japan (Th)
  - Painting with Wilson Bickford (F)
- 5:00 pm Washington Week (M)
  - Sara's Weeknight Meals (Tu)
  - News 3 New Mexico (W, except 11th)
  - Woodsmith Shop (Th)
  - News 3 New Mexico (F, except 13th)
- 5:30 pm BBC World News America

### Friday 20th

- 6:00 3-2 **PBS News Hour**
  - 3-1 PBS News Hour
- 7:00 3-2 **Market to Market**
  - 3-1 Washington Week
- 7:30 3-2 **Consuelo Mack Wealthtrack**
  - 3-1 Firing Line
- 8:00 3-2 **Washington Week**
  - 3-1 Nova "Pompeii's Secret Underworld"
- 8:30 3-2 **Firing Line**
- 9:00 3-2 **Great Performances at the Met "La Boheme"**
  - 3-1 The M Factor 2: Before the Pause-Perimenopause
  - 3-3 Baking with Julia
- 9:30 3-3 **This Old House**
- 10:00 3-1 **Amanpour and Company**
  - 3-3 Volunteer Woodworker
- 10:30 3-3 **Woodsmith Shop**
- 11:00 3-1 **PBS News Hour**
  - 3-3 Joy of Painting
- 11:30 3-2 **Florence: The Art of Magnificence**
  - 3-3 Painting and Travel
- 12:00 3-2 **PBS News Hour**
  - 3-1 Balancing Act with John Katko
  - 3-3 Joy of Painting with Nicholas Hankins

## SATURDAYS

- 1:00 am Classic Arts Showcase (5 hrs.)
- 6:00 am Woodsmith Shop (ends 14th)
  - Papa Ray's Vintage Vinyl Records (begins 21st)
- 6:30 am Texas Parks & Wildlife
- 7:00 am Relish
- 7:30 am Cook's Country
- 8:00 am America's Test Kitchen
- 8:30 am Sara's Weeknight Meals
- 9:00 am Milk Street
- 9:30 am Motorweek
- 10:00 am Garden Smart
- 10:30 am P. Allen Smith's Garden Home (ends 7th)
  - J. Schwanke's Life in Bloom (begins 14th)
- 11:00 am Canvasing the World (ends 7th)
  - Joy of Painting with Nicolas Hankins (begins 14th)
- 11:30 am Joy of Painting
- 12:00 pm Painting and Travel
- 12:30 pm Quilt in a Day
  - 1:00 pm Quilting Arts
- 1:30 pm Fons & Porter's Love of Quilting
- 2:00 pm Creative Living
- 2:30 pm Jazzy Vegetarian
- 3:00 pm Fork & Hammer (begins 7th)
- 3:30 pm This Old House
- 4:00 pm Ask This Old House
- 4:30 pm Welcome to My Studio
- 5:00 pm Sewing with Nancy
- 5:30 pm Fit 2 Stitch

### Saturday 21st

- 6:00 3-2 **Report from Santa Fe**
  - 3-1 Antiques Roadshow "Women's Work"
- 6:30 3-2 **America's Heartland**
- 7:00 3-2 **Lawrence Welk Show "Vacation Show"**
  - 3-1 Great Performances at the Met "La Boheme"
- 8:00 3-2 **Samantha Brown's Places to Love "Tampa, Florida"**
- 8:30 3-2 **Red Green Show "Swiss It Up"**
- 9:00 3-2 **Austin City Limits "Margo Price/Molly Tuttle & Golden Highway"**
  - 3-3 Lawrence Welk Show
- 9:30 3-1 **Bands of Enchantment "Sgt. Splendor"**
- 10:00 3-2 **Nova "Pompeii's Secret Underworld"**
  - 3-1 Austin City Limits "Margo Price/Molly Tuttle & Golden Highway"
  - 3-3 Classic Gospel
- 11:00 3-2 **Nature "Portugal: Wild Land on the Edge"**
  - 3-1 Nova "Pompeii's Secret Underworld"
  - 3-3 Woodsongs
- 12:00 3-2 **Austin City Limits "Margo Price/Molly Tuttle & Golden Highway"**
  - 3-1 Nature "Portugal: Wild Land on the Edge"
  - 3-3 Song of the Mountains

### Sunday 22nd

- 6:00 3-2 **Ancient Roads from Christ to Constantine "Age of the Apostles"**
  - 3-1 Call the Midwife Pt. 1

## SUNDAYS

- 1:00 am Classic Arts Showcase (5 hrs.)
- 6:00 am Painting and Travel
- 6:30 am Samantha Brown Places to Love
- 7:00 am Antiques Roadshow
- 8:00 am Classic Gospel
- 9:00 am Joy of Music
- 9:30 am Music and the Spoken Word
- 10:00 am Secrets of the Dead
- 11:00 am New Mexico in Focus
- 12:00 pm Pati's Mexican Table (except 22nd & 29th)
  - Cultura (22nd & 29th)
- 12:30 pm Texas Parks & Wildlife
- 1:00 pm Barbra Streisand – Timeless (1st)
  - Pavarottio 90 – 30th Celebration (8th)
  - Great Performances "Andrea Bocelli" (15th)
  - Today's Wild West (returns 22nd)
- 1:30 pm Closer to Truth's Global Philosophy of Religion
- 2:00 pm American Hemp Farmer (22nd)
  - Eudora (29th)
- 3:00 pm Celtic Woman 20th Anniversary (1st)
  - Heal Your Gut, Sharpen Your Mind (8th)
  - HAUSER – Classic Gala Concert (15th)
  - Medical Stories (returns 29th)
- 3:30 pm Medical Frontiers (returns 22nd)
- 4:00 pm Classic Gospel (returns 22nd)
- 5:00 pm You Should Know
- 5:30 pm Start Up
- 6:00 pm Florence: The Art of Magnificence (1st)
  - Ancient Roads: From Christ to Constantine "Birth of Faith" (begins 8th)

- 7:00 3-2 **Call the Midwife Pt. 1**
  - 3-1 Masterpiece "Forsytes" Pt. 1
- 8:00 3-2 **Masterpiece "Forsytes" Pt. 1**
  - 3-1 Masterpiece "Count of Monte Cristo" Pt. 1
- 9:00 3-2 **Masterpiece "Count of Monte Cristo" Pt. 1**
  - 3-1 Ancient Roads from Christ to Constantine "Birth of a Faith"
  - 3-3 Antiques Roadshow
- 10:00 3-2 **Call the Midwife Pt. 1**
  - 3-1 Rick Steves' Europe "Why We Travel"
  - 3-3 This Old House
- 10:30 3-1 **Bands of Enchantment "Midnight Generation"**
  - 3-3 Ask This Old House
- 11:00 3-2 **Finding Your Roots "Alanis Morissette/Ciara"**
  - 3-1 Puzzle Lady Pt. 5
  - 3-3 Motorweek
- 11:30 3-3 **Texas Parks and Wildlife**
- 12:00 3-2 **Nova "Pompeii's Secret Underworld"**
  - 3-1 Call the Midwife Pt. 1
  - 3-3 America's Heartland

### Monday 23rd

- 6:00 3-2 **PBS News Hour**
  - 3-1 PBS News Hour
- 7:00 3-2 **Antiques Roadshow "Coastal Maine Botanical Gardens"**
  - 3-1 American Hemp Farmer

# 3-1 Daytime

## MONDAYS

- 1:00 am Classic Arts Showcase (4 hrs.)
- 5:00 am Classical Stretch
- 5:30 am Happy Yoga
- 6:00 am New Mexico in Focus
- 7:00 am Burt Wolf: Travels & Traditions
- 7:30 am Curious Traveler
- 8:00 am Rick Steves' Europe
- 8:30 am Kitchen Queens: New Orleans
- 9:00 am Pati's Mexican Table
- 9:30 am Kevin Belton's New Orleans
- 10:00 am Central Texas Gardener
- 10:30 am Jazzy Vegetarian
- 11:00 am Classical Stretch
- 11:30 am Sit and Be Fit
- 12:00 pm Masterpiece "Hotel Portofino" Pt. 1 (2nd)  
Masterpiece "Hotel Portofino" Pt. 4 (9th)  
Lucy Worsleys Royal Palace Secrets (16th)  
Call the Midwife (begins 23rd)
- 1:00 pm Masterpiece "Hotel Portofino" Pt. 2 (2nd)  
Masterpiece "Hotel Portofino" Pt. 5 (9th)  
My Grandparents' War (16th)  
Masterpiece "The Forystes" (begins 23rd)
- 2:00 pm Masterpiece "Hotel Portofino" Pt. 3 (2nd)  
Masterpiece "Hotel Portofino" Pt. 6 (9th)  
My Grandparents' War (16th)  
Masterpiece "Count of Monte Cristo"  
(begins 23rd)
- 3:00 pm Travels with Darley (ends 23rd)  
Today's Wild West (begins 30th)
- 3:30 pm Crossing South
- 4:00 pm America's Heartland
- 4:30 pm Daytripper
- 5:00 pm Texas Parks and Wildlife
- 5:30 pm BBC World News America

## TUESDAYS

- 1:00 am Classic Arts Showcase (4 hrs.)
- 5:00 am Classical Stretch
- 5:30 am Happy Yoga
- 6:00 am Antiques Roadshow
- 7:00 am Relish
- 7:30 am Joseph Rosendo Steppin' Out (ends 3rd)  
Donal's Irish Adventure (begins 10th)
- 8:00 am Closer to Truth
- 8:30 am Healthy Minds
- 9:00 am School of Greatness
- 9:30 am Inside Senior Living (ends 24th)  
Maryon Stewart's Menopause (begins 31st)
- 10:00 am Wider World
- 10:30 am Healthful Indian Flavors
- 11:00 am Classical Stretch
- 11:30 am Happy Yoga
- 12:00 pm Christina Cooks
- 12:30 pm Life of Loi
- 1:00 pm Outdoor Eats (begins 3rd)
- 1:30 pm Taste of History
- 2:00 pm Antiques Roadshow
- 3:00 pm Antiques Roadshow
- 4:00 pm Consuelo Mack WealthTrack
- 4:30 pm Start Up
- 5:00 pm Firing Line
- 5:30 pm BBC World News America

## WEDNESDAYS

- 1:00 am Classic Arts Showcase (4 hrs.)
- 5:00 am Classical Stretch
- 5:30 am Happy Yoga
- 6:00 am By the River
- 6:30 am Start Up
- 7:00 am Travels with Darley
- 7:30 am Crossing South
- 8:00 am This Old House
- 8:30 am Ask This Old House
- 9:00 am Welcome to My Farm
- 9:30 am J. Schwanke's Life in Bloom
- 10:00 am Volunteer Woodworker
- 10:30 am Woodsmith Shop
- 11:00 am Classical Stretch
- 11:30 am Sit and Be Fit
- 12:00 pm Sara's Weeknight Meals
- 12:30 pm Cook's Country
- 1:00 pm Steven Raichlen's Project Fire
- 1:30 pm Tim Farmer's Country Kitchen
- 2:00 pm Great American Recipe
- 3:00 pm Finding Your Roots
- 4:00 pm Lidia's Kitchen
- 4:30 pm America's Test Kitchen
- 5:00 pm News 3 New Mexico (except 11th)
- 5:30 pm BBC World News America

## THURSDAYS

- 1:00 am Classic Arts Showcase (4 hrs.)
- 5:00 am Classical Stretch
- 5:30 am Happy Yoga
- 6:00 am Story in the Public Square
- 6:30 am Canada Files
- 7:00 am Texas Parks & Wildlife
- 7:30 am This American Land
- 8:00 am Les Stroud's Wild Harvest
- 8:30 am Taste of History
- 9:00 am Fons & Porters Love of Quilting
- 9:30 am Quilting Arts
- 10:00 am Quilt in a Day
- 10:30 am Fit 2 Stitch
- 11:00 am Classical Stretch
- 11:30 am Happy Yoga
- 12:00 pm Milk Street
- 12:30 pm French Magnolia Cooks
- 1:00 pm New Scandinavian Cooking
- 1:30 pm Kitchen Queens: New Orleans
- 2:00 pm Nature
- 3:00 pm Secrets of the Dead
- 4:00 pm Nova
- 5:00 pm Balancing Act with John Katko
- 5:30 pm BBC World News America



## FRIDAYS

- 1:00 am Classic Arts Showcase (4 hrs.)
- 5:00 am Classical Stretch
- 5:30 am Healing Yoga
- 6:00 am America's Heartland
- 6:30 am Garden Smart
- 7:00 am Song of the Mountains
- 8:00 am Life of a Musician
- 8:30 am Woodsongs Kids
- 9:00 am Radio Bristol's Farm and Fun Time
- 10:00 am Joy of Painting
- 10:30 am Painting and Travel
- 11:00 am Classical Stretch
- 11:30 am Sit and Be Fit
- 12:00 pm This Old House
- 12:30 pm Ask This Old House
- 1:00 pm Joy of Painting
- 1:30 pm Sewing with Nancy
- 2:00 pm Chef's Life (ends 5th)  
Kitchen Curious (begins 13th)
- 2:30 pm Weekends with Yankee
- 3:00 pm Samantha Brown's Places to Love
- 3:30 pm Relish
- 4:00 pm To Dine For (ends 20th)  
She Was First (begins 27th)
- 4:30 pm Gzero World with Ian Bremmer
- 5:00 pm News 3 New Mexico (except 13th)
- 5:30 pm BBC World News America

## SATURDAYS

- 11:00 am Kevin Belton's New Orleans
- 11:30 am Pati's Mexican Table
- 12:00 pm This Old House
- 12:30 pm This Old House
- 1:00 pm Ask This Old House
- 1:30 pm Motorweek
- 2:00 pm Paint This with Jerry Yarnell
- 2:30 pm Steven Raichlen's Planet BBQ
- 3:00 pm America's Test Kitchen
- 3:00 pm Cook's Country
- 4:00 pm Nature
- 5:00 pm Horizons from PBS News
- 5:30 pm Report from Santa Fe

## SUNDAYS

- 11:00 am Washington Week
- 11:30 am Roadtrip Nation (except 22nd & 29th)  
Cultura (22nd & 29th)
- 12:00 pm New Mexico in Focus
- 1:00 pm Consuelo Mack WealthTrack
- 1:30 pm Market to Market
- 2:00 pm Designing Your Ideal Future (1st)  
Social Security and You (8th)  
Heal Your Gut, Change Your Brain (15th)  
Garden Smart (returns 22nd)
- 2:30 pm J. Schwanke Life in Bloom (returns 22nd)
- 3:00 pm She Was First (begins 22nd)
- 3:30 pm Showstoppers! Great Women  
of TV Variety (1st)  
America Made with Love (8th)  
Julia Child: Best Bites (15th)  
Climate California (begins 22nd)
- 4:00 pm Nova
- 5:00 pm Compass Points from PBS News
- 5:30 pm Closer to Truth

# Our KENW Supporters

Please join us in thanking and supporting these businesses and organizations that help make our programming possible.

## In Support of KENW-TV

Anderson Bethany Funeral Home and Crematory, Roswell	James Polk Stone Community Bank Clovis, Eunice, Hagerman, Hobbs, Portales, Roswell, Carlsbad
Chaves County Farm and Livestock Bureau, Dexter and Roswell	Kiwanis Club of Portales
Clovis Community College Cultural Arts Series	Living Desert Zoo & Gardens State Park, Carlsbad
Eastern New Mexico News, Clovis and Portales	New Mexico Department of Agriculture Plateau, Clovis
Eastern New Mexico University, Portales	Roosevelt County Electric Cooperative
Farmers' Electric Cooperative, Inc. of NM, Clovis	Security State Bank, Farwell, TX
Friends of the Living Desert, Carlsbad	Valley Mower Clinic, Inc., Clovis Yucca, Portales

## In Support of KENW-FM

American AgCredit	Loka Creative
Border Soil & Water District	Mental Health Resources Inc.
City of Carlsbad	New Mexico Arts
First Christian Church (Disciples of Christ), Carlsbad	NM Economic Development
JF Maddox Foundation	NM Health Care Authority
LifeHouse of Carlsbad	Roosevelt Soil & Water District Taco Box, Clovis and Portales

Call KENW for TV or Evelyn Ledbetter for FM  
at 575 562-2112 to add your support.

*Thank You for Your Support!*

8:00 3-2 **Antiques Roadshow**  
"Stan Hywet Hall & Gardens"  
8:30-1 *Built to Last: The Legacy of the Civilian  
Conservation Corps in Minnesota*  
9:00 3-2 **Independent Lens**  
"Keep Quiet and Forgive"  
3-1 *Antiques Roadshow*  
*"Coastal Maine Botanical Gardens"*  
3-3 *Baking with Julia*  
9:30 3-3 *This Old House*  
10:00 3-1 *Amanpour and Company*  
3-3 *Call the Midwife Pt. 1*  
10:30 3-2 **Texas Parks and Wildlife**  
11:00 3-2 **Antiques Roadshow**  
"Coastal Maine Botanical Gardens"  
3-1 *PBS News Hour*  
3-3 *Masterpiece "Forsytes" Pt. 1*  
12:00 3-2 **PBS News Hour**  
3-1 *Independent Lens*  
*"Keep Quiet and Forgive"*  
3-3 *Masterpiece*  
*"Count of Monte Cristo" Pt. 1*

### Tuesday 24th

6:00 3-2 **PBS News Hour**  
3-1 *PBS News Hour*  
7:00 3-2 **Finding Your Roots**  
"Lea Salonga/Amanda Seyfried"  
3-1 *Breaking the Deadlock*  
8:00 3-2 **Breaking the Deadlock, Pt. 4**  
3-1 *9 Lives of Barbara Dane*  
9:00 3-2 **White with Fear**  
3-1 *Finding Your Roots*  
*"Lea Salonga/Amanda Seyfried"*  
3-3 *Baking with Julia*  
9:30 3-3 *This Old House*  
10:00 3-1 *Amanpour and Company*  
3-3 *Antiques Roadshow*  
10:30 3-2 **Stroke: The Circle of Healing**  
11:00 3-2 **Amanpour and Company**  
3-1 *PBS News Hour*  
3-3 *Antiques Roadshow*  
12:00 3-2 **PBS News Hour**  
3-1 *White with Fear*  
3-3 *World of Olive Oil*

### Wednesday 25th

6:00 3-2 **PBS News Hour**  
3-1 *PBS News Hour*  
7:00 3-2 **Nature "Meet the Raptors:  
A Fistful of Daggers"**  
3-1 *White with Fear*  
8:00 3-2 **Nova**  
"Baltimore Bridge Collapse"  
8:30 3-1 *Fire Lives Here*  
9:00 3-2 **Secrets of the Dead**  
"King Arthur's Lost Kingdom"  
3-1 *Nature "Meet the Raptors:  
A Fistful of Daggers"*  
3-3 *Baking with Julia*  
9:30 3-3 *This Old House*  
10:00 3-2 **Medical Frontiers**  
3-1 *Amanpour and Company*  
3-3 *Finding Your Roots*  
10:30 3-2 **This Old House**  
11:00 3-2 **Amanpour and Company**  
3-1 *PBS News Hour*  
3-3 *Breaking the Deadlock*  
12:00 3-2 **PBS News Hour**  
3-1 *Nova "Baltimore Bridge Collapse"*  
3-3 *Native America Pt. 4*

### Thursday 26th

6:00 3-2 **PBS News Hour**  
3-1 *PBS News Hour*  
7:00 3-2 **Breaking the Deadlock, Pt. 4**  
3-1 *My Music with Rhiannon Giddens*  
*"A Do" Pt.*  
7:30 3-1 *Tradfest "A Do"*  
8:00 3-2 **Song of the Mountains**  
"Michael Reno Harrell"  
3-1 *Red Green Show "Pardi Gras"*  
8:30 3-1 *You Should Know*

9:00 3-2 **Sportslook**  
3-1 *Cultura*  
3-3 *Baking with Julia*  
9:30 3-2 **Red Green Show "Celebrity"**  
3-1 *Sportslook*  
3-3 *This Old House*  
10:00 3-2 **Woodsongs**  
3-1 *Amanpour and Company*  
3-3 *Nature*  
11:00 3-2 **Amanpour and Company**  
3-1 *PBS News Hour*  
3-3 *Nova*  
12:00 3-2 **PBS News Hour**  
3-1 *Laura Flanders & Friends*  
3-3 *Secrets of the Dead*

### Friday 27th

6:00 3-2 **PBS News Hour**  
3-1 *PBS News Hour*  
7:00 3-2 **Market to Market**  
3-1 *Washington Week*  
7:30 3-2 **Consuelo Mack Wealthtrack**  
3-1 *Firing Line*  
8:00 3-2 **Washington Week**  
3-1 *Nova "Baltimore Bridge Collapse"*  
8:30 3-2 **Firing Line**  
9:00 3-2 **Martha Graham Dance Company:  
We Are Our Time "American Spirit"  
Pt. 1**  
3-1 *Independent Lens*  
*"Keep Quiet and Forgive"*  
3-3 *Baking with Julia*  
9:30 3-3 *This Old House*  
10:00 3-3 *Volunteer Woodworker*

10:30 3-2 **Beethoven's 9th - Ode to Joy**  
3-1 *Amanpour and Company*  
3-3 *Woodsmith Shop*  
11:00 3-3 *Joy of Painting*  
11:30 3-1 *PBS News Hour*  
3-3 *Painting and Travel*  
12:00 3-2 **PBS News Hour**  
3-3 *Joy of Painting with Nicholas Hankins*

### Saturday 28th

6:00 3-2 **Report from Santa Fe**  
3-1 *Antiques Roadshow*  
*"Coastal Maine Botanical Gardens"*  
6:30 3-2 **America's Heartland**  
7:00 3-2 **Lawrence Welk Show**  
"Love Songs"  
3-1 *Martha Graham Dance Company:  
We Are Our Time "American Spirit" Pt. 2*  
8:00 3-2 **Samantha Brown's Places to Love**  
"The Food Special"  
8:30 3-2 **Red Green Show "Implosion"**  
3-1 *Great Performances*  
*"Tiler Peck: Suspending Time"*  
9:00 3-2 **Austin City Limits**  
"Robert Glasper/Domi and JD Beck"  
3-3 *Lawrence Welk Show*  
9:30 3-1 *Bands of Enchantment*  
*"Midnight Generation"*  
10:00 3-2 **Nova**  
"Baltimore Bridge Collapse"  
3-1 *Austin City Limits*  
*"Robert Glasper/Domi and JD Beck"*  
3-3 *Classic Gospel*

# PBS KIDS

## Channel 3-2

### WEEKDAYS

- 7:00 am Lyla in the Loop
- 7:30 am Carl the Collector
- 8:00 am Daniel Tiger's Neighborhood
- 8:30 am Phoebe & Jay
- 9:00 am Sesame Street
- 9:30 am Work It Out Wombats!
- 10:00 am Donkey Hodie
- 10:30 am Rosie's Rules
- 11:00 am Albie's Elevator (F)
- 11:30 am Mister Rogers (F)
- 1:00 pm Elinor Wonders Why
- 1:30 pm Alma's Way
- 2:00 pm Molly of Denali
- 2:30 pm Weather Hunters
- 3:00 pm **Wild Kratts**
- 3:30 pm Arthur
- 4:00 pm Odd Squad



Join Chris and Martin Kratt in "Wild Kratts," a series for children ages 4 to 8! In each episode, the Kratt Brothers travel to a different corner of the world to meet amazing new animals and learn about them and their habitats. It's all wrapped up in engaging stories of laugh-out-loud adventure and mystery as the Kratt Brothers activate their creature power suits to rescue their animal friends!

## Channel 3-3

### WEEKDAYS

- 4:00 am Arthur
- 4:30 am Odd Squad
- 5:00 am **Wild Kratts**
- 5:30 am Weather Hunters
- 6:00 am Lyla in the Loop
- 6:30 am Carl the Collector
- 7:00 am Daniel Tiger's Neighborhood
- 7:30 am Phoebe & Jay
- 8:00 am Sesame Street
- 8:30 am Work It Out Wombats!
- 9:00 am Donkey Hodie
- 9:30 am Rosie's Rules
- 10:00 am Elinor Wonders Why
- 10:30 am Alma's Way
- 11:00 am Molly of Denali
- 11:30 am Xavier Riddle & the Secret Museum
- 12:00 pm Arthur
- 12:30 pm Odd Squad
- 1:00 pm **Wild Kratts**
- 1:30 pm Weather Hunters
- 2:00 pm Lyla in the Loop
- 2:30 pm Carl the Collector
- 3:00 pm Daniel Tiger's Neighborhood
- 3:30 pm Phoebe & Jay
- 4:00 pm Sesame Street
- 4:30 pm Work It Out Wombats!
- 5:00 pm Donkey Hodie
- 5:30 pm Rosie's Rules
- 6:00 pm Elinor Wonders Why
- 6:30 pm Alma's Way
- 7:00 pm Molly of Denali
- 7:30 pm Weather Hunters
- 8:00 pm Arthur
- 8:30 pm Odd Squad

### SATURDAYS

- 4:00 am Mister Rogers
- 4:30 am Arthur
- 5:00 am **Wild Kratts**
- 5:30 am Weather Hunters
- 6:00 am Lyla in the Loop
- 6:30 am Carl the Collector
- 7:00 am Daniel Tiger's Neighborhood
- 7:30 am Phoebe & Jay
- 8:00 am Sesame Street
- 8:30 am Work It Out Wombats!
- 9:00 am Donkey Hodie
- 9:30 am Rosie's Rules
- 10:00 am Elinor Wonders Why
- 10:30 am Cyberchase
- 11:00 am Curious Crew
- 11:30 am Mia & Codie/Vegesaurs
- 12:00 pm Wimee's Words
- 12:30 pm Mister Rogers
- 1:00 pm Arthur
- 1:30 pm Weather Hunters
- 2:00 pm Alma's Way
- 2:30 pm Lyla in the Loop
- 3:00 pm Carl the Collector
- 3:30 pm Daniel Tiger's Neighborhood
- 4:00 pm Phoebe & Jay
- 4:30 pm Sesame Street
- 5:00 pm Work It Out Wombats!
- 5:30 pm Donkey Hodie
- 6:00 pm Rosie's Rules
- 6:30 pm Alma's Way
- 7:00 pm Cyberchase
- 7:30 pm **Wild Kratts**
- 8:00 pm Arthur
- 8:30 pm Mister Rogers

### SUNDAYS

- 4:00 am Mister Rogers
- 4:30 am Arthur
- 5:00 am **Wild Kratts**
- 5:30 am Weather Hunters
- 6:00 am Lyla in the Loop
- 6:30 am **Wild Kratts**
- 7:00 am Daniel Tiger's Neighborhood
- 7:30 am Phoebe & Jay
- 8:00 am Sesame Street
- 8:30 am Work It Out Wombats!
- 9:00 am Donkey Hodie
- 9:30 am Rosie's Rules
- 10:00 am Elinor Wonders Why
- 10:30 am Cyberchase
- 11:00 am Curious Crew
- 11:30 am Infinite Art Hunt
- 12:00 pm Wimee's Words
- 12:30 pm Mister Rogers
- 1:00 pm Arthur
- 1:30 pm Weather Hunters
- 2:00 pm Alma's Way
- 2:30 pm Lyla in the Loop
- 3:00 pm Wild Kratts
- 3:30 pm Daniel Tiger's Neighborhood
- 4:00 pm Phoebe & Jay
- 4:30 pm Sesame Street
- 5:00 pm Work It Out Wombats!
- 5:30 pm Donkey Hodie
- 6:00 pm Rosie's Rules
- 6:30 pm Alma's Way
- 7:00 pm Cyberchase
- 7:30 pm **Wild Kratts**
- 8:00 pm Arthur
- 8:30 pm Mister Rogers



## Channel 3-1

### SATURDAYS

- 5:00 am Mister Rogers
- 5:30 am Arthur
- 6:00 am **Wild Kratts**
- 6:30 am Weather Hunters
- 7:00 am Lyla in the Loop
- 7:30 am Carl the Collector
- 8:00 am Daniel Tiger's Neighborhood
- 8:30 am Phoebe & Jay
- 9:00 am Sesame Street
- 9:30 am Work It Out Wombats!
- 10:00 am Donkey Hodie
- 10:30 am Rosie's Rules

### SUNDAYS

- 5:00 am Mister Rogers
- 5:30 am Arthur
- 6:00 am **Wild Kratts**
- 6:30 am Weather Hunters
- 7:00 am Lyla in the Loop
- 7:30 am Carl the Collector
- 8:00 am Daniel Tiger's Neighborhood
- 8:30 am Phoebe & Jay
- 9:00 am Sesame Street
- 9:30 am Work It Out Wombats!
- 10:00 am Donkey Hodie
- 10:30 am Rosie's Rules

# KENW-FM Radio Week at-a-Glance

KENW-FM, Portales, NM, 89.5 MHz — KMTN-FM, Maljamar, NM, 98.7 MHz — KENM-FM, Tucumcari, NM, 88.9 MHz —  
 KENU-FM, Des Moines, NM, 88.5 MHz — KENG-FM, Ruidoso, NM, 88.5 MHz — KENE-FM, Raton, NM, 88.1 MHz —  
 KNMJ-FM, Eunice, NM, 100.9 MHz — KENY-FM, Wagon Mound, NM, 90.5 MHz —  
 KENP-FM, Las Vegas, NM, 88.1 MHz — KENB-FM, Roswell, NM, 90.9 MHz

Translators: Apache Springs, 90.9 MHz; Clayton, 93.5 MHz; Des Moines, 106.1MHz; Ft. Sumner, 91.7MHz

	Sunday	Monday	Tuesday	Wednesday	Thursday	Friday	Saturday	Monday through Friday					
5:00	Travel with Rick Steves	Morning Edition	Morning Edition	Morning Edition	Morning Edition	Morning Edition	5:00 a.m. People's Pharmacy	Weather: 5:18, 6:18, and 7:18 a.m. Regional News: 5:33, 6:33, and 7:33 a.m. 5:06 Innovation Now 5:42 The Post Perspective 5:49 Melinda's Garden Moment 6:06 Climate Connections 6:42 Science Update 6:49 90 Second Naturalist 7:06 Innovation Now 7:42 The Post Perspective 7:49 Melinda's Garden Moment 8:10 Sno Country Ski Report Marketplace Report 8:15 Animal Airwaves (MWF) Kindness Moment (Tu, Th) 8:20 All About Ag (M-Th) Travelers in the Night (W) Dumb Ideas that Changed the World (F) 8:30 Health in a Heartbeat 8:45 The Story of the Writing 9:00 Weather/News 9:15 Marketplace Tech Report 9:30 Disability Awareness 9:45 EarthDate 10:00 Weather/News/Regional News 10:15 Engines of Our Ingenuity 10:30 Composers' Datebook 10:45 Author's Corner 11:00 Weather/News 11:06 KENW Local News 11:15 Melinda's Garden Moment 11:30 The Plant Detective 11:45 Climate Connections 12:00 Weather/News/Regional News 12:30 Today in Rock & Roll History 12:35 Sno Country Ski Report Great Arts at Eastern (Th) 12:45 People's Pharmacy News (M) Poetry Now (T) Dumb Ideas (W) Medical Discoveries News (Th) Science and the Sea (F) 1:00 Weather/News 1:08 KENW Local News 1:06 Asian View 1:15 Sound Beat 1:20 A Southwest Spotlight (W) 1:30 Loh Down on Science 1:45 StarDate 2:00 Weather/News/Regional News 2:15 Bird Note 2:30 Sno Country Ski Report The American Storyteller 2:45 90 Second Naturalist/Innovation Now 4:20 Earthdate 4:33 Evening Regional News 4:50 Weather 5:20 The Plant Detective 5:33 Evening Regional News 5:50 Weather 6:57 StarDate/Weather 9:00 Weather/News 12:00 and 3:00 a.m. Weather/News					
6:00	Weekend Edition						8:10 a.m. ENMU Weekly Calendar 8:20 a.m. Ag Segments		8:20 a.m. Ag Segments	8:10 a.m. ENMU Weekly Calendar 8:20 a.m. Ag Segments	8:20 a.m. Ag Segments	8:20 a.m. Ag Segments	6:00 a.m. Weekend Edition
7:00													8:00 a.m. Planet Money & How I Built This
8:00	With Heart and Voice	Music News & Features	Music News & Features	Music News & Features	Music News & Features	Music News & Features	9:00 a.m. Wait, Wait... Don't Tell Me						
9:00	Footlight Parade						9:00 a.m. The Bioneers						
10:00	Radiolab						10:00 a.m. You Should Know						
11:00	Fresh Air Weekend with Terry Gross						Metropolitan Opera						
12:00	People's Pharmacy (R)												
1:00	This American Life												
2:00	Freakonomics												
3:00	Mountain Stage								3:00 p.m. Report from Santa Fe				
3:00							Best of Knowledge		51 Percent	With Good Reason	2:30 p.m. A Way with Words	2:30 p.m. Nothing Funny About Money (when length of opera permits)	
3:30							Marketplace		Marketplace	Marketplace	Marketplace	Marketplace	3:00 p.m. Classical Guitar Alive
4:00		All Things Considered	All Things Considered	All Things Considered	All Things Considered	All Things Considered	4:00 p.m. WoodSongs						
4:30							5:00 p.m. E-Town						
5:00	Alt Latino	PBS NewsHour	PBS NewsHour	PBS NewsHour	PBS NewsHour	PBS NewsHour	All Things Considered						
5:30	All Songs Considered												
6:00	All Things Considered	Chicago Symphony Orchestra	New York Philharmonic	European Broadcast Union	Collector's Corner	Concierto with Frank Dominguez Fiesta!	Swingin' Down the Lane						
7:00	The Chamber Music Society Of Lincoln Center												
8:00	Exploring Music	Performance Today	Performance Today	Performance Today	Performance Today	Performance Today	Jazz Night in America						
9:00	The Spanish Hour												
10:00	Performance Today												
11:00	Classical Music Out of the Night until 5:00 a.m.	Classical Music Out of the Night until 5:00 a.m.	Classical Music Out of the Night until 5:00 a.m.	Classical Music Out of the Night until 5:00 a.m.	Classical Music Out of the Night until 5:00 a.m.	Classical Music Out of the Night until 5:00 a.m.	Classical Music Out of the Night until 5:00 a.m. when Travel with Rick Steves						

The Q2-3 Program Guide (Cue to 3) is published each month by the Broadcast Center, a non-profit public service division of Eastern New Mexico University.

The guide is available to friends contributing \$35 per year or more to the support of public broadcasting. Senior Citizen and Student memberships are available for \$25. All contributions are tax deductible. Donations should be made payable to Friends of KENW-TV or to Friends of KENW-FM.

Telephone: (575) 562-2112. Toll-free 1-888-FOR-KENW (367-5369).

Fax: (575) 562-2590

Mailing Address:  
KENW-TV/FM

52 Broadcast Center, ENMU  
1500 South Avenue K  
Portales, NM 88130

Website: www.kenw.org

E-Mail: kenwtv@enmu.edu kenwfm@enmu.edu

Eastern New Mexico University is an affirmative action and equal opportunity employer. The University does not discriminate on the basis of race, color, national origin, religion, sex (including pregnancy, gender identity, and sexual orientation), age, disability, genetic information, veteran status, or any other protected status in its programs, activities, or employment. People seeking additional information about the University's non-discrimination policy should contact the Affirmative Action Officer at Station 9.

**KENW-TV/FM**  
**Eastern New Mexico**  
**University**

*Opera News*  
Saturdays, 11:00 am  
On FM Radio

**The Metropolitan  
Opera**

March 7:  
**LES TROYENS À CARTHAGE  
(LES TROYENS,  
PART TWO - Berlioz)**

March 14:  
**MADAMA BUTTERFLY  
(Puccini)**

March 21:  
**TRISTAN UND ISOLDE  
(Wagner) – New Production**

March 28:  
**LA TRAVIATA  
(Verdi)**

- 11:00 3-2 **Nature "Meet the Raptors:  
A Fistful of Daggers"**  
3-1 Nova "Baltimore Bridge Collapse"  
3-3 Woodsongs
- 12:00 3-2 **Austin City Limits  
"Robert Glasper/Domi and JD Beck"**  
3-1 Nature "Meet the Raptors:  
A Fistful of Daggers"  
3-3 Song of the Mountains

***Sunday 29th***

- 6:00 3-2 **Ancient Roads from Christ to  
Constantine "From Apocalypse  
to Heresies"**  
3-1 Call the Midwife Pt. 2
- 7:00 3-2 **Call the Midwife Pt. 2**  
3-1 Masterpiece "Forsytes" Pt. 2
- 8:00 3-2 **Masterpiece "Forsytes" Pt. 2**  
3-1 Masterpiece  
"Count of Monte Cristo" Pt. 2
- 9:00 3-2 **Masterpiece  
"Count of Monte Cristo" Pt. 2**  
3-1 Ancient Roads from Christ to  
Constantine "The Great Missionary"  
3-3 Antiques Roadshow
- 10:00 3-2 **Call the Midwife Pt. 2**  
3-1 Rick Steves' Europe  
"Art of Prehistoric Europe"  
3-3 This Old House
- 10:30 3-1 **Bands of Enchantment  
"Adrian Quesada Trio Asesino"**  
3-3 Ask This Old House
- 11:00 3-2 **Finding Your Roots  
"Lea Salonga/Amanda Seyfried"**  
3-1 Puzzle Lady Pt. 6  
3-3 Motorweek
- 11:30 3-3 **Texas Parks and Wildlife**
- 12:00 3-2 **Nova  
"Baltimore Bridge Collapse"**  
3-1 Call the Midwife Pt. 2  
3-3 America's Heartland



**Duane W. Ryan**  
(1932-2023)  
Founding Director

***Monday 30th***

- 6:00 3-2 **PBS News Hour**  
3-1 PBS News Hour
- 7:00 3-2 **Antiques Roadshow "Castle Farms"**  
3-1 Henry David Thoreau  
"Who Are We?" Pt. 1
- 8:00 3-2 **Henry David Thoreau  
"Who Are We?" Pt. 1**  
3-1 Henry David Thoreau  
"Being Alive" Pt. 2
- 9:00 3-2 **Henry David Thoreau  
"Being Alive" Pt. 2**  
3-1 Antiques Roadshow "Castle Farms"  
3-3 Baking with Julia
- 9:30 3-3 **This Old House**
- 10:00 3-2 **School of Greatness "Healthy  
Relationships & Emotions:  
Keys to a Longer Lifespan"**  
3-1 Amanpour and Company  
3-3 Call the Midwife Pt. 2
- 10:30 3-2 **Texas Parks and Wildlife**
- 11:00 3-2 **Antiques Roadshow  
"Castle Farms"**  
3-1 PBS News Hour  
3-3 Masterpiece "Forsytes" Pt. 2
- 12:00 3-2 **PBS News Hour**  
3-1 Henry David Thoreau  
"Who Are We?" Pt. 1  
3-3 Masterpiece  
"Count of Monte Cristo" Pt. 2

***Tuesday 31st***

- 6:00 3-2 **PBS News Hour**  
3-1 PBS News Hour
- 7:00 3-2 **Finding Your Roots  
"Debra Messing/Melanie Lynskey"**  
3-1 Henry David Thoreau  
"Several More Lives to Live" Pt. 3
- 8:00 3-2 **Henry David Thoreau  
"Several More Lives to Live" Pt. 3**  
3-1 Rowdy Girl
- 9:00 3-2 **You Should Know**  
3-1 Finding Your Roots  
"Debra Messing/Melanie Lynskey"  
3-3 Baking with Julia
- 9:30 3-2 **Cultura**  
3-3 This Old House
- 10:00 3-2 **Frontline "The Deal: Trump,  
Bukele & the Gangs of El Salvador"**  
3-1 Amanpour and Company  
3-3 Antiques Roadshow
- 11:00 3-2 **Amanpour and Company**  
3-1 PBS News Hour  
3-3 Henry David Thoreau Pt. 1
- 12:00 3-2 **PBS News Hour**  
3-1 Henry David Thoreau  
"Several More Lives to Live" Pt. 3  
3-3 Henry David Thoreau Pt. 2

**OUR KENW STAFF**

**BROADCAST CENTER**

- Founding Director*  
**Duane W. Ryan**  
*Director of Broadcasting*  
**Porfirio Delgado**  
*Accountant*  
**Crystal Sawyer**  
*Engineering Director*  
**Porfirio Delgado**  
*Engineers*  
**Michael Chandler**  
**Jerry Rose**  
**John Bamforth**

**KENW-TV STAFF**

- Programming Director*  
**Sean Moore**  
*Operations Director*  
**Justin Robertson**  
*Development/Promotion Director, TV*  
**Joshua Gonzales**  
*Master Control Operator, TV*  
**David Asplund**  
**Doris Blandford**  
**Wade Martin**  
**Paige Gard**  
*Administrative Assistant*  
**Karina Hernandez**  
*Producer/Director, TV*  
**Allan Crawford**  
**Pablito Herrera**  
*Editorial Assistant*  
**Wanda Newberry**

**KENW-FM STAFF**

- Development/Promotion Director, FM*  
**Evelyn Ledbetter**  
*Operations Director, FM*  
**Shannon Hearn**  
*Audio Engineer*  
**Mickey Morgan**  
*News and Public Affairs Director, FM*  
**Kevin L. Robbins**  
*Administrative Assistant*  
**Suzanne West**

**ENMU**

- President/System Chancellor*  
**Dr. James Johnston**  
*Vice President for Academic Affairs*  
**Dr. Jamie Laurenz**  
*Vice President for Advancement/PR*  
**Mr. Warren Lloyd**  
*Executive Director for System  
Information Technology (EDSIT)*  
**Ms. Erin Morgan**  
*Chief Financial Officer*  
**Mr. Tony Major**  
*Vice President for Student Affairs*  
**Dr. Christy Johanson**

## CALL THE MIDWIFE

Season 15 opens in 1971, following a momentous year at Nonnatus House marked by marriages, departures, and mounting financial uncertainty. As England enters a period of profound social change, including the rise of the Women's Liberation movement, the midwives navigate shifting expectations alongside demanding medical cases, from premature births to life-threatening illness.

**Sun 7pm/10pm begins 22nd (3-2)**  
**Sun 6pm begins 22nd (3-1)**  
**Mon 12pm begins 23rd (3-1)**



## White with Fear

This explosive documentary examines how elements of America's conservative political machine have pursued power by exploiting racial fault lines and promoting narratives of White victimization. Told by operatives and insiders in the rooms where strategy was shaped, this film traces decades of political tactics, media influence, and the consequences of fear-based division in American society.

**Tue 24th 9pm (3-2)**  
**Wed 25th 7pm (3-1)**

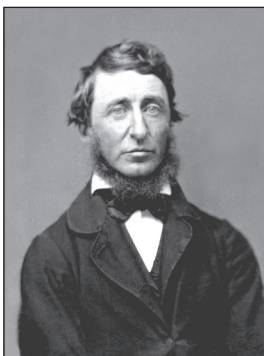
## Martha Graham Dance Company: We Are Our Time

This two-part documentary celebrates Martha Graham, the fiercely original artist whose groundbreaking work reshaped modern dance. Through her struggles, conflicts, and triumphs, the film shows how Graham's vision continues to inspire dancers, artists, and audiences worldwide. In 2026, the Martha Graham Dance Company—the oldest and longest-running dance company in the U.S.—marks its centennial.



**Fri 9pm begins 27th (3-2)**  
**Sat 7pm begins 28th (3-1)**

## HENRY DAVID THOREAU



This three-part film explores the life and work of 19th-century writer Henry David Thoreau against the backdrop of antebellum New England and a changing United States. Examining universal themes—our connection to nature, living authentically, the individual's relationship to the state, and the impact of race—the series traces Thoreau's journey from his early years to his engagement with the moral crises of his time, including industrialization, slavery, war, and environmental change.

**Mon 30th 8pm & 9pm Pts. 1 & 2 (3-2)**  
**Tues 31st 8pm Pt. 3 (3-2)**  
**Mon 30th 7pm & 8pm Pts. 1 & 2 (3-1)**  
**Tues 31st 7pm Pt. 3 (3-1)**