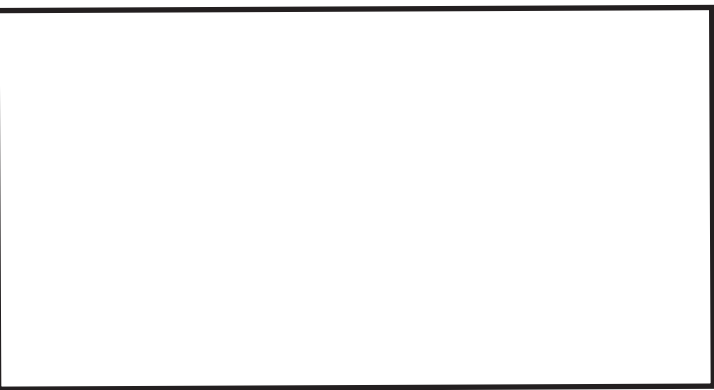


Program Guide KENW-TV/FM
 Eastern New Mexico University
 June 2026

Q2.3



Non-Profit Org.
 US Postage
PAID
 State Group

kenw
 PBS npr
 Eastern New Mexico
 University
 1500 S. Avenue K
 Portales, NM 88130



Dumb Ideas that Changed the World is a KENW-FM program hosted by Jeff Gentry that explores the surprising mistakes, missteps, and misguided decisions that have shaped history in unexpected ways. Blending insight with humor, the show offers an entertaining and thought-provoking look at how even the worst ideas can leave a lasting mark on the world.

KENW FM 89.5 Radio:
Wednesdays 12:45pm
Fridays 8:25am



TV

KENW-TV/FM

Scan QR code to donate!
 Thank You for Your Support!



FM

You Should Know



Sponsored by:



Primetime

Monday 1st

- 6:00 3-2 **PBS News Hour**
3-1 *PBS News Hour*
- 7:00 3-2 **Life on Earth:**
Attenborough's Greatest Adventure
3-1 *Great Performances "Josh Groban: An Evening at Union Chapel"*
- 8:30 3-2 **Women of World War II: More Untold Stories**
- 9:00 3-1 *Rick Steves Why We Travel*
3-3 *Baking with Julia*
- 9:30 3-3 *Ask This Old House*
- 10:00 3-2 **School of Greatness**
"Overcome the Fear of Failure"
3-1 *Amanpour and Company*
3-3 *Margaret: The Rebel Princess Pt. 1*
- 10:30 3-2 **Texas Parks and Wildlife**
- 11:00 3-2 **Antiques Roadshow**
"Cheekwood Estate & Gardens"
3-1 *PBS News Hour*
3-3 *Margaret: The Rebel Princess Pt. 2*
- 12:00 3-2 **PBS News Hour**
3-1 *Dad's Secret War: France 1944*
3-3 *Masterpiece "Downton Abbey" Pt. 3*

Tuesday 2nd

- 6:00 3-2 **PBS News Hour**
3-1 *PBS News Hour*
- 7:00 3-2 **Great Performances "Broadway Musicals: A Jewish Legacy"**
3-1 *Antiques Roadshow "250 Years of Americana"*
- 8:30 3-1 *Celebrating America 250: Made with Love*

- 9:00 3-2 **Rick Steves Why We Travel**
3-3 *Baking with Julia*
- 9:30 3-3 *Ask This Old House*
- 10:00 3-2 **Facing the Wind**
3-1 *Amanpour and Company*
3-3 *Antiques Roadshow*
- 11:00 3-2 **Amanpour and Company**
3-1 *PBS News Hour*
3-3 *Antiques Roadshow*
- 12:00 3-2 **PBS News Hour**
3-1 *Omaha Beach: Honor and Sacrifice*
3-3 *We'll Meet Again Pt. 3*

Wednesday 3rd

- 6:00 3-2 **PBS News Hour**
3-1 *PBS News Hour*
- 7:00 3-2 **Antiques Roadshow**
"250 Years of Americana"
3-1 *Great Performances "Broadway Musicals: A Jewish Legacy"*
- 8:00 3-2 **Celebrating America 250: Made with Love**
- 9:00 3-1 *Rick Steves Why We Travel*
3-3 *Baking with Julia*
- 9:30 3-3 *Ask This Old House*
- 10:00 3-2 **Medical Frontiers**
3-1 *Amanpour and Company*
3-3 *Eating History*
- 10:30 3-2 **This Old House**
- 11:00 3-2 **Amanpour and Company**
3-1 *PBS News Hour*
3-3 *Facing the Wind*
- 12:00 3-2 **PBS News Hour**
3-1 *Why Dinosaurs?*
3-3 *Waal River Crossing: 1944*

Thursday 4th

- 6:00 3-2 **PBS News Hour**
3-1 *PBS News Hour*
- 7:00 3-2 **Great Performances "Josh Groban: An Evening at Union Chapel"**
3-1 *Life on Earth: Attenborough's Greatest Adventure*
- 8:30 3-1 *Highwaymen Live at Nassau Coliseum*
- 9:00 3-2 **Rick Steves Why We Travel**
3-3 *Baking with Julia*
- 9:30 3-3 *Ask This Old House*
- 10:00 3-2 **Live from the Old Steeple**
3-1 *Amanpour and Company*
3-3 *Wildside with Nick Molle: Australia*
- 11:00 3-2 **Amanpour and Company**
3-1 *PBS News Hour*
3-3 *Why Dinosaurs?*
- 12:00 3-2 **PBS News Hour**
3-1 *Laura Flanders & Friends*
3-3 *Dad's Secret War: France 1944*

Friday 5th

- 6:00 3-2 **PBS News Hour**
3-1 *PBS News Hour*
- 7:00 3-2 **Our Favorite Things About Grantchester**
3-1 *Women of World War II: More Untold Stories*
- 8:30 3-2 **Luther Vandross: Live at Wembley**
3-1 *Woody Guthrie at 100! Live at the Kennedy Center*
- 9:00 3-3 *Baking with Julia*
- 9:30 3-3 *Ask This Old House*

SUMMER fest 2026

May 30-June 7



In 1976, David Attenborough set out on the most ambitious project of his career: a natural history series unlike anything television had attempted before. This special tells the story behind *Life on Earth*, the groundbreaking production that changed wildlife filmmaking forever and helped define Attenborough's legacy.

Mon 1st 7pm (3-2)
Sun 7th 10:30am (3-2)
Thu 4th 7pm (3-1)
Sun 7th 7pm (3-1)

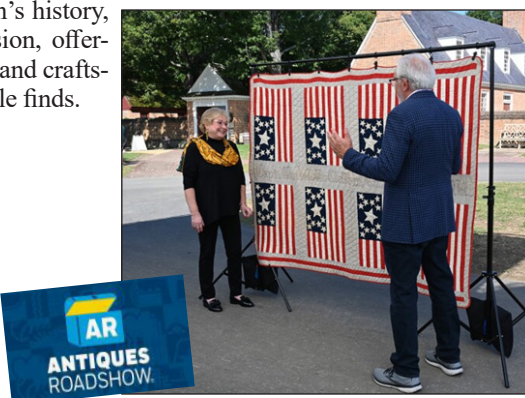
KENW-TV's Summer Pledge Drive runs May 30-June 7, and your support makes a difference. Viewer contributions help keep the programs you value on the air, from trusted PBS favorites to educational and inspiring content for all ages. 100% of every pledge goes toward the cost of programming.

Make your pledge today by calling 1-888-367-5369 or give online 24/7 at KENW.ORG. Select "Pledge," choose "KENW-TV," and click "Pledge to TV Now."

250 Years of Americana

In this special edition of *ANTIQUES ROADSHOW*, discoveries reflecting 250 years of American history take center stage. The program highlights remarkable objects that showcase the nation's history, innovation, and artistic expression, offering viewers a look at the stories and craftsmanship behind these memorable finds.

Wed 3th 7pm (3-2)
Sun 7th 7pm (3-2)
Mon 29th 7pm (3-2)
Mon 29th 11pm (3-2)
Tue 2th 7pm (3-1)
Sun 7th 10:30am (3-1)
Mon 29th 9pm (3-1)
Tue 30th 6am (3-1)
Tue 30th 2pm (3-1)



- 10:00 3-2 **King Who Fooled Hitler**
3-1 *Amanpour and Company*
3-3 *American Woodshop*
- 10:30 3-3 *Woodsmith Shop*
- 11:00 3-2 **Ship That Turned Back**
3-1 *PBS News Hour*
3-3 *Joy of Painting*
- 11:30 3-2 **American Muslims: A History Revealed "Asian in the Southwest"**
3-3 *Painting and Travel*
- 12:00 3-2 **PBS News Hour**
3-1 *Balancing Act with John Katko*
3-3 *Joy of Painting with Nicholas Hankins*

Saturday 6th

- 6:00 3-2 **Report from Santa Fe**
3-1 *Antiques Roadshow*
"Cheekwood Estate & Gardens"
- 6:30 3-2 **America's Heartland**
- 7:00 3-2 **Women of World War II: More Untold Stories**
3-1 *Our Favorite Things*
About Grantchester
- 8:30 3-2 **Woody Guthrie at 100! Live at the Kennedy Center**
3-1 *Luther Vandross: Live at Wembley*
- 9:00 3-3 *Lawrence Welk: A North Dakota Farm Boy*

- 10:00 3-2 **Why Dinosaurs?**
3-1 *Austin City Limits "11th Annual Hall of Fame Honors My Morning Jacket"*
3-3 *Classic Gospel*
- 11:00 3-2 **Wildside with Nick Molle: Australia**
3-1 *Why Dinosaurs?*
3-3 *Woodsongs*
- 12:00 3-2 **Austin City Limits "11th Annual Hall of Fame Honors My Morning Jacket"**
3-1 *Wildside with Nick Molle: Australia*
3-3 *Song of the Mountains*

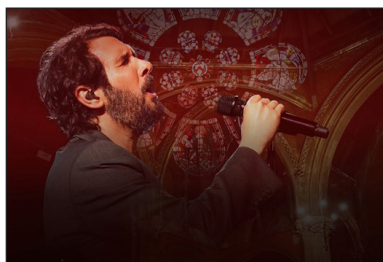
Sunday 7th

- 6:00 3-2 **Breakthrough: The Ideas that Changed the World "Telescope"**
3-1 *Dad's Secret War: France 1944*
- 7:00 3-2 **Antiques Roadshow "250 Years of Americana"**
3-1 *Life on Earth: Attenborough's Greatest Adventure*
- 8:30 3-2 **Celebrating America 250: Made with Love**
3-1 *Women of World War II: More Untold Stories*
- 9:00 3-3 *Antiques Roadshow*
- 10:00 3-2 **Masterpiece "Downton Abbey" Pt. 4**
3-1 *Masterpiece "Downton Abbey" Pt. 4*
3-3 *This Old House*

- 10:30 3-3 *Ask This Old House*
- 11:00 3-3 *Motorweek*
- 11:30 3-2 **If I Could Stay/ Si Pudiera Queda**
3-1 *Social Security: 90 Years Strong*
3-3 *Texas Parks and Wildlife*
- 12:00 3-1 *Victoria & Albert: The Wedding Pt. 1*
3-3 *America's Heartland*

Monday 8th

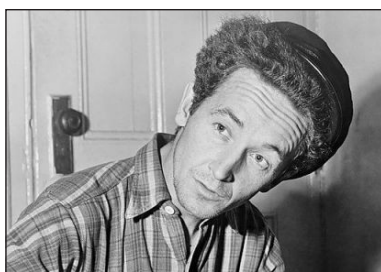
- 6:00 3-2 **PBS News Hour**
3-1 *PBS News Hour*
- 7:00 3-2 **Antiques Roadshow "Never Seen That Before!"**
3-1 *King Who Fooled Hitler*
- 8:00 3-2 **War of 1812**
3-1 *Michalopoulos - The Art of Celebration*
- 9:00 3-1 *Antiques Roadshow "Never Seen That Before!"*
3-3 *Baking with Julia*
- 9:30 3-3 *Ask This Old House*
- 10:00 3-2 **School of Greatness "Intermittent Fasting"**
3-1 *Amanpour and Company*
3-3 *Victoria & Albert: The Wedding Pt. 1*
- 10:30 3-2 **Texas Parks and Wildlife**



Josh Groban: An Evening at Union Chapel

Josh Groban returns to PBS in a special concert staged in the intimate and historic setting of London's Union Chapel. Personal and beautifully staged, the performance showcases Groban's powerful voice in a setting that brings warmth and immediacy to the evening.

Thu 4th 7pm (3-2)
Mon 1st 7pm (3-1)



Woody Guthrie at 100! Live at the Kennedy Center

Celebrate the centennial of Woody Guthrie's birth with a concert honoring the music and legacy of one of America's greatest folk singers. Recorded live at the John F. Kennedy Center for the Performing Arts, the special features performances by artists including John Mellencamp, Jackson Browne, Tom Morello, Donovan, Ani DiFranco, Rosanne Cash, and Old Crow Medicine Show.

Sat 6th 8:30pm (3-2)
Fri 5th 8:30pm (3-1)



The Highwaymen Live at Nassau Coliseum

Johnny Cash, Waylon Jennings, Kris Kristofferson, and Willie Nelson — country music's legendary Highwaymen — take the stage in this 1990 live concert from Nassau Coliseum. Packed with classic songs and unforgettable personalities, the special captures four icons sharing one stage at the height of their collective power.

Sun 7th 12pm (3-2)
Thu 4th 8:30pm (3-1)



Celebrating America 250: Made with Love

This special episode of the Emmy Award-winning *Made with Love* series shines a spotlight on American artisans who keep the country's founding spirit alive. Created to commemorate the 250th anniversary of the Declaration of Independence, the program travels across the country celebrating makers whose work reflects the traditions, creativity, and craftsmanship that helped shape the nation. From boat-builders to blacksmiths to a glassblower reviving an ancient art, these artisans illustrate the many cultures that built America.

Sun 7th 8:30pm (3-2)
Wed 3th 8:30pm (3-2)
Tue 2th 8:30pm (3-1)
Sun 7th 12pm (3-1)

- 11:00 3-2 **Antiques Roadshow**
"Never Seen That Before!"
- 3-1 *PBS News Hour*
- 3-3 *Victoria & Albert: The Wedding Pt. 2*
- 12:00 3-2 **PBS News Hour**
- 3-1 *Cure for Hate*
- 3-3 *Masterpiece "Downton Abbey" Pt. 4*

Tuesday 9th

- 6:00 3-2 **PBS News Hour**
- 3-1 *PBS News Hour*
- 7:00 3-2 **Finding Your Roots**
"America Ferrera/Darren Criss"
- 3-1 *War of 1812*
- 8:00 3-2 **American Experience "Woodstock: 3 Days that Defined a Generation"**
- 9:00 3-1 *Finding Your Roots*
"America Ferrera/Darren Criss"
- 3-3 *Baking with Julia*
- 9:30 3-3 *Ask This Old House*
- 10:00 3-2 **Armadillo Man: The Trips of Jim Franklin**
- 3-1 *Amanpour and Company*
- 3-3 *Antiques Roadshow*
- 10:30 3-2 **Aging Matters: Aging with Pride**
- 11:00 3-2 **Amanpour and Company**
- 3-1 *PBS News Hour*
- 3-3 *Antiques Roadshow*
- 12:00 3-2 **PBS News Hour**
- 3-1 *If I Could Stay/ Si Pudiera Quedarme*
- 3-3 *We'll Meet Again Pt. 4*

Wednesday 10th

- 6:00 3-2 **PBS News Hour**
- 3-1 *PBS News Hour*
- 7:00 3-2 **Nature "Museum Alive with David Attenborough"**
- 3-1 *Facing the Wind*
- 8:00 3-2 **Nova "Alaskan Dinosaurs"**
- 3-1 *Secrets of the Dead "Ben Franklin's Bones"*
- 9:00 3-2 **Secrets of the Dead "Ben Franklin's Bones"**
- 3-1 *Nature "Museum Alive with David Attenborough"*
- 3-3 *Baking with Julia*
- 9:30 3-3 *Ask This Old House*
- 10:00 3-2 **Medical Frontiers**
- 3-1 *Amanpour and Company*
- 3-3 *Finding Your Roots*
- 10:30 3-2 **This Old House**
- 11:00 3-2 **Amanpour and Company**
- 3-1 *PBS News Hour*
- 3-3 *American Experience*
- 12:00 3-2 **PBS News Hour**
- 3-1 *Nova "Alaskan Dinosaurs"*

Thursday 11th

- 6:00 3-2 **PBS News Hour**
- 3-1 *PBS News Hour*
- 7:00 3-2 **Buskers New York**
- 3-1 *My Music with Rhiannon Giddens "Karan Casey" Pt. 6*
- 7:30 3-1 *Tradfest "A Se" Pt. 6*
- 8:00 3-2 **Song of the Mountains "Ricky Skaggs/Kentucky Thunder"**
- 3-1 *Bands of Enchantment "Max Gomez"*
- 8:30 3-1 *You Should Know*
- 9:00 3-2 **You Should Know**
- 3-1 *The Ship that Turned Back*
- 3-3 *Baking with Julia*
- 9:30 3-2 **Bands of Enchantment "Pacifica"**
- 3-1 *Aging Matters: Aging with Pride*
- 3-3 *Ask This Old House*
- 10:00 3-2 **Live from the Old Steeple**
- 3-1 *Amanpour and Company*
- 3-3 *Nature*
- 11:00 3-2 **Amanpour and Company**
- 3-1 *PBS News Hour*
- 3-3 *Nova*

- 12:00 3-2 **PBS News Hour**
- 3-1 *Laura Flanders & Friends*
- 3-3 *Secrets of the Dead*

Friday 12th

- 6:00 3-2 **PBS News Hour**
- 3-1 *PBS News Hour*
- 7:00 3-2 **Market to Market**
- 3-1 *Washington Week*
- 7:30 3-2 **Consuelo Mack Wealthtrack**
- 8:00 3-2 **Washington Week**
- 3-1 *Nova "Alaskan Dinosaurs"*
- 8:30 3-2 **Firing Line**
- 9:00 3-2 **American Masters "Janis Ian: Breaking Silence"**
- 3-1 *If I Could Stay/ Si Pudiera Quedarme*
- 3-3 *Baking with Julia*
- 9:30 3-3 *Ask This Old House*
- 10:00 3-1 *Amanpour and Company*
- 3-3 *American Woodshop*
- 10:30 3-3 *Woodsmith Shop*
- 11:00 3-2 **Michalopoulos- The Art of Celebration**
- 3-1 *PBS News Hour*
- 3-3 *Joy of Painting*
- 11:30 3-3 *Painting and Travel*
- 12:00 3-2 **PBS News Hour**
- 3-1 *Balancing Act with John Katko*
- 3-3 *Painting with Wilson Bickford*

- 6:00 3-2 **Report from Santa Fe**
- 3-1 *Antiques Roadshow "Never Seen That Before!"*
- 6:30 3-2 **America's Heartland**
- 7:00 3-2 **Lawrence Welk Show "Tribute to the Sweet & Swing Bands"**
- 3-1 *American Masters "Janis Ian: Breaking Silence"*
- 8:00 3-2 **Curious Traveler "Curious Warsaw"**
- 8:30 3-2 **Red Green Show "Pardi Gras"**
- 9:00 3-2 **Austin City Limits "Norah Jones/ Hurray for the Riff Raff"**
- 3-1 *Texas Monthly Presents: The Story "Changing Landscapes"*
- 3-3 *Lawrence Welk Show*
- 9:30 3-1 *Bands of Enchantment "Adrian Quesada Trio Asesino"*
- 10:00 3-2 **Nova "Alaskan Dinosaurs"**
- 3-1 *Austin City Limits "Norah Jones/Hurray for the Riff Raff"*
- 3-3 *Classic Gospel*
- 11:00 3-2 **Nature "Museum Alive with David Attenborough"**
- 3-1 *Nova "Alaskan Dinosaurs"*
- 3-3 *Woodsongs*
- 12:00 3-2 **Austin City Limits "Norah Jones/ Hurray for the Riff Raff"**
- 3-1 *Nature "Museum Alive with David Attenborough"*
- 3-3 *Song of the Mountains*



You Should Know

KENW-TV's You Should Know will highlight one of eastern New Mexico's most important agricultural industries in an upcoming interview with Joey Martin, General Manager of Dairy Farmers of America in Portales. Hosted by Evelyn Ledbetter, the program explores the role dairy farming plays in the region's economy, workforce, and agricultural identity. During the interview, Martin shares his path into agriculture and the dairy industry while discussing DFA's mission and impact at both the local and national levels. The conversation offers viewers a closer look at the daily operations of the Portales facility and the factors that have helped make eastern New Mexico a key region for dairy production. The program also examines the technology shaping modern dairy operations, along with the safety and quality standards required in today's industry. Martin discusses challenges facing dairy producers, including water availability, economic pressures, and the need for continued innovation in agriculture. In addition, the interview highlights DFA's involvement in the Portales community and its commitment to supporting future generations of dairy farmers and local residents. Martin explains why strong community connections remain essential to the cooperative's success.

You Should Know continues to spotlight the people, businesses, and organizations making a difference across eastern New Mexico and west Texas. Presentation of You Should Know on KENW FM is made possible in part by Dairy Farmers of America.

KENW-TV
Sun 14th 5pm (3-2)
Thu 18th 9pm (3-2)
Thu 18th 8:30pm (3-1)

KENW-FM Radio
Fri 13th 10:30am
Wed 17th 3pm

KENW-TV SCHEDULES 3-1 (HD), 3-2 (HD) AND 3-3 (SD)

KENW-TV considers Channel 3-2 to be its "main" channel and is listed below in bold. Channel 3-2 is carried by most TV cable systems in eastern New Mexico, along with the streaming platforms - Hulu + Live TV, LocalNow, the PBS app and YouTube TV.

Schedule 3-1 can be seen on the HD services of some cable companies. 3-1 is also carried by DirecTV and Dish Networks in most New Mexico counties. 3-3 is our Children's/Encore Channel (SD) and can only be seen over the air with an antenna.

3-4 is our FNX Channel (First Nations Experience) and is available at <https://fnx.org/schedule/>.

Those using antennas can receive all four channels in the following cities: Clovis/Portales; Hobbs/Lovington; Roswell; Artesia; Ft. Sumner; Tucumcari; Carlsbad; Ruidoso; Mescalero. KENW-TV digital transmitters are located in Artesia; Carlsbad; Ft. Sumner; Hobbs; Portales/Clovis; Roswell; Tucumcari; Ruidoso; and Mescalero.

Sunday 14th

- 6:00 **3-2 Iconic America "Fenway Park"**
3-1 *Patience "Vampire" Pt. 1*
- 7:00 **3-2 Patience "Vampire" Pt. 1**
3-1 *Masterpiece "Grantchester" Pt. 1*
- 8:00 **3-2 Masterpiece "Grantchester" Pt. 1**
3-1 *Masterpiece "Downton Abbey" Pt. 1*
- 9:00 **3-2 Masterpiece "Downton Abbey" Pt. 1**
3-3 *Antiques Roadshow*
- 10:00 3-1 *Rick Steves' Europe*
"Art of the 20th Century"
3-3 *This Old House*
- 10:30 3-1 *Bands of Enchantment*
"Arrested Development"
3-3 *Ask This Old House*
- 11:00 **3-2 Finding Your Roots**
"America Ferrera/Darren Criss"
3-1 *We'll Meet Again*
"Saved in Vietnam" Pt. 1
3-3 *Motorweek*
- 11:30 3-3 *Texas Parks and Wildlife*
- 12:00 **3-2 Nova "Alaskan Dinosaurs"**
3-1 *Patience "Vampire" Pt. 1*
3-3 *America's Heartland*

Monday 15th

- 6:00 **3-2 PBS News Hour**
3-1 *PBS News Hour*
- 7:00 **3-2 Antiques Roadshow "Crystal Bridges Museum of American Art"**
3-1 *American Experience "Woodstock: 3 Days that Defined a Generation"*
- 8:00 **3-2 Antiques Roadshow "Crystal Bridges Museum of American Art"**
- 9:00 **3-2 Last Twins**
3-1 *Antiques Roadshow "Crystal Bridges Museum of American Art"*
3-3 *Baking with Julia*
- 9:30 3-3 *Ask This Old House*
- 10:00 3-1 *Amanpour and Company*
3-3 *Patience "Vampire" Pt. 1*
- 10:30 **3-2 Texas Parks and Wildlife**
- 11:00 **3-2 Antiques Roadshow "Crystal Bridges Museum of American Art"**
3-1 *PBS News Hour*
3-3 *Masterpiece "Grantchester" Pt. 1*
- 12:00 **3-2 PBS News Hour**
3-1 *Last Twins*
3-3 *Masterpiece "Downton Abbey" Pt. 1*

- 11:00 3-1 *PBS News Hour*
3-3 *Antiques Roadshow*
- 11:30 **3-2 Amanpour and Company**
- 12:00 3-1 *Becoming Katharine Graham*
3-3 *We'll Meet Again Pt. 5*

Wednesday 17th

- 6:00 **3-2 PBS News Hour**
3-1 *PBS News Hour*
- 7:00 **3-2 Nature "Wildheart"**
3-1 *Wired for Connection*
- 8:00 **3-2 Nova "Secrets of the Forest"**
3-1 *The Kimberley: Australia's Wild West "River of Life" Pt. 1*
- 9:00 **3-2 The Kimberley: Australia's Wild West "River of Life" Pt. 1**
3-1 *Nature "Wildheart"*
3-3 *Baking with Julia*
- 9:30 3-3 *Ask This Old House*
- 10:00 **3-2 Medical Frontiers**
3-1 *Amanpour and Company*
3-3 *Finding Your Roots*
- 10:30 **3-2 This Old House**
- 11:00 **3-2 Amanpour and Company**
3-1 *PBS News Hour*
3-3 *Becoming Katharine Graham*
- 12:00 **3-2 PBS News Hour**
3-1 *Nova "Secrets of the Forest"*

Tuesday 16th

- 6:00 **3-2 PBS News Hour**
3-1 *PBS News Hour*
- 7:00 **3-2 Finding Your Roots**
"Wiz Khalifa/Sanaa Lathan"
3-1 *Amerigo: The Search for the American Dream*
- 8:00 **3-2 Becoming Katharine Graham**
- 8:30 3-1 *Social Security: 90 Years Strong*
- 9:00 3-1 *Finding Your Roots*
"Wiz Khalifa/Sanaa Lathan"
3-3 *Baking with Julia*
- 9:30 3-3 *Ask This Old House*
- 10:00 **3-2 Amerigo: The Search for the American Dream**
3-1 *Amanpour and Company*
3-3 *Antiques Roadshow*

Thursday 18th

- 6:00 **3-2 PBS News Hour**
3-1 *PBS News Hour*
- 7:00 **3-2 Amerigo: The Search for the American Dream**
3-1 *Radio Bristol's Pt. 1*
- 8:00 3-1 *Bands of Enchantment "Lilly Hiatt"*
- 8:30 **3-2 Caverns Sessions "Steeldrivers"**
3-1 *You Should Know*
- 9:00 **3-2 You Should Know**
3-1 *Cultura*
3-3 *Baking with Julia*



Cultura on KENW PBS is a nationally syndicated series that celebrates the history, culture, and spirit of New Mexico. Narrated by Pablito Herrera and directed and produced by Pablito Herrera, the program takes viewers across the Land of Enchantment through powerful storytelling, stunning landscapes, and rich cultural traditions. From Indigenous and Spanish history to Chicano communities, music, food, and art, Cultura highlights the people and stories that continue to shape New Mexico's identity. More than a television series, Cultura serves as a tribute to the heritage, beauty, and future of the Southwest.

- Sun 14th 12pm (3-2)**
- Sun 28th 12pm (3-2)**
- Sun 14th 11:30am (3-1)**
- Thu 18th 9pm (3-1)**
- Sun 28th 11:30am (3-1)**

Local News Coverage with Kevin Robbins

The Local News Coverage with Kevin Robbins gives KENW-FM listeners a reliable source for timely local updates, essential news, and community-focused reporting from across eastern New Mexico and the surrounding area. As part of KENW-FM's weekday news and features lineup, the newscasts help listeners stay informed about regional developments, local events, and the issues affecting communities throughout the area.

- Monday through Friday**
- 5:33am, 6:33am,**
- 7:33am, 11:06am,**
- 1:06pm, 4:33pm, 5:33pm**



3-2 Daytime

KENW-TV, Channel 3-4, Schedule for FNX available at fnx.org/schedule.

WEEKDAYS

- 1:00 am Classic Arts Showcase (4-1/2 hrs.)
- 5:30 am Wai Lana Yoga
- 6:00 am Classical Stretch
- 6:30 am BBC World News
- 7:00 am–11:00 am PBS Kids (M–Th, See page 9)
- 7:00 am–12:00 noon PBS Kids (Friday only)
- 11:00 am Cook's Country (M)
America's Test Kitchen (Tu)
Key Ingredients (W)
Sara's Weeknight Meals (Th)
- 11:30 am Pati's Mexican Table (M)
Fit 2 Stitch (Tu)
School of Greatness (W)
Christina Cooks (Th)
- 12:00 pm Sit and Be Fit (MWF)
Creative Living (TuTh)
- 12:30 pm J. Schwanke's Life in Bloom (M)
Pati's Mexican Table (Tu, ends 2nd)
Follow the Blooms (Tu, begins 9th)
Fons & Porter's Love of Quilting (W)
Welcome to My Studio (Th)
Painting and Travel (F)
- 1:00 pm–4:30 pm PBS Kids (See page 9)
- 4:30 pm Gzero World (M)
Kitchen Curious (Tu)
Jazzy Vegetarian (W)
Journeys In Japan (Th)
Medical Stories (F, ends 19th)
Balancing Act (F, begins 26th)
- 5:00 pm Washington Week (M)
Sara's Weeknight Meals (Tu)
Travel Detective (W, ends 10th)
Joseph Rosendo's Steppin' Out (W, begins 17th)
Start Up (Th)
Grown Up Dad (F)
- 5:30 pm BBC World News America

- 9:30 3-2 Bands of Enchantment**
"La Vida Boheme"
3-1 *Juneteenth Jamboree*
"From a Free Place to Displace"
3-3 *Ask This Old House*
- 10:00 3-2 Live from the Old Steeple**
3-1 *Amanpour and Company*
3-3 *Nature*
- 11:00 3-2 Amanpour and Company**
3-1 *PBS News Hour*
3-3 *Nova*
- 12:00 3-2 PBS News Hour**
3-1 *Laura Flanders & Friends*
3-3 *The Kimberley: Australia's Wild West*
"River of Life" Pt. 1

Friday 19th

- 6:00 3-2 PBS News Hour**
3-1 *PBS News Hour*
- 7:00 3-2 Market to Market**
3-1 *Washington Week*
- 7:30 3-2 Consuelo Mack Wealthtrack**
3-1 *Firing Line*
- 8:00 3-2 Washington Week**
3-1 *Nova* "Secrets of the Forest"
- 8:30 3-2 Firing Line**
- 9:00 3-2 American Experience**
"George H.W. Bush" Pt. 1
3-1 *Last Twins*
3-3 *Baking with Julia*

SATURDAYS

- 1:00 am Classic Arts Showcase (5 hrs.)
- 6:00 am Papa Ray's Vintage Vinyl Records
- 6:30 am Texas Parks & Wildlife
- 7:00 am Texas Monthly Presents: The Story
- 7:30 am Cook's Country
- 8:00 am America's Test Kitchen
- 8:30 am Lucky Chow
- 9:00 am Milk Street
- 9:30 am Motorweek
- 10:00 am Garden Smart
- 10:30 am J. Schwanke's Life in Bloom
- 11:00 am Joy of Painting with Nicolas Hankins (ends 6th)
Eric En Plein Air (begins 13th)
- 11:30 am Joy of Painting
- 12:00 pm Painting and Travel
- 12:30 pm Quilt in a Day
- 1:00 pm Quilting Arts
- 1:30 pm Fons & Porter's Love of Quilting
- 2:00 pm Creative Living
- 2:30 pm Jazzy Vegetarian
- 3:00 pm Indian as Apple Pie
- 3:30 pm This Old House
- 4:00 pm Ask This Old House
- 4:30 pm Welcome to My Studio
- 5:00 pm Sewing with Nancy
- 5:30 pm Fit 2 Stitch

- 9:30 3-3 *Ask This Old House*
- 10:00 3-3 *American Woodshop*
- 10:30 3-1 *Amanpour and Company*
3-3 *Woodsmith Shop*
- 11:00 3-2 Reflections of a Colored Girl**
3-3 *Joy of Painting*
- 11:30 3-2 Juneteenth Jamboree**
"From a Free Place to Displace"
3-1 *PBS News Hour*
3-3 *Painting and Travel*
- 12:00 3-2 PBS News Hour**
3-3 *Painting with Wilson Bickford*

Saturday 20th

- 6:00 3-2 Report from Santa Fe**
3-1 *Antiques Roadshow* "Crystal Bridges Museum of American Art"
- 6:30 3-2 America's Heartland**
- 7:00 3-2 Lawrence Welk Show "Top Songs from Broadway Musicals"**
3-1 *Becoming Katharine Graham*
- 8:00 3-2 Curious Traveler "Curious Gdansk"**
- 8:30 3-2 Red Green Show "Splinter Lodge"**
- 9:00 3-2 Austin City Limits "Kacey Musgraves"**
3-1 *Texas Monthly Presents: The Story*
"Change Makers"
3-3 *Lawrence Welk Show*
- 9:30 3-1 *Bands of Enchantment*
"Arrested Development"
- 10:00 3-2 Nova "Secrets of the Forest"**
3-1 *Austin City Limits* "Kacey Musgraves"
3-3 *Classic Gospel*
- 11:00 3-2 Nature "Wildheart"**
3-1 *Nova* "Secrets of the Forest"
3-3 *Woodsongs*
- 12:00 3-2 Austin City Limits "Kacey Musgraves"**
3-1 *Nature* "Wildheart"
3-3 *Song of the Mountains*

SUNDAYS

- 1:00 am Classic Arts Showcase (5 hrs.)
- 6:00 am Painting and Travel
- 6:30 am Samantha Brown Places to Love
- 7:00 am Antiques Roadshow
- 8:00 am Classic Gospel
- 9:00 am Joy of Music
- 9:30 am Music and the Spoken Word
- 10:00 am Social Security: 90 Years Strong (7th)
Craft in America (14th)
Curious Worlds: The Art & Imagination (21st)
Eating History (28th)
- 10:30 am Attenborough's Greatest Adventure (7th)
- 11:00 am New Mexico in Focus (except 7th)
- 12:00 pm Highwaymen Live at Nassau Coliseum (7th)
Pati's Mexican Table (21st)
Cultura (14th & 28th)
- 12:30 pm Texas Parks & Wildlife (except 7th)
- 1:00 pm Texas Monthly Present
- 1:30 pm Closer to Truth's Global Philosophy of Religion
- 2:00 pm King Who Fooled Hitler (7th)
Wired for Connection (14th)
Facing the Wind (21st)
Friends & Neighbors:
Stories of Hope and Healing (28th)
- 3:00 pm Medical Stories
- 3:30 pm Medical Frontiers
- 4:00 pm Classic Gospel
- 5:00 pm You Should Know
- 5:30 pm Museum Access

Sunday 21st

- 6:00 3-2 Iconic America "Hollywood Sign"**
3-1 *Patience* "Music in the Minster" Pt. 2
- 7:00 3-2 Patience "Music in the Minster" Pt. 2**
3-1 *Masterpiece* "Grantchester" Pt. 2
- 8:00 3-2 Masterpiece "Grantchester" Pt. 2**
3-1 *Masterpiece* "Downton Abbey" Pt. 2
- 9:00 3-2 Masterpiece "Downton Abbey" Pt. 2**
3-1 *Friends & Neighbors:*
Stories of Hope & Healing
3-3 *Antiques Roadshow*
- 10:00 3-2 No Greater Act: Pueblo Resistance**
3-1 *Rick Steves' Europe* "Iceland's Reykjavik and the Golden Circle"
3-3 *This Old House*
- 10:30 3-1 *Bands of Enchantment* "Max Gomez"
3-3 *Ask This Old House*
- 11:00 3-2 Finding Your Roots**
"Wiz Khalifa/Sanaa Lathan"
3-1 *We'll Meet Again*
"Surviving the Holocaust" Pt. 2
3-3 *Motorweek*
- 11:30 3-3 *Texas Parks and Wildlife*
- 12:00 3-2 Nova "Secrets of the Forest"**
3-1 *Patience* "Music in the Minster" Pt. 2
3-3 *America's Heartland*

Monday 22nd

- 6:00 3-2 PBS News Hour**
3-1 *PBS News Hour*
- 7:00 3-2 Antiques Roadshow "Crystal Bridges Museum of American Art"**
3-1 *American Experience*
"George H.W. Bush" Pt. 1

3-1 Daytime

MONDAYS

- 1:00 am Classic Arts Showcase (4 hrs.)
- 5:00 am Classical Stretch
- 5:30 am Happy Yoga
- 6:00 am New Mexico in Focus
- 7:00 am Burt Wolf: Travels & Traditions
- 7:30 am Curious Traveler
- 8:00 am Rick Steves' Europe
- 8:30 am Jacques Pepin: Heart & Soul
- 9:00 am Pati's Mexican Table
- 9:30 am Kevin Belton's New Orleans
- 10:00 am Central Texas Gardener
- 10:30 am Jazzy Vegetarian
- 11:00 am Classical Stretch
- 11:30 am Sit and Be Fit
- 12:00 pm Maragret: The Rebel Princess Pt. 1 (1st)
Victoria & Albert Pt. 1 (8th)
Patience Pts. 1-3 (begins 13th)
- 1:00 pm Maragret: The Rebel Princess Pt. 2 (1st)
Victoria & Albert Pt. 2 (8th)
Masterpiece "Grantchester" Pts. 1-3
(begins 15th)
- 2:00 pm Masterpiece "Downton Abbey" (1st)
- 3:00 pm Travels with Darley (22nd)
- 3:30 pm Today's Wild West
Museum Access (8th)
- 4:00 pm America's Heartland
- 4:30 pm Daytripper
- 5:00 pm Texas Parks and Wildlife
- 5:30 pm BBC World News America

TUESDAYS

- 1:00 am Classic Arts Showcase (4 hrs.)
- 5:00 am Classical Stretch
- 5:30 am Happy Yoga
- 6:00 am Antiques Roadshow
- 7:00 am Savers of Flavors
Kitchen Curious (begins 16th)
- 7:30 am Travel Detective
- 8:00 am Closer to Truth
- 8:30 am Healthy Minds
- 9:00 am School of Greatness
- 9:30 am Mama Said, Mama Said
Recipe for Wellness (begins 9th)
- 10:00 am Wider World
- 10:30 am Healthful Indian Flavors
- 11:00 am Classical Stretch
- 11:30 am Happy Yoga
- 12:00 pm Christina Cooks
- 12:30 pm Life of Loi
- 1:00 pm Welcome to My Farm
- 1:30 pm Taste of History
- 2:00 pm Antiques Roadshow
- 3:00 pm Antiques Roadshow
- 4:00 pm Consuelo Mack WealthTrack
- 4:30 pm Start Up (except 30th)
- 5:00 pm Firing Line
- 5:30 pm BBC World News America

WEDNESDAYS

- 1:00 am Classic Arts Showcase (4 hrs.)
- 5:00 am Classical Stretch
- 5:30 am Happy Yoga
- 6:00 am By the River
Books By the River (begins 17th)
- 6:30 am Start Up
- 7:00 am Travels with Darley
- 7:30 am Museum Access
- 8:00 am This Old House
- 8:30 am Ask This Old House
- 9:00 am Welcome to My Farm
- 9:30 am J. Schwanke's Life in Bloom
- 10:00 am American Woodshop
- 10:30 am Woodsmith Shop
- 11:00 am Classical Stretch
- 11:30 am Sit and Be Fit
- 12:00 pm Sara's Weeknight Meals
- 12:30 pm Cook's Country
- 1:00 pm Steven Raichlen's Project Fire
- 1:30 pm Tim Farmer's Country Kitchen
- 2:00 pm Great American Recipe
- 3:00 pm Finding Your Roots
- 4:00 pm Lidia's Kitchen
- 4:30 pm America's Test Kitchen
- 5:00 pm Story in the Public Square
- 5:30 pm BBC World News America

THURSDAYS

- 1:00 am Classic Arts Showcase (4 hrs.)
- 5:00 am Classical Stretch
- 5:30 am Happy Yoga
- 6:00 am Story in the Public Square
- 6:30 am Canada Files
Overheard with Evan Smith (begins 11th)
- 7:00 am Texas Parks & Wildlife
- 7:30 am America the Bountiful
- 8:00 am Les Stroud's Wild Harvest
- 8:30 am Taste of History
- 9:00 am Fons & Porters Love of Quilting
- 9:30 am Quilting Arts
- 10:00 am Quilt in a Day
- 10:30 am Fit 2 Stitch
- 11:00 am Classical Stretch
- 11:30 am Happy Yoga
- 12:00 pm Milk Street
- 12:30 pm Lucky Chow
- 1:00 pm Moveable Feast
Son of a Butcher (begins 25th)
- 1:30 pm Jacques Pepin: Heart & Soul
- 2:00 pm Nature
- 3:00 pm Secrets of the Dead
The Kimberley: Australia's Wild West
(begins 18th)
- 4:00 pm Nova
- 5:00 pm You Should Know (4th only)
Texas Monthly Presents
- 5:30 pm BBC World News America

FRIDAYS

- 1:00 am Classic Arts Showcase (4 hrs.)
- 5:00 am Classical Stretch
- 5:30 am Yoga in Practice
- 6:00 am America's Heartland
- 6:30 am Garden Smart
- 7:00 am Song of the Mountains
- 8:00 am Life of a Musician
- 8:30 am Woodsongs Kids
- 9:00 am Radio Bristol's Farm and Fun Time
- 10:00 am Joy of Painting
- 10:30 am Painting and Travel
- 11:00 am Classical Stretch
- 11:30 am Sit and Be Fit
- 12:00 pm This Old House
- 12:30 pm Ask This Old House
- 1:00 pm Radical Restoration
- 1:30 pm Sewing with Nancy
- 2:00 pm Chef's Life
- 2:30 pm Weekends with Yankee
- 3:00 pm Samantha Brown's Places to Love
- 3:30 pm Savers of Flavors
Kitchen Curious (begins 12th)
- 4:00 pm American Muslims: A History Revealed
Generations: California @250
(begins 19th)
- 4:30 pm Gzero World with Ian Bremmer
- 5:00 pm Balancing Act with John Katko
- 5:30 pm BBC World News America

SATURDAYS

- 11:00 am Kevin Belton's New Orleans
- 11:30 am Pati's Mexican Table
- 12:00 pm This Old House
- 12:30 pm This Old House
- 1:00 pm Ask This Old House
- 1:30 pm Motorweek
- 2:00 pm Painting with Wilson
- 2:30 pm Steven Raichlen's Planet BBQ
- 3:00 pm America's Test Kitchen
- 3:00 pm Cook's Country
- 4:00 pm Nature
- 5:00 pm Horizons from PBS News
- 5:30 pm Report from Santa Fe

SUNDAYS

- 10:30 am Antiques Roadshow (7th)
Washington Week (14th)
- 11:00 am Washington Week
- 11:30 am Making of a Million: (21st)
Cultura (14th & 28th)
- 12:00 pm Celebrating America 250 (7th)
New Mexico in Focus
- 1:00 pm Consuelo Mack Wealthtrack
- 1:30 pm Market to Market
- 2:00 pm Garden Smart
- 2:30 pm J. Schwanke Life in Bloom
- 3:00 pm Craft in America
Curious Worlds: The Art & Imagination
(21st)
Eating History (28th)
- 4:00 pm Why Dinosaurs (7th)
Nova (Returns 14th)
- 5:00 pm Compass Points from PBS News
- 5:30 pm Closer to Truth



Our KENW Supporters

Please join us in thanking and supporting these businesses and organizations that help make our programming possible.

In Support of KENW-TV

Anderson Bethany Funeral Home and Crematory, Roswell	James Polk Stone Community Bank Clovis, Eunice, Hagerman, Hobbs, Portales, Roswell, Carlsbad
Chaves County Farm and Livestock Bureau, Dexter and Roswell	Kiwanis Club of Portales
Clovis Community College Cultural Arts Series	Living Desert Zoo & Gardens State Park, Carlsbad
Eastern New Mexico News, Clovis and Portales	New Mexico Department of Agriculture Plateau, Clovis
Eastern New Mexico University, Portales	Roosevelt County Electric Cooperative
Farmers' Electric Cooperative, Inc. of NM, Clovis	Security State Bank, Farwell, TX
Friends of the Living Desert, Carlsbad	Valley Mower Clinic, Inc., Clovis
	Yucca, Portales

In Support of KENW-FM

American AgCredit	Loka Creative
Border Soil & Water District	Mental Health Resources Inc.
City of Carlsbad	New Mexico Arts
Dairy Farmers of America	NM Economic Development
First Christian Church (Disciples of Christ), Carlsbad	NM Health Care Authority
JF Maddox Foundation	Roosevelt Soil & Water District
LifeHouse of Carlsbad	Taco Box, Clovis and Portales

Call Joshua Gonzalez for TV or Evelyn Ledbetter for FM at 575 562-2112 to add your support.

Thank You for Your Support!

8:00 3-2 **Antiques Roadshow**
"Springs Preserve"
9:00 3-2 **Independent Lens "Assembly"**
3-1 *Antiques Roadshow "Crystal Bridges Museum of American Art"*
3-3 *Baking with Julia*
9:30 3-3 *Ask This Old House*
10:00 3-2 **School of Greatness "Keys to Success, Health, & Connection"**
3-1 *Amanpour and Company*
3-3 *Patience "Music in the Minster" Pt. 2*
10:30 3-2 **Texas Parks and Wildlife**
11:00 3-2 **Antiques Roadshow "Crystal Bridges Museum of American Art"**
3-1 *PBS News Hour*
3-3 *Masterpiece "Grantchester" Pt. 2*
12:00 3-2 **PBS News Hour**
3-1 *Independent Lens "Assembly"*
3-3 *Masterpiece "Downton Abbey" Pt. 2*

Tuesday 23rd

6:00 3-2 **PBS News Hour**
3-1 *PBS News Hour*
7:00 3-2 **Finding Your Roots "Kristen Bell/Dax Shepard"**
3-1 *Lucy Worsley Investigates: The American Revolution Pt. 1*
8:00 3-2 **Lucy Worsley Investigates: The American Revolution Pt. 1**
3-1 *Becoming American: Philadelphia's Story*
9:00 3-2 **Frontline "Baby Brokers"**
3-1 *Finding Your Roots "Kristen Bell/Dax Shepard"*
3-3 *Baking with Julia*
9:30 3-3 *Ask This Old House*
10:00 3-2 **Becoming American: Philadelphia's Story**
3-1 *Amanpour and Company*
3-3 *Antiques Roadshow*
11:00 3-2 **Amanpour and Company**
3-1 *PBS News Hour*
3-3 *Antiques Roadshow*
12:00 3-2 **PBS News Hour**
3-1 *Frontline "Baby Brokers"*
3-3 *Becoming American: Philadelphia's Story*

Wednesday 24th

6:00 3-2 **PBS News Hour**
3-1 *PBS News Hour*
7:00 3-2 **Nature "American Horses"**
3-1 *No Greater Act: Pueblo Resistance*
8:00 3-2 **Nova "Ancient Desert Death Trap"**
3-1 *The Kimberley: Australia's Wild West "Tidal Territory" Pt. 2*
9:00 3-2 **The Kimberley: Australia's Wild West "Tidal Territory" Pt. 2**
3-1 *Nature "American Horses"*
3-3 *Baking with Julia*
9:30 3-3 *Ask This Old House*
10:00 3-2 **Medical Frontiers**
3-1 *Amanpour and Company*
3-3 *Finding Your Roots*
10:30 3-2 **This Old House**
11:00 3-2 **Amanpour and Company**
3-1 *PBS News Hour*
3-3 *Lucy Worsley Investigates: The American Revolution*
12:00 3-2 **PBS News Hour**
3-1 *Nova "Ancient Desert Death Trap"*
3-3 *No Greater Act: Pueblo Resistance*

Thursday 25th

6:00 3-2 **PBS News Hour**
3-1 *PBS News Hour*
7:00 3-2 **Frontline "Baby Brokers"**
3-1 *Radio Bristol's Pt. 2*

8:00 3-2 **Radio Bristol's Pt. 2**
3-1 *Wheels of Yesteryear: Touring with the Tin Lizzies*
8:30 3-1 *You Should Know*
9:00 3-2 **You Should Know**
3-1 *Armadillo Man: The Trips of Jim Franklin*
3-3 *Baking with Julia*
9:30 3-2 **Wheels of Yesteryear: Touring with the Tin Lizzies**
3-1 *Reflections of a Colored Girl*
3-3 *Ask This Old House*
10:00 3-2 **Live from the Old Steeple**
3-1 *Amanpour and Company*
3-3 *Nature*
11:00 3-2 **Amanpour and Company**
3-1 *PBS News Hour*
3-3 *Nova*
12:00 3-2 **PBS News Hour**
3-1 *Laura Flanders & Friends*
3-3 *The Kimberley: Australia's Wild West*

Friday 26th

6:00 3-2 **PBS News Hour**
3-1 *PBS News Hour*
7:00 3-2 **Market to Market**
3-1 *Firing Line*
7:30 3-2 **Consuelo Mack Wealthtrack**
8:00 3-2 **Firing Line**
3-1 *Nova "Ancient Desert Death Trap"*
9:00 3-2 **American Experience "George H.W. Bush" Pt. 2**
3-1 *Frontline "Baby Brokers"*
3-3 *Baking with Julia*

9:30 3-3 *Ask This Old House*
10:00 3-1 *Amanpour and Company*
3-3 *American Woodshop*
10:30 3-2 **American Revolution: An Inside Look**
3-3 *Woodsmith Shop*
11:00 3-2 **Curious Worlds: The Art & Imagination of David Beck**
3-1 *PBS News Hour*
3-3 *Joy of Painting*
11:30 3-3 *Painting and Travel*
12:00 3-2 **PBS News Hour**
3-1 *Balancing Act with John Katko*
3-3 *Painting with Wilson Bickford*

Saturday 27th

6:00 3-2 **Report from Santa Fe**
3-1 *Antiques Roadshow "Crystal Bridges Museum of American Art"*
6:30 3-2 **America's Heartland**
7:00 3-2 **Lawrence Welk Show "America at Play"**
3-1 *Eliades Ochoa: From Cuba to the World*
8:00 3-2 **Curious Traveler "Curious Antarctica"**
3-1 *Buskers New York*
8:30 3-2 **Red Green Show "Good Old Hockey Game"**
9:00 3-2 **Austin City Limits "Juanes"**
3-1 *Texas Monthly Presents: The Story "Taking Matters into Your Own Hands"*
3-3 *Lawrence Welk Show*
9:30 3-1 *Bands of Enchantment "Max Gomez"*

PBS KIDS

Channel 3-2

WEEKDAYS

7:00 am	Lyla in the Loop
7:30 am	Carl the Collector
8:00 am	Daniel Tiger's Neighborhood
8:30 am	Phoebe & Jay
9:00 am	Sesame Street
9:30 am	Work It Out Wombats!
10:00 am	Donkey Hodie
10:30 am	Rosie's Rules
11:00 am	Skillsville (F)
11:30 am	Mister Rogers (F)
1:00 pm	Elinor Wonders Why
1:30 pm	Alma's Way
2:00 pm	Molly of Denali
2:30 pm	Weather Hunters
3:00 pm	Wild Kratts
3:30 pm	Arthur
4:00 pm	Odd Squad



SKILLSVILLE is an animated show for kids, ages 4-8, that teaches simple strategies to enhance the performance of Executive Functioning skills through the genre of video games, and helps align interests to future career possibilities.

Fridays 11am (3-2)

Saturdays 12pm beginning 13th (3-3)

Sundays 12pm (3-3)

Channel 3-3

WEEKDAYS

4:00 am	Arthur
4:30 am	Odd Squad
5:00 am	Wild Kratts
5:30 am	Weather Hunters
6:00 am	Lyla in the Loop
6:30 am	Carl the Collector
7:00 am	Daniel Tiger's Neighborhood
7:30 am	Phoebe & Jay
8:00 am	Sesame Street
8:30 am	Work It Out Wombats!
9:00 am	Donkey Hodie
9:30 am	Rosie's Rules
10:00 am	Elinor Wonders Why
10:30 am	Alma's Way
11:00 am	Molly of Denali
11:30 am	Xavier Riddle & the Secret Museum
12:00 pm	Arthur
12:30 pm	Odd Squad
1:00 pm	Wild Kratts
1:30 pm	Weather Hunters
2:00 pm	Lyla in the Loop
2:30 pm	Carl the Collector
3:00 pm	Daniel Tiger's Neighborhood
3:30 pm	Phoebe & Jay
4:00 pm	Sesame Street
4:30 pm	Work It Out Wombats!
5:00 pm	Donkey Hodie
5:30 pm	Rosie's Rules
6:00 pm	Elinor Wonders Why
6:30 pm	Alma's Way
7:00 pm	Molly of Denali
7:30 pm	Weather Hunters
8:00 pm	Arthur
8:30 pm	Odd Squad

SATURDAYS

4:00 am	Mister Rogers
4:30 am	Arthur
5:00 am	Wild Kratts
5:30 am	Weather Hunters
6:00 am	Lyla in the Loop
6:30 am	Carl the Collector
7:00 am	Daniel Tiger's Neighborhood
7:30 am	Phoebe & Jay
8:00 am	Sesame Street
8:30 am	Work It Out Wombats!
9:00 am	Donkey Hodie
9:30 am	Rosie's Rules
10:00 am	Elinor Wonders Why
10:30 am	Cyberchase
11:00 am	Curious Crew
11:30 am	Mia & Codie/Vegesaurs
12:00 pm	Skillsville
12:30 pm	Mister Rogers
1:00 pm	Arthur
1:30 pm	Weather Hunters
2:00 pm	Alma's Way
2:30 pm	Lyla in the Loop
3:00 pm	Carl the Collector
3:30 pm	Daniel Tiger's Neighborhood
4:00 pm	Phoebe & Jay
4:30 pm	Sesame Street
5:00 pm	Work It Out Wombats!
5:30 pm	Donkey Hodie
6:00 pm	Rosie's Rules
6:30 pm	Alma's Way
7:00 pm	Cyberchase
7:30 pm	Wild Kratts
8:00 pm	Arthur
8:30 pm	Mister Rogers

SUNDAYS

4:00 am	Mister Rogers
4:30 am	Arthur
5:00 am	Wild Kratts
5:30 am	Weather Hunters
6:00 am	Lyla in the Loop
6:30 am	Wild Kratts
7:00 am	Daniel Tiger's Neighborhood
7:30 am	Phoebe & Jay
8:00 am	Sesame Street
8:30 am	Work It Out Wombats!
9:00 am	Donkey Hodie
9:30 am	Rosie's Rules
10:00 am	Elinor Wonders Why
10:30 am	Cyberchase
11:00 am	Curious Crew
11:30 am	Infinite Art Hunt
12:00 pm	Skillsville
12:30 pm	Mister Rogers
1:00 pm	Arthur
1:30 pm	Weather Hunters
2:00 pm	Alma's Way
2:30 pm	Lyla in the Loop
3:00 pm	Wild Kratts
3:30 pm	Daniel Tiger's Neighborhood
4:00 pm	Phoebe & Jay
4:30 pm	Sesame Street
5:00 pm	Work It Out Wombats!
5:30 pm	Donkey Hodie
6:00 pm	Rosie's Rules
6:30 pm	Alma's Way
7:00 pm	Cyberchase
7:30 pm	Wild Kratts
8:00 pm	Arthur
8:30 pm	Mister Rogers



Channel 3-1

SATURDAYS

5:00 am	Mister Rogers
5:30 am	Arthur
6:00 am	Wild Kratts
6:30 am	Weather Hunters
7:00 am	Lyla in the Loop
7:30 am	Carl the Collector
8:00 am	Daniel Tiger's Neighborhood
8:30 am	Phoebe & Jay
9:00 am	Sesame Street
9:30 am	Work It Out Wombats!
10:00 am	Donkey Hodie
10:30 am	Rosie's Rules

SUNDAYS

5:00 am	Mister Rogers
5:30 am	Arthur
6:00 am	Wild Kratts
6:30 am	Weather Hunters
7:00 am	Lyla in the Loop
7:30 am	Carl the Collector
8:00 am	Daniel Tiger's Neighborhood
8:30 am	Phoebe & Jay
9:00 am	Sesame Street
9:30 am	Work It Out Wombats!
10:00 am	Donkey Hodie
10:30 am	Rosie's Rules

KENW-FM Radio Week at-a-Glance

KENW-FM, Portales, NM, 89.5 MHz — KMTN-FM, Maljamar, NM, 98.7 MHz — KENM-FM, Tucumcari, NM, 88.9 MHz —
 KENU-FM, Des Moines, NM, 88.5 MHz — KENG-FM, Ruidoso, NM, 88.5 MHz — KENE-FM, Raton, NM, 88.1 MHz —
 KNMJ-FM, Eunice, NM, 100.9 MHz — KENY-FM, Wagon Mound, NM, 90.5 MHz —
 KENP-FM, Las Vegas, NM, 88.1 MHz — KENB-FM, Roswell, NM, 90.9 MHz

Translators: Apache Springs, 90.9 MHz; Clayton, 93.5 MHz; Des Moines, 106.1MHz; Ft. Sumner, 91.7MHz

	Sunday	Monday	Tuesday	Wednesday	Thursday	Friday	Saturday	Monday through Friday																					
5:00	Travel with Rick Steves	Morning Edition	Morning Edition	Morning Edition	Morning Edition	Morning Edition	5:00 a.m. People's Pharmacy	Weather: 5:18, 6:18, and 7:18 a.m. Regional News: 5:33, 6:33, and 7:33 a.m. 5:06 Innovation Now 5:42 The Post Perspective 5:49 Melinda's Garden Moment 6:06 Climate Connections 6:42 Science Update 6:49 90 Second Naturalist 7:06 Innovation Now 7:42 The Post Perspective 7:49 Melinda's Garden Moment 8:10 Marketplace Report 8:15 Animal Airwaves (MWF) Kindness Moment (Tu, Th) 8:20 All About Ag (M-Th) Travelers in the Night (W) Dumb Ideas that Changed the World (F) 8:30 Health in a Heartbeat 8:45 The Story of the Writing 9:00 Weather/News 9:15 Marketplace Tech Report 9:30 Disability Awareness 9:45 EarthDate 10:00 Weather/News/Regional News 10:15 Engines of Our Ingenuity 10:30 Composers' Datebook 10:45 Author's Corner 11:00 Weather/News 11:06 KENW Local News 11:15 Melinda's Garden Moment 11:30 The Plant Detective 11:45 Climate Connections 12:00 Weather/News/Regional News 12:30 Today in Rock & Roll History 12:35 Great Arts at Eastern (Th) 12:45 People's Pharmacy News (M) Poetry Now (T) Dumb Ideas (W) Medical Discoveries News (Th) Science and the Sea (F) 1:00 Weather/News 1:08 KENW Local News 1:06 Asian View 1:15 Sound Beat 1:20 A Southwest Spotlight (W) 1:30 Loh Down on Science 1:45 StarDate 2:00 Weather/News/Regional News 2:15 Bird Note 2:30 The American Storyteller 2:45 90 Second Naturalist/Innovation Now 4:20 Earthdate 4:33 Evening Regional News 4:50 Weather 5:20 The Plant Detective 5:33 Evening Regional News 5:50 Weather 6:57 StarDate/Weather 9:00 Weather/News 12:00 and 3:00 a.m. Weather/News																					
6:00	Weekend Edition						8:10 a.m. ENMU Weekly Calendar 8:20 a.m. Ag Segments		8:20 a.m. Ag Segments	8:10 a.m. ENMU Weekly Calendar 8:20 a.m. Ag Segments	8:20 a.m. Ag Segments	8:20 a.m. Ag Segments	6:00 a.m. Weekend Edition																
7:00													8:00 a.m. Planet Money & How I Built This																
8:00	With Heart and Voice	Music News & Features	Music News & Features	Music News & Features	Music News & Features	Music News & Features	9:00 a.m. Wait, Wait... Don't Tell Me																						
9:00	Footlight Parade						10:00 a.m. The Bioneers																						
10:00	Radiolab						10:30 a.m. You Should Know																						
11:00	Fresh Air Weekend with Terry Gross						3:00 p.m. Report from Santa Fe		Best of Knowledge	You Should Know	With Good Reason	2:30 p.m. A Way with Words	WFMT Radio Network Opera Radio Series																
12:00	People's Pharmacy (R)												Marketplace	Marketplace	Marketplace	Marketplace	Marketplace	2:30 p.m. Nothing Funny About Money (when length of opera permits)											
1:00	This American Life																	All Things Considered	All Things Considered	All Things Considered	All Things Considered	All Things Considered	3:00 p.m. Classical Guitar Alive						
2:00	Freakonomics																						PBS NewsHour	PBS NewsHour	PBS NewsHour	PBS NewsHour	PBS NewsHour	4:00 p.m. WoodSongs	
3:00	Mountain Stage							Chicago Symphony Orchestra																				New York Philharmonic	San Francisco Symphony
3:30							Performance Today		Performance Today	Performance Today	Performance Today	Performance Today																	
4:00													Classical Music Out of the Night until 5:00 a.m.	Classical Music Out of the Night until 5:00 a.m.	Classical Music Out of the Night until 5:00 a.m.	Classical Music Out of the Night until 5:00 a.m.	Classical Music Out of the Night until 5:00 a.m.												
4:30		Classical Music Out of the Night until 5:00 a.m.	Classical Music Out of the Night until 5:00 a.m.	Classical Music Out of the Night until 5:00 a.m.	Classical Music Out of the Night until 5:00 a.m.	Classical Music Out of the Night until 5:00 a.m.												Classical Music Out of the Night until 5:00 a.m.	Classical Music Out of the Night until 5:00 a.m.										
5:00																				Classical Music Out of the Night until 5:00 a.m.	Classical Music Out of the Night until 5:00 a.m.	Classical Music Out of the Night until 5:00 a.m.	Classical Music Out of the Night until 5:00 a.m.	Classical Music Out of the Night until 5:00 a.m.	Classical Music Out of the Night until 5:00 a.m.	Classical Music Out of the Night until 5:00 a.m.			
5:30	Classical Music Out of the Night until 5:00 a.m.							Classical Music Out of the Night until 5:00 a.m.																			Classical Music Out of the Night until 5:00 a.m.	Classical Music Out of the Night until 5:00 a.m.	Classical Music Out of the Night until 5:00 a.m.
6:00							Classical Music Out of the Night until 5:00 a.m.		Classical Music Out of the Night until 5:00 a.m.	Classical Music Out of the Night until 5:00 a.m.	Classical Music Out of the Night until 5:00 a.m.	Classical Music Out of the Night until 5:00 a.m.																	
7:00													Classical Music Out of the Night until 5:00 a.m.	Classical Music Out of the Night until 5:00 a.m.	Classical Music Out of the Night until 5:00 a.m.	Classical Music Out of the Night until 5:00 a.m.	Classical Music Out of the Night until 5:00 a.m.												
8:00		Classical Music Out of the Night until 5:00 a.m.	Classical Music Out of the Night until 5:00 a.m.	Classical Music Out of the Night until 5:00 a.m.	Classical Music Out of the Night until 5:00 a.m.	Classical Music Out of the Night until 5:00 a.m.												Classical Music Out of the Night until 5:00 a.m.	Classical Music Out of the Night until 5:00 a.m.										
9:00																				Classical Music Out of the Night until 5:00 a.m.	Classical Music Out of the Night until 5:00 a.m.	Classical Music Out of the Night until 5:00 a.m.	Classical Music Out of the Night until 5:00 a.m.	Classical Music Out of the Night until 5:00 a.m.	Classical Music Out of the Night until 5:00 a.m.	Classical Music Out of the Night until 5:00 a.m.			
10:00	Classical Music Out of the Night until 5:00 a.m.							Classical Music Out of the Night until 5:00 a.m.																			Classical Music Out of the Night until 5:00 a.m.	Classical Music Out of the Night until 5:00 a.m.	Classical Music Out of the Night until 5:00 a.m.
11:00							Classical Music Out of the Night until 5:00 a.m.		Classical Music Out of the Night until 5:00 a.m.	Classical Music Out of the Night until 5:00 a.m.	Classical Music Out of the Night until 5:00 a.m.	Classical Music Out of the Night until 5:00 a.m.																	

The Q2-3 Program Guide (Cue to 3) is published each month by the Broadcast Center, a non-profit public service division of Eastern New Mexico University.

The guide is available to friends contributing \$35 per year or more to the support of public broadcasting. Senior Citizen and Student memberships are available for \$25. All contributions are tax deductible. Donations should be made payable to Friends of KENW-TV or to Friends of KENW-FM.

Telephone: (575) 562-2112. Toll-free 1-888-FOR-KENW (367-5369).

Fax: (575) 562-2590

Mailing Address:
KENW-TV/FM

52 Broadcast Center, ENMU
1500 South Avenue K
Portales, NM 88130

Website: www.kenw.org

E-Mail: kenwtv@enmu.edu kenwfm@enmu.edu

Eastern New Mexico University is an affirmative action and equal opportunity employer. The University does not discriminate on the basis of race, color, national origin, religion, sex (including pregnancy, gender identity, and sexual orientation), age, disability, genetic information, veteran status, or any other protected status in its programs, activities, or employment. People seeking additional information about the University's non-discrimination policy should contact the Affirmative Action Officer at Station 9.

KENW-TV/FM
Eastern New Mexico
University

Opera News
Saturdays, 11:00 am
On FM Radio

The Metropolitan
Opera

June 6
The Bartered Bride
(Bedřich Smetana)

June 13
Fidelio
(Ludwig van Beethoven)

June 20
Lady Macbeth of Mtsensk
(Dmitri Shostakovich)

June 27
Ariodante
(George Frideric Handel)

- 10:00 3-2 Nova "Ancient Desert Death Trap"
3-1 Austin City Limits "Juanes"
3-3 Classic Gospel
- 11:00 3-2 Nature "American Horses"
3-1 Nova "Ancient Desert Death Trap"
3-3 Woodsongs
- 12:00 3-2 Austin City Limits "Juanes"
3-1 Nature "American Horses"
3-3 Song of the Mountains

Sunday 28th

- 6:00 3-2 Iconic America "Gadsden Flag"
3-1 Patience "The Magpie" Pt. 3
- 7:00 3-2 Patience "The Magpie" Pt. 3
3-1 Masterpiece "Grantchester" Pt. 3
- 8:00 3-2 Masterpiece "Grantchester"
Pt. 3
3-1 Masterpiece "Downton Abbey"
Pt. 3
- 9:00 3-2 Masterpiece "Downton Abbey"
Pt. 3
3-1 Independent Lens "Assembly"
3-3 Antiques Roadshow
- 10:00 3-2 Eliades Ochoa:
From Cuba to the World
3-1 Rick Steves' Europe
"Iceland's Ring Road"
3-3 This Old House
- 10:30 3-1 Bands of Enchantment "Lilly Hiatt"
3-3 Ask This Old House
- 11:00 3-2 Finding Your Roots
"Kristen Bell/Dax Shepard"
3-1 We'll Meet Again
"Great Alaskan Earthquake" Pt. 3
3-3 Motorweek
- 11:30 3-3 Texas Parks and Wildlife
- 12:00 3-2 Nova "Ancient Desert Death Trap"
3-1 Patience "The Magpie" Pt. 3
3-3 America's Heartland



Duane W. Ryan
(1932-2023)
Founding Director

Monday 29th

- 6:00 3-2 PBS News Hour
3-1 PBS News Hour
- 7:00 3-2 Antiques Roadshow
"250 Years of Americana"
3-1 American Experience
"George H.W. Bush" Pt. 2
- 8:00 3-2 Antiques Roadshow
"Springs Preserve"
- 8:30 3-1 American Revolution: An Inside Look
- 9:00 3-2 Declarations: Black Americans
and the Revolutionary War
3-1 Antiques Roadshow
"250 Years of Americana"
3-3 Baking with Julia
- 9:30 3-3 Ask This Old House
- 10:00 3-2 School of Greatness
"Michelle Obama & Craig Robinson"
3-1 Amanpour and Company
3-3 Patience "The Magpie" Pt. 3
- 10:30 3-2 Texas Parks and Wildlife
- 11:00 3-2 Antiques Roadshow
"250 Years of Americana"
3-1 PBS News Hour
3-3 Masterpiece "Grantchester" Pt. 3
- 12:00 3-2 PBS News Hour
3-1 Declarations: Black Americans
and the Revolutionary War
3-3 Masterpiece "Downton Abbey" Pt. 3

Tuesday 30th

- 6:00 3-2 PBS News Hour
3-1 PBS News Hour
- 7:00 3-2 Finding Your Roots
"Carol Burnett/Niecy Nash"
3-1 Lucy Worsley Investigates:
The American Revolution Pt. 2
- 8:00 3-2 Lucy Worsley Investigates:
The American Revolution Pt. 2
3-1 Declarations: Black Americans
and the Revolutionary War
- 9:00 3-2 Frontline
3-1 Finding Your Roots
"Carol Burnett/Niecy Nash"
3-3 Baking with Julia
- 9:30 3-3 Ask This Old House
- 10:00 3-2 Wired for Connection
3-1 Amanpour and Company
3-3 Antiques Roadshow
- 11:00 3-2 Amanpour and Company
3-1 PBS News Hour
3-3 Antiques Roadshow
- 12:00 3-2 PBS News Hour
3-1 Frontline
3-3 Ancient Skies

OUR KENW STAFF

BROADCAST CENTER

- Founding Director*
Duane W. Ryan
- Director of Broadcasting*
Porfirio Delgado
- Accountant*
Crystal Sawyer
- Engineering Director*
Porfirio Delgado
- Engineers*
Michael Chandler
John Bamforth

KENW-TV STAFF

- Administrative Assistant*
Karina Hernandez
- Development/Promotions Director, TV*
Joshua Gonzalez
- Editorial Assistant*
Wanda Newberry
- Master Control Operator, TV*
David Asplund
Doris Blandford
Wade Martin
Paige Gard
- Operations Director*
Justin Robertson
- Producer/Director, TV*
Allan Crawford
Pablito Herrera
- Programming Director*
Sean Moore

KENW-FM STAFF

- Administrative Assistant*
Suzanne West
- Audio Engineer*
Mickey Morgan
- Development/Promotions Director, FM*
Evelyn Ledbetter
- News and Public Affairs Director, FM*
Kevin L. Robbins
- Operations Assistant, FM*
Manny Martinez
- Operations Director, FM*
Shannon Hearn

ENMU

- President/System Chancellor*
Dr. James Johnston
- Vice President for Academic Affairs*
Dr. Jamie Laurenz
- Vice President for Advancement/PR*
Mr. Warren Lloyd
- Vice President for Student Affairs*
Dr. Christy Johanson
- Chief Financial Officer*
Mr. Tony Major
- Executive Director for System
Information Technology (EDSIT)*
Ms. Erin Morgan

ALL ABOUT AG



Monday-Thursday
Airing approximately at
8:20 AM
Produced by KENW FM

Sponsored By:





Before bringing home chicks, a little preparation can make a big difference. This month on All About Ag, KENW-FM highlights what anyone should know about raising baby chickens, ducks, and other poultry from setting up a warm brooder to choosing the right feed, bedding, water, and protection from predators. All About Ag is a KENW-FM feature focused on promoting agricultural literacy through clear, informative segments about agriculture, conservation, food production, and rural life. A special thank you to our partners, Roosevelt Soil & Water Conservation District, Border Soil & Water Conservation District, and American AgCredit, whose partnership and financial support make this feature possible.

**KENW FM 89.5 Radio:
Monday-Thursday 8:20am**

DR. JOHNSTON & EVELYN
EVERY MONDAY AND WEDNESDAY
AROUND 8:10 AM



ENMU WEEKLY CALENDAR

ENMU Weekly Calendar with Dr. Johnston keeps listeners informed about upcoming events, announcements, and activities taking place across Eastern New Mexico University. Hosted by ENMU President Dr. Johnston and Evelyn, the program offers a convenient weekly snapshot of campus life and opportunities for students, faculty, staff, and the broader community.

**KENW FM 89.5 Radio:
Mondays & Wednesdays 8:10am**

KENW-FM's Summer Pledge Drive

June 22-28, 2026




Your support is needed now!

KENW-FM depends on your contributions to keep trusted programming on the air. 100% of every pledge you make goes toward the cost of our programming.

**Make your pledge today
by calling 1-888-367-5369 or online 24/7 at KENW.ORG.
Select "Pledge," choose "KENW-FM," and click "Pledge to Radio Now."**