



## IOWA

### SUMMARY

- Iowa is in the red zone for cases, indicating 101 or more new cases per 100,000 population last week, with the 7th highest rate in the country. Iowa is in the orange zone for test positivity, indicating a rate between 8.0% and 10.0%, with the 11th highest rate in the country.
- Iowa has seen stability in new cases and an increase in test positivity over the last week.
- The following three counties had the highest number of new cases over the last 3 weeks: 1. Polk County, 2. Woodbury County, and 3. Dubuque County. These counties represent 24.0% of new cases in Iowa.
- 82% of all counties in Iowa have moderate or high levels of community transmission (yellow, orange, or red zones), with 38% having high levels of community transmission (red zone).
- During the week of Sep 28 - Oct 4, 10% of nursing homes had at least one new resident COVID-19 case, 25% had at least one new staff COVID-19 case, and 3% had at least one new resident COVID-19 death.
- Iowa had 199 new cases per 100,000 population in the last week, compared to a national average of 100 per 100,000.
- Between Oct 3 - Oct 9, on average, 70 patients with confirmed COVID-19 and 32 patients with suspected COVID-19 were reported as newly admitted each day to hospitals in Iowa. An average of greater than 95% of hospitals reported either new confirmed or new suspected COVID patients each day during this period.

### RECOMMENDATIONS

- We have included cases, test positivity, and deaths by month in the back of your packet to show the time sequence in Iowa and the country as a whole. These demonstrate the impact of comprehensive mitigation efforts when implemented effectively and that partial or incomplete mitigation leads to prolonged community spread and increased fatalities.
- Community spread continues in both rural and urban areas of Iowa and it is critical that mitigation efforts increase to include mask wearing, physical distancing, hand hygiene, and avoiding crowds in public and social gatherings in private to stop the increasing spread among residents. Retail establishments can enforce mitigation efforts in all public spaces and set the expectation for all Iowans to do their part to stop the spread, including getting a flu shot.
- There continue to be severe outbreaks among nursing home residents and staff; common sense mitigation efforts can prevent transmission among the vulnerable populations.
- With the rise in cases among individuals 65 years and older, provide information through senior citizen networks to alert them to take precautionary measures.
- Use the Abbott BinaxNOW for surveillance testing in the same populations weekly. This will provide information on local transmission changes. Establish and deploy targeted testing teams (not drive-through testing) who can be rapidly deployed to communities based on signals from surveillance testing. Populations for surveillance can include K-12 teachers, fire and police force, nursing home and correctional facility staff.
- Antivirals and antibodies have the most impact when used early in hospital admissions (within 48 hours). Ensure hospitals are effectively administering these medications to prevent morbidity and mortality.
- Work with university students to keep cases low, with the goal of low transmission in preparation for Thanksgiving. Implement antibody testing to understand fraction of students who have been infected and plan for spring semester accordingly. Test all university students before dismissing them for Thanksgiving.
- Tribal Nations: Increase testing, continue to expand culturally-specific public health education, developed with community leaders, especially as tribal social events pick back up. Conduct prompt contact tracing on all cases and provide housing and supplies to support immediate quarantine of contacts and isolation of cases.
- Specific, detailed guidance on community mitigation measures can be found on the [CDC website](#).



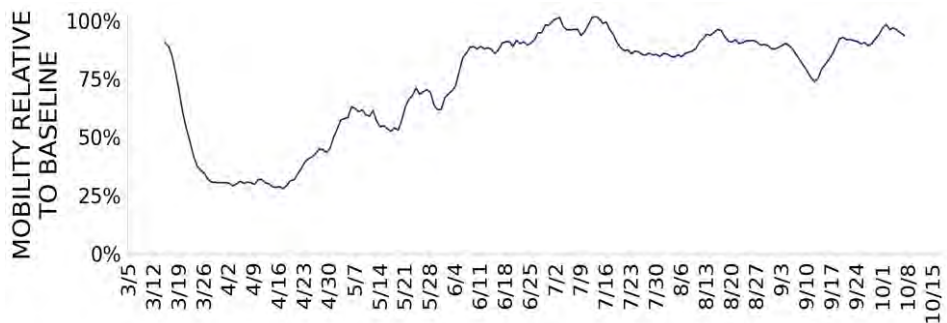


# IOWA

STATE REPORT | 10.11.2020

	STATE, LAST WEEK	STATE, % CHANGE FROM PREVIOUS WEEK	FEMA/HHS REGION, LAST WEEK	UNITED STATES, LAST WEEK
NEW COVID-19 CASES (RATE PER 100,000)	6,291 (199)	+0%	23,915 (169)	327,190 (100)
VIRAL (RT-PCR) LAB TEST POSITIVITY RATE	8.4%	+0.6%*	9.6%	5.8%
TOTAL VIRAL (RT-PCR) LAB TESTS (TESTS PER 100,000)	76,908** (2,438)	-7%**	235,283** (1,664)	6,936,223** (2,113)
COVID-19 DEATHS (RATE PER 100,000)	66 (2.1)	+3%	403 (2.9)	4,908 (1.5)
SNFs WITH ≥1 NEW RESIDENT COVID-19 CASE (≥1 NEW STAFF CASE)	10% (25%)	-1%* (-3%*)	13% (29%)	10% (21%)
SNFs WITH ≥1 NEW RESIDENT COVID-19 DEATH	3%	-2%*	4%	4%

## MOBILITY



\* Indicates absolute change in percentage points.

\*\* Due to delayed reporting, this figure may underestimate total diagnostic tests and week-on-week changes in diagnostic tests.

**DATA SOURCES** – Additional data details available under METHODS

**Note:** Some dates may have incomplete data due to delays in reporting. Data may be backfilled over time, resulting in week-to-week changes.

**Cases and Deaths:** State values are calculated by aggregating county-level data from USAFacts; therefore, the values may not match those reported directly by the state. Data is through 10/9/2020; last week is 10/3 - 10/9, previous week is 9/26 - 10/2.

**Testing:** CELR (COVID-19 Electronic Lab Reporting) state health department-reported data through 10/7/2020. Last week is 10/1 - 10/7, previous week is 9/24 - 9/30.

**Mobility:** Descartes Labs. This data depicts the median distance moved across a collection of mobile devices to estimate the level of human mobility within a county. The 100% represents the baseline mobility level prior to the pandemic; lower percent mobility indicates less population movement. Data is anonymized and provided at the county level. Data through 10/7/2020.

**SNFs:** Skilled nursing facilities. National Healthcare Safety Network. Data are reported separately for cases among residents and staff. Last week is 9/28-10/4, previous week is 9/21-9/27.



# IOWA

STATE REPORT | 10.11.2020

## COVID-19 COUNTY AND METRO ALERTS\*

Top 12 shown in table (full lists below)

### METRO AREA (CBSA) LAST WEEK

### COUNTY LAST WEEK

LOCALITIES  
IN RED  
ZONE

8

▲ (+2)

Sioux City  
Dubuque  
Omaha-Council Bluffs  
Carroll  
Storm Lake  
Pella  
Spirit Lake  
Spencer

38

▲ (+8)

Woodbury  
Dubuque  
Sioux  
Pottawattamie  
Plymouth  
Delaware  
Harrison  
Carroll  
Lyon  
Crawford  
O'Brien  
Buena Vista

LOCALITIES  
IN ORANGE  
ZONE

3

■ (+0)

Burlington  
Oskaloosa  
Fairfield

15

▲ (+2)

Henry  
Des Moines  
Jasper  
Mahaska  
Winnebago  
Jones  
Mills  
Cass  
Hardin  
Union  
Montgomery  
Decatur

LOCALITIES  
IN YELLOW  
ZONE

10

▲ (+1)

Des Moines-West Des Moines  
Cedar Rapids  
Davenport-Moline-Rock Island  
Waterloo-Cedar Falls  
Ames  
Clinton  
Ottumwa  
Fort Madison-Keokuk  
Muscatine  
Marshalltown

28

▲ (+2)

Polk  
Linn  
Scott  
Black Hawk  
Story  
Dallas  
Clinton  
Wapello  
Lee  
Kossuth  
Muscatine  
Washington

Change from previous week's alerts:

▲ Increase

■ Stable

▼ Decrease

**All Red Counties:** Woodbury, Dubuque, Sioux, Pottawattamie, Plymouth, Harrison, Delaware, Carroll, Lyon, Crawford, O'Brien, Buena Vista, Tama, Jackson, Marion, Dickinson, Cherokee, Boone, Clay, Sac, Iowa, Guthrie, Chickasaw, Emmet, Wright, Madison, Osceola, Fremont, Taylor, Ida, Calhoun, Monona, Audubon, Grundy, Butler, Appanoose, Monroe, Adams

**All Orange Counties:** Henry, Des Moines, Jasper, Mahaska, Winnebago, Jones, Mills, Cass, Hardin, Union, Montgomery, Decatur, Jefferson, Howard, Clarke

**All Yellow Counties:** Polk, Linn, Scott, Black Hawk, Story, Dallas, Clinton, Wapello, Lee, Kossuth, Muscatine, Washington, Page, Benton, Buchanan, Floyd, Marshall, Palo Alto, Bremer, Clayton, Cedar, Hancock, Greene, Hamilton, Allamakee, Pocahontas, Van Buren, Adair

\* Localities with fewer than 10 cases last week have been excluded from these alerts.

**Note:** Lists of red, orange, and yellow localities are sorted by the number of new cases in the last 3 weeks, from highest to lowest. Some dates may have incomplete data due to delays in reporting. Data may be backfilled over time, resulting in week-to-week changes.

**DATA SOURCES** – Additional data details available under METHODS

**Cases and Deaths:** State values are calculated by aggregating county-level data from USAFacts; therefore, the values may not match those reported directly by the state. Data is through 10/9/2020; last week is 10/3 - 10/9, three weeks is 9/19 - 10/9.

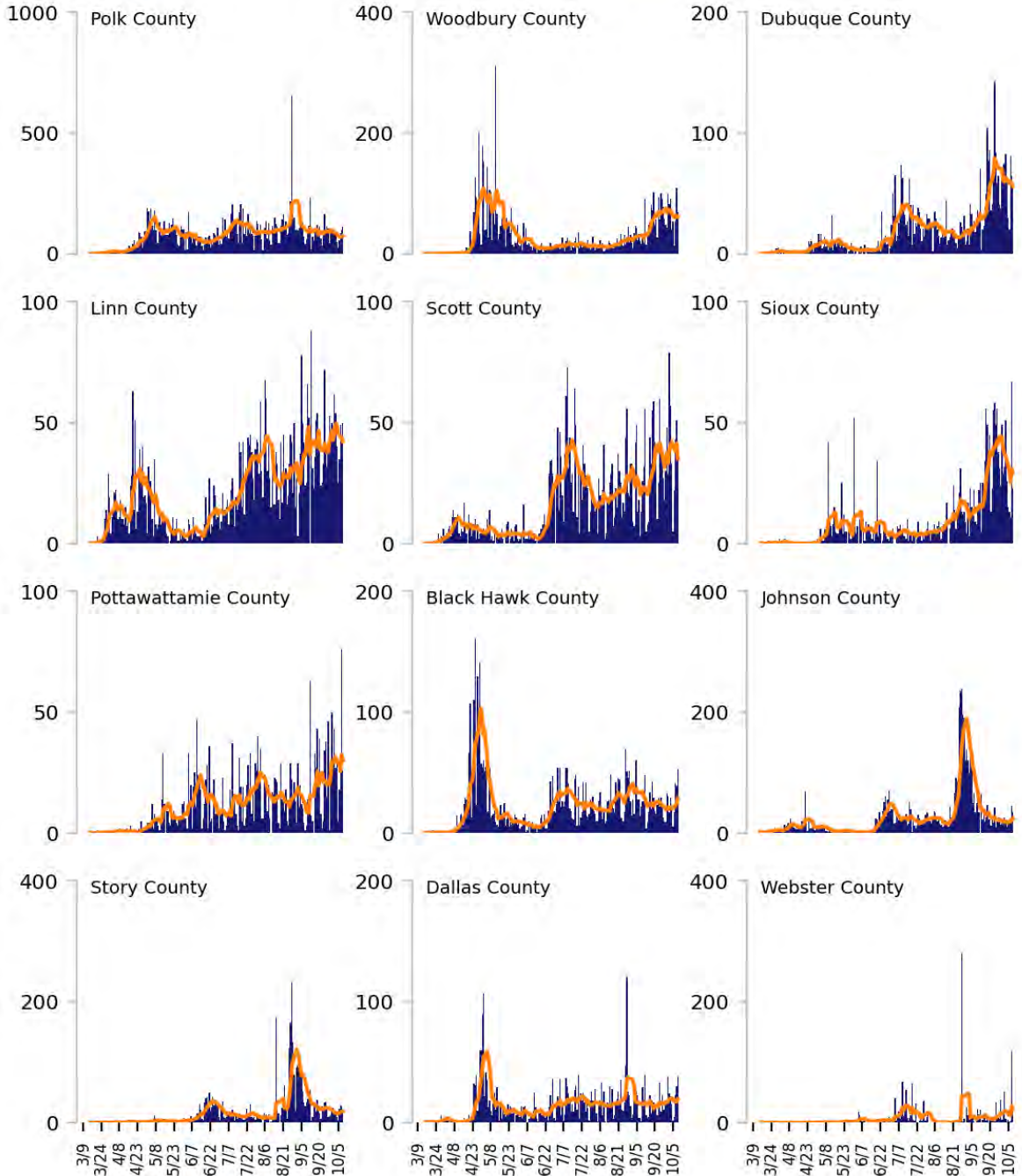
**Testing:** CELR (COVID-19 Electronic Lab Reporting) state health department-reported data through 10/7/2020. Last week is 10/1 - 10/7.



# Top 12 counties based on number of new cases in the last 3 weeks

— Daily COVID-19 Cases (7-day average)    ■ Daily COVID-19 Cases

TOTAL DAILY CASES



DATA SOURCES – Additional data details available under METHODS

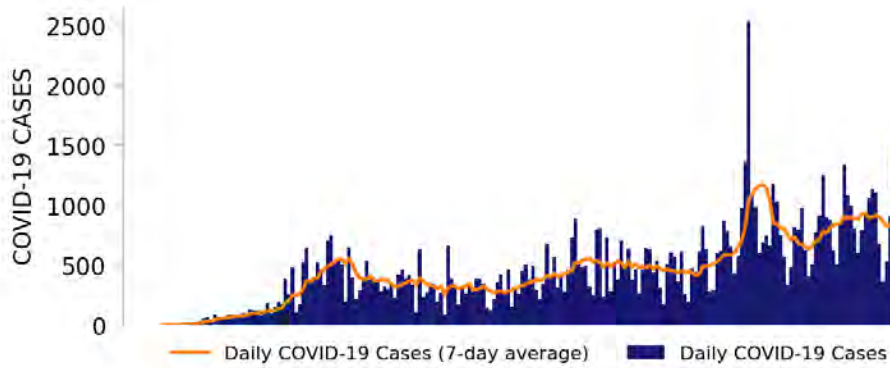
Cases: State values are calculated by aggregating county-level data from USAFacts; therefore, the values may not match those reported directly by the state. Data is through 10/9/2020. Last 3 weeks is 9/19 - 10/9.



# IOWA

STATE REPORT | 10.11.2020

## NEW CASES

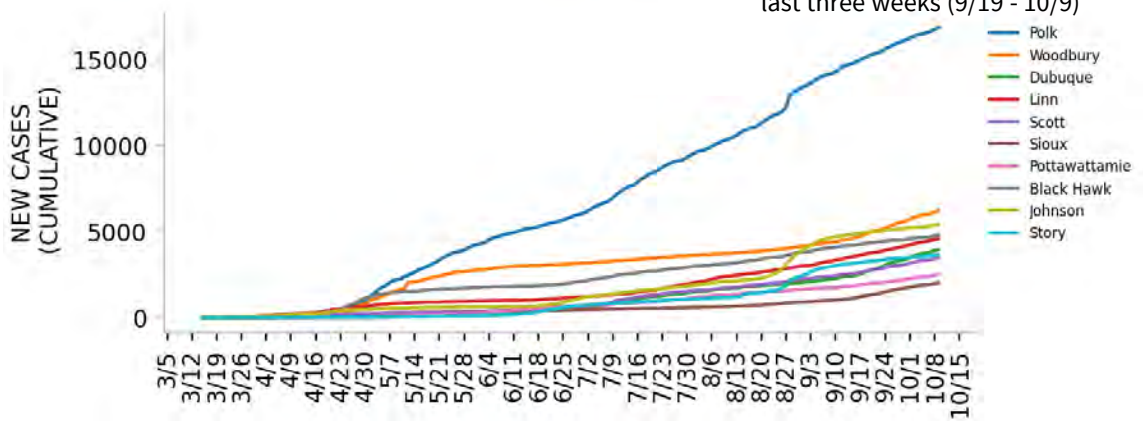


## TESTING



Top counties based on greatest number of new cases in last three weeks (9/19 - 10/9)

## TOP COUNTIES



**DATA SOURCES** – Additional data details available under METHODS

**Note:** Some dates may have incomplete data due to delays in reporting. Data may be backfilled over time, resulting in week-to-week changes.  
**Cases:** State values are calculated by aggregating county-level data from USAFacts; therefore, the values may not match those reported directly by the state. Data is through 10/9/2020.

**Testing:** CELR (COVID-19 Electronic Lab Reporting) state health department-reported data through 10/7/2020.



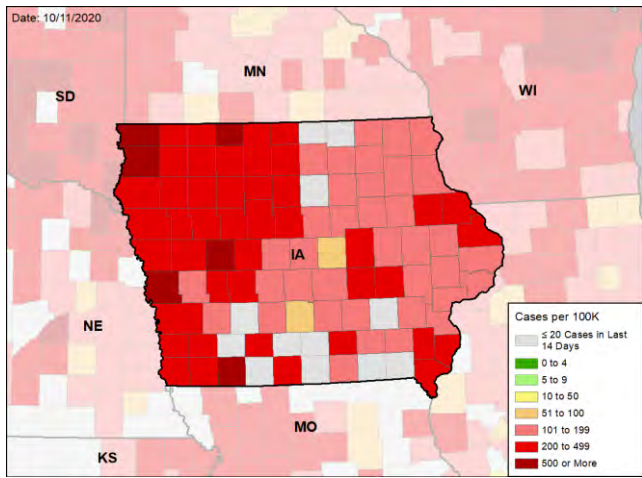


# IOWA

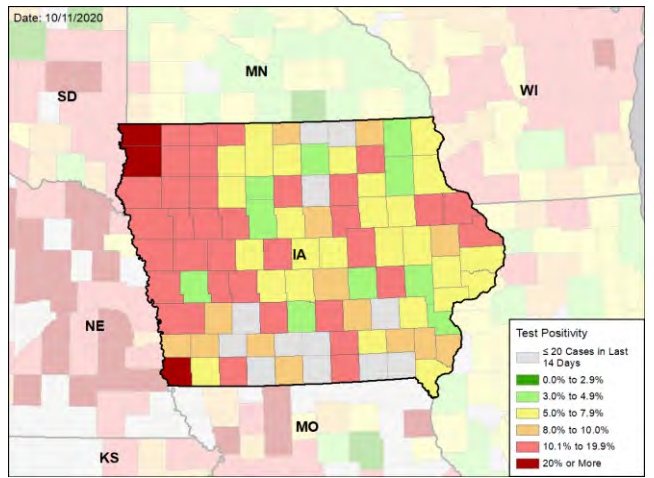
STATE REPORT | 10.11.2020

## CASE RATES AND VIRAL LAB TEST POSITIVITY DURING THE LAST WEEK

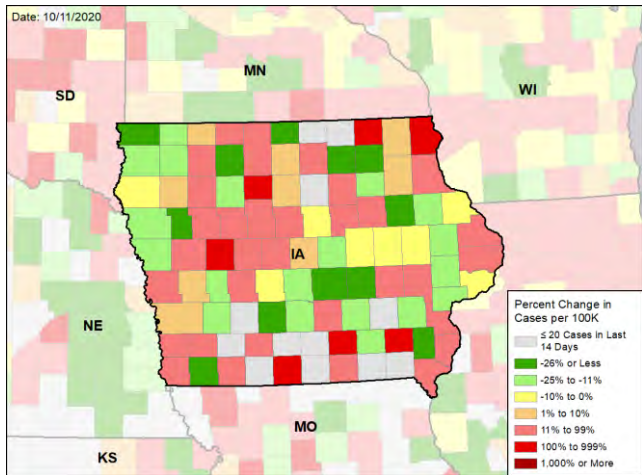
### NEW CASES PER 100,000 DURING THE LAST WEEK



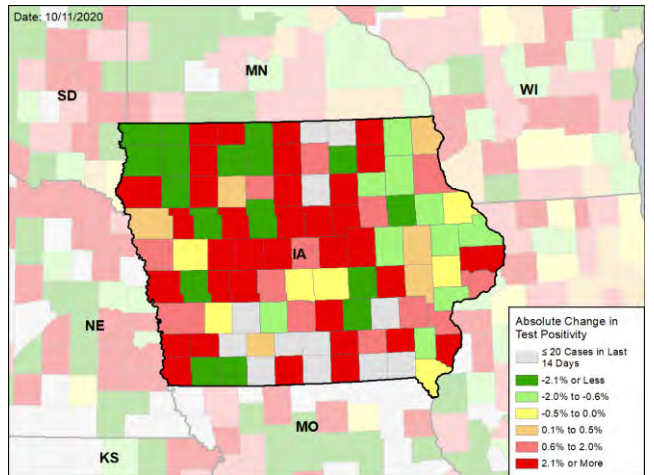
### VIRAL (RT-PCR) LABORATORY TEST POSITIVITY DURING THE LAST WEEK



### WEEKLY CHANGE IN NEW CASES PER 100,000



### WEEKLY CHANGE IN VIRAL (RT-PCR) LABORATORY TEST POSITIVITY



#### DATA SOURCES – Additional data details available under METHODS

**Note:** Some dates may have incomplete data due to delays in reporting. Data may be backfilled over time, resulting in week-to-week changes.

**Cases:** State values are calculated by aggregating county-level data from USAFacts; therefore, the values may not match those reported directly by the state. Data is through 10/9/2020. Last week is 10/3 - 10/9, previous week is 9/26 - 10/2.

**Testing:** CELR (COVID-19 Electronic Lab Reporting) state health department-reported data through 10/7/2020. Last week is 10/1 - 10/7, previous week is 9/24 - 9/30.