

AMERICAN
EXPERIENCE



Non-Profit Org.
US Postage
PAID
Slate Group



The War on Disco

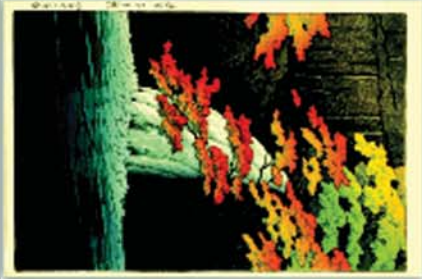
Originating in the 1970s in nightclubs that featured record players instead of live bands, disco was a major stylistic departure from rock. Its rise to the top of the music charts signaled a cultural shift that some found threatening. Disco's roots lay in gay urban subculture, where it was created largely by African American and Latino artists. In the gay dance clubs where it flourished, disco was more than music—it was an expression of gay pride and a statement about lifestyle.

To many outside this community, disco was loathed. On July 12, 1979, the Chicago White Sox featured a "Disco Demolition" event that turned violent as 5,000 people stormed the ballfield, setting fires and ripping up turf.

"War on Disco" explores the cultural movement that gave rise to disco music, and the backlash that tried to destroy it.

Mon 30th 8pm (3-2)

Mon 30th 7pm (3-1)



Program Guide KENW-TV/FM
Eastern New Mexico University
October 2023

Q2.3

Steve Jobs
and Japan

Primetime

Sunday 1st

- 6:00 3-2 Children of the Inquisition, Pt. 1
- 6:00 3-1 Masterpiece "Professor T: The Trial"
- 7:00 3-2 Masterpiece "Professor T: The Trial," Pt. 5
- 3-1 Masterpiece "Unforgotten," Pt. 5
- 8:00 3-2 Masterpiece "Unforgotten" Pt. 5
- 3-1 Masterpiece "Van Der Valk: Magic in Amsterdam," Pt. 1
- 9:00 3-2 Masterpiece "Van Der Valk: Magic in Amsterdam," Pt. 1
- 3-1 Rick Steves Rome
- 3-3 Daytripper
- 9:30 3-3 America's Heartland
- 10:00 3-2 Mona Lisa is Missing
- 3-1 POV "Uyra: The Rising Forest"
- 3-3 This Old House
- 10:30 3-3 Ask This Old House
- 11:00 3-2 Finding Your Roots "Rising from the Ashes"
- 3-1 Mona Lisa Is Missing
- 3-3 Motorweek
- 11:30 3-3 Texas Parks and Wildlife
- 12:00 3-2 Nova "Operation Lighthouse Rescue"
- 3-1 Masterpiece "Unforgotten," Pt. 5
- 3-3 America Outdoors

Monday 2nd

- 6:00 3-2 PBS NewsHour
- 3-1 PBS NewsHour
- 7:00 3-2 Antiques Roadshow "Vintage Hartford 2023," Pt. 1
- 3-1 Steve Jobs and Japan
- 8:00 3-2 Antiques Roadshow "Vintage Las Vegas 2021," Pt. 1
- 3-1 Children of the Inquisition, Pt. 1
- 9:00 3-2 POV "Murders that Matter"
- 3-1 Antiques Roadshow
- 3-3 Masterpiece "Professor T"
- 10:00 3-1 Amanpour and Company
- 3-3 Masterpiece "Unforgotten"
- 10:30 3-2 Texas Parks and Wildlife
- 11:00 3-2 Antiques Roadshow "Vintage Hartford 2023," Pt. 1
- 3-1 PBS NewsHour
- 3-3 Masterpiece "Van Der Valk"
- 12:00 3-2 PBS NewsHour
- 3-1 POV "Murders that Matter"
- 3-3 Chef's Life

Tuesday 3rd

- 6:00 3-2 PBS NewsHour
- 3-1 PBS NewsHour
- 7:00 3-2 Finding Your Roots "Family: Lost and Found"
- 3-1 Becoming Frida Kahlo, Pt. 3
- 8:00 3-2 Becoming Frida Kahlo "A Star is Born," Pt. 3
- 3-1 Connected: A Search for Unity
- 9:00 3-2 Frontline "The Astros Edge: Triumph and Scandal in Major League Baseball"
- 3-1 Finding Your Roots
- 3-3 Antiques Roadshow
- 10:00 3-1 Amanpour and Company
- 3-3 History Detectives
- 10:30 3-2 Life Begins in Wonder, Let Life End in Wonder
- 11:00 3-2 Amanpour and Company
- 3-1 PBS NewsHour
- 3-3 America Outdoors
- 12:00 3-2 PBS NewsHour
- 3-1 Frontline "The Astros Edge"
- 2 3-3 America's Heartland

Wednesday 4th

- 6:00 3-2 PBS NewsHour
- 3-1 PBS NewsHour
- 7:00 3-2 America Outdoors "Utah: Choose Your Path"
- 3-1 Free to Speak
- 8:00 3-2 Nova "Ancient Earth: Birth of the Sky"
- 3-1 Evolution Earth
- 9:00 3-2 Evolution Earth "Grasslands"
- 3-1 America Outdoors
- 3-3 Finding Your Roots
- 10:00 3-2 Healthy Minds "Mental Health Institution"
- 3-1 Amanpour and Company
- 3-3 Pati's Mexican Table
- 10:30 3-2 This Old House "Newburyport: Bed Race"
- 3-3 J. Schwanke Life in Bloom
- 11:00 3-2 Amanpour and Company
- 3-1 PBS NewsHour
- 3-3 Travels with Darley
- 11:30 3-3 Rick Steves' Europe
- 12:00 3-2 PBS NewsHour
- 3-1 Nova "Ancient Earth: Birth of the Sky"
- 3-3 Reconnecting Roots

Steve Jobs and Japan

Steve Jobs and Japan explores how Japan influenced and inspired Steve Job's life and technological innovation.

Steve Jobs was a titan of tech. He had a deep love of Japanese culture, from woodblock prints to ceramics, and the inner workings of electronics giant Sony. His lifelong fascination with Japan transformed his entire life: his religion, his diet, his fashion, and his design philosophy.

In this special, close friends, colleagues and design experts shed new light on how this came to be.

Sun 1st 10am (3-2)

Tue 10th 8pm (3-2)

Thu 26th 7pm (3-2)

Mon 2nd 7pm (3-1)



Thursday 5th

- 6:00 3-2 PBS NewsHour
- 3-1 PBS NewsHour
- 7:00 3-2 Frontline "The Astros Edge: Triumph and Scandal in Major League Baseball"
- 3-1 Songs at the Center
- 7:30 3-1 Culinary Concerts
- 8:00 3-1 Red Green Show "Real Estate Project"
- 8:30 3-2 Tales of Madness
- 3-1 You Should Know
- 9:00 3-2 SportsLook with Doc Elder
- 3-1 Creative Living
- 3-3 Evolution Earth
- 9:30 3-2 Red Green Show "Real Estate Project"
- 3-1 SportsLook with Doc Elder

Friday 6th

- 10:00 3-2 Woodsongs "Gareth Pearson and Never Come Down"
- 3-1 Amanpour and Company
- 3-3 America Outdoors
- 11:00 3-2 Amanpour and Company
- 3-1 PBS NewsHour
- 3-3 Nova
- 12:00 3-2 PBS NewsHour
- 3-1 Out in Rural America
- 3-3 Closer to the Truth
- 6:00 3-2 PBS NewsHour
- 3-1 PBS NewsHour
- 7:00 3-2 Market to Market
- 3-1 Washington Week
- 7:30 3-2 Consuelo Mack Wealthtrack
- 3-1 Firing Line
- 8:00 3-2 Washington Week
- 3-1 Nova "Ancient Earth: Birth of the Sky"
- 8:30 3-2 Firing Line
- 9:00 3-2 American Masters "Max Roach: The Drum Also Waltzes"
- 3-1 Frontline "The Astros Edge: Triumph and Scandal in Major League Baseball"
- 3-3 This Old House

FRONTLINE

The Astro Edge: Triumph and Scandal in Major League Baseball

"The Astro Edge" is about the making of one of the best teams and worst scandals in modern MLB history, the limited accountability, and how Astros baseball changed the sport.

The episode focuses on the trash can-banging, sign-stealing scheme in which players used live video feeds and banged on the side of a trash can to alert the batter about what type of pitch was coming. The scheme helped the Astros win their first title and made them arguably the most villainized team in the sport. The scheme came to light after the team lost in the 2019 World Series. 90 minutes.

Tue 3rd 9pm (3-2)

Thu 5th 7pm (3-2)

Fri 6th 9pm (3-1)

Elon Musk's Twitter Takeover

Frontline investigates Elon Musk's long and often troubled relationship with Twitter. It examines Musk's journey from one of the platform's most provocative users to its sole proprietor, exploring the acquisition, free speech and the company's uncertain future. Two hours.

Tue 10th 9pm(3-2)

Thu 12th 7pm(3-2)

Fri 13th 9pm (3-1)

- 9:30 3-3 Ask This Old House
 10:00 3-3 American Woodshop
 10:30 3-2 Masterpiece "Unforgotten," Pt. 5
 3-1 Lillie Shockney: Breakthrough Women in Science
 3-3 Woodsmith Shop
 11:00 3-1 PBS NewsHour
 3-3 Joy of Painting
 11:30 3-2 Rick Steves' Europe "Art of Prehistoric Europe," Pt. 1
 3-3 Painting and Travel
 12:00 3-2 PBS NewsHour
 3-1 Astrid
 3-3 Start Up

Saturday 7th

- 6:00 3-2 Report from Santa Fe
 3-1 Antiques Roadshow
 6:30 3-2 America's Heartland
 7:00 3-2 Lawrence Welk Show
 "Tribute to Disney"
 3-1 American Masters "Max Roach: The Drum Also Waltzes"
 8:00 3-2 Today's Wild West
 8:30 3-2 Red Green Show
 "Firewood Project"
 3-1 Cheech
 9:00 3-2 Austin City Limits
 "Rodrigo Y Gabriela"
 3-1 Caverns Sessions
 3-3 Lawrence Welk Show
 9:30 3-1 PBS Arts Talk
 10:00 3-2 Nova "Ancient Earth: Birth of the Sky"
 3-1 Austin City Limits
 3-3 Classic Gospel
 11:00 3-2 America Outdoors
 "Utah: Choose Your Path"
 3-1 Nova "Ancient Earth: Birth of the Sky"
 3-3 Woodsongs
 12:00 3-2 Austin City Limits
 3-1 America Outdoors
 3-3 Song of the Mountains

Sunday 8th

- 6:00 3-2 Children of the Inquisition, Pt. 2
 3-1 Masterpiece "Professor T"
 7:00 3-2 Masterpiece "Professor T: Swansong"
 3-1 Masterpiece "Unforgotten" Pt. 6
 8:00 3-2 Masterpiece "Unforgotten," Pt. 6
 3-1 Masterpiece "Van Der Valk"
 9:00 3-2 Masterpiece "Van Der Valk: Magic in Amsterdam," Pt. 2
 3-1 Marriage, Pt. 1
 3-3 Daytripper
 9:30 3-3 America's Heartland
 10:00 3-2 Marriage, Pt. 1
 This four-part drama sees married couple Ian and Emma negotiate the insecurities, the ambiguities, the hopes and the fears, the risks and the gifts of a long-term intimate relationship.
 3-1 POV "Murders that Matter"
 3-3 This Old House
 10:30 3-3 Ask This Old House
 11:00 3-2 Finding Your Roots "Family: Lost and Found"
 3-3 Motorweek
 11:30 3-1 POV Shorts "Under G-D"
 3-3 Texas Parks and Wildlife
 12:00 3-2 Nova "Ancient Earth: Birth of the Sky"
 3-1 Masterpiece "Unforgotten," Pt. 6
 3-3 America Outdoors

NOVA Ancient Earth

The five-part series "Ancient Earth" presents an epic biography of the Earth, delving into deep history to uncover the most dramatic events in our planet's past, from its birth to the emergence of humanity.



See how Earth transformed from a barren hellscape to a planet capable of sustaining life, how life survived on a planet covered in ice from pole to pole, how life made the leap to land, and how life bounced back after a cataclysmic extinction wiped out some 90% of all species.

With astonishing visuals and contributions from leading scientists, the result is an exciting fusion of sweeping storytelling and freshly delivered insights illuminating billions of years of Earth's epic history.

Wed 8pm begins 4th (3-2)

Sat 10pm begins 7th (3-2)

Thu 4pm begins 5th (3-1)

Fri 8pm begins 6th (3-1)

Sat 11pm begins 7th (3-1)

Sun 4pm begins 8th (3-1)

Monday 9th

- 6:00 3-2 PBS NewsHour
 3-1 PBS NewsHour
 7:00 3-2 Antiques Roadshow
 "Vintage Hartford"
 3-1 Red State, Blue Governor
 8:00 3-2 Antiques Roadshow
 "Vintage Las Vegas 2021"
 3-1 Children of Inquisition, Pt. 2
 3-1 Antiques Roadshow
 3-3 Masterpiece "Professor T"
 9:00 3-2 Independent Lens "El Equipo"
 10:00 3-1 Amanpour and Company
 3-3 Masterpiece "Unforgotten"
 10:30 3-2 Texas Parks and Wildlife
 11:00 3-2 Antiques Roadshow
 3-1 PBS NewsHour
 3-3 Masterpiece "Van Der Valk"
 12:00 3-2 PBS NewsHour
 3-1 Independent Lens "El Equipo"
 3-3 Chef's Life

Tuesday 10th

- 6:00 3-2 PBS NewsHour
 3-1 PBS NewsHour
 7:00 3-2 Finding Your Roots "Chosen"
 3-1 Byron Janis Story
 8:00 3-2 Steve Jobs and Japan
 3-1 Connected: A Search for Unity
 9:00 3-2 Frontline "Elon Musk's Twitter Takeover"
 3-1 Finding Your Roots
 3-3 Antiques Roadshow
 10:00 3-1 Amanpour and Company
 3-3 History Detectives
 11:00 3-2 Amanpour and Company
 3-1 PBS NewsHour
 3-3 America Outdoors

- 12:00 3-2 PBS NewsHour
 3-1 Frontline "Elon Musk's Twitter Takeover"
 3-3 America's Heartland

Wednesday 11th

- 6:00 3-2 PBS NewsHour
 3-1 PBS NewsHour
 7:00 3-2 America Outdoors
 "Maine: Embrace the Cold"
 3-1 Free to Speak
 8:00 3-2 Nova "Ancient Earth: Frozen"
 3-1 Secrets of the Dead
 9:00 3-2 Secrets of the Dead
 "The Sunken Basilica"
 3-1 America Outdoors
 3-3 Finding Your Roots
 10:00 3-2 Healthy Minds "Rapid-Acting Transcranial Magnetic Stimulation"
 3-1 Amanpour and Company
 3-3 Pati's Mexican Table
 10:30 3-2 This Old House "Lexington: On a Mission"
 3-3 J. Schwanke's Life in Bloom
 11:00 3-2 Amanpour and Company
 3-1 PBS NewsHour
 3-3 Travels with Darley
 11:30 3-3 Rick Steves' Europe
 12:00 3-2 PBS NewsHour
 3-1 Nova "Ancient Earth: Frozen"
 3-3 American Buffalo, Pt. 1

INDEPENDENT LENS El Equipo

"El Equipo" focuses on the Nobel Peace Prize nominated team that changed the course of forensic science and human rights.

In 1984, Dr. Clyde Snow, an esteemed anthropologist from Texas, got a call to go to Argentina and investigate "los desaparecidos,"— or "the disappeared"—the term given to those who went missing under the country's military dictatorship from 1976 to 1983. In Argentina, Dr. Snow set out to uncover the fates of the estimated 30,000 people who were victims of enforced disappearance.



Unwilling to work with many of the established scientists who had collaborated with the military dictatorship, Snow trained a group of Latin students—some as young as 19 years old—in the use of forensic anthropology to investigate the fate of those missing, provide answers to thousands of families, and hold the government accountable for the crimes committed.

The documentary delves into some of the most high-profile cases of the team's history, including the case of the missing 43 students in Mexico.

Mon 9th 9pm (3-2)

Sun 15th 10pm (3-1)

Secrets of the Dead

The Sunken Basilica

Uncover the sunken remains of a 4th century basilica in western Turkey. Submerged beneath the waters of Lake Iznik for hundreds of years, the church could reveal crucial insights into the early days of Christianity.

Wed 11th 9pm (3-2)

Sun 15th 10am/6pm (3-2)

Wed 11th 8pm (3-1)

Thu 12th 3pm (3-1)

Jurassic Fortunes

Discover the world of dinosaur fossil collecting. Hear perspectives on the controversial hobby from private collectors, paleontologists, and others as Big John—the largest Triceratops fossil ever found—is assembled in Italy and auctioned in France.

Wed 18th 9pm (3-2)

Sun 22nd 10am/6pm (3-2)

Wed 18th 8pm (3-1)

Thu 19th 3pm (3-1)

Eiffel's Race to the Top

Discover the untold story behind Paris' most famous landmark and the race to build a monument 1,000 feet tall. Through dramatic recreations, official renderings and personal archives, see how the Eiffel Tower became an icon.



Wed 25th 9pm (3-2)

Sun 29th 6pm (3-2)

Wed 25th 8pm (3-1)

Thu 26th 3pm (3-1)

Thursday 12th

- 6:00 3-2 PBS NewsHour
- 3-1 PBS NewsHour
- 7:00 3-2 Frontline "Elon Musk's Twitter Takeover"
- 3-1 Song of the Mountains
- 8:00 3-1 Red Green Show
- 8:30 3-1 You Should Know
- 9:00 3-2 SportsLook with Doc Elder
- 3-1 Creative Living
- 3-3 Secrets of the dead
- 9:30 3-2 Red Green Show
- "Stuck Truck Project"
- 3-1 SportsLook with Doc Elder
- 10:00 3-2 Woodsongs "Christie Lenee and Femina"
- 3-1 Amanpour and Company
- 3-3 America Outdoors
- 11:00 3-2 Amanpour and Company
- 3-1 PBS NewsHour
- 3-3 Nova

- 12:00 3-2 PBS NewsHour
- 3-1 Chavis Chronicles
- 3-3 American Buffalo, Pt. 2

Friday 13th

- 6:00 3-2 PBS NewsHour
- 3-1 PBS NewsHour
- 7:00 3-2 Market to Market
- 3-1 Washington Week
- 7:30 3-2 Consuelo Mack Wealthtrack
- 3-1 Firing Line
- 8:00 3-2 Washington Week
- 3-1 Nova "Ancient Earth: Frozen"
- 8:30 3-2 Firing Line
- 9:00 3-2 Next at the Kennedy Center
- "Robert Glasper's Black Radio"
- 3-1 Frontline "Elon Musk's Twitter Takeover"
- 3-3 This Old House
- 9:30 3-3 Ask This Old House
- 10:00 3-2 Masterpiece "Unforgotten," Pt. 6
- 3-3 American Woodshop
- 10:30 3-3 Woodsmith Shop
- 11:00 3-2 Plainspirits
- 3-1 PBS NewsHour
- 3-3 Joy of Painting
- 11:30 3-2 Rick Steves' Europe
- "Art of Ancient Greece"
- 3-3 Painting and Travel
- 12:00 3-2 PBS NewsHour
- 3-1 Astrid
- 3-3 Start Up

Saturday 14th

- 6:00 3-2 Report from Santa Fe
- 3-1 Antiques Roadshow
- 6:30 3-2 America's Heartland
- 7:00 3-2 Lawrence Welk Show
- "Salute to Male Singers"
- 3-1 Next at the Kennedy Center
- "Robert Glasper's Black Radio"
- 8:00 3-2 Today's Wild West
- 3-1 Birthright
- 8:30 3-2 Red Green Show
- "Hydrogen Project"
- 9:00 3-2 Austin City Limits
- "Jenny Lewis"
- 3-1 Caverns Sessions
- 3-3 Lawrence Welk Show
- 9:30 3-1 PBS Arts Talk
- 10:00 3-2 Nova "Ancient Earth: Frozen"
- 3-1 Austin City Limits
- 3-3 Classic Gospel
- 11:00 3-2 America Outdoors "Maine: Embrace the Cold"
- 3-1 Nova "Ancient Earth: Frozen"
- 3-3 Woodsongs
- 12:00 3-2 Austin City Limits
- "Jenny Lewis"
- 3-1 America Outdoors
- 3-3 Song of the Mountains

Sunday 15th

- 6:00 3-2 Secrets of the Dead
- "The Sunken Basilica"
- 3-1 Hotel Portofino
- 7:00 3-2 Hotel Portofino "Returns," Pt. 1
- 3-1 Masterpiece "World on Fire"
- 8:00 3-2 Masterpiece "World on Fire, Pt. 1
- 3-1 Masterpiece "Annika"
- 9:00 3-2 Masterpiece "Annika," Pt. 1
- 3-1 Marriage, Pt. 2
- 3-3 Daytripper
- 9:30 3-3 America's Heartland
- 10:00 3-2 Marriage, Pt. 2
- 3-1 Independent Lens "El Equipo"
- 3-3 This Old House

- 10:30 3-3 Ask This Old House
- 11:00 3-2 Finding Your Roots "Chosen"
- 3-3 Motorweek
- 11:30 3-1 POV Shorts "Water Work"
- 3-3 Texas Parks and Wildlife
- 12:00 3-2 Nova "Ancient Earth: Frozen"
- 3-1 Masterpiece "World on Fire," Pt. 1
- 3-3 Nature "Platypus Guardian"

Monday 16th

- 6:00 3-2 PBS NewsHour
- 3-1 PBS NewsHour
- 7:00 3-2 American Buffalo
- "Blood Memory," Pt. 1
- 3-1 80 Years Later
- 8:00 3-1 American Buffalo, Pt. 1
- 9:00 3-2 Treason Island:
- The Blennerhassett and Aaron Burr
- 3-3 Hotel Portofino, Pt. 1
- 10:00 3-2 Today's Wild West
- 3-1 Amanpour and Company
- 3-3 Masterpiece "World on Fire"
- 10:30 3-2 Texas Parks and Wildlife
- 11:00 3-2 Antiques Roadshow
- "Vintage Las Vegas 2021"
- 3-1 PBS NewsHour
- 3-3 Masterpiece "Annika"
- 12:00 3-2 PBS NewsHour
- 3-1 American Buffalo, Pt. 1
- 3-3 Chef's Life

Masterpiece

World on Fire Season Two

Series two of the hit drama "World on Fire" starts historically with the blitz in the Northwest of England. RAF pilots are sent to destroy German bombers prowling the skies above Manchester, with rescue operations underway on the streets below.



Sun 8pm begins 15th (3-2)

Sun 7pm begins 15th (3-1)

Mon 1pm begins 16th (3-1)

Annika Season Two

In season two, Nicola Walker reprises her role as DI Annika Strandhed, the sharp, witty, and enigmatic head of Glasgow's Marine Homicide Unit, who references history and literature while investigating the unexplained and seemingly unfathomable murders that wash up in Scottish waterways.



Sun 9pm begins 15th (3-2)

Sun 8pm begins 15th (3-1)

Mon 2pm begins 16th (3-1)

KENW-TV SCHEDULES 3-1 (HD), 3-2 (HD) AND 3-3 (SD)

KENW-TV considers Channel 3-2 to be its "main" channel and is listed below in bold. Channel 3-2 is carried by most TV cable systems in eastern New Mexico. Schedule 3-1 can be seen on the HD services of some cable companies. 3-3 is our Children's/Encore Channel (SD) and 3-4 is our FNX Channel (First Nations Experience).

KENW-TV's 3-1 schedule (below in bold italics) is carried by DirecTV and Dish Network in most counties of New Mexico. KENW-TV's 3-3 schedule (below in bold italics) can only be seen over the air with an antenna.

The schedule for KENW-TV's 3-4 FNX Channel is available at <https://fnx.org/schedule/>.

Those using antennas can receive all four channels in the following cities: Clovis/Portales; Hobbs/Lovington; Roswell; Artesia; Ft. Sumner; Tucumcari; Carlsbad; Ruidoso; Mescalero.

KENW-TV digital transmitters are located in: Artesia; Carlsbad; Ft. Sumner; Hobbs; Portales/Clovis; Roswell; Tucumcari; Ruidoso; Mescalero

NATURE

Spy in the Ocean A Nature Miniseries

"Spy in the Ocean," a new four-part series on **Nature**, dives deep with groundbreaking undersea spy cam creatures. The ocean depths are full of mysteries, but luckily there are intrepid spies up to the task of discovering them for us. Go on a mission deep beneath the waves as new animatronic spy creatures explore the seas and capture never-before-seen animal behavior.



Wed 7pm begins 25th (3-2)

Sat 11pm begins 28th (3-2)

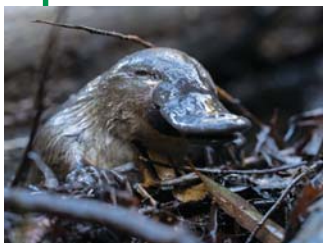
Wed 9pm begins 25th (3-1)

Thu 2pm begins 26th (3-1)

Sat 4pm begins 28th (3-1)

The Platypus Guardian

When photographer Pete Walsh stumbles across a bizarre creature in an Australian urban waterway, he does not know his life is about to change forever. Witness the incredible bond between man and platypus on his mission to save the local platypus species in Tasmania, on **Nature's** "The Platypus Guardian."



Wed 18th 7pm (3-2)

Sat 21st 11pm(3-2)

Wed 18th 9pm (3-1)

Thu 19th 2pm (3-1)

Sat 21st 4pm (3-1)

Tuesday 17th

- 6:00 3-2 PBS NewsHour
- 3-1 PBS NewsHour
- 7:00 3-2 American Buffalo
- "Into the Storm," Pt. 2
- 3-1 Go-Go City: Displacement
- 8:00 3-1 American Buffalo, Pt. 2
- 9:00 3-2 You Should Know
- 3-3 Antiques Roadshow
- 9:30 3-2 Creative Living
- 10:00 3-2 Code Name: Ayalon This is the harrowing story of how a secret bullet factory was built, concealed and operated under a kibbutz near Tel Aviv to defend the fledgling nation of Israel in a pivotal effort in the battle for statehood.
- 3-1 Amanpour and Company
- 3-3 History Detectives
- 11:00 3-2 Amanpour and Company
- 3-1 PBS NewsHour
- 3-3 America Outdoors
- 12:00 3-2 PBS NewsHour
- 3-1 American Buffalo, Pt. 2
- 3-3 America's Heartland

Wednesday 18th

- 6:00 3-2 PBS NewsHour
- 3-1 PBS NewsHour
- 7:00 3-2 Nature "The Platypus Guardian"
- 3-1 Free to Speak
- 8:00 3-2 Nova "Ancient Earth: Life Rising"
- 3-1 Secrets of the Dead
- 9:00 3-2 Secrets of the Dead
- "Jurassic Fortunes"
- 3-1 Nature "The Platypus Guardian"
- 3-3 80 Years Later
- 10:00 3-2 Healthy Minds "Optogenetics"
- 3-1 Amanpour and Company
- 3-3 Pati's Mexican Table
- 10:30 3-2 This Old House "Lexington: Shore We Can"
- 3-3 J. Schwanke's Life in Bloom
- 11:00 3-2 Amanpour and Company
- 3-1 PBS NewsHour
- 3-3 Travels with Darley
- 11:30 3-3 Rick Steves' Europe
- 12:00 3-2 PBS NewsHour
- 3-1 Nova "Ancient Earth: Life Rising"
- 3-3 Reconnecting Roots

Thursday 19th

- 6:00 3-2 PBS NewsHour
- 3-1 PBS NewsHour
- 7:00 3-2 Code Name: Ayalon
- 3-1 Song of the Mountains

- 8:00 3-2 Song of the Mountains
- "Caleb Bailey"
- 3-1 Red Green Show
- 8:30 3-1 You Should Know
- 9:00 3-2 SportsLook with Doc Elder
- 3-1 Creative Living
- 3-3 Secrets of the Dead
- 9:30 3-2 Red Green Show
- "Group Photo Project"
- 3-1 SportsLook with Doc Elder
- 10:00 3-2 Woodsongs "Freedy Johnston and Wildfire"
- 3-1 Amanpour and Company
- 3-3 Nature "Platypus Guardian"
- 11:00 3-2 Amanpour and Company
- 3-1 PBS NewsHour
- 3-3 Nova "Ancient Earth"
- 12:00 3-2 PBS NewsHour
- 3-1 Chavis Chronicles
- 3-3 Closer to Truth

Friday 20th

- 6:00 3-2 PBS NewsHour
- 3-1 PBS NewsHour
- 7:00 3-2 Market to Market
- 3-1 Washington Week
- 7:30 3-2 Consuelo Mack Wealthtrack
- 3-1 Firing Line
- 8:00 3-2 Washington Week
- 3-1 Nova "Ancient Earth: Life Rising"
- 8:30 3-2 Firing Line
- 9:00 3-2 Next at the Kennedy Center
- "Embracing Duality"
- 3-1 Code Name: Ayalon
- 3-3 This Old House
- 9:30 3-3 Ask This Old House
- 10:00 3-2 Tales of Madness This half-hour brings together dramatized retellings of two well-known works by Edgar Allan Poe—"The Raven" and "The Tell-Tale Heart."
- 3-1 Amanpour and Company
- 3-3 American Woodshop
- 10:30 3-2 Hotel Portofino "Return," Pt. 1
- 3-3 Woodsmith Shop
- 11:00 3-1 PBS NewsHour
- 3-3 Joy of Painting
- 11:30 3-2 Rick Steves' Europe
- "Ancient Roman Art"
- 3-3 Painting and Travel
- 12:00 3-2 PBS NewsHour
- 3-1 Astrid
- 3-3 Start Up

3-2 Daytime

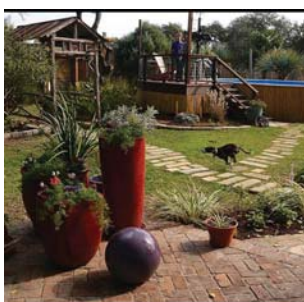
KENW-TV, Channel 3-4, Schedule for FNX available at fnx.org/schedule.

WEEKDAYS

1:00 am Classic Arts Showcase (4-1/2 hrs.)
 5:30 am Wai Lana Yoga
 6:00 am Classical Stretch
 6:30 am BBC World News
 7:00 am–11:00 am PBS Kids (M-Th)
 7:00 am–12:00 noon PBS Kids (Friday only)
 11:00 am Cook's Country (M)
 America's Test Kitchen (Tu)
 Ultimate Guide to Fly Fishing (W)
 The Key Ingredient (Th)
 11:30 am Pati's Mexican Table (M)
 Knit and Crochet Now (Tu)
 American Woodshop (W)
 Ciao Italia (Th)
 12:00 pm Sit and Be Fit (MWF)
 Creative Living (TuTh)
 12:30 pm J. Schwanke's Life in Bloom (M)
 Fit to Stitch (Tu)
 Fons & Porter's Love of Quilting (W)
 Welcome to My Studio (Th)
 Painting and Travel (F)
 1:00 pm–4:30 pm PBS Kids
 4:30 pm Gzero World with Ian Bremmer (M)
 Dooky Chase Kitchen (Tu)
 Jazzy Vegetarian (W)
 Journeys In Japan (Th)
 Wild Nevada (F) (ends 20th)
 Welcome to my Farm (F)
 (begins 27th)
 5:00 pm Washington Week (M)
 Milk Street (Tu)
 News 3 New Mexico (W)
 Healthy Minds (Th) (ends 12th)
 Start Up (begins 19th)
 News 3 New Mexico
 5:30 pm BBC World News America

SATURDAYS

1:00 am Classic Arts Showcase (5 hrs.)
 6:00 am American Woodshop
 6:30 am Texas Parks & Wildlife
 7:00 am Cook's Country
 7:30 am Ciao Italia
 8:00 am America's Test Kitchen
 8:30 am The Key Ingredient
 9:00 am Dooky Chase Kitchen
 9:30 am Motorweek
10:00 am Central Texas Gardener
 10:30 am Garden Smart
 11:00 am Paint This with Jerry Yarnell
 11:30 am Joy of Painting
 12:00 pm Painting & Travel
 12:30 pm Quilt in a Day
 1:00 pm Quilting Arts
 1:30 pm Fons & Porter's Love of Quilting
 2:00 pm Creative Living
 2:30 pm Jazzy Vegetarian
 3:00 pm Knit & Crochet Now
 3:30 pm This Old House
 4:00 pm Ask This Old House
 4:30 pm Welcome to my Studio
 5:00 pm Sewing with Nancy
 5:30 pm Fit 2 Stitch



Central Texas Gardener takes brand-new and seasoned gardeners down a sustainable garden path with organic techniques, water-wise plants and homegrown food. Get design inspiration, hands-on how-to and behind-the-scenes tours of gardeners at home.

SUNDAYS

1:00 am Classic Arts Showcase (5 hrs.)
 6:00 am Painting & Travel
 6:30 am Samantha Brown's Places to Love
 7:00 am Antiques Roadshow
 8:00 am Classic Gospel
 9:00 am Joy of Music
 9:30 am Music & the Spoken Word
 10:00 am Steve Jobs in Japan (1st)
 Sherlock Holmes and the Giant Rat of Sumatra (8th)
 Secrets of the Dead (15th & 22nd)
 Things that Go Bump in the Night (29th)
 11:00 am New Mexico in Focus
 12:00 pm Pati's Mexican Table
 12:30 pm Texas Parks & Wildlife
 1:00 pm Desert Speaks (1st thru 15th)
 American Buffalo (22nd & 29th)
 1:30 pm Closer to Truth (1st thru 15th)
 2:00 pm Becoming Frida Kahlo (1st thru 15th)
 3:00 pm Your Fantastic Mind
 3:30 pm Healthy Minds
 4:00 pm Classic Gospel
 5:00 pm You Should Know
 5:30 pm Rick Steves' Europe (begins 1st)

Saturday 21st

6:00 3-2 Report from Santa Fe
 3-1 Antiques Roadshow
 6:30 3-2 America's Heartland
 7:00 3-2 Lawrence Welk Show
 "Morning-Noon-Night"
 3-1 Next at the Kennedy Center
 8:00 3-2 Today's Wild West
 3-1 Sherlock Holmes and the Giant Rat of Sumatra
 8:30 3-2 Red Green Show
 "Schoolhouse Project"
 3-3 Mister Rogers' Neighborhood
 9:00 3-2 Austin City Limits "Lil Yachty/
 Sudan Archives"
 3-1 Caverns Sessions
 3-3 Lawrence Welk Show
 9:30 3-1 Taco Mafia
 10:00 3-2 Nova "Ancient Earth: Life Rising"
 3-1 Austin City Limits
 3-3 Classic Gospel
 11:00 3-2 Nature "The Platypus Guardian"
 3-1 Nova "Ancient Earth: Life Rising"
 3-3 Woodsongs

12:00 3-2 Austin City Limits "Lil Yachty/
 Sudan Archives"
 3-1 Nature "The Platypus Guardian"
 3-3 Song of the Mountains

Sunday 22nd

6:00 3-2 Secrets of the Dead
 "Jurassic Fortunes"
 3-1 Hotel Portofino, Pt. 2
 7:00 3-2 Hotel Portofino "Alliances," Pt. 2
 3-1 Masterpiece "World on Fire"
 8:00 3-2 Masterpiece "World on Fire," Pt. 2
 3-1 Masterpiece "Annika"
 9:00 3-2 Masterpiece "Annika," Pt. 2
 3-1 Marriage, Pt. 3
 3-3 Daytripper
 9:30 3-3 America's Heartland
 10:00 3-2 Marriage, Pt. 3
 3-1 Go-Go City: Displacement
 3-3 This Old House
 10:30 3-3 Ask This Old House
 11:00 3-2 Finding Your Roots
 "Hidden Kin"
 3-1 Talking Black in America
 3-3 Motorweek

Monday 23rd

6:00 3-2 PBS NewsHour
 3-1 PBS NewsHour
 7:00 3-2 Antiques Roadshow
 "Vintage Chattanooga"
 3-1 Can We All Get Along?
 8:00 3-2 Antiques Roadshow
 "Vintage Wichita"
 3-1 Treason Island:
 The Blennerhassett and Aaron Burr
 9:00 3-2 POV "Aurora's Sunrise"
 3-1 Antiques Roadshow
 3-3 Hotel Portofino, Pt. 2
 10:00 3-1 Amanpour and Company
 3-3 Masterpiece "World on Fire"
 10:30 3-2 Texas Parks and Wildlife

3-1 Daytime

MONDAYS

1:00 am	Classic Arts Showcase (4 hrs.)
5:00 am	Classical Stretch
5:30 am	Happy Yoga
6:00 am	New Mexico in Focus
7:00 am	World's Greatest Cemeteries II
7:30 am	Travel Detective
8:00 am	Rick Steves' Europe
8:30 am	Jacques Pepin: Heart & Soul
9:00 am	Pati's Mexican Table
9:30 am	Kevin Belton's Cookin' Louisiana
10:00 am	Growing a Greener World
10:30 am	Jazzy Vegetarian
11:00 am	Classical Stretch
11:30 am	Sit and Be Fit
12:00 pm	Masterpiece "Professor T" (ends 9th)
	Hotel Portofino (begins 16th)
1:00 pm	Masterpiece "Unforgotten" (ends 9th)
	Masterpiece "World on Fire" (begins 16th)
2:00 pm	Masterpiece "Van der Valk" (ends 9th)
	Masterpiece "Annika" (begins 16th)
3:00 pm	Travels with Darley
3:30 pm	Museum Access (ends 23rd)
	Renaissance Woman Restored (30th)
4:00 pm	America's Heartland
4:30 pm	Daytripper
5:00 pm	Texas Parks and Wildlife
5:30 pm	BBC World News America

THURSDAYS

1:00 am	Classic Arts Showcase (4 hrs.)
5:00 am	Classical Stretch
5:30 am	Happy Yoga
6:00 am	Story in the Public Square
6:30 am	Canada Files
7:00 am	Texas Parks & Wildlife
7:30 am	Boondock Nation
8:00 am	Antiques Roadshow
9:00 am	Fons & Porters Love of Quilting
9:30 am	Quilting Arts
10:00 am	Fresh Quilting
10:30 am	Fit 2 Stitch
11:00 am	Classical Stretch
11:30 am	Happy Yoga
12:00 pm	Milk Street
12:30 pm	Lucky Chow
1:00 pm	Ciao Italia
1:30 pm	Jacques Pepin: Heart & Soul
2:00 pm	America Outdoors (ends 12th)
	Nature "The Platypus Guardian" (19th)
	Nature "Spy in the Ocean" (begins 26th)
3:00 pm	Evolution Earth (ends 5th)
	Secrets of the Dead (begins 12th)
4:00 pm	Nova
5:00 pm	Healthy Minds
5:30 pm	BBC World News America

TUESDAYS

1:00 am	Classic Arts Showcase (4 hrs.)
5:00 am	Classical Stretch
5:30 am	Happy Yoga
6:00 am	Antiques Roadshow
7:00 am	Samantha Brown's Places to Love
7:30 am	Reconnecting Roots
8:00 am	Closer to Truth
8:30 am	Tell Me More with Kelly Corrigan
9:00 am	School of Greatness
9:30 am	Your Fantastic Mind
10:00 am	Getting Dot Older II
10:30 am	Garden Fit (ends 10th)
	Your Fountain of Youth (begins 17th)
11:00 am	Classical Stretch
11:30 am	Happy Yoga
12:00 pm	Christina Cooks
12:30 pm	My Greek Table
1:00 pm	Life of Loi Mediterranean (ends 24th)
	New Scandinavian Cooking (begins 31st)
1:30 pm	Taste of History
2:00 pm	History Detectives
3:00 pm	Antiques Roadshow
4:00 pm	Consuelo Mack Wealthtrack
4:30 pm	Start Up
5:00 pm	Firing Line
5:30 pm	BBC World News America

FRIDAYS

1:00 am	Classic Arts Showcase (4 hrs.)
5:00 am	Classical Stretch
5:30 am	Yndi Yoga
6:00 am	America's Heartland
6:30 am	Garden Smart
7:00 am	Song of the Mountains
8:00 am	Songs at the Center
8:30 am	Cavern Sessions
9:00 am	Woodsongs
10:00 am	Joy of Painting
10:30 am	Painting and Travel
11:00 am	Classical Stretch
11:30 am	Sit and Be Fit
12:00 pm	This Old House
12:30 pm	Ask This Old House
1:00 pm	Radical Restoration
1:30 pm	Sewing with Nancy
2:00 pm	Creative Living
2:30 pm	Weekends with Yankee
3:00 pm	Boondock Nation
3:30 pm	S. Brown's Places to Love
4:00 pm	America from the Ground Up
4:30 pm	Gzero World with Ian Bremmer
5:00 pm	News 3 New Mexico
5:30 pm	BBC World News America

WEDNESDAYS

1:00 am	Classic Arts Showcase (4 hrs.)
5:00 am	Classical Stretch
5:30 am	Happy Yoga
6:00 am	History with David Rubenstein (ends 4th)
	Whitney Reynolds Show (begins 11th)
6:30 am	Start Up
7:00 am	Travels with Darley
7:30 am	Museum Access
8:00 am	History Detectives
9:00 am	Farmer and the Foodie
9:30 am	J. Schwanke's Life in Bloom
10:00 am	American Woodshop
10:30 am	Woodsmith Shop
11:00 am	Classical Stretch
11:30 am	Sit and Be Fit
12:00 pm	Sara's Weeknight Meals
12:30 pm	Cook's Country
1:00 pm	Dooky Chase Kitchen
1:30 pm	Tim Farmer's Country Kitchen
2:00 pm	Steven Raichlen's Planet BBQ
2:30 pm	Reconnecting Roots
3:00 pm	No Passport Required
4:00 pm	Lidia's Kitchen
4:30 pm	America's Test Kitchen
5:00 pm	News 3 New Mexico
5:30 pm	BBC World News America

SATURDAYS

11:00 am	Kevin Belton's New Orleans
11:30 am	Pati's Mexican Table
12:00 pm	This Old House
12:30 pm	This Old House
1:00 pm	Ask This Old House
1:30 pm	Motorweek
2:00 pm	Paint This with Jerry Yarnell
2:30 pm	Chef's Life
3:00 pm	America's Test Kitchen
3:00 pm	Cook's Country
4:00 pm	America Outdoors (ends 14th)
	Nature "The Platypus Guardian" (21st)
	Nature "Spy in the Ocean" (begins 28th)
5:00 pm	PBS News Weekend
5:30 pm	Report from Santa Fe

SUNDAYS

11:00 am	Washington Week
11:30 am	Energy Switch
12:00 pm	New Mexico in Focus
1:00 pm	Consuelo Mack Wealthtrack
1:30 pm	Market to Market
2:00 pm	Growing a Greener World
2:30 pm	J. Schwanke Life in Bloom
3:00 pm	Celebrity Antique Roadshow
4:00 pm	Nova
5:00 pm	PBS News Weekend
5:30 pm	Closer to Truth



- 11:00 3-2 Antiques Roadshow
"Vintage Chattanooga"
3-1 PBS NewsHour
3-3 Masterpiece "Annika"
12:00 3-2 PBS NewsHour
3-1 POV "Aurora's Sunrise"
3-3 Chef's Life

Tuesday 24th

- 6:00 3-2 PBS NewsHour
3-1 PBS NewsHour
7:00 3-2 Finding Your Roots
"And Still I Rise"
3-1 Native America, Pt. 1
8:00 3-2 Native America "New Worlds," Pt. 1
3-1 Connected: A Search for Unity
9:00 3-2 You Should Know
3-1 Finding Your Roots
3-3 Antiques Roadshow
9:30 3-2 Creative Living
10:00 3-2 Bring Her Home
3-1 Amanpour and Company
3-3 History Detectives
11:00 3-2 Amanpour and Company
3-1 PBS NewsHour
3-3 Nature "Platypus Guardian"
12:00 3-2 PBS NewsHour
3-1 Lillie D. Shockney: Breakthrough
Women in Science
3-3 America's Heartland

Wednesday 25th

- 6:00 3-2 PBS NewsHour
3-1 PBS NewsHour
7:00 3-2 Nature "Spy in the Ocean:
Deep Thinkers," Pt. 1
3-1 Bring Her Home
8:00 3-2 Nova "Ancient Earth: Inferno"
3-1 Secrets of the Dead
9:00 3-2 Secrets of the Dead
"Eiffel's Race to the Top"
3-1 Nature "Spy in the Ocean:
Deep Thinkers," Pt. 1
3-3 Finding Your Roots
10:00 3-2 Healthy Minds "Optogenetics"
3-1 Amanpour and Company
3-3 Pati's Mexican Table
10:30 3-2 This Old House "Lexington:
The Big Dig"
3-3 J. Schwanke's Life in Boom
11:00 3-2 Amanpour and Company
3-1 PBS NewsHour
3-3 Travels with Darley
11:30 3-3 Rick Steves' Europe
12:00 3-2 PBS NewsHour
3-1 Nova "Ancient Earth: Inferno"
3-3 Reconnecting Roots

Thursday 26th

- 6:00 3-2 PBS NewsHour
3-1 PBS NewsHour
7:00 3-2 Steve Jobs and Japan
3-1 Song of the Mountains
8:00 3-2 Song of the Mountains "Sideline"
3-1 Red Green Show
8:30 3-1 You Should Know
9:00 3-2 SportsLook with Doc Elder
3-1 Creative Living
3-3 Secrets of the Dead
"Eiffel's Race to the Top"
9:30 3-2 Red Green Show "The Guard Dog Project"
3-1 SportsLook with Doc Elder
10:00 3-2 Woodsongs "Rhonda Vincent and the
Rage"
3-1 Amanpour and Company
3-3 Nature "Spy in the Ocean" Miniseries

Our KENW Supporters

Please join us in thanking and supporting these businesses and organizations that help make our programming possible.

Call Rena Garrett at 575 562-2112 for TV or
Evelyn Ledbetter for FM to add your support.

In Support of KENW-TV

Anderson Bethany Funeral Home
and Crematory, Roswell
Chaves County Farm and Livestock Bureau,
Dexter and Roswell
CJ's Pill Box, Portales
Clovis Community College Cultural Art
Series
Eastern New Mexico News, Clovis and
Portales
Eastern New Mexico University, Portales
Farmers' Electric Cooperative, Inc. of NM,
Clovis
Featherstone Development Corp., Roswell
Friends of Living Desert, Carlsbad
Havenor Operating Company, Roswell
James Polk Stone Community Bank
Clovis, Eunice, Hagerman, Hobbs,
Portales, Roswell, Carlsbad
Living Desert Zoo & Gardens State Park,
Carlsbad
New Mexico Department of Agriculture
Paul and Elise Schmidt
Plateau, Clovis

Roosevelt County Electric Cooperative
Security State Bank, Farwell, TX
Sew Irresistible Quilt Shop, Farwell, TX
Valley Mower Clinic, Inc., Clovis
Yucca, Portales

In Support of KENW-FM

Atwood, Malone, Turner & Sabin,
Attorneys at Law, Roswell
City of Carlsbad, NM
City of Raton, NM
Featherstone Development Corp., Roswell
First Presbyterian Church, Roswell
Historic Eklund Hotel, Clayton, NM
jf maddox foundation
New Mexico Arts
paper trail..., Las Vegas, NM
Roswell Jazz Festival
Taco Box, Clovis and Portales
Taylor Water Well Service, Carlsbad
United Supermarkets, Market Street,
Albertsons' Market
Western Heritage Museum Lea County,
Cowboy Hall of Fame, Hobbs

Thank You for Your Support!

- 11:00 3-2 Amanpour and Company
3-1 PBS NewsHour
3-3 Nova "Ancient Earth"
12:00 3-2 PBS NewsHour
3-1 Chavis Chronicles
3-3 Closer to the Truth

Friday 27th

- 6:00 3-2 PBS NewsHour
3-1 PBS NewsHour
7:00 3-2 Market to Market
3-1 Washington Week
7:30 3-2 Consuelo Mack Wealthtrack
3-1 Firing Line
8:00 3-2 Washington Week
3-1 Nova "Ancient Earth: Inferno"
8:30 3-2 Firing Line
9:00 3-2 Great Performances "New York
City Ballet in Madrid"
3-1 Repairing the World
3-3 This Old House
9:30 3-3 Ask This Old House
10:30 3-2 Hotel Portofino "Alliances," Pt. 2
3-3 American Woodshop
10:30 3-1 Opioids and First Responders
3-3 Woodsmith Shop
11:00 3-1 PBS NewsHour
11:30 3-2 Rick Steves' Europe
"Art of the Roman Empire"
3-3 Joy of Painting 3-3
Painting and Travel
12:00 3-1 Astrid
3-3 Start Up



Great Performances

New York City Ballet in Madrid

The New York City Ballet presents an evening of works recorded during the company's European tour in spring 2023. Captured in peak performance at Madrid's Teatro Real, the program features two masterpieces choreographed by NYCB co-founder and original Artistic Director George Balanchine, "Serenade" and "Square Dance."

Fri 27th 9pm (3-2)

Sat 28th 7pm (3-1)

Channel 3-2

WEEKDAYS

- 7:00 am Wild Kratts
- 7:30 am Curious George
- 8:00 am Daniel Tiger's Neighborhood
- 8:30 am Rosie's Rules
- 9:00 am Sesame Street
- 9:30 am Work It Out Wombats!**
- 10:00 am Donkey Hodie
- 10:30 am Pinkalicious & Peterrific
- 11:00 am Albie's Elevator (F)
- 11:30 am Mister Rogers (F)
- 1:00 pm Elinor Wonders Why
- 1:30 pm Nature Cat
- 2:00 pm Hero Elementary
- 2:30 pm Molly of Denali
- 3:00 pm Alma's Way
- 3:30 pm Arthur
- 4:00 pm Odd Squad



Work It Out Wombats!

Stars Malik, Zadie, and Zeke—three energetic and creative marsupial siblings—live with their grandmother in her treehouse apartment complex. The playful trio demonstrate computational thinking (CT) for preschoolers, a way of thinking that enables them to solve problems, express themselves, and accomplish tasks using the practices, processes and ideas at the core of computer science.

Channel 3-3

WEEKDAYS

- 5:00 am Molly of Denali
- 5:30 am Alma's Way
- 6:00 am Wild Kratts
- 6:30 am Curious George
- 7:00 am Daniel Tiger's Neighborhood
- 7:30 am Rosie's Rules
- 8:00 am Sesame Street
- 8:30 am Work It Out Wombats!**
- 9:00 am Donkey Hodie
- 9:30 am Pinkalicious & Peterrific
- 10:00 am Elinor Wonders Why
- 10:30 am Nature Cat
- 11:00 am Hero Elementary
- 11:30 am Xavier Riddle and the Secret Museum
- 12:00 pm Daniel Tiger's Neighborhood
- 12:30 pm Rosie's Rules
- 1:00 pm Sesame Street
- 1:30 pm Work It Out Wombats!**
- 2:00 pm Donkey Hodie
- 2:30 pm Pinkalicious & Peterrific
- 3:00 pm Elinor Wonders Why
- 3:30 pm Nature Cat
- 4:00 pm Hero Elementary
- 4:30 pm Xavier Riddle and the Secret Museum
- 5:00 pm Sesame Street
- 5:30 pm Daniel Tiger's Neighborhood
- 6:00 pm Molly of Denali
- 6:30 pm Clifford The Big Red Dog
- 7:00 pm Super Why!
- 7:30 pm Wordgirl
- 8:00 pm Arthur
- 8:30 pm Odd Squad

SATURDAYS

- 5:00 am Molly of Denali
- 5:30 am Mister Rogers
- 6:00 am Wild Kratts
- 6:30 am Curious George
- 7:00 am Work It Out Wombats!**
- 7:30 am Daniel Tiger's Neighborhood
- 8:00 am Sesame Street
- 8:30 am Rosie's Rules
- 9:00 am Donkey Hodie
- 9:30 am Pinkalicious & Peterrific
- 10:00 am Dinosaur Train
- 10:30 am Cyberchase
- 11:00 am Let's Go Luna!
- 11:30 am Alma's Way
- 12:00 pm Sesame Street
- 12:30 pm Daniel Tiger's Neighborhood
- 1:00 pm Mister Rogers
- 1:30 pm Arthur
- 2:00 pm Donkey Hodie
- 2:30 pm Curious Crew
- 3:00 pm Molly of Denali
- 3:30 pm Wild Kratts
- 4:00 pm Albie's Elevator
- 4:30 pm Work It Out Wombats!**
- 5:00 pm Sesame Street
- 5:30 pm Daniel Tiger's Neighborhood
- 6:00 pm Rosie's Rules
- 6:30 pm Pinkalicious & Peterrific
- 7:00 pm Dinosaur Train
- 7:30 pm Cyberchase
- 8:00 pm Arthur
- 8:30 pm Mister Rogers

SUNDAYS

- 5:00 am Molly of Denali
- 5:30 am Mister Rogers
- 6:00 am Wild Kratts
- 6:30 am Curious George
- 7:00 am Work It Out Wombats!**
- 7:30 am Daniel Tiger's Neighborhood
- 8:00 am Sesame Street
- 8:30 am Rosie's Rules
- 9:00 am Donkey Hodie
- 9:30 am Pinkalicious & Peterrific
- 10:00 am Dinosaur Train
- 10:30 am Cyberchase
- 11:00 am Let's Go Luna!
- 11:30 am Alma's Way
- 12:00 pm Sesame Street
- 12:30 pm Daniel Tiger's Neighborhood
- 1:00 pm Mister Rogers
- 1:30 pm Arthur
- 2:00 pm Donkey Hodie
- 2:30 pm Curious Crew
- 3:00 pm Molly of Denali
- 3:30 pm Wild Kratts
- 4:00 pm Albie's Elevator
- 4:30 pm Work It Out Wombats!**
- 5:00 pm Sesame Street
- 5:30 pm Daniel Tiger's Neighborhood
- 6:00 pm Rosie's Rules
- 6:30 pm Pinkalicious & Peterrific
- 7:00 pm Dinosaur Train
- 7:30 pm Cyberchase
- 8:00 pm Arthur
- 8:30 pm Mister Rogers



Channel 3-1

SATURDAYS

- 5:00 am Mister Rogers
- 5:30 am Arthur
- 6:00 am Molly of Denali
- 6:30 am Alma's Way
- 7:00 am Wild Kratts
- 7:30 am Curious George
- 8:00 am Work It Out Wombats!**
- 8:30 am Daniel Tiger's Neighborhood
- 9:00 am Sesame Street
- 9:30 am Rosie's Rules
- 10:00 am Donkey Hodie
- 10:30 am Pinkalicious & Peterrific

SUNDAYS

- 5:00 am Mister Rogers
- 5:30 am Arthur
- 6:00 am Molly of Denali
- 6:30 am Alma's Way
- 7:00 am Wild Kratts
- 7:30 am Curious George
- 8:00 am Work It Out Wombats!**
- 8:30 am Daniel Tiger's Neighborhood
- 9:00 am Sesame Street
- 9:30 am Rosie's Rules
- 10:00 am Donkey Hodie
- 10:30 am Pinkalicious & Peterrific

KENW-FM Radio Week at-a-Glance

KENW-FM, Portales, NM, 89.5 MHz — KMTH-FM, Maljamar, NM, 98.7 MHz — KENM-FM, Tucumcari, NM, 88.9 MHz — KENU-FM, Des Moines, NM, 88.5 MHz — KENG-FM, Ruidoso, NM, 88.5 MHz — KENE-FM, Raton, NM, 88.1 MHz — KNMJ-FM, Eunice, NM, 100.9 MHz

Translators: Apache Springs, 90.9 MHz; Clayton, 93.5 MHz; Des Moines, 106.1MHz; Ft.Sumner,91.7MHz; Las Vegas, 88.1 MHz; Roswell, 91.1 MHz; Wagon Mound, 92.1 MH

	Sunday	Monday	Tuesday	Wednesday	Thursday	Friday	Saturday	Monday through Friday
5:00	Travel with Rick Steves	Morning Edition	Morning Edition	Morning Edition		Morning Edition	5:00 a.m. People's Pharmacy	Weather: 5:18, 6:18, and 7:18 a.m. Regional News: 5:33, 6:33, and 7:33 a.m. 5:06 & 7:06 Innovation Now 5:42 & 7:42 Loh Down on Science 5:49 & 7:49 Melinda's Garden Moment 6:06 Climate Connections 6:42 Science Update 6:49 90 Second Naturalist 8:01 Marketplace Report 8:15 Animal Airwaves (MWF) Kindness Moment (Tu, Th) Nature Notes (Tu) Travelers in the Night (W) A Southwest Spotlight (F) Health in a Heartbeat 8:30 Insight 8:45 Weather/News 9:00 Marketplace Tech Report 9:30 Disability Awareness 9:45 EarthDate 10:00 Weather/News/Regional News 10:15 Engines of Our Ingenuity 10:30 Composers' Datebook 10:45 Author's Corner 11:00 Weather/News 11:15 Melinda's Garden Moment 11:30 The Plant Detective 11:45 Climate Connections 12:00 Weather/News/Regional News 12:30 Today in Rock & Roll History 12:35 Great Arts at Eastern (Th) 12:45 People's Pharmacy News (M) Poetry Now (T) Dumb Ideas (W) Medical Discoveries News (Th) Science and the Sea (F) 1:00 Weather/News 1:06 Asian View 1:15 Sound Beat 1:30 Loh Down on Science 1:20 A Southwest Spotlight (W) 1:45 StarDate 2:00 Weather/News/Regional News 2:15 Bird Note 2:30 The American Storyteller 2:45 90 Second Naturalist / Innovation Now 4:20 Earthdate 4:50 & 5:50 p.m. Weather 5:20 The Plant Detective 6:57 StarDate/Weather 9:00 Weather/News 12:00 & 3:00 a.m. Weather/News
6:00	Weekend Edition						6:00 a.m. Weekend Edition	
7:00							8:00 a.m. Planet Money & How I Built This	
8:00	With Heart and Voice	Music	Music	Music	Music	Music	9:00 a.m. Wait, Wait... Don't Tell Me	
9:00	Footlight Parade						10:00 a.m. Bioneers	
10:00	Radiolab						10:30 a.m. New Letters	
11:00	Fresh Air Weekend with Terry Gross						11:00 a.m. Opera	
12:00	People's Pharmacy (R)						2:30 p.m. Nothing Funny About Money (when length of opera permits)	
1:00	This American Life						3:00 p.m. Classical Guitar Alive	
2:00	Freakonomics						4:00 p.m. WoodSongs	
3:00	Mountain Stage	3:00 p.m. Report from Santa Fe	Best of Knowledge	51 Percent	With Good Reason	2:30 pm A Way With Words	5:00 p.m. E-Town	
3:30		Marketplace	Marketplace	Marketplace	Marketplace	Marketplace		
4:00		All Things Considered	All Things Considered	All Things Considered	All Things Considered	All Things Considered		
4:30								
5:00	Thistle & Shamrock	PBS NewsHour	PBS NewsHour	PBS NewsHour	PBS NewsHour	PBS NewsHour	All Things Considered	
6:00	All Things Considered						Swingin' Down the Lane	
7:00	Chamber Music Lincoln Center						Jazz Night in America	
8:00	Santa Fe Chamber Music	Performance Today	Performance Today	Performance Today	Performance Today	Performance Today	Jazz at 100	
9:00	The Romantic Hours						DreamFarm Radio	
10:00	Performance Today						Classical Music Out of the Night until 5:00 a.m. when People's Pharmacy begins.	
11:00	Classical Music Out of the Night until 5:00 a.m.	Classical Music Out of the Night until 5:00 a.m.	Classical Music Out of the Night until 5:00 a.m.	Classical Music Out of the Night until 5:00 a.m.	Classical Music Out of the Night until 5:00 a.m.	Classical Music Out of the Night until 5:00 a.m.	Classical Music Out of the Night until 5:00 a.m. when People's Pharmacy begins.	

The Q2-3 Program Guide (Cue to 3) is published each month by the Broadcast Center, a non-profit public service division of Eastern New Mexico University.

The guide is available to friends contributing \$35 per year or more to the support of public broadcasting. Senior Citizen and Student memberships are available for \$25. All contributions are tax deductible. Donations should be made payable to Friends of KENW-TV or to Friends of KENW-FM.

Telephone: (575) 562-2112. Toll-free 1-888-FOR-KENW (367-5369). Fax: (575) 562-2590

Mailing Address:

KENW-TV/FM

52 Broadcast Center, ENMU

1500 South Avenue K

Portales, NM 88130

Website:www.kenw.org

E-Mail: kenwtv@enmu.edu kenwfm@enmu.edu

Eastern New Mexico University is an affirmative action and equal opportunity employer. The University does not discriminate on the basis of race, color, national origin, religion, sex (including pregnancy, gender identity, and sexual orientation), age, disability, genetic information, veteran status, or any other protected status in its programs, activities, or employment. People seeking additional information about the University's non-discrimination policy should contact the Affirmative Action Officer at Station 9.

KENW-TV/FM
Eastern New Mexico
University



Native America Season Two

Building on the success of the first season, this four-part Native directed series reveals the beauty and power of today's Indigenous world. Smashing stereotypes, it follows the brilliant engineers, bold politicians, and cutting-edge artists who draw upon Native tradition to build a better 21st century.

Each hour reveals a core tenet of Native heritage: the power of Indigenous design, how language and artistry fuel the soul, the diverse ways that Native women lead, and the resilience of the warrior spirit.

Tue 8pm begins 24th (3-2)

Tue 7pm begins 24th (3-1)

Saturday 28th

- 6:00 3-2 Report from Santa Fe
- 3-1 Antiques Roadshow
- 6:30 3-2 America's Heartland
- 7:00 3-2 Lawrence Welk Show
- "Halloween Party"
- 3-1 Great Performances
- "New York City Ballet in Madrid"
- 8:00 3-2 Curious Traveler "Lucerne"
- 8:30 3-2 Red Green Show "Firefly Project"
- 3-1 Tales of Madness
- 9:00 3-2 Austin City Limits "Margo Price"
- 3-1 Caverns Sessions
- 3-3 Lawrence Welk Show
- 9:30 3-1 Taco Mafia
- 10:00 3-2 Nova "Ancient Earth: Inferno"
- 3-1 Austin City Limits
- 3-3 Classic Gospel
- 11:00 3-2 Nature "Spy in the Ocean:
- Deep Thinkers, Pt. 1
- 3-1 Nova "Ancient Earth: Inferno"
- 3-3 Woodsongs
- 12:00 3-2 Austin City Limits "Margo Price"
- 3-1 Nature "Spy in the Ocean"
- 3-3 Song of the Mountains

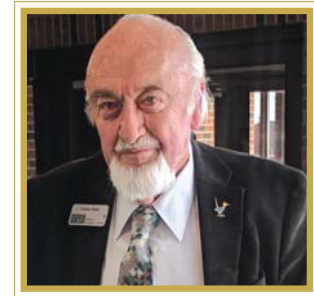
Sunday 29th

- 6:00 3-2 Secrets of the Dead
- "Eiffel's Race to the Top"
- 3-1 Hotel Portofino, Pt. 3
- 7:00 3-2 Hotel Portofino
- "Comings Together," Pt. 3
- 3-1 Masterpiece "World on Fire"
- 8:00 3-2 Masterpiece "World on Fire," Pt. 3
- 3-1 Masterpiece "Annika"
- 9:00 3-2 Masterpiece "Annika," Pt. 3
- 3-1 Marriage, Pt. 4
- 3-3 Daytripper
- 9:30 3-3 America's Heartland
- 10:00 3-2 Marriage, Pt. 4
- 3-1 POV "Aurora's Sunrise"
- 3-3 This Old House
- 10:30 3-3 Ask This Old House

Our KENW Staff

BROADCAST CENTER

Founding Director
Duane W. Ryan
Director of Broadcasting
Porfirio Delgado
Accountant
Crystal Sawyer
Business Associate
Julissa Joyal
Engineering Director
Porfirio Delgado
Engineers
Michael Chandler
Jason Murphy
Lawrence Thompson



Duane W. Ryan
Founding Director

KENW-TV STAFF

Programming Director
Sean Moore
Operations Director
Justin Robertson
**Programming/
Operations Assistant**
Kim Choate
Master Control Operator, TV
David Asplund
Doris Blandford
Wade Martin
Administrative Assistant
Erika Chavez
**Development/Promotion
Director**
Rena Garrett
Producer/Director, TV
Allan Crawford
Pablito Herrera
Programming Associate
Linda Stefanovic
Editorial Assistant
Wanda Newberry

KENW-FM STAFF

News Director, FM
Tim Gutierrez
Development Director, FM
Evelyn Ledbetter
Operations Director, FM
Shannon Hearn
Audio Engineer
Mickey Morgan
Administrative Assistant
Suzanne West

ENMU

President/System Chancellor
Dr. James Johnston
Vice President for Academic Affairs
Dr. Jamie Laurenz
Vice President for Academic Support
Mr. Justin Liles (Interim)
Chief Financial Officer
Mr. Tony Major
Vice President for Student Affairs
Dr. Jeffrey Long

- 11:00 3-2 Finding Your Roots
- 3-3 Motorweek
- 11:30 3-1 POV Shorts "Dream of a Horse"
- 3-3 Texas Parks and Wildlife
- 12:00 3-2 Nova "Ancient Earth: Inferno"
- 3-1 Masterpiece "World on Fire," Pt. 3
- 3-3 Nature "Spy in the Ocean"

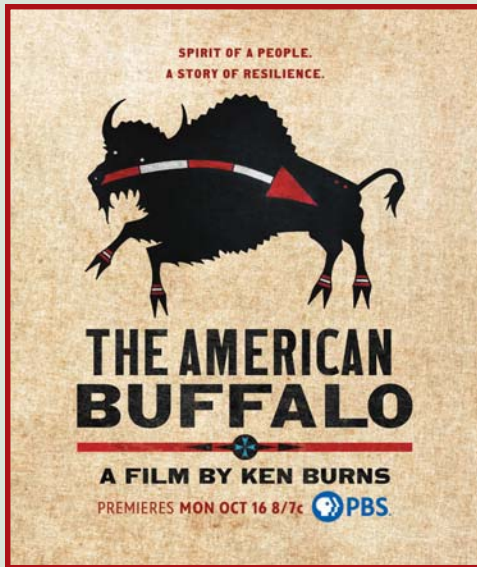
- 12:00 3-2 PBS NewsHour
- 3-1 POV "Fire Through Dry Grass"
- 3-3 Chef's Life

Tuesday 31st

- 6:00 3-2 PBS NewsHour
- 3-1 PBS NewsHour
- 7:00 3-2 Finding Your Root "Anchorman"
- 3-1 Native America, Pt. 2
- 8:00 3-2 Native America "Warrior Spirit," Pt. 2
- 3-1 Things that Go Bump in the Night
- 9:00 3-2 You Should Know
- 3-1 Finding Your Roots
- 3-3 Antiques Roadshow
- 9:30 3-2 Creative Living
- 10:00 3-2 Frontline "McConnell, the GOP and the Court"
- 3-1 Amanpour and Company
- 3-3 History Detectives
- 11:00 3-2 Amanpour and Company
- 3-1 PBS NewsHour
- 3-3 Nature "Spy in the Ocean"
- 12:00 3-2 PBS NewsHour
- 3-1 Frontline
- 3-3 America's Heartland

Monday 30th

- 6:00 3-2 PBS NewsHour
- 3-1 PBS NewsHour
- 7:00 3-2 Antiques Roadshow
- 3-1 American Experience
- 8:00 3-2 American Experience
- "The War on Disco"
- 3-1 First Avenue: Closer to the Stars
- 9:00 3-2 POV "Fire Through Dry Grass"
- 3-1 Antiques Roadshow
- 3-3 Hotel Portofino, Pt. 3
- 10:00 3-1 Amanpour and Company
- 3-3 Masterpiece "World on Fire"
- 10:30 3-2 Texas Parks and Wildlife
- 11:00 3-2 Antiques Roadshow
- 3-1 PBS NewsHour
- 3-3 Masterpiece "Annika, Pt. 3



In just over a decade the number of bison in America collapsed from 12-15 million to fewer than a thousand, representing one of the most dramatic examples of our ability to destroy the natural world.

Both parts of the larger narrative are filled with unforgettable stories and people, including Old Lady Horse, a Kiowa woman who describes her tribe's spiritual and practical relationship with the bison, and Charles Jesse "Buffalo" Jones, a mercenary hunter who took part in the elimination of 3 million buffalo, then turned to rescuing motherless calves and starting a small herd that would eventually provide seed stock for others. The editorials of the crusading conservationist George Bird Grinnell explore how central Yellowstone National Park's small herd became to the survival of the species.

Ken Burns **The American Buffalo** is the biography of an improbable, shaggy beast that has found itself at the center of many of the country's most mythic and heartbreaking tales. The two-part, four-hour film takes viewers on a journey through more than 10,000 years of North American history and across some of the continent's most iconic landscapes, tracing the mammal's evolution, its significance to the Great Plains and, most importantly, its relationship to the Indigenous People of North America.

For thousands of generations, buffalo have evolved alongside Indigenous people who relied on them for food and shelter, and, in exchange for killing them, revered the animal. The stories of Native people anchor the series, including the Kiowa, Comanche and Cheyenne of the Southern Plains; the Pawnee of the Central Plains; the Lakota and Crow from the Northern Plains; and others.

The film documents the startling swiftness of the species' near extinction in the late 19th century. Numbering an estimated 30 million in the early 1800s, the herds began declining for a variety of reasons, including the lucrative buffalo robe trade, the steady westward settlement of an expanding United States, diseases introduced by domestic cattle and drought. But the arrival of the railroads in the early 1870s and a new demand for buffalo hides to be used in the belts driving industrial machines back East brought thousands of hide hunters to the Great Plains.

By 1900, the American buffalo teetered on the brink of disappearing forever, and the Native people of the Plains entered one of the most traumatic moments of their existence. But the other, lesser-known part of this story, told in the film's second episode, is about the people who set out to save the species from extermination and how they did it.

The buffalo were brought back from the brink of extinction by a diverse and unlikely collection of Americans, such as Native American families on reservations in South Dakota and Montana, the legendary cattleman Charles Goodnight and his wife Molly in the Texas Panhandle, and Austin Corbin, the Long Island railroad magnate who owned an exotic game preserve in New Hampshire. There was also Ernest Harold Baynes, an eccentric nature writer, who trained a pair of young bison bulls to pull a wagon and took them on tour to help launch a national movement to save the species.

Other, more famous champions of the movement included William "Buffalo Bill" Cody and Theodore Roosevelt, who hurried west as an impulsive young man to shoot a bison before they were all gone, and then, as president of the United States, created the first federal bison reserves in the West. The film also introduces Quanah Parker, the Comanche leader who went from waging war against the U.S. Army and the hide hunters to a man of peace, who lived to see the buffalo return to his homeland.



"Buffalo Chase with Bows and Lances"
by George Catlin, 1832-1833

Today, there are approximately 350,000 buffalo in the U.S., most of them descendants of 77 animals from five founding herds at the start of the 20th century, and their numbers are increasing.

Mon 16th & 17th 7pm (3-2)
Sun 22nd & 29th 1pm (3-2)
Mon 16th & 17th 8pm (3-1)