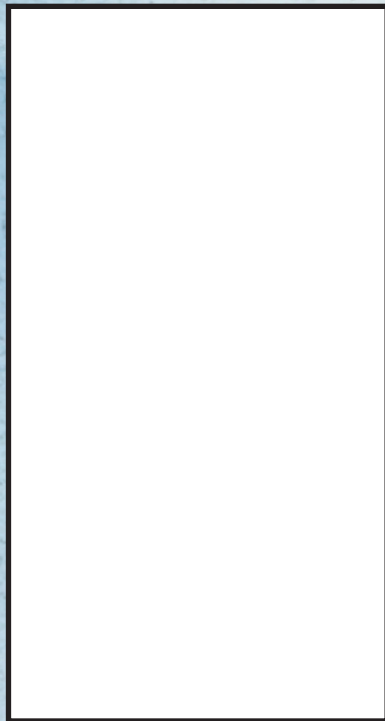


Non-Profit Org.
US Postage
PAID
Slate Group

kenw
PBS **MP**
Eastern New Mexico
University
1500 S. Avenue K
Portales, NM 88130



Program Guide KENW-TV/FM
Eastern New Mexico University
July 2026

Q2•3



DR. JOHNSTON & EVELYN
EVERY MONDAY AND WEDNESDAY
AROUND 8:10 AM



ENMU Weekly Calendar with Dr. Johnston keeps listeners informed about upcoming events, announcements, and activities taking place across Eastern New Mexico University. Hosted by ENMU President Dr. Johnston and Evelyn, the program offers a convenient weekly snapshot of campus life and opportunities for students, faculty, staff, and the broader community.

KENW FM 89.5 Radio:
Mondays & Wednesdays
approximately 8:10 AM

Become a partner with KENW-FM and support your local radio station by sponsoring **Dumb Ideas That Changed the World.**

Through the financial support of community partners, you help keep public media programming available across eastern New Mexico and west Texas.

You also support KENW's efforts to educate future broadcast and journalism students who are completing their degrees at ENMU.



TV

KENW-TV/FM
Scan QR code to donate!
Thank You for Your Support!



FM

Primetime

Wednesday 1st

- 6:00 3-2 **PBS News Hour**
3-1 *PBS News Hour*
- 7:00 3-2 **Nova "Athens: Birth of Democracy"**
3-1 *Acequias: The Legacy Lives On*
- 8:00 3-2 **Nova "Revolutionary War Weapons"**
3-1 *The Kimberley: Australia's Wild West "Into the Fire" Pt. 3*
- 9:00 3-2 **The Kimberley: Australia's Wild West "Into the Fire" Pt. 3**
3-1 *Nova "Athens: Birth of Democracy"*
3-3 *Baking with Julia*
- 9:30 3-3 *This Old House*
- 10:00 3-2 **Medical Frontiers**
3-1 *Amanpour and Company*
3-3 *Finding Your Roots*
- 10:30 3-2 **This Old House**
- 11:00 3-2 **Amanpour and Company**
3-1 *PBS News Hour*
3-3 *Lucy Worsley Investigates: The American Revolution Pt. 2*
- 12:00 3-2 **PBS News Hour**
3-1 *Nova "Revolutionary War Weapons"*
3-3 *Curious Worlds: The Art & Imagination of David Beck*

Thursday 2nd

- 6:00 3-2 **PBS News Hour**
3-1 *PBS News Hour*
- 7:00 3-2 **Frontline "The Crown Prince & The President"**
3-1 *Radio Bristol's Pt. 3*
- 8:00 3-1 *Bright Lights Little City*
- 8:30 3-2 **Caverns Sessions "Headhunters"**
3-1 *You Should Know*
- 9:00 3-2 **You Should Know**
3-1 *Cultura*
3-3 *Baking with Julia*
- 9:30 3-2 **Bands of Enchantment "Los 33 + JD Nash and the Rash of Cash"**
3-1 *Adventure Cities "Scottsdale, Arizona and Montreal, Canada"*
3-3 *This Old House*
- 10:00 3-2 **Recorded Live at Analog "Dave Stewart Does Dylan"**
3-1 *Amanpour and Company*
3-3 *Nova*
- 11:00 3-2 **Amanpour and Company**
3-1 *PBS News Hour*
3-3 *Nova*
- 12:00 3-2 **PBS News Hour**
3-1 *Laura Flanders & Friends*
3-3 *The Kimberley: Australia's Wild West Pt. 3*

Friday 3rd

- 6:00 3-2 **PBS News Hour**
3-1 *PBS News Hour*
- 7:00 3-2 **Market to Market**
3-1 *Washington Week*
- 7:30 3-2 **Gzero World**
3-1 *Firing Line*
- 8:00 3-2 **Washington Week**
3-1 *Nova "Revolutionary War Weapons"*
- 8:30 3-2 **Firing Line**
- 9:00 3-2 **American Revolution "In Order to be Free"**
3-1 *Frontline "The Crown Prince & The President"*
3-3 *Baking with Julia*
- 9:30 3-3 *This Old House*
- 10:00 3-3 *American Woodshop*
- 10:30 3-1 *Amanpour and Company*
3-3 *Woodsmith Shop*
- 11:00 3-2 **Road to Liberty Through Their Eye**
3-3 *Joy of Painting*
- 11:30 3-1 *PBS News Hour*
3-3 *Painting and Travel*
- 12:00 3-2 **PBS News Hour**
3-3 *Joy of Painting with Wilson Bickford*

Saturday 4th

- 6:00 3-2 **Report from Santa Fe**
3-1 *America Made in Virginia: 250 Years Together*
- 6:30 3-2 **American Revolution: An Inside Look**
- 7:00 3-2 **America Made in Virginia: 250 Years Together**
- 8:00 3-1 *American Revolution "The Times That Try Men's Souls"*
- 9:00 3-2 **America Made in Virginia: 250 Years Together**
3-3 *Unlikely Union: A Storytelling of America*
- 10:00 3-1 *American Revolution "Conquer by a Drawn Game"*
- 11:00 3-2 **Nova "Athens: Birth of Democracy"**
3-3 *Woodsongs*
- 12:00 3-2 **Austin City Limits "Avett Brothers"**
3-1 *Nova "Athens: Birth of Democracy"*
3-3 *Song of the Mountains*

Sunday 5th

- 6:00 3-2 **Iconic America "Cowboy"**
3-1 *Patience "Timetable" Pt. 4*
- 7:00 3-2 **Patience "Timetable" Pt. 4**
3-1 *Masterpiece "Grantchester" Pt. 4*
- 8:00 3-2 **Masterpiece "Grantchester" Pt. 4**
3-1 *Masterpiece "Downton Abbey" Pt. 4*
- 9:00 3-2 **Masterpiece "Downton Abbey" Pt. 4**
3-1 *Capitol Fourth: 250th Weekend Celebration*
3-3 *Antiques Roadshow*
- 10:00 3-2 **Unlikely Union: A Storytelling Symphony of America**
3-3 *This Old House*
- 10:30 3-1 *Bands of Enchantment "Making Movies"*
3-3 *Ask This Old House*
- 11:00 3-1 *Road to Liberty Through Their Eyes*
3-3 *Motorweek*
- 12:00 3-2 **Nova "Revolutionary War Weapons"**
11:30 3-3 *Texas Parks and Wildlife*
12:00 3-1 *Patience "Timetable" Pt. 4*
3-3 *America's Heartland*

Monday 6th

- 6:00 3-2 **PBS News Hour**
3-1 *PBS News Hour*
- 7:00 3-2 **Antiques Roadshow "Springs Preserve"**
3-1 *Unlikely Union: A Storytelling of America*
- 8:00 3-2 **Antiques Roadshow "Living History Farms"**

- 9:00 3-2 **Independent Lens "True North: Canadian Myths and Black Power"**
3-1 *Antiques Roadshow "Springs Preserve"*
3-3 *Baking with Julia*
- 9:30 3-3 *This Old House*
- 10:00 3-1 *Amanpour and Company*
3-3 *Patience Pt. 4*
- 10:30 3-2 **Texas Parks and Wildlife**
- 11:00 3-2 **Antiques Roadshow "Springs Preserve"**
3-1 *PBS News Hour*
3-3 *Masterpiece "Grantchester" Pt. 4*
- 12:00 3-2 **PBS News Hour**
3-1 *Independent Lens "True North: Canadian Myths and Black Power"*
3-3 *Masterpiece "Downton Abbey" Pt. 4*

Tuesday 7th

- 6:00 3-2 **PBS News Hour**
3-1 *PBS News Hour*
- 7:00 3-2 **Finding Your Roots "Joe Manganiello/Tony Gonzalez"**
3-1 *Independent Lens "True North: Canadian Myths and Black Power"*
- 8:00 3-2 **Breaking the Deadlock "How to Fix an Election"**
- 8:30 3-1 *Sacred Ground with Tim Daly "Riders on the Storm: A Glass Half Full"*
- 9:00 3-2 **8 Days: To the Moon and Back**
3-1 *Finding Your Roots "Joe Manganiello/Tony Gonzalez"*
3-3 *Baking with Julia*
- 9:30 3-3 *This Old House*

AMERICA
MADE IN
VIRGINIA

VA250

A star-filled tribute to America's Semiquincentennial from revolutionary Colonial Williamsburg. Featuring live performance, historic interpretation, large-scale spectacle and fireworks. This is the place where the path to independence truly began.

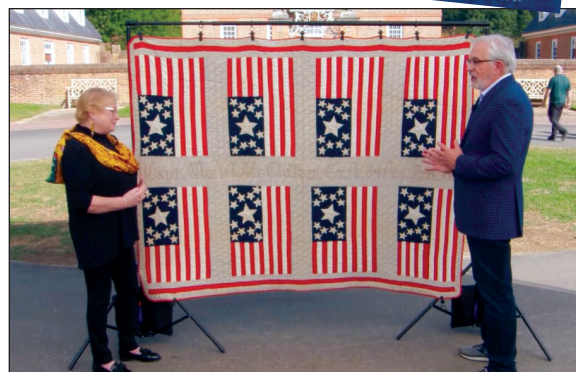
Sat 4th 6 PM (3-1)

Sat 4th 7 PM, 9 PM (3-2)

ANTIQUES ROADSHOW

Antiques Roadshow celebrates America's semiquincentennial with 250 Years of Americana, a special edition featuring discoveries that reflect 250 years of American history. Part adventure, part history lesson, and part treasure hunt, the program brings together remarkable objects, personal stories, and expert insight to reveal the fascinating truths behind family treasures, historic keepsakes, and one-of-a-kind finds. Presentation of **Antiques Roadshow** on KENW PBS New Mexico is made possible, in part, by Security State Bank.

Sun 5th 7 AM (3-2)



- 10:00 3-1 *Amanpour and Company*
3-3 *Antiques Roadshow*
- 10:30 3-2 **Before America**
- 11:00 3-2 **Amanpour and Company**
3-1 *PBS News Hour*
3-3 *Antiques Roadshow*
- 12:00 3-2 **PBS News Hour**
3-1 *Breaking the Deadlock*
"How to Fix an Election"
3-3 *Ancient Skies Pt. 2*

Wednesday 8th

- 6:00 3-2 **PBS News Hour**
3-1 *PBS News Hour*
- 7:00 3-2 **Nature "Niagara Falls"**
3-1 *8 Days: To the Moon and Back*
- 8:00 3-2 **Nova "Black Hole Apocalypse"**
8:30 3-1 *Insecta: Science that Stings*
- 9:00 3-2 **American Southwest**
3-1 *Nature "Niagara Falls"*
3-3 *Baking with Julia*
- 9:30 3-3 *This Old House*
- 10:00 3-2 **Medical Frontiers**
3-1 *Amanpour and Company*
3-3 *Finding Your Roots*
- 10:30 3-2 **This Old House**
- 11:00 3-2 **Amanpour and Company**
3-1 *PBS News Hour*
3-3 *Breaking the Deadlock*
- 12:00 3-2 **PBS News Hour**
3-1 *Nova "Black Hole Apocalypse"*
3-3 *Liberty of Conscience: The Founding of Maryland*

Thursday 9th

- 6:00 3-2 **PBS News Hour**
3-1 *PBS News Hour*
- 7:00 3-2 **Capturing America: Carol Highsmith Story**
3-1 *Radio Bristol's Pt. 4*
- 8:00 3-2 **Radio Bristol's Pt. 3**
3-1 *Bands of Enchantment*
"Making Movies"
- 8:30 3-1 *You Should Know*
- 9:00 3-2 **You Should Know**
3-1 *Before America*
3-3 *Baking with Julia*
- 9:30 3-2 **Bands of Enchantment "Griffin William Sherry"**
3-1 *Adventure Cities "La Paz, Mexico and Lafayette, Louis"*
3-3 *This Old House*
- 10:00 3-2 **Recorded Live at Analog "Molly Tuttle & Ketch Secor"**
3-1 *Amanpour and Company*
3-3 *Nature*

- 11:00 3-2 **Amanpour and Company**
3-1 *PBS News Hour*
3-3 *Nova*
- 12:00 3-2 **PBS News Hour**
3-1 *Laura Flanders & Friends*
3-3 *American Southwest*

Friday 10th

- 6:00 3-2 **PBS News Hour**
3-1 *PBS News Hour*
- 7:00 3-2 **Market to Market**
3-1 *Washington Week*
- 7:30 3-2 **Gzero World**
3-1 *Firing Line*
- 8:00 3-2 **Washington Week**
3-1 *Nova "Black Hole Apocalypse"*
- 8:30 3-2 **Firing Line**
- 9:00 3-2 **American Experience "JFK" Pt. 1**
3-1 *Breaking the Deadlock*
"How to Fix an Election"
3-3 *Baking with Julia*
- 9:30 3-3 *This Old House*
- 10:00 3-1 *Amanpour and Company*
3-3 *American Woodshop*
- 10:30 3-3 *Woodsmith Shop*
- 11:00 3-2 **First Lady "That White House" Pt. 1**
3-1 *PBS News Hour*
3-3 *Joy of Painting*
- 11:30 3-3 *Painting and Travel*
- 12:00 3-2 **PBS News Hour**
3-1 *Balancing Act with John Katko*
3-3 *Painting with Wilson Bickford*

Saturday 11th

- 6:00 3-2 **Report from Santa Fe**
3-1 *Antiques Roadshow*
"Springs Preserve"
- 6:30 3-2 **America's Heartland**
- 7:00 3-2 **Lawrence Welk Show "Caribbean Cruise"**
3-1 *American Southwest*
- 8:00 3-2 **Curious Traveler "Curious Antarctica"**
3-1 *Capturing America: The Carol Highsmith Story*
- 8:30 3-2 **Red Green Show "Outside"**
- 9:00 3-2 **Austin City Limits "Samara Joy"**
3-1 *Texas Monthly Presents: The Story "A New Lens"*
3-3 *Lawrence Welk Show*
- 9:30 3-1 *Bands of Enchantment*
"Making Movies"
- 10:00 3-2 **Nova "Black Hole Apocalypse"**
3-1 *Austin City Limits "Samara Joy"*
3-3 *Classic Gospel*

- 11:00 3-2 **Nature "Niagara Falls"**
3-1 *Nova "Black Hole Apocalypse"*
3-3 *Woodsongs*
- 12:00 3-2 **Austin City Limits "Samara Joy"**
3-1 *Nature "Niagara Falls"*
3-3 *Song of the Mountains*

Sunday 12th

- 6:00 3-2 **Iconic America "Statue of Liberty"**
3-1 *Patience "The Runes" Pt. 5*
- 7:00 3-2 **Patience "The Runes" Pt. 5**
3-1 *Masterpiece "Grantchester" Pt. 5*
- 8:00 3-2 **Masterpiece "Grantchester" Pt. 5**
3-1 *Masterpiece "Downton Abbey" Pt. 5*
- 9:00 3-2 **Masterpiece "Downton Abbey" Pt. 5**
3-1 *Rick Steves Best of London*
3-3 *Antiques Roadshow*
- 10:00 3-2 **Rick Steves Best of London**
3-1 *Rick Steves' Europe*
"Krakow: Poland's Historic Capital"
3-3 *This Old House*
- 10:30 3-1 *Bands of Enchantment*
"Southern Avenue"
3-3 *Ask This Old House*
- 11:00 3-2 **Finding Your Roots "Joe Manganiello/Tony Gonzalez"**
3-1 *First Lady "That White House" Pt. 1*
3-3 *Motorweek*
- 11:30 3-3 *Texas Parks and Wildlife*
- 12:00 3-2 **Nova "Black Hole Apocalypse"**
3-1 *Patience "The Runes" Pt. 5*
3-3 *America's Heartland*

Monday 13th

- 6:00 3-2 **PBS News Hour**
3-1 *PBS News Hour*
- 7:00 3-2 **Antiques Roadshow "Living History Farms"**
3-1 *American Experience "JFK" Pt. 1*
- 8:00 3-2 **Antiques Roadshow "Living History Farms"**
- 9:00 3-2 **Independent Lens "Flood"**
3-1 *Antiques Roadshow*
"Living History Farms"
3-3 *Baking with Julia*
- 9:30 3-3 *This Old House*
- 10:00 3-1 *Amanpour and Company*
3-3 *Patience Pt. 5*
- 10:30 3-2 **Texas Parks and Wildlife**
- 11:00 3-2 **Antiques Roadshow "Living History Farms"**
3-1 *PBS News Hour*
3-3 *Masterpiece "Grantchester" Pt. 5*
- 12:00 3-2 **PBS News Hour**
3-1 *Independent Lens "Flood"*
3-3 *Masterpiece "Downton Abbey" Pt. 5*

Tuesday 14th

- 6:00 3-2 **PBS News Hour**
3-1 *PBS News Hour*
- 7:00 3-2 **Finding Your Roots "Billy Crudup/Tamara Mowry-Housley"**
3-1 *Independent Lens "Flood"*
- 8:00 3-2 **Once Upon a Time in Space "America First" Pt. 1**
- 8:30 3-1 *Sacred Ground with Tim Daly*
"Concrete Canyons: Rewilding the City"
- 9:00 3-2 **Reel South "Night in West Texas" Pt. 1**
3-1 *Finding Your Roots*
"Billy Crudup/Tamara Mowry-Housley"
3-3 *Baking with Julia*
- 9:30 3-3 *This Old House*
- 10:00 3-2 **Breakthrough: The Ideas that Changed the World "Airplane"**
3-1 *Amanpour and Company*
3-3 *Antiques Roadshow*
- 11:00 3-2 **Amanpour and Company**
3-1 *PBS News Hour*
3-3 *Antiques Roadshow*
- 12:00 3-2 **PBS News Hour**
3-1 *Reel South "Night in West Texas" Pt. 1*
3-3 *Ancient Skies Pt. 3*



A Capitol Fourth: 250th Weekend Celebration kicks off America's birthday! Broadcasting from the West Lawn of the U.S. Capitol Building, with all-star musical performances including the debut of country music icon Trace Adkin's new song "American Made," and spectacular fireworks from Mount Vernon, the home of George Washington.

Sun 5th 2 PM (3-2)
Sun 5th 9 PM (3-1)

Wednesday 15th

- 6:00 3-2 **PBS News Hour**
3-1 *PBS News Hour*
- 7:00 3-2 **Nature "Soul of the Ocean"**
3-1 *Once Upon a Time in Space "America First" Pt. 1*
- 8:00 3-2 **Nova "Black Hole Universe"**
3-1 *Bugs that Rule the World "Insect Apocalypse" Pt. 1*
- 9:00 3-2 **Bugs that Rule the World "Insect Apocalypse" Pt. 1**
3-1 *Nature "Soul of the Ocean"*
3-3 *Baking with Julia*
3-3 *This Old House*
- 9:30 3-3 *This Old House*
- 10:00 3-2 **Medical Frontiers**
3-1 *Amanpour and Company*
3-3 *Finding Your Roots*
- 10:30 3-2 **This Old House**
- 11:00 3-2 **Amanpour and Company**
3-1 *PBS News Hour*
3-3 *Once Upon a Time in Space Pt. 1*
- 12:00 3-2 **PBS News Hour**
3-1 *Nova "Black Hole Universe"*
3-3 *Legacy of 4-H*

Thursday 16th

- 6:00 3-2 **PBS News Hour**
3-1 *PBS News Hour*
- 7:00 3-2 **America the Bountiful: America's 250th Anniversary Special**
3-1 *Radio Bristol's Pt. 5*
- 8:00 3-2 **Radio Bristol's Pt. 4**
3-1 *Bands of Enchantment "Southern Avenue"*
- 8:30 3-1 *You Should Know*



Cultura on KENW PBS is a nationally syndicated series that celebrates the history, culture, and spirit of New Mexico. Narrated by Pablito Herrera and directed and produced by Pablito Herrera, the program takes viewers across the Land of Enchantment through powerful storytelling, stunning landscapes, and rich cultural traditions. From Indigenous and Spanish history to Chicano communities, music, food, and art, **Cultura** highlights the people and stories that continue to shape New Mexico's identity. More than a television series, **Cultura** serves as a tribute to the heritage, beauty, and future of the Southwest.

Sundays 12th, 26th

12 PM (3-2)

Thursdays 2nd, 16th, 30th

9 PM (3-1)

Sundays 12th, 26th

11:30 AM (3-1)

- 9:00 3-2 **You Should Know**
3-1 *Cultura*
3-3 *Baking with Julia*
- 9:30 3-2 **Bands of Enchantment "Violet Rising + Crime Lab"**
3-1 *Adventure Cities "Lexington, Kentucky and Whistler, Canada"*
3-3 *This Old House*
- 10:00 3-2 **Recorded Live at Analog "Chase Rice"**
3-1 *Amanpour and Company*
3-3 *Nature*
- 11:00 3-2 **Amanpour and Company**
3-1 *PBS News Hour*
3-3 *Nova*
- 12:00 3-2 **PBS News Hour**
3-1 *Laura Flanders & Friends*
3-3 *Bugs that Rule the World Pt. 1*

Friday 17th

- 6:00 3-2 **PBS News Hour**
3-1 *PBS News Hour*
- 7:00 3-2 **Market to Market**
3-1 *Washington Week*
- 7:30 3-2 **Gzero World**
3-1 *Firing Line*
- 8:00 3-2 **Washington Week**
3-1 *Nova "Black Hole Universe"*
- 8:30 3-2 **Firing Line**
- 9:00 3-2 **American Experience "JFK" Pt. 2**
3-1 *Reel South "Night in West Texas" Pt. 1*
3-3 *Baking with Julia*
- 9:30 3-3 *This Old House*
- 10:00 3-1 *Amanpour and Company*
3-3 *American Woodshop*
- 10:30 3-3 *Woodsmith Shop*
- 11:00 3-2 **First Lady "Voices Carry" Pt. 2**
3-1 *PBS News Hour*
3-3 *Joy of Painting*
- 11:30 3-3 *Painting and Travel*
- 12:00 3-2 **PBS News Hour**
3-1 *Balancing Act with John Katko*
3-3 *Painting with Wilson Bickford*

Saturday 18th

- 6:00 3-2 **Report from Santa Fe**
3-1 *Antiques Roadshow "Living History Farms"*
- 6:30 3-2 **America's Heartland**
- 7:00 3-2 **Lawrence Welk Show "Tribute to Irving Berlin"**
3-1 *Breakthrough: The Ideas that Changed the World "Airplane"*
- 8:00 3-2 **Curious Traveler "Curious Alhambra & Malaga, Spain"**
3-1 *America the Bountiful: America's 250th Anniversary Special*
- 8:30 3-2 **Red Green Show "Town Mall"**
- 9:00 3-2 **Austin City Limits "ACL Celebrates Antone's & The Blues"**
3-1 *Texas Monthly Presents: The Story "Legacy"*
3-3 *Lawrence Welk Show Bands of Enchantment "Southern Avenue"*
- 9:30 3-1 *Southern Avenue*
- 10:00 3-2 **Nova "Black Hole Universe"**
3-1 *Austin City Limits "ACL Celebrates Antone's & The Blues"*
3-3 *Classic Gospel*
- 11:00 3-2 **Nature "Soul of the Ocean"**
3-1 *Nova "Black Hole Universe"*
3-3 *Woodsongs*
- 12:00 3-2 **Austin City Limits "ACL Celebrates Antone's & The Blues"**
3-1 *Nature "Soul of the Ocean"*
3-3 *Song of the Mountains*

Sunday 19th

- 6:00 3-2 **Iconic America "The American Bald Eagle"**
3-1 *Patience "Paco's Revenge" Pt. 6*
- 7:00 3-2 **Patience "Paco's Revenge" Pt. 6**
3-1 *Masterpiece "Grantchester" Pt. 6*



Looking for a short, entertaining segment to complement your programming? Join Jeff Gentry on **Dumb Ideas that Changed the World**. Produced by KENW-FM. This weekly show features blunders by influential people who should have known better. We don't let airheads lead us into the abyss. Epic folly only happens when we trust the right people at the wrong time. These aren't worthless theories that were quickly discarded. We expose brain cramps that wielded influence, like the static theory of cosmology, the misnamed Red Delicious apple, and the stupidity of dueling. But some dumb ideas aren't so dumb after all. Australia's Barry Marshall was a medical-research pariah for years. His dumb idea was golden, proving that

most peptic ulcers are caused by treatable bacteria. Through careful research and accessible language, Gentry's listeners feel smarter than many of history's so-called experts. Even humanities nerds and science geeks will encounter dumb ideas they've never heard of. We uncover stupidity so you don't have to! Discover **Dumb Ideas That Changed the World** and feel better about your own cognitive function!

Questions: Email Jeff.Gentry@enmu.edu

Download episodes at PRX: Just google "Dumb Ideas Show PRX"

Become a partner with KENW-FM and support your local radio station by sponsoring **Dumb Ideas That Changed the World**. Through the financial support of community partners, you help keep public media programming available across eastern New Mexico and west Texas. You also support KENW's efforts to educate future broadcast and journalism students who are completing their degrees at ENMU.

KENW FM 89.5 Radio:
Wednesdays 12:45 PM
Fridays 8:25 AM

KENW-TV SCHEDULES 3-1 (HD), 3-2 (HD) AND 3-3 (SD)

KENW-TV considers Channel 3-2 to be its "main" channel and is listed below in bold. Channel 3-2 is carried by most TV cable systems in eastern New Mexico, along with the streaming platforms - Hulu + Live TV, LocalNow, the PBS app and YouTube TV.

Schedule 3-1 can be seen on the HD services of some cable companies. 3-1 is also carried by DirecTV and Dish Networks in most New Mexico counties. 3-3 is our Children's/Encore Channel (SD) and can only be seen over the air with an antenna.

3-4 is our FNX Channel (First Nations Experience) and is available at <https://fnx.org/schedule/>.

Those using antennas can receive all four channels in the following cities: Clovis/Portales; Hobbs/Lovington; Roswell; Artesia; Ft. Sumner; Tucumcari; Carlsbad; Ruidoso; Mescalero. KENW-TV digital transmitters are located in Artesia; Carlsbad; Ft. Sumner; Hobbs; Portales/Clovis; Roswell; Tucumcari; Ruidoso; and Mescalero.

- 8:00 **3-2 Masterpiece "Grantchester" Pt. 6**
3-1 Masterpiece "Downton Abbey" Pt. 6
- 9:00 **3-2 Masterpiece "Downton Abbey" Pt. 6**
3-3 Antiques Roadshow
- 10:00 3-1 Rick Steves' Europe
"Poland's Warsaw and Gdansk"
3-3 This Old House
- 10:30 3-1 Bands of Enchantment
"Carlos Medina/Micah Thunder"
3-3 Ask This Old House
- 11:00 **3-2 Finding Your Roots "Billy Crudup/
Tamara Mowry-Housley"**
3-1 First Lady "That White House" Pt. 2
3-3 Motorweek
- 11:30 3-3 Texas Parks and Wildlife
- 12:00 **3-2 Nova "Black Hole Universe"**
3-1 Patience "Paco's Revenge" Pt. 6
3-3 America's Heartland

Monday 20th

- 6:00 **3-2 PBS News Hour**
3-1 PBS News Hour
- 7:00 **3-2 Antiques Roadshow "Denver Botanic
Gardens Chatfield Farms"**
3-1 American Experience "JFK" Pt. 2
- 8:00 **3-2 Antiques Roadshow "Denver Botanic
Gardens Chatfield Farms"**

- 9:00 **3-2 POV "Dating Game"**
3-1 Antiques Roadshow "Denver Botanic
Gardens Chatfield Farms"
3-3 Baking with Julia
- 9:30 3-3 This Old House
- 10:00 3-1 Amanpour and Company
3-3 Patience Pt. 6
- 10:30 **3-2 Texas Parks and Wildlife**
- 11:00 **3-2 Antiques Roadshow "Denver Botanic
Gardens Chatfield Farms"**
3-1 PBS News Hour
3-3 Masterpiece "Grantchester" Pt. 6
- 12:00 **3-2 PBS News Hour**
3-1 POV "Dating Game"
3-3 Masterpiece "Downton Abbey" Pt. 6

Tuesday 21st

- 6:00 **3-2 PBS News Hour**
3-1 PBS News Hour
- 7:00 **3-2 Finding Your Roots
"Liza Colon-Zayas/Delroy Lindo"**
3-1 POV "Dating Game"
- 8:00 **3-2 Once Upon a Time in Space
"Russian Thing" Pt. 2**
- 8:30 3-1 Sacred Ground with Tim Daly
"Last Supper: Seeds of Change"

- 9:00 **3-2 Reel South "Louder Than Guns" Pt. 2**
3-1 Finding Your Roots
"Liza Colon-Zayas/Delroy Lindo"
3-3 Baking with Julia
- 9:30 3-3 This Old House
- 10:00 **3-2 Breakthrough: The Ideas
that Changed the World "Telescope"**
3-1 Amanpour and Company
3-3 Antiques Roadshow
- 11:00 **3-2 Amanpour and Company**
3-1 PBS News Hour
3-3 Antiques Roadshow
- 12:00 **3-2 PBS News Hour**
3-1 Reel South "Louder Than Guns" Pt. 2
3-3 Iconic America

Wednesday 22nd

- 6:00 **3-2 PBS News Hour**
3-1 PBS News Hour
- 7:00 **3-2 Nature "Big Little Journeys: Home"**
3-1 Once Upon a Time in Space
"Russian Thing" Pt. 2



Central Texas Gardener

Central Texas Gardener inspires viewers with practical ideas for creating beautiful, sustainable outdoor spaces. From water-wise plants and native landscapes to organic gardening techniques and creative design solutions, the program helps gardeners of all experience levels make the most of their yards, patios, and green spaces. Presentation of **Central Texas Gardener** on KENW PBS New Mexico is made possible, in part, by a grant from Valley Mower Clinic, Inc, in Clovis, New Mexico.

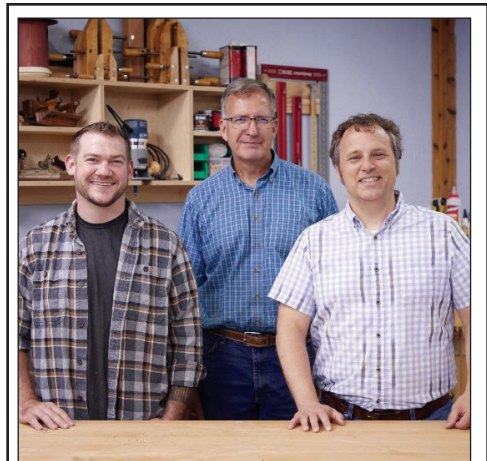
Mondays 10 AM (3-1)



An Iowa farm thrives despite the untimely loss of the family patriarch, carrying on his legacy as one of the state's few Black-owned farms. A Vermont couple finds new ways to better protect their land from drought and floods. A Georgia farm keeps the produce coming year-round by planting and harvesting in three different locations. Soybeans may soon be part of the asphalt beneath you. All on this episode of **America's Heartland**. Presentation of **America's Heartland** is made brought to you in part by Chaves County Farm & Livestock Bureau, Friends of the Living Desert, and New Mexico Department of Agriculture.

Sat 11th 6:30 PM (3-2)

Fri 3rd 6 AM (3-1)



Woodsmith SHOP

Each program is designed to be an information-packed presentation of woodworking furniture projects, along with the tips & techniques to build them. Roundtable discussions explore a wide range of woodworking topics to help you set up and enjoy spending time in your woodworking shop. Whether you are just starting out, or have been woodworking for years, you'll find something new in every episode.

Sat 29th 6 AM (3-2)

Wednesdays 10:30 AM (3-1)

3-2 Daytime

KENW-TV, Channel 3-4, Schedule for FNX available at fnx.org/schedule.

WEEKDAYS

- 1:00 am Classic Arts Showcase (4-1/2 hrs.)
- 5:30 am Wai Lana Yoga
- 6:00 am Classical Stretch
- 6:30 am BBC World News
- 7:00 am–11:00 am PBS Kids (M-Th, See page 9)
- 7:00 am–12:00 noon PBS Kids (Friday only)
- 11:00 am Cook's Country (M)
 - America's Test Kitchen (Tu)
 - Key Ingredients (W, ends 22nd)
 - Kevin Belton's New Orleans (W, begins 29th)
 - Sara's Weeknight Meals (Th)
- 11:30 am Pati's Mexican Table (M)
 - Fit 2 Stitch (Tu)
 - School of Greatness (W)
 - Christina Cooks (Th)
- 12:00 pm Sit and Be Fit (MWF)
 - Creative Living (TuTh)
- 12:30 pm J. Schwanke's Life in Bloom (M)
 - Follow the Blooms (Tu)
 - Fons & Porter's Love of Quilting (W)
 - Welcome to My Studio (Th)
 - Painting and Travel (F)
- 1:00 pm–4:30 pm PBS Kids (See page 9)
- 4:30 pm Gzero World (M)
 - Kitchen Curious (Tu, ends 21st)
 - Dook Chase: A Chef's Journey (Tu, begins 28th)
 - Jazzy Vegetarian (W)
 - Journeys In Japan (Th)
 - Balancing Act (F)
- 5:00 pm Washington Week (M)
 - Food. Curated. (Tu)
 - Joseph Rosendo's Steppin' Out (W)
 - Start Up (Th)
 - Grown Up Dad (F, ends 3rd)
 - Sacred Ground (F, begins 10th)
- 5:30 pm BBC World News America

SATURDAYS

- 1:00 am Classic Arts Showcase (5 hrs.)
- 6:00 am Papa Ray's Vintage
 - Vinyl Records (ends 18th)
 - Woodsmith Shop (begins 25th)
- 6:30 am Texas Parks & Wildlife
- 7:00 am Texas Monthly Presents: The Story
- 7:30 am Cook's Country
- 8:00 am American Revolution Pt. 2 (2 hrs, 4th only)
 - America's Test Kitchen (returns 11th)
- 8:30 am Lucky Chow
- 9:00 am Milk Street
- 9:30 am Motorweek
- 10:00 am American Revolution Pt. 3 (2 hrs, 4th only)
 - Garden Smart (returns 11th)
- 10:30 am J. Schwanke's Life in Bloom
- 11:00 am Eric En Plein Air
- 11:30 am Joy of Painting
- 12:00 pm American Revolution Pt. 4 (2 hrs, 4th only)
 - Painting and Travel (returns 11th)
- 12:30 pm Quilt in a Day
- 1:00 pm Quilting Arts
- 1:30 pm Fons & Porter's Love of Quilting
- 2:00 pm American Revolution Pt. 5 (2 hrs, 4th only)
 - Creative Living (returns 11th)
- 2:30 pm Jazzy Vegetarian
- 3:00 pm Indian as Apple Pie (ends 11th)
 - Steven Raichlen's Project Fire (begins 18th)
- 3:30 pm This Old House
- 4:00 pm American Revolution Pt. 6 (2 hrs, 4th only)
 - Ask This Old House (returns 11th)
- 4:30 pm Joy of Painting Nicholas Hankins
- 5:00 pm Sewing with Nancy
- 5:30 pm Fit 2 Stitch

SUNDAYS

- 1:00 am Classic Arts Showcase (5 hrs.)
- 6:00 am Painting and Travel
- 6:30 am Samantha Brown Places to Love
- 7:00 am Antiques Roadshow
- 8:00 am Classic Gospel
- 9:00 am Joy of Music
- 9:30 am Music and the Spoken Word
- 10:00 am Liberty of Conscience (5th)
 - Legacy of 4-H (12th)
 - America the Bountiful (19th)
 - Frederick Law Olmsted (26th)
- 11:00 am New Mexico in Focus
- 12:00 pm Pati's Mexican Table (5th, 19th)
 - Cultura (12th & 26th)
- 12:30 pm Texas Parks & Wildlife
- 1:00 pm Texas Monthly Present
- 1:30 pm Closer to Truth's Global Philosophy of Religion
- 2:00 pm Capitol 4th: 250th Celebration (5th only)
 - War That Made America (returns 12th)
- 3:00 pm Medical Stories (12th)
 - Recipe for Wellness (begins 19th)
- 3:30 pm Medical Frontiers
- 4:00 pm Classic Gospel
- 5:00 pm You Should Know
- 5:30 pm Museum Access

- 8:00 3-2 **Nova "Chasing Pluto"**
- 3-1 *Bugs that Rule the World "Lifegivers" Pt. 2*
- 9:00 3-2 **Bugs that Rule the World "Lifegivers" Pt. 2**
- 3-1 *Nature "Big Little Journeys: Home"*
- 3-3 *Baking with Julia*
- 9:30 3-3 *This Old House*
- 10:00 3-2 **Medical Frontiers**
- 3-1 *Amanpour and Company*
- 3-3 *Finding Your Roots*
- 10:30 3-2 **This Old House**
- 11:00 3-2 **Amanpour and Company**
- 3-1 *PBS News Hour*
- 3-3 *Once Upon a Time in Space Pt. 2*
- 12:00 3-2 **PBS News Hour**
- 3-1 *Nova "Chasing Pluto"*
- 3-3 *America the Bountiful: America's 250th Anniversary Special*

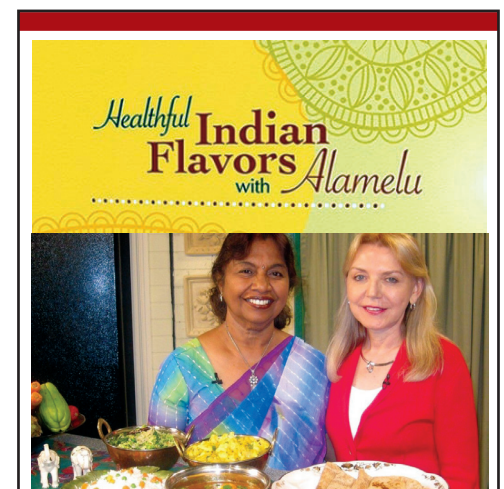
Thursday 23rd

- 6:00 3-2 **PBS News Hour**
- 3-1 *PBS News Hour*
- 7:00 3-2 **Frederick Law Olmsted: Designing America**
- 3-1 *Radio Bristol's Pt. 6*
- 8:00 3-2 **Radio Bristol's Pt. 5**
- 3-1 *Bands of Enchantment "Carlos Medina/Micah Thunder"*

- 8:30 3-1 *You Should Know*
- 9:00 3-2 **You Should Know**
- 3-1 *Flying Tails*
- 3-3 *Baking with Julia*
- 9:30 3-2 **Bands of Enchantment "Annie Dirusso"**
- 3-1 *Adventure Cities "Costa Rica"*
- 3-3 *This Old House*
- 10:00 3-2 **Recorded Live at Analog "George Thorogood & The Destroyers"**
- 3-1 *Amanpour and Company*
- 3-3 *Nature*
- 11:00 3-2 **Amanpour and Company**
- 3-1 *PBS News Hour*
- 3-3 *Nova*
- 12:00 3-2 **PBS News Hour**
- 3-1 *Laura Flanders & Friends*
- 3-3 *Bugs that Rule the World Pt. 2*

Friday 24th

- 6:00 3-2 **PBS News Hour**
- 3-1 *PBS News Hour*
- 7:00 3-2 **Market to Market**
- 3-1 *Washington Week*
- 7:30 3-2 **Gzero World**
- 3-1 *Firing Line*
- 8:00 3-2 **Washington Week**
- 3-1 *Nova "Chasing Pluto"*
- 8:30 3-2 **Firing Line**



This episode of **Healthful Indian flavors with Alamelu**, Alamelu will prepare a mouthwatering Shrimp in Eggplant Sauce, along with a versatile Potato Masala enhanced with onions, tomatoes, and cilantro, she will also blend yogurt with spinach to create a refreshing Seasoned Spinach in Yogurt salad. Show Recipes: Shrimp in Eggplant Sauce; Potato Masala; Seasoned Fresh Spinach in Yogurt. This episode will air July 21st on channel 3-1, at 10:30 AM. Catch all episodes of **Healthful Indian flavors with Alamelu** every Tuesday at 10:30 AM on channel 3-1!

Tue 21st 10:30 AM (3-1)

3-1 Daytime

MONDAYS

1:00 am Classic Arts Showcase (4 hrs.)
5:00 am Classical Stretch
5:30 am Happy Yoga
6:00 am New Mexico in Focus
7:00 am Burt Wolf: Travels & Traditions
7:30 am Curious Traveler
8:00 am Rick Steves' Europe
8:30 am Jacques Pepin: Heart & Soul
9:00 am Pati's Mexican Table
9:30 am Kevin Belton's New Orleans
10:00 am Central Texas Gardener
10:30 am Jazzy Vegetarian
11:00 am Classical Stretch
11:30 am Sit and Be Fit
12:00 pm Patience Pts. 4-7
1:00 pm Masterpiece "Grantchester" Pts. 4-7
2:00 pm Masterpiece "Downton Abbey"
(2 hrs 20th & 27th)
3:00 pm Travels with Darley (except 20th & 27th)
3:30 pm Museum Access
4:00 pm America's Heartland
4:30 pm Daytripper
5:00 pm Texas Parks and Wildlife
5:30 pm BBC World News America

TUESDAYS

1:00 am Classic Arts Showcase (4 hrs.)
5:00 am Classical Stretch
5:30 am Happy Yoga
6:00 am Antiques Roadshow
7:00 am Kitchen Curious
7:30 am Travel Detective (ends 21st)
In the Americas (begins 28th)
8:00 am Closer to Truth
8:30 am Healthy Minds
9:00 am School of Greatness
9:30 am Recipe for Wellness
10:00 am Wider World
10:30 am Healthful Indian Flavors
11:00 am Classical Stretch
11:30 am Happy Yoga
12:00 pm Christina Cooks
12:30 pm Life of Loi (ends 21st)
My Greek Table (begins 28th)
1:00 pm Welcome to My Farm
1:30 pm Taste of History
2:00 pm Antiques Roadshow
3:00 pm Antiques Roadshow
4:00 pm Opportunity Knocks
4:30 pm Start Up
5:00 pm Firing Line
5:30 pm BBC World News America

WEDNESDAYS

1:00 am Classic Arts Showcase (4 hrs.)
5:00 am Classical Stretch
5:30 am Happy Yoga
6:00 am Books By the River
6:30 am Start Up
7:00 am Travels with Darley
7:30 am Museum Access
8:00 am This Old House
8:30 am Ask This Old House
9:00 am Welcome to My Farm
9:30 am J. Schwanke's Life in Bloom
10:00 am American Woodshop
10:30 am Woodsmith Shop
11:00 am Classical Stretch
11:30 am Sit and Be Fit
12:00 pm Sara's Weeknight Meals
12:30 pm Cook's Country
1:00 pm Steven Raichlen's Project Fire
1:30 pm Tim Farmer's Country Kitchen
2:00 pm Great American Recipe (ends 1st)
Food. Curated. (begins 8th)
2:30 pm Outdoor Eats (begins 8th)
3:00 pm Finding Your Roots
4:00 pm Lidia's Kitchen
4:30 pm America's Test Kitchen
5:00 pm Story in the Public Square
5:30 pm BBC World News America

THURSDAYS

1:00 am Classic Arts Showcase (4 hrs.)
5:00 am Classical Stretch
5:30 am Happy Yoga
6:00 am Story in the Public Square
6:30 am Overheard with Evan Smith
7:00 am Texas Parks & Wildlife
7:30 am Outdoor Eats
8:00 am Les Stroud's Wild Harvest
8:30 am Taste of History
9:00 am Fons & Porters Love of Quilting
9:30 am Quilting Arts
10:00 am Quilt in a Day
10:30 am Fit 2 Stitch
11:00 am Classical Stretch
11:30 am Happy Yoga
12:00 pm Milk Street
12:30 pm Lucky Chow
1:00 pm Son of a Butcher
1:30 pm Jacques Pepin: Heart & Soul
2:00 pm Nature
3:00 pm The Kimberley: Australia's Wild West
American Southwest
Bugs that Rule the World (begins 16th)
4:00 pm Nova
5:00 pm Texas Monthly Presents
5:30 pm BBC World News America

FRIDAYS

1:00 am Classic Arts Showcase (4 hrs.)
5:00 am Classical Stretch
5:30 am Yoga in Practice
6:00 am America's Heartland
6:30 am Garden Smart
7:00 am Song of the Mountains
8:00 am Life of a Musician
8:30 am Woodsongs Kids
Songs at the Center
9:00 am Radio Bristol's Farm and Fun Time
10:00 am Joy of Painting
10:30 am Painting and Travel
11:00 am Classical Stretch
11:30 am Sit and Be Fit
12:00 pm This Old House
12:30 pm Ask This Old House
1:00 pm Joy of Painting with Nicholas Hankins
1:30 pm Sewing with Nancy
2:00 pm Chef's Life
2:30 pm Weekends with Yankee
3:00 pm Samantha Brown's Places to Love
3:30 pm Kitchen Curious
4:00 pm Generations: California @250 (ends 24th)
View Finders (Begins 31st)
4:30 pm Gzero World with Ian Bremmer
5:00 pm Balancing Act with John Katko
5:30 pm BBC World News America

SATURDAYS

11:00 am Kevin Belton's New Orleans
11:30 am Pati's Mexican Table
12:00 pm This Old House
12:30 pm This Old House
1:00 pm American Revolution Pt. 1 (2 hrs, 4th)
Ask This Old House (returns 11th)
1:30 pm Motorweek
2:00 pm Painting with Wilson
2:30 pm Steven Raichlen's Planet BBQ
3:00 pm American Revolution Pt. 2 (2 hrs, 4th)
America's Test Kitchen (returns 11th)
3:30 pm Cook's Country
4:00 pm Nature
5:00 pm American Revolution: An Inside Look (4th)
Horizons from PBS News (returns 11th)
5:30 pm Report from Santa Fe

SUNDAYS

11:00 am Washington Week
11:30 am Before America (5th)
Cultura (12th & 26th)
Training for Freedom (19th)
12:00 pm New Mexico in Focus
1:00 pm You Should Know
1:30 pm Market to Market
2:00 pm American Revolution (2 hrs, 5th)
Garden Smart (returns 12th)
2:30 pm J. Schwanke Life in Bloom
3:00 pm War That Made America
4:00 pm American Revolution (2 hrs, 5th)
Nova (returns 12th)
5:00 pm Compass Points from PBS News
5:30 pm Closer to Truth



PBS

- 9:00 3-2 **American Experience**
"Chasing the Moon" Pt. 1
- 3-1 Reel South "Louder Than Guns" Pt. 2
- 3-3 Baking with Julia
- 9:30 3-3 This Old House
- 10:00 3-1 Amanpour and Company
- 3-3 American Woodshop
- 10:30 3-3 Woodsmith Shop
- 11:00 3-2 **First Lady "Please Allow Me" Pt. 3**
- 3-1 PBS News Hour
- 3-3 Joy of Painting
- 11:30 3-3 Painting and Travel
- 12:00 3-2 **PBS News Hour**
- 3-1 Balancing Act with John Katko
- 3-3 Painting with Wilson Bickford

Saturday 25th

- 6:00 3-2 **Report from Santa Fe**
- 3-1 Antiques Roadshow "Denver Botanic Gardens Chatfield Farms"
- 6:30 3-2 **America's Heartland**
- 7:00 3-2 **Lawrence Welk Show**
"Grammy Award Songs"
- 3-1 Breakthrough: The Ideas that Changed the World "Telescope"
- 8:00 3-2 **Curious Traveler**
"Curious Marrakech, Morocco"
- 3-1 Frederick Law Olmsted: Designing America
- 8:30 3-2 **Red Green Show "Winter Carnival"**
- 9:00 3-2 **Austin City Limits**
"Charley Crockett/Waxahatchee"
- 3-1 Texas Monthly Presents: The Story "Back to the Roots"
- 3-3 Lawrence Welk Show
- 9:30 3-1 Bands of Enchantment
"Carlos Medina/Micah Thunder"
- 10:00 3-2 **Nova "Chasing Pluto"**
- 3-1 Austin City Limits
"Charley Crockett/Waxahatchee"
- 3-3 Classic Gospel
- 11:00 3-2 **Nature "Big Little Journeys: Home"**
- 3-1 Nova "Chasing Pluto"
- 3-3 Woodsongs
- 12:00 3-2 **Austin City Limits**
"Charley Crockett/Waxahatchee"
- 3-1 Nature "Big Little Journeys: Home"
- 3-3 Song of the Mountains

Sunday 26th

- 6:00 3-2 **Iconic America "Stone Mountain"**
- 3-1 Patience "A Monk's Tale" Pt. 7
- 7:00 3-2 **Patience "A Monk's Tale" Pt. 7**
- 3-1 Masterpiece "Grantchester" Pt. 7
- 8:00 3-2 **Masterpiece "Grantchester" Pt. 7**
- 3-1 Masterpiece "Downton Abbey" Pt. 7
- 9:00 3-2 **Masterpiece "Downton Abbey" Pt. 7**
- 3-3 Antiques Roadshow
- 10:00 3-1 Rick Steves' Europe "Italy's Highlights"
- 3-3 This Old House
- 10:30 3-1 Bands of Enchantment "Sara Marie Rorie/Levi Platero Band"
- 3-3 Ask This Old House
- 11:00 3-2 **Finding Your Roots**
"Liza Colon-Zayas/Delroy Lindo"
- 3-1 First Lady "Please Allow Me" Pt. 3
- 3-3 Motorweek
- 11:30 3-3 Texas Parks and Wildlife
- 12:00 3-2 **Nova "Chasing Pluto"**
- 3-1 Patience "A Monk's Tale" Pt. 7
- 3-3 America's Heartland

Monday 27th

- 6:00 3-2 **PBS News Hour**
- 3-1 PBS News Hour
- 7:00 3-2 **Antiques Roadshow "Denver Botanic Gardens Chatfield Farms"**
- 3-1 American Experience
"Chasing the Moon" Pt. 1
- 8:00 3-2 **Antiques Roadshow "Maryland Zoo"**
- 9:00 3-2 **POV "For Venida, For Kalief"**
- 3-1 Antiques Roadshow "Denver Botanic Gardens Chatfield Farms"
- 3-3 Baking with Julia

Our KENW Supporters

Please join us in thanking and supporting these businesses and organizations that help make our programming possible.

In Support of KENW-TV

- | | |
|------------------------------------------------------------------------------------------------------------------------------------------------------------------------------------------------------------------------------------------------------------------------------------------------------------------------------------------------------------------------------------------------------------------------------------------------------|-------------------------------------------------------------------------------------------------------------------------------------------------------------------------------------------------------------------------------------------------------------------------------------------------------------------------------------------------------------------------------------------------------------------------------------------------------------------------------|
| <ul style="list-style-type: none"> Anderson Bethany Funeral Home and Crematory, Roswell Chaves County Farm and Livestock Bureau, Dexter and Roswell Clovis Community College Cultural Arts Series Eastern New Mexico News, Clovis and Portales Eastern New Mexico University, Portales Farmers' Electric Cooperative, Inc. of NM, Clovis Friends of the Living Desert, Carlsbad | <ul style="list-style-type: none"> James Polk Stone Community Bank
Clovis, Eunice, Hagerman, Hobbs, Portales, Roswell, Carlsbad Kiwanis Club of Portales Living Desert Zoo & Gardens State Park, Carlsbad New Mexico Department of Agriculture Plateau, Clovis Roosevelt County Electric Cooperative Security State Bank, Farwell, TX Valley Mower Clinic, Inc., Clovis Yucca, Portales |
|------------------------------------------------------------------------------------------------------------------------------------------------------------------------------------------------------------------------------------------------------------------------------------------------------------------------------------------------------------------------------------------------------------------------------------------------------|-------------------------------------------------------------------------------------------------------------------------------------------------------------------------------------------------------------------------------------------------------------------------------------------------------------------------------------------------------------------------------------------------------------------------------------------------------------------------------|

In Support of KENW-FM

- | | |
|--------------------------------------------------------------------------------------------------------------------------------------------------------------------------------------------------------------------------------------------------------------------------------------------------------|---------------------------------------------------------------------------------------------------------------------------------------------------------------------------------------------------------------------------------------------------------------------------------------|
| <ul style="list-style-type: none"> American AgCredit Border Soil & Water District City of Carlsbad Dairy Farmers of America First Christian Church (Disciples of Christ), Carlsbad JF Maddox Foundation LifeHouse of Carlsbad | <ul style="list-style-type: none"> Loka Creative Mental Health Resources Inc. New Mexico Arts NM Economic Development NM Health Care Authority Roosevelt Soil & Water District Taco Box, Clovis and Portales |
|--------------------------------------------------------------------------------------------------------------------------------------------------------------------------------------------------------------------------------------------------------------------------------------------------------|---------------------------------------------------------------------------------------------------------------------------------------------------------------------------------------------------------------------------------------------------------------------------------------|

Call Joshua Gonzalez for TV or Evelyn Ledbetter for FM at 575 562-2112 to add your support.

Thank You for Your Support!

Tuesday 28th

- 9:30 3-3 This Old House
- 10:00 3-1 Amanpour and Company
- 3-3 Patience Pt. 7
- 10:30 3-2 **Texas Parks and Wildlife**
- 11:00 3-2 **Antiques Roadshow "Denver Botanic Gardens Chatfield Farms"**
- 3-1 PBS News Hour
- 3-3 Masterpiece "Grantchester" Pt. 7
- 12:00 3-2 **PBS News Hour**
- 3-1 POV "For Venida, For Kalief"
- 3-3 Masterpiece "Downton Abbey" Pt. 7

- 6:00 3-2 **PBS News Hour**
- 3-1 PBS News Hour
- 7:00 3-2 **Finding Your Roots**
"Lizzie Caplan/Hasan Minhaj"
- 3-1 POV "For Venida, For Kalief"
- 8:00 3-2 **Once Upon a Time in Space**
"Politics Always Wins" Pt. 3
- 8:30 3-1 Sacred Ground with Tim Daly
"Falling Trees: A Parable of Hope"



Austin City Limits continues its celebrated run with a radiant hour of live music featuring Grammy-nominated roots artists Charley Crockett and Waxahatchee. As the longest-running music series in American television history, ACL has become known for showcasing legendary performers and groundbreaking artists across genres, and this episode brings together two distinct voices helping shape the sound of modern roots music.

Texas troubadour Charley Crockett returns to the ACL stage with songs from Lonesome Drifter, blending country, blues, and road-worn storytelling. Waxahatchee, the acclaimed project of singer-songwriter Katie Crutchfield, makes her Austin City Limits debut with standout selections from Tiger's Blood, bringing a mix of Americana, indie rock, and heartfelt songwriting. Together, the two performances highlight the range, spirit, and staying power of American roots music. Austin City Limits is brought to you in part by the Eastern New Mexico News.

Sat 25th 9 PM (3-2)
Sat 25th 10 PM (3-1)

PBS KIDS

Channel 3-2

WEEKDAYS

7:00 am	Lyla in the Loop
7:30 am	Carl the Collector
8:00 am	Daniel Tiger's Neighborhood
8:30 am	Phoebe & Jay
9:00 am	Sesame Street
9:30 am	Work It Out Wombats!
10:00 am	Donkey Hodie
10:30 am	Rosie's Rules
11:00 am	Skillsville (F)
11:30 am	Mister Rogers (F)
1:00 pm	Elinor Wonders Why
1:30 pm	Alma's Way
2:00 pm	Molly of Denali
2:30 pm	Weather Hunters
3:00 pm	Wild Kratts
3:30 pm	Arthur
4:00 pm	Odd Squad



Daniel Tiger's Neighborhood

Daniel Tiger's Neighborhood stars 4-year-old Daniel Tiger, his family, and friends as they learn key skills for navigating school and life. Catchy strategy songs about learning social and emotional skills will have the whole family singing! This show for preschoolers ages 2 to 4 is inspired by the iconic Mister Rogers' Neighborhood. Presentation of Daniel Tiger's Neighborhood on KENW PBS New Mexico is made possible, in part, by a grant from Kiwanis Club of Portales.

Monday-Friday 8 AM (3-2); Saturday and Sunday 8 AM (3-1)

Channel 3-1

SATURDAYS

5:00 am	Mister Rogers
5:30 am	Arthur
6:00 am	Wild Kratts
6:30 am	Weather Hunters
7:00 am	Lyla in the Loop
7:30 am	Carl the Collector
8:00 am	Daniel Tiger's Neighborhood
8:30 am	Phoebe & Jay
9:00 am	Sesame Street
9:30 am	Work It Out Wombats!
10:00 am	Donkey Hodie
10:30 am	Rosie's Rules

SUNDAYS

5:00 am	Mister Rogers
5:30 am	Arthur
6:00 am	Wild Kratts
6:30 am	Weather Hunters
7:00 am	Lyla in the Loop
7:30 am	Carl the Collector
8:00 am	Daniel Tiger's Neighborhood
8:30 am	Phoebe & Jay
9:00 am	Sesame Street
9:30 am	Work It Out Wombats!
10:00 am	Donkey Hodie
10:30 am	Rosie's Rules

Channel 3-3

WEEKDAYS

4:00 am	Arthur
4:30 am	Odd Squad
5:00 am	Wild Kratts
5:30 am	Weather Hunters
6:00 am	Lyla in the Loop
6:30 am	Carl the Collector
7:00 am	Daniel Tiger's Neighborhood
7:30 am	Phoebe & Jay
8:00 am	Sesame Street
8:30 am	Work It Out Wombats!
9:00 am	Donkey Hodie
9:30 am	Rosie's Rules
10:00 am	Elinor Wonders Why
10:30 am	Alma's Way
11:00 am	Molly of Denali
11:30 am	Xavier Riddle & the Secret Museum
12:00 pm	Arthur
12:30 pm	Odd Squad
1:00 pm	Wild Kratts
1:30 pm	Weather Hunters
2:00 pm	Lyla in the Loop
2:30 pm	Carl the Collector
3:00 pm	Daniel Tiger's Neighborhood
3:30 pm	Phoebe & Jay
4:00 pm	Sesame Street
4:30 pm	Work It Out Wombats!
5:00 pm	Donkey Hodie
5:30 pm	Rosie's Rules
6:00 pm	Elinor Wonders Why
6:30 pm	Alma's Way
7:00 pm	Molly of Denali
7:30 pm	Weather Hunters
8:00 pm	Arthur
8:30 pm	Odd Squad

SATURDAYS

4:00 am	Mister Rogers
4:30 am	Arthur
5:00 am	Wild Kratts
5:30 am	Weather Hunters
6:00 am	Lyla in the Loop
6:30 am	Carl the Collector
7:00 am	Daniel Tiger's Neighborhood
7:30 am	Phoebe & Jay
8:00 am	Sesame Street
8:30 am	Work It Out Wombats!
9:00 am	Donkey Hodie
9:30 am	Rosie's Rules
10:00 am	Elinor Wonders Why
10:30 am	Cyberchase
11:00 am	Curious Crew
11:30 am	Mia & Codie/Vegesaurus
12:00 pm	Skillsville
12:30 pm	Mister Rogers
1:00 pm	Arthur
1:30 pm	Weather Hunters
2:00 pm	Alma's Way
2:30 pm	Lyla in the Loop
3:00 pm	Carl the Collector
3:30 pm	Daniel Tiger's Neighborhood
4:00 pm	Phoebe & Jay
4:30 pm	Sesame Street
5:00 pm	Work It Out Wombats!
5:30 pm	Donkey Hodie
6:00 pm	Rosie's Rules
6:30 pm	Alma's Way
7:00 pm	Cyberchase
7:30 pm	Wild Kratts
8:00 pm	Arthur
8:30 pm	Mister Rogers

SUNDAYS

4:00 am	Mister Rogers
4:30 am	Arthur
5:00 am	Wild Kratts
5:30 am	Weather Hunters
6:00 am	Lyla in the Loop
6:30 am	Wild Kratts
7:00 am	Daniel Tiger's Neighborhood
7:30 am	Phoebe & Jay
8:00 am	Sesame Street
8:30 am	Work It Out Wombats!
9:00 am	Donkey Hodie
9:30 am	Rosie's Rules
10:00 am	Elinor Wonders Why
10:30 am	Cyberchase
11:00 am	Curious Crew
11:30 am	Infinite Art Hunt
12:00 pm	Skillsville
12:30 pm	Mister Rogers
1:00 pm	Arthur
1:30 pm	Weather Hunters
2:00 pm	Alma's Way
2:30 pm	Lyla in the Loop
3:00 pm	Wild Kratts
3:30 pm	Daniel Tiger's Neighborhood
4:00 pm	Phoebe & Jay
4:30 pm	Sesame Street
5:00 pm	Work It Out Wombats!
5:30 pm	Donkey Hodie
6:00 pm	Rosie's Rules
6:30 pm	Alma's Way
7:00 pm	Cyberchase
7:30 pm	Wild Kratts
8:00 pm	Arthur
8:30 pm	Mister Rogers

KENW-FM Radio Week at-a-Glance

KENW-FM, Portales, NM, 89.5 MHz — KMTN-FM, Maljamar, NM, 98.7 MHz — KENM-FM, Tucumcari, NM, 88.9 MHz —
 KENU-FM, Des Moines, NM, 88.5 MHz — KENG-FM, Ruidoso, NM, 88.5 MHz — KENE-FM, Raton, NM, 88.1 MHz —
 KNMJ-FM, Eunice, NM, 100.9 MHz — KENY-FM, Wagon Mound, NM, 90.5 MHz —
 KENP-FM, Las Vegas, NM, 88.1 MHz — KENB-FM, Roswell, NM, 90.9 MHz

Translators: Apache Springs, 90.9 MHz; Clayton, 93.5 MHz; Des Moines, 106.1MHz; Ft. Sumner, 91.7MHz

	Sunday	Monday	Tuesday	Wednesday	Thursday	Friday	Saturday	Monday through Friday					
5:00	Travel with Rick Steves	Morning Edition	Morning Edition	Morning Edition	Morning Edition	Morning Edition	5:00 a.m. People's Pharmacy	Weather: 5:18, 6:18, and 7:18 a.m. Regional News: 5:33, 6:33, and 7:33 a.m. 5:06 Innovation Now 5:42 The Post Perspective 5:49 Melinda's Garden Moment 6:06 Climate Connections 6:42 Science Update 6:49 90 Second Naturalist 7:06 Innovation Now 7:42 The Post Perspective 7:49 Melinda's Garden Moment 8:10 Marketplace Report 8:15 Animal Airwaves (MWF) Kindness Moment (Tu, Th) 8:20 All About Ag (M-Th) Travelers in the Night (W) Dumb Ideas that Changed the World (F) 8:30 Health in a Heartbeat 8:45 The Story of the Writing 9:00 Weather/News 9:15 Marketplace Tech Report 9:30 Disability Awareness 9:45 EarthDate 10:00 Weather/News/Regional News Engines of Our Ingenuity 10:15 Composers' Datebook 10:45 Author's Corner 11:00 Weather/News 11:06 KENW Local News 11:15 Melinda's Garden Moment 11:30 The Plant Detective 11:45 Climate Connections 12:00 Weather/News/Regional News 12:30 Today in Rock & Roll History 12:35 Great Arts at Eastern (Th) 12:45 People's Pharmacy News (M) Poetry Now (T) Dumb Ideas (W) Medical Discoveries News (Th) Science and the Sea (F) 1:00 Weather/News 1:08 KENW Local News 1:06 Asian View 1:15 Sound Beat 1:20 A Southwest Spotlight (W) 1:30 Loh Down on Science 1:45 StarDate 2:00 Weather/News/Regional News 2:15 Bird Note 2:30 The American Storyteller 2:45 90 Second Naturalist/Innovation Now 4:20 Earthdate 4:33 Evening Regional News 4:50 Weather 5:20 The Plant Detective 5:33 Evening Regional News 5:50 Weather 6:57 StarDate/Weather 9:00 Weather/News 12:00 and 3:00 a.m. Weather/News					
6:00	Weekend Edition						8:10 a.m. ENMU Weekly Calendar 8:20 a.m. Ag Segments		8:20 a.m. Ag Segments	8:10 a.m. ENMU Weekly Calendar 8:20 a.m. Ag Segments	8:20 a.m. Ag Segments	8:20 a.m. Ag Segments	6:00 a.m. Weekend Edition
7:00													8:00 a.m. Planet Money & How I Built This
8:00	With Heart and Voice	Music News & Features	Music News & Features	Music News & Features	Music News & Features	Music News & Features	9:00 a.m. Wait, Wait... Don't Tell Me						
9:00	Footlight Parade						10:00 a.m. The Bioneers						
10:00	Radiolab						10:30 a.m. You Should Know						
11:00	Fresh Air Weekend with Terry Gross						WFMT Radio Network Opera Radio Series						
12:00	People's Pharmacy (R)												
1:00	This American Life												
2:00	Freakonomics												
3:00	Mountain Stage							2:30 p.m. Nothing Funny About Money (when length of opera permits)					
3:00							3:00 p.m. Report from Santa Fe	2:30 p.m. A Way with Words					
3:30							Marketplace	3:00 p.m. Classical Guitar Alive					
4:00		All Things Considered	4:00 p.m. WoodSongs										
4:30			5:00 p.m. E-Town										
5:00	Alt Latino	All Things Considered	PBS NewsHour	PBS NewsHour	PBS NewsHour	PBS NewsHour	All Things Considered						
5:30	All Songs Considered												
6:00	All Things Considered	Chicago Symphony Orchestra	New York Philharmonic	San Francisco Symphony ends 8th National Center for the Performing Arts in Beijing begins 15th	Collector's Corner	Concierto with Frank Dominguez Fiesta!	Swingin' Down the Lane Jazz Night in America						
7:00	The Chamber Music Society Of Lincoln Center												
8:00	Exploring Music												
9:00	The Spanish Hour	Performance Today	Performance Today	Performance Today	Performance Today	Performance Today	Jazz at 100 Dreamfarm Radio						
10:00	Performance Today												
11:00	Classical Music Out of the Night until 5:00 a.m.	Classical Music Out of the Night until 5:00 a.m.	Classical Music Out of the Night until 5:00 a.m.	Classical Music Out of the Night until 5:00 a.m.	Classical Music Out of the Night until 5:00 a.m.	Classical Music Out of the Night until 5:00 a.m.	Classical Music Out of the Night until 5:00 a.m. when Travel with Rick Steves						

The Q2-3 Program Guide (Cue to 3) is published each month by the Broadcast Center, a non-profit public service division of Eastern New Mexico University.

The guide is available to friends contributing \$35 per year or more to the support of public broadcasting. Senior Citizen and Student memberships are available for \$25. All contributions are tax deductible. Donations should be made payable to Friends of KENW-TV or to Friends of KENW-FM.

Telephone: (575) 562-2112. Toll-free 1-888-FOR-KENW (367-5369).

Fax: (575) 562-2590

Mailing Address:
 KENW-TV/FM

52 Broadcast Center, ENMU
 1500 South Avenue K
 Portales, NM 88130

Website: www.kenw.org

E-Mail: kenwtv@enmu.edu kenwfm@enmu.edu

Eastern New Mexico University is an affirmative action and equal opportunity employer. The University does not discriminate on the basis of race, color, national origin, religion, sex (including pregnancy, gender identity, and sexual orientation), age, disability, genetic information, veteran status, or any other protected status in its programs, activities, or employment. People seeking additional information about the University's non-discrimination policy should contact the Affirmative Action Officer at Station 9.

KENW-TV/FM
Eastern New Mexico
University

Opera News
Saturdays, 11:00 am
On FM Radio

The Metropolitan Opera

July 4
Aida
Giuseppe Verdi

July 11
The Makropulos Affair
Leoš Janáček

July 18
Boris Godunov
Modest Mussorgsky

July 25
The Marriage of Figaro
Wolfgang Amadeus Mozart

- 9:00 3-2 **Reel South "Drowned Land" Pt. 3**
3-1 *Finding Your Roots*
"Lizzie Caplan/Hasan Minhaj"
3-3 *Baking with Julia*
- 9:30 3-3 *This Old House*
- 10:00 3-2 **Breakthrough: The Ideas that Changed the World "Rocket"**
3-1 *Amanpour and Company*
3-3 *Antiques Roadshow*
- 11:00 3-2 **Amanpour and Company**
3-1 *PBS News Hour*
3-3 *Antiques Roadshow*
- 12:00 3-2 **PBS News Hour**
3-1 *Reel South "Drowned Land" Pt. 3*
3-3 *Iconic America*

Wednesday 29th

- 6:00 3-2 **PBS News Hour**
3-1 *PBS News Hour*
- 7:00 3-2 **Nature**
"Big Little Journeys: Survival"
3-1 *Once Upon a Time in Space*
"Politics Always Wins" Pt. 3
- 8:00 3-2 **Nova "Pluto and Beyond"**
3-1 *Bugs that Rule the World*
"Eat OR Be Eaten" Pt. 3
- 9:00 3-2 **Bugs that Rule the World**
"Eat OR Be Eaten" Pt. 3
3-1 *Nature "Big Little Journeys: Survival"*
3-3 *Baking with Julia*
- 9:30 3-3 *This Old House*
- 10:00 3-2 **Medical Frontiers**
3-1 *Amanpour and Company*
3-3 *Finding Your Roots*
- 10:30 3-2 **This Old House**
- 11:00 3-2 **Amanpour and Company**
3-1 *PBS News Hour*
3-3 *Once Upon a Time in Space Pt. 3*
- 12:00 3-2 **PBS News Hour**
3-1 *Nova "Pluto and Beyond"*
3-3 *Frederick Law Olmsted: Designing America*



Duane W. Ryan
(1932-2023)
Founding Director

Thursday 30th

- 6:00 3-2 **PBS News Hour**
3-1 *PBS News Hour*
- 7:00 3-2 **Woody Guthrie and the Ghost of Tom Joad Today**
3-1 *Radio Bristol's Pt. 9*
- 8:00 3-2 **Radio Bristol's Pt. 6**
3-1 *Bands of Enchantment "Sara Marie Rorie/Levi Platero Band"*
- 8:30 3-1 *You Should Know*
- 9:00 3-2 **You Should Know**
3-1 *Cultura*
3-3 *Baking with Julia*
- 9:30 3-2 **Bands of Enchantment "Sgt. Splendor"**
3-1 *Adventure Cities "Alice Springs, Australia & Long Beach, California"*
3-3 *This Old House*
- 10:00 3-2 **Recorded Live at Analog "Back Home Again: Tribute to John Denver"**
3-1 *Amanpour and Company*
3-3 *Nature*
- 11:00 3-2 **Amanpour and Company**
3-1 *PBS News Hour*
3-3 *Nova*
- 12:00 3-2 **PBS News Hour**
3-1 *Laura Flanders & Friends*
3-3 *Bugs that Rule the World Pt. 3*

Friday 31st

- 6:00 3-2 **PBS News Hour**
3-1 *PBS News Hour*
- 7:00 3-2 **Market to Market**
3-1 *Washington Week*
- 7:30 3-2 **Gzero World**
3-1 *Firing Line*
- 8:00 3-2 **Washington Week**
3-1 *Nova "Pluto and Beyond"*
- 8:30 3-2 **Firing Line**
- 9:00 3-2 **American Experience**
"Chasing the Moon" Pt. 2
3-1 *Reel South "Drowned Land" Pt. 3*
3-3 *Baking with Julia*
- 9:30 3-3 *This Old House*
- 10:00 3-1 *Amanpour and Company*
3-3 *American Woodshop*
- 10:30 3-3 *Woodsmith Shop*
- 11:00 3-2 **First Lady "Cracked Pot" Pt. 4**
3-1 *PBS News Hour*
3-3 *Joy of Painting*
- 11:30 3-3 *Painting and Travel*
- 12:00 3-2 **PBS News Hour**
3-1 *Balancing Act with John Katko*
3-3 *Painting with Wilson Bickford*

OUR KENW STAFF

BROADCAST CENTER

- Founding Director
Duane W. Ryan
- Director of Broadcasting
Porfirio Delgado
- Accountant
Crystal Sawyer
- Engineering Director
Porfirio Delgado
- Engineers
Michael Chandler
John Bamforth

KENW-TV STAFF

- Administrative Assistant
Karina Hernandez
- Development/Promotions Director, TV
Joshua Gonzalez
- Editorial Assistant
Wanda Newberry
- Master Control Operator, TV
Doris Blandford
Wade Martin
Paige Gard
- Operations Director
Justin Robertson
- Producer/Director, TV
Allan Crawford
Pablito Herrera
- Production Assistant
David Asplund
- Programming Director
Sean Moore

KENW-FM STAFF

- Administrative Assistant
Suzanne West
- Audio Engineer
Mickey Morgan
- Development/Promotions Director, FM
Evelyn Ledbetter
- News and Public Affairs Director, FM
Kevin L. Robbins
- Operations Assistant, FM
Manny Martinez
- Operations Director, FM
Shannon Hearn

ENMU

- President/System Chancellor
Dr. James Johnston
- Vice President for Academic Affairs
Dr. Jamie Laurenz
- Vice President for Advancement/PR
Mr. Warren Lloyd
- Vice President for Student Affairs
Dr. Christy Johanson
- Chief Financial Officer
Mr. Tony Major
- Executive Director for System Information Technology (EDSIT)
Ms. Erin Morgan



YSK SPOTLIGHT: Andy Mason Returns Home Each Summer Through Music

For many in Eastern New Mexico and West Texas, summer wouldn't be complete without a visit from musician Andy Mason. Although he now calls France home, Mason's roots run deep in Portales, New Mexico, where he spent many years living, studying, and developing his passion for music.

A graduate of Eastern New Mexico University, Mason has built a life that spans continents while maintaining a strong connection to the community that helped shape him. Each summer, he returns to the region for four to six weeks, performing at libraries and community venues throughout Eastern New Mexico and West Texas. His annual visits have become a cherished tradition for audiences of all ages.

On this month's airing on YSK, **You Should Know**, KENW-TV/FM and TV of YSK, Mason shared stories about his journey from Portales to France,

his experiences and the importance of staying connected to the communities that influenced his life and career. His warmth, humor, and appreciation for the region were evident throughout the conversation.

In addition to the interview, viewers were treated to live performances of three songs: *I Love You, I'm So Glad I Get To Be Your Dad, Smoke & Mirrors.*

Mason's music reflects a blend of storytelling, cultural experiences, and heartfelt connection. Whether performing in a library, community center, or concert setting, he has a unique ability to engage audiences through both song and conversation.

His annual return serves as a reminder that no matter where life leads, the bonds formed through education, community, and shared experiences remain strong. For Mason, Portales and Eastern New Mexico continue to be an important part of his story, and local audiences eagerly look forward to welcoming him back each summer.

To learn more about Andy Mason and hear his music, watch this episode of YSK – **You Should Know** on KENW-TV and listen for broadcasts on KENW-FM.

KENW-TV

Sun 12th 5pm (3-2)

Thu 16th 9pm (3-2)

Sun 12th 1pm (3-1)

Thu 16th 8:30pm (3-1)

KENW-FM Radio

Sat 11th 10:30am

Wed 15th 3pm



ALL ABOUT AG

Monday-Thursday
Airing approximately at
8:20 AM

Produced by KENW FM

Sponsored By:



Summer is here, and Americans everywhere are enjoying baseball games. Agriculture is part of baseball in more ways than you might think. From the food at the ballpark to the transportation that gets you there, and even the baseball itself, American farmers and ranchers help make the game possible. Tune in this month to learn more. **All About Ag** is a KENW-FM feature focused on promoting agricultural literacy through clear, informative segments about agriculture, conservation, food production, and other related topics. A special thank you to our partners, Roosevelt Soil & Water Conservation District, Border Soil & Water Conservation District, and American AgCredit, whose partnership and financial support make this feature possible.

Monday-Thursday 8:20 AM (KENW FM 89.5 Radio)