

Q2•3

Program Guide KENW-TV/FM
Eastern New Mexico University
July 2019

SUMMER OF SPACE

When to watch from *A to Z* Channel 3-2 – July 2019

Amanpour and Company – Tuesdays–Thursdays, 11:00 p.m.
America's Heartland – Saturdays, 6:30 p.m.
America's Test Kitchen – Saturdays, 7:30 a.m.; Thursdays, 11:30 a.m.
Antiques Roadshow – Mondays, 8:00 p.m.; Mondays, 11:00 p.m.
 Sundays, 7:00 a.m.
Ask This Old House – Saturdays, 4:00 p.m.
Austin City Limits – Saturdays, 9:00 p.m./12:00 midnight
BBC World News – Weekdays, 6:30 a.m./4:30 p.m.
Beads, Baubles and Jewels – Mondays, 12:30 p.m.
Beauty of Oil Painting – Fridays, 12:30 p.m.; Saturdays, 12:00 noon
Body Electric – Weekdays, 5:30 a.m.
Classic Arts Showcase – Sundays–Saturdays, 1:00 a.m.–5:00 a.m.
Classic Gospel – Sundays, 8:00 a.m./4:00 p.m.
Classical Stretch – Weekdays, 6:00 a.m.
Classic Woodworking – Saturdays, 6:00 a.m. (ends 6th);
 Wednesdays, 11:30 a.m. (ends 24th)
Closer to Truth – Sundays, 1:30 p.m.
Consuelo Mack WealthTrack – Fridays, 7:30 p.m.
Cook's Country – Mondays, 11:00 a.m.
Craftman's Legacy – Thursdays, 11:00 a.m.
Creative Living – Tuesdays/Thursdays, 12:00 noon;
 Saturdays, 2:00 p.m.; Tuesdays, 9:30 p.m. (except 9th)
Firing Line – Fridays, 8:30 p.m.
Fishing Behind the Lines – Wednesdays, 11:00 a.m.
Focus on Europe – Fridays, 5:00 p.m.
Fons & Porter's Love of Quilting – Saturdays, 1:30 p.m.
Frontline "American Patriot" – Tuesday, 2nd 10:00 p.m.
Great British Baking Show – Saturdays, 8:30 a.m.
Healthy Body Healthy Mind – Tuesdays, 5:00 p.m.
In Focus New Mexico – Sundays, 12:30 p.m.
Islands Without Cars V – Thursdays, 5:00 p.m.
It's Sew Easy – Saturdays, 5:30 p.m.; Tuesdays, 12:30 p.m.
Jazzy Vegetarian – Saturdays, 2:30 p.m.
Joy of Music – Sundays, 9:00 a.m.
Joy of Painting – Saturdays, 11:30 a.m.
J Schwanke's Life in Bloom – Saturdays, 10:30 a.m.
Kevin Belton's New Orleans Kitchen – Saturdays, 7:00 a.m.;
 Tuesday, 11:00 a.m.
Knit and Crochet Now – Tuesdays, 11:30 a.m.;
 Saturdays, 3:00 p.m.
Lawrence Welk – Saturdays, 7:00 p.m.
Market to Market – Fridays, 7:00 p.m.
Martha Bakes – Saturdays, 8:00 a.m.; Mondays, 11:30 a.m.
Masterpiece –
 "Downton Abbey" – Sundays, 2:00 p.m.
 "Endeavour, Season 6" – Sundays, 8:00 p.m. (ends 7th);
 Fridays, 10:00 p.m. (10:30 p.m. on 12th; ends)
 "Grantchester, Season 4" – Sundays, 8:00 p.m. (begins 14th);
 Fridays, 10:00 p.m. (begins 19th)
Motorweek – Saturdays, 9:30 a.m.
Music & the Spoken Word – Sundays, 9:30 a.m.
New Mexico Colores – Sundays, 12:00 noon
Nightly Business Report – Weekdays, 5:30 p.m.
Nova – Wednesdays, 8:00 p.m.; Saturdays, 10:00 p.m.;
 Sundays, 12:00 midnight
 "Black Hole Apocalypse" – 3rd, 6th, 7th
 "Black Hole Universe" – 3rd (9:00 p.m.), 13th, 14th
 "Back to the Moon" – 10th (7:00 p.m.), 20th, 21st
 "The Planets: Inner Worlds" – 24th, 27th
 "The Planets: Mars" – 24th (9:00 p.m.), 28th
 "The Planets: Jupiter" – 31st, August 3rd, 4th
Painting and Travel – Sundays, 6:00 a.m.
Paint This with Jerry Yarnell – Saturdays, 11:00 a.m.
P. Allen Smith's Garden Home – Saturdays, 10:00 a.m.
PBS NewsHour – Weekdays, 6:00 p.m./12:00 midnight
Quilt in a Day – Saturdays, 12:30 p.m.
Quilting Arts – Saturdays, 1:00 p.m.; Wednesdays, 12:30 p.m.
Red Green Show – Thursdays, 9:30 p.m. (except 4th);
 Saturdays, 8:30 p.m.
Report from Santa Fe – Saturdays, 6:00 p.m.
Second Opinion – Wednesdays, 10:00 p.m.; Sundays, 6:30 a.m.
Sewing with Nancy – Saturdays, 5:00 p.m.

A to Z listings for 3-1 are on pages 18 & 19

Sit and Be Fit – Mondays/Wednesdays/Fridays, 12:00 noon
Song of the Mountains – Thursdays, 8:00 p.m. (except 4th)
Star Gazers – Wednesdays, 10:57 p.m.; Saturdays, 10:57 a.m./9:57 p.m.;
 Sundays 2:57 p.m./10:57 p.m.; Mondays 10:57 p.m.
Start Up – Sundays, 5:00 p.m.; Wednesdays, 5:00 p.m.
Taste of History – Mondays, 10:30 p.m.
This Old House – Saturdays, 3:30 p.m.; Wednesdays, 10:30 p.m.
Wai Lana Yoga – Weekdays, 5:00 a.m.
Washington Week – Fridays, 8:00 p.m.; Mondays, 5:00 p.m.
Welcome to My Studio – Thursdays, 12:30 p.m.; Saturdays, 4:30 p.m.
Woodsmith Shop – Saturdays, 6:30 a.m.
Wordsongs – Thursdays, 10:00 p.m. (except 4th)
You Should Know – Tuesdays, 9:00 p.m. (except 9th)

Special Programs

8 Days: To the Moon and Back – Wednesday, 17th, 8:00 p.m.
American Experience –
 "Space Men" – Tuesday, 9th, 7:00 p.m.
 "Chasing the Moon" (3 Pts., 6 Hrs.) –
 Monday–Wednesday, 8th–10th, 8:00 p.m.;
 Tuesdays, 7:00 p.m. (begins 16th)
Ancient Skies (3 Pts.) – Wednesdays, 7:00 p.m. (begins 24th);
 Saturdays, 11:00 p.m. (begins 27th)
Art of a Cowboy (13 Pts.) – Mondays, 10:00 p.m. (begins 8th);
 Thursdays, 9:00 p.m. (begins 18th)
Awakening in Taos: The Mabel Dodge Luhan Story –
 Monday, 15th, 8:00 p.m.; Sunday, 28th, 11:00 a.m.
Big Ben: Saving the World's Most Famous Clock (2 Pts.) –
 Sundays, 10:00 a.m./6:00 p.m./9:00 p.m. (begins 21st)
Capitol Fourth – Thursday, 4th, 7:00 p.m./9:00 p.m.
Civil War Songs and Stories – Sunday, 14th, 3:00 p.m.;
 Tuesday, 30th, 10:00 p.m.
Frozen North – Sir Hubert's Forgotten Submarine Expedition –
 Tuesday, 2nd, 8:00 p.m.; Sunday, 7th, 9:30 p.m.;
 Thursday, 25th, 7:00 p.m.
Garage with Steve Butler (10 Pts.) – Saturdays, 6:00 a.m. (begins 13th);
 Wednesdays, 11:30 a.m. (begins 31st)
Gettysburg Story – Monday, 1st, 8:00 p.m.; Sunday, 7th, 3:00 p.m.
Illusions in Stone (emeralds) – Sunday, 28th, 10:00 p.m.;
 Wednesday, 31st, 9:00 p.m.
Inside Balmoral (3 Pts.) – Sundays, 11:00 p.m. (begins 14th)
Jamestown, Season 3 – Sundays, 7:00 p.m. (except 14th)
Joy of AI – Tuesday, 16th, 10:00 p.m.; Thursday, 18th, 7:00 p.m.;
 Friday, 26th, 11:00 p.m.
Kingdoms of the Sky "Himalaya" – Saturday, 20th, 11:00 p.m.
Liberty & Slavery: The Paradox of America's Founding Fathers –
 Sunday, 21st, 11:00 a.m.; Thursday, 23rd, 10:00 p.m.
Life of a Universe – Sunday, 14th, 10:00 a.m./10:00 p.m.;
 Friday, 19th, 9:00 p.m.
Life on the Line "Against All Odds" – Friday, 5th, 11:30 p.m.
Notre Dame: A Witness to History – Friday, 5th, 9:00 p.m.;
 Sunday, 7th, 10:00 a.m.; Sunday, 21st, 10:00 p.m.
O! Max Evans: The First Thousand Years – Sunday, 7th, 10:30 p.m.;
 Friday, 12th, 9:00 p.m.
PBS Previews "Country Music" – Thursday, 4th, 8:30 p.m./10:30 p.m.;
 Monday, 22nd, 8:00 p.m.
P.O.V. – Mondays, 9:00 p.m.
 "Call Her Ganda" – 1st
 "Bisbee '17" – 15th
 "On Her Shoulders" – 22nd (8:30 p.m.)
P.O.V. Shorts "Earthrise" – Wednesday, 17th, 9:30 p.m.
Rise of the Superheroes (2 Hrs.) – Sunday, 14th, 6:00 p.m.;
 Monday, 29th, 8:00 p.m.
Rivers of Life –
 "Mississippi" – Wednesday, 3rd, 7:00 p.m.; Saturday, 6th, 11:00 p.m.
 "Nile" – Saturday, 13th, 11:00 p.m.
Secrets of the Dead "Galileo's Moon" – Tuesday, 2nd, 7:00 p.m.;
 Sunday, 7th, 11:00 a.m./6:00 p.m.
Shake-Up (in New Mexico) – Tuesday, 9th, 10:00 p.m.;
 Thursday, 11th, 7:00 p.m.; Sunday, 14th, 11:00 a.m.;
 Friday, 26th, 9:00 p.m.
Today's Wild West – Thursdays, 9:00 p.m. (11th only; ends)
Travel Detective V – Saturdays, 8:00 p.m.; Sundays, 5:30 p.m.
Year in Space – Wednesday, 17th, 7:00 p.m.

Q2.3 Program Guide

THE MAGAZINE FOR THE FRIENDS OF PUBLIC BROADCASTING – JULY 2019

Q2-3 Program Guide is published each month by the Broadcast Center, a non-profit public service division of Eastern New Mexico University.

Q2-3 Program Guide (Cue to 3) is available to friends contributing \$35 per year or more to the support of public broadcasting. Senior Citizen and Student memberships are available for \$25. All contributions are tax deductible. Donations should be made payable to Friends of **KENW-TV** or to Friends of **KENW-FM** or **KMTH-FM**.

KENW-TV, Channel 3, can be seen on UHF TV analog translators in the following areas:
Tucumcari - Channel 32; Ft. Sumner - Channel 34.

KENW-TV digital transmitters are located in: Artesia; Carlsbad; Ft. Sumner; Hobbs; Portales/Clovis; Roswell; Tucumcari; Ruidoso; Mescalero

KENW-FM, 89.5 MHz, Portales; **KMTH-FM**, 98.7 MHz, Maljamar; **KENM-FM**, 88.9 MHz, Tucumcari; NM; **KENU-FM**, 88.5 MHz, Des Moines, NM; **KENG-FM**, 88.5 MHz; Ruidoso, NM; **KENE-FM**, 88.1 MHz, Raton, and FM translators in:

Apache Springs - 90.9 MHz Las Vegas - 88.1 MHz
Clayton - 93.5 MHz Roswell - 91.1 MHz
Des Moines - 106.1 MHz Wagon Mound - 92.1 MHz
Ft. Sumner - 91.7 MHz

Telephone: From Cannon A.F.B., Clovis, Portales, and Roosevelt County, call (575) 562-2112. Others, call toll-free 1-888-FOR-KENW (367-5369).

Fax: (575) 562-2590

Mailing Address:

KENW-TV/FM
52 Broadcast Center, ENMU
1500 South Avenue K
Portales, NM 88130

Web site: www.kenw.org

E-Mail: kenwtv@enmu.edu
kenwfm@enmu.edu

**We always welcome your comments and/or suggestions:
Toll-free 1-888-FOR-KENW (367-5369)**

4. **"Chasing the Moon,"** a six-hour documentary about the space race on **American Experience**, is the centerpiece of PBS's **Summer of Space**, which also includes **"The Planets"** and **"Back to the Moon"** on **Nova**, **8 Days: To the Moon and Back**, **Ancient Skies**, and several other special programs.
5. **"Galileo's Moon"** on **Secrets of the Dead** reveals the story behind the find of the century: one of the most important books in the history of science. **"Grantchester,"** the popular mystery series on **Masterpiece**, returns for a fourth season and with a new vicar. **The Frozen North – Sir Hubert's Forgotten Submarine Expedition** tells the story of the first expedition to undertake the challenge of reaching the North Pole by submarine. **A Capitol Fourth** commemorates our country's 243rd birthday with all-star musical performances.
6. In **Art of a Cowboy**, a 13-part series, cowboy artist Steve Boaldin's mission is to preserve the legacy of cowboys and ranchers on both film and on canvas. The aim of **Garage with Steve Butler**, a 10-part series, is to teach fun and creative woodworking to viewers without breaking the bank on all the bells and whistles. **P.O.V.** premieres three films: **"Call Her Ganda,"** a modern David and Goliath story; **"Bisbee '17,"** in which an old mining town finally reckons with its darkest day; and **"On Her Shoulders,"** the inspiring story of Nadia Murad, who survived the 2014 genocide in Northern Iraq and escaped from sexual slavery committed by ISIS.
7. **Shake-Up** reveals the causes and consequences of the great behavioral health shake-up of 2013 in New Mexico. **Big Ben: Saving the World's Most Famous Clock**, a two-part series, goes behind the scenes and into the clock tower as it chronicles the four-year restoration project that has silenced its bells since 2017. **The Joy of AI** looks at how we have created machines that can simulate, augment and even outperform the human mind. **Life of a Universe** travels across Australia to reveal our very latest understanding about how the Universe began and how it will end. **Rise of the Superheroes** is a detailed look into how superhero films conquered the world, from Tim Burton's *Batman* movies to *The Avengers*.

Q2.3 Program Guide Staff

Editor: **Linda Stefanovic**

Program Log Descriptions: **Carla Benavidez**
Evelyn Ledbetter

Eastern New Mexico University is an affirmative action and equal opportunity employer. The University does not discriminate on the basis of race, color, national origin, sex, or handicap in its programs, activities, or employment. Persons seeking additional information about the University's nondiscrimination policy should contact the Executive Director of Planning & Analysis, ENMU, Station #2, Portales, NM 88130.

ENMU BOARD OF REGENTS

President

Mr. Ed Tatum

Vice President

Mr. Terry Othick

Secretary / Treasurer

Mr. Joseph Gergel

Member

Dr. Dan Patterson

Member

Mr. Lance Pyle

EASTERN NEW MEXICO UNIV.

President

Dr. Jeff Elwell

Vice President for Academic Affairs

Dr. Jamie Laurenz

Vice President for Academic Support

Mr. Clark Elswick

Vice President for Business Affairs

Mr. Scott Smart

Vice President for Student Affairs

Dr. Jeffrey Long

BROADCAST CENTER STAFF

Director of Broadcasting

Duane W. Ryan

Business Manager

Laura Disney

Accountant

Carla Benavidez

Engineers

Rick Counts

Porfirio Delgado

Jason Murphy

Martin Quintero

Business Affairs Associate

Jim Zupancic

AREA ADMINISTRATOR

Vice President of Planning, Analysis, and Governmental Relations/Chief of Staff

Dr. Patrice Caldwell

KENW-TV STAFF

Development/Promotion

Director

Rena Garrett

Producer/Directors, TV

Allan Crawford

James Wygal

Production/Community

Services Associate

Don Criss

Programming Associate

Linda Stefanovic

Development /Production

Associate

Sheryl Borden

Director of Programming and Operations

Sean Moore

Assistant Operations Director

Justin Robertson

Master Control Operators, TV

David Asplund

Kim Choate

Bill Moyer

Administrative Assistants

Vickie Brisco

Evelyn Ledbetter

KENW/KMTH-FM STAFF

News Director, FM

Janet Lyn Bresenham

Development Director, FM

Amie Griffith

Operations Director, FM

Shannon Hearn

Audio Engineer

Mickey Morgan

Administrative Assistant

Suzanne West

BROADCAST CENTER STUDENT STAFF EMPLOYEES

Jordan Alexander
Spencer Courtney
Heath Gossett
Jordan Honeycutt

Olivia Land
Ryan Schroeder
Landry Widner

From “Out of this World” on **Antiques Roadshow** to “The Planets” on **Nova**, PBS unfurls its **Summer of Space** this July to mark the 50th anniversary of Apollo 11. “Chasing the Moon” on **American Experience** is the centerpiece.

AMERICAN EXPERIENCE

American Experience premieres “Chasing the Moon,” a six-hour documentary about the space race, from its earliest beginnings to the monumental achievement of the first lunar landing in 1969 and beyond.

With no narration and using only archival footage—including a visual feast of previously lost or overlooked material—“Chasing the Moon” features new interviews with a diverse cast of characters who played key roles in these historic events.

Among those included are astronauts Buzz Aldrin, Frank Borman and Bill Anders; Freeman Dyson, the renowned futurist and theoretical physicist; Sergei Khrushchev, the son of former Soviet premier Nikita Khrushchev, who played a prominent role in the Soviet space program as a rocket engineer; and Poppy Northcutt, the 25-year-old “mathematics whiz” who gained worldwide attention as the first woman to serve in the all-male bastion of NASA’s Mission Control.

“Chasing the Moon” explores the early days of the space race, the struggle to catch up with the Soviet Union and the enormous stakes in the quest to reach the moon.

The series reveals both the breathtaking failures and successes of the developing U.S. space program, including the tragedy with Apollo 1 and the triumphant comeback with Apollo 8. Experience the first moon landing, witnessed by the largest TV audience ever.

“Chasing the Moon” on **American Experience** airs on 3-2 Monday–Wednesday, the 8th–10th at 8:00 p.m. and repeats Tuesdays at 7:00 p.m. beginning the 16th. On 3-1, the series airs Tuesday–Thursday, the 9th–11th at 7:00 p.m. and repeats Wednesdays at 7:00 p.m. beginning the 17th.



(LtoR:) Neil Armstrong, Michael Collins and Edwin E. Aldrin, Jr.



Poppy Northcutt was the first woman to serve in NASA’s Mission Control.

Ancient Skies

With CGI, landscape footage and some of the world’s most important astronomical artifacts, **Ancient Skies**, a three-part series, looks at the universe through the eyes of our ancestors. From hunter-gatherers to Edwin Hubble, we’ll see the myriad of ways that we have observed and imagined the heavens, and explain the science behind the things our ancestors sought to explain through mythology.

Ancient Skies will be broadcast on 3-2 Wednesdays at 7:00 p.m. beginning the 24th and Saturdays at 11:00 p.m. beginning the 27th. On 3-1, the series airs Wednesdays at 9:00 p.m. beginning the 24th, Thursdays at 2:00 p.m. beginning the 25th, Saturdays at 4:00 p.m. beginning the 27th and Mondays at 6:00 a.m. beginning the 29th.



Prague Astronomical Clock

NOVA

Back to the Moon

Fifty years after humans first set foot on the Moon, new scientific discoveries are fueling excitement for a return to the lunar surface—this time, perhaps, to stay. Join the scientists and engineers working to make life on the Moon a reality, in “Back to the Moon” on **Nova**.

“Back to the Moon” looks ahead to the hoped-for dawn of a new age in lunar exploration. This time, governments and private industry are working together to reach our nearest celestial neighbor.

But why go back? The Moon can serve as a platform for basic astronomical research; as an abundant source of rare metals and hydrogen fuel; and ultimately as a stepping stone for human missions to Mars and beyond. Hopefully, our legacy of lunar exploration won’t be confined to the history books for long.

“Back to the Moon” on **Nova** airs on 3-2 Wednesday, the 10th at 7:00 p.m. and Saturday, the 20th at 10:00 p.m. On 3-1, it airs Thursday, the 11th at 4:00 p.m., Friday, the 12th at 8:00 p.m., Saturday, the 13th at 11:00 p.m. and Sunday, the 14th at 4:00 p.m.

8 Days: To the Moon and Back

Take a unique journey with the crew of Apollo 11 for their 239,000 mile, eight-day, three-hour, 18-minute and 35-second mission in **8 Days: To the Moon and Back**.

The film seamlessly blends authentic, rare mission audio featuring candid conversations between Neil Armstrong, Buzz Aldrin and Michael Collins with newly shot studio footage, and with NASA and news archives. Stunning CGI recreations of the historic journey and landing tell this amazing story in a riveting new way.

8 Days: To the Moon and Back can be seen on 3-2 Wednesday, the 17th at 8:00 p.m. On 3-1, it airs Saturday, the 20th at 11:00 p.m. and Monday, the 22nd at 7:00 p.m.



Apollo 11 leaving Earth

NOVA The Planets

“The Planets,” a five-part series, tells the dramatic story of our solar system, spanning billions of years through the discoveries of the most groundbreaking space missions.

Using extraordinary footage captured by orbiters, landers and rovers, viewers experience an up-close look at these faraway worlds. Stand on the dark side of Pluto, lit only by the reflected light of its moons, watch the sun set over an ancient Martian waterfall four times the size of any found on Earth, and witness a storm twice the size of Earth from high above Saturn. And, learn how each of them has affected our own planet: Earth.

Please refer to the AtoZ on page 2 to learn the date/times this series is being broadcast on 3-2. Refer to page 19 for 3-1 broadcast dates/times.



Secrets
of the Dead

Galileo's Moon

In "Galileo's Moon," **Secrets of the Dead** reveals the story behind the find of the century: a proof copy of *Sidereus Nuncius* (also known as the *Starry Messenger*), one of the most important books in the history of science.

Unlike other known copies that had engraved images of the phases of the moon, this copy included watercolor paintings seemingly by author Galileo Galilei, one of the greatest scientific minds of all time. The 2005 discovery set the rare book market abuzz 400 years after its publication. The proof copy, if genuine, would be worth millions.

In 1610, *Sidereus Nuncius* was the first published scientific work based on observations made through a telescope. Galileo's work challenged the belief that the Earth was the center of the universe. Five hundred and fifty copies of the book were originally printed and roughly 150 of those editions are known to exist today.

In "Galileo's Moon," join a team of experts as they search for the truth behind the alleged proof copy of *Sidereus Nuncius*.

"Galileo's Moon" on **Secrets of the Dead** can be seen on 3-2 Tuesday, the 2nd at 7:00 p.m. and Sunday, the 7th at 11:00 a.m. and 6:00 p.m. On 3-1, it will be broadcast Wednesday, the 3rd at 8:00 p.m. on KENW-TV.

The Frozen North – Sir Hubert's Forgotten Submarine Expedition

Sir Hubert Wilkins was one of the most successful polar explorers of all times. In 1931, for the first time in history, his Nautilus Expedition undertook the challenge to reach the North Pole by submarine. Sir Hubert's specially-built sub, the Nautilus, was named

after the fictional submarine in Jules Verne's *Twenty Thousand Leagues Under the Sea*.

The Frozen North – Sir Hubert's Forgotten Submarine Expedition recounts the adventurous journey of an obsessed explorer who devoted his entire life to the

exploration and research of the polar region. **The Frozen North** follows oceanographer Hans Fricke on his search for the wreck of the Nautilus, and brings back to life one of the last polar adventures of our time.

While Sir Hubert's mission failed, the expedition proved that submarines were capable of operating underneath the polar ice. It was not until 1958 that the USS Nautilus, a US Navy nuclear submarine, reached the North Pole underwater.

The Frozen North – Sir Hubert's Forgotten Submarine Expedition airs on 3-2 Tuesday, the 2nd at 8:00 p.m., Sunday, the 7th at 9:30 p.m. and Thursday, the 25th at 7:00 p.m. On 3-1, it airs Wednesday, the 3rd at 7:00 p.m. and Thursday, the 4th at 7:00 a.m.



MASTERPIECE

Grantchester, Season 4

There is good news for fans of "Grantchester" on **Masterpiece**. The popular mystery series returns for a fourth season with a new vicar. Tom Brittney (Call the Midwife) is joining the cast as Reverend Will Davenport—man of the people and crime-solving partner to Robson Green's Geordie Keating in 1950s Grantchester. James Norton, who plays the charismatic, jazz-loving clergyman Sidney Chambers, makes his final appearance during the series.

Confident, caring and self-assured, Grantchester's young new parish priest channels his boundless energy into a quest for social justice. He is a man of God, but with the devil inside of him. As Geordie draws him into righting the wrongs of criminal Cambridge, Will's own troubled past is unearthed.

"Grantchester 4" on **Masterpiece** airs on 3-2 Sundays at 8:00 p.m. beginning the 14th and repeats Fridays at 10:00 p.m. On 3-1, it airs Sundays at 7:00 p.m. beginning the 14th and repeats Mondays at 1:00 p.m.



(LtoR:) Tom Brittney as Will Davenport, Robson Green as Geordie Keating and James Norton as Sidney Chambers

A CAPITOL FOURTH

With a special concert that pays tribute to our men and women in uniform and their families, **A Capitol Fourth** continues its 39-year tradition of celebrating our nation's independence on the West Lawn of the Capitol building. Actor John Stamos returns as host.

A Capitol Fourth commemorates our country's 243rd birthday with all-star musical performances: music legend Carole King with the Broadway cast of the Tony and Grammy Award-winning musical *Beautiful*, starring Vanessa Carlton; electronic violinist Lindsey Stirling; singer-songwriter and actress Keala Settle; recording artist and star of television, film and the Broadway stage Vanessa Williams; double ACM winner Lee Brice; singer-songwriter Colbie Caillat; Gospel vocalist Yolanda Adams; 2019 *American Idol* winner Laine Hardy; *America's Got Talent* singing sensation Angelica Hale; and this year's winner of *The Voice* (Season 16), Maelyn Jarmon.

The *Sesame Street* Muppets perform a medley of patriotic favorites and iconic songs from the series, currently celebrating 50 years of learning and fun. The evening is capped off with fireworks over our nation's iconic skyline.

A Capitol Fourth can be seen on 3-2 Thursday, the 4th at 7:00 p.m. and 9:00 p.m. On 3-1, it airs Thursday, the 4th at 9:30 p.m. and Saturday, the 6th at 7:00 p.m.



Art of a Cowboy

Art of a Cowboy, a 13-part series, captures cowboy artist Steve Boaldin's vision of preserving the legacy of cowboys and ranchers on film and on canvas. Each episode is filmed on present-day working ranches across the country, where many of the methods these cowboys use for working cattle have not changed in over 100 years.



A third-generation rancher himself, Steve is as proficient at cutting steers and roping calves as he is mixing colors and stretching canvas for his next oil painting. His mission is to capture the spirit of the ranches and their families in sketches and photos. He then uses these drawings and pictures to create cowboy-themed fine art.

Art of a Cowboy will be broadcast on 3-2 Mondays at 10:00 p.m. beginning the 8th and Thursdays at 9:00 p.m. beginning the 18th. On 3-1, it airs Tuesdays at 7:30 p.m. beginning the 16th and Saturdays at 11:30 a.m. beginning the 20th.

P.O.V.

Call Her Ganda

A modern David and Goliath story, "Call Her Ganda" on **P.O.V.** follows a cast of willful women as they take on some of the most powerful institutions in the world. Set amid the complex aftermath of U.S. imperial rule in the Philippines, the film is a daring geopolitical investigative exposé.

When a 26-year old Filipina transgender woman and alleged sex worker, Jennifer Laude, is found dead in a motel room, the perpetrator is quickly identified as 19-year-old U.S. marine Joseph Scott Pemberton. Pemberton was on leave when he solicited Jennifer at a disco. On discovering that Jennifer was transgender, he brutally murdered her.

Three women intimately invested in the case—an activist attorney, a transgender journalist and Jennifer's mother—galvanize a political uprising, pursuing justice and taking on hardened histories of U.S. imperialism that have allowed previous American perpetrators to evade consequence.

"Call Her Ganda" on **P.O.V.** airs on 3-2 Monday, the 1st at 9:00 p.m. On 3-1, it airs Sunday, the 7th at 9:00 p.m.



Garage with Steve Butler

The premise of the **Garage with Steve Butler**, a 10-part series, is to teach woodworking to the viewer, and to make it accessible economically and technically. No one should ever be intimidated or afraid to try and learn because they don't have all of the bells and whistles. The idea is to have fun, be creative and make great objects without breaking the bank.

Steve Butler is an artist and furniture maker with more than 25 years experience in the field. In his garage workshop, he shares with you the way to make fun, funky woodworking projects—from fine furniture to cigar box guitars to a classic foosball game.

Garage with Steve Butler airs on 3-2 Saturdays at 6:00 a.m. beginning the 13th and Wednesdays at 11:30 a.m. beginning the 31st. On 3-1, it airs Wednesdays at 10:00 a.m. beginning the 17th and Saturdays at 2:00 p.m. beginning the 20th.

Bisbee '17

In "Bisbee '17" on **P.O.V.**, an old mining town on the Arizona-Mexico border finally reckons with its darkest day.

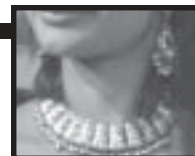
In 1917, nearly two-thousand immigrant miners, on strike for better wages and safer working conditions, were violently rounded up by their armed Bisbee neighbors, herded onto cattle cars, shipped to the middle of the New Mexican desert, and left there to die. This long-buried and largely forgotten event came to be known as the Bisbee Deportation.

"Bisbee '17" documents locals as they play characters and stage dramatic scenes from the controversial story, culminating in a large scale recreation of the deportation itself on the exact day of its 100th anniversary.

These dramatized scenes are based on subjective versions of the story and offer conflicting views of the event. The film confronts the current political predicaments of immigration, unionization, environmental damage and corporate corruption.

"Bisbee '17" on **P.O.V.** can be seen on 3-2 Monday, the 15th at 9:00 p.m. On 3-1, it airs Sunday, the 21st at 9:00 p.m.

Illusions in Stone



Illusions in Stone tells the global story of the emerald trade. You meet righteous thieves, reckless illegal miners and religious scholars in an underground business. Their dreams of emerald wealth often prove to be an illusion.

The journey begins in the mines of Brazil, where workers face danger and uncertainty both below and above ground. The gems are then cut and polished in Jaipur—India's pink city—where a deeply religious community holds a virtual monopoly on the stones from the mines of Brazil and Africa.

We meet the members of an Israeli syndicate who value honesty above all else, while working with the smugglers that looted 90% of the production of their mines.

It is in Colombia where we find the world's finest emeralds, and where the ground around the emerald mines is often soaked with blood.

Illusions in Stone airs on 3-2 Sunday, the 28th at 10:00 p.m. and Wednesday, the 31st at 9:00 p.m. On 3-1, it can be seen Monday, the 29th at 8:00 p.m.

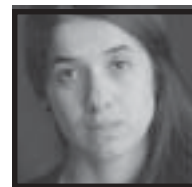
On Her Shoulders

"On Her Shoulders" on **P.O.V.** follows Nadia Murad, a 23-year-old Yazidi, who survived the 2014 genocide of the Yazidis in Northern Iraq and escaped from sexual slavery committed by ISIS. Nadia went on to become a relentless beacon of hope for her people—even when at times she longs to lay aside this monumental burden and simply have an ordinary life.

P.O.V. follows this strong-willed young woman thrust onto the international stage—from giving testimony before the U.N. to visiting refugee camps to soul-bearing media interviews and one-on-one meetings with top government officials.

Nadia is a nominee for the Nobel Peace Prize and the UN's first Goodwill Ambassador for the Dignity of Survivors of Human Trafficking.

"On Her Shoulders" on **P.O.V.** can be seen on 3-2 Monday, the 22nd at 8:30 p.m. On 3-1, it will be broadcast Sunday, the 28th at 9:00 p.m.





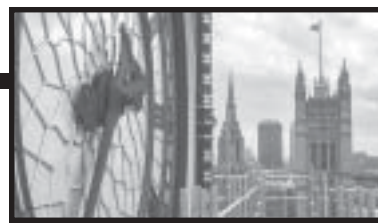
Shake-Up – Causes & Consequences

It was the great behavioral health shake-up of 2013, and one of the biggest controversies of Gov. Susana Martinez's administration. Her Human Services Department cut off Medicaid payments to 15 mental health providers after an audit by the Public Consulting Group—a management and operations improvement firm—raised questions about fraud and abuse, alleging \$36 million in state Medicaid funding was mishandled by the providers.

The providers were replaced by five Arizona companies hired on no-bid emergency contracts. In many cases, this disrupted or delayed treatment for substance abuse or mental health services to low-income New Mexicans. Many of the accused New Mexico providers were forced to close. Hundreds of people lost their jobs.

The allegations of fraud later fell apart. Following a three-year investigation, state Attorney General Hector Balderas announced that, although his investigators found some regulatory violations, “there did not appear to be a pattern of fraud” for any of the providers and that those providers owed Medicaid only a fraction of the \$36 million Martinez's administration originally had claimed.

Shake-Up airs on 3-2 Tuesday, the 9th at 10:00 p.m., Thursday, the 11th at 7:00 p.m., Sunday, the 14th at 11:00 a.m., and Friday, the 26th at 9:00 p.m. On 3-1, it airs Tuesday, the 2nd at 7:00 p.m., Tuesday, the 9th at 8:00 a.m., and Friday, the 12th at 9:00 p.m.



BIG BEN: Saving the World's Most Famous Clock

The Big Ben clock tower in London is one of the world's most visited landmarks, but very few have ever ventured inside. **Big Ben: Saving the World's Most Famous Clock**, a two-part series, goes behind the scenes and into the tower as it chronicles the four-year restoration project that has silenced its bells since 2017.

The film tells the story of the architects, clockmakers, engineers and various other experts who have the task of taking apart Big Ben's giant mechanism for the first time in nearly 160 years in order to bring the iconic Victorian structure into the 21st century.

Big Ben: Saving the World's Most Famous Clock airs on 3-2 Sundays at 10:00 a.m., 6:00 p.m., and 9:00 p.m. beginning the 21st. On 3-1, it airs Sundays at 8:00 p.m. beginning the 21st and Tuesdays at 2:00 p.m. beginning the 23rd.

THE JOY OF AI

In **The Joy of AI**, Professor Jim Al-Khalili looks at how we have created machines that can simulate, augment and even outperform the human mind—and why we shouldn't let this spook us.



He reveals the story of the pursuit of AI, the emergence of machine learning and the recent breakthroughs brought about by artificial neural networks.

He shows how AI is not only changing our world, but also challenging our very ideas of intelligence and consciousness.

Along the way, we'll investigate spam filters, meet a cutting-edge chatbot and look at why a few altered pixels make a computer think it's looking at a trombone rather than a dog. The film also features Demis Hassabis, head of DeepMind, whose stated mission is to “solve intelligence, and then use that to solve everything else.”

The Joy of AI airs on 3-2 Tuesday, the 16th at 10:00 p.m., Thursday, the 18th at 7:00 p.m. and Friday, the 26th at 11:00 p.m. On 3-1, it airs Friday, the 19th at 9:00 p.m. and Sunday, the 28th at 4:00 p.m.

Life of a Universe

How did our Universe come into existence? Was there a time before the Big Bang? Do our laws of physics inexorably lead to the existence of us? When will the last day on Earth be? When will the stars die and the sky go dark? What will be left at the very end of the everything? Is the end of the Universe really even the end?

In **Life of a Universe**, British Professor and cosmologist Brian Cox travels across Australia to reveal our very latest understanding about how the Universe began and how it will end. Professor Cox visits historic sites related to space and science, including the Tidbinbill's telescopes outside the Canberra Deep Space Communication Complex.



The film focuses on the work of eminent scientists Stephen Hawking, Brian Greene, Neil Degraffe Tyson and others, and shares unique clues that can only be revealed by exploring the Southern Sky.

Life of a Universe can be seen on 3-2 Sunday, the 14th at 10:00 a.m. and 10:00 p.m. and Friday, the 19th at 9:00 p.m. On 3-1, it airs Monday, the 15th at 7:00 p.m.

Rise of the Superheroes

Rise of the Superheroes is a detailed look into how superhero films conquered the world, from Tim Burton's *Batman* movies to *The Avengers*. The two-hour film analyzes how superhero movies, once thought to be too campy and mainly for children, have taken over Hollywood and are now the highest-grossing movies in the world.

Before such hits as *The Dark Knight* and *Iron Man*, there was *Batman*, released in 1989 and featuring established stars Michael Keaton, Jack Nicholson and Kim Basinger.

Batman proved that comic book movies were starting to find a foothold in mainstream culture.

While the 1990s relied on stand-alone epics based on books or historical events, audiences now enjoy the cutting-edge special effects and escapism that a series of modern superhero movies can provide.

Rise of the Superheroes airs on 3-2 Sunday, the 14th at 6:00 p.m. and Monday, the 29th at 8:00 p.m. On 3-1, it airs Saturday, the 20th at 7:00 p.m. and Monday, the 29th at 2:00 p.m.



◆ KENW-TV's DAYTIME SCHEDULES ◆

Kids' Programming, How-to's, and Family Viewing

Channels 3-1 (HD), 3-2, 3-3, 3-4 (SD) require a digital television or a converter box, both with antennas in order to receive free over-the-air signals.

Channel 3-2

Monday through Friday

5:00 am	Wai Lana Yoga
5:30 am	Body Electric
6:00 am	Classical Stretch
6:30 am	BBC World News
7:00 am	Ready, Jet, Go!
7:30 am	Nature Cat
8:00 am	Wild Kratts
8:30 am	Peg + Cat
9:00 am	Daniel Tiger's Neighborhood
9:30 am	Daniel Tiger's Neighborhood
10:00 am	Let's Go Luna!
10:30 am	Curious George
11:00 am	Cook's Country (M)
	Kevin Belton's New Orleans Kitchen (Tu)
	Fishing Behind the Lines (W)
	Craftman's Legacy (Th)
	Thomas Edison's Secret Lab (F)
11:30 am	Martha Stewart's Cooking School (M)
	Knit and Crochet Now (Tu)
	Classic Woodworking (W)
	America's Test Kitchen (Th)
	Mister Rogers (F)
12:00 pm	Sit and Be Fit (MWF)
	Creative Living (TuTh)
12:30 pm	Beads, Baubles and Jewels (M)
	It's Sew Easy (Tu)
	Quilting Arts (W)
	Welcome to My Studio (Th)
	Beauty of Oil Painting (F)
1:00 pm	Sesame Street
1:30 pm	Pinkalicious & Peterrific
2:00 pm	Splash and Bubbles
2:30 pm	Dinosaur Train
3:00 pm	Arthur
3:30 pm	Molly of Denali
4:00 pm	Odd Squad (M-Th)
	Kid Stew (F)
4:30 pm	BBC World News America (M-F)
5:00 pm	Washington Week (M)
	Healthy Body Healthy Mind (Tu)
	Start Up (W)
	Islands Without Cars (Th)
	Focus on Europe (F)
5:30 pm	Nightly Business Report
6:00 pm	PBS NewsHour

Channel 3-3

Monday through Friday

5:00 am	Ready, Jet, Go!
5:30 am	Peg + Cat
6:00 am	Wild Kratts
6:30 am	Molly of Denali
7:00 am	Curious George
7:30 am	Let's Go Luna!
8:00 am	Daniel Tiger's Neighborhood
8:30 am	Daniel Tiger's Neighborhood
9:00 am	Sesame Street
9:30 am	Pinkalicious & Peterrific
10:00 am	Dinosaur Train
10:30 am	Cat in the Hat
11:00 am	Sesame Street
11:30 am	Splash and Bubbles
12:00 pm	Pinkalicious & Peterrific
12:30 pm	Let's Go Luna!
1:00 pm	Nature Cat
1:30 pm	Wild Kratts
2:00 pm	Molly of Denali
2:30 pm	Odd Squad
3:00 pm	Odd Squad
3:30 pm	Arthur
4:00 pm	Arthur
4:30 pm	Ready, Jet, Go!
5:00 pm	Sesame Street
5:30 pm	Pinkalicious & Peterrific
6:00 pm	Nature Cat
6:30 pm	Wild Kratts
7:00 pm	Odd Squad
7:30 pm	Odd Squad
8:00 pm	Arthur
8:30 pm	Arthur



Saturday

5:00 am	Sesame Street
5:30 am	Mister Rogers
6:00 am	Pinkalicious & Peterrific
6:30 am	Molly of Denali
7:00 am	Let's Go Luna!
7:30 am	Nature Cat
8:00 am	Curious George
8:30 am	Wild Kratts
9:00 am	Odd Squad
9:30 am	Arthur
10:00 am	Ready, Jet, Go!
10:30 am	Cyberchase
11:00 am	Mister Rogers
11:30 am	Daniel Tiger's Neighborhood
12:00 pm	Sesame Street
12:30 pm	Splash and Bubbles
1:00 pm	Curious George
1:30 pm	Nature Cat
2:00 pm	Ready, Jet, Go!
2:30 pm	Wild Kratts
3:00 pm	Dinosaur Train
3:30 pm	Let's Go Luna!
4:00 pm	Daniel Tiger's Neighborhood
4:30 pm	Pinkalicious & Peterrific
5:00 pm	Molly of Denali
5:30 pm	Sesame Street
6:00 pm	Nature Cat
6:30 pm	Ready, Jet, Go!
7:00 pm	Wild Kratts
7:30 pm	Odd Squad
8:00 pm	Arthur
8:30 pm	Cyberchase

Sunday

5:00 am	Sesame Street
5:30 am	Mister Rogers
6:00 am	Pinkalicious & Peterrific
6:30 am	Molly of Denali
7:00 am	Let's Go Luna!
7:30 am	Nature Cat
8:00 am	Curious George
8:30 am	Wild Kratts
9:00 am	Odd Squad
9:30 am	Arthur
10:00 am	Ready, Jet, Go!
10:30 am	Cyberchase
11:00 am	Mister Rogers
11:30 am	Daniel Tiger's Neighborhood
12:00 pm	Sesame Street
12:30 pm	Splash and Bubbles
1:00 pm	Curious George
1:30 pm	Nature Cat
2:00 pm	Ready, Jet, Go!
2:30 pm	Wild Kratts
3:00 pm	Dinosaur Train
3:30 pm	Let's Go Luna!
4:00 pm	Daniel Tiger's Neighborhood
4:30 pm	Pinkalicious & Peterrific
5:00 pm	Molly of Denali
5:30 pm	Sesame Street
6:00 pm	Nature Cat
6:30 pm	Ready, Jet, Go!
7:00 pm	Wild Kratts
7:30 pm	Odd Squad
8:00 pm	Arthur
8:30 pm	Cyberchase

Channel 3-1

Saturday

5:00 am	Mister Rogers
5:30 am	Splash and Bubbles
6:00 am	Sesame Street
6:30 am	Daniel Tiger's Neighborhood
7:00 am	Pinkalicious & Peterrific
7:30 am	Molly of Denali
8:00 am	Let's Go Luna!
8:30 am	Nature Cat
9:00 am	Curious George
9:30 am	Wild Kratts
10:00 am	Odd Squad
10:30 am	Arthur

Sunday

5:00 am	Mister Rogers
5:30 am	Splash and Bubbles
6:00 am	Sesame Street
6:30 am	Daniel Tiger's Neighborhood
7:00 am	Pinkalicious & Peterrific
7:30 am	Molly of Denali
8:00 am	Let's Go Luna!
8:30 am	Nature Cat
9:00 am	Curious George
9:30 am	Wild Kratts
10:00 am	Odd Squad
10:30 am	Arthur

KENW TV SCHEDULES 3-1 (HD), 3-2 (SD) AND 3-3 (SD)

Our regular KENW-TV Channel (3-2) is listed below in bold. It can be seen by those who use cable or one of our analog translators listed on page 3. Schedule 3-1 is our High Definition (HD) Channel, 3-3 is our Children's/Encore Standard Definition Channel (SD), and 3-4 is our FXN Channel (First Nation Experience). Those with either digital TV sets or analog sets with converter boxes (both require antennas) can receive all four channels in most parts of our viewing area. KENW-TV has digital transmitters in the following cities: Clovis/Portales; Hobbs/Lovington; Roswell; Artesia; Fort Sumner; Tucumcari; Carlsbad; Ruidoso; Mescalero.

KENW-TV's 3-1 schedule (below in italics) is carried by DirecTV in most counties of New Mexico.
KENW-TV's 3-2 schedule (below in bold) is carried on Dish network in most counties of New Mexico.

Monday 1st

5:00	3-1	<i>Classical Stretch</i>
5:30	3-1	<i>Wai Lana Yoga</i>
6:00	3-1	<i>Rivers of Life "Amazon"</i>
7:00	3-1	<i>In the Americas with David Yetman</i>
7:30	3-1	<i>Joseph Rosendo's Travelscope</i>
8:00	3-1	<i>Rick Steve's Europe</i>
8:30	3-1	<i>Nick Stellino: Storyteller in the Kitchen</i>
9:00	3-1	<i>Pati's Mexican Table</i>
9:30	3-1	<i>Kevin Belton's New Orleans Celebration</i>
10:00	3-1	<i>P. Allen Smith's Garden Home</i>
10:30	3-1	<i>Jazzy Vegetarian</i>
11:00	3-1	<i>Classical Stretch</i>
11:30	3-1	<i>Sit and Be Fit</i>
12:00	3-1	<i>Great British Baking Show</i>
1:00	3-1	<i>Masterpiece "Endeavour," Pt. 6</i>
2:30	3-1	<i>On Story</i>
3:00	3-1	<i>Roadtrip Nation</i>
3:30	3-1	<i>Urban Conversion</i>
4:00	3-1	<i>America's Heartland</i>
4:30	3-1	<i>Daytripper</i>
5:00	3-1	<i>Scully/The World Show</i>
5:30	3-1	<i>Nightly Business Report</i>
6:00	3-1	<i>PBS NewsHour</i>
7:00	3-2	Antiques Roadshow "Vintage Tampa 2019"
	3-1	<i>National Parks – Troubled Edens</i>
8:00	3-2	Gettysburg Story
	3-1	<i>Backs Against the Wall: The Howard Thurman Story</i>
9:00	3-2	POV "Call Her Ganda"
	3-1	<i>Antique Roadshow</i>
	3-3	<i>Great British Baking Show</i>
10:00	3-1	<i>Amanpour and Company</i>
	3-3	<i>Masterpiece "Endeavour," Pt. 6</i>
10:30	3-2	Taste of History "Cajun Cuisine"
11:00	3-2	Antiques Roadshow "Vintage Tampa 2019"
	3-1	<i>PBS NewsHour</i>
11:30	3-3	<i>On Story</i>
12:00	3-2	PBS NewsHour
	3-1	<i>POV "Call Her Ganda"</i>
	3-3	<i>National Parks – Troubled Edens</i>

Tuesday 2nd

5:00	3-1	<i>Classical Stretch</i>
5:30	3-1	<i>Wai Lana Yoga</i>
6:00	3-1	<i>Antiques Roadshow</i>
7:00	3-1	<i>Liberty & Slavery: The Paradox of America's Founding Fathers</i>
8:00	3-1	<i>Live Art: Love</i>
9:00	3-1	<i>Innovations in Medicine</i>
9:30	3-1	<i>Second Opinion</i>
10:00	3-1	<i>Closer to Truth</i>
10:30	3-1	<i>Stories of the Mind</i>
11:00	3-1	<i>Classical Stretch</i>
11:30	3-1	<i>Wai Lana Yoga</i>
12:00	3-1	<i>Around the Farm Table</i>
12:30	3-1	<i>Taste of History</i>
1:00	3-1	<i>Masterpiece "Poldark 4," Pt. 2</i>
2:00	3-1	<i>Backs Against the Wall: The Howard Thurman Story</i>
3:00	3-1	<i>Antiques Roadshow</i>
4:00	3-1	<i>Consuelo Mack Wealthtrack</i>
4:30	3-1	<i>Start Up</i>

5:00	3-1	<i>Firing Line with Margaret Hoover</i>
5:30	3-1	<i>Nightly Business Report</i>
6:00	3-1	<i>PBS NewsHour</i>
7:00	3-2	Secrets of the Dead "Galileo's Moon"
	3-1	<i>Shake-Up (In New Mexico)</i>
8:00	3-2	Frozen North – Sir Hubert's Forgotten Submarine
	3-1	<i>Reveal</i>
9:00	3-2	You Should Know
	3-1	<i>Jamestown, Pt. 3</i>
	3-3	<i>Antiques Roadshow</i>
9:30	3-2	Creative Living
10:00	3-2	Frontline "American Patriot"
	3-1	<i>Amanpour and Company</i>
	3-3	<i>History Detectives</i>
11:00	3-2	Amanpour and Company
	3-1	<i>PBS NewsHour</i>
	3-3	<i>Backs Against the Wall: The Howard Thurman Story</i>
12:00	3-2	PBS NewsHour
	3-1	<i>Frontline "American Patriot"</i>
	3-3	<i>America's Heartland</i>

Wednesday 3rd

5:00	3-1	<i>Classical Stretch</i>
5:30	3-1	<i>Wai Lana Yoga</i>
6:00	3-1	<i>Consuelo Mack Wealthtrack</i>
6:30	3-1	<i>Scully/The World Show</i>
7:00	3-1	<i>Travelogue China</i>
7:30	3-1	<i>Expeditions with Patrick McMillan</i>
8:00	3-1	<i>F.S. Key and the Song that Built America</i>
9:00	3-1	<i>Craftsman's Legacy</i>
9:30	3-1	<i>Woodwright's Shop</i>
10:00	3-1	<i>American Woodshop</i>
10:30	3-1	<i>Woodsmith Shop</i>

11:00	3-1	<i>Classical Stretch</i>
11:30	3-1	<i>Sit and Be Fit</i>
12:00	3-1	<i>Sara's Weeknight Meals</i>
12:30	3-1	<i>Cook's Country</i>
1:00	3-1	<i>Masterpiece "Downton Abby 4," Pt. 2</i>
2:00	3-1	<i>Rick Steves' European Travel Tips and Tricks</i>
3:00	3-1	<i>New Scandinavian Cooking</i>
3:30	3-1	<i>Neven's Irish Food Trails</i>
4:00	3-1	<i>Lidia's Kitchen</i>
4:30	3-1	<i>America's Test Kitchen</i>
5:00	3-1	<i>Story in the Public Square</i>
5:30	3-1	<i>Nightly Business Report</i>
6:00	3-1	<i>PBS NewsHour</i>
7:00	3-2	Rivers of Life "Mississippi"
	3-1	<i>Frozen North – Sir Hubert's Forgotten Submarine Expedition</i>
8:00	3-2	Nova "Black Hole Apocalypse"
	3-1	<i>Secrets of the Dead "Galileo's Moon"</i>
9:00	3-2	Nova "Black Hole Universe"
	3-1	<i>Rivers of Life "Mississippi"</i>
	3-3	<i>Start Up</i>
9:30	3-3	<i>Music Voyager</i>
10:00	3-2	Second Opinion "Lyme Disease"
	3-1	<i>Amanpour and Company</i>
	3-3	<i>Masterpiece "Downton Abbey 4," Pt. 2</i>
10:30	3-2	This Old House
11:00	3-2	Amanpour and Company
	3-1	<i>PBS NewsHour</i>
	3-3	<i>Rick Steves' European Travel Tips</i>
12:00	3-2	PBS NewsHour
	3-1	<i>Nova "Black Hole Apocalypse"</i>
	3-3	<i>Anthem</i>

Thursday 4th

5:00	3-1	<i>Classical Stretch</i>
5:30	3-1	<i>Wai Lana Yoga</i>

KENW-TV on Cable Companies

We are pleased to announce that Plateau TV is now carrying all four channels of KENW-TV on its TV fiber optic service in many cities; for its service area, see http://www.plateau.tv/service_area/. In the Portales area, Yucca Telecom also carries our four TV channels; the Yucca TV coverage area is at <https://yuccatelecom.com/tv/>.

KENW-TV's 3-1 (High Definition, HD) and 3-2 (Standard Definition, SD) program schedules can be seen on the following cable companies:

Alpine, TX: Channel 12 (SD) and Channel 712 (HD), TDS
 Dexter: Channel 3 (SD) and Channel 470 (HD), Cable One
 Ft. Stanton, TX: Channel 6 (SD) and Channel 706 (HD), TDS
 Hobbs: Channel 3 (SD) and Channel 703 (HD), TDS
 Portales: Channel 3 (SD), and Channel 510 (HD), Comcast Cable
 Roswell: Channel 3 (SD), and Channel 470 (HD), Cable One

KENW-TV's 3-2 Schedule (Standard Definition, SD) can be seen on the following cable companies:

Artesia: Channel 3, PVT
 Carlsbad: Channel 3, TDS
 Clovis: Channel 3, Suddenlink
 Dexter: Channel 3, PVT
 Eddy County South: Channel 3, TDS
 Eunice: Channel 3, TDS
 Farwell: Channel 3, Suddenlink
 Ft. Sumner: Channel 3, Reach Broadband
 Hagerman: Channel 3, PVT

Jal: Channel 3, TDS
 Lea County: Channel 3, TDS
 Loving: Channel 3, TDS
 Lovington: Channel 3, TDS
 Melrose: Channel 9, Reach Broadband
 Muleshoe, TX: Channel 5, Reach Broadband
 Texico: Channel 3, Suddenlink
 Tucumcari: Channel 11, Comcast

6:00 3-1 *IQ: Smartparent*
 6:30 3-1 *Travels with Darley*
 7:00 3-1 *Frozen North – Sir Hubert's Forgotten Submarine Expedition*
 8:00 3-1 *Antiques Roadshow*
 9:00 3-1 *Fons & Porter's Love of Quilting*
 9:30 3-1 *Quilt in a Day*
 10:00 3-1 *Knit and Crochet Now*
 10:30 3-1 *It's Sew Easy*
 11:00 3-1 *Classical Stretch*
 11:30 3-1 *Happy Yoga*
 12:00 3-1 *Christopher Kimball's Milk Street*
 12:30 3-1 *Simply Ming*
 1:00 3-1 *Mexico – One Plate at a Time*
 1:30 3-1 *Joanne Weir's Gets Fresh*
 2:00 3-1 *Rivers of Life "Mississippi"*
 3:00 3-1 *Nova "Black Hole Apocalypse"*
 4:00 3-1 *Nova "Black Hole Universe"*
 5:00 3-1 *Americas Now*
 5:30 3-1 *Nightly Business Report*
 6:00 3-1 *PBS NewsHour*
 7:00 3-2 **Capitol Fourth**
 3-1 *Anthem*
 8:00 3-1 *Red Green Show*
 8:30 3-2 **PBS Previews: Country Music**
 3-1 *You Should Know*
 9:00 3-2 **Capitol Fourth**
 3-1 *Creative Living*
 3-3 *Roadtrip Nation*
 9:30 3-1 *Capitol Fourth*
 3-3 *Islands With Cars*
 10:00 3-3 *Rivers of Life "Mississippi"*
 10:30 3-2 **PBS Previews: Country Music**
 11:00 3-2 **Amanpour and Company**
 3-1 *PBS NewsHour*
 3-3 *Secrets of the Dead "Galileo's Moon"*
 12:00 3-2 **PBS NewsHour**
 3-1 *Masterpiece "Downton Abbey," Pt. 2*
 3-3 *Beyond Your Backyard*

Friday 5th

5:00 3-1 *Classical Stretch*
 5:30 3-1 *Wai Lana Yoga*
 6:00 3-1 *America's Heartland*
 6:30 3-1 *Garden Smart*
 7:00 3-1 *Song of the Mountains*
 8:00 3-1 *Sun Studio Sessions*
 8:30 3-1 *Songs at the Center*
 9:00 3-1 *Wheels of Yesteryear: Touring with Tin Lizzies*
 9:30 3-1 *Today's Wild West*
 10:00 3-1 *Joy of Painting*
 10:30 3-1 *Beauty of Oil Painting*
 11:00 3-1 *Classical Stretch*
 11:30 3-1 *Sit and Be Fit*
 12:00 3-1 *This Old House Hour*
 1:00 3-1 *Make It Artsy*
 1:30 3-1 *Welcome to My Studio*
 2:00 3-1 *Beyond Your Backyard*
 2:30 3-1 *Weekends with Yankee*
 3:00 3-1 *Journeys in Japan*
 3:30 3-1 *Dining with the Chef*
 4:00 3-1 *In Good Shape: The Health Show*
 4:30 3-1 *Gzero World with Ian Bremmer*
 5:00 3-1 *Great Decisions in Foreign Policy*
 5:30 3-1 *Nightly Business Report*
 6:00 3-1 *PBS NewsHour*
 7:00 3-2 **Market to Market**
 3-1 *Washington Week*
 7:30 3-2 **Consuelo Mack Wealthtrack**
 3-1 *Firing Line with Margaret Hoover*
 8:00 3-2 **Washington Week**
 3-1 *Nova "Black Hole Apocalypse"*
 8:30 3-2 **Firing Line with Margaret Hoover**
 9:00 3-2 **Notre Dame: A Witness to History**
 3-1 *Nova "Black Hole Universe"*
 3-3 *This Old House Hour*
 10:00 3-2 **Masterpiece "Endeavour," Pt. 6**
 3-1 *Frontline "American Patriot"*
 3-3 *Woodwright's Shop*
 10:30 3-3 *Craftsman's Legacy*

11:00 3-1 *PBS NewsHour*
 3-3 *American Woodshop*
 11:30 3-2 **Life on the Line "Against All Odds"**
 3-3 *Joy of Painting*
 12:00 3-2 **PBS NewsHour**
 3-1 *Reveal*
 3-3 *Start Up*

Saturday 6th

6:00 3-2 **Classic Woodworking**
 "Hanging Tool Cabinet"
 6:30 3-2 **Woodsmith Shop "Scalloped Lid Box"**
 7:00 3-2 **Kevin Belton's New Orleans Kitchen "Croatia"**
 7:30 3-2 **America's Test Kitchen**
 8:00 3-2 **Martha Bakes "Grapes"**
 8:30 3-2 **Great British Baking Show**
 "Patisserie"
 9:30 3-2 **Motorweek**
 10:00 3-2 **P. Allen Smith's Garden Home**
 "It's Tulip Time"
 10:30 3-2 **J Schwanke's Life in Bloom**
 11:00 3-2 **Paint this with Jerry Yarnell**
 "African Cat Nap," Pt. 2
 3-1 *Steven Raichlen's Project Fire*
 11:30 3-2 **Joy of Painting "Southwest Serenity"**
 3-1 *Ask This Old House*
 12:00 3-2 **Beauty of Oil Painting "Nesting"**
 3-1 *This Old House*
 12:30 3-2 **Quilt in a Day "Liberty Star"**
 3-1 *This Old House*
 1:00 3-2 **Quilting Arts "Design"**
 3-1 *Ask This Old House*
 1:30 3-2 **Fons & Porter's Love of Quilting**
 "Twilight in the Garden"
 3-1 *Motorweek*
 2:00 3-2 **Creative Living**
 3-1 *Woodwright's Shop*
 2:30 3-2 **Jazzy Vegetarian "Bollywood Kitchen"**
 3-1 *Chef's Life*
 3:00 3-2 **Knit and Crochet Now "Rectangular Throw Pillows"**
 3-1 *Martha Stewart's Cooking School*
 3:30 3-2 **This Old House**
 3-1 *Martha Bakes*
 4:00 3-2 **Ask This Old House**
 3-1 *Rivers of Life "Mississippi"*
 4:30 3-2 **Welcome to My Studio**
 "Thalo Green"
 5:00 3-2 **Sewing with Nancy "Sew Simple with Rectangles & Squares"**
 3-1 *PBS NewsHour Weekend*
 5:30 3-2 **It's Sew Easy "Dress Up"**
 3-1 *Report from Santa Fe*
 6:00 3-2 **Report from Santa Fe**
 3-1 *Antiques Roadshow*
 6:30 3-2 **America's Heartland**
 7:00 3-2 **Lawrence Welk Show "Strike up the Band (1964)"**
 3-1 *Capitol Fourth*
 8:00 3-2 **Travel Detective "North Lake Tahoe"**
 8:30 3-2 **Red Green Show "Exit Stag Right"**
 3-1 *PBS Previews: Country Music*
 9:00 3-2 **Austin City Limits "Miranda Lambert"**
 3-1 *Kate*
 3-3 *Lawrence Welk Show*
 10:00 3-2 **Nova "Black Hole Apocalypse"**
 3-1 *Austin City Limits*
 3-3 *Classic Gospel*
 11:00 3-2 **Rivers of Life "Mississippi"**
 3-1 *Nova "Black Hole Apocalypse"*
 3-3 *Songs at the Center*
 11:30 3-3 *BSO 360*
 12:00 3-2 **Austin City Limits "Miranda Lambert"**
 3-1 *Nova "Black Hole Universe"*
 3-3 *Song of the Mountains*

Sunday 7th

6:00 3-2 **Painting and Travel "Dinosaur National Park"**

6:30 3-2 **Second Opinion "Irritable Bowel Syndrome"**
 7:00 3-2 **Antiques Roadshow "Vintage Denver"**
 8:00 3-2 **Classic Gospel "Sandi Patty"**
 9:00 3-2 **Joy of Music "Celebration of America"**
 9:30 3-2 **Music and the Spoken Word**
 10:00 3-2 **Notre Dame: A Witness to History**
 11:00 3-2 **Secrets of the Dead "Galileo's Moon"**
 3-1 *Washington Week*
 11:30 3-1 *New Mexico Colores*
 12:00 3-2 **New Mexico Colores**
 3-1 *Firing Line with Margaret Hoover*
 12:30 3-2 **In Focus**
 3-1 *Start Up "Grassroots Ranch"*
 1:00 3-1 *Consuelo Mack Wealthtrack*
 1:30 3-2 **Closer to Truth "What's Fine-Tuning in Cosmology?"**
 3-1 *Market to Market*
 2:00 3-2 **Masterpiece "Downton Abbey," Pt. 4**
 3-1 *Great Performances at the Met "La Fille Du Regiment"*
 3:00 3-2 **Gettysburg Story**
 4:00 3-2 **Classic Gospel "Sandi Patty"**
 4:30 3-1 *Historic Attacks Theatre: Apollo*
 5:00 3-2 **Start Up "Cheesy Effects"**
 3-1 *PBS NewsHour Weekend*
 5:30 3-2 **Travel Detective "Quintana"**
 3-1 *New Mexico Colores*
 6:00 3-2 **Secrets of the Dead "Galileo's Moon"**
 3-1 *Masterpiece "Poldark 4," Pt. 3*
 7:00 3-2 **Jamestown, Pt. 4**
 3-1 *Masterpiece "Endeavour," Pt. 6*
 8:00 3-2 **Masterpiece "Endeavour," Pt. 6**
 8:30 3-1 *Music Voyager*
 9:00 3-1 *POV "Call Her Ganda"*
 3-3 *Daytripper*
 9:30 3-2 **Frozen North – Sir Hubert's Forgotten Submarine Expedition**
 3-3 *America's Heartland*
 10:00 3-3 *This Old House*
 10:30 3-2 **Ol' Max Evans: The First Thousand Years**
 3-1 *Film School Shorts*
 3-3 *Ask This Old House*
 11:00 3-1 *Professor T*
 3-3 *Motorweek*
 11:30 3-3 *Legends of Airpower*
 12:00 3-2 **Nova "Black Hole Apocalypse"**
 3-1 *Masterpiece "Endeavour," Pt. 6*
 3-3 *Rivers of Life "Mississippi"*

Monday 8th

5:00 3-1 *Classical Stretch*
 5:30 3-1 *Wai Lana Yoga*
 6:00 3-1 *Rivers of Life "Mississippi"*
 7:00 3-1 *In the Americas with David Yetman*
 7:30 3-1 *Joseph Rosendo's Travelscope*
 8:00 3-1 *Rick Steve's Europe*
 8:30 3-1 *Nick Stellino: Storyteller in the Kitchen*
 9:00 3-1 *Pati's Mexican Table*
 9:30 3-1 *Kevin Belton's New Orleans Kitchen*
 10:00 3-1 *P. Allen Smith's Garden Home*
 10:30 3-1 *Jazzy Vegetarian*
 11:00 3-1 *Classical Stretch*
 11:30 3-1 *Sit and Be Fit*
 12:00 3-1 *Great British Baking Show*
 1:00 3-1 *Masterpiece "Endeavour," Pt. 6*
 2:30 3-1 *On Story*
 3:00 3-1 *Roadtrip Nation*
 3:30 3-1 *Curiosity Project*
 4:00 3-1 *America's Heartland*
 4:30 3-1 *Daytripper*
 5:00 3-1 *Scully/The World Show*
 5:30 3-1 *Nightly Business Report*
 6:00 3-1 *PBS NewsHour*
 7:00 3-2 **Antiques Roadshow "Out of this World"**
 3-1 *Notre Dame: A Witness to History*

8:00 3-2 American Experience
 "Chasing the Moon," Pt. 1
 3-1 Gettysburg Story
9:00 3-1 Antiques Roadshow
 3-3 Great British Baking Show
10:00 3-2 Art of a Cowboy "The Cross Three Ranch," Pt. 1
 3-1 Amanpour and Company
 3-3 Masterpiece "Endeavour," Pt. 6
10:30 3-2 Taste of History "Yorktown – The Last Battle"
11:00 3-2 Antiques Roadshow "Out of this World"
 3-1 PBS NewsHour
11:30 3-3 On Story
12:00 3-2 PBS NewsHour
 3-1 American Experience
 "Chasing the Moon," Pt. 1
 3-3 Gettysburg Story

Tuesday 9th

5:00 3-1 Classical Stretch
 5:30 3-1 Wai Lana Yoga
 6:00 3-1 Antiques Roadshow
 7:00 3-1 Gettysburg Story
 8:00 3-1 Shake-Up (in New Mexico)
 9:00 3-1 Innovations in Medicine
 9:30 3-1 Second Opinion
 10:00 3-1 Closer to Truth
 10:30 3-1 Stories of the Mind
 11:00 3-1 Classical Stretch
 11:30 3-1 Wai Lana Yoga
 12:00 3-1 Around the Farm Table
 12:30 3-1 Taste of History
 1:00 3-1 Masterpiece "Poldark 4," Pt. 3
 2:00 3-1 Gettysburg Story
 3:00 3-1 Antiques Roadshow
 4:00 3-1 Consuelo Mack Wealthtrack
 4:30 3-1 Start Up
 5:00 3-1 Firing Line with Margaret Hoover
 5:30 3-1 Nightly Business Report
 6:00 3-1 PBS NewsHour
7:00 3-2 American Experience "Space Men"
 3-1 American Experience
 "Chasing the Moon, Pt. 1
8:00 3-2 American Experience: Chasing the Moon," Pt. 2
 9:00 3-1 Jamestown, Pt. 4
 3-3 Antiques Roadshow
10:00 3-2 Shake-Up (in New Mexico)
 3-1 Amanpour and Company
 3-3 History Detectives
11:00 3-2 Amanpour and Company
 3-1 PBS NewsHour
 3-3 1964: The Fight for a Right
12:00 3-2 PBS NewsHour
 3-1 American Experience
 "Chasing the Moon, Pt. 1
 3-3 America's Heartland

Wednesday 10th

5:00 3-1 Classical Stretch
 5:30 3-1 Wai Lana Yoga
 6:00 3-1 Consuelo Mack Wealthtrack
 6:30 3-1 Scully/The World Show
 7:00 3-1 Travelogue China
 7:30 3-1 Expeditions with Patrick McMillan
 8:00 3-1 U.S. Marine Band: An All-Star Orchestra, Pt. 1
 9:00 3-1 Craftsman's Legacy
 9:30 3-1 Woodwright's Shop
 10:00 3-1 American Woodshop
 10:30 3-1 Woodsmith Shop
 11:00 3-1 Classical Stretch
 11:30 3-1 Sit and Be Fit
 12:00 3-1 Sara's Weeknight Meals
 12:30 3-1 Cook's Country
 1:00 3-1 Masterpiece "Downton Abbey 4," Pt. 3
 2:00 3-1 Notre Dame: A Witness to History
 3:00 3-1 New Scandinavian Cooking
 3:30 3-1 Neven's Irish Food Trails
 4:00 3-1 Lidia's Kitchen

4:30 3-1 America's Test Kitchen
 5:00 3-1 Story in the Public Square
 5:30 3-1 Nightly Business Report
 6:00 3-1 PBS NewsHour
7:00 3-2 Nova "Back to the Moon"
 3-1 American Experience
 "Chasing the Moon," Pt. 2
8:00 3-2 American Experience
 "Chasing the Moon," Pt. 3
 9:00 3-1 American Experience "Space Men"
 3-3 Start Up
 9:30 3-3 Music Voyager
10:00 3-2 Second Opinion "Shingles"
 3-1 Amanpour and Company
 3-3 Masterpiece "Downton Abbey," Pt. 3
10:30 3-2 This Old House
11:00 3-2 Amanpour and Company
 3-1 PBS NewsHour
 3-3 Wheels of Yesteryear: Touring with the Tin Lizzies
 11:30 3-3 Rick Steves' Europe
12:00 3-2 PBS NewsHour
 3-1 American Experience
 "Chasing the Moon," Pt. 2
 3-3 New Mexico Colores

Thursday 11th

5:00 3-1 Classical Stretch
 5:30 3-1 Wai Lana Yoga
 6:00 3-1 IQ: Smartparent
 6:30 3-1 Travels with Darley
 7:00 3-1 Selling Sunshine: The Florida Trains
 8:00 3-1 Antiques Roadshow
 9:00 3-1 Fons & Porter's Love of Quilting
 9:30 3-1 Quilt in a Day
 10:00 3-1 Knit and Crochet Now
 10:30 3-1 It's Sew Easy
 11:00 3-1 Classical Stretch
 11:30 3-1 Happy Yoga
 12:00 3-1 Christopher Kimball's Milk Street
 12:30 3-1 Simply Ming
 1:00 3-1 Mexico: One Plate at a Time
 1:30 3-1 Joanne Weir Gets Fresh
 2:00 3-1 American Experience "Space Men"
 3:00 3-1 Born to Explore
 3:30 3-1 Wheels of Yesteryear: Touring with the Tin Lizzies
 4:00 3-1 Nova "Back to the Moon"
 5:00 3-1 Americas Now
 5:30 3-1 Nightly Business Report
 6:00 3-1 PBS NewsHour
7:00 3-2 Shake-Up (In New Mexico)
 3-1 American Experience
 "Chasing the Moon," Pt. 3
8:00 3-2 Song of the Mountains
 "The Churchmen/Jeff Brown"
9:00 3-2 Today's Wild West "Rancho De La Osa"
 3-1 Creative Living
 3-3 Roadtrip Nation
9:30 3-2 Red Green Show "The Bigger the Better"
 3-1 Historic Attucks Theatre: Apollo
 3-3 Islands Without Cars
10:00 3-2 Woodsongs "Peter Rowan and J2B2"
 3-1 Amanpour and Company
 3-3 National Parks - Troubled Edens
11:00 3-2 Amanpour and Company
 3-1 PBS NewsHour
 3-3 Nova "Back to the Moon"
12:00 3-2 PBS NewsHour
 3-1 Masterpiece "Downton Abbey," Pt. 3
 3-3 Beyond Your Backyard

Friday 12th

5:00 3-1 Classical Stretch
 5:30 3-1 Wai Lana Yoga
 6:00 3-1 America's Heartland
 6:30 3-1 Garden Smart
 7:00 3-1 Song of the Mountains
 8:00 3-1 Sun Studio Sessions

8:30 3-1 Songs at the Center
 9:00 3-1 PBS Previews: Country Music
 9:30 3-1 Today's Wild West
 10:00 3-1 Joy of Painting
 10:30 3-1 Beauty of Oil Painting
 11:00 3-1 Classical Stretch
 11:30 3-1 Sit and Be Fit
 12:00 3-1 This Old House Hour
 1:00 3-1 Make It Artsy
 1:30 3-1 Welcome to My Studio
 2:00 3-1 Beyond Your Backyard
 2:30 3-1 Weekends with Yankee
 3:00 3-1 Journeys in Japan
 3:30 3-1 Dining with the Chef
 4:00 3-1 In Good Shape: The Health Show
 4:30 3-1 Gzero World with Ian Bremmer
 5:00 3-1 Great Decisions in Foreign Policy
 5:30 3-1 Nightly Business Report
 6:00 3-1 PBS NewsHour
7:00 3-2 Market to Market
 3-1 Washington Week
7:30 3-2 Consuelo Mack Wealthtrack
 3-1 Firing Line with Margaret Hoover
8:00 3-2 Washington Week
 3-1 Nova "Back to the Moon"
8:30 3-2 Firing Line with Margaret Hoover
9:00 3-2 Ol' Max Evans: The First Thousand Years
 3-1 Shake-Up (in New Mexico)
 3-3 This Old House Hour
 10:00 3-1 Amanpour and Company
 3-3 Woodwright's Shop
10:30 3-2 Masterpiece "Endeavour," Pt. 6
 3-3 Craftsman's Legacy
 11:00 3-1 PBS NewsHour
 3-3 American Woodshop
 11:30 3-3 Joy of Painting
12:00 3-2 PBS NewsHour
 3-1 Shake-Up (In New Mexico)
 3-3 Start Up

Saturday 13th

6:00 3-2 Garage with Steve Butler
 "Burgener Tool Box"
6:30 3-2 Woodsmith Shop "Horizontal Routing"
7:00 3-2 Kevin Belton's New Orleans Kitchen "Gone Fishin' "
7:30 3-2 America's Test Kitchen
8:00 3-2 Martha Bakes "Almonds"
8:30 3-2 Great British Baking "Chocolate"
9:30 3-2 Motorweek
10:00 3-2 P. Allen Smith's Garden Home
 "Super-Duper"
10:30 3-2 J. Schwanke's Life in Bloom
11:00 3-2 Paint This with Jerry Yarnell
 "African Cat Nap," Pt. 3
 3-1 Steven Raichlen's Project Fire
11:30 3-2 Joy of Painting "Rippling Waters"
 3-1 Ask This Old House
12:00 3-2 Beauty of Oil Painting "Magnolia"
 3-1 This Old House
12:30 3-2 Quilt in a Day "Bride's Bouquet and Brave World"
 3-1 This Old House
1:00 3-2 Quilting Arts "Birds of a Feather"
 3-1 Ask This Old House
1:30 3-2 Fons & Porter's Love of Quilting
 "Snail's Trail"
 3-1 Motorweek
2:00 3-2 Creative Living
 3-1 Woodwright's Shop
2:30 3-2 Jazzy Vegetarian "You Say Potato"
 3-1 Chef's Life
3:00 3-2 Knit and Crochet Now
 "Basic Baskets"
 3-1 Martha Stewart's Cooking School
3:30 3-2 This Old House
 3-1 Martha Bakes
4:00 3-2 Ask This Old House
 3-1 National Parks – Troubled Edens
4:30 3-2 Welcome to My Studio "Thalo Yellow Green"

5:00 3-2 Sewing with Nancy "Sew Simple with Rectangles & Square"
3-1 *PBS NewsHour Weekend*
5:30 3-2 It's Sew Easy "Step Up"
3-1 *Report from Santa Fe*
6:00 3-2 Report from Santa Fe
3-1 *Antiques Roadshow*
6:30 3-2 America's Heartland
7:00 3-2 Lawrence Welk Show "Gershwin"
3-1 **Ol' Max Evans: The First Thousand Years**
8:00 3-2 Travel Detective "Riviera Nayarit"
8:30 3-2 Red Green Show "Mad You Say"
3-1 *Wheels of Yesteryear: Touring with The Tin Lizzies*
9:00 3-2 Austin City Limits "James Bay/Rhiannon Giddens"
3-1 *Kate*
3-3 *Lawrence Welk Show*
10:00 3-2 Nova "Black Hole Universe"
3-1 *Austin City Limits*
3-3 *Classic Gospel*
11:00 3-2 Rivers of Life "The Nile"
3-1 *Nova "Back to the Moon"*
3-3 *Songs at the Center*
11:30 3-3 BSO 360
12:00 3-2 Austin City Limits "James Bay/Rhiannon Giddens"
3-1 *National Parks – Troubled Edens*
3-3 *Song of the Mountains*

Sunday 14th

6:00 3-2 Painting and Travel "American Egret"
6:30 3-2 Second Opinion "Mystery Diagnosis"
7:00 3-2 Antiques Roadshow "Out of this World"
8:00 3-2 Classic Gospel "Booth Brothers"
9:00 3-2 Joy of Music "Paris I"
9:30 3-2 Music and the Spoken Word
10:00 3-2 Life of a Universe with Brian Cox
11:00 3-2 Shake-Up (in New Mexico)
11:00 3-1 Washington Week
11:30 3-1 New Mexico Colores
12:00 3-2 New Mexico Colores
3-1 *Firing Line with Margaret Hoover*
12:30 3-2 In Focus
3-1 *Start Up "LFLS Shoes"*
1:00 3-1 Consuelo Mack Wealthtrack
1:30 3-2 Closer to Truth "What's Fine-Tuning in Physics?"
3-1 *Market to Market*
2:00 3-2 Masterpiece "Downton Abby 3," Pt. 5
3-1 *P. Allen's Garden Home "Homesteaders USA"*
2:30 3-1 J Schwanke's Life in Bloom
3:00 3-2 Civil War Songs and Stories
3-1 *Great British Baking Show*
4:00 3-2 Classic Gospel "Booth Brothers"
3-1 *Nova "Back to the Moon"*
5:00 3-2 Start Up "Alpaca the Candles"
3-1 *PBS Newshour Weekend*
5:30 3-2 Travel Detective "Mexico City"
3-1 *New Mexico Colores*
6:00 3-2 Rise of the Superheroes
3-1 *Masterpiece "Poldark 4," Pt. 4*
7:00 3-1 Masterpiece "Grantchester 4," Pt. 1
8:00 3-2 Masterpiece "Grantchester 4," Pt. 1
9:00 3-1 When We Were Apollo
3-3 *Daytripper*
9:30 3-3 America's Heartland
10:00 3-2 Life of a Universe with Brian Cox
3-3 *This Old House*
10:30 3-1 Film School Shorts
3-3 *Ask This Old House*
11:00 3-2 Inside Balmoral, Pt. 1
3-1 *Professor T*
3-3 *Motorweek*
11:30 3-3 Legends of Airpower
12:00 3-2 Nova "Black Hole Universe"
3-1 *Masterpiece "Grantchester 4," Pt. 1*
3-3 *American Experience "Space Men"*

Monday 15th

5:00 3-1 Classical Stretch
5:30 3-1 Wai Lana Yoga
6:00 3-1 National Parks – Troubled Edens
7:00 3-1 In the Americas with David Yetman
7:30 3-1 Joseph Rosendo's Travelscope
8:00 3-1 Rick Steve's Europe
8:30 3-1 Nick Stellino: Storyteller in the Kitchen
9:00 3-1 Pati's Mexican Table
9:30 3-1 Kevin Belton's New Orleans Celebration
10:00 3-1 P. Allen Smith's Garden Home
10:30 3-1 Jazzy Vegetarian
11:00 3-1 Classical Stretch
11:30 3-1 Sit and Be Fit
12:00 3-1 Great British Baking Show
1:00 3-1 Masterpiece "Grantchester 4," Pt. 1
3:00 3-1 Roadtrip Nation
3:30 3-1 Osiris Rex: Countdown to Launch
4:00 3-1 America's Heartland
4:30 3-1 Daytripper
5:00 3-1 Scully/The World Show
5:30 3-1 Nightly Business Report
6:00 3-1 PBS NewsHour
7:00 3-2 Antiques Roadshow "Vintage Houston 2019"
3-1 *Life of a Universe*
8:00 3-2 Awakening in Taos: The Mabel Dodge Luhan Story
3-1 *Civil War Songs and Stories*
9:00 3-2 POV "Bisbee '17"
3-1 *Antiques Roadshow*
3-3 *Great British Baking Show*
10:00 3-1 Amanpour and Company
3-3 *Masterpiece "Grantchester 4," Pt. 1*
11:00 3-2 Antiques Roadshow "Vintage Houston 2019"
3-1 *PBS NewsHour*
12:00 3-2 PBS NewsHour
3-1 *POV "Bisbee '17"*
3-3 *Civil War Songs and Stories*

Tuesday 16th

5:00 3-1 Classical Stretch
5:30 3-1 Wai Lana Yoga
6:00 3-1 Antiques Roadshow
7:00 3-1 Civil War Songs and Stories
8:00 3-1 Turn the Page
9:00 3-1 Innovations in Medicine
9:30 3-1 Second Opinion
10:00 3-1 Closer to Truth
10:30 3-1 Stories of the Mind
11:00 3-1 Classical Stretch
11:30 3-1 Wai Lana Yoga
12:00 3-1 Around the Farm Table
12:30 3-1 Taste of History
1:00 3-1 Masterpiece "Poldark 4," Pt. 4
2:00 3-1 Civil War Songs and Stories
3:00 3-1 Antiques Roadshow
4:00 3-1 Consuelo Mack Wealthtrack
4:30 3-1 Start Up
5:00 3-1 Firing Line with Margaret Hoover
5:30 3-1 Nightly Business Report
6:00 3-1 PBS NewsHour
7:00 3-2 American Experience "Chasing the Moon," Pt. 1
3-1 *Reconnecting Roots*
7:30 3-1 Art of a Cowboy, Pt. 1
8:00 3-1 Ol' Max Evans: The First Thousand Years
9:00 3-2 You Should Know
3-3 *Antiques Roadshow*
9:30 3-2 Creative Living
3-1 *PBS Previews: Country Music*
10:00 3-2 Joy of AI
3-1 *Amanpour and Company*
3-3 *History Detectives*
11:00 3-2 Amanpour and Company
3-1 *PBS NewsHour*
3-3 *Reconnecting Roots*

11:30 3-3 Art of a Cowboy, Pt. 1
12:00 3-2 PBS NewsHour
3-1 *American Experience* "Chasing the Moon," Pt. 1
3-3 *America's Heartland*

Wednesday 17th

5:00 3-1 Classical Stretch
5:30 3-1 Wai Lana Yoga
6:00 3-1 Consuelo Mack Wealthtrack
6:30 3-1 Scully/The World Show
7:00 3-1 Travelogue China
7:30 3-1 Expeditions with Patrick McMillan
8:00 3-1 U.S. Marine Band: An All-Star Orchestra Special, Pt. 2
9:00 3-1 Craftsman's Legacy
9:30 3-1 Woodwright's Shop
10:00 3-1 Garage with Steve Butler, Pt. 1
10:30 3-1 Woodsmith Shop
11:00 3-1 Classical Stretch
11:30 3-1 Sit and Be Fit
12:00 3-1 Sara's Weeknight Meals
12:30 3-1 Cook's Country
1:00 3-1 Masterpiece "Downton Abbey," Pt. 4
2:00 3-1 Inside Balmoral, Pt. 1
3:00 3-1 New Scandinavian Cooking
3:30 3-1 Neven's Irish Food Trails
4:00 3-1 Lidia's Kitchen
4:30 3-1 America's Test Kitchen
5:00 3-1 Story in the Public Square
5:30 3-1 Nightly Business Report
6:00 3-1 PBS NewsHour
7:00 3-2 Year in Space
3-1 *American Experience* "Chasing the Moon," Pt. 1
8:00 3-2 8 Days: To the Moon and Back
9:00 3-1 Year in Space
3-3 *Start Up*
9:30 3-2 POV Shorts "Earthrise"
3-3 *Music Voyager*
10:00 3-2 Second Opinion "ALS"
3-1 *Amanpour and Company*
3-3 *Masterpiece "Downton Abbey," Pt. 4*
10:30 3-2 This Old House
11:00 3-2 Amanpour and Company
3-1 *PBS NewsHour*
3-3 *Learning to Drive*
11:30 3-3 Rick Steves' Europe "Libson"
12:00 3-2 PBS NewsHour
3-1 *8 Days: To the Moon and Back*
3-3 *New Mexico Colores*

Thursday 18th

5:00 3-1 Classical Stretch
5:30 3-1 Wai Lana Yoga
6:00 3-1 IQ: Smartparent
6:30 3-1 Travels with Darley
7:00 3-1 20th Century Limited
8:00 3-1 Antiques Roadshow
9:00 3-1 Fons & Porter's Love of Quilting
9:30 3-1 Quilt in a Day
10:00 3-1 Knit and Crochet Now!
10:30 3-1 It's Sew Easy
11:00 3-1 Classical Stretch
11:30 3-1 Happy Yoga
12:00 3-1 Christopher Kimball's Milk Street
12:30 3-1 Simply Ming
1:00 3-1 Mexico: One Plate at a Time
1:30 3-1 Joanne Weir's Plates and Places
2:00 3-1 Year in Space
3:00 3-1 Born to Explore
3:30 3-1 Lively One: Dick Brannan's Rise to Drag Racing Fame
4:00 3-1 Nova "Apollo's Daring Mission"
5:00 3-1 Americas Now
5:30 3-1 Nightly Business Report
6:00 3-1 PBS NewsHour
7:00 3-2 Joy of AI
3-1 *Song of the Mountains*
8:00 3-2 Song of the Mountains "Newberry & Compton/Jeff Little Trio"
3-1 *Red Green Show*

8:30 3-1 *You Should Know*
 9:00 3-2 **Art of a Cowboy** "The Cross Three Ranch," Pt. 1
 3-1 *Creative Living*
 3-3 *Roadtrip Nation*
 9:30 3-2 **Red Green Show** "The Big Retreat"
 3-1 *Reconnecting Roots*
 3-3 *Islands Without Cars*
 10:00 3-2 **Woodsongs** "Six String Soldier and Pentagon Winds"
 3-1 *Amanpour and Company*
 3-3 *8 Days: To the Moon and Back*
 11:00 3-2 **Amanpour and Company**
 3-1 *PBS NewsHour*
 11:30 3-3 *POV Shorts "Earthrise"*
 12:00 3-2 **PBS NewsHour**
 3-1 *Masterpiece "Downton Abbey," Pt. 4*
 3-3 *Beyond Your Backyard*

Friday 19th

5:00 3-1 *Classical Stretch*
 5:30 3-1 *Wai Lana Yoga*
 6:00 3-1 *America's Heartland*
 6:30 3-1 *Garden Smart*
 7:00 3-1 *Song of the Mountains*
 8:00 3-1 *Sun Studio Sessions*
 8:30 3-1 *Songs at the Center*
 9:00 3-1 *Reconnecting Roots*
 9:30 3-1 *Today's Wild West*
 10:00 3-1 *Joy of Painting*
 10:30 3-1 *Beauty of Oil Painting*
 11:00 3-1 *Classical Stretch*
 11:30 3-1 *Sit and Be Fit*
 12:00 3-1 *This Old House Hour*
 1:00 3-1 *Make It Artsy*
 1:30 3-1 *Welcome to My Studio*
 2:00 3-1 *Beyond Your Backyard*
 2:30 3-1 *Weekends with Yankee*
 3:00 3-1 *Journeys in Japan*
 3:30 3-1 *Dining with the Chef*
 4:00 3-1 *In Good Shape: The Health Show*
 4:30 3-1 *Gzero World with Ian Bremmer*
 5:00 3-1 *Great Decisions in Foreign Policy*
 5:30 3-1 *Nightly Business Report*
 6:00 3-1 *PBS NewsHour*
 7:00 3-2 **Market to Market**
 3-1 *Washington Week*
 7:30 3-2 **Consuelo Mack Wealthtrack**
 3-1 *Firing Line with Margaret Hoover*
 8:00 3-2 **Washington Week**
 3-1 *Nova "Apollo's Daring Mission"*
 8:30 3-2 **Firing Line with Margaret Hoover**
 9:00 3-2 **Life of a Universe**
 3-1 *Joy of AI*
 3-3 *This Old House Hour*
 10:00 3-2 **Masterpiece** "Grantchester 4," Pt. 1
 3-1 *Amanpour and Company*
 3-3 *Woodwright's Shop*
 10:30 3-3 *Craftsman's Legacy*
 11:00 3-1 *PBS NewsHour*
 3-3 *Garage with Steve Butler, Pt. 1*
 11:30 3-3 *Joy of Painting*
 12:00 3-2 **PBS NewsHour**
 3-1 *Dream with Me*
 3-3 *Start Up*

Saturday 20th

6:00 3-2 **Garage with Steve Butler, Pt. 2**
 "Foosball"
 6:30 3-2 **Woodsmith Shop**
 "Mortising Jig & Box Assembly"
 7:00 3-2 **Kevin Belton's New Orleans Kitchen** "Pecans- Louisiana's Favorite Nut"
 7:30 3-2 **America's Test Kitchen**
 "Latin Summer Favorites"
 8:00 3-2 **Martha Bakes** "Pantry Milks"
 8:30 3-2 **Great British Baking** "The Final"
 9:30 3-2 **Motorweek**
 10:00 3-2 **P. Allen Smith's Garden Home**
 "Cooking"

10:30 3-2 **J. Schwanke's Life in Bloom**
 11:00 3-2 **Paint This with Jerry Yarnell**
 "African Cat Nap," Pt. 4
 3-1 *Steven Raichlen's Project Smoke*
 11:30 3-2 **Joy of Painting** "Mystic Mountains"
 3-1 *Art of a Cowboy, Pt. 1*
 12:00 3-2 **Beauty of Oil Painting** "Golden Rose"
 3-1 *This Old House*
 12:30 3-2 **Quilt in a Day** "Finishing with Swag Border"
 3-1 *This Old House*
 1:00 3-2 **Quilting Arts** "A Little Different"
 3-1 *Ask This Old House*
 1:30 3-2 **Fons & Porter's Love of Quilting**
 "Pops of Poinsettia"
 3-1 *Motorweek*
 2:00 3-2 **Creative Living**
 3-1 *Garage with Steve Butler, Pt. 1*
 2:30 3-2 **Jazzy Vegetarian** "Dinner at Eight"
 3-1 *Chef's Life*
 3:00 3-2 **Knit and Crochet Now**
 "Winter Wonderland"
 3-1 *Martha Stewart's Cooking School*
 3:30 3-2 **This Old House**
 3-1 *Martha Bakes*
 4:00 3-2 **Ask This Old House**
 3-1 *Year in Space*
 4:30 3-2 **Welcome to My Studio**
 "Burnt Umber"
 5:00 3-2 **Sewing with Nancy** "No-Hassle Triangles Quilt Blocks"
 3-1 *PBS NewsHour Weekend*
 5:30 3-2 **It's Sew Easy** "Top Details"
 3-1 *Report from Santa Fe*
 6:00 3-2 **Report from Santa Fe**
 3-1 *Antiques Roadshow*
 6:30 3-2 **America's Heartland**
 7:00 3-2 **Lawrence Welk Show** "From Polkas to Classics (1967)"
 3-1 *Rise of the Superheroes*
 8:00 3-2 **Travel Detective** "Sydney"
 8:30 3-2 **Red Green Show** "No Place Like the Home"
 9:00 3-2 **Austin City Limits** "Khalid/Mac Demarco"
 3-1 *Kate*
 3-3 *Lawrence Welk Show*
 10:00 3-2 **Nova** "Back to the Moon"
 3-1 *Austin City Limits*
 3-3 *Classic Gospel*
 11:00 3-2 **Kingdoms of the Sky** "Himalaya"
 3-1 *8 Days: To the Moon and Back*
 3-3 *Songs at the Center*
 11:30 3-3 *BSO 360*
 12:00 3-2 **Austin City Limits**
 "Khalid/Mac Demarco"
 3-3 *Song of the Mountains*

Sunday 21st

6:00 3-2 **Painting and Travel**
 "The Ponce De Leon Hotel"
 6:30 3-2 **Second Opinion** "The Future of Cancer Treatment"
 7:00 3-2 **Antiques Roadshow** "Vintage Tulsa"
 8:00 3-2 **Classic Gospel** "The Goodmans"
 9:00 3-2 **Joy of Music**
 9:30 3-2 **Music and the Spoken Word**
 10:00 3-2 **Big Ben: Saving the World's Most Famous Clock, Pt. 1**
 11:00 3-2 **Liberty & Slavery: The Paradox of America's Founding Fathers**
 11:00 3-1 *Washington Week*
 11:30 3-1 *New Mexico Colores*
 12:00 3-2 **New Mexico Colores**
 3-1 *Firing Line with Margaret Hoover*
 12:30 3-2 **In Focus**
 3-1 *Start Up*
 1:00 3-1 *Consuelo Mack Wealthtrack*
 1:30 3-2 **Closer to Truth** "Is the Anthropic Principle Significant?"
 3-1 *Market to Market*

2:00 3-2 **Masterpiece** "Downton Abby," Pt.6
 3-1 *P. Allen Smith's Garden Home*
 2:30 3-1 *J. Schwanke's Life in Bloom*
 3:00 3-1 *Great British Baking Show*
 4:00 3-2 **Classic Gospel** "The Goodmans"
 3-1 *"Apollo's Daring Mission"*
 5:00 3-2 **Start Up** "Strikes an Adventurous Pose"
 3-1 *PBS Newshour Weekend*
 5:30 3-2 **Travel Detective** "Egypt"
 3-1 *New Mexico Colores*
 6:00 3-2 **Big Ben: Saving the World's Most Famous Clock, Pt. 1**
 3-1 *Masterpiece "Poldark 4," Pt. 5*
 7:00 3-2 **Jamestown, Pt. 5**
 3-1 *Masterpiece "Grantchester 4," Pt. 2*
 8:00 3-2 **Masterpiece** "Grantchester 4," Pt. 2
 3-1 *Big Ben: Saving the World's Most Famous Clock, Pt. 1*
 9:00 3-2 **Big Ben: Saving the World's Most Famous Clock, Pt. 1**
 3-1 *POV "Bisbee '17"*
 3-3 *Daytripper*
 9:30 3-3 *America's Heartland*
 10:00 3-2 **Notre Dame: A Witness to History**
 3-3 *This Old House*
 10:00 3-3 *Ask This Old House*
 11:00 3-2 **Inside Balmoral, Pt. 2**
 3-1 *Professor T*
 3-3 *Motorweek*
 11:30 3-3 *Legends of Airpower*
 12:00 3-2 **Nova** "Back to the Moon"
 3-1 *Masterpiece "Grantchester 4," Pt. 2*
 3-3 *Year in Space*

Monday 22nd

5:00 3-1 *Classical Stretch*
 5:30 3-1 *Wai Lana Yoga*
 6:00 3-1 *Year in Space*
 7:00 3-1 *In the Americas with David Yetman*
 7:30 3-1 *Joseph Rosendo's Travelscope*
 8:00 3-1 *Rick Steve's Europe*
 8:30 3-1 *Nick Stellino: Storyteller in the Kitchen*
 9:00 3-1 *Pati's Mexican Table*
 9:30 3-1 *Kevin Belton's New Orleans Kitchen*
 10:00 3-1 *P. Allen Smith's Garden Home*
 10:30 3-1 *Jazzy Vegetarian*
 11:00 3-1 *Classical Stretch*
 11:30 3-1 *Sit and Be Fit*
 12:00 3-1 *Great British Baking Show*
 1:00 3-1 *Masterpiece "Grantchester 4," Pt. 2*
 2:00 3-1 *Historic Attacks Theatre: Apollo*
 2:30 3-1 *On Story*
 3:00 3-1 *Roadtrip Nation*
 3:30 3-1 *Project Asteroid: Mapping Bennu*
 4:00 3-1 *America's Heartland*
 4:30 3-1 *Daytripper*
 5:00 3-1 *Scully/The World Show*
 5:30 3-1 *Nightly Business Report*
 6:00 3-1 *PBS NewsHour*
 7:00 3-2 **Antiques Roadshow** "Bismarck"
 3-1 *8 Days: To the Moon and Back*
 8:00 3-2 **PBS Previews: Country Music**
 8:30 3-2 **P.O.V. "On Her Shoulders"**
 3-1 *POV "Earthrise"*
 9:00 3-1 *Antiques Roadshow*
 3-3 *Great British Baking Show*
 9:30 3-2 **PBS Previews: Country Music**
 10:00 3-2 **Art of a Cowboy** "Mark Boaldin: The One-Man Ranch," Pt. 2
 3-1 *Amanpour and Company*
 3-3 *Masterpiece "Grantchester 4," Pt. 2*
 10:30 3-2 **Taste of History** "The Mummies: Pistols, Parasols and Parades"
 11:00 3-2 **Antiques Roadshow** "Bismarck"
 3-1 *PBS NewsHour*
 3-3 *Historic Attacks Theatre: Apollo*
 11:30 3-3 *On Story*

12:00 3-2 PBS NewsHour
 3-1 POV "On Her Shoulders"
 3-3 From Gershwin to Garland-
 A Musical Journey

Tuesday 23rd

5:00 3-1 Classical Stretch
 5:30 3-1 Wai Lana Yoga
 6:00 3-1 Antiques Roadshow
 7:00 3-1 Songs to Keep: Treasures
 of an Adirondack Folk Collector
 8:00 3-1 Parent's Survival Guide:
 Childhood
 9:00 3-1 Innovations in Medicine
 9:30 3-1 Second Opinion
 10:00 3-1 Closer to Truth
 10:30 3-1 Stories of the Mind
 11:00 3-1 Classical Stretch
 11:30 3-1 Wai Lana Yoga
 12:00 3-1 Jamie's Quick & Easy Food
 12:30 3-1 Taste of History
 1:00 3-1 Masterpiece "Poldark 4," Pt. 5
 2:00 3-1 Big Ben: Saving the World's
 Most Famous Clock, Pt. 1
 3:00 3-1 Antiques Roadshow
 4:00 3-1 Consuelo Mack Wealthtrack
 4:30 3-1 Start Up
 5:00 3-1 Firing Line with Margaret Hoover
 5:30 3-1 Nightly Business Report
 6:00 3-1 PBS NewsHour
 7:00 3-2 American Experience
 "Chasing the Moon," Pt. 2
 3-1 Reconnecting Roots
 7:30 3-1 Art of a Cowboy, Pt. 2
 8:00 3-1 Year in Space
 9:00 3-2 You Should Know
 3-1 Jamestown, Pt. 5
 3-3 Antiques Roadshow
 9:30 3-2 Creative Living
 10:00 3-2 Liberty & Slavery: The Paradox of
 America's Founding Fathers
 3-1 Amanpour and Company
 3-3 History Detectives
 11:00 3-2 Amanpour and Company
 3-1 PBS NewsHour
 3-3 Reconnecting Roots
 11:30 3-3 Art of a Cowboy, Pt. 2
 12:00 3-2 PBS NewsHour
 3-1 American Experience
 "Chasing the Moon," Pt. 2
 3-3 America's Heartland

Wednesday 24th

5:00 3-1 Classical Stretch
 5:30 3-1 Wai Lana Yoga
 6:00 3-1 Consuelo Mack Wealthtrack
 6:30 3-1 Scully/The World Show
 7:00 3-1 Travelogue China
 7:30 3-1 Expeditions with Patrick McMillan
 8:00 3-1 U.S. Marine Band: An All-Star
 Orchestra Special, Pt. 3
 9:30 3-1 Woodwright's Shop
 10:00 3-1 Garage with Steve Butler, Pt. 2
 10:30 3-1 Woodsmith Shop
 11:00 3-1 Classical Stretch
 11:30 3-1 Sit and Be Fit
 12:00 3-1 Sara's Weeknight Meals
 12:30 3-1 Cook's Country
 1:00 3-1 Masterpiece "Downton Abbey," Pt. 5
 2:00 3-1 Inside Balmoral, Pt. 2
 3:00 3-1 New Scandinavian Cooking
 3:30 3-1 Neven's Irish Food Trails
 4:00 3-1 Lidia's Kitchen
 4:30 3-1 America's Test Kitchen
 5:00 3-1 Story in the Public Square
 5:30 3-1 Nightly Business Report
 6:00 3-1 PBS NewsHour
 7:00 3-2 Ancient Skies "Gods and
 Monsters," Pt. 1
 3-1 American Experience
 "Chasing the Moon," Pt. 2

8:00 3-2 Nova "The Planets: Inner Worlds"
 9:00 3-2 Nova "The Planets: Mars"
 3-1 Ancient Skies, Pt. 1
 3-3 Start Up
 9:30 3-3 Music Voyager
 10:00 3-2 Second Opinion "Irritable Bowel
 Syndrome (IBS)"
 3-1 Amanpour and Company
 3-3 Masterpiece "Downton Abbey," Pt. 5
 10:30 3-2 This Old House
 11:00 3-2 Amanpour and Company
 3-1 PBS NewsHour
 3-3 Unlikely Friendship
 11:30 3-3 Rick Steves' Europe
 "Portugal's Heartland"
 12:00 3-2 PBS NewsHour
 3-1 Nova "The Planets: Inner Worlds"
 3-3 New Mexico Colores

Thursday 25th

5:00 3-1 Classical Stretch
 5:30 3-1 Wai Lana Yoga
 6:00 3-1 IQ: Smartparent
 6:30 3-1 Travels with Darley
 7:00 3-1 National Parks - Beyond the
 Crowds
 8:00 3-1 Antiques Roadshow
 9:00 3-1 Fons & Porter's Love of Quilting
 9:30 3-1 Quilt in a Day
 10:00 3-1 Knit and Crochet Now
 10:30 3-1 It's Sew Easy
 11:00 3-1 Classical Stretch
 11:30 3-1 Happy Yoga
 12:00 3-1 Christopher Kimball's Milk Street
 12:30 3-1 Simply Ming
 1:00 3-1 Mexico: One Plate at a Time
 1:30 3-1 Joanne Weir's Plates and Places
 2:00 3-1 Ancient Skies, Pt. 1
 3:00 3-1 Nova "The Planets: Inner Worlds"
 4:00 3-1 Nova "The Planets: Mars"
 5:00 3-1 Americas Now
 5:30 3-1 Nightly Business Report
 6:00 3-1 PBS NewsHour
 7:00 3-2 Frozen North: Sir Hubert's
 Forgotten Submarine Expedition
 3-1 Song of the Mountains
 8:00 3-2 Song of the Mountains
 "Carolina Blue/Moron Brothers"
 3-1 Red Green Show
 8:30 3-1 You Should Know
 9:00 3-2 Art of a Cowboy "Mark Boaldin:
 The One-Man Ranch," Pt. 2
 3-1 Creative Living
 3-3 Roadtrip Nation
 9:30 3-2 Red Green Show "Rites of
 Passage"
 3-1 Reconnecting Roots
 3-3 Islands Without Cars
 10:00 3-2 Woodsongs
 "Linkin' Bridge and Run Boy Run"
 3-1 Amanpour and Company
 3-3 Ancient Skies, Pt. 1
 11:00 3-2 Amanpour and Company
 3-1 PBS NewsHour
 3-3 Year in Space
 12:00 3-2 PBS NewsHour
 3-1 Masterpiece "Downton Abbey," Pt. 5
 3-3 Beyond Your Backyard

Friday 26th

5:00 3-1 Classical Stretch
 5:30 3-1 Wai Lana Yoga
 6:00 3-1 America's Heartland
 6:30 3-1 Garden Smart
 7:00 3-1 Song of the Mountains
 8:00 3-1 Sun Studio Sessions
 8:30 3-1 Songs at the Center
 9:00 3-1 Reconnecting Roots
 9:30 3-1 Today's Wild West
 10:00 3-1 Joy of Painting

10:30 3-1 Beauty of Oil Painting
 11:00 3-1 Classical Stretch
 11:30 3-1 Sit and Be Fit
 12:00 3-1 This Old House Hour
 1:00 3-1 Make It Artsy
 1:30 3-1 Welcome to My Studio
 2:00 3-1 Beyond Your Backyard
 2:30 3-1 Weekends with Yankee "The
 Coasts"
 3:00 3-1 Journeys in Japan
 3:30 3-1 Dining with the Chef
 4:00 3-1 In Good Shape: The Health Show
 4:30 3-1 Gzero World with Ian Bremmer
 5:00 3-1 Great Decisions in Foreign Policy
 5:30 3-1 Nightly Business Report
 6:00 3-1 PBS NewsHour
 7:00 3-2 Market to Market
 3-1 Washington Week
 7:30 3-2 Consuelo Mack Wealthtrack
 3-1 Firing Line with Margaret Hoover
 8:00 3-2 Washington Week
 3-1 Nova "The Planets: Inner Worlds"
 8:30 3-2 Firing Line with Margaret Hoover
 9:00 3-2 Shake-Up (In New Mexico)
 3-1 Nova "The Planets: Mars"
 3-3 This Old House Hour
 10:00 3-2 Masterpiece "Grantchester 4," Pt. 2
 3-1 Amanpour and Company
 3-3 Woodwright's Shop
 10:30 3-3 Craftsman's Legacy
 11:00 3-2 Joy of AI
 3-1 PBS NewsHour
 3-3 Garage with Steve Butler, Pt. 2
 11:30 3-3 Joy of Painting
 12:00 3-2 PBS NewsHour
 3-1 America First: Legacy of
 an Immigrant Raid
 3-3 Start Up

Saturday, 27th

6:00 3-2 Garage with Steve Butler, Pt. 3
 "Mallet & Hand Plane"
 6:30 3-2 Woodsmith Shop "Tray
 Centerpiece and Table Saw Sleds"
 7:00 3-2 Kevin Belton's New Orleans
 Kitchen "Latin America Meets Nola"
 7:30 3-2 America's Test Kitchen
 "Pork Two Ways"
 8:00 3-2 Martha Bakes "Berries"
 8:30 3-2 Great British Baking Show
 "Masterclass," Pt. 1
 9:30 3-2 Motorweek
 10:00 3-2 P. Allen Smith's Garden Home
 "Crystal Bridges, American Dreams"
 10:30 3-2 J Schwanke's Life in Bloom
 "Protea: Long-Term Beauty"
 11:00 3-2 Paint This with Jerry Yarnell
 "African Cat Nap," Pt. 5
 3-1 Steven Raichlen's Project Fire
 11:30 3-2 Joy of Painting "New Day's Dawn"
 3-1 Art of the Cowboy, Pt. 2
 12:00 3-2 Beauty of Oil Painting "Winter
 Cardinal"
 3-1 This Old House
 12:30 3-2 Quilt in a Day "Quick Trip"
 3-1 This Old House
 1:00 3-2 Quilting Arts "Start with White"
 3-1 Ask This Old House
 1:30 3-2 Fons & Porter's Love of Quilting
 "Sharing Traditions"
 3-1 Motorweek
 2:00 3-2 Creative Living
 3-1 Garage with Steve Butler, Pt. 2
 2:30 3-2 Jazzy Vegetarian "Kid's Classics
 Made Vegan"
 3-1 Chef's Life
 3:00 3-2 Knit and Crochet Now
 "Slouchy Hats"
 3-1 Martha Stewart's Cooking School
 3:30 3-2 This Old House
 3-1 Martha Bakes

4:00 3-2 **Ask This Old House**
3-1 *Ancient Skies, Pt. 1*

4:30 3-2 **Welcome to My Studio** "Burnt Sienna"

5:00 3-2 **Sewing with Nancy** "No Hassle Triangles Quilt Blocks"
3-1 *PBS NewsHour Weekend*

5:30 3-2 **It's Sew Easy** "Shape Up"
3-1 *Report from Santa Fe*

6:00 3-2 **Report from Santa Fe**
3-1 *Antiques Roadshow*

6:30 3-2 **America's Heartland**

7:00 3-2 **Lawrence Welk Show** "Henry Mancini-Johnny Mercer (1973)"
3-1 *Awakening in Taos: The Mabel Dodge Luhan Story*

8:00 3-2 **Travel Detective** "Hidden Gems of Oahu"
3-1 *Symphony in D*

8:30 3-2 **Red Green Show** "Flying Blind"

9:00 3-2 **Austin City Limits**
"Cyndi Lauper"
3-1 *Front and Center*
3-3 *Lawrence Welk Show*

10:00 3-2 **Nova** "The Planets: Inner Worlds," Pt. 1
3-1 *Austin City Limits*
3-3 *Classic Gospel*

11:00 3-2 **Ancient Skies, Pt. 1**
3-1 *Nova "The Planets: Inner Worlds"*
3-3 *Songs at the Center*

11:30 3-3 *BSO 360*

12:00 3-2 **Austin City Limits** "Cyndi Lauper"
3-1 *Nova "The Planets: Mars"*
3-3 *Song of the Mountains*

Sunday 28th

6:00 3-2 **Painting and Travel**
"Journey to Titanic"

6:30 3-2 **Second Opinion** "Angina"

7:00 3-2 **Antiques Roadshow** "Bismarck"

8:00 3-2 **Classic Gospel** "Give the World a Smile"

9:00 3-2 **Joy of Music** "Sights & Sounds of Budapest"

9:30 3-2 **Music and the Spoken Word**

10:00 3-2 **Big Ben: Saving the World's Most Famous Clock, Pt. 2**

11:00 3-2 **Awakening in Taos: The Mabel Dodge Luhan Story**
3-1 *Washington Week*
3-1 *New Mexico Colores*

11:30 3-1 *New Mexico Colores*

12:00 3-2 **New Mexico Colores**
3-1 *Firing Line with Margaret Hoover*

12:30 3-2 **In Focus**
3-1 *Start Up*
1:00 3-1 *Consuelo Mack Wealthtrack*

1:30 3-2 **Closer to Truth** "What's Strong Emergence?"
3-1 *Market to Market*

2:00 3-2 **Masterpiece** "Downton Abbey 3," Pt. 7
3-1 *P. Allen Smith's Garden Home*
2:30 3-1 *Growing a Greener World*
3:00 3-1 *Great British Baking Show*

4:00 3-2 **Classic Gospel**
"Give the World a Smile"
3-1 *Joy of AI*

5:00 3-2 **Start Up** "Don't Horse Around with the Chocolate"
3-1 *PBS Newshour Weekend*

5:30 3-2 **Travel Detective** "Hidden Gems of North Lake Tahoe"
3-1 *New Mexico Colores*

6:00 3-2 **Big Ben: Saving the World's Most Famous Clock, Pt. 2**
3-1 *Masterpiece "Poldark 4," Pt. 6*

7:00 3-2 **Jamestown, Pt. 6**
3-1 *Masterpiece "Grantchester 4," Pt. 3*

8:00 3-2 **Masterpiece** "Grantchester 4," Pt. 3
3-1 *Big Ben: Saving the World's Most Famous Clock, Pt. 2*

9:00 3-2 **Big Ben: Saving the World's Most Famous Clock, Pt. 2**
3-1 *POV "On Her Shoulders"*
3-3 *Daytripper*

9:30 3-3 *America's Heartland*

10:00 3-2 **Illusions in Stone** (emeralds)
3-3 *This Old House*

10:30 3-1 *Film School Shorts*
3-2 *Ask This Old House*

11:00 3-2 **Inside Balmoral, Pt.3**
3-1 *Professor T*
3-3 *Motorweek*

11:30 3-3 *Legends of Airpower*

12:00 3-2 **Nova** "The Planets: Mars"
3-1 *Masterpiece "Grantchester 4," Pt. 3*
3-3 *Ancient Skies, Pt. 1*

Monday 29th

5:00 3-1 *Classical Stretch*

5:30 3-1 *Wai Lana Yoga*

6:00 3-1 *Ancient Skies, Pt. 1*

7:00 3-1 *In the Americas with David Yetman*

7:30 3-1 *Joseph Rosendo's Travelscope*

8:00 3-1 *Rick Steve's Europe*

8:30 3-1 *Nick Stellino: Storyteller in the Kitchen*

9:00 3-1 *Pati's Mexican Table*

9:30 3-1 *Kevin Belton's New Orleans Kitchen*

10:00 3-1 *P. Allen Smith's Garden Home*

10:30 3-1 *Jazzy Vegetarian*

11:00 3-1 *Classical Stretch*

11:30 3-1 *Sit and Be Fit*

12:00 3-1 *Great British Baking Show*

1:00 3-1 *Masterpiece "Grantchester 4," Pt. 3*

2:00 3-1 *Rise of the Superheroes*

4:00 3-1 *America's Heartland*

4:30 3-1 *Daytripper*

5:00 3-1 *Scully/The World Show*

5:30 3-1 *Nightly Business Report*

6:00 3-1 *PBS NewsHour*

7:00 3-2 **Antiques Roadshow**
"Providence 2019"
3-1 *Space Chase USA*

8:00 3-2 **Rise of the Superheroes**
3-1 *Illusions in Stone (emeralds)*

9:00 3-1 *Antiques Roadshow*
3-3 *Great British Baking Show*

10:00 3-2 **Art of a Cowboy** "American Quarter Horse Association," Pt. 3
3-1 *Amanpour and Company*
3-3 *Masterpiece "Grantchester 4," Pt. 3*

10:30 3-2 **Taste of History** "Coffee Past, Present & Future"

11:00 3-2 **Antiques Roadshow**
"Providence 2019"
3-1 *PBS NewsHour*
3-3 *Awakening in Taos: The Mable Dodge Luhan Story*

12:00 3-2 **PBS NewsHour**
3-1 *POV "Inventing Tomorrow"*
3-3 *Illusions in Stone (emeralds)*

Tuesday 30th

5:00 3-1 *Classical Stretch*

5:30 3-1 *Wai Lana Yoga*

6:00 3-1 *Antiques Roadshow*

7:00 3-1 *Force for Nature: Lucy Braun*

8:00 3-1 *Debaquey*

9:00 3-1 *Innovations in Medicine*

9:30 3-1 *Second Opinion*

10:00 3-1 *Closer to Truth*

10:30 3-1 *Stories of the Mind*

11:00 3-1 *Classical Stretch*

11:30 3-1 *Wai Lana Yoga*

12:00 3-1 *Jamie's Quick & Easy Food*

12:30 3-1 *Taste of History*

1:00 3-1 *Masterpiece "Poldark 4," Pt. 6*

2:00 3-1 *Big Ben: Saving the World's Most Famous Clock, Pt. 2*

3:00 3-1 *Antiques Roadshow*

4:00 3-1 *Consuelo Mack Wealthtrack*

4:30 3-1 *Start Up*

5:00 3-1 *Firing Line with Margaret Hoover*

5:30 3-1 *Nightly Business Report*

6:00 3-1 *PBS NewsHour*

7:00 3-2 **American Experience**
"Chasing the Moon," Pt. 3
3-1 *Reconnecting Roots*

7:30 3-1 *Art of a Cowboy, Pt. 3*

8:00 3-1 *Beyond a Year in Space*

9:00 3-2 **You Should Know**
3-1 *Jamestown, Pt. 6*
3-3 *Antiques Roadshow*

9:30 3-2 **Creative Living**

10:00 3-2 **Civil War Songs and Stories**
3-1 *Amanpour and Company*
3-3 *History Detectives*

11:00 3-2 **Amanpour and Company**
3-1 *PBS NewsHour*
3-3 *Reconnecting Roots*

11:30 3-3 *Art of a Cowboy, Pt. 3*

12:00 3-2 **PBS NewsHour**
3-1 *American Experience*
"Chasing the Moon," Pt. 3
3-3 *America's Heartland*

Wednesday 31st

5:00 3-1 *Classical Stretch*

5:30 3-1 *Wai Lana Yoga*

6:00 3-1 *Consuelo Mack Wealthtrack*

6:30 3-1 *Scully/The World Show*

7:00 3-1 *Travelogue China*

7:30 3-1 *Expeditions with Patrick McMillan*

8:00 3-1 *Space Chase USA*

9:00 3-1 *Craftsman's Legacy*

9:30 3-1 *Woodwright's Shop*

10:00 3-1 *Garage with Steve Butler, Pt. 3*

10:30 3-1 *Woodsmith Shop*

11:00 3-1 *Classical Stretch*

11:30 3-1 *Sit and Be Fit*

12:00 3-1 *Sara's Weeknight Meals*

12:30 3-1 *Cook's Country*

1:00 3-1 *Masterpiece "Downton Abbey 4," Pt. 6*

2:00 3-1 *Inside Balmoral, Pt. 3*

3:00 3-1 *New Scandinavian Cooking*

3:30 3-1 *Neven's Irish Food Trails*

4:00 3-1 *Lidia's Kitchen*

4:30 3-1 *America's Test Kitchen*

5:00 3-1 *Story in the Public Square*

5:30 3-1 *Nightly Business Report*

6:00 3-1 *PBS NewsHour*

7:00 3-2 **Ancient Skies** "Finding the Center," Pt. 2
3-1 *American Experience*
"Chasing the Moon," Pt. 3

8:00 3-2 **Nova** "The Planets: Jupiter"

9:00 3-2 **Illusions in Stone** (emeralds)
3-1 *Ancient Skies, Pt. 2*
3-3 *Start Up*

9:30 3-3 *Music Voyager*

10:00 3-2 **Second Opinion** "Psoriasis"
3-1 *Amanpour and Company*
3-3 *Masterpiece "Downton Abbey 4," Pt. 6*

10:30 3-2 **This Old House**

11:00 3-2 **Amanpour and Company**
3-1 *PBS NewsHour*
3-3 *Joseph Rosendo's Travelscope*

11:30 3-3 *Rick Steve's Europe*

12:00 3-2 **PBS NewsHour**
3-1 *Nova "The Planets: Jupiter"*
3-3 *New Mexico Colores*

KENW/KMTH-FM LOG

KENW-FM, Portales, NM, 89.5 MHz — KMTH-FM, Maljamar, NM, 98.7 MHz — KENM-FM, Tucumcari, NM, 88.9 MHz — KENU-FM, Des Moines, NM, 88.5 MHz — KENG-FM, Ruidoso, NM, 88.5 MHz — KENE-FM, Raton, NM, 88.1 MHz

Translators: Apache Springs, 90.9 MHz; Clayton, 93.5 MHz; Des Moines, 106.1 MHz; Ft. Sumner, 91.7 MHz; Las Vegas, 88.1 MHz; Roswell, 91.1 MHz; Wagon Mound, 92.1 MHz.

Sundays

8:00 a.m. WITH HEART AND VOICE
 Jul 7 Festive Music for Summer
 Jul 14 All French All the Time
 Jul 21 Hymns – and More Hymns!
 Jul 28 Summer Chilling
9:00 a.m. FOOTLIGHT PARADE
 Jul 7 Food, Glorious Food
 Jul 14 Put it There, Pal
 Jul 21 1957 on Stage
 Jul 28 All I Want
10:00 a.m. RADIO LAB
 Jul 7 Earth Oddities
 Jul 14 Saving Animals
 Jul 21 3 Questions
 Jul 28 Blood
11:00 a.m. FRESH AIR WEEKEND
12:00 p.m. PEOPLE'S PHARMACY
1:00 p.m. THIS AMERICAN LIFE
2:00 p.m. FREAKONOMICS
 Jul 7 How to Win Games and Beat People
 Jul 14 Why Rent Control Doesn't Work
 Jul 21 23 and Me (and You, and Everyone Else)
 Jul 28 TBA
3:00 p.m. MOUNTAIN STAGE
 Jul 7 Guest-Host Peter Mulvey – The Wood Brothers; Todd Snider; Kat Wright; Dave Alvin & Jimmie Dale Gilmore
 Jul 14 Hiss Golden Messenger; Kris Delmhurst; Nicki Bluhm; Teddy Thompson; The Parachute Brigade
 Jul 21 Jeff Daniels and the Ben Daniels Band; Dawn Landes; Lucy Wainwright Roche; The Handsome Family; Kevin Gordon
 Jul 28 Special Guest-Host Bil Lepp – Kathy Mattea; Darin & Brooke Aldridge; Joe Newberry; Blue Yonder
5:00 p.m. CELTIC CONNECTIONS
6:00 p.m. ALL THINGS CONSIDERED
7:00 p.m. SANTA FE CHAMBER MUSIC FESTIVAL
 Jul 7 MOZART: Adagio & Rondo in c for Celesta, Flute, Oboe, Viola & Cello
 BRAHMS: String Sextet in G
 Jul 14 VILLA-LOBOS: Choro No. 5 for Piano, "Alma brasileira"
 SCHUBERT: String Quartet in G
 Jul 21 HAYDN: String Quartet in f
 MOZART: Clarinet Quintet in A
 Jul 28 DOHNANYI: Serenade in C for Violin, Viola & Cello
 MENDELSSOHN: String Quartet in f
8:00 p.m. CENTERSTAGE FROM WOLF TRAP
 Jul 7 FRANCK: Sonata for Violin & Piano in A
 ST. JOHN/HERSKOWITZ: Adanaco
 KENNEDY: Czardashian Rhapsody
 GRIEG: Sonata for Piano & Cello in a
 Jul 14 STRAUSS: Sonata in F
 GRIEG: Sonata for Piano & Cello in a

Jul 21 HANDY: Beale Street Blues
 MONTEVERDI: Orfeo
 J.S. BACH: Toccata and Fugue
 TOVEY: Santa Barbara Suite
 HANDEL: Saints/Halleluja
 REVEULTAS: Musica de Feria
 Jul 28 GINASTERA: String Quartet No. 2
 VILLA-LOBOS: String Quartet No. 1
 PIAZZOLLA: Four for Tango
 DEBUSSY: String Quartet in g;
 Assez vif et bien rythme
9:00 p.m. THE ROMANTIC HOUR
 Jul 7 Love Letters of Dylan Thomas
 Jul 14 A Variety of Contemporary Poets
 Jul 21 Anais Nin
 Jul 28 Dylan Thomas Part 2
10:00 p.m. WEEKEND PERFORMANCE TODAY
11:00 p.m. MUSIC OUT OF THE NIGHT AND INTO THE MORNING until 5:00 a.m. when **Morning Edition** begins.

Mondays

7:00 p.m. CHICAGO SYMPHONY ORCHESTRA
 Jul 1 American Music with Bramwell Tovey and Thomas Hampson
 Jul 8 RACHMANINOV: Piano Concerto No. 3 in D
 BRAHMS: Symphony No. 2 in D
 MUSSORGSKY/SHOSTAKOVICH: Two Excerpts from *Khovanshchina*
 SCHOENBERG: *Kol Nidre*
 Jul 15 TCHAIKOVSKY: *Manfred* Symphony
 WAGNER: Overture to *Rienzi*
 NIELSON: Symphony No. 4
 Jul 22 RESPIGHI: *Fountains of Rome*; *Concerto Gregoriano*
 TCHAIKOVSKY: Symphony No. 6 in b
 DVORAK: *Carnival Overture*
 Jul 29 BEETHOVEN: *Coriolan Overture*; Piano Concerto No. 5 in E-Flat
 DVORAK: Symphony No. 7 in d
 BRAHMS: *Tragic Overture*
9:00 p.m. PERFORMANCE TODAY
11:00 p.m. MUSIC OUT OF THE NIGHT AND INTO THE MORNING until 5:00 a.m. when **Morning Edition** begins.

Tuesdays

7:00 p.m. NEW YORK PHILHARMONIC
 Jul 2 NIELSON: Flute Concerto; Violin Concerto
 TCHAIKOVSKY: Symphony No. 2, "Little Russian"
 Jul 9 IVES: Holidays Symphony
 COPLAND: *Lincoln Portrait*
 BLITZTEIN: *Airborne Symphony*
 Jul 16 COPLAND: Concerto for Clarinet, Strings, Harp & Piano
 BARBER: Violin Concerto
 BOLCOM: Trombone Concerto
 ADOLPHE: *Unearth, Release!*
 MOZART: Flute Concerto No. 2 in D

Jul 23 SHOSTAKOVICH/BARSHAI: Chamber Symphony
 BEETHOVEN: Symphony No. 3, "Eroica"
 Jul 30 ADAMS: *The Wound-Dresser*
 BRAHMS: Tragic Overture; Symphony No. 1 in c
9:00 p.m. PERFORMANCE TODAY
11:00 p.m. MUSIC OUT OF THE NIGHT AND INTO THE MORNING until 5:00 a.m. when **Morning Edition** begins.

Wednesdays

7:00 p.m. LOS ANGELES PHILHARMONIC
 Jul 3 SALONEN: LA Variations
 BEETHOVEN: Concerto for Violin, Cello, and Piano in C
 NORMAN: *Sustain*
 Jul 10 REICH: *Music for Ensemble and Orchestra*
 MAHLER: Symphony No. 5
 Jul 17 CERRONE: *The Insects Became Magnetic*
 POULENC: Organ Concerto
 BACH: Fugue in g
 SAINT-SAENS: Symphony No. 3 in c
 Jul 24 THOMAS: Four Preludes on *Playthings of the Wind*
 TCHAIKOVSKY: Symphony No. 6 in b
 Jul 31 BRAHMS: Piano Concerto No. 1 in d; Symphony No. 1 in c
 CHOPIN: Etude No. 3 in E
9:00 p.m. PERFORMANCE TODAY
11:00 p.m. MUSIC OUT OF THE NIGHT AND INTO THE MORNING until 5:00 a.m. when **Morning Edition** begins.

Thursdays

7:00 p.m. COLLECTORS' CORNER with HENRY FOGEL
 Jul 4 BACH/STOKOWSKI: Fugue in g "Little"
 ELGAR: Enigma Variations
 BEETHOVEN: Symphony No. 5
 BRAHMS: Symphony No. 2
 BERLIOZ: Roman Carnival Overture
 Jul 11 BRAHMS: Academic Festival Overture
 SHOSTAKOVICH: Symphony No. 10
 SIBELIUS: Symphony No. 2
 MUSSORGSKY: *Night on Bald Mountain*
 Jul 18 WAGNER: *Gotterdammerung*: Immolation
 BEETHOVEN: Symphony No. 7
 TCHAIKOVSKY: *Romeo and Juliet*
 DE FALLA: *El Amor Brujo*
 GIORDANO: *Andrea Chenier*
 LISZT: Mephisto Waltz
 Jul 25 The Art of Mezzo-Soprano Irma Kolassi
9:00 p.m. PERFORMANCE TODAY

11:00 p.m. MUSIC OUT OF THE NIGHT AND INTO THE MORNING until 5:00 a.m. when **Morning Edition** begins.

Fridays

7:00 p.m. CONCIERTO
8:00 p.m. FIESTA! With ELBIO BARILARI
 Jul 5 Esta Tierra Es Mi Tierra: Latino Composers Reflect on the American Experience
 Jul 12 Fiesta CD Grab Bag
 Jul 19 Mexican Violin
 Jul 26 Paquito D'Rivera Visits Fiesta!
9:00 p.m. PERFORMANCE TODAY
11:00 p.m. MUSIC OUT OF THE NIGHT AND INTO THE MORNING until 5:00 a.m. when **People's Pharmacy** begins.

Saturdays

8:00 a.m. BEST OF CAR TALK
9:00 a.m. WAIT WAIT DON'T TELL ME
10:00 a.m. THE BIONEERS: Revolution from the Heart of Nature
10:30 a.m. NEW LETTERS ON THE AIR

11:00 a.m. THE ROYAL OPERA
 Jul 6 BRITTEN: *Billy Budd*
 Jul 13 GIORDANO: *Andrea Chenier*
11:00 a.m. OPERAS FROM RAI, ITALY
 Jul 20 ROSSINI: *Adina*
 Jul 27 GLUCK: *Orfeo et Euridice*
12:30 p.m. MET OPERA
 Jul 27 The Metropolitan Opera National Council Grand Finals Concert
3:00 p.m. CLASSICAL GUITAR ALIVE!
4:00 p.m. LIVE FROM HERE WITH CHRIS THILE
 Jul 6 From Durham Performing Arts Center in Durham, NC: Guests: Death Cab for Cutie, Tank and the Bangas, Nore Davis
 Jul 13 From Symphony Center in Chicago, IL: Guests: Jason Isbell, Eighth Blackbird, Kurt Braunohler
 Jul 20 Live from Green Music Center, Rohnert Park, CA: Guests: The Tallest Man on Earth, Lulu Miller, Gaby Moreno


Jul 27 From the Ryman Auditorium in Nashville, TN: Guests: The Del McCoury Band, Julien Baker, Nate Bargatze
7:00 p.m. SWINGIN' DOWN THE LANE
 Jul 6 Desert Island 85: Ray Roberson
 Jul 13 Doris Day Memorial
 Jul 20 Close Encounters 3
 Jul 27 Hit Songs of 1927
8:00 p.m. JAZZ NIGHT
9:00 p.m. JAZZ AT 100
 Jul 6 Beyond Category – Duke Ellington in the 1930's
 Jul 13 Chick Webb & Benny Goodman
 Jul 20 Billie Holliday and Ella Fitzgerald
 Jul 27 The Entertainers – Louis Armstrong, Cab Calloway and Lionel Hampton
10:00 p.m. DREAMFARM RADIO
11:00 p.m. MUSIC OUT OF THE NIGHT AND INTO THE MORNING until 6:00 a.m. when **Weekend Edition** begins




FM Radio Week-at-a-Glance

	Sunday	Monday	Tuesday	Wednesday	Thursday	Friday	Saturday	Monday through Friday
5:00	Travel with Rick Steves	Morning Edition	Morning Edition	Morning Edition	Morning Edition	Morning Edition	5:00 a.m. People's Pharmacy	Regional News: 5:31, 6:31, and 7:31 a.m. Weather: 5:18, 6:18, and 7:18 a.m.
6:00	Weekend Edition						6:00 a.m. Weekend Edition	
7:00								
8:00	With Heart and Voice	Music News & Features	Music News & Features	Music News & Features	Music News & Features	Music News & Features	8:00 a.m. Car Talk	8:01 Marketplace Report
9:00	Footlight Parade						9:00 a.m. Wait, Wait... Don't Tell Me	8:15 Kindness Moment
10:00	Radiolab						10:00 a.m. Bioneers	8:20 Nature Notes (Tu)
11:00	Fresh Air Weekend with Terry Gross						10:30 a.m. New Letters	Travelers in the Night (W)
12:00	People's Pharmacy (R)						11:00 a.m. Opera	8:30 Health in a Heartbeat
1:00	This American Life						2:30 p.m. Nothing Funny About Money (when length of opera permits)	8:45 Insight
2:00	Freakonomics						3:00 p.m. Classical Guitar	9:00 Weather/News
3:00	Mountain Stage	Here & There with David Marash	Best of Knowledge	51 Percent	With Good Reason	Says You!	4:00 p.m. Live from Here	9:05 New Mexico Close Up
3:30								9:15 Marketplace Tech Report
4:00		Marketplace	Marketplace	Marketplace	Marketplace	Marketplace		9:20 A Southwest Spotlight (F)
4:30								9:30 Disability Awareness
5:00	Celtic Connections	All Things Considered	All Things Considered	All Things Considered	All Things Considered	All Things Considered		9:45 Fitness Minute/EarthDate
6:00	All Things Considered	PBS NewsHour	PBS NewsHour	PBS NewsHour	PBS NewsHour	PBS NewsHour		10:00 Weather/News/Regional News
7:00	Santa Fe Chamber Music	Chicago Symphony Orchestra	New York Philharmonic	Los Angeles Philharmonic	Collectors' Corner	Concierto with Frank Dominguez		10:15 Engines of Our Ingenuity
8:00	Center Stage at Wolf Trap					Fiesta! with Elbio Barilari		10:30 Composers' Datebook
9:00	The Romantic Hours	Performance Today	Performance Today	Performance Today	Performance Today	Performance Today		10:45 News Feature
10:00	Performance Today							11:00 Weather/News
11:00	Classical Music Out of the Night until 5:00 a.m.	Classical Music Out of the Night until 5:00 a.m.	Classical Music Out of the Night until 5:00 a.m.	Classical Music Out of the Night until 5:00 a.m.	Classical Music Out of the Night until 5:00 a.m.	Classical Music Out of the Night until 5:00 a.m. when People's Pharmacy begins.		11:15 Melinda's Garden Moment
								11:30 Pulse of the Planet
								11:45 Climate Connections / Current Cast
								12:00 Weather/News/Regional News
								12:15 Community Calendar
								12:30 Moment in Time
								12:45 People's Pharmacy News (M)
								Poetry Now (T)
								A Touch on Nature (W)
								Medical Discoveries News (Th)
								Science and the Sea (F)
								1:00 Weather/News
								1:15 Sound Beat
								1:30 Loh Down on Science
								1:45 StarDate
								2:00 Weather/News/Regional News
								2:15 Bird Note
								2:20 A Southwest Spotlight (W)
								2:30 American Storyteller
								2:45 90 Second Naturalist
								3:00 Weather/News
								3:06 Innovation Now/Fitness Minute
								3:15 The Plant Detective
								4:50 & 5:50 p.m. Weather
								5:20 New Mexico Close-up
								5:30 Regional News
								6:57 StarDate/Weather
								9:00 Weather/News
								12:00/3:00 a.m. Weather/News

BUSINESS FRIENDS



Taylor Water Well Service
Water Well Drilling
Pump Sales & Service
Clim Taylor
Carlsbad, NM
Live from Here, FM
Wait, Wait...Don't Tell Me, FM
Radio Lab, FM




Las Vegas, NM
Insight
Weekend Programming, FM



Roswell, NM
Nature,
Nightly Business Report,
Star Gazers




Pharmacy... At your Service
Portales, NM
Fitness Minute,
Classical Guitar Alive, FM
Mt. Stage, FM



Portales, NM
Antiques Roadshow




Clovis, Portales, NM
Austin City Limits




Portales, NM
Nova



Clovis Community College
Cultural Art Series
Primetime Programming, TV



Roswell, NM
Classic Gospel




Clovis, Eunice, Hagerman,
Hobbs, Portales, Roswell
Austin City Limits



Evening News/Public Affairs
BBC World News
News 3 New Mexico




Roswell, NM
Morning Edition, FM
Jazz Programming, FM



Portales, NM
Morning Edition, FM
All Things Considered, FM
Weekend Programming, FM




Telephone Book
Evening News/Public Affairs
Programming
News 3 New Mexico



Portales, NM
Austin City Limits



Farmers' Electric Cooperative,
Inc. of New Mexico
Clovis, NM
Ask This Old House




Las Cruces, NM
America's Heartland



Roswell, NM
Piano Jazz, FM
Jazz Programming, FM



Clovis and Portales
Wait, Wait...Don't Tell Me, FM




Ruidoso, NM
Morning Edition, FM



Farwell, TX
Antiques Roadshow

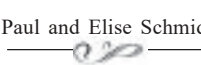


Open Every Day Except
Christmas
Carlsbad, NM
Austin City Limits,
Nature, PBS NewsHour




Portales, NM
Pharmacy... At your Service
Antiques Roadshow,
Health related programs,
Report from Santa Fe,
Sportslook

**This space
could be yours!**
For Underwriting opportunities,
please call toll-free
(888) 367-5369. Ask for
Rena for TV, Amie for FM.




PBS NewsHour
Washington Week




Clovis, NM
P. Allen Smith's Garden to Table



Las Vegas, NM
Dateline NM, FM
Weekend Programming, FM



Attorneys at Law
Roswell, NM
Evening Symphony, FM
All Things Considered, FM



Dexter and Roswell, NM
America's Heartland



Roswell, NM
American Experience,
Masterpiece,
Nova, PBS NewsHour

When to watch from A to Z

Channel 3-1 – July 2019

Amanpour and Company – Mondays-Fridays, 10:00 p.m. (except 4th, 5th)
American Woodshop – Wednesdays, 10:00 a.m. (ends 10th)
Americas Now – Thursdays, 5:00 p.m.
America's Heartland – Mondays, 4:00 p.m.; Fridays, 6:00 a.m.
America's Test Kitchen – Wednesdays, 4:30 p.m.
Antiques Roadshow – Mondays, 9:00 p.m.;
 Tuesdays, 6:00 a.m./3:00 p.m.; Thursdays, 8:00 a.m.;
 Saturdays, 6:00 p.m.
Around the Farm Table – Tuesdays, 12:00 noon (ends 16th)
Ask This Old House – Saturdays, 11:30 a.m. (ends 13th)/1:00 p.m.
Austin City Limits – Saturdays, 10:00 p.m.
Beauty of Oil Painting – Fridays, 10:30 a.m.
Beyond Your Backyard – Fridays, 2:00 p.m.
Born to Explore – Thursdays, 3:00 p.m. (except 4th, 25th)
Chef's Life – Saturdays, 2:30 p.m.
Christopher Kimball's Milk Street TV – Thursdays, 12:00 noon
Classical Stretch – Mondays-Fridays, 5:00 a.m./11:00 a.m.
Closer to Truth – Tuesdays, 10:00 a.m.
Consuelo Mack Wealthtrack – Sundays, 1:00 p.m.;
 Tuesdays, 4:00 p.m.; Wednesdays, 6:00 a.m.
Cook's Country – Wednesdays, 12:30 p.m.
Craftsman's Legacy – Wednesdays, 9:00 a.m.
Creative Living – Thursdays, 9:00 p.m.
Daytripper – Mondays, 4:30 p.m.
Dining with the Chef – Fridays, 3:30 p.m.
Expeditions with Patrick McMillan – Wednesdays, 7:30 a.m.
Film School Shorts – Sundays, 10:30 p.m. (except 21st)
Firing Line with Margaret Hoover – Fridays, 7:30 p.m.;
 Sundays, 12:00 noon; Tuesdays, 5:00 p.m.
Fons & Porter's Love of Quilting – Thursdays, 9:00 a.m.
Front and Center – Saturdays, 9:00 p.m. (begins 27th)
Frontline "American Patriot" – Friday, 5th, 10:00 p.m.
Garden Smart – Fridays, 6:30 a.m.
Great British Baking Show – Sundays, 3:00 p.m. (except 7th);
 Mondays, 12:00 noon
Great Decisions in Foreign Policy – Fridays, 5 p.m.
Growing a Greener World – Sunday, 28th, 2:30 p.m. (begins 28th)

Gzero World with Ian Bremmer – Fridays, 4:30 p.m.
Happy Yoga with Sarah Starr – Thursdays, 11:30 a.m.
In Good Shape – The Health Show – Fridays, 4:00 p.m.
In The Americas with David Yetman – Mondays, 7:00 a.m.
Innovations in Medicine – Tuesdays, 9:00 a.m.
IQ: Smartparent – Thursdays, 6:00 a.m.
It's Sew Easy – Thursdays, 10:30 a.m.
J Schwanke's Life in Bloom – Sundays, 2:30 p.m. (except 7th, ends 28th)
Jamestown – Tuesdays, 9:00 p.m. (except 16th)
Jamie's Quick & Easy Food – Tuesdays, 12:00 p.m. (begins 23rd)
Jazzy Vegetarian – Mondays, 10:30 a.m.
Joanne Weir Gets Fresh – Thursdays, 1:30 p.m.
Joseph Rosendo's Travelscope – Mondays, 7:30 a.m.
Journeys in Japan – Fridays, 3:00 p.m.
Joy of Painting – Fridays, 10:00 a.m.
Kate – Saturdays, 9:00 p.m. (ends 20th)
Kevin Belton's New Orleans Celebrations – Mondays, 9:30 a.m.
Knit and Crochet Now – Thursdays, 10:00 a.m.
Lidia's Kitchen – Wednesdays, 4:00 p.m.
Make It Artsy – Fridays, 1:00 p.m.
Market to Market – Sundays, 1:30 p.m.
Martha Bakes – Saturdays, 3:30 p.m.
Martha Stewart's Cooking School – Saturdays, 3:00 p.m.
Mexico – Once Plate at a Time – Thursdays, 1:00 p.m.
Masterpiece –
 "Downton Abbey" – Wednesdays, 1:00 p.m.
 "Poldark Season 4" – Sundays, 6:00 p.m.; Tuesdays, 1:00 p.m.
 "Endeavour Season 6" – Sunday, 7th, 7:00 p.m. (ends);
 Monday, 1st and 8th, 1:00 p.m. (ends)
 "Grantchester Season 4" – Sundays, 7:00 p.m. (begins 14th);
 Mondays, 1:00 p.m. (begins 15th)
Motorweek – Saturdays, 1:30 p.m.
Music Voyager – Sunday, 7th, 8:30 p.m.
Neven's Irish Food Trails – Wednesdays, 3:30 p.m.
New Mexico Colores – Sundays, 5:30 p.m.
New Scandinavian Cooking – Wednesdays, 3:00 p.m.
Nick Stellino: Storyteller in the Kitchen – Mondays, 8:30 a.m.
Nightly Business Report – Mondays – Fridays, 5:30 p.m.



Channel 3-1 Programs continued

Nova –

"Black Hole Apocalypse" – Thursday, 4th, 3:00 p.m.;
Friday, 5th, 8:00 p.m.; Saturday, 6th, 11:00 p.m.

"Black Hole Universe" – Thursday, 4th, 4:00 p.m.;
Friday, 5th, 9:00 p.m.

"Back to the Moon" – Thursday, 11th, 4:00 p.m.;
Friday, 12th, 8:00 p.m.; Saturday, 13th, 11:00 p.m.;
Sunday, 14th, 4:00 p.m.

"Apollos's Daring Mission" – Thursday, 18th, 4:00 p.m.;
Friday, 19th, 8:00 p.m.; Sunday, 21st, 4:00 p.m.

"The Planets: Inner Worlds" (Pt. 1) – Thursday, 25th, 3:00 p.m.;
Friday, 26th, 8:00 p.m.; Saturday, 27th, 11:00 p.m.

"The Planets: Mars" (Pt. 2) – Thursday, 25th, 4:00 p.m.;
Friday, 26th, 9:00 p.m.

On Story – Mondays, 2:30 p.m. (except 15th, 29th)

P. Allen Smith's Garden Home – Sundays, 2:00 p.m. (except 7th);
Mondays, 10:00 a.m.

Pati's Mexican Table – Mondays, 9:00 a.m.

PBS Newshour – Mondays – Fridays, 6:00 p.m./11:00 p.m.

PBS Newshour Weekend – Saturdays and Sundays, 5:00 p.m.

Professor T – Sundays, 11:00 p.m.

Quilt in A Day – Thursdays, 9:30 a.m.

Reconnecting Roots – Tuesdays, 7:00 p.m. (begins 16th);

Thursdays, 9:30 p.m. (begins 18th); Fridays, 9:00 a.m. (begins 19th)

Red Green Show – Thursdays, 8:00 p.m. (except 11th)

Report from Santa Fe – Saturdays, 5:30 p.m.

Reveal – Tuesday, 2nd, 8:00 p.m.

Rick Steves' Europe – Mondays, 8:00 a.m.

Roadtrip Nation – Mondays, 3:00 p.m. (except 29th)

Sara's Weeknight Meals – Wednesdays, 12:00 noon

Scully/The World Show – Mondays, 5:00 p.m.; Wednesdays, 6:30 a.m.

Second Opinion – Tuesdays, 9:30 a.m.

Simply Ming – Thursdays, 12:30 p.m.

Sit and Be Fit – Mondays/Wednesdays/Fridays, 11:30 a.m.

Song of the Mountains – Thursdays, 7:00 p.m. (begins 18th);
Fridays, 7:00 a.m.

Songs at the Center – Fridays, 8:30 a.m.

Start Up – Tuesdays, 4:30 p.m.; Sundays, 12:30 p.m.

Steven Raichlen's Project Smoke – Saturdays, 11:00 a.m.

Stories of the Mind – Tuesdays, 10:30 a.m.

Story in the Public Square – Wednesdays, 5:00 p.m.

Sun Studio Sessions – Fridays, 8:00 a.m.

Taste of History – Tuesdays, 12:30 p.m.

This Old House – Saturdays, 12:00 noon/12:30 p.m.

This Old House Hour – Fridays, 12:00 noon

Today's Wild West – Fridays, 9:30 a.m.

Travelogue China – Wednesdays, 7:00 a.m.

Travels with Darley – Thursdays, 6:30 a.m.

Urban Conversion – Monday, 1st, 3:30 p.m.

Wai Lana Yoga – Mondays – Fridays, 5:30 a.m.; Tuesdays, 11:30 a.m.

Washington Week – Fridays, 7:00 p.m.; Sundays, 11:00 a.m.

Weekends with Yankee – Fridays, 2:30 p.m.

Welcome to My Studio – Fridays, 1:30 p.m.

Woodsmith Shop – Wednesdays, 10:30 a.m.

Woodwright's Shop – Saturdays, 2:00 p.m. (ends 13th);
Wednesdays, 9:30 a.m.

You Should Know – Thursdays, 8:30 p.m. (except 11th)

Awakening in Taos: The Mabel Dodge Luhan Story –
Saturday, 27th, 7:00 p.m.

Backs Against the Wall: The Howard Thurman Story –
Monday, 1st, 8:00 p.m.; Tuesday, 2nd, 2:00 p.m.

Beyond a Year in Space – Tuesday, 30th, 8:00 p.m.

Big Ben: Saving the World's Most Famous Clock (2 Pts.) –
Sundays, 8:00p.m. (begins 21st); Tuesdays, 2:00 p.m.(begins 23rd)

Capitol Fourth – Thursday, 4th, 9:30 p.m.; Saturday, 6th, 7:00 p.m.

Civil War Songs and Stories – Monday, 15th, 8:00 p.m.;
Tuesday, 16th, 7:00 a.m./2:00 p.m.

Curiosity Project – Monday, 8th, 3:30 p.m.

Debakey – Tuesday, 30th, 8:00 a.m.

Force for Nature: Lucy Braun – Tuesday, 30th, 7:00 a.m.

Frozen North - Sir Hubert's Forgotten Submarine Expedition –
Wednesday, 3rd, 7:00 p.m.; Thursday, 4th, 7:00 a.m.

F.S. Key and the Song that Built America – Wednesday, 3rd, 8:00 a.m.
Garage with Steve Butler (10 pts.) –
Wednesdays, 10:00 a.m. (begins 17th);

Saturdays, 2:00 p.m. (begins 20th)

Gettysburg Story – Monday, 8th, 8:00 p.m.;

Tuesday, 9th, 7:00 a.m./2:00 p.m.

Great Performances at the Met "La Fille Du Regiment" –
Sunday, 7th, 2:00 p.m.

Historic Attucks Theatre: Apollo of the South – Sunday, 7th, 4:30 p.m.;
Thursday, 11th, 9:30 p.m.; Monday, 22nd, 2:00 p.m.

Illusions in Stone (emeralds) – Monday, 29th, 8:00 p.m.

Inside Balmoral (3 Pts.) – Wednesdays, 2:00 p.m. (begins 17th)

Joy of AI – Friday, 19th, 9:00 p.m.; Sunday, 28th, 4:00 p.m.

Liberty & Slavery: The Paradox of America's Founding Fathers –
Tuesday, 2nd, 7:00 a.m.

Life of a Universe with Brian Cox – Monday, 15th, 7:00 p.m.

Live Art: Love – Tuesday, 2nd, 8:00 a.m.

Lively One: Dick Brannan's Rise to Drag Racing Fame –
Thursday, 18th, 3:30 p.m.

National Parks – Troubled Edens – Monday, 1st, 7:00 p.m.;

Saturday, 13th, 4:00 p.m.; Monday, 15th, 6:00 a.m.

National Parks – Beyond the Crowds – Thursday, 25th, 7:00 a.m.

Notre Dame: A Witness to History – Monday, 8th, 7:00 p.m.;
Wednesday, 10th, 2:00 p.m.

Osiris Rex: Countdown to Launch – Monday, 15th, 3:30 p.m.

Parents' Survival Guide: Childhood Obesity – Tuesday, 23rd, 8:00 a.m.

PBS Previews: Country Music – Saturday, 6th, 8:30 p.m.;

Friday, 12th, 9:00 a.m.; Tuesday, 16th, 9:30 p.m.

POV –

"Call Her Ganda" – Sunday, 7th, 9:00 p.m.

"Bisbee '17" – Sunday, 21st, 9:00 p.m.

"On Her Shoulders" – Sunday, 28th, 9:00 p.m.

POV Shorts: Earthrise – Monday, 22nd, 8:30 p.m.

Project Asteroid: Mapping Bennu – Monday, 22nd, 3:30 p.m.

Rick Steves' Travel Tips and Tricks – Wednesday, 3rd, 2:00 p.m.

Rise of the Superheroes – Saturday, 20th, 7:00 p.m.;

Monday, 29th, 2:00 p.m.

Rivers of Life –

"Amazon" – Monday, July 1st, 6:00 a.m.

"Mississippi" – Wednesday, 3rd, 9:00 p.m.; Thursday, 4th, 2:00 p.m.;
Saturday, 6th, 4:00 p.m.; Monday, 8th, 6:00 a.m.

Secrets of the Dead "Galileo's Moon" – Wednesday, 3rd, 8:00 p.m.

Selling Sunshine: The Florida Trains – Thursday, 11th, 7:00 a.m.

Shake-Up – Tuesday, 2nd, 7:00 p.m.; Tuesday, 9th, 8:00 a.m.;
Friday, 12th, 9:00 p.m.

Songs to Keep: Treasures of an Adirondack Folk Collector –
Tuesday, 23rd, 7:00 a.m.

Space Chase USA – Monday, 29th, 7:00 p.m.; Wednesday 31st, 8:00 a.m.

Symphony in D – Saturday, 27th, 8:00 p.m.

Turn the Page – Tuesday, 16th, 8:00 a.m.

U.S. Marine Band: An All-Star Orchestra Special (3 Pts.) –
Wednesdays, 8:00 a.m. (begins 10th)

Wheels of Yesteryear: Touring with the Tin Lizzies –

Friday, 5th, 9:00 a.m.; Thursday, 11th, 3:30 p.m.;

Saturday, 13th, 8:30 p.m.

When We Were Apollo – Sunday, 14th, 9:00 p.m.

Year in Space – Wednesday, 17th, 9:00 p.m.; Thursday, 18th, 2:00 p.m.;
Saturday, 20th, 4:00 p.m.; Monday, 22nd, 6:00 a.m.;

Tuesday, 23rd, 8:00 p.m.

July 3-1 Specials

8 Days: To the Moon and Back – Saturday, 20th, 11:00 p.m.;
Monday, 22nd, 7:00 p.m.

20th Century Limited – Thursday, 18th, 7:00 a.m.

American Experience –

"Chasing the Moon" (3 Pts.) – Tuesday–Thursday, 9th–11th, 7:00 p.m.
Wednesdays, 7:00 p.m. (begins 17th)

"Space Men" – Wednesday, 10th, 9:00 p.m.; Thursday, 11th, 2:00 p.m.

Ancient Skies (3 Pts.) – Wednesdays, 9:00 p.m. (begins 24th);

Thursdays, 2:00 p.m. (begins 25th); Saturday, 4:00 p.m. (begins 27th);

Mondays, 6:00 a.m. (begins 29th)

Anthem – Thursday, 4th, 7:00 p.m.

Art of a Cowboy (13 Pts.) – Tuesdays, 7:30 p.m. (begins 16th);

Saturdays, 11:30 a.m. (begins 20th)



NOTRE DAME: WITNESS TO HISTORY



NOTRE DAME: WITNESS TO HISTORY is the story of the great cathedral, Notre Dame de Paris—the Gothic marvel that has endured nearly two centuries of construction, wars, coronations, revolutions, restorations and a devastating fire in April. But she still stands and now appears will rise again.

Tens of thousands of people used to enter her doors every day. Within her breathtaking structure were priceless works of art and sacred biblical relics, many of which were saved from the fire.

With beautiful photography, rare archival material, and insights from leading scholars, architects and theologians, **NOTRE DAME** tells the remarkable story of this Parisian landmark through history and brings to life the fascinating characters—both real and fictional—whose destinies are woven into the legend of this most famous of all cathedrals. Step inside for an amazing tour.

Friday, the 5th at 9:00 p.m. (3-2)

Sunday, the 7th at 10:00 a.m. (3-2)

Sunday, the 21st at 10:00 p.m. (3-2)

Monday, the 8th at 7:00 p.m. (3-1)

Wednesday, the 10th at 2:00 p.m. (3-1)