



Q2•3

Program Guide KENW-TV/FM
Eastern New Mexico University
May 2019

CyberWorks and the American Dream

When to watch from *A to Z*

Channel 3-2 – May 2019

Amanpour and Company – Tuesdays–Thursdays, 11:00 p.m.
American Woodshop – Saturdays, 6:30 a.m. (ends 11th)
America's Heartland – Saturdays, 6:30 p.m.
America's Test Kitchen – Saturdays, 7:30 a.m.; Thursdays, 11:30 a.m.
Antiques Roadshow – Mondays, 7:00 p.m./8:00 p.m./11:00 p.m. (8:00 p.m. on 13th only); Sundays, 7:00 a.m.
Ask This Old House – Saturdays, 4:00 p.m.
Austin City Limits – Saturdays, 9:00 p.m./12:00 midnight
BBC Newsnight – Fridays, 5:00 p.m. (begins 10th)
BBC World News – Weekdays, 6:30 a.m./4:30 p.m.
Beads, Baubles and Jewels – Mondays, 12:30 p.m.
Beauty of Oil Painting – Fridays, 12:30 p.m.; Saturdays, 12:00 noon
Body Electric – Weekdays, 5:30 a.m.
Classic Arts Showcase – Sundays–Saturdays, 1:00 a.m.–5:00 a.m.
Classic Gospel – Sundays, 8:00 a.m./4:00 p.m.
Classical Stretch – Weekdays, 6:00 a.m.
Classic Woodworking – Saturdays, 6:00 a.m.; Wednesdays, 11:30 a.m.
Closer to Truth – Sundays, 1:30 p.m.
Consuelo Mack WealthTrack – Fridays, 7:30 p.m.
Cook's Country – Mondays, 11:00 a.m.
Craftman's Legacy – Thursdays, 11:00 a.m.
Creative Living – Tuesdays/Thursdays, 12:00 noon; Saturdays, 2:00 p.m.; Tuesdays, 9:30 p.m.
Cultura – Sundays, 12:00 noon (12th, 26th only)
Curious Traveler – Mondays, 10:00 p.m. (ends 6th)
Finding Your Roots – Tuesdays, 7:00 p.m. (ends 7th)
Firing Line – Fridays, 8:30 p.m.
Fishing Behind the Lines – Wednesdays, 11:00 a.m.
Fons & Porter's Love of Quilting – Saturdays, 1:30 p.m.
Frontline – Tuesdays, 10:00 p.m.; Thursdays, 7:00 p.m.
"The Mueller Investigation" – 2nd & Sunday, 5th, 6:00 p.m.
"Trump's Trade War" – 7th, 9th
"One Day in Gaza" – 14th, 16th
"Supreme Revenge" – 21st, 23rd
"Sex Trafficking in America" – 28th, 30th
Great British Baking Show – Saturdays, 8:30 a.m.
Healing Quest – Tuesdays, 5:00 p.m.
In Focus New Mexico – Sundays, 12:30 p.m.
It's Sew Easy – Saturdays, 5:30 p.m.; Tuesdays, 12:30 p.m.
Jazzy Vegetarian – Saturdays, 2:30 p.m.
Joanne Weir's Plates & Places – Tuesdays, 11:00 a.m.
Joy of Music – Sundays, 9:00 a.m.
Joy of Painting – Saturdays, 11:30 a.m.
J Schwanke's Life in Bloom – Saturdays, 10:30 a.m.
Kevin Belton's New Orleans Kitchen – Saturdays, 7:00 a.m. (begins 4th)
Knit and Crochet Now! – Tuesdays, 11:30 a.m.; Saturdays, 3:00 p.m.
Lawrence Welk – Saturdays, 7:00 p.m.
Market to Market – Fridays, 7:00 p.m.
Martha Bakes – Saturdays, 8:00 a.m.; Mondays, 11:30 a.m. (begins 20th)
Martha Stewart's Cooking School – Mondays, 11:30 a.m. (ends 13th)
Masterpiece –
"Downton Abbey" – Sundays, 2:00 p.m.
"Les Misérables" – Sundays, 8:00 p.m. (ends 19th); Fridays, 10:00 p.m. (10:30 p.m. on 3rd; ends 24th)
"Unforgotten Season 3" – Sundays, 9:00 p.m. (ends 12th)
Motorweek – Saturdays, 9:30 a.m.
Music & the Spoken Word – Sundays, 9:30 a.m.
Nature – Wednesdays, 7:00 p.m.; Saturdays, 11:00 p.m.
"American Spring Live" – 1st, 4th
"Moose: Life of a Twig Eater" – 8th, 11th
"Equus: Story of the Horse" (Pt. 1) – 15th, 18th
"Equus: Story of the Horse" (Pt. 2) – 22nd, 25th
"Soul of the Elephant" – 29th
News 3 New Mexico – Thursdays–Fridays, 5:00 p.m. (ends 3rd)
Nightly Business Report – Weekdays, 5:30 p.m.
Nova – Wednesdays, 8:00 p.m.; Saturdays, 10:00 p.m.; Sundays, 12:00 midnight
"Building the Great Cathedrals" – 1st, 4th, 5th
"Inside the Megafire" – 8th, 11th, 12th
"First Horse Warriors" – 15th, 18th, 19th
"Lost Viking Army" – 22nd, 25th, 26th
"Inside Einstein's Mind" – 29th
Painting and Travel – Sundays, 6:00 a.m.
Paint This with Jerry Yarnell – Saturdays, 11:00 a.m.
P. Allen Smith's Garden Home – Saturdays, 10:00 a.m.
PBS NewsHour – Weekdays, 6:00 p.m./12:00 midnight

A to Z listings for 3-1 are on pages 18 & 19

Quilt in a Day – Saturdays, 12:30 p.m.
Quilting Arts – Saturdays, 1:00 p.m.; Wednesdays, 12:30 p.m.
Red Green Show – Thursdays, 9:30 p.m.; Saturdays, 8:30 p.m.
Report from Santa Fe – Saturdays, 6:00 p.m.
Second Opinion – Wednesdays, 10:00 p.m. (except 29th); Sundays, 6:30 a.m./3:30 p.m. (except 26th)
Sewing with Nancy – Saturdays, 5:00 p.m.
Sit and Be Fit – Mondays/Wednesdays/Fridays, 12:00 noon
Song of the Mountains – Thursdays, 8:00 p.m.
SportsLook – Thursdays, 9:00 p.m. (ends 9th; returns in fall)
Star Gazers – Wednesdays, 10:57 p.m.; Saturdays, 10:57 a.m./9:57 p.m.; Sundays 2:57 p.m./10:57 p.m.; Mondays 10:57 p.m.
Start Up – Sundays/Wednesdays, 5:00 p.m.
Taste of History – Mondays, 10:30 p.m.
This Old House – Saturdays, 3:30 p.m.; Wednesdays, 10:30 p.m.
Wai Lana Yoga – Weekdays, 5:00 a.m.
Washington Week – Fridays, 8:00 p.m.; Mondays, 5:00 p.m.
Welcome to My Studio – Thursdays, 12:30 p.m.; Saturdays, 4:30 p.m.
Woodsmith Shop – Saturdays, 6:30 a.m. (begins 18th)
Woodsongs – Thursdays, 10:00 p.m.
You Should Know – Tuesdays, 9:00 p.m.

Special Programs

American Experience –
"Amelia Earhart" – Tuesday, 7th, 8:00 p.m.; Sunday, 12th, 10:00 p.m.
"Annie Oakley" – Tuesday, 14th, 8:00 p.m.; Sunday, 26th, 10:00 p.m.
"Emma Goldman" – Tuesday, 21st, 8:00 p.m.
"Rachel Carson" (2 hrs.) – Tuesday, 28th, 7:00 p.m.
Awakening in Taos: The Mabel Dodge Luhan Story – Tuesday, 21st, 7:00 p.m. Sunday, 26th, 6:00 p.m.
Breakthrough: The Ideas that Changed the World (6 Pts.) – Sundays, 10:00 a.m. (begins 19th); Wednesdays, 9:00 p.m. (ends 22nd)
Call the Midwife – Sundays, 7:00 p.m. (ends 19th)
Crazy (schizophrenia) – Sunday, 12th, 11:00 p.m.
CyberWorks and the American Dream – Sunday, 5th, 11:00 a.m.; Tuesday, 14th, 7:00 p.m.; Friday, 17th, 11:00 p.m.
D-Day at Pointe-du-Hoc – Sunday, 19th, 11:00 p.m.; Monday, 27th, 8:00 p.m.
Emilio & Gloria Estefan: The Library of Congress Gershwin Prize for Popular Song – Friday, 3rd, 9:00 p.m.; Sunday, 19th, 9:30 p.m.
Expeditions – Sundays, 5:30 p.m. (ends 19th)
Great Museums: The Art of Islam at the Met and the Louvre – Friday, 10th, 11:00 p.m.; Sunday, 19th, 6:00 p.m.; Sunday, 26th, 11:00 a.m.
Great Performances at the Met "Adriana Lecouvreur" (2-1/2 hrs.) – Friday, 31st, 9:00 p.m.
Growing Old Gambling – Friday, 31st, 11:30 p.m.
Hitler's Holocaust Railways – Monday, 27th, 9:00 p.m.
Independent Lens – Mondays, 9:00 p.m.
"Out of State" – 6th
"Harvest Season" – 13th
"Wrestle" – 20th
Islands Without Cars V – Sundays, 3:00 p.m. (begins 5th, except 26th); Thursdays, 5:00 p.m. (begins 9th)
Korea: The Never-Ending War (2 hrs.) – Sunday, 5th, 10:00 p.m.
Light Falls – Wednesday, 29th, 9:00 p.m.
Live From Lincoln Center–Stars in Concert – Fridays, 9:00 p.m.
"Cynthia Erivo" – 10th
"Annaleigh Ashford" – 17th
"Megan Hilty" – 24th
National Memorial Day Concert – Sunday, 26th, 7:00 p.m./8:30 p.m.
PBS Previews: Chasing the Moon – Sunday, 19th, 12:00 noon; Monday, 27th, 10:00 p.m.
Power Over Parkinson's 2 – Sunday, 5th, 12:00 noon
Revolutionizing Dementia Care – Sunday, 12th, 11:00 a.m.; Monday, 20th, 8:00 p.m.
Safe Enough? (seatbelts on school buses) – Sunday, 12th, 10:00 a.m.; Sunday, 26th, 11:00 p.m.
Samantha Brown's Places to Love – Saturdays, 8:00 p.m. (ends 4th)
Search for the Mona Lisa – Sunday, 5th, 10:00 a.m.; Monday, 6th, 8:00 p.m.
Today's Wild West – Thursdays, 9:00 p.m. (begins 16th)
Travel Detective V – Saturdays, 8:00 p.m. (begins 11th); Sundays, 5:30 p.m. (begins 26th)
Voyage of Adventure: Retracing Donelson's Journey – Sunday, 12th, 6:00 p.m.; Sunday, 19th, 11:00 a.m.
Walkin' California –
"Yosemite" – Friday, 3rd, 11:30 p.m.
"Catalina" – Friday, 24th, 11:30 p.m.

Q2.3 Program Guide

THE MAGAZINE FOR THE FRIENDS OF PUBLIC BROADCASTING – MAY 2019

Q2-3 Program Guide is published each month by the Broadcast Center, a non-profit public service division of Eastern New Mexico University.

Q2-3 Program Guide (Cue to 3) is available to friends contributing \$35 per year or more to the support of public broadcasting. Senior Citizen and Student memberships are available for \$25. All contributions are tax deductible. Donations should be made payable to Friends of **KENW-TV** or to Friends of **KENW-FM** or **KMTH-FM**.

KENW-TV, Channel 3, can be seen on UHF TV analog translators in the following areas:
Tucumcari - Channel 32; Ft. Sumner - Channel 34.

KENW-TV digital transmitters are located in: Artesia; Carlsbad; Ft. Sumner; Hobbs; Portales/Clovis; Roswell; Tucumcari; Ruidoso; Mesalero

KENW-FM, 89.5 MHz, Portales; **KMTH-FM**, 98.7 MHz, Maljamar; **KENM-FM**, 88.9 MHz, Tucumcari; NM; **KENU-FM**, 88.5 MHz, Des Moines, NM; **KENG-FM**, 88.5 MHz; Ruidoso, NM; **KENE-FM**, 88.1 MHz, Raton, and FM translators in:

Apache Springs - 90.9 MHz
Clayton - 93.5 MHz
Des Moines - 106.1 MHz
Ft. Sumner - 91.7 MHz

Las Vegas - 88.1 MHz
Roswell - 91.1 MHz
Wagon Mound - 92.1 MHz

Telephone: From Cannon A.F.B., Clovis, Portales, and Roosevelt County, call (575) 562-2112.

Others, call toll-free 1-888-FOR-KENW (367-5369).

Fax: (575) 562-2590

Mailing Address:

KENW-TV/FM
52 Broadcast Center, ENMU
1500 South Avenue K
Portales, NM 88130

Web site: www.kenw.org

E-Mail: kenwtv@enmu.edu
kenwfm@enmu.edu

**We always welcome your comments and/or suggestions:
Toll-free 1-888-FOR-KENW (367-5369)**

4. **Emilio & Gloria Estefan: The Library of Congress Gershwin Prize for Popular Song** features performances by Gloria Estefan, as well as Jose Feliciano, Il Volo, Cyndi Lauper, Emily Estefan, and original cast members of "On Your Feet!"
Live From Lincoln Center—Stars in Concert welcomes some of Broadway's brightest stars—Cynthia Erivo, Annaleigh Ashford, and Megan Hilty.
Great Museums: The Art of Islam at the Met and the Louvre showcases works of art that reveal a surprising number of connections that unite Western and Islamic traditions in art, science and literature.
5. **Nova** premieres "Inside the Megafire," the story of the deadliest wildfire in California history, "First Horse Warriors," that takes us back to the advent of horse riding, and "Lost Viking Army," that reveals evidence of a 9th century military force that conquered England.
D-Day at Pointe-du-Hoc shares the incredible mission of the U.S. Army's 2nd Ranger Battalion during the storming of Normandy Beach.
Hitler's Holocaust Railways explores the darkest chapter of rail history.
6. "Women in History" on **American Experience** celebrates extraordinary women: Amelia Earhart, Annie Oakley, Emma Goldman and Rachel Carson.
"Harvest Season" on **Independent Lens** probes the lives of three Latinos intimately connected to the production of premium wines in Northern California.
Light Falls celebrates the 100th anniversary of Albert Einstein's discovery of the general theory of relativity.
In **Voyage of Adventure: Retracing Donelson's Journey**, photographer John Guider sets out to retrace surveyor John Donelson's historic 1779-1780 journey.
7. Narrated by Morgan Freeman, **The Search for the Mona Lisa** pursues the real identity of the most famous portrait in the world.
Revolutionizing Dementia Care visits residential homes across the country to explore innovative strategies that improve the quality of life for people living with dementia.
CyberWorks and the American Dream looks at the impact of robotics and artificial intelligence on the future of work.
Frontline sheds light on "The Mueller Investigation," "Trump's Trade War," "One Day in Gaza," "Supreme Revenge" and "Sex Trafficking in America."

Q2.3 Program Guide Staff

Editor: **Linda Stefanovic**

Program Log Descriptions: **Carla Benavidez**
Evelyn Ledbetter

Eastern New Mexico University is an affirmative action and equal opportunity employer. The University does not discriminate on the basis of race, color, national origin, sex, or handicap in its programs, activities, or employment. Persons seeking additional information about the University's nondiscrimination policy should contact the Executive Director of Planning & Analysis, ENMU, Station #2, Portales, NM 88130.

ENMU BOARD OF REGENTS

President

Mr. Ed Tatum

Vice President

Mr. Terry Othick

Secretary / Treasurer

Mr. Joseph Gergel

Member

Dr. Dan Patterson

Member

Mr. Lance Pyle

EASTERN NEW MEXICO UNIV.

President

Dr. Jeff Elwell

Vice President for Academic Affairs

Dr. Jamie Laurenz

Vice President for Academic Support

Mr. Clark Elswick

Vice President for Business Affairs

Mr. Scott Smart

Vice President for Student Affairs

Dr. Jeffrey Long

BROADCAST CENTER STAFF

Director of Broadcasting

Duane W. Ryan

Business Manager

Laura Disney

Accountant

Carla Benavidez

Director of Engineering

Jeff Burmeister

Engineers

Rick Counts

Porfirio Delgado

Jason Murphy

Martin Quintero

Business Affairs Associate

Jim Zupancic

AREA ADMINISTRATOR

Vice President of Planning,
Analysis, and Governmental

Relations/Chief of Staff

Dr. Patrice Caldwell

KENW-TV STAFF

Development/Promotion

Director

Rena Garrett

Producer/Directors, TV

Allan Crawford

James Wygal

Production/Community

Services Associate

Don Criss

Programming Associate

Linda Stefanovic

Development /Production

Associate

Sheryl Borden

Director of Programming

and Operations

Sean Moore

Assistant Operations Director

Justin Robertson

Master Control Operators, TV

David Asplund

Kim Choate

Bill Moyer

Administrative Assistants

Vickie Brisco

Evelyn Ledbetter

KENW/KMTH-FM STAFF

News Director, FM

Janet Lyn Bresenham

Development Director, FM

Amie Griffith

Operations Director, FM

Shannon Hearn

Audio Engineer

Mickey Morgan

Administrative Assistant

Suzanne West

BROADCAST CENTER STUDENT STAFF EMPLOYEES

Jordan Alexander	Heath Gossett	Vena Ryan
David Bowman	Jordan Honeycutt	Ryan Schroeder
Aislynn Casias	Dylan Knox	Frankie Summerlin
Lane Castro	Olivia Land	Brandon Warren
Spencer Courtney	Orlando Perez	Brandon Welsh
Cameron Dixon	Johanna Poirier	Kenan White
Daniella Gauna	Elizabet Ramos	

Emilio & Gloria Estefan Library of Congress Gershwin Prize for Popular Song



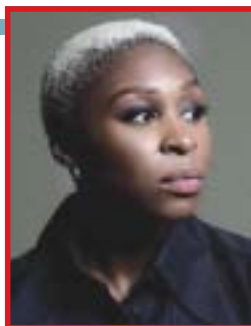
Emilio & Gloria Estefan: The Library of Congress Gershwin Prize for Popular Song marks the first time the Gershwin Prize has been awarded to a married couple or to songwriters/musicians of Hispanic descent. The star-studded event features performances by Gloria Estefan, as well as Jose Feliciano, Il Volo, Cyndi Lauper, Emily Estefan and original cast members of “On Your Feet!”—with Rita Moreno and Andy Garcia as hosts.

Married since 1978, the Cuban-

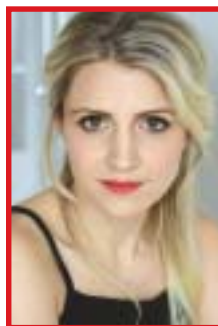
American Estefans started their extraordinary rise to global fame in 1985 with Miami Sound Machine, creating a unique sound that blended Latin and pop rhythms. Many of their iconic hits—including “Conga,” “Turn the Beat Around,” “Get on Your Feet” and “Rhythm Is Gonna Get You”—reflected the perfect marriage of creative lyrics, high-octane rhythms, and spirited vocals. They made listening to Cuban-infused music one of America’s favorite pastimes.

The Estefans have both been named BMI’s “Songwriter of the Year” and have garnered 26 Grammy Awards between them. Among their numerous awards is the Presidential Medal of Freedom, the nation’s highest civilian honor.

Emilio & Gloria Estefan: The Library of Congress Gershwin Prize for Popular Song can be seen on 3-2 Friday, the 3rd at 9:00 p.m. and Sunday, the 19th at 9:30 p.m. On 3-1, it will be broadcast Saturday, the 4th at 7:00 p.m.



Cynthia Erivo



Annaleigh Ashford



Megan Hilty

Live From Lincoln Center Stars in Concert

Live From Lincoln Center welcomes some of Broadway’s brightest stars—Cynthia Erivo, Annaleigh Ashford, and Megan Hilty—for the critically acclaimed **Stars in Concert** performance series. Set in the gorgeous Appel Room at Jazz at Lincoln Center, each of the three-hour episodes spotlights one of these leading voices of musical theater in a performance that combines the intimacy of cabaret with the razzle dazzle of Broadway.

Bursting onto the scene with her star-making performance in “The Color Purple,” Cynthia Erivo is swiftly approaching the haloed EGOT status. The classically trained actor with a powerhouse voice already has a Tony, Grammy and Emmy Award under her belt.

Described as “luminous” and “a sly comic genius” (*New York Times*), Broadway favorite Annaleigh Ashford has thrilled audiences in “Sunday in the Park with George,” “Kinky Boots” and “You Can’t Take It With You,” for which she won a Tony.

Tony-nominated songstress Megan Hilty is the epitome of musical stardom. After making her Broadway debut as Glinda in “Wicked” opposite Idina Menzel to critical acclaim, Hilty went on to star in “Noises Off,” “9 to 5: The Musical” and NBC’s “Smash.”

Live From Lincoln Center—Stars in Concert will be broadcast on 3-2 Fridays at 9:00 p.m. beginning the 10th. On 3-1, the series airs Saturdays at 7:00 p.m. beginning the 11th.

Great Museums:

The Art of Islam at the Met and the Louvre

Great Museums: The Art of Islam at the Met and the Louvre showcases works of art that highlight the shared cultural heritage of our interconnected world. The objects on display in the Islamic galleries at the Metropolitan Museum of Art in New York and the Louvre in Paris reflect 14 centuries of changing political and cultural landscapes across three continents, and reveal a surprising number of connections that unite Western and Islamic traditions in art, science and literature.

The art of Islam is not simply religious art. The term “Islamic art” includes all art produced in Muslim lands from the 7th century forward, from Spain to Morocco, from Egypt to the Middle East, Central Asia and India, to the borders of China. This encompasses a huge variety of styles, materials and themes. Elements like calligraphy and “arabesque” engravings, like carpets and Qur’ans, fill the galleries and the stories highlighted in this film.



Spain; 12th-13th century; cast bronze lion. Chosen for the Louvre’s Islamic galleries Grand Opening poster, and a reminder that Spain was Islamic for 700 years.

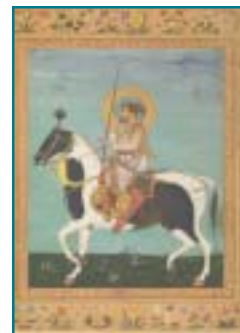
Within this complicated history are discoveries that influence our modern life. We learn that “algebra” and “algorithm” derive from Arabic. And that centuries ago, geometry was used to embellish art and architecture. Ancient Islamic sailors developed tools for navigating the seas and the skies, and Islamic scholars documented medical discoveries from Ancient Greece in a comprehensive reference book in 9th century Baghdad.

We learn that Islamic potters imitated Chinese porcelain, Venetian glassmakers enhanced Islamic glass-making techniques and French royal children were baptized using silver inlaid bowls that featured Muslim battle scenes.

One can gain a great deal of insight from a civilization’s art.

Great Museums: The Art of Islam at the Met and the Louvre airs on 3-2 Friday, the 10th at 11:00 p.m., Sunday, the 19th at 6:00 p.m. and Sunday, the 26th at 11:00 a.m. On 3-1, it airs Saturday, the 18th at 8:00 p.m. and Wednesday, the 22nd at 8:00 a.m.

India; 17th century; ink, opaque watercolor and gold on paper. From The Met: Payag (the artist) worked for the emperors Akbar, Jahangir and Shah Jahan over the course of a remarkably long, seven-decade career. The artist was recently confirmed by the discovery of a microscopic signature on the golden tip of Shah Jahan’s bow.



Inside the Megafire

From the front line of the Camp Fire, the deadliest wildfire in California history, “Inside the Megafire” on **Nova** tells the stories of residents who had to flee for their lives during the 2018 fire season. Scientists racing to understand what’s behind the rise of record-breaking megafires across the American West take to the forest, and even a fire lab, in search of answers. They investigate how forestry practices, climate change and the physics of fire itself play a role in the dramatic increase in wildfires in recent decades.

“Inside the Megafire” on **Nova** airs on 3-2 Wednesday, the 8th at 8:00 p.m. and Saturday, the 11th at 10:00 p.m. On 3-1, it airs Thursday, the 9th at 4:00 p.m., Friday, the 10th at 8:00 p.m. and Saturday, the 11th at 11:00 p.m.

First Horse Warriors

The advent of horse riding was a momentous step in human history. But when and how did our ancestors first learn to master these animals? In a spectacular adventure, “First Horse Warriors” on **Nova** unlocks the mystery on the vast, grassy plains of Kazakhstan, where wild horses still roam free, and nomadic herders follow their traditional way of life. Investigating clues from archaeology and genetics, researchers reveal vivid evidence of the very first horsemen. They also discover warriors who swept across Europe, and turn out to be the ancestors of millions today.

“First Horse Warriors” on **Nova** airs on 3-2 Wednesday, the 15th at 8:00 p.m. and Saturday, the 18th at 10:00 p.m. On 3-1, it airs Thursday, the 16th at 4:00 p.m., Friday, the 17th at 8:00 p.m., Saturday, the 18th at 11:00 p.m. and Sunday, the 19th at 4:00 p.m.

Lost Viking Army

In the mid-ninth century, a Viking military force known as the Great Heathen Army invaded England. The Great Heathen Army got its name from the English Christians whose land the Vikings began invading around 865 A.D. It marked the transition among Vikings from raiding cities to conquering them, and is considered an important historical event in the creation of England. Yet for decades, no one could find any archaeological evidence to back this up.

Now, “Lost Viking Army” on **Nova** reveals that a group of researchers in England think they might have found that evidence—the soldiers’ bones.

The bones come from a mass grave of at least 264 skeletons at St. Wystan’s church in Repton, Derbyshire, that archaeologists first excavated in the 1970s and ‘80s. Historical records tell us the Viking army spent the winter in Repton in 873 A.D., and many thought carbon dating would show the bones came from that time period. But initial carbon dating placed the skeletons in earlier centuries, leading researchers to conclude that they couldn’t be Viking soldiers.

It was only after adjusting for Vikings’ seafood diet that researchers were able to correctly carbon date them to the 9th century. A diet of fish or other marine foods incorporates carbon into human bones that is much older than in other foods. This confuses radiocarbon dates from archaeological bone material, which can be corrected by estimating how much seafood each individual ate.

Other clues support the theory that these are remnants of the Viking army, including the fact that about 20 percent were female. In Viking society, women enjoyed a surprising degree of autonomy and independence.

King Alfred eventually recaptured English territories that the Vikings had taken, including London.

“Lost Viking Army” on **Nova** airs on 3-2 Wednesday, the 22nd at 8:00 p.m. and Saturday, the 25th at 10:00 p.m. On 3-1, it airs Thursday, the 23rd at 4:00 p.m., Friday, the 24th at 8:00 p.m., Saturday, the 25th at 11:00 p.m. and Sunday, the 26th at 4:00 p.m.

D-Day at Pointe-du-Hoc

D-Day at Pointe-du-Hoc shares the awe inspiring story of the U.S. Army’s 2nd Ranger Battalion, which, during the storming of Normandy Beach, carried out what many believed was D-Day’s most important and also its most suicidal mission.

Led by Lt. Col. James Earl Rudder, the battalion sought to destroy six German cannons believed to be situated halfway between Omaha and Utah Beaches, within firing range of the main beach assault. The 155mm guns had to be taken out if Operation Overlord was to be a success.

After scaling 100-foot cliffs and avoiding machine gun fire, they discovered the cannons had been moved from the location days prior. What ensued was two days of constant fighting as the heavily outnumbered Rangers held off German troops, preventing them from retaking the strategic oceanside position.

Weaving together first-hand accounts, striking drone footage of the English Channel approach and imposing Pointe cliffs, and rare archival footage of the 2nd Rangers preparing for action, **D-Day at Pointe-du-Hoc** shares an incredible story of adversity and courage that took place in June of 1944.

D-Day at Pointe-du-Hoc will be broadcast on 3-2 Sunday, the 19th at 11:00 p.m. and Monday, the 27th at 9:00 p.m. On 3-1, it airs Monday, the 27th at 7:00 p.m. and Tuesday, the 28th at 1:00 p.m.



Hitler’s Holocaust Railways

Chris Tarrant explores the darkest chapter of rail history in **Hitler’s Holocaust Railways**. Railways played a vital part in Hitler’s masterplan, efficiently transporting soldiers and weapons to the front and, equally as efficiently, ferrying millions of Jews to ghettos and concentration camps.

Tarrant takes a simultaneous geographical journey on railways in Germany, the former Czechoslovakia and Poland, while at the same time telling the chronological

story of how the implementation of Nazi Germany’s first anti-Semitic laws in 1935 coincided with a drive to construct the world’s most extensive rail network.

The film features contributions from survivors, including a Polish man who worked as a child slave in building the railway, who reveals how he narrowly escaped being transported to Auschwitz by hiding in a cemetery.

Hitler’s Holocaust Railways airs on 3-2 Monday, the 27th at 9:00 p.m. On 3-1, it can be seen Wednesday, the 1st at 7:00 p.m.





(LtoR): Amelia Earhart, Annie Oakley, Emma Goldman, Rachel Carson

AMERICAN EXPERIENCE “Women in History”

American Experience presents a special salute to “Women in History” this May with encore broadcasts of four films that celebrate extraordinary women: Amelia Earhart, Annie Oakley, Emma Goldman and Rachel Carson. These stories explore the lives of women who became famous—or controversial—for following their own paths, regardless of the consequences, and whose achievements are still remembered today.

Amelia Earhart – The first woman to fly solo across the Atlantic, Amelia Earhart was one of America’s earliest celebrities. She became the best-known female flier in America, not only for her daring and determination, but also for her striking looks and outspoken personality. Her uncanny resemblance to Charles Lindbergh—the most famous man in America at the time—earned her the nickname “Lady Lindy.” Three weeks short of her 40th birthday, Earhart disappeared over the Pacific Ocean.

Annie Oakley – This is the story of a five-foot, 100-pound sharp shooter who pulled herself out of the depths of poverty to become an iconic performer known as a symbol of the Wild West. She was the toast of New York, Victorian London, Paris and eventually the world. She was “adopted” by Indian Chief Sitting Bull, charmed the Prince of Prussia, and entertained the likes of Oscar Wilde and Queen Victoria. Annie Oakley excelled in a man’s world by doing what she

loved, and won fame and fortune as the little lady who never missed a shot.

Emma Goldman – For nearly half a century, Russian emigrant Emma Goldman was the most controversial woman in America, taunting the mainstream with her fervent attacks on government, big business and war. To the tabloids, she was “Red Emma, Queen of the Anarchists,” but many admired Goldman for her defense of labor rights, women’s emancipation and birth control, and as a fearless writer and merciless publisher.

Rachel Carson – When Rachel Carson’s *Silent Spring* was published in 1962, the book became a phenomenon. A passionate warning about the long-term dangers of pesticides, the book unleashed an extraordinary national debate and provoked vigorous attacks from the chemical industry. But it also inspired President John F. Kennedy to launch the first-ever investigation into the public health effects of pesticides—an investigation that eventually would result in new laws designed to protect and preserve the environment.

American Experience “Amelia Earhart” and “Annie Oakley” airs on 3-2 Tuesdays at 8:00 p.m. beginning the 7th and Sundays at 10:00 p.m. beginning the 12th. “Emma Goldman” airs Tuesday, the 21st at 8:00 p.m. and “Rachel Carson” airs Tuesday, the 28th at 7:00 p.m. On 3-1, the series airs Wednesdays at 7:00 p.m. beginning the 8th.

Harvest Season

In California’s Wine Country

“Harvest Season” on **Independent Lens** probes the lives of the temporary laborers, permanent residents, and multigenerational Latinos intimately connected to the production of premium wines in the Napa and Sonoma regions of Northern California.

The film follows the stories of veteran winemaker Gustavo Brambila, Mexican migrant worker René Reyes and wine entrepreneur Vanessa Robledo. Their stories unfold against the backdrop of a region of immense wealth that was accountable for \$1.53 billion in export revenue last year.

Due to immigration issues, Napa’s growers and labor contractors are facing a severe labor shortage. Some turn to the H-2A visa program, which allows them to bring in foreign nationals, like René Reyes, to fill temporary agricultural jobs.

Vanessa Robledo’s grandfather and uncles were brought to California through the Bracero program in the 1940s, settled in Napa and built a successful winemaking business. Now she takes great pride in managing the same vines that her grandfather taught her to tend as a child.

The son of a vineyard worker, Gustavo Brambila came to the U.S. from Mexico when he was three years old. He has been making wines since 1976, and still spends countless hours perfecting each vintage.

The stories of Gustavo, Vanessa and René culminate in a dramatic grape harvest—the most critical time of year for California winemakers.

“Harvest Season” on **Independent Lens** airs on 3-2 Monday, the 13th at 9:00 p.m. On 3-1, it airs Sunday, the 19th at 9:00 p.m.



Brian Greene

Light Falls

Light Falls celebrates the 100th anniversary of Albert Einstein’s discovery of the general theory of relativity. Written by acclaimed American theoretical physicist, mathematician and string theorist Brian Greene, this unique theatrical work weaves together dramatic portrayals, state-of-the-art animation and innovative projection techniques to trace Einstein’s journey toward one of the most beautiful ideas ever conceived.

Together with an ensemble cast, Greene recounts the dramatic story of the breakthrough moments, near misses, agonizing frustrations and emergence into the light, as one intrepid mind took on the universe and won.

Light Falls will be broadcast on 3-2 Wednesday, the 29th at 9:00 p.m. On 3-1, it can be seen Thursday, the 30th at 7:00 p.m.

Voyage of Adventure:

Retracing Donelson’s Journey

In this adventure story, photographer John Guider sets out in a self-made row boat to retrace surveyor John Donelson’s historic 1779-1780 expedition—a 1,000 mile journey that began in Tennessee and ended at what would become present-day Nashville.

Frontiersman Donelson, along with surveyor James Robertson, set out to establish the first large-scale European settlement in Tennessee. While Robertson trekked over land, Donelson led a flotilla of families, slaves and supplies down the riverways.

Encountering the worst winter in recorded history and navigating without charts, Donelson and his party dealt with harsh conditions, dwindling food reserves, smallpox, and attacks by Native American tribes who were trying to protect their land.

In **Voyage of Adventure: Retracing Donelson’s Journey** airs on 3-2 Sunday, the 12th at 6:00 p.m. and Sunday, the 19th at 11:00 a.m. On 3-1, it airs Tuesday, the 28th at 7:00 a.m. and 2:00 p.m.

FRONTLINE

The Mueller Investigation

In response to conclusions from Special Counsel Robert Mueller's report on collusion and obstruction of justice, **Frontline** presents "The Mueller Investigation." The program is a comprehensive review and analysis of what we know about Mueller's findings and the dramatic events that led the White House and the nation to this moment.

This report draws on in-depth interviews with senior law enforcement officials, Trump insiders, attorneys, authors and journalists to chronicle the President's unprecedented battle with the special counsel, the FBI, the Department of Justice and his own attorney general.

Thursday, 2nd, 7:00 p.m. (3-2)

Sunday, 5th, 6:00 p.m. (3-2)

Friday, 3rd, 9:00 p.m. (3-1)

Other **Frontline** episodes in May are "**Trump's Trade War**," which tells the inside story of the President's gamble to confront China over trade. With reporting from the US and China, the program investigates what led the world's two largest economies to the brink, and the billions at stake.

"**One Day in Gaza**" looks at how mass protests on the Israel-Gaza border led to one of the deadliest days in a generation. One year later, this moment-by-moment investigation draws on exclusive interviews in Gaza and Israel and videos of the protests and bloodshed.

"**Supreme Revenge**" goes inside the no-holds-barred war for control of the Supreme Court. From Brett Kavanaugh to Robert Bork, this investigation reveals how a 30-year-old grievance transformed the Court and turned confirmations into bitter, partisan conflicts.

"**Sex Trafficking in America**" exposes the hidden reality of sex trafficking, inside a police unit and a victim's harrowing story. It's an up-close look at how victims are groomed and sold, and the innovative ways undercover police target traffickers and buyers.

The above four episodes of **Frontline** air on 3-2 Tuesdays at 10:00 p.m. and repeat Thursdays at 7:00 p.m. beginning the 7th. On 3-1, they air Fridays at 9:00 p.m. beginning the 10th. Specific dates are listed in the AtoZs on pages 2 and 18.

Frontline producers frequently change their program schedule after this guide has gone to press. The above line-up is accurate as of this moment.

The Search for the Mona Lisa, narrated by Morgan Freeman, reveals that Leonardo da Vinci's Mona Lisa portrait is not the Mona Lisa. Timed to the 500th anniversary of Leonardo's death on May 2nd, 2019, the film shows that the portrait has become the center of a swirling controversy. If she is not the Mona Lisa, then who is she? And why did Leonardo da Vinci paint her?

Using newly discovered evidence, the film is a thriller-like pursuit for the real identity of the most famous portrait in the world. It features top Da Vinci experts from Europe and the United States.

The Search for the Mona Lisa airs on 3-2 Sunday, the 5th at 10:00 a.m. and Monday, the 6th at 8:00 p.m. On 3-1, it can be seen Thursday, the 2nd at 7:00 p.m., Tuesday, the 7th at 1:00 p.m. and Saturday, the 11th at 8:00 p.m.



Revolutionizing Dementia Care

Over 50 million people in the world are living with Alzheimer's Disease and other forms of dementia, and more and more families are facing tough decisions related to the long-term care of their loved ones. Explore innovative strategies that improve the quality of life for people living with dementia, in **Revolutionizing Dementia Care**.

The film visits eight residential homes—from Massachusetts to California—specializing in dementia and Alzheimer's care. Interviews with residents, family and staff reveal various models of person-centered care, and their impact on both the recipients and providers of those services.



Patients enjoy virtual reality and watch dolphins from a new perspective.

Experts and educators in the dementia care field also discuss the changing landscape of diagnosis and care, and the benefits of these new models. From equine and horticulture therapies to city-wide dementia-friendly education programs, the film captures the evolving ways ability-focused programs can enrich the lives of those living with this diagnosis.

Revolutionizing Dementia Care can be seen on 3-2 Sunday, the 12th at 11:00 a.m. and Monday, the 20th at 8:00 p.m. On 3-1, it airs Tuesday, the 21st at 8:00 a.m.

CyberWorks and the American Dream

Today the Artificial Intelligence (AI) revolution has reignited old fears of human obsolescence. Just as the invention of the tractor revolutionized farming, manufacturing and other major industries will be transformed by AI. Economic and social changes will be on the same scale as the changes brought about by electricity. At the same time, the promise of AI is that it will enable us to solve the most difficult problems that society faces today.

CyberWorks and the American Dream looks at the impact of robotics and artificial intelligence on the future of work. While new technologies have increased wealth, freedom and life expectancy, they have also automated jobs and destroyed outdated businesses.

Starting with the Industrial Revolution, the film gives a historical framework for the impact of new technologies that sparked social turmoil, such as the progression of steam, electrical and computer machinery.

The documentary features a diverse cast of experts, notable voices, and more than a dozen scholars and innovators who add contrasting perspectives. NBA's Dallas Mavericks owner Mark Cuban notes, "If we don't start putting programs in place to deal with the inevitable disruption, you're going to have pockets of the country, if not larger swaths of the country, having to deal with significant unemployment."

CyberWorks and the American Dream airs on 3-2 Sunday, the 5th at 11:00 a.m., Tuesday, the 14th at 7:00 p.m. and Friday, the 17th at 11:00 p.m. On 3-1, it airs Wednesday, the 8th at 8:00 a.m.

◆ KENW-TV's DAYTIME SCHEDULES ◆

Kids' Programming, How-to's, and Family Viewing

Channels 3-1 (HD), 3-2, 3-3, 3-4 (SD) require a digital television or a converter box, both with antennas in order to receive free over-the-air signals.

Channel 3-2

Monday through Friday

5:00 am	Wai Lana Yoga
5:30 am	Body Electric
6:00 am	Classical Stretch
6:30 am	BBC World News
7:00 am	Sesame Street
7:30 am	Pinkalicious & Peterrific
8:00 am	Dinosaur Train
8:30 am	Peg + Cat
9:00 am	Daniel Tiger's Neighborhood
9:30 am	Daniel Tiger's Neighborhood
10:00 am	Splash and Bubbles
10:30 am	Curious George
11:00 am	Cook's Country (M)
	Joanne Weir's Plates & Places (Tu)
	Fishing Behind the Lines (W)
	Craftman's Legacy (Th)
	Thomas Edison's Secret Lab (F)
11:30 am	Martha Stewart's Cooking School (M)
	Knit and Crochet Now! (Tu)
	American Woodshop (W)
	America's Test Kitchen (Th)
	Mister Rogers (F)
12:00 pm	Sit and Be Fit (MWF)
	Creative Living (TuTh)
12:30 pm	Beads, Baubles and Jewels (M)
	It's Sew Easy (Tu)
	Quilting Arts (W)
	Welcome to My Studio (Th)
	Beauty of Oil Painting (F)
1:00 pm	Let's Go Luna!
1:30 pm	Ready, Jet, Go!
2:00 pm	Nature Cat
2:30 pm	Wild Kratts
3:00 pm	Arthur
3:30 pm	Odd Squad
4:00 pm	Odd Squad (M-Th)
	Kid Stew (F)
4:30 pm	BBC World News America (M-F)
5:00 pm	Washington Week (M)
	Healing Quest (Tu)
	Start Up (W)
	Islands Without Cars (Th)
	BBC Newsnight (F)
5:30 pm	Nightly Business Report
6:00 pm	PBS NewsHour

Channel 3-3

Monday through Friday

5:00 am	Ready, Jet, Go!
5:30 am	Peg + Cat
6:00 am	Nature Cat
6:30 am	Curious George
7:00 am	Let's Go Luna!
7:30 am	Daniel Tiger's Neighborhood
8:00 am	Daniel Tiger's Neighborhood
8:30 am	Pinkalicious & Peterrific
9:00 am	Sesame Street
9:30 am	Splash and Bubbles
10:00 am	Dinosaur Train
10:30 am	Cat in the Hat
11:00 am	Sesame Street
11:30 am	Super Why!
12:00 pm	Pinkalicious & Peterrific
12:30 pm	Let's Go Luna!
1:00 pm	Nature Cat
1:30 pm	Wild Kratts
2:00 pm	Wild Kratts
2:30 pm	Odd Squad
3:00 pm	Odd Squad
3:30 pm	Arthur
4:00 pm	Arthur
4:30 pm	Ready, Jet, Go!
5:00 pm	Sesame Street
5:30 pm	Pinkalicious & Peterrific
6:00 pm	Let's Go Luna!
6:30 pm	Wild Kratts
7:00 pm	Odd Squad
7:30 pm	Odd Squad
8:00 pm	Arthur
8:30 pm	Arthur



Saturday

5:00 am	Sesame Street
5:30 am	Daniel Tiger's Neighborhood
6:00 am	Pinkalicious & Peterrific
6:30 am	Curious George
7:00 am	Let's Go Luna!
7:30 am	Nature Cat
8:00 am	Ready, Jet, Go!
8:30 am	Wild Kratts
9:00 am	Odd Squad
9:30 am	Arthur
10:00 am	Cyberchase
10:30 am	Cat in the Hat
11:00 am	Mister Rogers
11:30 am	Splash and Bubbles
12:00 pm	Hands on Crafts for Kids
12:30 pm	Super Why!
1:00 pm	Curious George
1:30 pm	Nature Cat
2:00 pm	Ready, Jet, Go!
2:30 pm	Wild Kratts
3:00 pm	Dinosaur Train
3:30 pm	Let's Go Luna!
4:00 pm	Daniel Tiger's Neighborhood
4:30 pm	Pinkalicious & Peterrific
5:00 pm	Biz Kid\$
5:30 pm	Sesame Street
6:00 pm	Nature Cat
6:30 pm	Ready, Jet, Go!
7:00 pm	Wild Kratts
7:30 pm	Odd Squad
8:00 pm	Arthur
8:30 pm	Cyberchase

Sunday

5:00 am	Sesame Street
5:30 am	Daniel Tiger's Neighborhood
6:00 am	Pinkalicious & Peterrific
6:30 am	Curious George
7:00 am	Let's Go Luna!
7:30 am	Nature Cat
8:00 am	Ready, Jet, Go!
8:30 am	Wild Kratts
9:00 am	Odd Squad
9:30 am	Arthur
10:00 am	Cyberchase
10:30 am	Sesame Street
11:00 am	Mixed Nutz
11:30 am	Cat in the Hat
12:00 pm	Let's Go Luna!
12:30 pm	Super Why!
1:00 pm	Dinosaur Train
1:30 pm	Daniel Tiger's Neighborhood
2:00 pm	Pinkalicious & Peterrific
2:30 pm	Splash and Bubbles
3:00 pm	Curious George
3:30 pm	Nature Cat
4:00 pm	Ready, Jet, Go!
4:30 pm	Scigirls
5:00 pm	Curiosity Quest
5:30 pm	Sesame Street
6:00 pm	Daniel Tiger's Neighborhood
6:30 pm	Splash and Bubbles
7:00 pm	Wild Kratts
7:30 pm	Odd Squad
8:00 pm	Arthur
8:30 pm	Cyberchase

Channel 3-1

Saturday

5:00 am	Mister Rogers
5:30 am	Splash and Bubbles
6:00 am	Sesame Street
6:30 am	Daniel Tiger's Neighborhood
7:00 am	Pinkalicious & Peterrific
7:30 am	Curious George
8:00 am	Let's Go Luna!
8:30 am	Nature Cat
9:00 am	Ready, Jet, Go!
9:30 am	Wild Kratts
10:00 am	Odd Squad
10:30 am	Arthur

Sunday

5:00 am	Mister Rogers
5:30 am	Splash and Bubbles
6:00 am	Sesame Street
6:30 am	Daniel Tiger's Neighborhood
7:00 am	Pinkalicious & Peterrific
7:30 am	Curious George
8:00 am	Let's Go Luna!
8:30 am	Nature Cat
9:00 am	Ready, Jet, Go!
9:30 am	Wild Kratts
10:00 am	Odd Squad
10:30 am	Curiosity Quest

KENW TV SCHEDULES 3-1 (HD), 3-2 (SD) AND 3-3 (SD)

Our regular KENW-TV Channel (3-2) is listed below in bold. It can be seen by those who use cable or one of our analog translators listed on page 3. Schedule 3-1 is our High Definition (HD) Channel, 3-3 is our Children's/Encore Standard Definition Channel (SD), and 3-4 is our FNX Channel (First Nation Experience). Those with either digital TV sets or analog sets with converter boxes (both require antennas) can receive all four channels in most parts of our viewing area. KENW-TV has digital transmitters in the following cities: Clovis/Portales; Hobbs/Lovington; Roswell; Artesia; Fort Sumner; Tucumcari; Carlsbad; Ruidoso; Mescalero.

KENW-TV's 3-1 schedule (below in italics) is carried by DirecTV in most counties of New Mexico.

KENW-TV's 3-2 schedule (below in bold) is carried on Dish network in most counties of New Mexico.

Wednesday 1st

5:00	3-1	<i>Classical Stretch</i>
5:30	3-1	<i>Wai Lana Yoga</i>
6:00	3-1	<i>Consuelo Mack Wealthtrack</i>
6:30	3-1	<i>Scully/The World Show</i>
7:00	3-1	<i>Travelogue China</i>
7:30	3-1	<i>Destination Craft with Jim West</i>
8:00	3-1	<i>Leaning Out</i>
9:00	3-1	<i>Craftsman's Legacy</i>
9:30	3-1	<i>Woodwright's Shop</i>
10:00	3-1	<i>American Woodshop</i>
10:30	3-1	<i>Woodsmith Shop</i>
11:00	3-1	<i>Classical Stretch</i>
11:30	3-1	<i>Sit and Be Fit</i>
12:00	3-1	<i>Sara's Weeknight Meals</i>
12:30	3-1	<i>Cook's Country</i>
1:00	3-1	<i>Masterpiece "Downton Abbey 3," Pt. 1</i>
3:00	3-1	<i>Islands Without Cars</i>
3:30	3-1	<i>How to Cook Well</i>
4:00	3-1	<i>Lidia's Kitchen</i>
4:30	3-1	<i>America's Test Kitchen</i>
5:00	3-1	<i>Story in the Public Square</i>
5:30	3-1	<i>Nightly Business Report</i>
6:00	3-1	<i>PBS NewsHour</i>
7:00	3-2	<i>Nature "American Spring Live: Connections"</i>
	3-1	<i>Hitler's Holocaust Railways</i>
8:00	3-2	<i>Nova "Building the Great Cathedrals"</i>
	3-1	<i>Breakthrough: The Ideas that Changed the World "The Robot"</i>
9:00	3-2	<i>Breakthrough: The Ideas that Changed the World "The Robot"</i>
	3-1	<i>Nature "American Spring Live: Connections"</i>
	3-3	<i>Start Up</i>
9:30	3-3	<i>Music Voyager</i>
10:00	3-2	<i>Second Opinion "Eating Disorders"</i>
	3-1	<i>Amanpour and Company</i>
	3-3	<i>Masterpiece "Downton Abbey 3," Pt. 1</i>
10:30	3-2	<i>This Old House</i>
11:00	3-2	<i>Amanpour and Company</i>
	3-1	<i>PBS NewsHour</i>
12:00	3-2	<i>PBS NewsHour</i>
	3-1	<i>Nova "Building the Great Cathedrals"</i>
	3-3	<i>All Things Bakelite: The Age of Plastic</i>

Thursday 2nd

5:00	3-1	<i>Classical Stretch</i>
5:30	3-1	<i>Wai Lana Yoga</i>
6:00	3-1	<i>IQ: Smartparent</i>
6:30	3-1	<i>Travels with Darley</i>
7:00	3-1	<i>Poland: The Royal Tour</i>
8:00	3-1	<i>Merle Travis: Guitar Man</i>
9:00	3-1	<i>Fons & Porter's Love of Quilting</i>
9:30	3-1	<i>Quilt in a Day</i>
10:00	3-1	<i>Knit and Crochet Now!</i>
10:30	3-1	<i>It's Sew Easy</i>
11:00	3-1	<i>Classical Stretch</i>
11:30	3-1	<i>Happy Yoga</i>
12:00	3-1	<i>Christopher Kimball's Milk Street</i>
12:30	3-1	<i>Simply Ming</i>
1:00	3-1	<i>Mexico: One Plate at a Time</i>
1:30	3-1	<i>Joanne Weir's Plates and Places</i>
2:00	3-1	<i>Nature "American Spring Live: Connections"</i>
3:00	3-1	<i>Born to Explore with Richard Wies</i>
3:30	3-1	<i>Museum Access</i>
4:00	3-1	<i>Nova "Building the Great Cathedrals"</i>

5:00	3-1	<i>News 3 New Mexico</i>
5:30	3-1	<i>Nightly Business Report</i>
6:00	3-1	<i>PBS NewsHour</i>
7:00	3-2	<i>Frontline "The Mueller Investigation"</i>
	3-1	<i>Search for the Mona Lisa</i>
8:00	3-2	<i>Song of the Mountains</i>
		<i>"Lonesome River Band"</i>
	3-1	<i>Red Green Show</i>
8:30	3-1	<i>You Should Know</i>
9:00	3-2	<i>Sportslook</i>
	3-1	<i>Creative Living</i>
	3-3	<i>Roadtrip Nation: Being You</i>
9:30	3-2	<i>Red Green Show</i>
		<i>"No Tell Boatel"</i>
	3-1	<i>Sportslook</i>
10:00	3-2	<i>Woodsongs "Eric Johnson and Gonzalo Bergara"</i>
	3-1	<i>Amanpour and Company</i>
	3-3	<i>Nature</i>
11:00	3-2	<i>Amanpour and Company</i>
	3-1	<i>PBS NewsHour</i>
	3-3	<i>Nova "Building the Great Cathedrals"</i>
12:00	3-2	<i>PBS NewsHour</i>
	3-1	<i>Masterpiece "Downton Abbey 3," Pt. 1</i>
	3-3	<i>Growing Bolder</i>

Friday 3rd

5:00	3-1	<i>Classical Stretch</i>
5:30	3-1	<i>Wai Lana Yoga</i>
6:00	3-1	<i>America's Heartland</i>
6:30	3-1	<i>Garden Smart</i>
7:00	3-1	<i>Song of the Mountains</i>
8:00	3-1	<i>Bluegrass Underground</i>
8:30	3-1	<i>David Holt's State of Music</i>
9:00	3-1	<i>Wild Nevada</i>
9:30	3-1	<i>Today's Wild West</i>
10:00	3-1	<i>Joy of Painting</i>
10:30	3-1	<i>Amanpour and Company</i>
10:30	3-2	<i>Masterpiece "Les Miserables," Pt. 3</i>
	3-3	<i>Craftsman's Legacy</i>
11:00	3-1	<i>PBS NewsHour</i>
	3-3	<i>American Woodshop</i>
11:30	3-2	<i>Walkin' California "Yosemite"</i>
	3-3	<i>Joy of Painting</i>
12:00	3-2	<i>PBS NewsHour</i>
	3-1	<i>Music Voyager</i>
	3-3	<i>Start Up</i>

KENW-TV on Cable Companies

We are pleased to announce that Plateau TV is now carrying all four channels of KENW-TV on its TV fiber optic service in many cities; for its service area, see http://www.plateau.tv/service_area/. In the Portales area, Yucca Telecom also carries our four TV channels; the Yucca TV coverage area is at <https://yuccatelecom.com/tv/>.

KENW-TV's 3-1 (High Definition, HD) and 3-2 (Standard Definition, SD) program schedules can be seen on the following cable companies:

Alpine, TX: Channel 12 (SD) and Channel 712 (HD), TDS
 Dexter: Channel 3 (SD) and Channel 470 (HD), Cable One
 Ft. Stanton, TX: Channel 6 (SD) and Channel 706 (HD), TDS
 Hobbs: Channel 3 (SD) and Channel 703 (HD), TDS
 Portales: Channel 3 (SD), and Channel 510 (HD), Comcast Cable
 Roswell: Channel 3 (SD), and Channel 470 (HD), Cable One

KENW-TV's 3-2 Schedule (Standard Definition, SD) can be seen on the following cable companies:

Artesia: Channel 3, PVT
 Carlsbad: Channel 3, TDS
 Clovis: Channel 3, Suddenlink
 Dexter: Channel 3, PVT
 Eddy County South: Channel 3, TDS
 Eunice: Channel 3, TDS
 Farwell: Channel 3, Suddenlink
 Ft. Sumner: Channel 3, Reach Broadband
 Hagerman: Channel 3, PVT

Jal: Channel 3, TDS
 Lea County: Channel 3, TDS
 Loving: Channel 3, TDS
 Lovington: Channel 3, TDS
 Melrose: Channel 9, Reach Broadband
 Muleshoe, TX: Channel 5, Reach Broadband
 Texico: Channel 3, Suddenlink
 Tucumcari: Channel 11, Comcast

Saturday, 4th

6:00	3-2	Classic Woodworking "Adirondack Chair"
6:30	3-2	American Woodshop "Malooof Inspired Chair," Pt. 1
7:00	3-2	Kevin Belton's New Orleans Kitchen "My New Orleans Kitchen"
7:30	3-2	America's Test Kitchen
8:00	3-2	Martha Bakes "Dried Fruit"
8:30	3-2	Great British Baking Show "Masterclass," Pt. 2
9:30	3-2	Motorweek
10:00	3-2	P. Allen Smith's Garden Home "Handcrafted"
10:30	3-2	J Schwanke's Life in Bloom
11:00	3-2	Paint This with Jerry Yarnell "In the Shadow of Giants," Pt. 1
	3-1	<i>Steven Raichlen's Project Smoke</i>
11:30	3-2	Joy of Painting "Mountain Seclusion"
	3-1	<i>Ask This Old House</i>
12:00	3-2	Beauty of Oil Painting "Roses and Gold Leaf"
	3-1	<i>This Old House</i>
12:30	3-2	Quilt in a Day "Mr. Roosevelt's Necktie"
	3-1	<i>This Old House</i>
1:00	3-2	Quilting Arts "Go Big or Go Home"
	3-1	<i>Ask This Old House</i>
1:30	3-2	Fons & Porter's Love of Quilting "Cactus Blooms"
	3-1	<i>Motorweek</i>
2:00	3-2	Creative Living
	3-1	<i>Woodwright's Shop</i>
2:30	3-2	Jazzy Vegetarian "Small Bites and Sweet Treats"
	3-1	<i>Chef's Life</i>
3:00	3-2	Knit and Crochet Now "Seasonal Wreaths"
	3-1	<i>Martha Stewart's Cooking School</i>
3:30	3-2	This Old House
	3-1	<i>Martha Bakes</i>
4:00	3-2	Ask This Old House
	3-1	<i>Nature "American Spring Live: Connections"</i>
4:30	3-2	Welcome to My Studio "Cadmium Yellow and Light Medium"
5:00	3-2	Sewing with Nancy "Machine Embroidery in 6 Easy Lessons"
	3-1	<i>PBS NewsHour Weekend</i>
5:30	3-2	It's Sew Easy "Interchangeable Looks"
	3-1	<i>Report from Santa Fe</i>
6:00	3-2	Report from Santa Fe
	3-1	<i>Antiques Roadshow</i>
6:30	3-2	America's Heartland
7:00	3-2	Lawrence Welk Show "Salute to Cole Porter (1973)"
	3-1	<i>Emilio and Gloria Estefan: The Library of Congress Prize for Popular Song</i>
8:00	3-2	Samantha Brown's Places to Love "Central North Island, New Zealand"
8:30	3-2	Red Green Show "No Tell Boatel"
	3-1	<i>Masters of Rhythm: The Afro-Peruvian Way</i>
9:00	3-2	Austin City Limits "Sam Smith/Anderson East"
	3-1	<i>Speakeasy</i>
	3-3	<i>Lawrence Welk Show</i>
10:00	3-2	Nova "Building the Great Cathedrals"
	3-1	<i>Austin City Limits</i>
	3-3	<i>Classic Gospel</i>
11:00	3-2	Nature "American Spring Live: Connections"
	3-1	<i>Nova "Building the Great Cathedrals"</i>
	3-3	<i>Bluegrass Underground</i>
11:30	3-3	<i>Sun Studio Sessions</i>
12:00	3-2	Austin City Limits "Sam Smith/Anderson East"
	3-1	<i>Nature "American Spring Live: Connections"</i>
	3-3	<i>Song of the Mountains</i>

Sunday 5th

6:00	3-2	Painting and Travel "Fort Mose"
6:30	3-2	Second Opinion "Grief"
7:00	3-2	Antiques Roadshow "Billings, MT"
8:00	3-2	Classic Gospel "Statler Brothers"
9:00	3-2	Joy of Music "St. Jan's—Gouda, Holland"
9:30	3-2	Music and the Spoken Word
10:00	3-2	Search for the Mona Lisa
11:00	3-2	CyberWorks and the American Dream
	3-1	<i>Washington Week</i>
11:30	3-1	<i>To the Contrary with Bonnie Erbe</i>
12:00	3-2	Power Over Parkinson's 2
	3-1	<i>Firing Line with Margaret Hoover</i>
12:30	3-2	In Focus
	3-1	<i>Start Up</i>
1:00	3-1	<i>Consuelo Mack Wealthtrack</i>
1:30	3-2	Closer to Truth "What is Analytic Theology?"
	3-1	<i>Market to Market</i>
2:00	3-2	Masterpiece "Downton Abbey 2," Pt. 3
	3-1	<i>P. Allen Smith's Garden Home</i>
2:30	3-1	<i>J Schwanke's Life in Bloom</i>
3:00	3-2	Islands Without Cars "Netherlands' Island of Schiermonnik"
	3-1	<i>Great British Baking Show</i>
3:30	3-2	Second Opinion "Transgender Health"
4:00	3-2	Classic Gospel "Statler Brothers"
	3-1	<i>Nova "Building the Great Cathedrals"</i>
5:00	3-2	Start Up "Con Quesos & Juice Palm"
	3-1	<i>PBS Newshour Weekend</i>
5:30	3-2	Expeditions "Can We Save the Florida Scrub"
	3-1	<i>Gzero World with Iam Bremmer</i>
6:00	3-2	Frontline "The Mueller Investigation"
	3-1	<i>Call the Midwife, Pt. 6</i>
7:00	3-2	Call the Midwife, Pt. 6
	3-1	<i>Masterpiece "Les Miserables," Pt. 4</i>
8:00	3-2	Masterpiece "Les Miserables," Pt. 4
	3-1	<i>Masterpiece "Unforgotten 3," Pt. 5</i>
9:00	3-2	Masterpiece "Unforgotten 3," Pt. 5
	3-1	<i>Korea: The Never-Ending War</i>
	3-3	<i>Daytripper</i>
	3-3	<i>America's Heartland</i>
10:00	3-2	Korea: The Never-Ending War
	3-3	<i>This Old House</i>
10:30	3-3	<i>Ask This Old House</i>
11:00	3-1	<i>Professor T</i>
	3-3	<i>Motorweek</i>
11:30	3-3	<i>Legends of Airpower</i>
12:00	3-2	Nova "Building the Great Cathedrals"
	3-1	<i>Masterpiece "Les Miserables," Pt. 4</i>
	3-3	<i>Nature</i>

Monday 6th

5:00	3-1	<i>Classical Stretch</i>
5:30	3-1	<i>Wai Lana Yoga</i>
6:00	3-1	<i>Nature "American Spring Live: Connections"</i>
7:00	3-1	<i>In the Americas with David Yetman</i>
7:30	3-1	<i>Joseph Rosendo's Travelscope</i>
8:00	3-1	<i>Rick Steve's Europe</i>
8:30	3-1	<i>My Greek Table with Diane Kochila</i>
9:00	3-1	<i>Pati's Mexican Table</i>
9:30	3-1	<i>Kevin Belton's New Orleans Kitchen</i>
10:00	3-1	<i>P. Allen Smith's Garden Home</i>
10:30	3-1	<i>Jazzy Vegetarian</i>
11:00	3-1	<i>Classical Stretch</i>
11:30	3-1	<i>Sit and Be Fit</i>
12:00	3-1	<i>Great British Baking Show</i>
1:00	3-1	<i>Masterpiece "Les Miserables," Pt. 4</i>
2:00	3-1	<i>Masterpiece "Unforgotten 3," Pt. 5</i>
3:00	3-1	<i>Roadtrip Nation</i>
4:00	3-1	<i>America's Heartland</i>
4:30	3-1	<i>Daytripper</i>
5:00	3-1	<i>Scully/The World Show</i>
5:30	3-1	<i>Nightly Business Report</i>
6:00	3-1	<i>PBS NewsHour</i>
7:00	3-2	Antiques Roadshow "Churchill Downs Racetrack," Pt. 1
	3-1	<i>Eva: A-7063</i>

8:00	3-2	Search for the Mona Lisa
8:30	3-1	<i>Call to Remember</i>
9:00	3-2	Independent Lens "Out of State"
	3-1	<i>Antique Roadshow</i>
	3-3	<i>Great British Baking Show</i>
10:00	3-2	Curious Traveler "Quebec City"
	3-1	<i>Amanpour and Company</i>
	3-3	<i>Masterpiece "Les Miserables," Pt. 4</i>
10:30	3-2	Taste of History "Best of Jamaica"
11:00	3-2	Antiques Roadshow "Billings, MT"
	3-1	<i>PBS NewsHour</i>
	3-3	<i>Masterpiece "Unforgotten 3," Pt. 5</i>
12:00	3-2	PBS NewsHour
	3-1	<i>Independent Lens "Out of State"</i>
	3-3	<i>Journey of the Whooping Crane</i>

Tuesday 7th

5:00	3-1	<i>Classical Stretch</i>
5:30	3-1	<i>Wai Lana Yoga</i>
6:00	3-1	<i>Antiques Roadshow</i>
7:00	3-1	<i>Journey of the Whooping Crane</i>
8:00	3-1	<i>Crazy</i>
9:00	3-1	<i>Innovations in Medicine</i>
9:30	3-1	<i>Second Opinion</i>
10:00	3-1	<i>Closer to Truth</i>
10:30	3-1	<i>Stories of the Mind</i>
11:00	3-1	<i>Classical Stretch</i>
11:30	3-1	<i>Wai Lana Yoga</i>
12:00	3-1	<i>Around the Farm Table</i>
12:30	3-1	<i>Taste of History</i>
1:00	3-1	<i>Search for the Mona Lisa</i>
2:00	3-1	<i>Ultimate Restorations</i>
3:00	3-1	<i>Antiques Roadshow</i>
4:00	3-1	<i>Consuelo Mack Wealthtrack</i>
4:30	3-1	<i>Start Up</i>
5:00	3-1	<i>Firing Line with Margaret Hoover</i>
5:30	3-1	<i>Nightly Business Report</i>
6:00	3-1	<i>PBS NewsHour</i>
7:00	3-2	Finding Your Roots "Reporting on the Reporters"
	3-1	<i>Reel South</i>
7:30	3-1	<i>Five Dreamers</i>
8:00	3-2	American Experience "Amelia Earhart"
	3-1	<i>Finding Your Roots</i>
9:00	3-2	You Should Know
	3-1	<i>Pacific Heartbeat</i>
	3-3	<i>Antiques Roadshow</i>
9:30	3-2	Creative Living
10:00	3-2	Frontline "Trump's Trade War"
	3-1	<i>Amanpour and Company</i>
	3-3	<i>History Detectives</i>
11:00	3-2	Amanpour and Company
	3-1	<i>PBS NewsHour</i>
	3-3	<i>Ultimate Restorations</i>
12:00	3-2	PBS NewsHour
	3-1	<i>Frontline "Trump's Trade War"</i>
	3-3	<i>America's Heartland</i>

Wednesday 8th

5:00	3-1	<i>Classical Stretch</i>
5:30	3-1	<i>Wai Lana Yoga</i>
6:00	3-1	<i>Consuelo Mack Wealthtrack</i>
6:30	3-1	<i>Scully/The World Show</i>
7:00	3-1	<i>Travelogue China</i>
7:30	3-1	<i>Destination Craft with Jim West</i>
8:00	3-1	<i>CyberWorks and the American Dream</i>
9:00	3-1	<i>Craftsman's Legacy</i>
9:30	3-1	<i>Woodwright's Shop</i>
10:00	3-1	<i>American Woodshop</i>
10:30	3-1	<i>Woodsmith Shop</i>
11:00	3-1	<i>Classical Stretch</i>
11:30	3-1	<i>Sit and Be Fit</i>
12:00	3-1	<i>Sara's Weeknight Meals</i>
12:30	3-1	<i>Cook's Country</i>
1:00	3-1	<i>Masterpiece "Downton Abby 3," Pt. 2</i>
2:00	3-1	<i>You Are Cordially Invited</i>
2:30	3-1	<i>Rick Steves' Europe</i>
3:00	3-1	<i>Islands Without Cars</i>
3:30	3-1	<i>How to Cook Well</i>
4:00	3-1	<i>Lidia's Kitchen</i>
4:30	3-1	<i>America's Test Kitchen</i>
5:00	3-1	<i>Story in the Public Square</i>

5:30 3-1 *Nightly Business Report*
 6:00 3-1 *PBS NewsHour*
 7:00 3-2 **Nature** "Moose: Life of a Twig Eater"
 3-1 *American Experience* "Amelia Earhart"
 8:00 3-2 **Nova** "Inside the Megafire"
 3-1 *Breakthrough: The Ideas that Changed the World* "The Car"
 9:00 3-2 **Breakthrough: The Ideas that Changed the World** "The Car"
 3-1 *Nature* "Moose: Life of a Twig Eater"
 3-3 *Start Up*
 9:30 3-3 *Music Voyager*
 10:00 3-2 **Second Opinion** "Grief"
 3-1 *Amanpour and Company*
 3-3 *Masterpiece* "Downton Abbey 3," Pt. 2
 10:30 3-2 **This Old House**
 11:00 3-2 **Amanpour and Company**
 3-1 *PBS NewsHour*
 3-3 *You Are Cordially Invited*
 11:30 3-3 *Rick Steves' Europe* "Germany"
 12:00 3-2 **PBS NewsHour**
 3-1 *Nova* "Inside the Megafire"
 3-3 *American Experience* "Amelia Earhart"

Thursday 9th

5:00 3-1 *Classical Stretch*
 5:30 3-1 *Wai Lana Yoga*
 6:00 3-1 *IQ: Smartparent*
 6:30 3-1 *Travels with Darley*
 7:00 3-1 *Finding Your Roots*
 8:00 3-1 *Antiques Roadshow*
 9:00 3-1 *Fons & Porter's Love of Quilting*
 9:30 3-1 *Quilt in a Day*
 10:00 3-1 *Knit and Crochet Now!*
 10:30 3-1 *It's Sew Easy*
 11:00 3-1 *Classical Stretch*
 11:30 3-1 *Happy Yoga*
 12:00 3-1 *Christopher Kimball's Milk Street*
 12:30 3-1 *Simply Ming*
 1:00 3-1 *Mexico – One Plate at a Time*
 1:30 3-1 *Joanne Weir's Plates and Places*
 2:00 3-1 *Nature* "Moose: Life of a Twig Eater"
 3:00 3-1 *Born to Explore with Richard Wies*
 3:30 3-1 *Museum Access*
 4:00 3-1 *Nova* "Inside the Megafire"
 5:00 3-1 *Americas Now*
 5:30 3-1 *Nightly Business Report*
 6:00 3-1 *PBS NewsHour*
 7:00 3-2 **Frontline** "Trump's Trade War"
 3-1 *Dialogue in Metal*
 8:00 3-2 **Song of the Mountains** "Giles Mountain String Band"
 3-1 *Red Green Show*
 8:30 3-1 *You Should Know*
 9:00 3-2 **SportsLook**
 3-1 *Creative Living*
 3-3 *Breakthrough: The Ideas that Change the World* "The Telescope"
 9:30 3-2 **Red Green Show** "Cell Hell"
 3-1 *SportsLook*
 10:00 3-2 **Woodsongs** "Ben Sollee and Luke Bulla"
 3-1 *Amanpour and Company*
 3-3 *Nature*
 11:00 3-2 **Amanpour and Company**
 3-1 *PBS NewsHour*
 3-3 *Nova* "Inside the Megafire"
 12:00 3-2 **PBS NewsHour**
 3-1 *Masterpiece* "Downton Abbey 3," Pt. 2
 3-3 *Growing Bolder*

Friday 10th

5:00 3-1 *Classical Stretch*
 5:30 3-1 *Wai Lana Yoga*
 6:00 3-1 *America's Heartland*
 6:30 3-1 *Garden Smart*
 7:00 3-1 *Song of the Mountains*
 8:00 3-1 *Bluegrass Underground*
 8:30 3-1 *David Holt's State of Music*
 9:00 3-1 *Wild Nevada*
 9:30 3-1 *Today's Wild West*
 10:00 3-1 *Joy of Painting*

10:30 3-1 *Beauty of Oil Painting*
 11:00 3-1 *Classical Stretch*
 11:30 3-1 *Sit and Be Fit*
 12:00 3-1 *This Old House Hour*
 1:00 3-1 *Make It Artsy*
 1:30 3-1 *Welcome to My Studio*
 2:00 3-1 *Growing Bolder*
 2:30 3-1 *Weekends with Yankee*
 3:00 3-1 *Journeys in Japan*
 3:30 3-1 *Dining with the Chef*
 4:00 3-1 *In Good Shape: The Health Show*
 4:30 3-1 *Gzero World with Ian Bremmer*
 5:00 3-1 *Great Decisions in Foreign Policy*
 5:30 3-1 *Nightly Business Report*
 6:00 3-1 *PBS NewsHour*
 7:00 3-2 **Market to Market**
 3-1 *Washington Week*
 7:30 3-2 **Consuelo Mack Wealthtrack**
 3-1 *Firing Line with Margaret Hoover*
 8:00 3-2 **Washington Week**
 3-1 *Nova* "Inside the Megafire"
 8:30 3-2 **Firing Line with Margaret Hoover**
 9:00 3-2 **Live From Lincoln Center**
 "Cynthia Erivo in Concert"
 3-1 *Frontline* "Trump's Trade War"
 3-3 *This Old House Hour*
 10:00 3-2 **Masterpiece** "Les Miserables," Pt. 4
 3-1 *Amanpour and Company*
 3-3 *Woodwright's Shop*
 10:30 3-3 *Craftsman's Legacy*
 11:00 3-2 **Great Museums: The Art of Islam at the Met and the Louvre**
 3-1 *PBS NewsHour*
 3-3 *American Woodshop*
 11:30 3-3 *Joy of Painting*
 12:00 3-2 **PBS NewsHour**
 3-1 *Music Voyager*
 3-3 *Start Up*

Saturday 11th

6:00 3-2 **Classic Woodworking**
 "Wenge Tea Box"
 6:30 3-2 **American Woodshop**
 "Malool Inspired Chair," Pt. 2
 7:00 3-2 **Kevin Belton's New Orleans Kitchen** "My Kids' Favorites"
 7:30 3-2 **America's Test Kitchen**
 8:00 3-2 **Martha Bakes** "Apples"
 8:30 3-2 **Great British Baking Show**
 "Masterclass," Pt. 3
 9:30 3-2 **Motorweek**
 10:00 3-2 **P. Allen Smith's Garden Home**
 "Farm School"
 10:30 3-2 **J Schwanke's Life in Bloom**
 11:00 3-2 **Paint This with Jerry Yarnell**
 "In the Shadow of Giants," Pt. 2
 3-1 *Steven Raichlen's Project Smoke*
 11:30 3-2 **Joy of Painting** "Crimson Oval"
 3-1 *Ask This Old House*
 12:00 3-2 **Beauty of Oil Painting**
 "Egret Portrait"
 3-1 *This Old House*
 12:30 3-2 **Quilt in a Day** "Silent Star and Comfort Quilt"
 3-1 *This Old House*
 1:00 3-2 **Quilting Arts** "Accessorize"
 3-1 *Ask This Old House*
 1:30 3-2 **Fons & Porter's Love of Quilting**
 "West Point"
 3-1 *Motorweek*
 2:00 3-2 **Creative Living**
 3-1 *Woodwright's Shop*
 2:30 3-2 **Jazzy Vegetarian** "Tex-Mex with a Twist"
 3-1 *Chef's Life*
 3:00 3-2 **Knit and Crochet Now** "The Cocoon Craze"
 3-1 *Martha Stewart's Cooking School*
 3:30 3-2 **This Old House**
 3-1 *Martha Bakes*
 4:00 3-2 **Ask This Old House** "Fireplace Restoration, Porch Swing"
 3-1 *Nature* "Moose: Life of a Twig Eater"

4:30 3-2 **Welcome to My Studio**
 "Cadmium Orange"
 5:00 3-2 **Sewing with Nancy** "Ultimate Serger Techniques," Pt. 1
 3-1 *PBS NewsHour Weekend*
 5:30 3-2 **It's Sew Easy** "Convertible Clothes"
 3-1 *Report from Santa Fe*
 6:00 3-2 **Report from Santa Fe**
 3-1 *Antiques Roadshow*
 6:30 3-2 **America's Heartland**
 7:00 3-2 **Lawrence Welk Show** "Mother's Day (1956)"
 3-1 *Live From Lincoln Center*
 "Cynthia Erivo"
 8:00 3-2 **Travel Detective with Peter Green**
 "Hidden Gems of Mazatlan"
 3-1 *Search for the Mona Lisa*
 8:30 3-2 **Red Green Show** "The Folk Art Convention"
 9:00 3-2 **Austin City Limits** "John Prine"
 3-1 *Speakeasy*
 3-3 *Lawrence Welk Show*
 10:00 3-2 **Nova** "Inside the Megafire"
 3-1 *Austin City Limits*
 3-3 *Classic Gospel*
 11:00 3-2 **Nature** "Moose: Life of a Twig Eater"
 3-1 *Nova* "Inside the Megafire"
 3-3 *Bluegrass Underground*
 11:30 3-3 *Sun Studio Sessions*
 12:00 3-2 **Austin City Limits** "John Prine"
 3-1 *Nature* "Moose: Life of a Twig Eater"
 3-3 *Song of the Mountains*

Sunday 12th

6:00 3-2 **Painting and Travel** "Inside Passage"
 6:30 3-2 **Second Opinion** "Geriatric Oncology"
 7:00 3-2 **Antiques Roadshow** "Billings, Mt"
 8:00 3-2 **Classic Gospel** "Goodman Revival"
 9:00 3-2 **Joy of Music** "Favorite – Organs & Instruments"
 9:30 3-2 **Music and the Spoken Word**
 10:00 3-2 **Safe Enough?** (seatbelts on school buses)
 11:00 3-2 **Revolutionizing Dementia Care**
 3-1 *Washington Week*
 11:30 3-1 *To the Contrary with Bonnie Erbe*
 12:00 3-2 **Cultura**
 3-1 *Firing Line with Margaret Hoover*
 12:30 3-2 **In Focus**
 3-1 *Start Up*
 1:00 3-1 *Consuelo Mack Wealthtrack*
 1:30 3-2 **Closer to Truth** "Mind in the World: A Tribute to Hubert Dreyfus"
 3-1 *Market to Market*
 2:00 3-2 **Masterpiece** "Downton Abbey 2," Pt. 4
 3-1 *Great Performances at the Met*
 "Adriana Lecouvreur"
 3:00 3-2 **Islands Without Cars**
 "Michigan's Mackinac Island"
 3:30 3-2 **Second Opinion** "Atrial Fibrillation"
 4:00 3-2 **Classic Gospel** "Goodman Revival"
 4:30 3-1 *Walkin' California* "Yosemite"
 5:00 3-2 **Start Up** "J. Rieger & Co./Kansas City, MO"
 3-1 *PBS NewsHour Weekend*
 5:30 3-2 **Expeditions** "The Hidden Side of Table Rock"
 3-1 *Gzero World with Ian Bremmer*
 6:00 3-2 **Voyage of Adventure: Retracing Donelson's Journey**
 3-1 *Call the Midwife*
 7:00 3-2 **Call the Midwife**, Pt. 7
 3-1 *Masterpiece* "Les Miserables"
 8:00 3-2 **Masterpiece** "Les Miserables," Pt. 5
 3-1 *Masterpiece* "Unforgotten 3," Pt. 6
 9:00 3-2 **Masterpiece** "Unforgotten 3," Pt. 6
 3-1 *Independent Lens* "Out of State"
 3-3 *Daytripper*
 9:30 3-3 *America's Heartland*
 10:00 3-2 **American Experience**
 "Amelia Earhart"
 3-1 *Rudy and Neal Go Fishing*
 3-3 *This Old House*

10:30 3-1 *Bluegrass Underground*
 3-3 *Ask This Old House*
11:00 3-2 Crazy
 3-1 *Professor T*
 3-3 *Motorweek*
 11:30 3-3 *Legends of Airpower*
12:00 3-2 Nova "Inside the Megafire"
 3-1 *Masterpiece "Les Miserables," Pt. 5*
 3-3 *Nature*

Monday 13th

5:00 3-1 *Classical Stretch*
 5:30 3-1 *Wai Lana Yoga*
 6:00 3-1 *Nature "Moose: Life of a Twig Eater"*
 7:00 3-1 *In the Americas with David Yetman*
 7:30 3-1 *Joseph Rosendo's Travelscope*
 8:00 3-1 *Rick Steve's Europe*
 8:30 3-1 *My Greek Table with Diane Kochila*
 9:00 3-1 *Pati's Mexican Table*
 9:30 3-1 *Kevin Belton's New Orleans Kitchen*
 10:00 3-1 *P. Allen Smith's Garden Home*
 10:30 3-1 *Jazzy Vegetarian*
 11:00 3-1 *Classical Stretch*
 11:30 3-1 *Sit and Be Fit*
 12:00 3-1 *Great British Baking Show*
 1:00 3-1 *Masterpiece "Les Miserables," Pt. 5*
 2:00 3-1 *Masterpiece "Unforgotten 3," Pt. 6*
 3:00 3-1 *Roadtrip Nation*
 3:30 3-1 *Urban Conversion*
 4:00 3-1 *America's Heartland*
 4:30 3-1 *Daytripper*
 5:00 3-1 *Scully/The World Show*
 5:30 3-1 *Nightly Business Report*
 6:00 3-1 *PBS NewsHour*
7:00 3-2 Antiques Roadshow "Churchill Downs Racetrack," Pt. 2
 3-1 *Secret Weapon that Won World War*
8:00 3-2 Antiques Roadshow
 "Billings, MT," Pt. 3
 3-1 *Blackbird: Legacy of Innovation*
9:00 3-2 Independent Lens "Harvest Season"
 3-1 *Antiques Roadshow*
 3-3 *Great British Baking Show*
 10:00 3-1 *Amanpour and Company*
 3-3 *Masterpiece "Les Miserables," Pt. 5*
10:30 3-2 Taste of History "George Washington's Whiskey"
11:00 3-2 Antiques Roadshow
 "Billings, MT," Pt. 2
 3-1 *PBS NewsHour*
 3-3 *Masterpiece "Unforgotten 3," Pt. 6*
12:00 3-2 PBS NewsHour
 3-1 *Independent Lens "Harvest Season"*
 3-3 *Secret Weapon that Won World War II*

Tuesday 14th

5:00 3-1 *Classical Stretch*
 5:30 3-1 *Wai Lana Yoga*
 6:00 3-1 *Antiques Roadshow*
 7:00 3-1 *Blackbird: Legacy of Innovation*
 8:00 3-1 *Safe Enough?*
 9:00 3-1 *Innovations in Medicine*
 9:30 3-1 *Second Opinion*
 10:00 3-1 *Closer to Truth*
 10:30 3-1 *Stories of the Mind*
 11:00 3-1 *Classical Stretch*
 11:30 3-1 *Wai Lana Yoga*
 12:00 3-1 *Around the Farm Table*
 12:30 3-1 *Taste of History*
 1:00 3-1 *Secret Weapon that WW II*
 2:00 3-1 *Ultimate Restorations*
 3:00 3-1 *Antiques Roadshow*
 4:00 3-1 *Consuelo Mack Wealthtrack*
 4:30 3-1 *Start Up*
 5:00 3-1 *Firing Line with Margaret Hoover*
 5:30 3-1 *Nightly Business Report*
 6:00 3-1 *PBS NewsHour*
7:00 3-2 CyberWorks and the American Dream
 3-1 *Reel South*
 7:30 3-1 *Rudy and Neal Go Fishing*

8:00 3-2 American Experience
 "Annie Oakley"
 3-1 *10 Modern Marvels that Changed America*
9:00 3-2 You Should Know
 3-1 *Pacific Heartbreak*
 3-3 *Antiques Roadshow*
9:30 3-2 Creative Living
10:00 3-2 Frontline "One Day in Gaza"
 3-1 *Amanpour and Company*
 3-3 *History Detectives*
11:00 3-2 Amanpour and Company
 3-1 *PBS NewsHour*
 3-3 *Ultimate Restorations*
12:00 3-2 PBS NewsHour
 3-1 *Frontline "One Day in Gaza"*
 3-3 *America's Heartland*

Wednesday 15th

5:00 3-1 *Classical Stretch*
 5:30 3-1 *Wai Lana Yoga*
 6:00 3-1 *Consuelo Mack Wealthtrack*
 6:30 3-1 *Scully/The World Show*
 7:00 3-1 *Travelogue China*
 7:30 3-1 *Destination Craft with Jim West*
 8:00 3-1 *Dialogue in Metal*
 9:00 3-1 *Craftsman's Legacy*
 9:30 3-1 *Woodwright's Shop*
 10:00 3-1 *American Woodshop*
 10:30 3-1 *Woodsmith Shop*
 11:00 3-1 *Classical Stretch*
 11:30 3-1 *Sit and Be Fit*
 12:00 3-1 *Sara's Weeknight Meals*
 12:30 3-1 *Cook's Country*
 1:00 3-1 *Masterpiece "Downton Abbey 3," Pt. 3*
 2:00 3-1 *You Are Cordially Invited*
 2:30 3-1 *Rick Steves' Europe*
 3:00 3-1 *Islands Without Cars*
 3:30 3-1 *How to Cook Well*
 4:00 3-1 *Lidia's Kitchen*
 4:30 3-1 *America's Test Kitchen*
 5:00 3-1 *Story in the Public Square*
 5:30 3-1 *Nightly Business Report*
 6:00 3-1 *PBS NewsHour*
7:00 3-2 Nature "Equus: Story of the Horse," Pt. 1
 3-1 *American Experience "Annie Oakley"*
8:00 3-2 Nova "First Horse Warriors"
 3-1 *Breakthrough: Ideas that Changed the World "The Rocket"*
9:00 3-2 Breakthrough: The Ideas that Change the World "The Rocket"
 3-1 *Nature "Equus: Story of the Horse," Pt. 1*
 3-3 *Start Up*
 9:30 3-3 *Music Voyager*
10:00 3-2 Second Opinion "Geriatric Oncology"
 3-1 *Amanpour and Company*
 3-3 *Masterpiece "Downton Abbey 3," Pt. 3*
10:30 3-2 This Old House
11:00 3-2 Amanpour and Company
 3-1 *PBS NewsHour*
 3-3 *You're Cordially Invited*
 11:30 3-3 *Rick Steves' Europe "Frankfurt"*
12:00 3-2 PBS NewsHour
 3-1 *Nova "First Horse Warriors"*
 3-3 *American Experience "Annie Oakley"*

Thursday 16th

5:00 3-1 *Classical Stretch*
 5:30 3-1 *Wai Lana Yoga*
 6:00 3-1 *IQ: Smartparent*
 6:30 3-1 *Travels with Darley*
 7:00 3-1 *10 Modern Marvels that Changed America*
 8:00 3-1 *Antiques Roadshow*
 9:00 3-1 *Fons & Porter's Love of Quilting*
 9:30 3-1 *Quilt in a Day*
 10:00 3-1 *Knit and Crochet Now!*
 10:30 3-1 *It's Sew Easy*
 11:00 3-1 *Classical Stretch*
 11:30 3-1 *Happy Practice*
 12:00 3-1 *Christopher Kimball's Milk Street*
 12:30 3-1 *Simply Ming*

1:00 3-1 *Mexico: One Plate at a Time*
 1:30 3-1 *Joanne Weir's Plates and Places*
 2:00 3-1 *Nature "Equus: Story of the Horse"*
 3:00 3-1 *Born to Explore with Richard Wies*
 3:30 3-1 *Museum Access*
 4:00 3-1 *Nova "First Horse Warriors"*
 5:00 3-1 *Americas Now*
 5:30 3-1 *Nightly Business Report*
 6:00 3-1 *PBS NewsHour*
7:00 3-2 Frontline "One Day in Gaza"
 3-1 *Awakening in Taos: The Mabel Dodge Luhan Story*
8:00 3-2 Song of the Mountains
 "Antsy McClain & The Trailer Park Troubadours"
 3-1 *Red Green Show*
 8:30 3-1 *You Should Know*
9:00 3-2 Today's Wild West "Ghost Train"
 3-1 *Creative Living*
 3-3 *Breakthrough: The Ideas that Change the World "The Airplane"*
9:30 3-2 Red Green Show "Cart Blanche"
 3-1 *Home Diagnosis*
10:00 3-2 Woodsongs "Victor Wainwright & The Train and Birds of Chicago"
 3-1 *Amanpour and Company*
 3-3 *Nature*
11:00 3-2 Amanpour and Company
 3-1 *PBS NewsHour*
 3-3 *Nova "First Horse Warriors"*
12:00 3-2 PBS NewsHour
 3-1 *Masterpiece "Downton Abbey 3," Pt. 3*
 3-3 *Growing Boulder*

Friday 17th

5:00 3-1 *Classical Stretch*
 5:30 3-1 *Wai Lana Yoga*
 6:00 3-1 *America's Heartland*
 6:30 3-1 *Garden Smart*
 7:00 3-1 *Song of the Mountains*
 8:00 3-1 *Bluegrass Underground*
 8:30 3-1 *David Holt's State of Music*
 9:00 3-1 *Wild Nevada*
 9:30 3-1 *Today's Wild West*
 10:00 3-1 *Joy of Painting*
 10:30 3-1 *Beauty of Oil Painting*
 11:00 3-1 *Classical Stretch*
 11:30 3-1 *Sit and Be Fit*
 12:00 3-1 *This Old House Hour*
 1:00 3-1 *Make It Artsy*
 1:30 3-1 *Welcome to My Studio*
 2:00 3-1 *Growing Bolder*
 2:30 3-1 *Weekends with Yankee*
 3:00 3-1 *Journeys in Japan*
 3:30 3-1 *Dining with the Chef*
 4:00 3-1 *In Good Shape: The Health Show*
 4:30 3-1 *Gzero World with Ian Bremmer*
 5:00 3-1 *Great Decisions in Foreign Policy*
 5:30 3-1 *Nightly Business Report*
 6:00 3-1 *PBS NewsHour*
7:00 3-2 Market to Market
 3-1 *Washington Week*
7:30 3-2 Consuelo Mack Wealthtrack
 3-1 *Firing Line with Margaret Hoover*
8:00 3-2 Washington Week
 3-1 *Nova "First Horse Warriors"*
8:30 3-2 Firing Line with Margaret Hoover
9:00 3-2 Live From Lincoln Center
 "Annaleigh Ashford in Concert"
 3-3 *This Old House Hour*
10:00 3-2 Masterpiece "Les Miserables," Pt. 5
 3-1 *Amanpour and Company*
 3-3 *Woodwright's Shop*
 10:30 3-3 *Craftsman's Legacy*
11:00 3-2 CyberWorks and the American Dream
 3-1 *PBS NewsHour*
 3-3 *American Woodshop*
 11:30 3-3 *Joy of Painting*
12:00 3-2 PBS NewsHour
 3-1 *Music Voyager*
 3-3 *Start Up*

Saturday 18th

6:00	3-2	Classic Woodworking "Live Edge Coffee"
6:30	3-2	Woodsmith Shop "Details of Craftsmanship"
7:00	3-2	Kevin Belton's New Orleans Kitchen "Java Jive"
7:30	3-2	America's Test Kitchen
8:00	3-2	Martha Bakes "Cultured Dairy"
8:30	3-2	Great British Baking "Cake"
9:30	3-2	Motorweek
10:00	3-2	P. Allen Smith's Garden Home "Living Poultry Museum"
10:30	3-2	J. Schwanke's Life in Bloom
11:00	3-2	Paint This with Jerry Yarnell "In the Shadow of Giants," Pt. 3
	3-1	<i>Steven Raichlen's Project Smoke</i>
11:30	3-2	Joy of Painting "Autumn Distinction"
	3-1	<i>Ask This Old House</i>
12:00	3-2	Beauty of Oil Painting "Poppies and Daisy's"
	3-1	<i>This Old House</i>
12:30	3-2	Quilt in a Day "Radio Windmill and Sky Rocket"
	3-1	<i>This Old House</i>
1:00	3-2	Quilting Arts "What Color is Your Garden?"
	3-1	<i>Ask This Old House</i>
1:30	3-2	Fons & Porter's Love of Quilting "Kitchen Windows"
	3-1	<i>Motorweek</i>
2:00	3-2	Creative Living
	3-1	<i>Woodwright's Shop</i>
2:30	3-2	Jazzy Vegetarian "Jazzin' Up Veggies"
	3-1	<i>Chef's Life</i>
3:00	3-2	Knit and Crochet Now "Snuggly Slippers"
	3-1	<i>Martha Stewart's Cooking School</i>
3:30	3-2	This Old House
	3-1	<i>Martha Bakes</i>
4:00	3-2	Ask This Old
	3-1	<i>Nature "Equus: Story of the Horse"</i>
4:30	3-2	Welcome to My Studio "Cadmium Red Light"
5:00	3-2	Sewing with Nancy "Ultimate Serger Techniques," Pt. 2
	3-1	<i>PBS NewsHour Weekend</i>
5:30	3-2	It's Sew Easy "Accessorize Up or Down"
	3-1	<i>Report from Santa Fe</i>
6:00	3-2	Report from Santa Fe
	3-1	<i>Antiques Roadshow</i>
6:30	3-2	America's Heartland
7:00	3-2	Lawrence Welk Show "Childhood Memories (1972)"
	3-1	<i>Live from Lincoln Center</i>
		"Annaleigh Ashford"
8:00	3-2	Travel Detective with Peter Green "Puerto Rico Recovery"
	3-1	<i>Great Museums: The Art of Islam at the Met and the Louvre</i>
8:30	3-2	Red Green Show "Mr. Clean"
9:00	3-2	Austin City Limits "St. Vincent"
	3-1	<i>Speakeasy</i>
	3-3	<i>Lawrence Welk Show</i>
10:00	3-2	Nova "First Horse Warriors"
	3-1	<i>Austin City Limits</i>
	3-3	<i>Classic Gospel</i>
11:00	3-2	Nature "Equus: Story of the Horse," Pt. 1
	3-1	<i>Nova "First Horse Warriors"</i>
	3-3	<i>Bluegrass Underground</i>
11:30	3-3	<i>Sun Studio Sessions</i>
12:00	3-2	Austin City Limits "St. Vincent"
	3-1	<i>Nature "Equus: Story of the Horse"</i>
	3-3	<i>Song of the Mountains</i>

Sunday 19th

6:00	3-2	Painting and Travel "The Sea Turtle"
6:30	3-2	Second Opinion "Foot Pain"
7:00	3-2	Antiques Roadshow "Billings, MT"
8:00	3-2	Classic Gospel "Heaven"

9:00	3-2	Joy of Music "American in Paris"
9:30	3-2	Music and the Spoken Word
10:00	3-2	Breakthrough: Ideas that Changed the World "The Telescope"
11:00	3-2	Voyage of Adventure: Retracing Donelson's Journey
	3-1	<i>Washington Week</i>
11:30	3-1	<i>To the Contrary with Bonnie Erbe</i>
12:00	3-2	PBS Previews "Chasing the Moon"
	3-1	<i>Firing Line with Margaret Hoover</i>
12:30	3-2	In Focus
	3-1	<i>Start Up</i>
1:00	3-1	<i>Consuelo Mack Wealthtrack</i>
1:30	3-2	Closer to Truth "Given Theology, What's Evolution?"
	3-1	<i>Market to Market</i>
2:00	3-2	Masterpiece "Downton Abby 2," Pt. 5
	3-1	<i>P. Allen Smith's Garden Home</i>
2:30	3-1	<i>J Schwanke's Life in Bloom</i>
3:00	3-2	Islands Without Cars "Sweden's Southwestern Archipelago"
	3-1	<i>Great British Baking Show</i>
3:30	3-2	Second Opinion "Eating Disorders"
4:00	3-2	Classic Gospel "Heaven"
	3-1	<i>Nova "First Horse Warriors"</i>
5:00	3-2	Start Up "Flipside Ninja Park/Lowell, AR"
	3-1	<i>PBS Newshour Weekend</i>
5:30	3-2	Expeditions with Patrick McMillan "Hummingbirds-Life in Fast-Forward"
	3-1	<i>Gzero World with Ian Bremmer</i>
6:00	3-2	Great Museums: The Art of Islam at the Met and he Louvre
	3-1	<i>Call the Midwife</i>
7:00	3-2	Call the Midwife , Pt. 8
	3-1	<i>Masterpiece "Les Miserables," Pt. 6</i>
8:00	3-2	Masterpiece "Les Miserables," Pt. 6
8:30	3-1	<i>Bad Deal-My Vietnam War Story</i>
9:00	3-1	<i>Independent Lens "Harvest Season"</i>
	3-3	<i>Daytripper</i>
9:30	3-2	Emilio and Gloria Estefan: The Library of Congress Gershwin Prize for Popular Music
	3-3	<i>America's Heartland</i>
10:00	3-3	<i>This Old House</i>
10:30	3-1	<i>Bluegrass Underground</i> "Flatt Lonesome"
	3-3	<i>Ask This Old House</i>
11:00	3-2	D-Day at Pointe-du-Hoc
	3-1	<i>Professor T</i>
	3-3	<i>Motorweek</i>
11:30	3-3	<i>Legends of Airpower</i>
12:00	3-2	Nova "First Horse Warriors"
	3-1	<i>Masterpiece "Les Miserables," Pt. 6</i>
	3-3	<i>Nature "Equus: Story of the Horse," Pt. 1</i>

Monday 20th

5:00	3-1	<i>Classical Stretch</i>
5:30	3-1	<i>Wai Lana Yoga</i>
6:00	3-1	<i>Nature "Equus: Story of the Horse," Pt. 1</i>
7:00	3-1	<i>In the Americas with David Yetman</i>
7:30	3-1	<i>Joseph Rosendo's Travelscope</i>
8:00	3-1	<i>Rick Steve's Europe</i>
8:30	3-1	<i>Nick Stellino: Storyteller in the Kitchen</i>
9:00	3-1	<i>Pati's Mexican Table</i>
9:30	3-1	<i>Kevin Belton's New Orleans Kitchen</i>
10:00	3-1	<i>P. Allen Smith's Garden Home</i>
10:30	3-1	<i>Jazzy Vegetarian</i>
11:00	3-1	<i>Classical Stretch</i>
11:30	3-1	<i>Sit and Be Fit</i>
12:00	3-1	<i>Great British Baking Show</i>
1:00	3-1	<i>Masterpiece "Les Miserables," Pt. 6</i>
2:30	3-1	<i>On Story</i>
3:00	3-1	<i>Roadtrip Nation</i>
3:30	3-1	<i>Urban Conversion</i>
4:00	3-1	<i>America's Heartland</i>
4:30	3-1	<i>Daytripper</i>
5:00	3-1	<i>Scully/The World Show</i>
5:30	3-1	<i>Nightly Business Report</i>
6:00	3-1	<i>PBS NewsHour</i>

7:00	3-2	Antiques Roadshow "Churchill Downs Racetrack," Pt. 3
	3-1	<i>Norman Mineta and His Legacy: An American Story</i>
8:00	3-2	Revolutionizing Dementia Care
	3-1	<i>And Then They Came for Us</i>
9:00	3-2	Independent Lens "Wrestle"
	3-1	<i>Antiques Roadshow</i>
	3-3	<i>Great British Baking Show</i>
10:00	3-1	<i>Amanpour and Company</i>
	3-3	<i>Masterpiece "Les Miserables"</i>
10:30	3-2	Taste of History "Peace and Autonomy"
11:00	3-2	Antiques Roadshow "Biloxi, MS," Pt. 1
	3-1	<i>PBS NewsHour</i>
11:30	3-3	<i>Bad Deal-My Vietnam Story</i>
12:00	3-2	PBS NewsHour
	3-1	<i>Independent Lens "Wrestle"</i>
	3-3	<i>Norman Mineta and His Legacy: An American Story</i>

Tuesday 21st

5:00	3-1	<i>Classical Stretch</i>
5:30	3-1	<i>Wai Lana Yoga</i>
6:00	3-1	<i>Antiques Roadshow</i>
7:00	3-1	<i>And then They Came for Us</i>
8:00	3-1	<i>Revolutionizing Dementia Care</i>
9:00	3-1	<i>Innovations in Medicine</i>
9:30	3-1	<i>Second Opinion</i>
10:00	3-1	<i>Closer to Truth</i>
10:30	3-1	<i>Stories of the Mind</i>
11:00	3-1	<i>Classical Stretch</i>
11:30	3-1	<i>Wai Lana Yoga</i>
12:00	3-1	<i>Around the Farm Table</i>
12:30	3-1	<i>Taste of History</i>
1:00	3-1	<i>Norman Mineta and His Legacy: An American Story</i>
2:00	3-1	<i>Ultimate Restorations</i>
3:00	3-1	<i>Antiques Roadshow</i>
4:00	3-1	<i>Consuelo Mack Wealthtrack</i>
4:30	3-1	<i>Start Up</i>
5:00	3-1	<i>Firing Line with Margaret Hoover</i>
5:30	3-1	<i>Nightly Business Report</i>
6:00	3-1	<i>PBS NewsHour</i>
7:00	3-2	Awakening in Taos: The Mabel Dodge Luhan Story
	3-1	<i>Reel South</i>
8:00	3-2	American Experience "Emma Goldman"
	3-1	<i>Awakening in Taos: The Mabel Dodge Luhan Story</i>
9:00	3-2	You Should Know
	3-1	<i>Pacific Heartbeat</i>
	3-3	<i>Antiques Roadshow</i>
9:30	3-2	Creative Living
10:00	3-2	Frontline "Supreme Revenge"
	3-1	<i>Amanpour and Company</i>
	3-3	<i>History Detectives</i>
11:00	3-2	Amanpour and Company
	3-1	<i>PBS NewsHour</i>
	3-3	<i>Ultimate Restorations</i>
12:00	3-2	PBS NewsHour
	3-1	<i>Frontline "Supreme Revenge"</i>
	3-3	<i>America's Heartland</i>

Wednesday 22nd

5:00	3-1	<i>Classical Stretch</i>
5:30	3-1	<i>Wai Lana Yoga</i>
6:00	3-1	<i>Consuelo Mack Wealthtrack</i>
6:30	3-1	<i>Scully/The World Show</i>
7:00	3-1	<i>Travelogue China</i>
7:30	3-1	<i>Expeditions with Patrick McMillan</i>
8:00	3-1	<i>Great Museums: The Art of Islam at the Met and the Louvre</i>
9:00	3-1	<i>Craftsman's Legacy</i>
9:30	3-1	<i>Woodwright's Shop</i>
10:00	3-1	<i>American Woodshop</i>
10:30	3-1	<i>Woodsmith Shop</i>
11:00	3-1	<i>Classical Stretch</i>
11:30	3-1	<i>Sit and Be Fit</i>
12:00	3-1	<i>Sara's Weeknight Meals</i>

12:30 3-1 *Cook's Country*
 1:00 3-1 *Masterpiece "Downton Abbey 3," Pt. 4*
 2:00 3-1 *Invisible Women: Forgotten Artists of Florence*
 2:30 3-1 *Rick Steves' Europe*
 3:00 3-1 *Islands Without Cars*
 3:30 3-1 *How to Cook Well*
 4:00 3-1 *Lidia's Kitchen*
 4:30 3-1 *America's Test Kitchen*
 5:00 3-1 *Story in the Public Square*
 5:30 3-1 *Nightly Business Report*
 6:00 3-1 *PBS NewsHour*
 7:00 3-2 **Nature** "Equus: Story of the Horse," Pt. 2
 3-1 *American Experience*
"Emma Goldman"
 8:00 3-2 **Nova** "Lost Viking Army"
 3-1 *Breakthrough: Ideas that Changed the World "The Smartphone"*
 9:00 3-2 **Breakthrough: The Ideas that Change the World** "The Smartphone"
 3-1 *Nature "Equus: Story of the Horse," Pt. 2*
 3-3 *Start Up*
 9:30 3-3 *Music Voyager*
 10:00 3-2 **Second Opinion** "Foot Pain"
 3-1 *Amanpour and Company*
 3-3 *Masterpiece "Downton Abbey 3," Pt. 4*
 10:30 3-2 **This Old House**
 11:00 3-2 **Amanpour and Company**
 3-1 *PBS NewsHour*
 3-3 *Invisible Women: Forgotten Artists of Florence*
 11:30 3-3 *Rick Steves' Europe "Bulgaria"*
 12:00 3-2 **PBS NewsHour**
 3-1 *Nova "Lost Viking Army"*
 3-3 *American Experience*
"Emma Goldman"

Thursday 23rd

5:00 3-1 *Classical Stretch*
 5:30 3-1 *Wai Lana Yoga*
 6:00 3-1 *IQ: Smartparent*
 6:30 3-1 *Travels with Darley*
 7:00 3-1 *10 Streets that Changed America*
 8:00 3-1 *Antiques Roadshow*
 9:00 3-1 *Fons & Porter's Love of Quilting*
 9:30 3-1 *Quilt in a Day*
 10:00 3-1 **Knit and Crochet Now!**
 10:30 3-1 *It's Sew Easy*
 11:00 3-1 *Classical Stretch*
 11:30 3-1 *Happy Yoga*
 12:00 3-1 *Christopher Kimball's Milk Street*
 12:30 3-1 *Simply Ming*
 1:00 3-1 *Mexico: One Plate at a Time*
 1:30 3-1 *Joanne Weir's Plates and Places*
 2:00 3-1 *Nature "Equus: Story of the Horse," Pt. 2*
 3:00 3-1 *Born to Explore with Richard Wies*
 3:30 3-1 *Museum Access*
 4:00 3-1 *Nova "Lost Viking Army"*
 5:00 3-1 *Americas Now*
 5:30 3-1 *Nightly Business Report*
 6:00 3-1 *PBS NewsHour*
 7:00 3-2 **Frontline** "Supreme Revenge"
 3-1 *ITO Sisters: An American Story*
 8:00 3-2 **Song of the Mountains** "Eugene Wolf & Mitya Kuznetsov/Jimbo"
 3-1 *Red Green Show*
 8:30 3-1 *You Should Know*
 9:00 3-2 **Today's Wild West**
"Chief Joseph Trail Ride"
 3-1 *Creative Living*
 3-3 *Breakthrough: Ideas that Changed the World "The Robot"*
 9:30 3-2 **Red Green Show** "New Yorkshire Puddings"
 3-1 *Home Diagnosis*
 10:00 3-2 **Woodsongs** "Tyminski and Drew Holcomb"
 3-1 *Amanpour and Company*
 3-3 *Nature "Equus," Pt. 2*
 11:00 3-2 **Amanpour and Company**
 3-1 *PBS NewsHour*
 3-3 *Nova "Lost Viking Army"*

12:00 3-2 **PBS NewsHour**
 3-1 *Masterpiece "Downton Abbey 3," Pt. 4*
 3-3 *Growing Boulder*

Friday 24th

5:00 3-1 *Classical Stretch*
 5:30 3-1 *Wai Lana Yoga*
 6:00 3-1 *America's Heartland*
 6:30 3-1 *Garden Smart*
 7:00 3-1 *Song of the Mountains*
 8:00 3-1 *Bluegrass Underground*
 8:30 3-1 *Songs at the Center*
 9:00 3-1 *Wild Nevada*
 9:30 3-1 *Today's Wild West*
 10:00 3-1 *Joy of Painting*
 10:30 3-1 *Beauty of Oil Painting*
 11:00 3-1 *Classical Stretch*
 11:30 3-1 *Sit and Be Fit*
 12:00 3-1 *This Old House Hour*
 1:00 3-1 *Make It Artsy*
 1:30 3-1 *Welcome to My Studio*
 2:00 3-1 *Growing Bolder*
 2:30 3-1 *Weekends with Yankee*
 3:00 3-1 *Journeys in Japan*
 3:30 3-1 *Dining with the Chef*
 4:00 3-1 *In Good Shape: The Health Show*
 4:30 3-1 *Gzero World with Ian Bremmer*
 5:00 3-1 *Great Decisions in Foreign Policy*
 5:30 3-1 *Nightly Business Report*
 6:00 3-1 *PBS NewsHour*
 7:00 3-2 **Market to Market**
 3-1 *Washington Week*
 7:30 3-2 **Consuelo Mack Wealthtrack**
 3-1 *Firing Line with Margaret Hoover*
 8:00 3-2 **Washington Week**
 3-1 *Nova "Lost Viking Army"*
 8:30 3-2 **Firing Line with Margaret Hoover**
 9:00 3-2 **Live From Lincoln Center**
"Megan Hilty in Concert"
 3-1 *Frontline "Supreme Revenge"*
 3-3 *This Old House Hour*
 10:00 3-2 **Masterpiece** "Les Miserables," Pt. 6
 3-1 *Amanpour and Company*
 3-3 *Woodwright's Shop*
 10:30 3-3 *Craftsman's Legacy*
 11:00 3-1 *PBS NewsHour*
 3-3 *American Woodshop*
 11:30 3-2 **Walkin' California** "Catalina Island"
 3-3 *Joy of Painting*
 12:00 3-2 **PBS NewsHour**
 3-1 *Music Voyager*
 3-3 *Start Up*

Saturday 25th

6:00 3-2 **Classic Woodworking**
"Shaker Blaney Chest"
 6:30 3-2 **Woodsmith Shop** "Small Project Assembly"
 7:00 3-2 **Kevin Belton's New Orleans Kitchen** "The Po-Boy Sandwich"
 7:30 3-2 **America's Test Kitchen**
 8:00 3-2 **Martha Bakes** "Lemons"
 8:30 3-2 **Great British Baking** "Biscuits"
 9:30 3-2 **Motorweek**
 10:00 3-2 **P. Allen Smith's Garden Home**
"Deck the Halls"
 10:30 3-2 **J. Schwanke's Life in Bloom**
 11:00 3-2 **Paint This with Jerry Yarnell**
"In the Shadow with Giants," Pt. 4
 3-1 *Steven Raichlen's Project Smoke*
 11:30 3-2 **Joy of Painting** "Majestic Peaks"
 3-1 *Ask This Old House*
 12:00 3-2 **Beauty of Oil Painting** "Out on a Limb"
 3-1 *This Old House*
 12:30 3-2 **Quilt in a Day** "Army Star and Hope of Hartford"
 3-1 *This Old House*
 1:00 3-2 **Quilting Arts** "The Embellished Stitch"
 3-1 *Ask This Old House*
 1:30 3-2 **Fons & Porter's Love of Quilting**
"Red Between the Lines," Pt. 1
 3-1 *Motorweek*

2:00 3-2 **Creative Living**
 3-1 *Woodwright's Shop*
 2:30 3-2 **Jazzy Vegetarian** "Vegan Drive-In"
 3-1 *Chef's Life*
 3:00 3-2 **Knit and Crochet Now**
"Stylish Shawls"
 3-1 *Martha Stewart's Cooking School*
 3:30 3-2 **This Old House**
 3-1 *Martha Bakes*
 4:00 3-2 **Ask This Old**
 3-1 *Nature "Equus: Story of the Horse," Pt. 2*
 4:30 3-2 **Welcome to My Studio**
"Neutral Red"
 5:00 3-2 **Sewing with Nancy** "Stress-Free Quilting with Machine Embroidery"
 3-1 *PBS NewsHour Weekend*
 5:30 3-2 **It's Sew Easy** "Fashion Versatility"
 3-1 *Report from Santa Fe*
 6:00 3-2 **Report from Santa Fe**
 3-1 *Antiques Roadshow*
 6:30 3-2 **America's Heartland**
 7:00 3-2 **Lawrence Welk Show** "Salute to the Armed Forces (1968)"
 3-1 *Live From Lincoln Center "Megan Hilty"*
 8:00 3-2 **Travel Detective** "Hidden Gems of Baja California Sur"
 3-1 *Wendell Castle: A Portrait*
 8:30 3-2 **Red Green Show** "No Tell Boater"
 9:00 3-2 **Austin City Limits** "Chris Stapleton/Turnpike Troubadour"
 3-1 *Tsuruko's Tea Journey*
 3-3 *Lawrence Welk Show*
 10:00 3-2 **Nova** "Lost Viking Army"
 3-1 *Austin City Limits*
 3-3 *Classic Gospel*
 11:00 3-2 **Nature** "Equus: Story of the Horse," Pt. 2
 3-1 *Nova "Lost Viking Army"*
 3-3 *Bluegrass Underground*
 11:30 3-3 *Sun Studio Sessions*
 12:00 3-2 **Austin City Limits** "Chris Stapleton/Turnpike Troubadour"
 3-1 *Nature "Equus: Story of the Horse," Pt. 2*
 3-3 *Song of the Mountains*

Sunday 26th

6:00 3-2 **Painting and Travel**
"Todd's General Store"
 6:30 3-2 **Second Opinion** "Foodborne Illness"
 7:00 3-2 **Antiques Roadshow** "Churchill Downs Racetrack," Pt. 3
 8:00 3-2 **Classic Gospel** "The Best of the Booth Brothers"
 9:00 3-2 **Joy of Music** "In Tribute to those who Served"
 9:30 3-2 **Music and the Spoken Word**
 10:00 3-2 **Breakthrough: Ideas that Changed the World** "The Airplane," Pt. 2
 11:00 3-2 **Great Museums: The Art of Islam at the Met and the Louvre**
 11:00 3-1 *Washington Week*
 11:30 3-1 *To the Contrary with Bonnie Erbe*
 12:00 3-2 **Cultura**
 3-1 *Firing Line with Margaret Hoover*
 12:30 3-2 **In Focus**
 3-1 *Start Up*
 1:00 3-1 *Consuelo Mack Wealthtrack*
 1:30 3-2 **Closer to Truth** "New Visions of the Mind?"
 3-1 *Market to Market*
 2:00 3-2 **Masterpiece** "Downton Abbey 2," Pt. 6
 3-1 *P. Allen Smith's Garden Home*
 2:30 3-1 *J. Schwanke's Life in Bloom*
 3:00 3-1 *Great British Baking Show*
 4:00 3-2 **Classic Gospel** "The Best of the Booth Brothers"
 3-1 *Nova "Lost Viking Army"*
 5:00 3-2 **Start Up** "Mobility Designed/Kansas, MO"
 3-1 *PBS Newshour Weekend*
 5:30 3-2 **Travel Detective** "Hidden Gems of Mazatlán"
 3-1 *Gzero World with Ian Bremmer*

6:00 3-2 Awakening in Taos: The Mabel Dodge Luhan Story
 3-1 *National Memorial Day Concert*
7:00 3-2 National Memorial Day Concert
 7:30 3-1 *Scramble the Seawolves*
8:30 3-2 National Memorial Day Concert
 9:00 3-1 *Independent Lens "Wrestle"*
 3-3 *Daytripper*
 9:30 3-3 *America's Heartland*
10:00 3-2 American Experience
 "Annie Oakley"
 3-3 *This Old House*
 10:30 3-1 *Bluegrass Underground*
 3-3 *Ask This Old House*
11:00 3-2 Safe Enough? (seatbelts in school buses)
 3-1 *Professor T*
 3-3 *Motorweek*
 11:30 3-3 *Legends of Airpower*
12:00 3-2 Nova "Lost Viking Army"
 3-1 *National Memorial Day Concert*
 3-3 *Nature "Equus: Story of the Horse"*

Monday 27th

5:00 3-1 *Classical Stretch*
 5:30 3-1 *Wai Lana Yoga*
 6:00 3-1 *Nature "Equus: Story of the Horse," Pt. 2*
 7:00 3-1 *In the Americas with David Yetman*
 7:30 3-1 *Joseph Rosendo's Travelscope*
 8:00 3-1 *Rick Steve's Europe*
 8:30 3-1 *Nick Stellino: Storyteller in the Kitchen*
 9:00 3-1 *Pati's Mexican Table*
 9:30 3-1 *Kevin Belton's New Orleans Kitchen*
 10:00 3-1 *P. Allen Smith's Garden Home*
 10:30 3-1 *Jazzy Vegetarian*
 11:00 3-1 *Classical Stretch*
 11:30 3-1 *Sit and Be Fit*
 12:00 3-1 *Great British Baking Show*
 1:00 3-1 *National Memorial Day Concert*
 2:30 3-1 *On Story*
 3:00 3-1 *Roadtrip Nation*
 3:30 3-1 *Urban Conversion*
 4:00 3-1 *America's Heartland*
 4:30 3-1 *Daytripper*
 5:00 3-1 *Scully/The World Show*
 5:30 3-1 *Nightly Business Report*
 6:00 3-1 *PBS NewsHour*
7:00 3-2 Antiques Roadshow "Biloxi, MS,"
 3-1 *D-Day at Pointe-du-Hoc*
8:00 3-2 D-Day at Pointe-du-Hoc
 3-1 *Going to War*
9:00 3-2 Hitler's Holocaust Railways
 3-1 *Antiques Roadshow*
 3-3 *Great British Baking Show*
10:00 3-2 PBS Previews: Chasing the Moon
 3-1 *Amanpour and Company*
 3-3 *National Memorial Day Concert*
10:30 3-2 Taste of History "German Born, American Made"
11:00 3-2 Antiques Roadshow "Churchill Downs Racetrack," Pt. 3
 3-1 *PBS NewsHour*
 11:30 3-3 *Scramble the Seawolves*
12:00 3-2 PBS NewsHour
 3-1 *Going to War*

Tuesday 28th

5:00 3-1 *Classical Stretch*
 5:30 3-1 *Wai Lana Yoga*
 6:00 3-1 *Antiques Roadshow*
 7:00 3-1 *Voyage of Adventure: Retracing Donelson's Journey*
 8:00 3-1 *Medical Frontiers*
 9:00 3-1 *Innovations in Medicine*
 9:30 3-1 *Second Opinion*
 10:00 3-1 *Closer to Truth*
 10:30 3-1 *Stories of the Mind*
 11:00 3-1 *Classical Stretch*
 11:30 3-1 *Wai Lana Yoga*
 12:00 3-1 *Around the Farm Table*
 12:30 3-1 *Taste of History*
 1:00 3-1 *D-Day at Pointe-du-Hoc*

2:00 3-1 *Voyage of Adventure: Retracing Donelson's Journey*
 3:00 3-1 *Antiques Roadshow*
 4:00 3-1 *Consuelo Mack Wealthtrack*
 4:30 3-1 *Start Up*
 5:00 3-1 *Firing Line with Margaret Hoover*
 5:30 3-1 *Nightly Business Report*
 6:00 3-1 *PBS NewsHour*
7:00 3-2 American Experience
 "Rachel Carson"
 3-1 *Reel South*
 8:00 3-1 *People's Protectors*
9:00 3-2 You Should Know
 3-1 *Pacific Heartbeat*
 3-3 *Antiques Roadshow*
9:30 3-2 Creative Living
10:00 3-2 Frontline "Sex Trafficking in America"
 3-1 *Amanpour and Company*
 3-3 *History Detectives*
11:00 3-2 Amanpour and Company
 3-1 *PBS NewsHour*
 3-3 *Voyage of Adventure: Retracing Donelson's Journey*
12:00 3-2 PBS NewsHour
 3-1 *Frontline "Sex Trafficking in America"*
 3-3 *America's Heartland*

Wednesday 29th

5:00 3-1 *Classical Stretch*
 5:30 3-1 *Wai Lana Yoga*
 6:00 3-1 *Consuelo Mack Wealthtrack*
 6:30 3-1 *Scully/The World Show*
 7:00 3-1 *Travelogue China*
 7:30 3-1 *Expeditions with Patrick McMillan*
 8:00 3-1 *Kimono Revolution*
 9:00 3-1 *Craftsman's Legacy*
 9:30 3-1 *Woodwright's Shop*
 10:00 3-1 *American Woodshop*
 10:30 3-1 *Woodsmith Shop*
 11:00 3-1 *Classical Stretch*
 11:30 3-1 *Sit and Be Fit*
 12:00 3-1 *Sara's Weeknight Meals*
 12:30 3-1 *Cook's Country*
 1:00 3-1 *Masterpiece "Downton Abbey 3," Pt. 5*
 2:00 3-1 *When the World Answered*
 2:30 3-1 *Rick Steves' Europe*
 3:00 3-1 *Islands Without Cars*
 3:30 3-1 *How to Cook Well*
 4:00 3-1 *Lidia's Kitchen*
 4:30 3-1 *America's Test Kitchen*
 5:00 3-1 *Story in the Public Square*
 5:30 3-1 *Nightly Business Report*
 6:00 3-1 *PBS NewsHour*
7:00 3-2 Nature "Soul of the Elephant"
 3-1 *American Experience*
 "Rachel Carson"
8:00 3-2 Nova "Inside Einstein's Mind"
9:00 3-2 Light Falls
 3-1 *Nature "Soul of the Elephant"*
 3-3 *Start Up*
 9:30 3-3 *Music Voyager*
 10:00 3-1 *Amanpour and Company*
 3-3 *Masterpiece "Downton Abbey 3," Pt. 5*
10:30 3-2 This Old House
11:00 3-2 Amanpour and Company
 3-1 *PBS NewsHour*
 3-3 *When the World Answered*
 11:30 3-3 *Rick Steves' Europe "Romania"*
12:00 3-2 PBS NewsHour
 3-1 *Nova "Inside Einstein's Mind"*
 3-3 *D-Day at Pointe-du-Hoc*

Thursday 30th

5:00 3-1 *Classical Stretch*
 5:30 3-1 *Wai Lana Yoga*
 6:00 3-1 *IQ: Smartparent*
 6:30 3-1 *Travels with Darley*
 7:00 3-1 *Leah Chase-The Queen of Creole*
 8:00 3-1 *Antiques Roadshow*
 9:00 3-1 *Fons & Porter's Love of Quilting*
 9:30 3-1 *Quilt in a Day*
 10:00 3-1 *Knit and Crochet Now!*

10:30 3-1 *It's Sew Easy*
 11:00 3-1 *Classical Stretch*
 11:30 3-1 *Happy Yoga*
 12:00 3-1 *Christopher Kimball's Milk Street*
 12:30 3-1 *Simply Ming*
 1:00 3-1 *Mexico: One Plate at a Time*
 1:30 3-1 *Joanne Weir's Plates and Places*
 2:00 3-1 *Nature "Soul of the Elephant"*
 3:00 3-1 *Born to Explore with Richard Wies*
 3:30 3-1 *Museum Access*
 4:00 3-1 *Nova "Inside Einstein's Mind"*
 5:00 3-1 *Americas Now*
 5:30 3-1 *Nightly Business Report*
 6:00 3-1 *PBS NewsHour*
7:00 3-2 Frontline "Sex Trafficking in America"
 3-1 *Light Falls*
8:00 3-2 Song of the Mountains "Mac Puckett & The Good Company Band"
 8:30 3-1 *You Should Know*
9:00 3-2 Today's Wild West "U.S. Calvary School"
 3-1 *Creative Living*
 3-3 *Breakthrough: Ideas that Change the World "The Car"*
9:30 3-2 Red Green Show "Exit Stag Right"
 3-1 *Home Diagnosis*
10:00 3-2 Woodsongs
 "Sun Records Celebration"
 3-1 *Amanpour and Company*
 3-3 *Nature*
11:00 3-2 Amanpour and Company
 3-1 *PBS NewsHour*
 3-3 *Nova "Inside Einstein's Mind"*
12:00 3-2 PBS NewsHour
 3-1 *Masterpiece "Downton Abbey 3," Pt. 5*
 3-3 *Growing Bolder*

Friday 31st

5:00 3-1 *Classical Stretch*
 5:30 3-1 *Wai Lana Yoga*
 6:00 3-1 *America's Heartland*
 6:30 3-1 *Garden Smart*
 7:00 3-1 *Song of the Mountains*
 8:00 3-1 *Bluegrass Underground*
 8:30 3-1 *Songs at the Center*
 9:00 3-1 *Wild Nevada*
 9:30 3-1 *Today's Wild West*
 10:00 3-1 *Joy of Painting*
 10:30 3-1 *Beauty of Oil Painting*
 11:00 3-1 *Classical Stretch*
 11:30 3-1 *Sit and Be Fit*
 12:00 3-1 *This Old House Hour*
 1:00 3-1 *Make It Artsy*
 1:30 3-1 *Welcome to My Studio*
 2:00 3-1 *Growing Bolder*
 2:30 3-1 *Weekends with Yankee*
 3:00 3-1 *Journeys in Japan*
 3:30 3-1 *Dining with the Chef*
 4:00 3-1 *In Good Shape: The Health Show*
 4:30 3-1 *Gzero World with Ian Bremmer*
 5:00 3-1 *Great Decisions in Foreign Policy*
 5:30 3-1 *Nightly Business Report*
 6:00 3-1 *PBS NewsHour*
7:00 3-2 Market to Market
 3-1 *Washington Week*
7:30 3-2 Consuelo Mack Wealthtrack
 3-1 *Firing Line with Margaret Hoover*
8:00 3-2 Washington Week
 3-1 *Nova "Inside Einstein's Mind"*
8:30 3-2 Firing Line with Margaret Hoover
9:00 3-2 Great Performances at the Met
 "Adriana Lecouvreur"
 3-1 *Frontline "Sex Trafficking in America"*
 3-3 *This Old House Hour*
 10:00 3-1 *Monrovia, Indiana*
 3-3 *Woodwright's Shop*
 10:30 3-3 *Craftsman's Legacy*
 11:00 3-3 *American Woodshop*
11:30 3-2 Growing Old Gambling
 3-3 *Joy of Painting*
12:00 3-2 PBS NewsHour
 3-3 *Start Up*

KENW/KMTH-FM LOG

KENW-FM, Portales, NM, 89.5 MHz — KMTH-FM, Maljamar, NM, 98.7 MHz — KENM-FM, Tucumcari, NM, 88.9 MHz — KENU-FM, Des Moines, NM, 88.5 MHz — KENG-FM, Ruidoso, NM, 88.5 MHz — KENE-FM, Raton, NM, 88.1 MHz

Translators: Apache Springs, 90.9 MHz; Clayton, 93.5 MHz; Des Moines, 106.1 MHz; Ft. Sumner, 91.7 MHz; Las Vegas, 88.1 MHz; Roswell, 91.1 MHz; Wagon Mound, 92.1 MHz.

Sundays

8:00 a.m. WITH HEART AND VOICE

May 5 Happy Birthday!
May 12 Mother's Day
May 19 Spring
May 26 Ascension & Memorial Day

9:00 a.m. FOOTLIGHT PARADE

May 5 1965 on Stage and Screen
May 12 Least Likely to Succeed
May 19 2003 on Stage and Screen
May 26 Television Musicals, Part 1

10:00 a.m. RADIO LAB

May 5 Borderline Part 3 – What Remains
May 12 I Hart Kpop
May 19 Poison Control
May 26 Apologetical

11:00 a.m. FRESH AIR WEEKEND

12:00 p.m. PEOPLE'S PHARMACY

1:00 p.m. THIS AMERICAN LIFE

2:00 p.m. FREAKONOMICS

May 5 Where Do Good Ideas Come From?
May 12 A Good Idea is Not Good Enough
May 19 How to Fail Like a Pro
May 26 TBA

3:00 p.m. MOUNTAIN STAGE

May 5 Matt Nathanson; Stephen Kellogg; Carbon Leaf; Cashavelly Morrison; Pete Muller
May 12 With Guest Host Kathy Mattea – Tim O'Brien Band; The Po' Ramblin' Boys; Alison Brown Band; The Honey Dewdrops; Charles Wesley Godwin
May 19 With Guest Host Kathy Mattea – Darlingside; Greg Brown; Lula Wiles; Si Kahn and The Looping Brothers; Sean McConnel
May 26 With Guest Host Kathy Mattea – David Bromberg Quintet; The Devil Makes Three; The Suitcase Junket; Eliza Gilkyson; Jarlath Henderson

5:00 p.m. CELTIC CONNECTIONS

May 5 New Releases
May 12 Calhoun Sings Burns
May 19 Revisiting 2015
May 26 Band Showcase

6:00 p.m. ALL THINGS CONSIDERED

7:00 p.m. SAN FRANCISCO SYMPHONY

May 5 CAGE: The Seasons
R. HOLLOWAY: *Europa and the Bull*
BARTOK: Concerto for Orchestra
May 12 IVES: *From the Steeples and the Mountains; The Unanswered Question*
TILSON THOMAS: Four Preludes on *Playthings of the Wind*
HARRISON: Selections from Suite for Violin with American Gamelan
ANTHEIL: *A Jazz Symphony*

May 19 IVES: Psalm 90; Symphony No. 3, "The Camp Meeting"
DVORAK: The American Flag
GLASER: "O For a Thousand Tongues"
CONVERSE: "What a Friend"
MASON: "There is a Fountain"
AIR: "Happy Land"
NAGELLI: "Father, Whate'er Of Earthly Bliss"
BRADBURY: "Just As I Am"

May 26 MOZART: German Dances; Exultate, jubilate
MAHLER: Symphony No. 4 in G

9:00 p.m. THE ROMANTIC HOUR

May 5 Romance of the Villa d'Este
May 12 A Show to Celebrate Mother's Day
May 19 Songs of the Earth
May 26 Poetry of Alter Esselin

10:00 p.m. WEEKEND PERFORMANCE TODAY

11:00 p.m. MUSIC OUT OF THE NIGHT AND INTO THE MORNING until 5:00 a.m. when Morning Edition begins.

Mondays

7:00 p.m. CHICAGO SYMPHONY ORCHESTRA

May 6 MOZART: Overture to *Don Giovanni*; Symphony No. 40 in g
RIMSKY-KORSAKOV: *Scheherazade*
BEETHOVEN: Symphony No. 1 in C
May 13 DVORAK: *Husitska* Overture
SCHUMANN: Cello Concerto in a
HINDEMITH: Concert Music for Strings and Bass
MUSSORGSKY/RAVEL: *Pictures from an Exhibition*
CATALANI: *Contemplazione*

May 20 MOZART: *Ein kleine Nachtmusik*; Flute Concerto No. 2 in D; Violin Concerto No. 3 in G; Symphony No. 25 in g; Oboe Concerto in C
May 27 MOZART: Piano Concerto No. 22 in E-Flat
STRAUSS: *An Alpine Symphony*
WEBERN: *Im Sommerwind*

9:00 p.m. PERFORMANCE TODAY
11:00 p.m. MUSIC OUT OF THE NIGHT AND INTO THE MORNING until 5:00 a.m. when Morning Edition begins.

Tuesdays

7:00 p.m. NEW YORK PHILHARMONIC

May 7 BEETHOVEN: Piano Concerto No. 2
RACHMANINOFF: Symphony No. 2

May 14 MOZART: Symphony No. 1; Symphony No. 41, "Jupiter"
HAYDN: Piano Concerto No. 11
STRAVINSKY: Capriccio for Piano & Orchestra

May 21 BRAHMS: *A German Requiem*

May 28 MAHLER: Symphony No. 8

9:00 p.m. PERFORMANCE TODAY

11:00 p.m. MUSIC OUT OF THE NIGHT AND INTO THE MORNING until 5:00 a.m. when Morning Edition begins.

Wednesdays

7:00 p.m. LOS ANGELES PHILHARMONIC

May 1 PURCELL: Suite from the *Fairy Queen*

BACH: Suite No. 3 in D
PERGOLES: Stabat Mater

May 8 GLINKA: *Russlan und Ludmilla*: Overture
BERSTEIN: Serenade After Plato's Symposium
LEON: *Ser*

STRAVINSKY: Firebird Suite

May 15 CHEN YI GE ZU: *Antiphony*
TCHAIKOVSKY: Piano Concerto No. 1

PROKOFIEV: Symphony No. 6
May 22 STRAVINSKY: *Fireworks*
PEREIRA: *Threshold* for Solo Timpani, Two Percussion and Orchestra

BRAHMS: Symphony No. 1
May 29 RAVEL: *Le Tombeau de Couperin*
MUHLY: Organ Concerto
MUSSORGSKY (ARR. RAVEL): *Pictures at an Exhibition*

9:00 p.m. PERFORMANCE TODAY

11:00 p.m. MUSIC OUT OF THE NIGHT AND INTO THE MORNING until 5:00 a.m. when Morning Edition begins.

Thursdays

7:00 p.m. COLLECTORS' CORNER with HENRY FOGEL

May 2 DVORAK: Cello Concerto
SHOSTAKOVICH: Cello Sonata
SCHUMANN: Cello Concerto
TCHAIKOVSKY: *Rococo Variations*

May 9 BEETHOVEN: Piano Trio in B-Flat, "Archduke"; Cello Sonata No. 3 in A

CHOPIN: *Introduction & Polonaise brillante*

BRAHMS: Cello Sonata No. 1 in e

May 16 MOZART: *Idomeneo*: Overture
SAINT-SAENS: Piano Concerto No. 2
SCHUBERT: Symphony No. 9 in C, "Great"

Saturdays

May 23 Callas Live – Warner's
Remastering of Live Maria Callas
Recordings – Program 1

May 30 Callas Live – Warner's
Remastering of Live Maria Callas
Recordings – Program 2

9:00 p.m. PERFORMANCE TODAY

**11:00 p.m. MUSIC OUT OF THE NIGHT
AND INTO THE MORNING** until
5:00 a.m. when **Morning Edition**
begins.

Fridays

7:00 p.m. CONCIERTO

8:00 p.m. FIESTA! With ELBIO BARILARI

May 3 Leonardo Balada: Composer

May 10 Celebrating Camerata Punta del
Este

May 17 Flamenco Soundscapes

May 24 Back to Portugal

May 31 New Music from the Past

9:00 p.m. PERFORMANCE TODAY

**11:00 p.m. MUSIC OUT OF THE NIGHT
AND INTO THE MORNING** until
5:00 a.m. when **People's
Pharmacy** begins.

8:00 a.m. BEST OF CAR TALK

9:00 a.m. WAIT WAIT DON'T TELL ME

**10:00 a.m. THE BIONEERS: Revolution
from the Heart of Nature**

10:30 a.m. NEW LETTERS ON THE AIR

11:00 a.m. THE METROPOLITAN OPERA

May 4 BIZET: *Les Pecheurs De Perles*

May 11 POULENC: *Dialogues Des
Carmelites*

11:00 a.m. THE ROYAL OPERA

May 18 VERDI: *Falstaff*

May 25 WAGNER: *Das Rheingold*

3:00 p.m. CLASSICAL GUITAR ALIVE!

**4:00 p.m. LIVE FROM HERE WITH CHRIS
THILE**

May 4 St. Paul, MO with The War and
Treaty, Gabriel Kahane and Negin
Farsad

May 11 Lincoln, NE with Jeff Tweedy,
Diana Gordon and Todd Barry

May 18 Kansas City, MO with Mandolin
Orange, My Brightest Diamond
and Judy Gold

May 25 Live at Powell Symphony Hall,
St. Louis, MO, St. Louis
Symphony Orchestra

6:00 p.m. ALL THINGS CONSIDERED

7:00 p.m. SWINGIN' DOWN THE LANE

May 4 A Cryin' Shame

May 11 The Saints Go Marching In

May 18 Close Encounters 1

May 25 Jerome Kern Songbook 1

8:00 p.m. JAZZ NIGHT

9:00 p.m. JAZZ AT 100

May 4 Up in Harlem-The Bands

May 11 Up in Harlem-Stride

May 18 Louis Armstrong's Hot Fives and
Hot Sevens

May 25 Bix and the Boys

10:00 p.m. DREAMFARM RADIO

**11:00 p.m. MUSIC OUT OF THE NIGHT
AND INTO THE MORNING** until
6:00 a.m. when **Weekend
Edition** begins.



FM Radio Week-at-a-Glance

	Sunday	Monday	Tuesday	Wednesday	Thursday	Friday	Saturday	Monday through Friday			
5:00	Travel with Rick Steves	Morning Edition	Morning Edition	Morning Edition	Morning Edition	Morning Edition	5:00 a.m. People's Pharmacy	Regional News: 5:31, 6:31, and 7:31 a.m. Weather: 5:18, 6:18, and 7:18 a.m.			
6:00	Weekend Edition						6:00 a.m. Weekend Edition				
7:00											
8:00	With Heart and Voice	Music News & Features	Music News & Features	Music News & Features	Music News & Features	Music News & Features	8:00 a.m. Car Talk	8:01 Marketplace Report			
9:00	Footlight Parade						9:00 a.m. Wait, Wait... Don't Tell Me	8:15 Kindness Minute			
10:00	Radiolab						10:00 a.m. Bioneers	8:20 Nature Notes (Tu)			
11:00	Fresh Air Weekend with Terry Gross						10:30 a.m. New Letters	Travelers in the Night (W)			
12:00	People's Pharmacy (R)						11:00 a.m. Opera	8:30 Health in a Heartbeat			
1:00	This American Life							8:45 Insight			
2:00	Freakonomics										
3:00	Mountain Stage	Here & There with David Marash	Best of Knowledge	51 Percent	With Good Reason	Says You!	3:00 p.m. Classical Guitar	9:00 Weather/News			
3:30		Marketplace					Marketplace	Marketplace	Marketplace	4:00 p.m.	9:05 New Mexico Close Up
4:00											9:15 Marketplace Tech Report
4:30	Celtic Connections	All Things Considered	All Things Considered	All Things Considered	All Things Considered	All Things Considered	Live from Here	9:20 A Southwest Spotlight (F)			
5:00								9:30 Disability Awareness			
6:00	All Things Considered	PBS NewsHour	PBS NewsHour	PBS NewsHour	PBS NewsHour	PBS NewsHour	All Things Considered	9:45 Fitness Minute			
7:00	San Francisco Symphony	Chicago Symphony Orchestra	New York Philharmonic	Los Angeles Philharmonic	Collectors' Corner	Concierto with Frank Dominguez	Swingin' Down the Lane	10:00 Weather/News/Regional News			
8:00						Fiesta! with Elbio Barilari	Jazz Night in America	10:15 Engines of Our Ingenuity			
9:00	The Romantic Hours	Performance Today	Performance Today	Performance Today	Performance Today	Performance Today	Jazz at 100	10:30 Composers' Datebook			
10:00	Performance Today						DreamFarm Radio	10:45 News Feature			
11:00	Classical Music Out of the Night until 5:00 a.m.	Classical Music Out of the Night until 5:00 a.m.	Classical Music Out of the Night until 5:00 a.m.	Classical Music Out of the Night until 5:00 a.m.	Classical Music Out of the Night until 5:00 a.m.	Classical Music Out of the Night until 5:00 a.m. when People's Pharmacy begins.	Classical Music Out of the Night until 5:00 a.m. when Travel with Rick Steves	11:00 Weather/News			
								11:30 Pulse of the Planet			
								11:45 Climate Connections / Current Cast			
								12:00 Weather/News/Regional News			
								12:15 Community Calendar			
								12:30 Moment in Time			
								12:35 Great Arts at Eastern (Th)			
								12:45 People's Pharmacy News (M)			
								Poetry Now (T)			
								A Touch on Nature (W)			
								Medical Discoveries News (Th)			
								Science and the Sea (F)			
								1:00 Weather/News			
								1:15 Sound Beat			
								1:30 Loh Down on Science			
								1:45 StarDate			
								2:00 Weather/News/Regional News			
								2:15 Bird Note			
								2:20 A Southwest Spotlight (W)			
								2:30 American Storyteller			
								2:45 90 Second Naturalist			
								3:00 Weather/News			
								3:06 Innovation Now/Fitness Minute			
								3:15 The Plant Detective			
								4:50 & 5:50 p.m. Weather			
								5:20 New Mexico Close-up			
								5:30 Regional News			
								6:57 StarDate/Weather			
								9:00 Weather/News			
								12:00/3:00 a.m. Weather/News			

u BUSINESS FRIENDS u

 <p>Taylor Water Well Service Water Well Drilling Pump Sales & Service</p> <p>Glenn Taylor Carlsbad, NM <i>Live from Here, FM</i> <i>Wait, Wait...Don't Tell Me, FM</i> <i>Radio Lab, FM</i></p>	 <p>Las Vegas, NM <i>Insight</i> <i>Weekend Programming, FM</i></p>	 <p>Roswell, NM <i>Nature,</i> <i>Nightly Business Report,</i> <i>Star Gazers</i></p>	 <p>CJ's <i>Pharmacy... At your Service</i> Portales, NM <i>Fitness Minute,</i> <i>Classical Guitar Alive, FM</i> <i>Mt. Stage, FM</i></p>	 <p>Roosevelt County Electric Cooperative Portales, NM <i>Antiques Roadshow</i></p>	 <p>Clovis, Portales, NM <i>Austin City Limits</i></p>
 <p>Portales, NM <i>Nova</i></p>	 <p>Clovis Community College Cultural Art Series <i>Primetime Programming, TV</i></p>	 <p>Roswell, NM <i>Classic Gospel</i></p>	 <p>Clovis, Eunice, Hagerman, Hobbs, Portales, Roswell <i>Austin City Limits</i></p>	 <p><i>Evening News/Public Affairs</i> <i>BBC World News</i> <i>News 3 New Mexico</i></p>	 <p>Roswell, NM <i>Morning Edition, FM</i> <i>Jazz Programming, FM</i></p>
<p>This space could be yours! For Underwriting opportunities, please call toll-free (888) 367-5369. Ask for Rena for TV, Amie for FM</p>	 <p><i>Evening News/Public Affairs</i> <i>Programming</i> <i>News 3 New Mexico</i></p>	 <p>Portales, NM <i>Austin City Limits</i></p>	 <p>Farmers' Electric Cooperative, Inc. of New Mexico Clovis, NM <i>Ask This Old House</i></p>	 <p>Las Cruces, NM <i>America's Heartland</i></p>	 <p>Roswell, NM <i>Piano Jazz, FM</i> <i>Jazz Programming, FM</i></p>
 <p>Clovis and Portales <i>Wait, Wait...Don't Tell Me, FM</i></p>	 <p>Ruidoso, NM <i>Morning Edition, FM</i></p>	 <p>Farwell, TX <i>Antiques Roadshow</i></p>	 <p><i>Open Every Day Except Christmas</i> Carlsbad, NM <i>Austin City Limits,</i> <i>Nature, PBS NewsHour</i></p>	 <p>Portales, NM <i>Pharmacy... At your Service</i> <i>Antiques Roadshow,</i> <i>Health related programs,</i> <i>Report from Santa Fe,</i> <i>Sportslook</i></p>	<p>This space could be yours! For Underwriting opportunities, please call toll-free (888) 367-5369. Ask for Rena for TV, Amie for FM</p>
<p>Paul and Elise Schmidt</p> <p><i>PBS NewsHour</i> <i>Washington Week</i></p>	 <p>Clovis, NM <i>P. Allen Smith's Garden to Table</i></p>	 <p>Las Vegas, NM <i>Dateline NM, FM</i> <i>Weekend Programming, FM</i></p>	 <p>Attorneys at Law Roswell, NM <i>Evening Symphony, FM</i> <i>All Things Considered, FM</i></p>	 <p>Dexter and Roswell, NM <i>America's Heartland</i></p>	 <p>Roswell, NM <i>American Experience,</i> <i>Masterpiece,</i> <i>Nova, PBS NewsHour</i></p>

When to watch from A to Z

Channel 3-1 – May 2019

Amanpour and Company – Mondays-Fridays, 10:00 p.m. (except 31st)
American Woodshop – Wednesdays, 10:00 a.m.
Americas Now – Thursdays, 5:00 p.m. (begins 9th)
America's Heartland – Mondays, 4:00 p.m.; Fridays, 6:00 a.m.
America's Test Kitchen – Wednesdays, 4:30 p.m.
Antiques Roadshow – Mondays, 9:00 p.m.;
 Tuesdays, 6:00 a.m./3:00 p.m.; Thursdays, 8:00 a.m.;
 Saturdays, 6:00 p.m.
Around the Farm Table – Tuesdays, 12:00 noon
Ask This Old House – Saturdays, 11:30 a.m./1:00 p.m.
Austin City Limits – Saturdays, 10:00 p.m.
Beauty of Oil Painting – Fridays, 10:30 a.m.
Bluegrass Underground – Fridays, 8:00 a.m.;
 Sundays, 10:30 p.m. (except 5th)
Born to Explore with Richard Wiese – Thursdays, 3:00 p.m.
Call the Midwife – Sundays, 6:00 p.m. (ends 19th)
Chef's Life – Saturdays, 2:30 p.m.
Christopher Kimball's Milk Street TV – Thursdays, 12:00 noon
Classical Stretch – Mondays-Fridays, 5:00 a.m./11:00 a.m.
Closer to Truth – Tuesdays, 10:00 a.m.
Consuelo Mack Wealthtrack – Sundays, 1:00 p.m.;
 Tuesdays, 4:00 p.m.; Wednesdays, 6:00 a.m.
Cook's Country – Wednesdays, 12:30 p.m.
Craftsman's Legacy – Wednesdays, 9:00 a.m.
Creative Living – Thursdays, 9:00 p.m.
David Holt's State of Music – Fridays, 8:30 a.m. (ends 17th)
Daytripper – Mondays, 4:30 p.m.
Destination Craft – Wednesdays, 7:30 a.m. (ends 15th)
Dining with the Chef – Fridays, 3:30 p.m.
Expeditions with Patrick McMillan –
 Wednesdays, 7:30 a.m. (begins 22nd)
Finding Your Roots – Tuesday, 7th, 8:00 p.m.; Thursday, 9th, 7:00 a.m.
Firing Line with Margaret Hoover – Fridays, 7:30 p.m.;
 Sundays, 12:00 noon; Tuesdays, 5:00 p.m.

Fons & Porter's Love of Quilting – Thursdays, 9:00 a.m.
Frontline – Fridays, 9:00 p.m.
 "The Mueller Investigation" – 3rd
 "Trump's Trade War" – 10th
 "One Day in Gaza" – 17th
 "Supreme Revenge" – 24th
 "Sex Trafficking in America" – 31st
Garden Smart – Fridays, 6:30 a.m.
Great British Baking Show – Sundays, 3:00 p.m. (except 12th);
 Mondays, 12:00 noon
Great Decisions in Foreign Policy – Fridays, 5 p.m. (begins 10th)
Growing Bolder – Fridays, 2:00 p.m.
Gzero World – Fridays, 4:30 p.m.; Sundays, 5:30 p.m.
Happy Yoga – Thursdays, 11:30 a.m.
Home Diagnosis – Thursdays, 9:30 p.m. (begins 16th)
How to Cook Well with Rory O'Connell – Wednesdays, 3:30 p.m.
In Good Shape – The Health Show – Fridays, 4:00 p.m.
In The Americas with David Yetman – Mondays, 7:00 a.m.
Innovations in Medicine – Tuesdays, 9:00 a.m.
IQ: Smartparent – Thursdays, 6:00 a.m.
Islands Without Cars – Wednesdays, 3:00 p.m.
It's Sew Easy – Thursdays, 10:30 a.m.
J Schwanke's Life in Bloom – Sundays, 2:30 p.m. (except 12th)
Jazzy Vegetarian – Mondays, 10:30 a.m.
Joanne Weir's Plates and Places – Thursdays, 1:30 p.m.
Joseph Rosendo's Travelscope – Mondays, 7:30 a.m.
Journeys in Japan – Fridays, 3:00 p.m.
Joy of Painting – Fridays, 10:00 a.m.
Kevin Belton's New Orleans Kitchen – Mondays, 9:30 a.m.
Knit and Crochet Now – Thursdays, 10:00 a.m.
Lidia's Kitchen – Wednesdays, 4:00 p.m.
Make It Artsy – Fridays, 1:00 p.m.
Market to Market – Sundays, 1:30 p.m.
Martha Bakes – Saturdays, 3:30 p.m.



Channel 3-1 Programs continued

Martha Stewart's Cooking School – Saturdays, 3:00 p.m.
Mexico – Once Plate at a Time – Thursdays, 1:00 p.m.
Masterpiece –
 "Downton Abbey" – Wednesdays, 1:00 p.m.
 "Les Miserables" – Sundays, 7:00 p.m. (ends 19th);
 Mondays, 1:00 p.m. (ends 20th)
 "Unforgotten" – Sundays, 8:00 p.m. (ends 12th);
 Mondays, 2:00 p.m. (ends 13th)
Motorweek – Saturdays, 1:30 p.m.
Museum Access – Thursdays, 3:30 p.m.
My Greek Table – Mondays, 8:30 a.m. (ends 13th)
Nature – Wednesdays, 9:00 p.m.; Thursdays, 2:00 p.m.;
 Saturdays, 4:00 p.m.; Mondays, 6:00 a.m.
News 3 New Mexico – Thursdays and Fridays, 5:00 p.m.
 (ends 3rd, returns in fall)
Nick Stellino: Storyteller in the Kitchen –
 Mondays, 8:30 a.m. (begins 20th)
Nightly Business Report – Mondays – Fridays, 5:30 p.m.
Nova – Thursdays, 4:00 p.m.; Fridays, 8:00 p.m.;
 Saturdays, 11:00 p.m.; Sundays, 4:00 p.m. (except 12th)
On Story – Mondays, 2:30 p.m. (begins 20th)
P. Allen Smith's Garden Home – Sundays, 2:00 p.m. (except 12th);
 Mondays, 10:00 a.m.
Pacific Heartbeat – Tuesdays, 9:00 p.m.
Pati's Mexican Table – Mondays, 9:00 a.m.
PBS Newshour – Mondays – Fridays, 6:00 p.m./11:00 p.m.
 (no 11:00 p.m. play on 31st)
PBS Newshour Weekend – Saturdays and Sundays, 5:00 p.m.
Professor T – Sundays, 11:00 p.m.
Quilt in A Day – Thursdays, 9:30 a.m.
Red Green Show – Thursdays, 8:00 p.m.
Reel South – Tuesdays, 7:00 p.m.
Report from Santa Fe – Saturdays, 5:30 p.m.
Rick Steves' Europe – Mondays, 8:00 a.m.;
 Wednesdays, 2:30 p.m. (except 1st)
Roadtrip Nation – Mondays, 3:00 p.m.
Sara's Weeknight Meals – Wednesdays, 12:00 noon
Scully/The World Show – Mondays, 5:00 p.m.;
 Wednesdays, 6:30 a.m.
Second Opinion – Tuesdays, 9:30 a.m.
Simply Ming – Thursdays, 12:30 p.m.
Sit and Be Fit – Mondays/Wednesdays/Fridays, 11:30 a.m.
Song of the Mountains – Fridays, 7:00 a.m.
Songs at the Center – Fridays, 8:30 a.m. (begins 24th)
Speakeasy – Saturdays, 9:00 p.m. (ends 18th)
Sportslook – Thursdays, 9:30 p.m. (ends 9th; returns in fall)
Start Up – Tuesdays, 4:30 p.m.; Sundays, 12:30 p.m.
Steven Raichlen's Project Smoke – Saturdays, 11:00 a.m.
Stories of the Mind – Tuesdays, 10:30 a.m.
Story in the Public Square – Wednesdays, 5:00 p.m.
Taste of History – Tuesdays, 12:30 p.m.
This Old House – Saturdays, 12:00 noon/12:30 p.m.
This Old House Hour – Fridays, 12:00 noon
To The Contrary – Sundays, 11:30 a.m.
Today's Wild West – Fridays, 9:30 a.m.
Travelogue China – Wednesdays, 7:00 a.m.
Travels with Darley – Thursdays, 6:30 a.m.
Ultimate Restorations – Tuesdays, 2:00 p.m. (ends 21st)
Urban Conversion – Mondays, 3:30 p.m. (begins 13th)
Wai Lana Yoga – Mondays–Fridays, 5:30 a.m.;
 Tuesdays, 11:30 a.m.
Washington Week – Fridays, 7:00 p.m.; Sundays, 11:00 a.m.
Weekends with Yankee – Fridays, 2:30 p.m.
Welcome to My Studio – Fridays, 1:30 p.m.
Wild Nevada – Fridays, 9:00 a.m.
Woodsmith Shop – Wednesdays, 10:30 a.m.
Woodwright's Shop – Saturdays, 2:00 p.m.; Wednesdays, 9:30 a.m.
You Are Cordially Invited (2 Pts.) –
 Wednesdays, 2:00 p.m. (8th and 15th only)
You Should Know – Thursdays, 8:30 p.m.

May 3-1 Specials

10 Modern Marvels that Changed America – Tuesday, 14th, 8:00 p.m.;
 Thursday, 16th, 7:00 a.m.
10 Streets that Changed America – Thursday, 23rd, 7:00 a.m.
American Experience –
 "Amelia Earhart" – Wednesday, 8th, 7:00 p.m.
 "Annie Oakley" – Wednesday, 15th, 7:00 p.m.
 "Emma Goldman" – Wednesday, 22nd, 7:00 p.m.
 "Rachel Carson" – Wednesday, 29th, 7:00 p.m.
And Then They Came for Us – Monday, 20th, 8:00 p.m.;
 Tuesday, 21st, 7:00 a.m.
Awakening in Taos: The Mabel Dodge Luhan Story –
 Thursday, 16th, 7:00 p.m.; Tuesday, 21st, 8:00 p.m.
Bad Deal – My Vietnam War Story – Sunday, 19th, 8:30 p.m.
Blackbird: Legacy of Innovation – Monday, 13th, 8:00 p.m.;
 Tuesday, 14th, 7:00 a.m.
Breakthrough: The Ideas That Changed the World –
 Wednesdays, 8:00 p.m. (ends 22nd)
Call to Remember – Monday, 6th, 8:30 p.m.
Crazy – Tuesday, 7th, 8:00 a.m.
CyberWorks and the American Dream – Wednesday, 8th, 8:00 a.m.
D-Day at Pointe-du-Hoc – Monday, 27th, 7:00 p.m.;
 Tuesday, 28th, 1:00 p.m.
Dialogue in Metal – Thursday, 9th, 7:00 p.m.; Wednesday, 15th, 8:00 a.m.
**Emilio and Gloria Estefan: Library of Congress Gershwin Prize for
 Popular Song** – Saturday, 4th, 7:00 p.m.
Eva: A-7063 – Monday, 6th, 7:00 p.m.
Five Dreamers – Tuesday, 7th, 7:30 p.m.
Going to War – Monday, 27th, 8:00 p.m.
Great Museums: The Art of Islam at the Met and the Louvre –
 Saturday, 18th, 8:00 p.m.; Wednesday, 22nd, 8:00 a.m.
Great Performances at the Met "Adriana Lecouvreur" –
 Sunday, 12th, 2:00 p.m.
Hitler's Holocaust Railways – Wednesday, 1st, 7:00 p.m.
Independent Lens –
 "Out of State" – Sunday, 12th, 9:00 p.m.
 "Harvest Season" – Sunday, 19th, 9:00 p.m.
 "Wrestle" – Sunday, 26th, 9:00 p.m.
Invisible Women: Forgotten Artists of Florence –
 Wednesday, 22nd, 2:00 p.m.
Ito Sisters: An American Story – Thursday, 23rd, 7:00 p.m.
Journey of the Whooping Crane – Tuesday, 7th, 7:00 a.m.
Kimono Revolution – Wednesday, 29th, 8:00 a.m.
Korea: The Never-Ending War – Sunday, 5th, 9:00 p.m.
Leah Chase: Queen of Creole Cuisine – Thursday, 30th, 7:00 a.m.
Leaning Out – Wednesday, 1st, 8:00 a.m.
Light Falls – Thursday, 30th, 7:00 p.m.
Live from Lincoln Center –
 "Cynthia Erivo in Concert" – Saturday, 11th, 7:00 p.m.
 "Annaleigh Ashford in Concert" – Saturday, 18th, 7:00 p.m.
 "Megan Hilty in Concert" – Saturday, 25th, 7:00 p.m.
Masters of Rhythm: Afro-Peruvian Way – Saturday, 4th, 8:30 p.m.
Medical Frontiers – Tuesday, 28th, 8:00 a.m.
Merle Travis: Guitar Man – Thursday, 2nd, 8:00 a.m.
Monrovia, Indiana – Friday, 31st, 10:00 p.m.
National Memorial Day Concert – Sunday, 26th, 6:00 p.m.;
 Monday, 27th, 1:00 p.m.
Norman Mineta and His Legacy: An American Story –
 Monday, 20th, 7:00 p.m.; Tuesday, 21st, 1:00 p.m.
People's Protectors – Tuesday, 28th, 8:00 p.m.
Poland: The Royal Tour – Thursday, 2nd, 7:00 a.m.
Revolutionizing Dementia Care – Tuesday, 21st, 8:00 a.m.
Rudy and Neal Go Fishing – Sunday, 12th, 10:00 p.m.;
 Tuesday, 14th, 7:30 p.m.
Safe Enough? (seatbelts on school buses) – Tuesday, 14th, 8:00 a.m.
Scramble the Seawolves – Sunday, 26th, 7:30 p.m.
Search for the Mona Lisa – Thursday, 2nd, 7:00 p.m.;
 Tuesday, 7th, 1:00 p.m.; Saturday, 11th, 8:00 p.m.
Secret Weapon That Won World War II – Monday, 13th, 7:00 p.m.;
 Tuesday, 14th, 1:00 p.m.
Tsuruko's Tea Journey – Saturday, 25th, 9:00 p.m.
Voyage of Adventure: Retracing Donelson's Journey –
 Tuesday, 28th, 7:00 a.m./2:00 p.m.
Walkin' California "Yosemite" – Sunday, 12th, 4:30 p.m.
Wendell Castle: A Portrait – Saturday, 25th, 8:00 p.m.
When the World Answered – Wednesday, 29th, 2:00 p.m.



This award-winning documentary recounts the personal life journey of Mabel Dodge Luhan, an influential woman 100 years ahead of her time, who searches for love, freedom and spiritual transformation. The film traces her evolution as an independently wealthy writer, salon hostess, art patroness, social activist, defender of Native American and women's rights and resident of New Mexico.

In 1917, Mabel moved from Greenwich Village, New York to Taos, New Mexico and discovered the home she had been seeking—magical, untouched and luminous. She fell in love with and married a full-blooded Tiwa Indian from Taos Pueblo, in a time when this was revolutionary.

Inspired by the native culture and distinctive landscape, she invited many well-known artists, writers and social activists to Taos, forever shaping the character of the region. Mabel was responsible for bringing Georgia O'Keeffe, Ansel Adams, D.H. Lawrence and many others to New Mexico.

Tuesday, May 21st at 7:00 p.m. (3-2)
Sunday, May 26th at 6:00 p.m. (3-2)

Thursday, May 16th at 7:00 p.m. (3-1)
Tuesday, May 21st at 8:00 p.m. (3-1)