



 **NEW ENGLAND** PUBLIC RADIO.

AWARD
WINNING
MEDIA LAB
STUDENT

////////////////////////////////////

NEPR ARTS
REPORTER
JILL KAUFMAN
ON FINDING A
GOOD STORY

////////////////////////////////////

BINGE
WORTHY
LISTENS

Annual Report

July 2017 – June 2018



Katie Moonan

WHAT DOES IT TAKE TO BRING YOU **NEPR**?

20,000 FEET OF WIRE

AND FOUR MILES OF CABLE

On behalf of the NEPR Foundation Board of Directors, our music hosts, reporters and staff members, I want to personally thank you for your generosity and for being part of our listening community. New England Public Radio would not be here without your passionate support. Whether you've been an underwriter since the early years of WFCR, or just became a first-time member, we are incredibly grateful for your support.

In these pages you'll read about our newsroom's accomplishments this year, and the varied public events we produced to help deepen community engagement around important topics. You'll learn our music host's picks for the year's best albums, and hear from longtime NEPR reporter Jill Kaufman about her new beat — our region's arts and culture scene. We hope you enjoy this peek inside your public radio station!

Thank you for your generous support. Keep listening.

Warmly.



Martin Miller
CEO and General Manager
New England Public Radio



**Media Lab alum Gary Campbell and
NEPR CEO and General Manager
Martin Miller**

Seen together at #YouthMakeMedia
— an exhibition on view at the UMass
College of Education in the Fall of
2018 that shared curriculum and
student stories.



WELCOME RIMA!

New England Public Radio welcomed A. Rima Dael as the station's executive director of development and major gifts this year. Rima has served in the role as interim director since November of 2017.

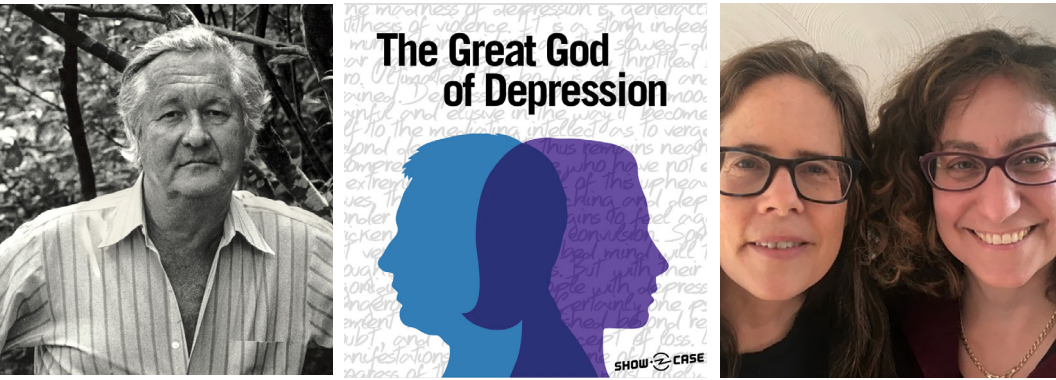
"We are delighted to welcome Rima to the NEPR team," said CEO and General Manager, Martin Miller. "She brings 20 years of development, marketing, and teaching experience to NEPR, and arrives at a critical time in NEPR's history as we begin to develop plans to execute a very ambitious strategic plan and raise the resources to provide even greater service to our region."

Prior to joining NEPR last fall, Rima was the executive director of institutional advancement and foundation at Springfield Technical Community College (STCC) and the executive director at Country Dance and Song Society, an international arts service organization for North American traditional dance, music and song. She was also a founding faculty member of the Nonprofit Management and Philanthropy graduate program at Bay Path University. She continues as an adjunct professor in the program.

GIVE & GET DOWN NEPR scene

In August, Evelyn and Gil Billings received The Lynne A. Shapiro Award for their dedication to NEPR. As thanks for their generous support of New England Public Radio, volunteers and underwriters gathered for an end-of-summer party at Jacob's Pillow.





Left to Right: William Styron, Great God of Depression logo, Pagan Kennedy and Karen Brown

Karen Brown's voice is familiar to New England Public Radio listeners — the senior reporter covers science and mental health for NEPR and is regularly featured on NPR's nationally syndicated news magazines, *Morning Edition* and *All Things Considered*. This year, she's added "podcast producer" to her resume. Her five-part podcast, *The Great God of Depression* premiered on Showcase from PRX's Radiotopia with support from New England Public Radio this summer. *The Guardian* declared it "bingeable".

The Great God of Depression is a five-part narrative podcast co-produced by NEPR senior reporter Karen Brown and *New York Times* journalist Pagan Kennedy. It tells the true story of literary genius William Styron, brilliant brain scientist Alice Flaherty, and their shared quest to understand the secrets of madness and creativity. The series also explores how Styron's groundbreaking memoir *Darkness Visible* changed the conversation around mental illness.

NEPR was incredibly proud to work with Karen and the team at Radiotopia on the podcast. In September, we hosted a listening party at Gateway City Arts in Holyoke featuring Pagan Kennedy, podcast host and co-producer, Ian Coss, musician and sound designer, Julie Shapiro, executive producer of Radiotopia, and Alice Flaherty, a Boston neurologist and subject of the story. The event offered an opportunity to listen to the first episode of the series together and talk about the mental illness and its impact on creativity with members of the community.

Listen to the full series at radiotopia.fm/podcasts/showcase or nepr.net/greatgodofdepression

a decade of art champions



1. A and H Awards by Josh Simpson 2. NEPR Reporter and host Kari Njiiri 3. NEPR commentary editor Tema Silk and NPR reporter Karen Grigsby Bates 4. Springfield Sci-Tech Band

A sell-out crowd packed the Log Cabin to celebrate the 10th year of New England public Radio's signature spring celebration, The NEPR Arts and Humanities Awards in May. The NEPR Foundation was pleased to honor The Literacy Project; poet and founder of Springfield's Teatro V!da, Magdalena Gómez and music director of the Hartford Symphony Orchestra, Carolyn Kuan with the 2018 award. David Tebaldi, executive director of Mass Humanities was honored with the first ever "Lifetime Achievement" award. Dr. Tebaldi retired in October after 33 years at the helm of Mass Humanities. Guests were treated to a wonderful evening of celebration including a live interview with Karen Grigsby Bates of NPR's Code Switch team and a surprise appearance by the Springfield Sci-Tech Band who won the award in 2012. They were among the many previous recipients to return to celebrate the arts with New England Public Radio's friends and supporters. While she was here for the Arts and Humanities Awards, Ms. Grigsby-Bates was also the featured speaker at NEPR's first Sustainer Breakfast event. She spoke with NEPR reporter Karen Brown about her beat, and the role that public media has to play in the era of fake news.

Stavans and Suarez

In April, NEPR hosted veteran journalist Ray Suarez for a conversation with Ilan Stavans, host of NEPR's *In Contrast* podcast at the The UMass Springfield Campus across the street from our headquarters. The two spoke about the role of the media in today's society and the exchange inspired a in-depth seven-part special of the podcast featuring an extended conversation on the topic "What's Wrong with American Media?" You can listen to this and other episodes of the podcast at NEPR's podcast hub nepr.net/podcasthub or wherever you listen to podcasts.



Jazz, Baby!

NEPR's annual jazz holiday party was held at The Hotel Northampton in December Of 2017. The 1920's-themed *Jazz, Baby!* featured music by Kellso's Hot Six and Hotsy Totsy, a variety of vintage vendors including the Botaniste and BMc Vintage of Easthampton, and Vapor City Vintage of Northampton; a vintage portrait studio by Sloan Norris Tomlinson and dance lessons with the Lindy League of Western Massachusetts. The sell-out crowd came dressed to impress, decked out in strings of pearls, shiny spats and plenty of fringe — all in support of New England Public Radio!

EVENTS

Top Local Stories of FY2018*

- 1** *Routine Mailing To Dairy Farmers Included A Rare Note: Suicide Hotline Info*
by Sam Hudzik
- 2** *Kentucky Group Gives Western Mass. A Lesson On Coal Country*
by Karen Brown
- 3** *New England Colleges: High School Walkouts Will Not Affect Admissions*
by Sean Teehan
- 4** *Fires That ‘Suddenly Erupted From The Ground’: A Disaster In Maine, Remembered*
by Jill Kaufmann
- 5** *Tackling The N-Word On Campus, After Her Famous Father Used It On Stage*
by Karen Brown



NEWS and BREWS “Springfield’s Big Gamble”

In June, New England Public Radio and the New England News Collaborative hosted “Springfield’s Big Gamble,” a lively discussion with some of the region’s top reporters on the casino beat. This special edition News and Brews was held at Valley Venture Mentors in downtown Springfield.

“These casinos are such a huge news story for Springfield, East Windsor, and the whole region. And it’s an incredibly complicated story — with plenty of winners and losers,” said Sam Hudzik, news director at New England Public Radio. “We were able to bring together some brilliant reporters who know this issue inside and out and have a real community conversation on what lies ahead.”

The conversation was moderated by John Dankosky, executive editor of the New England News Collaborative and host of the radio program and podcast *NEXT*. Panelists included G. Michael Dobbs, managing editor of the *The Reminder* newspapers; Frederick Hurst, publisher of *An African-American Point of View*; Kristin Palpini, reporter for *The Berkshire Eagle* and Mark Pazniokas, capitol bureau chief for *The Connecticut Mirror*.





Photo: Carrie Healy\NEPR

New England Public Radio's newsroom picked up three first-place PRNDI Awards this year from Public Radio News Directors Inc., an independent organization of public radio news directors. The awards spanned a broad number of categories: Best Commentary, Best Interview and Best Soft Feature.

We're honored to be recognized by other public radio journalists, but mostly we're just honored to be able to share these stories with our listeners.

— Sam Hudzik, News Director

Best Commentary

A Son Reckons With His Father's Hunger To Escape Poverty

Written by: Gary Campbell

A graduate of New England Public Radio's Media Lab program wrote this piece about his father, who no longer lives at home with him. See page 8.

Best Interview

Embedded In Harvard Forest For One Year, To Study One Tree

Reported by: Carrie Healy

Author Lynda Mapes spent a year in the Harvard Forest in Petersham, Massachusetts, chronicling a single tree. This red oak stands in one of the oldest and most intensively studied research landscapes in North America.

Best Soft Feature

Millennial Magnum Pls: Recent College Grads Become Private Investigators

Reported by: Karen Brown

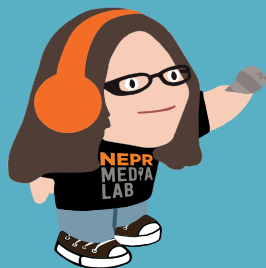
Entering the job market out of college can be fraught — and require some creative gumption. Consider Andrew: a friendly, lanky recent graduate of Elms College. Andrew is a private eye — well, officially, "private investigator," but who can resist a little noir embellishment?

#YOUTHMAKEMEDIA

Award Winning Media Lab Student



The PRNDI Best Commentary award was given to Gary Campbell, a 2017 graduate of Springfield High School for Science and Technology. Campbell completed the piece as a student in New England Public Radio's Media Lab program, which teaches local youth audio journalism and production.





Gary Campbell in class



Carlos McBride, Director of NEPR Media Lab, with Gary Campbell

A Son Reckons With His Father's Hunger To Escape Poverty

by Gary Campbell

My name is Gary, first born of Sophia, and Gary senior. As a young boy, I had more stuff than the average kid. So did my brothers, Tyriek and Ke'naz. I never wondered why we got all these things. I just figured they were cool! My home was comfortable, clean, like the smell of OxiClean and Fabuloso. But at times there was also a different aroma. That other smell I'd been smelling all my life was weed. And the person smoking it was my dad.

My father, who was born in Saint Ann, Jamaica, was a weed dealer. He was also a block-party DJ. He'd play stuff he loved: hip-hop from Nas, Jay Z and Biggie, then reggae by Buju Banton, Garnett Silk and Bob Marley.

When I was around seven, everything changed. My father began talking to himself, seeing things that weren't there. It turned out he'd developed schizophrenia. My mom says it was activated by a hard drug given to him by one of my family members. Sometimes, even though you think they are, family isn't family.

After that, Dad moved to Chicago to live with my grandmother. Nobody told me why at the time. Or why we suddenly didn't have Columbia coats, Timberlands and Polos to wear.

Life became difficult. Catastrophic is probably more like it. I didn't know what welfare was until welfare hit us. My mom had four more kids with two other fathers. Sometimes they were not around either. I had to grow up — fast. I couldn't afford to be reckless like other kids. I was too worried about how my family was going to make it.

My dream has always been to stay in school and write music. But in eighth grade I was invited to join a gang. The plan was to rob a Chinese-food delivery person. The money would help my mom. But I couldn't stoop that low.

I wanted to be true to myself and live according to the law. And I have.

Sometimes I get to see dad in the summer. But even when I can't, I talk to him on the phone and tell him I love him. I can't see his face, but I know he's smiling as he says, "I love you too, son."

There are times I look in the mirror and see in me my father's eyes and his hunger to escape poverty. It's frightening. But I take that hunger and I flip it to fuel my dreams. ★



top music albums of 2018 from your favorite NEPR music hosts

TOM RENEY JAZZ À LA MODE

Harold Mabern, *The Iron Man: Live at Smoke*
The 82-year-old pianist sounds as sharp and powerful as ever leading his quartet (with saxophone phenom Eric Alexander) on two sets of bebop, blues and ballads at an uptown New York nightclub that's a virtual second home to these hard bop masters.

STEVE PETKE CLASSICAL

2018 was the 100th anniversary of the birth of Leonard Bernstein, so my pick is a recording of his popular orchestral works with

the Royal Liverpool Philharmonic Orchestra, conducted by Christian Lindberg. All of the fire, jazz and tenderness in Bernstein's music is there, and it's from an English orchestra!!!!

BEX TAYLOR JAZZ À LA MODE

Stephen Riley, *Hold 'Em Joe*
Riley's tribute to Sonny Rollins stays true to the tenor saxophonist's piano-less trio in spirit, even down to the song introductions.

WALTER CARROLL AFTERNOON CLASSICAL

My choice would be the Boston Symphony Orchestra in the *Symphonies Nos. 4 and 11 in the Year*

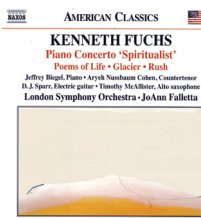
1905 by Shostakovich. Andris Nelsons conducts the splendid BSO in the latest installment in the project of recording all of Shostakovich's symphonies which has been recognized with Grammys for previous recordings.

PETER SOKOLOWSKI JAZZ À LA MODE

Kenny Barron, *Concentric Circles*
The veteran pianist has a distinctive and graceful touch, and his new quintet of young players join him for an album as soulful as it is elegant.

KARI NJIRI JAZZ SAFARI

Margo Rey, *The Roots of Rey-Despacito*
Margo
A wonderful Latin



jazz re-imagining of the American and Latin American songbook, sung in English and Spanish by Mexico-born Rey and co-produced by Grammy winning pianist, composer and band leader Oscar Hernandez.

JOHN NOWACKI MORNING CLASSICAL

My pick for 2018 is *Spiritualist*, featuring the music of Connecticut resident and composer Kenneth Fuchs. The Grammy-nominated CD includes a piano concerto, a concerto for electric guitar and orchestra, music for counter-tenor and orchestra, and

a concerto for alto-saxophone and orchestra. Great music all-around, and fantastic performances!

RAQUEL OBREGON TERTULIA

Espontáneo: The Abdala Sessions
Maykel Elizalde
Ruano, Dayron Ortega
Guzmán and Eduardo
Silveira. Simple,
elegant and great
rhythms.

JON SOLINS CLASSICAL

Bernstein: *On the Waterfront*,
Royal Liverpool
Philharmonic
Orchestra
There were many
tributes to Leonard

Bernstein during his centennial year, but this one offers a treasure trove of his music for Broadway, ballet and film, including his seldom-heard Oscar-nominated score for the 1954 classic film *On the Waterfront*. The performances are vivid, the sound transparent, while Lindberg's tempos are often less hysterical than some other conductors, letting Bernstein's rhythmic complexity shine through. A treat from beginning to end.



SMELLS LIKE A GOOD STORY

5 Questions for NEPR's Arts and Culture Reporter, Jill Kaufman About Having a Nose for the Creative in New England.

Jill has been reporting, producing features and commentaries, and hosting shows at NEPR since 2005. In September, along with NEPR news director Sam Hudzik, they launched a new 'arts and culture' beat, broadening what the news department has been doing for decades on radio, and more recently on the web: long format feature stories about theatrical and music performances, visual arts, cultural business developments, and stories about New England's history and the changes underway. We asked Jill about what it's like to cover our region's vibrant arts scene.

There's so much happening in our region when it comes to the arts, how do you choose which stories to cover?

Obviously, the story has to be connected to New England in some way. So I've been digging up stories about how people live, what they create, how they think. We've increased our feature reports and spot news about artists, events, lifestyles, arts organizations, and arts news in the context of politics, the economy, climate change, and even health care.

So with all that going on, how do you decide what makes a story?

When there's a news peg, like the opening of MGM in Springfield last September, that gives me a frame, and I dug in and looked for a creative side of the casino industry. Found it: I wrote a business story about booking big name bands in the region, how with MGM in town, it's a new game, for better and for worse, according to sources. The story gave us an excuse to look back to when Springfield was a top destination for groups like the

Rolling Stones and Elvis. We had lots of music to mix in — which is fun for listeners. We definitely need more fun.

But mostly like any reporter, I read a ton — press releases and arts schedules. College and business websites. I talk to people — strangers and friends, and your friends, media contacts, artists. What are they seeing and what are they thinking about. Who's making what happen. The beat is a lot of enterprise reporting.

Bottom line, it has to at least smell like a good story! But we also want to make sure we are covering everyone's arts. Everyone's culture. I'm loathe to use the word 'diversity' because we don't want to pay lip service, and it's a priority.

How do you see the arts impacting other parts of life in western New England?

We got this beat going because we believe the audience doesn't live and can't thrive by news alone. When a listener hears about the context of how a 'piece' of art is made or a museum exhibit is curated, or is introduced to a musician — who by day is a high school shop teacher, or learns that someone took a chance by writing a play that speaks a certain truth, or composed a new opera based on current events and Greek philosophy — that's all impact. That's life. And it's what we also need in addition to learning why

the price of milk may be soaring, or any number of big-ticket items coming out of Washington or Boston or Hartford.

What has been an unexpected or surprising story you've covered on the arts and culture beat?

So much is unexpected, hearing about people's lives. What's surprised me is that I didn't expect to be so moved by the lengths regular people (as opposed to professional artists) go to be creative. And getting the essence of that in a story for listeners — that's a huge part of our work.

So basically, you can say almost anything (within reason) is arts and culture?

Yes! Within reason. Check out this quote out from Cristina De Rossi, an anthropologist at Barnet and Southgate College in London. I found it via WNYC. She says:

"Culture encompasses religion, food, what we wear, how we wear it, our language, marriage, music, what we believe is right or wrong, how we sit at the table, how we greet visitors, how we behave with loved ones, and a million other things."

A million other things...

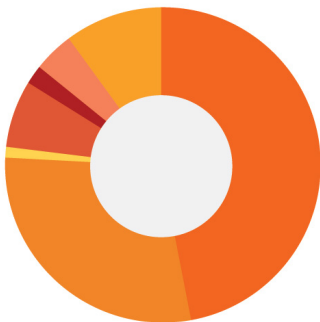
Thanks, Jill! You can hear Jill's reporting on NEPR and find her stories at nepr.net.

382 PAIRS OF SOCKS

TO NEPR DONORS

THE NUMBERS

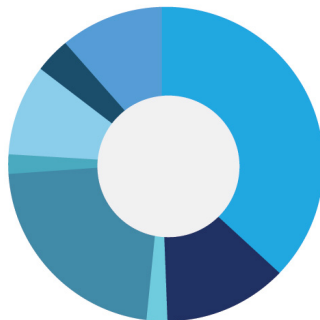
2018 REVENUE



47%	Contributions	\$ 2,849,412
28%	Underwriting	\$ 1,669,941
12%	UMass In-Kind	\$ 721,164
5%	Corporation for Public Broadcasting	\$ 311,526
2%	Other Income	\$ 94,219
5%	In-Kind Goods and Services	\$ 305,986
1%	4 College Support	\$ 57,715

\$6,009,963

2018 EXPENSES



32%	Programming and Production	\$ 1,974,583
18%	Fundraising	\$ 1,104,479
13%	Engineering	\$ 778,635
10%	Administration	\$ 600,195
12%	UMass In-Kind	\$ 721,164
6%	Depreciation	\$ 377,216
5%	In-Kind Goods and Services	\$ 305,986
4%	Outreach	\$ 217,467

\$6,079,725

DONORS

CONTRIBUTORS \$1000+

J. Rockwell and Colleen Allen
Amherst College
John and Elizabeth
Armstrong
Sarah Bailey
Duane Bailey
Joanne Ball
Barings LLC
Pauline Bassett and Alan
Katz
Claire Bateman
Linda J.L. Becker
Lucy Wilson Benson
Edward and Claire
Blatchford
Les and Sara Bluestone
**Timothy Boomer and
Judith Nusinoff Boomer**
Elbert and Bernice Bowler
Irving and Brenda
Buchbinder
Barbara Buckalew
Margaret Bullitt-Jonas and
Robert Jonas
Rosemary Caine and Howard
Natenshon
Marta Calas
Rosamond Campbell
Sarah and Paul Carlan
Coleman Casey and Jo
Champlin Casey
Julie Caswell and Richard
Rogers
John Clapp
Lori Clarke and Leon
Osterweil
Ronald and Nancy Compton
Margo Culley
Charles and Elizabeth
D'Amour
Melissa Dane and Delmar
Wilcox
Jeffrey Davies and Victoria
Guest
E. Dawson Foundation
Walter Denny and Alice
Robbins
Peter and Florence DeRose
Lisa d'Errico
Scott deWolski and Rachel
Likover
George Dickstein
Roger and Irene Dietlin
Kerry Dietz, Dietz and Co.
Architects
Colette and B. John Dill
Peter Dimon
Deborah Donaldson and
Cathryn McDonough
Donna Dunn
Jenny and Dave Emery
The Eppes-Jefferson
Foundation, Inc.
Sheldon Evans and Martha
McMaster
Frederick Feibel
Stein Feick
**Robert Feldman and
Katherine Vorwerk**
Janet Flagg and Wayne
Rawlins
Maurille and Janice Fournier
Robert and Louise Fredette
Ellen and Richard Freyman
Rebecca Fuller
Jonna Gaberman and Bruce
Wintman
Thomas Gardner and Marian
Godfrey
Anne Garrels
Zean Gassmann
Jacob Gatten
Dorothy Gavin
Mary and Ted Gawlicki
Walter Giger and May-Wo
Foo Giger
Mickey* and Penina Glazer
Norbert Goldfield and Sandra
Matthews
Steven Gough
Mrs. Thomas J. Groark
Ellen Grobman and Evan
Bollinger
Philip and Jane Hall
Stephen and Daphne Hall
**Patricia Hallberg and
Stephen Brand**
Hampshire College
William and Marsha
Harbison
Mary Catherine Harraghy
Stephen Hasbrouck
Wil Hastings
Emily and John Hayden
Jane and Paul Hetzel
Jennifer Heuer and Brian
Ogilvie
Dianne Hobbs
Margaret Hughes
David and Anne Hulley
Sarah Jacobson and Curtis
Wells
William and Jean Jeffries
Ann Rosalind Jones
Thomas and Peggy Kehoe
William Kelliher
Elizabeth Kemp
John and Pat Kendzierski
Ellen Kennedy and Mark
Gold
David Kenny and Marina
Julian
Richard Kessler
Carol and Ken Kinsley
Maureen Kontrovitz
Robert Krueger
Charles Kuchenbrod and
Rebecca Sielman
Eli Kwartler and Barbara
Benda Jenkins
Mark Lantz
Elizabeth and Nathanael
Larson
A. Laurel-Cafarella and T.
Laurel-Paine
Sara Lawrence
Nelson and Carol Lebo
Robert and Ellen Leonard
Nick Linares
Benjamin and Sharon Liptzin
Scott and Deborah
Livingston
Ted and Adlyn Loewenthal
Beth Logan Raffeld and
Philip Khoury
Anne Lombard
Kathleen Lovell
Jane and William Low
Gerald and Sheri Lublin
Martha Lyman
T.G. and M.B. Magill
Richard Mains and Betty
Eipper
Judith Markland
Anna Markus
Melinda McCall
Darlene and William
McVeigh
Angelika Melien
Patricia Miller
Martin, Brenda, Aaron and
Liliya Miller
Steven and Moira Mitus
Susan Monks
J. Donald Moon and Lucy
Ferriss
Kay Moran
Barrett Morgan
Steven Morin
William and Mary Sue
Morrill
Mount Holyoke College
Robyn Newhouse, PhD
Bill Newman and Dale
Melcher
Heidi O'Neill and Steve
Williams
Howard and Ann Orr
William and Agnes Peelle
Claudia Perles
Lorna and Dale Peterson
Nancy Pick and Lawrence
Douglas
Roxie Pin
Ronald Pipkin
Edward Potter and Regina
Olchowski
Jeffrey Prince and Beth
Firmen

Marietta Pritchard
 Claire Pryor
 Katherine Queeney and John
 Staudenmayer
 James and Luce Reiss
 Richard and Helen Rescia
 Wenda Restall
 Dara Ribicoff
 Marilyn Riddle
 Tony Rogers and Anne
 Nugent
 Wisty Rorabacher and Judy
 Draper
 Richard and Kathleen Rubin
 Ann Sagalyn, DMD and
 David Marks
 Brenda Salyer and Annette
 Tector
 Whitty Sanford and Tom
 Miner
**Jamina Scippio-McFadden
 and Calvin McFadden**
 Roy and Mary Ellen Scott
 Select Equity Group, Inc.
 Daniel and Lynne Ann
 Shapiro
 Stephen and Leslie Shatz
 Peter Siegelman and Sean
 Redding
 Mara Slawsky and Kirsten
 Losert
 Smith College
 Ruth Solie
 Peggy and David Starr
 Patricia Steele-Perkins
 Joan Steiger
 Barbara and Allen Steiger
 Catherine Stevens and
 Juliette Meeus
 Keith and Catherine
 Stevenson
 Elizabeth Stone and Marc
 Berman
 Peter Straley and Donna Ross
 Robert Strassler
 Kristin Stueber
 Kumble and Mala
 Subbaswamy
 Roberta Swafford and David
 Hoopes
 Kathleen Swaim
 Elizabeth Swanson
 Sarah and Mark Tanner
 Ralph and Vicki Tate
 Paul Thaler and Linda
 Batchelor
 John Todd and Dorothy
 Nemetz
 William and Caroline Toner
 UMass Amherst
 Nancy and Bruce Urbschat
 Cecil and Lana Ursprung
 Elizabeth Van Dyke and
 Joseph Augustine

Lyn Walker
 Phebe Wallace
 Laura Wallis
 Janet Wallstein and Jane
 Dewey
 Patricia Warner
**Stephen and Sally
 Wittenberg**
 Ruth Ann Woodley and Peter
 Gourley
 David and Elizabeth Woods
Gail and Michael Yaffe
 Margaret Zelljadt
 Michael and Cheryl Ziebkla

CONTRIBUTORS **\$500 - \$999**

Robert and Frances Abrams
 Kathy Aidala
 Joanne Alderman and Doric
 Dods
 Neil Aldin and Marylou
 Lacek
 Roger Alsbaugh
 Larry Ambs and Jennifer
 Kramer
 Gloria Amhadjian
 Charlie and Deborah Austin
 Tom and Lynne Baker
 Jay Ballard
 Michele Barale
 Rick Barnard
 Mary and David Bartlett
 Janet Beatty
 Laurence and Beth Beede
 Sheila and Micky Rathbun
 Peter Benjamin and Liz
 Bramson
 Peter and Ellen Berek
 David and Iris Berkman
 Raymond Bertuzzi
 Joe and Marie Bete
 Bunny Bewick
 James and Sally Bianco
 Joan and Bradley Biskup
 Adam and Barbara Blacksin
 Jeff and Marilyn Blaustein
 Peter and Catherine Bloom
 Tracy Bodine
 Cynthia and Gary
 Bombardier
 Aili Bond
 Andrea Bordenca
 Beatrice Botch and Peter
 Samal
 Jennifer and Richard
 Bourgeois
 Susan Bourque and Christine
 Shelton
 Natalie Boyce
 Jeff Brandenburg
 Marybeth Bridegam
 James and Riki Brodey
 Eric and Daisy Broudy
 Leslie Brown

Carole Bull and Molly Mead
 John and Lale Burk
 Angela Burke
 Janet Bush
 Durham and Jean Caldwell
 Patricia Callahan and David
 Deed
 Bob and Pat Calnen
 Eleanor Caplan
 Jeffrey and Ann Caplan
 Gerard Caprio and Jeanne
 Marklin
 Mary Cardin
 Barbara and Robert Carroll
 Elliot and Karin Cattarulla
 John and Pamela Chandler
 Carolyn Clark
 Paul Clark and Carol Parrish
 Robert Clark and Fifi
 Scoufopoulos
 The Clock Hollow Fund
 Claudette Rhonda Cobham-
 Sander
 Peter and Joan Cocks
 IL Cohen Foundation
 Elisabeth Colt
 Allison Cook
 Lorna Coppinger
 Kathleen Cowles and Charles
 Adams
 Robert and Joan Cramer
 Sara Crawley
 Sarah Creighton
 James and Marion Crocker
 Robert Cross
 Julian and Robbie Crowell
 Miriam and Tom Curnin
 Robert and Deborah
 Cushman
 Steve Dacunha
 A. Rima Dael and Brandon
 Braxton
 Pamela and Peter D'Ambrosio
 Steven and Joyana Damon
 Jeffrey Daniels and Kate
 Miller
 Jonathan and Linda Daube
Sharon Davenport
 Ron and Guiliana Davidoff
 Catharine Deely
 Timothy Denney
 John Deweese
 Bonnie Jean Dibelius
 Bruce and Diane Diehl
 Seth Dinuovo
 Jan and Deborah Dizard
 Bob Dobson
 Richard and Bernadine
 Dooley
 Lisa Dufrane
 Joel Dundorf and Kim
 Albertson
 Seth and Marjorie Duneheew
 Mark Dunn

Rafal Dybacki
 Joseph and Virginia Edelson
 Jane Edwards and Humphrey
 Tonkin
 Kevin and Donna Edwards
 David Edwards
 Jean Egan and Robert Okun
 Diane Eigsti Gerber
 Barbara and Arthur Elkins
 Robert and Karen Engell
 Ronna and Neal Erickson
 Miles and Sonia Ericson
 Kevin Erkkila and Sharon
 Mahoney
 Diana Falvo
 Robert Fazzi and Diana
 Buckley
 Wendy and Eric Federer
 Edith Fein
 Steven and Donna Feldman
 John Felton and Martha
 Gotttron
 Gary and Susan Fentin
 Louisa Ferree
 Barbara Finlayson
 H. John and Sebern Fisher
 Sandra Fitzpatrick
 Douglas Fraser
 Tom and Leslie Freudenheim
 Sally and David Fuller
 Sue E. Fuller
 Ken and Karen Furst
 Sarah Gamble
 Dan and Jane Giat
 Alan Gilburg
 Michael and Sally Ginsburg
 Michael Gorra and Brigitte
 Buettner
 Mark and Kristina Gossner
 Elizabeth Gouverneur and
 Richard Cohen
 Kevin Grennan and Mary
 Spellicy
 J. Lynn Griesemer and Bryan
 Harvey
 Frederick Griffiths
 Sally and Al Griggs
 Haim and Yaffa Gunner
 Marcia and Richard Haas
 Jan Hackman
 Anastasia Hallisey and Luc
 Timon
 Ray and Barbara Hand
 Christine Hannon
 Colin Harrington and
 Deborah Balmuth
 Constance Harvard
 Keith and Terri Harvey
 Perry Hasson
 Ruth and Bruce Hawkins
 Charles Hayward
 Ryan Hayward
 Carol Heim

Marie Hennessy
 Gretchen Herring and
 Robert Martin
 Dorothy Hertzfeld
 Louisa Heyward
 Mary Clare Higgins
 C. Richard and Joann
 Hinckley
 Chiu-Wun Ho
 Brad and Carleen Hoffman
 Catherine Hogan
 Serin Houston and Will
 Decherd
 Carolyn Jacobs
 Kannan Jagannathan
 Paul Jahnige and Sally
 Loomis
 Bud Jason
 Paul Jodka and Carol
 Richardson
 Keith and Marietta Johnson
 Charles Johnson
 Steven Jones and Adele
 Franks
 Jeannie Jones
 Leigh and Richard Jones-
 Bammann
 Frances Jones-Sneed and
 Stephen Sneed
 David and Carol Jordan
 Elaine Kachavos
 Karen and Scott Kaeser
 Kathleen Kane and Craig
 Knowlton
 Matthew Kane
 Priscilla Kane and John
 Hellweg
 Paul Kanev
 Anand Kanjolia
 Mary Kapner and Robert
 Kapner
 Bob and Jan Keefe
 Art and Maura Keene
 Marvin and Carol Kelley
 John and Rebecca Kennedy
 Mark Keroack and Annmarie
 Errichetti
 Mary King
 Sally King and Eric
 Lukingbeal
 Tracy King
 John Kingston and Andrea
 Cole
 J. Robert and Gale Kirkwood
 Ralph Klumb
 Jeffrey Knight and Audrey
 Guhn
 Chelen and Brian Kost
 Sharyn and Peter Kovalesky
 Patty Kruglak
 Alan and Carrie Nola Kulig
 Shau-Wai and Marie Lam
 Jack and Peggy Lareau

Neil and Rissa Larsen
 Joan Leavitt
 Mahri Leonard-Fleckman
 and Judson Brewer
 Ellen and Allan Leritz
 Peter and Beth Levin
 Michael S. and Carolyn W.
 Levine
 Michael Lewandowski
 Mary Lightner
 C. Peter and Maija Lillya
 Cristi Lindblom
**Timothy Loew and Allison
 Alaimo**
 Lydia Long and George
 Goodman
 Cynthia MacKay
 William and Carol
 MacKnight
 Claire Magauran
 Sarah Mager
 Edward Maltby and Honora
 Owens
 Priscilla Mandrachia and
 Vincent Ferrar
 John and Catherine Manly
 Ann Mann
 Tom and Karen Marino
 John Masuck
 Bob Maxwell and Jason
 Legleiter
 Kevin McAllister and
 Christine McKiernan
 Jane McAnulty
 Kathleen McCartney and
 William Hagen
 Elizabeth McCosh-Lilie
 John and Emily McDermott
 Hugh and Katharine McLean
 Dave and Rosanne Medeiros
 Hollis Melton
 Allan Meneely and David
 Kelly
 Mary Mercuri
**Cory Mescon and Ben
 Baumer**
 Edward and Carol
 Mierzewski
 Lynn Jean Miller
 Richard Millington and
 Nalina Bhushan
 Lorraine Millman
 Kelly and Joe Minton
 Sally Mitchell
 Kristin Morales-Lemieux
 Thomas and Sarah Moriarty
 David and Cynthia Morrell
 Eric and Christine
 Mortensen
 Christine Natti
 Joseph and Patricia Neafsey
 Harold and Joan Nelson

Howard and Yvonne
Nicholson
Cynthia Nims
Gretl Nunnemacher
Pam and Gordon Oakes
Katherine O'Brien
Sarah O'Brien
Thomas O'Neil
Ed and Jean O'Neil
Paul and Miriam
Oppenheimer
Ruth Owen Jones
John Palmer and Suzanne
Hannay
Kate and Peter Pappas
Beverly Park-Woolf and
Stephen Woolf
Christine Parrish and
Suzanne Smith
Edward Pawlak and Jane
Roth
Robert Paynter
Jack and Penny Pearson
Marie Peirent
Katherine Perkins
Sherrod Perkins-Keane
Suzanne and Stephen Petke
Lawrence Picard
Lisa Plantefaber and Steven
Fischel
Jennifer Polins and Francis
Savage
Sally and Lewis Popper
Diana Hitt Potter
Gladys Powers
Mary Ellen and John Preston
W. Lowell and Kimberly
Putnam
Alice Parker Pyle
Linda Rahm and Barbara
Cruikshank
Cornelia and Wallis Reid
Jane Reinhardt
Ginger and Edward Reiter
Tom and Margaret Reney
Bea Robinson and Chuck
Bradway
Katherine and Greg Rolland
Kenneth Rosenthal
Ellen Rossi and James Bly
Marcia and Thomas Rossi
Jean and Georgeanne
Rousseau
Greta Rubinow
Joanne Sacher and Patrick
Holloway
Anthony Santonicola
Margaret Sarkissian and
Jerry Dennerlin
Theresa Schmidt
David Schneider and Klara
Moricz
Julie and Martin Schwager

Jason Seacat and Adam
Daniels
Ann and Earlon Seeley
Harry and Sharon Seelig
David and Alice Shearer
Debbie Shriver
Barbara Sicherman
Lawrence Siddall
Krystyna Sikorska
William and Elizabeth Sillin
Lynette Simpson
Fraser Sinclair
John Singer
Amieland and Arminder
Singh
Ray and Elizabeth Siwinski
Patrick Slaney
Nancy Slator
Deborah Jane Slavitt
Linda Smircich
Garrett Smith
Melinda Smith
Andrew Smith and Nancy
Ashkin-Smith
Sylvia Smith and Susan Crim
Perry Smith and Carol Blinn
Thomas Snelham and Robbie
Calliham
Lyle Snide
Tom Sohre and Patricia Cote
Jane Sommer
Jenny Speck-Sherson and
Adam Sherson
Elizabeth Spelman
Charles Spencer
Robert and DiAnn Speth
Gordon and Anne Stagg
Robert Steinberg
James and Carolyn Stockman
Robin Stolk
Andrea Stone
Bailey Stone
Lynne and Paul Strecker
Jim and Cathie Talbert
Michael Talbot
Linda and Jim Tartaglia
Hilary Tatem and Ray
Hepper
Ray Thomas
Ralph and Judy Thompson
Barbara Jean Tomlinson
Bernadette Toomey
Vasilios Tourloukis
Peter and Elizabeth Van Loon
Tom Vaughan
Donald Verrastro and Heidi
Dollard
Bob and Delores Viarengo
Hugh Vine
Jeanette Voas
Robert and Elizabeth Von
Dohlen
Guila Wagner

Chatham Beech Charitable
Foundation
David and Sarah Warren
John and Sarah Waterman
Barbara Weene
Bill Wehrli
Patricia Wehrli
Steven Weiss and Carol
Daigle
Kim Wells and Lynda
Bundtzen
Steven and Nadine Wenner
Craig and Muriel White
Christina White
Oliver Wiley
Aryeh Wineman
Alexander Wolf and Jennifer
Gover
**Boris Wolfson and Amanda
Walling**
Lokye Wong
Robert Woo
Hoyt Wood and Jennifer
Austin
Patricia Wood
Christopher and Hilary
Woodcock
Jonathan and Meg Wright
Katherine Wyatt and Al
Vasquez
Gordon and Mary Wyse
Nancy Young
Patricia and Francis Zak
Paul Zimmerman
Sarah and Paul Zorn
Millie Zweir and Rich Rosen

CAR DONATIONS

For more information on how
you can donate your car to
NEPR, visit nepr.net

Ruth Aborjaily and David
Bannish
Charles Adams
Jay Alexander and C. Lynn
Bengston
Matthew Allen
Lauren and Nicholas Ames
Oscar Arce
Maureen Aylard
Adam Bajoris
Dave Baldwin
Kentston Bauman and Amy
Rodgers
Matthew Baumes
Ken Belliveau
Louis Berentes
Anne Beresford-Clark
Arthur Berg
David Bogan
David Bollier

Charlotte Boney and Charles Lasitter	Meredith Elgart and Lillian Arnold	Michael Kink
Luke Bouvier	Gregory Farmer	Catherine Kinsbruy-Jindela
William Bouyle	John and Eileen Ferriter	Eric and Lori Knapp
James Bower	Jan Flaska	Gretchen Knaust-Heick
Linda and Chuck Boyd	Mark Gardyna	Donna Kowalewski
Margaret and Ronald Boyko	Mitch Gaslin and Karen Schweitzer	Richard Kowalski
Matthew Brady	Piper Rae Gaubatz	Henry Kozloski
Joseph Brandt	Timothy Gilfillan	Dennis Krausnick and Christina Packer
Dena Briggs	Marjorie Giliberto	Christopher Krezmien and Rachel Glick
Gerald Britton	Theresa Girardi	Jerome Kubrak
John Bryan and Terry Peters	Miriam Goheen	Robert Labrie
Margaret Bullitt-Jonas and Robert Jonas	Anne Goldstein	Erika and Christopher Lachance
Michael Burke	Dorothy and David Goldstone	Gerard LaMarche
Brian Callaci	Justin Golub	Stacey Langknecht and Jesse Cobb Langknecht
Richard Callaghan	David Goodman	Liz Laria
Kathleen Callahan	Amy Goodusky	Wendy and Joseph Larson
Mary Carey	Michael Grabscheid	Christine Lebel and Mark Page
Christopher Carlton	Leah Grant	Kathy Lee
Raymond Carnelli	Thomas Greene	Jung Lee
William Carr	Beth Greeney and Hattaporn Wattanarat	Patrick Leighton
David Caruso and Sara Hunt	Rachel and Devin Griffiths	Marilyn Leonard
Sean Casey	Haim and Yaffa Gunner	Anne Lindsey
Robyn Caughlin	Allen Guttman and Doris Bergen	John Lipton
Andre Chaput	Jessica Haines-Stephan	Maureen Litwin
Carolyn and Garrett Charette	John Haletsky and Jared Phillips	Jeffrey Livingston
Angela Cheng-Cimini and Michael Cimini	Walter Hall and Marianne Curling	Peter Lobdell
Ian and Carolyn Clark	Mary and Edward Hamel	Luann Lord
Darryl Clark	Alan Harazin	John and Kathleen Lynch
Marjorie Clarke	Natalie Harding	Bruce and Marianne MacCullagh
Darcy Clifford	Brian Harrington	Janet Mackin
Peter Coffeen	Charlie, Cassie and Nick Hayes	Margot and Ed Malachowski
Faith Conant	Cathy Helgoe	Ashleigh Malinowski
Christopher Coshier	Hoon Heo and Kyung Hee Lee	Meredith Marciano
Gerald Costello	William Hersch	Matthew Marotta
Christopher Couch	Simon Hildt	William Marrapese
Brian and Michelle Crawford	Charles Hill	Justin Marsh
Kevin Creamer	Ivory Hills	Douglas Martin
Claire and Timothy Crews	Kathleen Hobart	Tim McCarthy
Matthew Dalton	Qian and William Holmes	Jean and Vincent McCaughey
Jeremiah Daly	Geoffrey Hudson	Artie McCollum and Katie Lazdowski
Susan and Edmund Dana	Katherine Hunter	Thomas McCoy, Jr. and Polly Byers
Mary Davidson	Mark Huyler	Jon McGrath
Chester Dawidczyk	Robert Hyland	Mary McKittrick
Mark and Samantha De Kanter	Scott Ingalls	Rosie McMahan
Solsiree Del Moral	Pierre Jacques	Carl Mead
Sheila DeRensis	Esworth James	Andrew Meade
Harriet Diamond	Claudia Johnsen	Thomas Meara
Leonard Dion	David Jones	Felicia Mednick
Deirdre Doherty	Terrell Joyner	Andrew Messenger
Blake Doherty	Jeremy Jungbluth	Kathleen Messmer
Kristin Dolcimascolo and Ryan Stefiuk	Kaja Katamay	Jason Milan
James and Juliann Dow	Bonnie and Joseph Katusich	Erin Miles
Michelle Driscoll	Nezhat Khosrowjerdi	Lynn Jean Miller
Lois and Raymond Ducharme	Jennifer and Charles Jeffrey Kinder	Donald Miller
Abaigeal Duda		Valeriev Nikolov Miroslav
Linda Dunakin		
Maurice Dusel		
James Eidelman		

Patricia Mocarsky
 Petriana Monize and Jahian
 Cooper-Monize
 Jeffrey Monseau
 Rachel Moore and Harry
 Dodson
 Bryant Morgan
 Alfred Morin
 Maz Morrissey-Tarburton
 Andrew and Heidi Moskovitz
 Flinn Mueller
 Kenneth Ryan Murdock
 William Murphy
 Jennifer Murray
 Edwin Murray
 Robert Muzzy
 Jennifer Myszkowski
 Melissa Nahas
 Karyn Nelson
 Katherine Newman
 Matthew Newman
 Kate and John Nicolaou
 John Nordell
 Helen Nwafor
 Tom and Kam Osborne
 Mary Odgers
 Pam Ososky and Jake
 Engram
 John Page
 Karen Parsons
 Claudia Perles
 Darrell Petit
 Barbara Phillips
 Alexander Phillips
 Jason Poirier
 Mark and Geri Pollard
 Gavin Portwood
 Roberta Potter
 Linda Preston
 Cernu Protector
 Leonard and Jane Provost
 Joan Przybycien
 Ellen and Michael Rainville
 Kerry Raivel and Patricia
 Malone
 Joshua Rapp
 Clifton and Arleen Read
 Ellen and Dennis Rearick
 Jennifer Reese
 Penny Remsen and Kathleen
 Collins
 Tom and Margaret Reney
 John Reuter
 Paul and Suzanne Rila
 Bea Robinson and Chuck
 Bradway
 Andrew and Irene Rollings
 Joyce Rosenfeld
 Jon Ross
 Matthew Ross
 Louis Rouleau
 Karen Rubin and Frederick
 Schneider

Melissa Rudder
 Robert and Mary Beth Sacco
 Donald Sailer and Kathy
 Wicks
 Holly Samociuk
 Corey Sanderson
 Joe Saphire
 Chris Sarfaty
 Richard Sargent
 Bethanie Sawyer
 Aren and Anne Scanlan-
 Emigh
 Kara Schnell
 Leah Shafer
 Carolyn Shattuck
 Dawn Shaw
 Kevin and Mary Sheehan
 Amy Sheehan
 Steven Silverman
 Gopal Sistla
 David Slack and Lucy Garbus
 Matthew Small
 Derek Smith
 Andrew Soles
 Laura Spencer
 Pete St. Marie
 Anne and Edward Stanek
 Cherie and David Steele
 William Steffen
 Carmel and Chris Steger
 Jacklyn Stein
 Abbie Steiner
 Saralyn Steingier
 Wyman Stone
 Barbara Storper
 Dillon Sussman
 Deborah Talamini
 Deborah Taricano
 Bex Taylor
 Lynne and Hans Teensma
 Beverly Tenenholz
 Kieth Terry
 Richard Tessier
 Shubha Tewari
 Dennis Thoma
 Lauren Thompson
 Theodore and Martha Tirk
 Samantha Torres
 Andrea Tosi and Stephen
 Cummings
 Kathleen Tracy
 Nathan Treloar and Margaret
 Weichman
 David Ulen
 Robert Van Flaglor
 Jeanette Voas
 Libby Volckening
 David Warren
 Emma Warren
 Matthew Watson
 James and Victoria Weed
 Nicholas Wegman and
 Lorilee

Richard Weiler
 Peter Weitzman and Diane
 Travis
 Ron and Cheryl Welburn
 Justin Wentworth
 Veronica Lee White
 Jeffrey White
 Christine White-Ziegler
 Tim Wilcox and Caroline
 Pam
 Geoffrey Willard
 Brayton and Mary Alice
 Wilson
 Thomas Wilson
 Peter Wingate
 Kim Wolfson
 Christopher and Hilary
 Woodcock
 Sharon Wretzel
 Beth Yanuskiewicz
 Carol Young and William C.
 Smither
 Michael Zaccaria
 Elena Zachary
 Vanessa Zaehring
 Jessica Zane
 Naomi Zeitz

UNDERWRITERS and COMMUNITY PARTNERS

1794 Meetinghouse
 A to Z Moving and Storage
 Abide
 About-Face Computers
 The Academy at Charlemont
 Academy Hill
 AEIOU Amherst
 Aging In Place Builders Inc
 All Energy Solar
 Allergy and Immunology
 Associates of New England
 American International
 College
 The Amherst Ballet
 Amherst Business
 Improvement District
 Amherst Cinema
 Amherst College / Film
 Series
 Amherst College Music
 Department
 Amherst College Office of
 Communications
 Amherst Copy and Design
 Works
 Amherst Dental Group
 Amherst Family Chiropractic
 Amherst Leisure Services
 Amherst Montessori School
 Amherst Pelham Regional
 High School
 Amherst Railway Society
 Amtrak New England

Anchor House of Artists	Bread Euphoria	Danco Modern
Antioch University New England	Brew Practitioners	Daury Wealth Management
Apex Orchards	Bridges Cuba	The Davis Financial Group LLC
Apex Solar Power	Brookfield Farm	Dean's Beans
Apples and Crafts Fair	Bushnell Center for The Performing Arts	Deerfield Academy
Applied Mortgage Services	Cabot Creamery Cooperative	Delap Real Estate
Arcadia Players	Campus School at Smith College	Dennis Group
Armbrook Village	Caring Solutions	Dietz and Company Architects
Arts and Industry Building	Castle Architectural Salvage	Dockit LLC
Asparagus Valley Pottery Trail	Celebrate Holyoke	Don Muller Gallery
Associated Builders Inc	Celtic Heels School of Irish Dance	Double Edge Theatre
Aston Magna Music Festival	The Center at Eagle Hill	Downtown Mindfulness
ATC Group Services LLC	Center For Business and Industry at Worcester State University	Downtown Sounds
Atkins Farms	Center For Ecological Technology	Dr. Tami Nelson D.C.
Atlas Farm LLC	Changing Habits Diaper Service	DSP Shows
Bard College at Simon's Rock	Chester Theatre Company	Eagle Hill School
Barnes & Noble	CHH Engraving Inc	Ear, Nose, and Throat Surgeons of Western NE
Barron and Jacobs	Cichy's Garage	Earthdance
Barton's Angels Inc	Citystage & Symphony Hall	Eastern States Exposition
Bay Path University	Clark Art Institute	Easthampton City Arts
Bay Path University Strategic Alliances	Close Encounters With Music	Easthampton Healthy Youth Coalition
Baystate Health Systems	Cochrane Dental Associates	Eastworks
Bear Bookshop	Cold Spring Landscape Contractors, Inc.	Edible Pioneer Valley
Beerology	Coldwell Banker Upton-Massamont Realtors	Elegant Affairs
Behavioral Health Network Inc	Collective Copies	Elite Home Health Agency, Inc.
Belly of the Beast	Colony Care at Home Inc	EMA Dental
Bement School	The Common School	Emily Dickinson Museum
Berkshire Bach Society	Commonwealth Honors College	Emma Willard School
Berkshire Botanical Garden	Commonwealth Registry of Nurses	The Experimentory at Deerfield Academy
Berkshire Choral International	Community Foundation of Western Massachusetts	The Farmers Market at Forest Park
Berkshire Eagle	Community Guitar	Farmington Valley Chorale
Berkshire East Mountain Resort	Community Involved in Sustaining Agriculture	First Kane & Bloomberg Fitch Architecture and Community Design
Berkshire Grown	Community Music School of Springfield	Five College Opera
Berkshire Health Systems	Conklin Office Furniture	Flamingo Eventz LLC
Berkshire Museum	Connecticut Virtuosi Chamber Orchestra	Florence Bank
Berkshire Music School	Constitution Records	Florence Hearing Health Care
Berkshire Opera Festival	Cooley Dickinson Hospital	Flowers Flowers
Berkshire Photovoltaic Services	Cornucopia	Foley-Baker, Inc.
Berkshire Taconic Community Foundation	Cottage Street Studios	Forish Construction Company, Inc
Berkshires Arts Festival	Cotton Tree Service	Four Winds School
Big Brothers Big Sisters of Hampshire County	Crafts of Colrain	Franklin Community Co-Op
Big Y Table & Vine	Crooked Stick Pops	Franklin County Chamber of Commerce
Bing Arts Center	Curran & Keegan Financial	Franklin County Community Development Corporation
Black Birch Vineyard	Cushing Academy	Froling Energy
Blandford Fair	Da Camera Singers	Gage-Wiley and Co, Inc.
Blue Heron Restaurant	Daily Hampshire Gazette	Game Over LLC
Book Arts Promotions		Gandara Center
Boston Symphony Orchestra		Gateway City Arts
Bourke Builders		Gilmore and Farrell Insurance Agency, Inc.
Boyden and Perron		
Bradley International Airport/CT Airport Authority		

Glasgow Lands Scottish Festival
 Glenmeadow Retirement Community
 Good News Garage Google
 Great Northeast Productions
 Greater Chicopee Chamber of Commerce
 Green River Festival LLC
 Greenfield Auto Specialists
 Greenfield Center School
 Greenfield Commonwealth Virtual School
 Greenfield Recorder
 Greenfield Savings Bank
 Guzik Motor Sales
 Hadley Garden Center
 Hale Custom Construction
 Hampden Charter School of Science
 Hampshire Bicycle Exchange
 Hampshire Choral Society
 Hampshire College
 Hampshire County Regional Tourism Council
 Hampshire Dermatology
 Hancock Shaker Village
 Hanover Theatre for the Performing Arts
 Harlow Luggage
 Harold Grinspoon Charitable Foundation
 Harriet Beecher Stowe Center
 Harrington Healthcare
 Harry King Rug and Home LLC
 Hart and Patterson Financial
 Hartford Foundation for Public Giving
 Hartford Stage
 Hartford Symphony Orchestra
 Hartsbrook School
 Hearty Eats
 Herrell's Ice Cream Corporation
 Historic Deerfield
 Holyoke Hummus Company
 Hotel Northampton
 Hudson Jazzworks
 Illuminati Vocal Arts Ensemble
 Integrity Development and Construction, Inc.
 Jackson and Connor
 Jacob's Pillow Dance Festival
 Jazz In July
 JE Robison Service
 JGS Lifecare
 Joia Beauty

Jorgensen Center for the Performing Arts
 Katalyst Kombucha / Artisan Beverage Cooperative
 Kathleen Collins Wealth Management
 Keith Minoff Attorney at Law
 Kens' Eyewear, Inc.
 Kestrel Land Trust
 Klondike Sound
 Kloter Farms, Inc.
 Ko Festival of Performance
 Kuhn Riddle Architects
 KW Home
 Landmark College
 Lathrop Communities
 Laudable Productions
 Leisure Time Canvas
 Lexington Group
 Log Cabin Banquet and Meeting House
 Lyra Music, Inc.
 The MacDuffie School
 Mahaiwe Performing Arts Center
 Manchester Music Festival
 The Mark Twain House
 Marlboro Music Festival
 Mass Moca
 Massachusetts College of Liberal Arts
 Massachusetts Cultural Council
 Massachusetts Fair Housing Center
 Massachusetts General Hospital
 MassMatch
 McTeigue & McClelland
 Mead Art Museum
 Mercedes Benz of Springfield
 Meyers Brothers Kalicka PC
 Mike Thornton Agency
 Mike's Maze / Warner Farm
 Miss Hall's School
 Modestow Family Dentistry
 Mohawk Trail Concerts
 Molly Cantor Pottery
 Monson Savings Bank
 Montessori School of Northampton
 Mount Holyoke College Art Museum
 Mount Holyoke College Professional and Graduate Education
 Mount Holyoke College Music Department
 Moving Mentor
 Music Worcester
 Nash Gallery
 National Grid
 Neptune's Harvest

New England Falconry
 New England Forestry Foundation
 New England Meetinghouse Design
 New England Orthopedic Surgeons
 New England Wildflower Society
 Nolumbeka Project
 Norfolk Chamber Music Festival
 North Star Self-Directed Learning For Teens
 Northampton Arts Council
 Northampton Brewery
 Northampton Chamber of Commerce
 Northampton Community Rowing
 Northampton Community Television
 Northampton Financial Services
 Northampton Vision Specialists
 Northampton Wools
 Northeast Solar
 Norwich Solar Technologies
 Nova Motorcycles
 Novi Cantori
 October Mountain Financial Advisors
 Ostberg and Associates
 Panopera
 Paradise City Arts Festival
 Paradise City Landscape Design
 Paradise Copies
 Paragus Strategic IT
 Pascucci, Teixeira and Co. P.C.
 Paulo Freire Charter School
 Pekarski's Sausage
 Pengyew Catering
 Peoplesbank
 Phoenix Fruit Farm
 Phyx Device Repair and Sales
 Pignatere and Sagan
 Pioneer Saab
 Pioneer Spine and Sports Physicians
 Pioneer Valley Ballet
 Pioneer Valley Chinese Immersion Charter School
 Pioneer Valley Montessori School
 Pioneer Valley Osteopathy
 Pioneer Valley Symphony Orchestra
 Pioneer Valley Transit Authority
 Pioneer Volvo

Pipit and Finch
 Pleasant Journey Used Cars
 Preserving Photosynthesis
 Provisions
 Public Health Institute of
 Western Mass
 PV Squared Solar
 Quaboag Valley Community
 Development Corporation
 Quonquot Farm
 Randall's Farm
 Ray Bates
 Realistic Solutions MR
 Red Fire Farm
 The Republican Newspapers
 Rhyme Digital
 River Valley Co-Op
 River Valley Tae Kwon Do
 Riverbend Animal Hospital
 rk Miles
 Robinson Donovan PC
 Rockridge Retirement
 Community
 Roger Salloom
 Roling Structural Integration
 Rose Lander
 RSVP of The Pioneer Valley
 Rural Intelligence
 Ryan Imported Car Repair
 Saint Germain Investment
 Management
 Salemi Appliance
 Salmon Falls Artisans
 Showroom
 Sasson Turnbull Ryan and
 Hoose
 Schaller Acura
 School of Public Policy at
 Umass
 Sevenars Concerts
 Share Coffee Roasters
 Shatz, Schwartz, &
 Fentin P.C.
 Show Circus Studio
 Sidehill Farm
 Simmons Graduate School of
 Library and Information
 Science
 Sixteen Acres Garden Center
 Skating Club of Amherst
 Skye Mountain Realty Inc
 Small Beer Press
 Smith & Son Jewelers
 Smith College Museum of Art
 Smith College Music
 Department
 Snapdragon Engineering
 LLC
 Sonam Stonewalls and
 Tibetan Inn of Deerfield
 Sonia Plumb Dance
 South Congregational
 Church

Spirit Fire Retreat Center
 Spirit Haus
 Springfield College
 Springfield Jazz and Roots
 Festival
 Springfield Museums
 Springfield Parking Authority
 Springfield Public Forum
 Springfield Storytellers
 Springfield Symphony
 Orchestra
 State Street Fruit Store
 Steve Lewis Subaru
 Stoneleigh-Burnham School
 Stoneman Brewery
 Sugarloaf Nurseries
 Sunbug Solar
 Sunnyside Childcare Center
 Sylvester's Restaurant and
 Bakery
 Take Magazine
 Tart Baking Company
 Taylor Street Dental
 Teagno Construction
 Tentrr
 Thelo Home
 The Tibetan Plaza
 Tigerpress
 TJ's Taylor Rental of Hadley
 Town of Deerfield
 Trinity College Chapel
 Truswell Plastic Surgery
 TSM Design
 Turn It Up! Records and CDs
 Turn Park
 UConn Graduate Programs
 - EMBA
 UMass College of
 Humanities & Fine Arts
 UMass Department of Music
 and Dance
 UMass Economics
 Department
 UMass Fine Arts Center
 UMass Psychological
 Services Center
 UMass Summer Programs
 Urology Group of Western
 New England
 The Valley Advocate
 Valley Classical Concerts
 Valley Home Improvement
 Valley Light Opera
 Valley Motor Sports
 Valley Solar
 The Valley Swim School
 Valley Veterinary Hospital &
 Inn For Pets
 Veritas Prep Charter School
 Vermont Coffee Company
 Vermont Jazz Center
 Vermont Sheep & Wool
 Festival

Village Food Mart
 Viva Fresh Pasta
 Voce, Inc.
 Wanderlust Festival
 The Wealth Technology
 Group
 Webber and Grinnell
 Insurance
 WEBS
 West Branch Capital
 West End Pub
 Western Builders
 Western Mass Beer Week
 Western Mass Coaching
 Alliance
 Westfield State University
 Westfield State University
 College of Graduate and
 Continuing Education
 Westminster School
 WGBY Public Television
 Whalen Insurance Agency
 Wilbraham and Monson
 Academy
 The Williston Northampton
 School
 Wilson Services
 Wistariahurst Museum
 Women in Philanthropy
 Women's Fund of Western
 Massachusetts
 Woodstock Chamber of
 Commerce
 Worcester Cultural Coalition
 Worcester Polytechnic
 Institute
 Work Opportunity Center
 Wright Builders
 WSP/Hartford Line
 Yellow Barn
 Yes Computers
 Young at Heart Chorus
 Zoar Outdoor

SPECIAL INITIATIVES

Anonymous
 Anonymous
 The Beveridge Family
 Foundation, Inc.
 Timothy Boomer and
 Judith Nusinoff Boomer
 The Richard P. Garmany
 Fund at The Hartford
 Foundation for
 Public Giving
 Jeffrey Borak
 Dorothy Gavin
 Daniel and Lynne Ann
 Shapiro
 Ruth Solie
 Peggy and David Starr





“This (**NEPR**) is a really valuable resource for us. I think it’s such an important service to us as a community and to my own family — the fact that we can turn it on and hear such wonderful stories anytime of the day or great music.”

Noah and Maxine
Amherst, MA

NEW ENGLAND PUBLIC RADIO

NEPR

News. Classical. Jazz.

Amherst / Springfield / Hartford	WFCR 88.5	FM
North Adams	101.1	FM
Great Barrington	98.7	FM
Lee	98.3	FM
Pittsfield / Lenox	106.1	FM
Williamstown	96.3	FM

All Classical WFCR 88.5-2 HD Radio™

NEPR News Network News. Talk. Culture.

Springfield / Amherst / Westfield	WNNZ 640	AM
Hampden County	WAIC 91.9	FM
Hampshire County	WAMH 89.3	FM
Franklin County	WNNZ 91.7	FM
Southern Berkshire County	WNNU 89.5	FM
Northern Berkshire County	WNNI 98.9	FM
Hampden / Hampshire / Franklin Counties		
	WFCR 88.5-3	HD Radio™

NEPR.net

Listen. Explore. Share.



WHAT DOES IT TAKE TO BRING YOU **NEPR**?

A woman with curly hair, wearing a grey dress and a colorful floral corsage, stands at a microphone on a stage. She is looking to her left. In the background, several other people are standing, including a man in a blue shirt and glasses to her right, and a woman in a white cardigan to her left. The stage is lit with warm, orange light.

44 STORIES TOLD LIVE ON STAGE AT VALLEY VOICES



NEW ENGLAND PUBLIC RADIO.