

## TECH UPDATE:

WPR has a temporary reception problem in the Lander area. This is due to moving the transmitter from Sandhills to Limestone Mountain.

This move increased overall coverage from 24,566 people to 48,263 people, and improved the signal down Highway 287 almost all the way to Muddy Gap and west of the area over South Pass and Atlantic City.

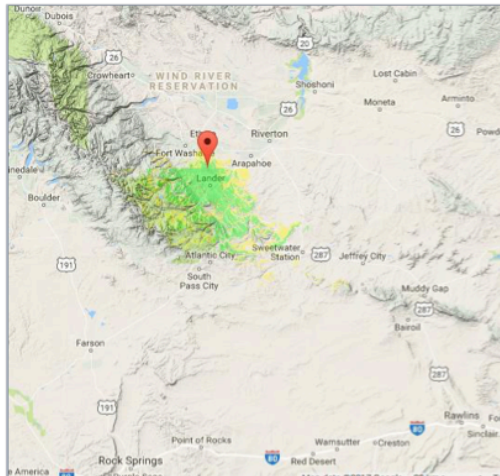


Figure 1 - Sandhills Site



Figure 2 - Limestone Mountain Site

The move includes listeners than we reached previously. We have received comments from many people in the Fremont County area that now receive the signal that could not in the past. The reason south Lander experiencing a loss of signal is due to shading from some of the hills between Limestone Mountain and Lander. Parts of Lander now sit in a shadow. Figure 3 shows the Lander signal before the change and Figure 4 shows the signal after the change. Green is solid signal. Yellow is a reduced signal.

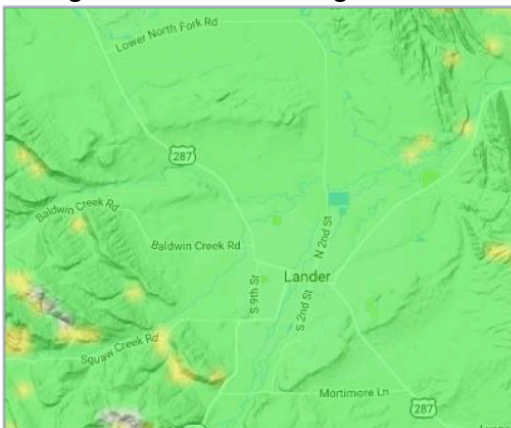


Figure 3 - Sandhills Site



Figure 4 - Limestone Mountain Site

We will install Booster signal at the Sandhill's Site to return full reception to Lander. This requires synchronizing the two signals in the area so as not to cause cancelation problems for listeners. While it will not take a great deal of time to accomplish this, we ask for your patience while we work toward installing this solution.

Paul Montoya  
Director of Engineering  
Wyoming Public Media



**WYOMING PUBLIC RADIO  
CLASSICAL WYOMING  
WYOMING SOUNDS  
JAZZ WYOMING**

**[wyomingpublicmedia.org](http://wyomingpublicmedia.org)**